



BORDER WINDS ENERGY PROJECT

WEEKLY PROJECT REPORT

Weekly report no:	43
Report for week period ending COB Friday:	05/22/2015
Calendar week no:	21

Executive Summary

This Week's Highlights

- The lo-drill mobilized to site and began drilling pier excavations at the substation. Concrete has been placed in eight (8) piers.
- The mud mat was removed at T34, according to RRC recommendations; subgrade processing is ongoing; the proof roll for the bottom of the excavation is scheduled for 5/24/2015.
- The cable crew continued trenching and installing MV collection system cable and began excavating preparing to set junction boxes.
- Completed all SCADA room work, including power outlets, cable tray, lighting, and VCT at the O&M building. AB Systems successfully placed the concrete slab for the storm shelter roof. Civil crews began grading the yard and completion is scheduled for 5/29/2015.

This Week's Key Issues

- Approximately 1" of snow/rain was received between 5/16/2015 and 5/18/2015 resulting in a site closure on 5/25/2015 and muddy conditions and standing water. The storm event delayed progress of crane pad building, preparing the foundation excavations for mud mat concrete placement, road construction and maintenance.
- The foundation excavation at T4 continued to require work as water was present; a drainage 'moat' was installed, diverting water around the area to a sump pump; additionally RES Engineer of Record (EOR) approved the use of 1" clean rock to be placed on the previously installed 6" minus. RES and RRC expect the foundation bottom to pass the proof roll which is scheduled for 5/23/2015.
- Civil crews continued to pump water off crane pad subgrade; proof rolls have been scheduled for 5/24/2015 and base application has been scheduled for 5/25/2015.
- County road 108 received additional attention and although conditions have improved, more repairs are required and are being researched by RES site team and EOR.
- The site yard repair and dress-up is scheduled for 5/24/2015 in preparation of turbine crews and turbine supplier mobilizing to site.



Safety

*Full description of week's Safety Log can be found in Exhibit 2

Type	Lost Time	Recordable Injury (Medical Aid)	Minor Injury (First Aid)	Equipment Property Damage	Near Miss	Safety Walks
Current Period	0	0	0	0	2	16
Project To Date	1	1	10	21	71	527

Previous Week's TRIR = 2.28 / Current Week's TRIR = 2.22

((Lost Time + Medical Aid) * 200,000) / Total Man Hours

Previous Week's RES Safety Index = 0.90 / Current Week's RES Safety Index = 0.88

((Lost Time * 64) + (Injury * 16) + (Minor Injury * 4) + (Damage * 1) + (Near Miss * 0.25)) / Man Hours * 1000

Weeks Highlights:

- Site Safety held a meeting with the RES leadership team with the purpose of encouraging and understanding the safety walk process.
- A new site safety, "Everyone Goes Home Safe Everyday" banner has been received for the site and will be posted for all hands to sign.
- A safety incentive program has been implemented. Personnel who exhibit behaviors warranting recognition will be given a small token of appreciation. The purpose of the program is to encourage buy-in to the safety program and increase the safety culture onsite.
- Traffic Signs, "Men at Work" Signs and barricades have been received on site and are being deployed to the field for use.
- Xcel notified the site team that the Peace Garden switchyard has been energized. All personnel were advised that this area is off limits
- T-post cap shipment was received and crews were asked to install them on all t-posts onsite lacking the protective cap
- A dog that had been abandoned on site and had been living in the laydown yard and running around vehicles and equipment was adopted by one of the site team members.

Weeks Issues:

- A winter storm passed through the area on Sunday 5/17/15 snow, sleet, hail and rain covered the site. The conditions made the roads unsafe to drive on and as a result the site was closed on Monday 5/18/15.
- The radio repeater for the project had problems, which resulted in site reduced distance that radios could reach.
- Remaining focused prior to and after the holiday weekend was discussed with site personnel. Site will remain open and select crews will be working through the holiday.



Project Work Hours:

- Weekly Man-hours: 5,094.50
- Total Project Man-hours: 179,836.20
- Hours Since Last Recordable Injury: 10,230.50

Environmental

*Full description of week's Environmental Report can be found in Exhibit 2

Type	Major Incident	Minor Incident	Near Miss	Observation
Current Period	0	0	0	3
Project to Date	0	57	3	41

Rolling Incident Score: Previous week: 1.10 / Current Week: 1.07

$((\text{Major Incident} * 16) + (\text{Minor Incident} * 4) + (\text{Near Miss} * 0.25) + (\text{Observation} * 0)) * 1000 / \text{Total Man Hours}$

Week's Highlights:

- Continuing to recycle on-site cardboard at the recycling facility in Rolla.
- Crews were asked to re-use the 5 gallon spill kit buckets used to temporarily store contaminated soil

Week's Issues:

- Received 0.60" of snow on Sunday 5/17/2015. Observed muddy condition the following day due to snow thaw.
- During the post-storm BMP inspection, environmental supervisor observed water flow through a damaged section of the silt fence on the west side of the O&M building. Installing additional silt fence and straw wattles to prevent silt erosion. Silt will need to be removed from the area once the crop has been harvested.
- Tracks through a farmer's field were created by going around a soft spot in County Road 51. All unimproved 'two-track' roads have been deemed off limits to wind farm traffic. Signs alerting traffic have been installed on this road.
- A supposed county installed culvert is plugged on County Road 30. A civil crew will unplug the culvert on 5/23/2015.
- Culverts have been identified as needing protection. Straw wattles and rip-rap will need to be installed. This work will be scheduled with civil crew next week.



Quality

*Full description of week's Quality Report can be found in Exhibit 4

Type	RES Issued NCRs			RES Issued CPARs			Client Issued NCRs			Client Issued CPARs		
	Issued	Open	Closed	Issued	Open	Closed	Issued	Open	Closed	Issued	Open	Closed
Current Period	0	0	0	0	0	0	1	1	0	0	0	0
PTD	3	0	3	0	0	0	7	2	6	0	0	0

Week's Highlights:

- Collecting information to respond to NCR-2015-016.
- Monitored concrete placement at the substation for piers and MPT containment slab.
- Building & Earth checking densities for collector trench backfills, roads and culverts, testing Class 5 material gradations & processing proctors.
- Monitored construction at the O & M Building.
- Collecting information and assembling Job Books.
- RRC is testing soils at the substation and Turbine site excavations and backfill.
- Inspecting collector trenching & backfills.
- Inspecting site compactions.
- Ground testing was completed for turbine T-3 for NCR-2014-038 with passing results.

Week's Issues:

- Submitted TEF 034 for county road repair procedures.
- Submitted TEF 033 for the use of pit-run rock for road fill.



SCHEDULE STATUS

Project duration	68
No. of weeks into contract	45
Contract time passed (%)	66%

Key Activities (Construction)	Weighted %	Percent Complete		
		Contract Schedule	Construction Schedule	Actual
Design Engineering	2.5%	100%	100%	100%
Roads	14%	100%	87%	85%
Crane Pads	6%	6%	6%	4%
Foundations	20%	100%	96%	95%
Collection System	20%	50%	45%	44%
Substation	10%	57%	41%	30%
WTG Delivery, Erection, MCC	20%	0%	0%	0%
O&M Building	5%	100%	68%	57%
Completion	2.5%	0%	0%	0%
Overall Actual Percent Complete				46%

PROGRESS REPORT

PERMIT STATUS

Permit Type / Description	County / State	Responsible Group	Date Needed By	Status
O&M Well Permit	ND State	AB Systems	-	No permit required Awaiting documentation
Hwy Intersection for deliveries	ND State	RES Americas	5/18/2015	Application submitted. Under review.

CONSTRUCTION STATUS

Certificates	Total	Submitted	Signed
Foundation Completion Certificate	75	71	71
Mechanical Completion Certificate	75	0	0
Electrical Works Completion Certificate	1	0	0
Project Mechanical Completion Certificate	1	0	0
Project Substantial Completion Certificate	1	0	0
Project Final Completion	1	0	0



ROADS & CRANE PADS

Item	Weighted %	Budget	Total Completed	Total Remaining	Percent Complete
Roads	70%	Roads			69%
Clear and Grub	20%	152,837	152,837	0	100%
Subgrade	25%	152,837	141,346	11,491	92%
Place and Compact Road Base	30%	207,469	185,555	21,914	89%
Shoulders	15%	152,837	0	152,837	0%
Ditches	10%	152,837	0	152,837	0%
Crane Pads	30%	Crane Pads			3%
Shape and Compact Sub Grade	40%	75	11	64	14%
Place and Compact Road Base	60%	75	0	75	0%

Comments:

- Worked crane pad subgrade at T44, T45, T46, and T47.
- Continued to maintain 52nd Ave, 108th St and 109th St. Road conditions are continually improving.
- Work continued to be affected due to rain and muddy conditions.

FOUNDATIONS

Item	Weighted %	Budget	Total Completed	Total Remaining	Percent Complete
Excavations	10%	75	72	3	96%
Mud Mats	5%	75	72	3	96%
Bases	45%	75	71	4	95%
Pedestals	20%	75	71	4	95%
Backfilled	15%	75	71	4	95%
Vestas Ground Kit	5%	75	71	4	95%

Foundation Progress 95%

Comments:

- Removed T34 mud mat. Working subgrade to prep for re-placement of mud mat.
- Continued to dewater and rebuild the subgrade for T4.
- Nelson completed the bottom mat, anchor bolt cage and started rebar for the top mat on T10.



COLLECTION SYSTEM

Item	Weighted %	Quantity	Total Received	Total Remaining	Percent Complete
Deliveries	30.0%		Deliveries		97%
Grounding Transformers	10.0%	6	6	0	100%
MV Cable 3/0 AWG AL	15.00%	308,288	314,910	0	100%
MV Cable 350 Kcmil AL	7.50%	140,708	143,964	0	100%
MV Cable 750 Kcmil AL	15.00%	217,740	208,085	0	96%
MV Cable 1000 Kcmil AL	7.50%	88,167	90,485	0	100%
MV Cable 1250 Kcmil AL	20.00%	147,069	150,472	0	100%
Fiber 12 count	2.50%	328,520	336,590	0	100%
Fiber 120 count	2.50%	6,587	6,587	0	100%
Ground Cable	10.00%	299,663	299,663	0	100%
Junction Boxes	5.00%	28	28	0	100%
Rubber Goods	5.00%	1420	1420	0	100%
Installations	50.0%		Installations		34%
Trench	60%	278,230	97,308	180,922	34%
MV & Fiber/Ground Cable	30%	297,841	107,350	190,491	36%
Grounding Transformers	5%	6	0	6	0%
Junction Boxes	5%	28	0	28	0%
Terminations	20.0%		Terminations		0%
Grounding Transformers	10.00%	6	0	6	0.00%
Junction Boxes	30.00%	28	0	28	0.00%
Turbines	60.00%	75	0	75	0.00%

Collection System Progress: 44%

Comments:

- Preformed Sheath testing on circuits 1 and 6.
- Began VLF Testing collection system cables for verification.
- EPS onsite to continue ground grid testing on Circuit 1.
- Trenched and installed cable from just east of Substation to JB 1A/2, T41-T43, and T68-T67.
- All grounding transformers received on site.
- Westwood demobilized.
- Continued to work with Jeff Richardson to set up contract for Hydro Vac work.



O&M BUILDING

Activity Description	Required	Unit	Remains	% Comp.
Earthworks	100	%	5	96%
Foundation	100	%	3	97%
Deliver Building	100	%	0	100%
Building Enclosed	100	%	0	100%
Building Interior Framing	100	%	2	100%
Building Electrical	100	%	30	75%
Building HVAC	100	%	75	65%
Plumbing	100	%	30	85%
Building Interior Trim & Finishing	100	%	80	50%
Septic System	100	%	90	10%
Water Well	100	%	100	0%
Fence and Yard Rock	100	%	100	0%

O&M Building Progress: 60%

Comments:

- Completed all SCADA room work, including power outlets, cable tray, lighting, and VCT.
- Continue work on the framing, taping, painting, VCT, ceramic tile, ceiling installation.
- Placed the concrete slab on the storm shelter roof.
- Continue HVAC, plumbing, and electrical installations.
- Yard grading has started and is expected to be completed by the end of the week.
- Utility company is scheduled to install power to the building starting Tuesday, 5/26/15. RES has staked the route in agreement with XCEL.
- VTI installation has been rescheduled to 6/15/15 as per Xcel's request. All conduits for the security system are in place.
- Ground grid testing was completed and EPS has informed RES that the results are acceptable. RES is awaiting documentation.
- Received Rev.8 of the building drawings, which were reviewed and sent back to ABS with comments to capture as-built comments.



SUBSTATION

Item	Weighted	Required	Total Completed	Total Remaining	Percent Complete
Design	20%	Design			20%
Design Drawings	20%	100	100	0	100
Deliveries	35%	Deliveries			2.5%
Structural Steel	15.0%	100	65	35	35%
Main Transformer	30.0%	100	0	100	0%
Control House	15.0%	100	0	100	0%
Relay Panel	15.0%	100	0	100	0%
Arrestors	5.0%	100	0	100	0%
Switches	10.0%	100	0	100	0%
Breakers	10.0%	100	100	0	100%
Construction	45%	Construction			18%
Grading & Drainage	15.0%	100	75	25	75.0%
Foundations	15.0%	100	36	64	36%
Underground/Grounding	10.0%	100	10	90	10%
Structural Steel Work	10.0%	100	0	100	0%
Equipment Installation	10.0%	100	0	100	0%
Control Building/Wiring	10.0%	100	0	100	0%
Transformer Fit Out	10.0%	100	0	100	0%
Commission	10.0%	100	0	100	0%
Fence, Gravel, & Clean Up	10.0%	100	0	100	0%

Substation Progress: 30%

Comments:

- Evergreen Construction mobilized drilling rig to site.
- Assembled drilling rig and ran through preliminary testing and functional operation.
- Began drilling pier foundations in substation.
- 13 Pier foundations have been drilled.
- Concrete placed for 8 pier foundations.
- 4 additional pier foundations have been started and are in progress.
- Rosendin began installing ground grid in northwest corner of sub.



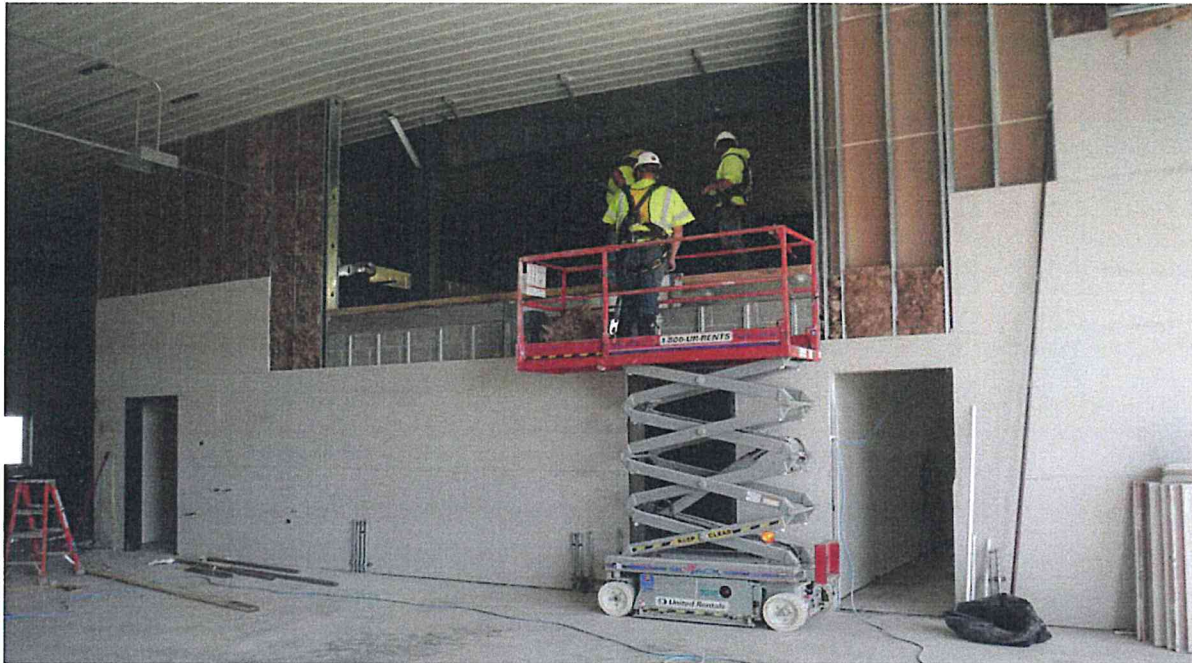
Exhibit 1 – Site Photographs



Substation – MPT Foundation



Substation – MPT foundation



O&M – Drywall in Shop Area



Collection System – Trenching



Exhibit 2 – Safety log

#	Date:	Incident Observed During:	Incident Type:	Company Involved:	Incident Details:	Corrective Action Details:	Actions Taken to Prevent Reoccurrence:
568	5/16/2015	Safety Walk	Safe Work Observation	RES Americas	A new beacon light was installed on the vehicle being driven.	None, this was a Safe Observation.	None, this was a Safe Observation.
569	5/16/2015	Safety Walk	Safe Work Observation	RES Americas	Leaving the project late and in adverse weather conditions I made a coworker aware of my departure and arrival for accountability.	None, this was a Safe Observation.	None, this was a Safe Observation.
570	5/16/2015	Safety Walk	Safe Work Observation	RES Americas	A road that has been experienced heavy rain was impassable. To avoid getting stuck the vehicle turned around and did not attempt to navigate the road.	None, this was a Safe Observation.	None, this was a Safe Observation.
571	5/16/2015	Safety Walk	Near Miss	A.B. Systems	While driving on 106 a vehicle came over a hill in the wrong lane and nearly struck an A.B. Systems truck head on.	During the all hands safety meeting all crews were reminded of the importance of driving undistracted and using caution when approaching blind areas in the road.	Any team members found driving unsafely or in a manner that is not in compliance with RASWP 011 will be issued strikes.
572	5/18/2015	Safety Walk	Hazard Observation	RES Americas	A winter storm moved into the Border Winds area on the evening of 17May2015 leaving 6 inches of sleet, hail and snow on the ground. Site Safety made two overnight and early morning visits to the site and after seeing the conditions on site made the decision to close Border Winds for Monday 20May2015 for safety concerns.	Border Winds was closed on 18May2015 due to weather.	Several site visits were made during the day to assess the site conditions and the site reopened on 19May2015.
573	5/19/2015	Safety Walk	Hazard Observation	RES Earth and Cable	A road maintainer operator was operating on 52nd Ave with the equipment door open.	Operator was stopped in the equipment and then informed that the equipment doors need to be closed at all times while the equipment is being used.	During the all hands safety meeting the Electrical Manager talked with all team members about the correct way to operate equipment on site.
574	5/19/2015	Safety Walk	Safe Work Observation	RES Earth and Cable	Loader operator came to a complete stop and grounded his	0	None, this was a Safe Observation.



					buckets blade when vehicles approached to pass.		
575	5/19/2015	Safety Walk	Safe Work Observation	RES Earth and Cable	Loader operator stopped and got out of the equipment to talk with ground crew about what was going to take place before starting work.	0	None, this was a Safe Observation.
576	5/20/2015	Safety Walk	Hazard Observation	A.B. Systems	PPE violations 2 workers did have side shields on their prescription glasses one worker did not have safety glasses on, one worker was working on a short scaffold with wheels he was moving the scaffold by shifting his body from side to side scaffold needs to have wheels locked before in a stationary position before use.	Brought both foremen over with workers and explained the site policies on PPE requirements, also instructed the worker and foreman on locking down the wheels on mobile scaffolding with wheels.	Tomorrow I will attend the ONM Building crew's tool box talk and go over site policies to assure everyone understands that any contractor must adhere to all site safety policies.
577	5/20/2015	Safety Inspection	Hazard Observation	A.B. Systems	During my site audit/Inspection Section 3.2 work area housekeeping needed, material not properly stored, loose material loose on the floor trip and fall hazards, fire extinguisher not inspected and blocked bay boxes could not access.	Talked to ONM foreman to correct finding, ONM foreman assigned two workers to start clean up to correct findings on housekeeping and boxes moved from in front of fire extinguisher.	I will inspect ONM building tomorrow for a follow up to assure all compliance issues have been address.
578	5/20/2015	Safety Walk	Hazard Observation	Nelson Wind	Observed work using a high pressure power washer without using a full face shield, fire extinguisher was not inspected mounted on the work trailer.	Stopped worker and instructed him to put on a full face shield and explained way he needs to wear one while performing this task, talked to foreman to replace out of date fire extinguisher.	I instructed the worker on why he should be using a full face shield. I talked to the foreman and he did replace the fire extinguisher correcting the issue.
579	5/19/2015	Safety Walk	Safe Work Observation	RES Earth and Cable	Several days of rain created muddy conditions and left parts of the site inaccessible to vehicle traffic. With tight conditions employees had to park in the laydown yard and due to space they used backers when parking POV in the	None, this was a Safe Observation.	None, this was a Safe Observation.



					yard.		
580	5/21/2015	Safety Walk	Safe Work Observation	A.B. Systems	All employees at the O&M had on all of their PPE.	None, this was a Safe Observation.	None, this was a Safe Observation.
581	5/21/2015	Safety Walk	Safe Work Observation	A.B. Systems	A power cord running to the building was left in the yard and covered by mud and standing water.	The power cord was removed from the area and put into storage.	O&M foreman was made aware of the problem and told to ensure that power cords are picked up.
582	5/21/2015	Safety Walk	Safe Work Observation	A.B. Systems	All employees at the O&M had on all of their PPE.	None, this was a Safe Observation.	None, this was a Safe Observation.
583	5/21/2015	Safety Walk	Hazard Observation	A.B. Systems	A piece of rebar was sticking up and the rebar cap had fallen off.	Re-bar cap was replaced.	O&M team members were reminded to inspect work site.
584	5/21/2015	Safety Walk	Safe Work Observation	A.B. Systems	A safety meeting was held with RES Safety and all of the O&M contractors	None, this was a Safe Observation.	None, this was a Safe Observation.
585	5/21/2015	Safety Walk	Safe Work Observation	A.B. Systems	JHA was complete.	None, this was a Safe Observation.	None, this was a Safe Observation.
586	5/22/2015	Safety Walk	Hazard Observation	Rosendin	Multiple pieces of rebar and metal stakes were scattered over the substation foot print.	Rosendin foreman was directed to ensure that the substation was cleaned up and materials either properly stored or disposed of before crews left for the day after work was completed.	Rosendin Electric and Electrical Manager made aware that they need to keep the substation materials stored properly and the area clean.
587	5/22/2015	Safety Walk	Hazard Observation	Evergreen Cassion	A drilling rig did not have its swing radius blocked off to prevent access.	Evergreen foreman was informed that equipment being used needed a barricade. Foreman made evergreen place a barricade right then.	Evergreen team members had been informed that they need to keep the work area/ swing radius area barricaded.
588	5/21/2015	Peer to Peer Safety Interaction	Near Miss	RES Earth and Cable	When returning to the laydown yard at the end of the day several crew members were in a crew truck and while driving the passenger turned on the air conditioning and when the blower turned on dust and debris blew out of the vent and went into the driver's eye. The driver maintained control and stopped the vehicle safely. Another crew member then used bottled water to help rinse the driver's eye out.	A pressure washer is on site and a wash station will be used to clean vehicles and crews will be directed to wipe down the interiors of trucks.	All team members will be made aware of the event and the near miss and encourage to wear their eye protection when in the vehicles as particles can blow into their eyes from the blowers being turned on or when the windows are down.



Exhibit 3 – Environmental Log

#	CLASS	SUB-CAT	CONTRACTOR	DATE	INCIDENT DETAILS	ACTION TAKEN TO CORRECT SITUATION	ACTION TAKEN TO PREVENT REOCCURANCE
23053-15-53	Observation	Weather Event	All	5/17/2015	Received 0.6" of snow on the site. Muddy conditions and snow melt observed the following day.	Perform BMP inspection and ensure all culverts inlets are clear of silt.	Ensure all BMPs are installed properly
23053-15-54	Observation	Informational	RES	5/20/2015	Disposed cardboard onsite for recycle to the city of Rolla recycling center	None	None
23053-15-55	Observation	Lack of or Damaged BMP	RES E&C	5/21/2015	Silt fence on the West side of the O&M building was damaged due to high winds. Rain and snow melt received over the weekend drained through this area. No water body effect.	Install additional silt fence to fix the damaged section and straw wattles to dissipate the water flow and collect silt.	Replacing silt fence with straw wattles in area susceptible to damage due to high wind.

Exhibit 4 – Quality Log

- Incidents - None
- CPARs - None
- NCRs - 8

NCR log

Description of Material	NCR Opened (Current Period)	NCR Closed (Current Period)	Total NCR Open (As of this Week)	Total NCR Closed (As of this Week)
Totals			2	6
NCR-2015-016 Backfills and compactions of the turbine bases in freezing conditions	X			
NCR-2014-38, T3 grounding was not installed per specifications			X	



**FIELD QUALITY CONTROL PROGRAM
DEFICIENCY REPORT REGISTER
5/15/15**

No	Description i.e. Roads, Foundations, Electrical	LOCATION	Turbine #	Test Document No:	DEFICIENCY DESCRIPTION	DATE ENTERED	ESTIMATE D COMPLETI ON DATE	DATE CLEARED
1	Roads, Culverts	Road K2 Sta. 21+00	T-28/T-29	USCF-001	Incorrect Culvert Installation	9/29/14		11/24/14
2	Roads, Culverts	Road W# Sta. 00+12	T-59	USCF-001	Incorrect Culvert Installation	9/29/14		
3	Foundations	T-49 Base	T-49	USCF-001	Foundation not protected for cold weather per ACI 306	10/08/14		11/05/14
4	Roads, Culverts	105 th Ave Sta. 15+25		USCF-001	Geogrid not replace after installation	10/14/14		
5	Roads, Culverts	Access Road T2	T-74	USCF-001	Road alignment incorrect, Culverts missing	9/30/14		
6	Roads, Culverts	N1 00+00	T-45	USCF-001	Culvert was not inspected prior or during backfill, improper material used for back fill	11/05/14		
7	Roads, Culverts	Access Road R1	T-63	USCF-001	Soft spots in road and Geogrid is damaged	10/25/14	5/27/15	



8	Roads, Culverts	Access Roads to T-9, T-10, T-11, T-34, T-35 & T-71		USCF-001	Class 5 material is out of specification, the roads need to be monitored for performance	11/13/14	6/20/15	
9	Roads, Culverts	Access road to T-13 Sta. 8+00	T-13	USCF-001	Geogrid was damaged and the repair was not witnessed by Quality	11/13/14	6/20/15	
10	Roads, Culverts	Culvert at T-26	T-26	USCF-001	Needs to be extended on west end	11/23/14	5/22/15	
11	Roads, Culverts	Access Road C2	T-10	USCF-001	The access road needs to be re-aligned per the land owner's request.	12/03/14	5/22/15	
12	Foundations	O&M Building		USCF-002	Stoop footer at S/E end of building has wrong backfill material	12/05/14	5/29/15	
13	Roads, Culverts	All		USCF-001	Need compaction test results for all roads.	4/08/15		
14	Roads, Culverts	All		USCF-001	Culvert detail needs to be followed- No culverts with correctly placed rip-rap and established grass.	4/08/15		
15	Roads, Culverts	C2.1	T-9	USCF-001	Culvert/LWC not installed around Station 4+00.	4/08/15	6/13/15	
16	Roads, Culverts	E1	T-33/T-34	USCF-001	Culvert/LWC not installed around Station 15+00. Large boulders also installed under road base in the same area.	4/08/15	6/13/15	
17	Roads, Culverts	F2.1	T-13	USCF-001	Geogrid ripped and damaged. Needs to be replaced around Station 6+00.	4/08/15	5/27/15	



18	Roads, Culverts	H1.1	T-20	USCF-001	Culvert/LWC not installed around Station 2+00.	4/08/15	6/13/15	
19	Roads, Culverts	K1	T-26	USCF-001	Does not follow RFI No:23053-024.	4/08/15	During Reclaim	
20	Roads, Culverts	L1	T-50	USCF-001	Culvert install too high.	4/08/15	5/22/15	
	Roads, Culverts	Q2	T-36/T-37	USCF-001	Culvert/LWC not installed around Station 25+00. Geogrid ripped and damaged around Station 27+00 to Station 29+00. Needs to be replaced.	4/08/15	5/27/15	
21	Roads, Culverts	P1	T-3	USCF-001	Culvert installed too high.	4/08/15	5/22/15	
22	Roads, Culverts	W1	T-40	USCF-001	Culvert/LWC not installed around Station 6+00.	4/08/15	5/27/15	
23	Roads, Culverts	W2	T-58	USCF-001	Culvert/LWC not installed around Station 17+00.	4/08/15	5/27/15	
24	Roads, Culverts	W3	T-59	USCF-001	Large boulders installed under road base and around culvert, Culvert at the entrance installed too high at both inlet and outlet.	4/08/15	5/27/15	
25	Roads, Culverts	O2	T-43	USCF-001	Culvert not installed at the entrance. Not on Plans. Conditions require	4/08/15		
26	Roads, Culverts	N1	T-45	USCF-001	Large boulders installed under road base and around the culvert.	4/08/15		



27	Roads, Culverts	N3	T-47	USCF-001	Large boulders installed under road base.	4/08/15		
28	Roads, Culverts	R1	T-63	USCF-001	Geogrid ripped and damaged. Needs to be replaced around Station 2+00.	4/08/15	5/27/15	
29	Roads, Culverts	R2	T-66	USCF-001	Culvert/LWC not installed around Stations 15+00 and 21+00.	4/08/15	5/27/15	
30	Roads, Culverts	R2.1	T-64	USCF-001	Culvert/LWC needs to be installed before the tower location.	4/08/15	5/27/15	
31	Roads, Culverts	S1	T-60/T-61/T-62	USCF-001	Large boulders installed under road base and around culverts on both sides on 52nd Ave, Culvert/LWC needs to be installed around Station 30+00.	4/08/15		
32	Roads, Culverts	T1	T-73	USCF-001	Culvert not installed at the entrance, Culvert/LWC not installed around Stations 19+00 and 33+00.	4/08/15	6/03/15	
33	Roads, Culverts	T2	T-74	USCF-001	Culvert not installed at the entrance, Temporary culverts installed for foundation construction around Station 3+00 - Permanent culvert(s) needs to be installed.	4/08/15	6/04/15	
34	Roads, Culverts	T3	T-75	USCF-001	Culvert not installed at the entrance.	4/08/15	6/04/15	
35	Roads, Culverts	105 th St		USCF-001	Geogrid damaged between Stations	4/08/15	6/04/15	



					55+00 and 80+00			
36	Roads, Culverts	107 th St		USCF-001	Culvert needed at the corner of 107th St. and Access Road O1, Corner of 107th St. and 52 Ave. large boulders used under road base material.	4/08/15	5/27/15	
37	Roads, Culverts	108 th St		USCF-001	Many areas from T23 to T3 where the Geogrid has been damaged and there is not enough coverage class 5 material over the Geogrid	4/08/15	5/27/15	



Exhibit 5 – RFI Log

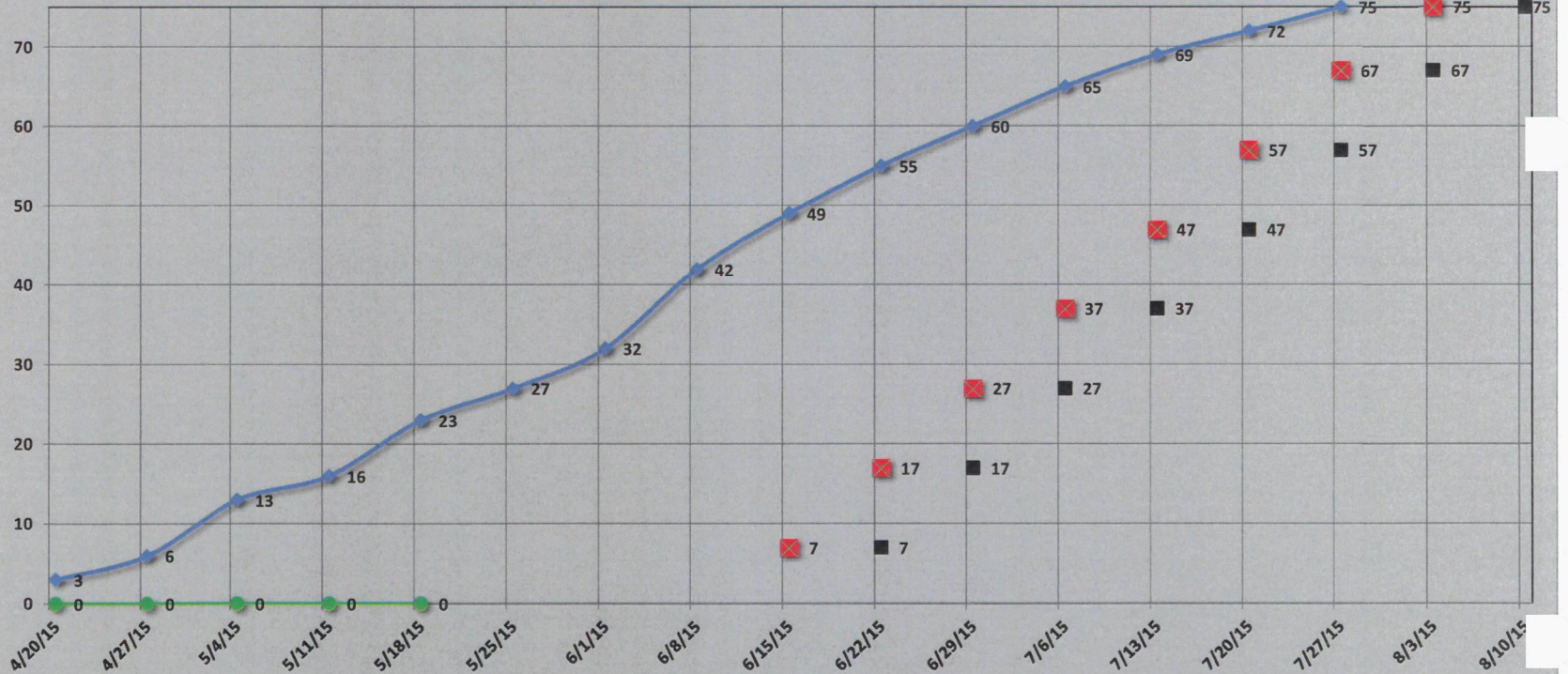
*Open RFIs and RFIs closed last week

	Generated By	Company	Sent To	Company	Subject	Date Sent	Response Requested By	Type: Civil, Electrical, etc.	Status / Comments	Date Closed
23053-30	Shabeeb Abdul Khader	RES	Bradley Morrison	Xcel Energy - Generation	Install crushed aggregate on the substation site	10/31/2014	11/6/2014	Civil	Xcel Responded. RES to perform density test after substation pier drilling.	
23053-51	Lester Archer	RES	Brad Morrison	Xcel Energy - Generation	DC Station Battery	2/13/2015	2/20/2015	Electrical	Received response on 2/20/15. Requested Battery Sizing calculation for battery charger approval	
23053-81	Shabeeb Abdul Khader	RES	Brad Morrison	Xcel Energy - Generation	Cap Switchers	5/1/2015	5/4/2015	Substation	Xcel requested RES review.	
23053-82	Emad Alaydi	RES	Brad Morrison	Xcel Energy - Generation	Substation testing and commissioning requirements	5/4/2015	5/8/2015	Substation		
23053-83	Emad Alaydi	RES	Brad Morrison	Xcel Energy - Generation	Public and Local IP address	5/4/2015	5/8/2015	Substation		
23053-84	Emad Alaydi	RES	Brad Morrison	Xcel Energy - Generation	T1 & POTS line	5/7/2015	5/13/2015	Substation	Awaiting additional information from Xcel	
23053-85	Aaron Thooft	RES	Brad Morrison	Xcel Energy - Generation	Collection line movement	5/14/2015	5/20/2015	Substation		
23053-86	Lester Archer	RES	Brad Morrison	Xcel Energy - Generation	Peace Garden Observation	5/15/2015	5/21/2015	Substation		
23053-087	Lester Archer	RES	Brad Morrison	Xcel Energy - Generation	Border Winds-Reactor/Cap Bank Controls	5/22/2015	6/1/2015	Substation		

Last Updated: 5/18/2015

Border Winds - Crane Pad Completion Progress Chart

Number of Crane Pads Complete



	4/20/15	4/27/15	5/4/15	5/11/15	5/18/15	5/25/15	6/1/15	6/8/15	6/15/15	6/22/15	6/29/15	7/6/15	7/13/15	7/20/15	7/27/15	8/3/15	8/10/15
Planned Crane Pads Complete	3	6	13	16	23	27	32	42	49	55	60	65	69	72	75		
Actual Crane Pads Complete	0	0	0	0	0												
Anticipated WTG Deliveries									7	17	27	37	47	57	67	75	
Guaranteed WTG Deliveries										7	17	27	37	47	57	67	75