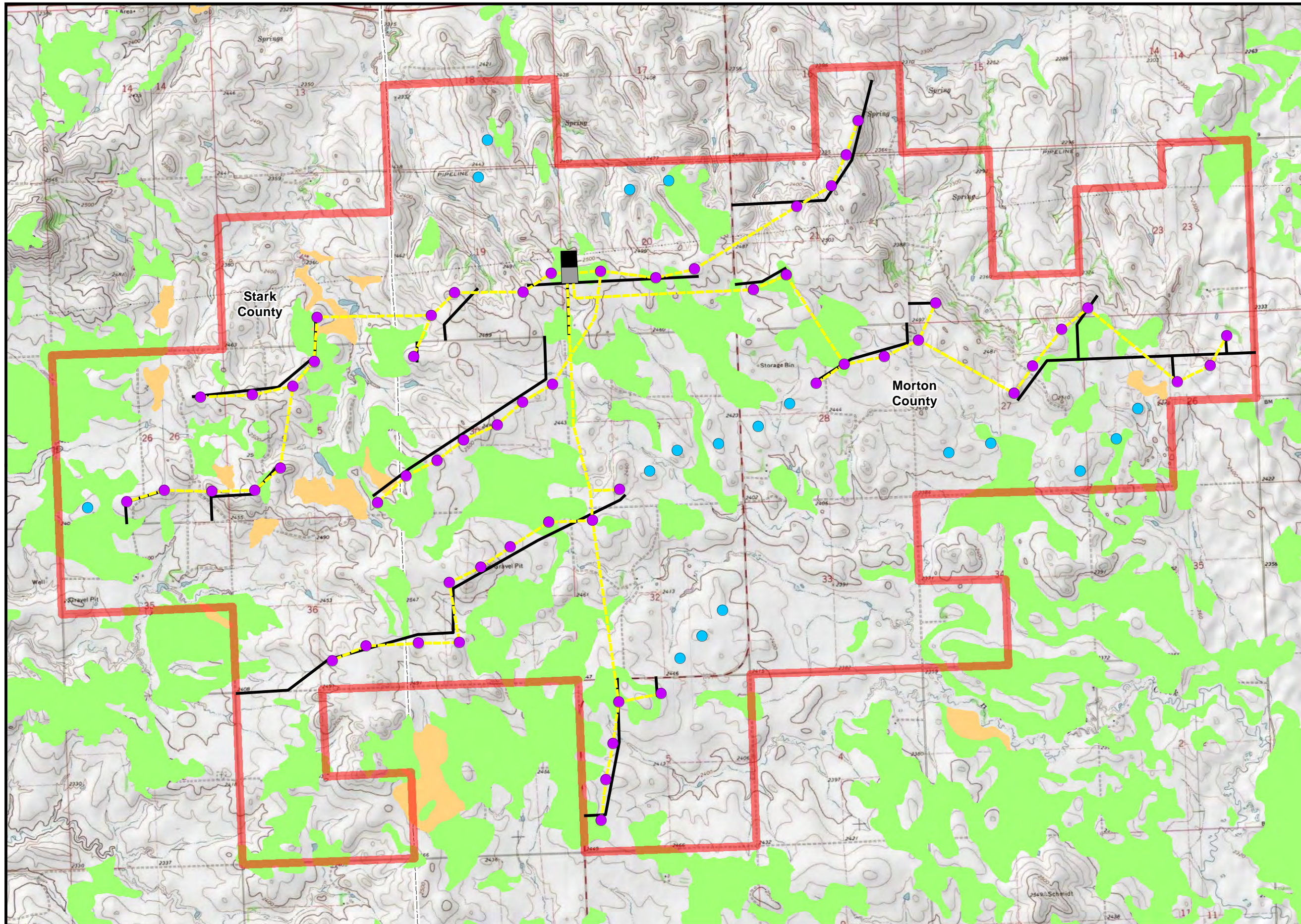


Sunflower Wind Project  
Application for North Dakota  
Certificate of  
Site Compatibility

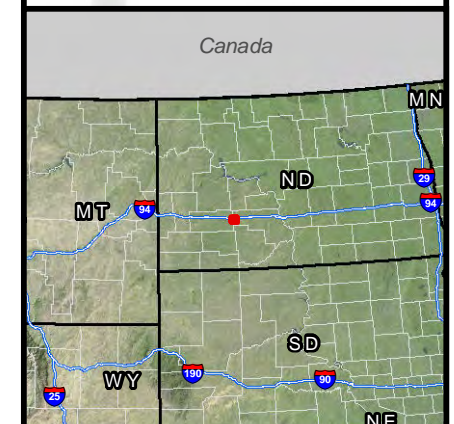
Figure 7B  
Farmland Soils  
GE 1.85-87

Morton and Stark Counties, ND  
February 2014



- Project Area
- Turbine Location\*
- Alternate Turbine Location\*
- Approximate Underground Collection System Routing
- Approximate Access Road Routing
- Proposed Interconnection
- Proposed Substation
- Prime Farmland
- Farmland of Statewide Importance
- County Boundary

\*The Project would utilize up to 59 GE 1.85-87 turbines; however, 76 potential GE turbine locations are included on this figure to account for alternate locations that may be used.



P:\GIS\_PROJECTS\Infinity\_Wind\_Power\Sunflower\_ND\PSC\_CSC\MXDs\CSC\Infinity\_SCS\_C\_Fig\_07B\_GE\_PrimeFarmland\_17111\_20140224.mxd - Last Saved 2/26/2014

