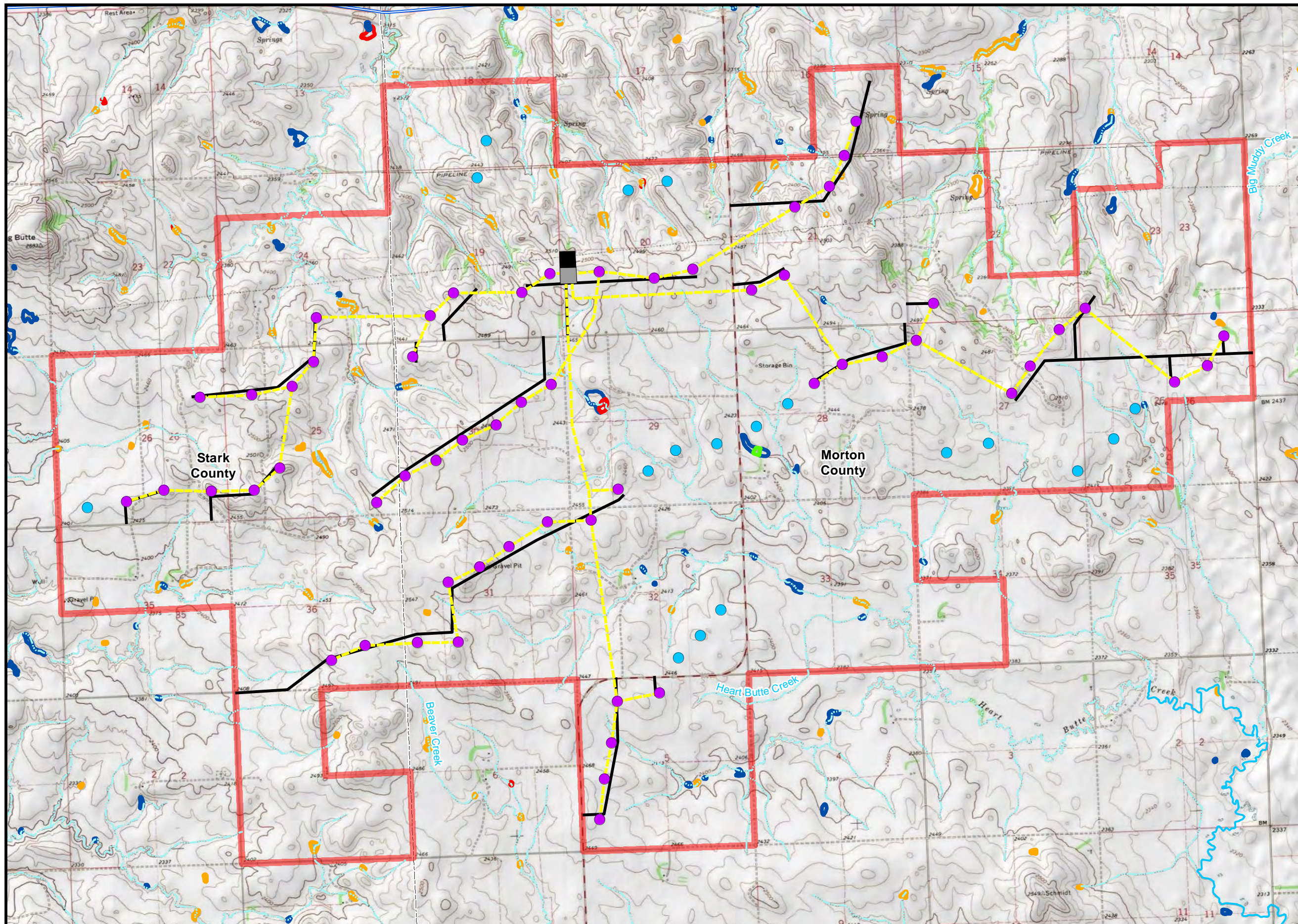


Sunflower Wind Project
Application for North Dakota
Certificate of
Site Compatibility

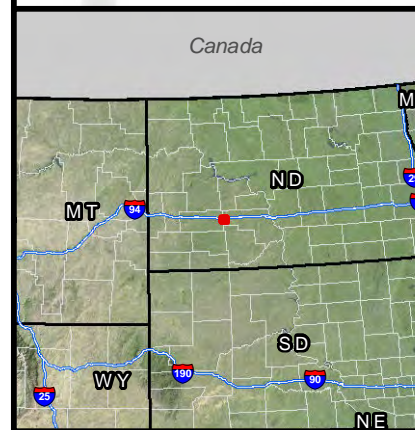
Figure 9B
Wetlands and
Surface Waters
GE 1.85-87

Morton and Stark Counties, ND
February 2014



- Project Area
- Turbine Location*
- Alternate Turbine Location*
- Approximate Underground Collection System Routing
- Approximate Access Road Routing
- Proposed Substation
- County Boundary
- Interstate Highway
- NHD Stream Type**
- Perennial Stream
- Intermittent Stream
- NWI Wetland Type**
- Freshwater Emergent Wetland
- Freshwater Forested/Shrub Wetland
- Freshwater Pond
- Other Freshwater Wetland

*The Project would utilize up to 59 GE 1.85-87 turbines; however, 76 potential GE turbine locations are included on this figure to account for alternate locations that may be used.



P:\GIS_PROJECTS\Infinity_Wind_Power\Sunflower_ND\PSC_CSC\MXDs\CSC\Infinity_SCS_C_Fig_9B_GE_WatersWetlands_17111_20140224.mxd - Last Saved 2/26/2014

