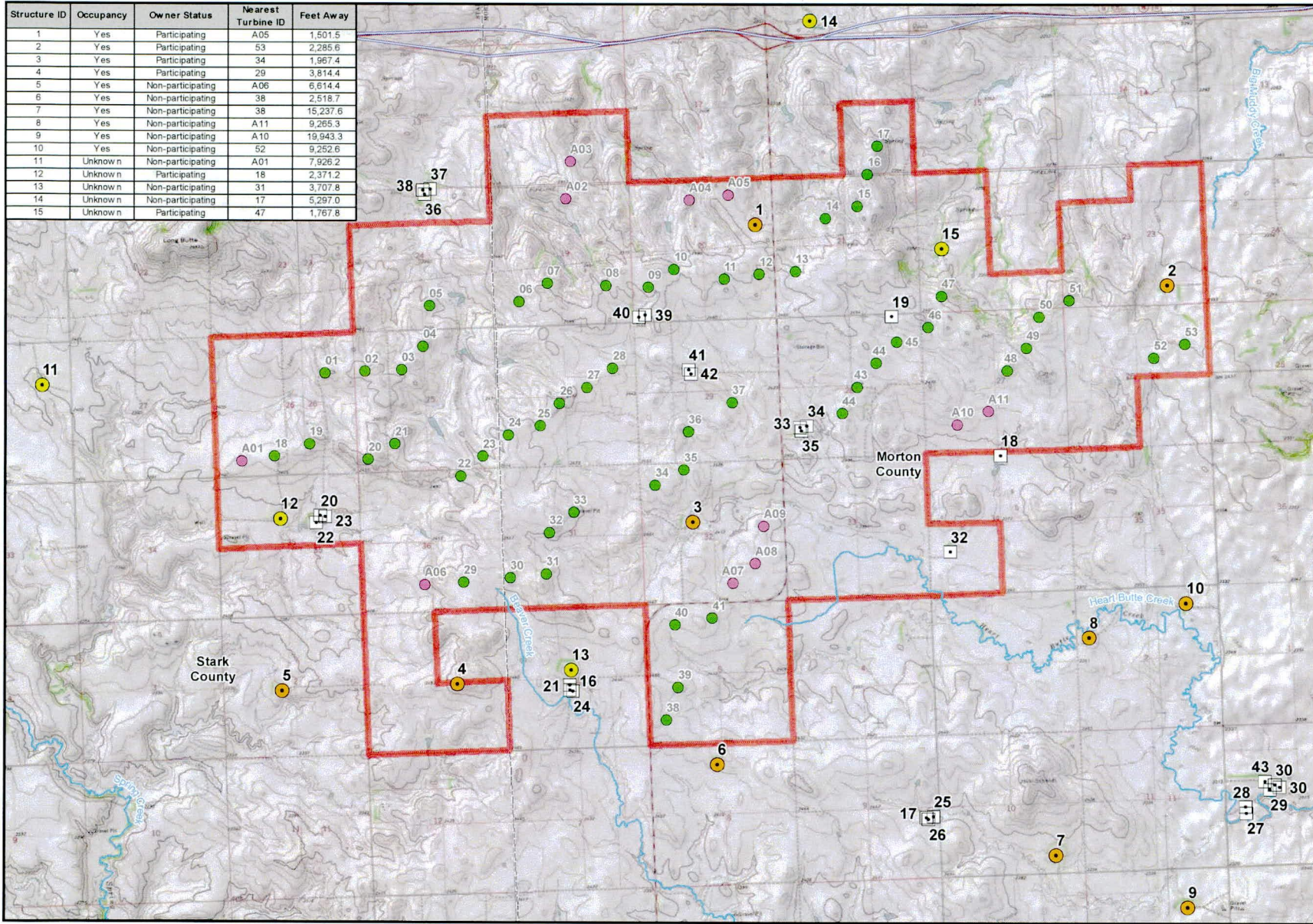


Structure ID	Occupancy	Owner Status	Nearest Turbine ID	Feet Away
1	Yes	Participating	A05	1,501.5
2	Yes	Participating	53	2,285.6
3	Yes	Participating	34	1,967.4
4	Yes	Participating	29	3,814.4
5	Yes	Non-participating	A06	6,614.4
6	Yes	Non-participating	38	2,518.7
7	Yes	Non-participating	38	15,237.6
8	Yes	Non-participating	A11	9,265.3
9	Yes	Non-participating	A10	19,943.3
10	Yes	Non-participating	52	9,252.6
11	Unknown n	Non-participating	A01	7,926.2
12	Unknown n	Participating	18	2,371.2
13	Unknown n	Non-participating	31	3,707.8
14	Unknown n	Non-participating	17	5,297.0
15	Unknown n	Participating	47	1,767.8



**Sunflower Wind Project
Application for North Dakota
Certificate of
Site Compatibility**

**Figure 3-A1
Turbine ID's and
Structure Locations
Vestas 2.0 V-110**

Morton and Stark Counties, ND
May 2014

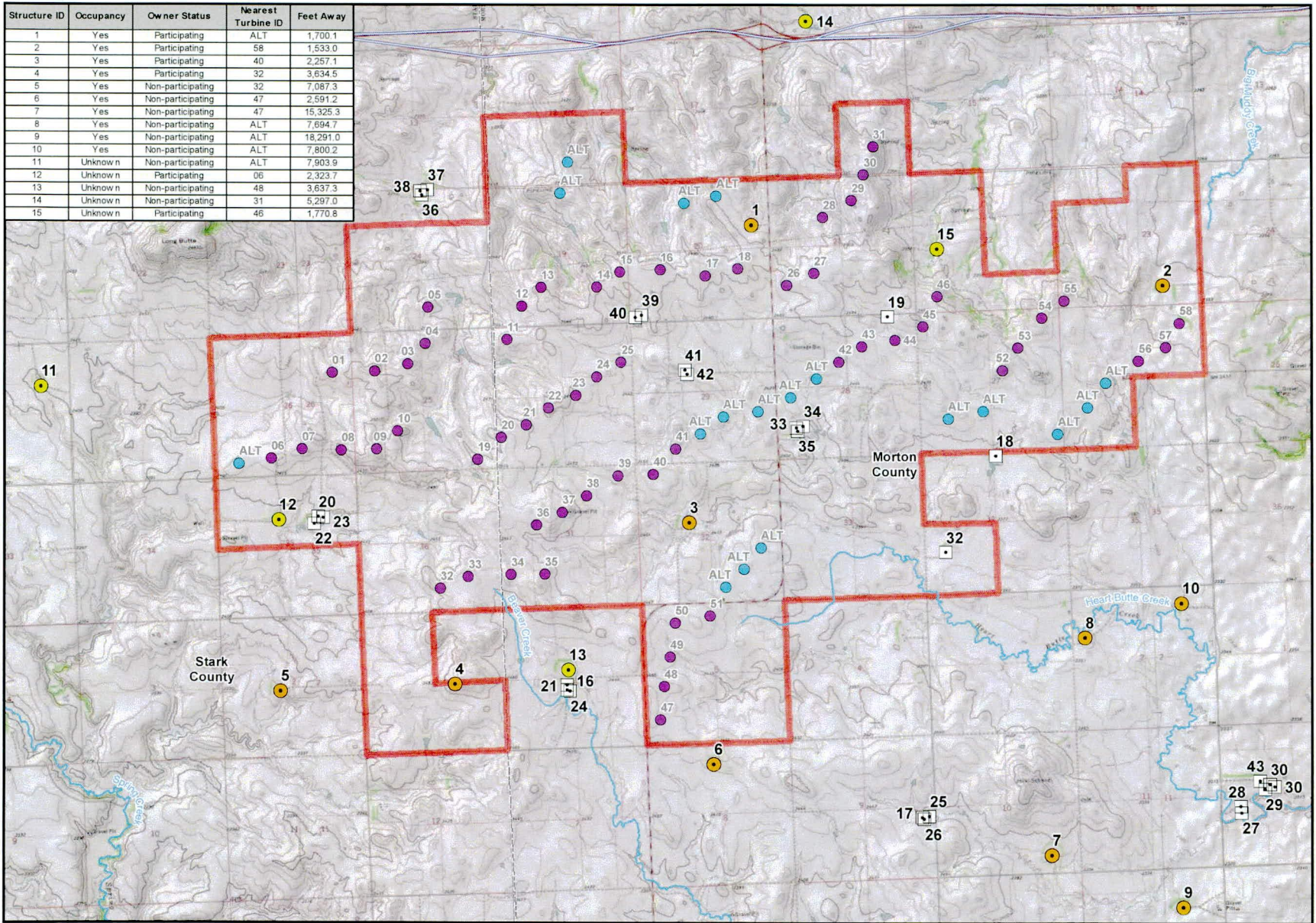
- Project Area
- Turbine Location*
- Alternate Turbine Location*
- Occupied Residence Structure (Occupation Unknown)
- Unoccupied Structure
- County Boundary
- Interstate Highway
- Stream or River

*The Project would utilize up to 55 Vestas V-110 turbines; however, 64 potential Vestas turbine locations are included on this figure to account for alternate locations that may be used.



1:42,500 WGS84 UTM Zone 13N 0 2 4 Miles

Structure ID	Occupancy	Owner Status	Nearest Turbine ID	Feet Away
1	Yes	Participating	ALT	1,700.1
2	Yes	Participating	58	1,533.0
3	Yes	Participating	40	2,257.1
4	Yes	Participating	32	3,634.5
5	Yes	Non-participating	32	7,087.3
6	Yes	Non-participating	47	2,591.2
7	Yes	Non-participating	47	15,325.3
8	Yes	Non-participating	ALT	7,694.7
9	Yes	Non-participating	ALT	18,291.0
10	Yes	Non-participating	ALT	7,800.2
11	Unknown	Non-participating	ALT	7,903.9
12	Unknown	Participating	06	2,323.7
13	Unknown	Non-participating	48	3,637.3
14	Unknown	Non-participating	31	5,297.0
15	Unknown	Participating	46	1,770.8



**Sunflower Wind Project
Application for North Dakota
Certificate of
Site Compatibility**

**Figure 3-A2
Turbine ID's and
Structure Locations
GE 1.85-87**

Morton and Stark Counties, ND
May 2014

- Project Area
- Turbine Location*
- Alternate Turbine Location*
- Occupied Residence
- Structure (Occupation Unknown)
- Unoccupied Structure
- County Boundary
- Interstate Highway
- Stream or River

*The Project would utilize up to 59 GE 1.85-87 turbines; however, 76 potential GE turbine locations are included on this figure to account for alternate locations that may be used.

