

Hamre, John G.

From: Lein, Jerry R.
Sent: Monday, February 29, 2016 3:09 PM
To: Deron Lawrence (dlawrence@sunedison.com)
Cc: Aron Anderson (aanderson@Sunedison.com); Hamre, John G.
Subject: FW: Sunflower Wind Project, LLC – Case No. PU-14-105, Final Layout
Attachments: Sunflower Site Map.pdf; Final Turbine Coordinates_FinalAdjustment.pdf

Dear Mr. Lawrence:

Please consider this email as staff approval of the requested site plan changes as described below and in the attached site map with corresponding turbine coordinates.

Thank you.

Jerry Lein
701 328-1035

From: Deron Lawrence [mailto:dlawrence@sunedison.com]
Sent: Wednesday, February 24, 2016 5:39 PM
To: Lein, Jerry R.
Cc: Aron Anderson; Deron Lawrence
Subject: Sunflower Wind Project, LLC – Case No. PU-14-105, Final Layout

Dear Mr. Lein,

In accordance with Provision No. 34 of the Certification Relating to Order Provisions (Certification), incorporated into the North Dakota Public Service Commission's (Commission) June 25, 2014 Order issuing Certificate of Site Compatibility No. 39, Sunflower Wind Project, LLC (Sunflower Wind) requests Commission Staff approval, with subsequent Commission acknowledgment, of the attached final layout (with accompanying turbine and meteorological tower coordinates). The differences between the enclosed final layout and prior layouts approved by the Commission or Commission Staff are as follows:

- **Turbines:** In its January 7, 2015 Supplemental Order, the Commission issued First Amended Certificate of Site Compatibility No. 39 and approved a layout for the Vestas V-100 2.0 megawatt (MW) turbine. On July 8, 2015, the Commission acknowledged the June 15, 2015 Staff approval of turbine location changes for the Vestas V-100 2.0 MW layout. During final micrositing, the turbines were further adjusted; however, as indicated in the attached table, no turbine shifted over 5 meters from the locations approved in June 2015 and submitted to the Commission in September 2015. Therefore, Sunflower Wind requests approval of the minor turbine adjustments shown in the attached figure.
- **Meteorological Towers:** During the course of Project development, the number of planned meteorological towers changed from one to two to ensure sufficient data collection for the site. The meteorological tower locations also were finalized based on the final turbine layout. Therefore, Sunflower Wind requests approval of the number and location of the meteorological towers shown on the attached layout.
- **Access Roads and Operations and Maintenance (O&M) Building:** Following final micrositing of the turbine layout, the location of the associated access roads, the O&M building site and the laydown area was

finalized. At this time, Sunflower Wind requests approval of the final location of the access roads, laydown area, and O&M building locations identified in the attached layout.

If you have any questions, please email dlawrence@sunedison.com or call 720.390.9304.

Sincerely,

Deron Lawrence
Environmental Permitting Manager
SunEdison
dlawrence@sunedison.com
(720) 390.9304 (cell)

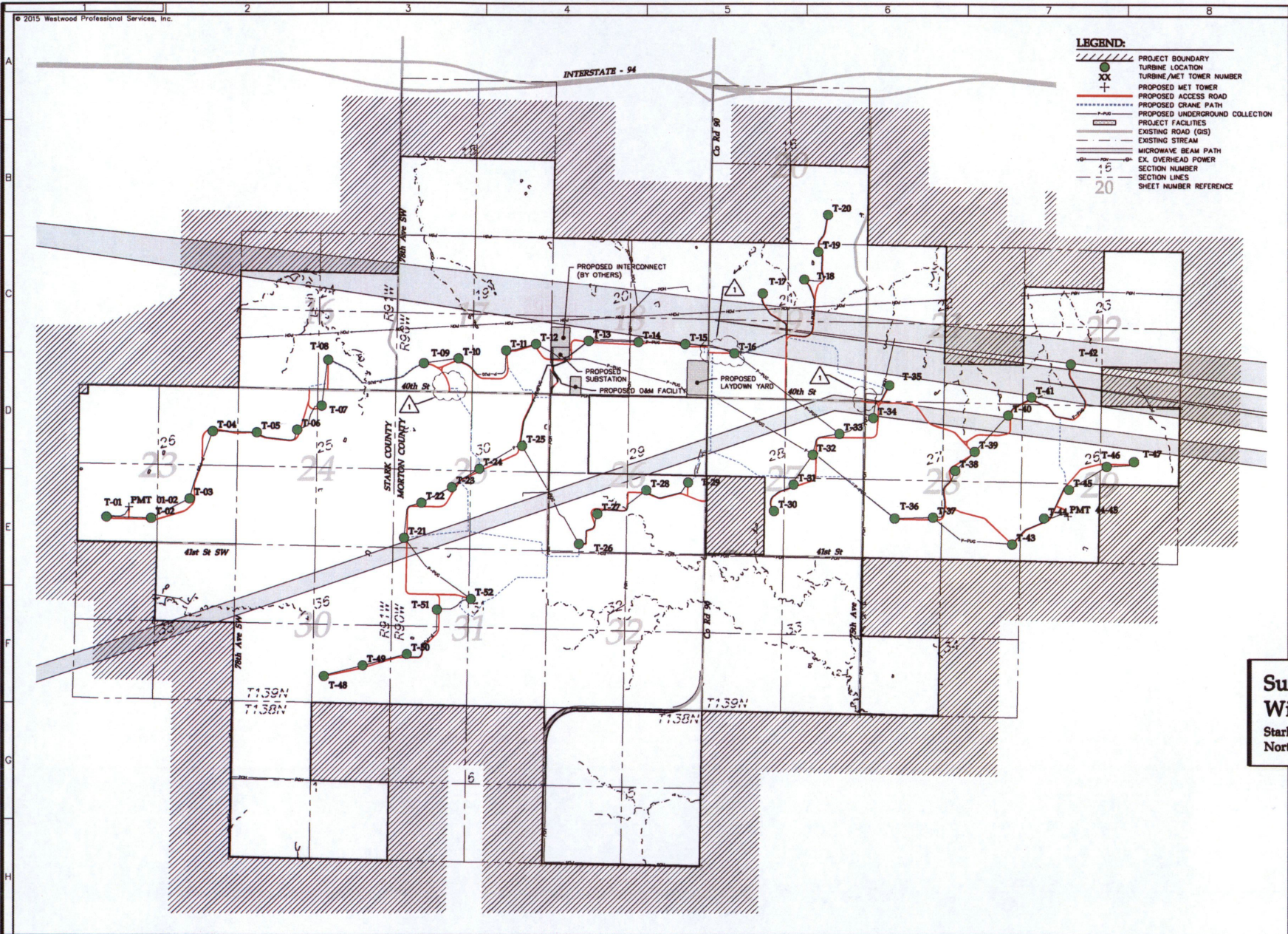
Confidentiality Statement of SunEdison and its subsidiaries: The contents of this message, together with any attachments, are intended only for the use of the individual or entity to which they are addressed and may contain information that is legally privileged and confidential. If you are not the intended recipient, you are hereby notified that any dissemination, distribution, or copying of this message, or any attachment, is strictly prohibited. If you have received this message in error, please notify the original sender immediately by telephone or by return E-mail and delete this message, along with any attachments, from your computer.

No Contract: Regardless of content, this email shall not operate to bind SunEdison or its subsidiaries to any purchase order or contract unless pursuant to a written agreement signed by SunEdison or its subsidiaries expressly permitting the use of email for such purpose.

Confidentiality Statement of SunEdison and its subsidiaries: The contents of this message, together with any attachments, are intended only for the use of the individual or entity to which they are addressed and may contain information that is legally privileged and confidential. If you are not the intended recipient, you are hereby notified that any dissemination, distribution, or copying of this message, or any attachment, is strictly prohibited. If you have received this message in error, please notify the original sender immediately by telephone or by return E-mail and delete this message, along with any attachments, from your computer.

No Contract: Regardless of content, this email shall not operate to bind SunEdison or its subsidiaries to any purchase order or contract unless pursuant to a written agreement signed by SunEdison or its subsidiaries expressly permitting the use of email for such purpose.

This transmission, email and any files transmitted with it, may be: (1) subject to the Attorney-Client Privilege, (2) an attorney work product, or (3) strictly confidential under federal or state law. If you are not the intended recipient of this message, you may not use, disclose, print, copy or disseminate this information. If you have received this transmission in error, notify the sender (only) and delete the message. This message may also be subject to disclosure under the North Dakota Open Records Laws.



LEGEND:

- PROJECT BOUNDARY
- TURBINE/MET TOWER NUMBER
- XX TURBINE/MET TOWER
- PROPOSED ACCESS ROAD
- PROPOSED CRANE PATH
- PROPOSED UNDERGROUND COLLECTION
- PROJECT FACILITIES
- EXISTING ROAD (GIS)
- EXISTING STREAM
- MICROWAVE BEAM PATH
- EX. OVERHEAD POWER
- 15 SECTION NUMBER
- 20 SECTION LINES
- SHEET NUMBER REFERENCE

Westwood
 Professional Services, Inc.
 7800 Arapahoe Drive, Eden Prairie, MN 55344
 Phone (952) 937-0100 Fax (952) 937-0150
 www.westwoodps.com



Designed	LPK	
Checked	WPC	
Drawn	TKH	
Record Drawing by/Date		
Revisions		
1	09/21/15	ISSUED FOR CONSTRUCTION
2	09/30/15	COMMENTS AND DESIGN CHANGES

Prepared for:
Mortenson Construction
 700 Meadow Lane
 Minneapolis, MN 55440

SunEdison
 179 Lincoln Street, Suite 500
 Boston, MA 02111



Sunflower Wind Project
 Stark and Morton Counties,
 North Dakota

Overall Site Plan

Issued for Construction
 Under Army RFP/OWE LAYOUT_00000000_000000
 Date: 09/21/15
 Sheet: 2 OF 94

**Sunflower Wind Project turbine shifts from June 2015 to September 2015/final layout,
and meteorological tower locations.**

Turbine ID		Location difference (m)		Final Location	
June	Sept & Final	June vs. Sept	Sept vs. Final	Easting (m)	Northing (m)
1	1	0.8	0.0	260887	5190089
2	2	1.7	0.0	261335	5190068
3	3	1.4	0.0	261726	5190258
4	4	3.6	0.0	261973	5190946
5	5	3.9	0.0	262417	5190926
6	6	4.9	0.0	262825	5190945
7	7	1.9	0.0	263079	5191188
8	8	2.5	0.0	263155	5191657
9	9	4.4	0.0	264138	5191605
10	10	2.5	0.0	264497	5191647
11	11	0.5	0.0	264992	5191720
12	12	0.5	0.0	265300	5191780
13	13	3.1	0.0	265841	5191803
14	14	3.8	0.0	266349	5191784
15	15	4.5	0.0	266828	5191754
16	16	1.4	0.0	267328	5191651
17	17	1.4	0.0	267632	5192261
18	18	1.4	0.0	268062	5192401
19	19	4.6	0.0	268209	5192685
20	20	4.3	0.0	268316	5193064
21	21	3.5	0.0	263899	5189816
22	22	2.3	0.0	264087	5190172
23	23	3.5	0.0	264402	5190326
24	24	0.8	0.0	264692	5190509
25	25	3.6	0.0	265137	5190736
26	26	0.4	0.0	265700	5189720
27	27	4.3	0.0	265895	5190026
28	28	0.6	0.0	266401	5190259
29	29	1.9	0.0	266829	5190332
30	30	4.5	0.0	267705	5190024
31	31	1.3	0.0	267910	5190291
32	32	4.1	0.0	268113	5190594
33	33	4.5	0.0	268390	5190805
34	34	1.6	0.0	268737	5190961
35	35	4.8	0.0	268909	5191295
36	36	2.9	0.0	268936	5189927
37	37	0.3	0.0	269326	5189930
38	38	3.7	0.0	269561	5190406
39	39	1.5	0.0	269764	5190598
40	40	4.4	0.0	270113	5190965
41	41	2.4	0.0	270356	5191147

Sunflower Wind Project turbine shifts from June 2015 to September 2015 final layout, and meteorological tower locations.

Turbine ID		Location difference (m)		Final Location	
June	Sept & Final	June vs. Sept	Sept vs. Final	Easting (m)	Northing (m)
42	42	3.3	0.0	270763	5191481
43	43	1.1	0.0	270128	5189641
44	44	2.4	0.0	270459	5189902
45	45	1.5	0.0	270720	5190191
46	46	1.5	0.0	271112	5190421
47	47	3.6	0.0	271393	5190466
A1	48	1.8	0.0	263048	5188412
A2	49	2.9	0.0	263448	5188513
A3	50	1.5	0.0	263906	5188621
A4	51	2.1	0.0	264225	5189072
A5	52	4.7	0.0	264577	5189175
A6	Removed	Removed	Removed	Removed	Removed
N/A	PMT 01-02	N/A	N/A	261117	5190187
N/A	PMT 44-45	N/A	N/A	270708	5189919

Please note that the turbine coordinates filed with the Commission on September 16, 2015 were based on a different coordinate system than was used for the final turbine coordinates in this table and the turbine coordinates in Sunflower Wind's June 2015 turbine change approval request. Although the coordinate systems are different, both systems are accurate, and the turbine locations identified in the September 16, 2015 layout are the same as the final locations identified above.