



November 1, 2018

Jerry Lein  
North Dakota Public Service Commission  
600 East Boulevard Avenue, Dept. 408  
Bismarck, ND 58505-0480

RE: Reclamation Inspection  
PU-14-105, Sunflower Wind Project

Dear Mr. Lein:

Carlson McCain, Inc. (CMI) conducted a reclamation inspection at the Sunflower Wind Project (Case No. PU-14-105) on October 24, 2018, on behalf of the North Dakota Public Service Commission (PSC). CMI Inspector, Todd Hartleben met Raitis Sipols, E.ON Energy Services Site Supervisor at the facility office south of Hebron. Reclamation activities at the facility were discussed and a visual inspection of the facility was conducted. The attached Figure depicts the location(s) of photographs taken during the inspections.

Initial reclamation of the facility was completed in the spring of 2017 with some areas re-seeded in 2018. Re-seeding was performed due to lack of vegetation growth caused by drought conditions during the summer of 2017.

A tree and shrub inspection report summarizing the condition of plantings after one year was filed by Solas Energy Consulting in September 2018. It was noted that some trees were replanted in 2018. Continued monitoring of tree survival is recommended to determine planting success.

Overall, reclamation has been successful and there were no areas needing further work noted. On-going maintenance of access roads is anticipated but normal. Please contact me at 701-595-7001 if you have any questions or require additional information.

Respectfully submitted,

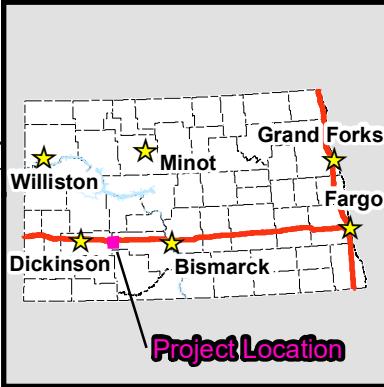
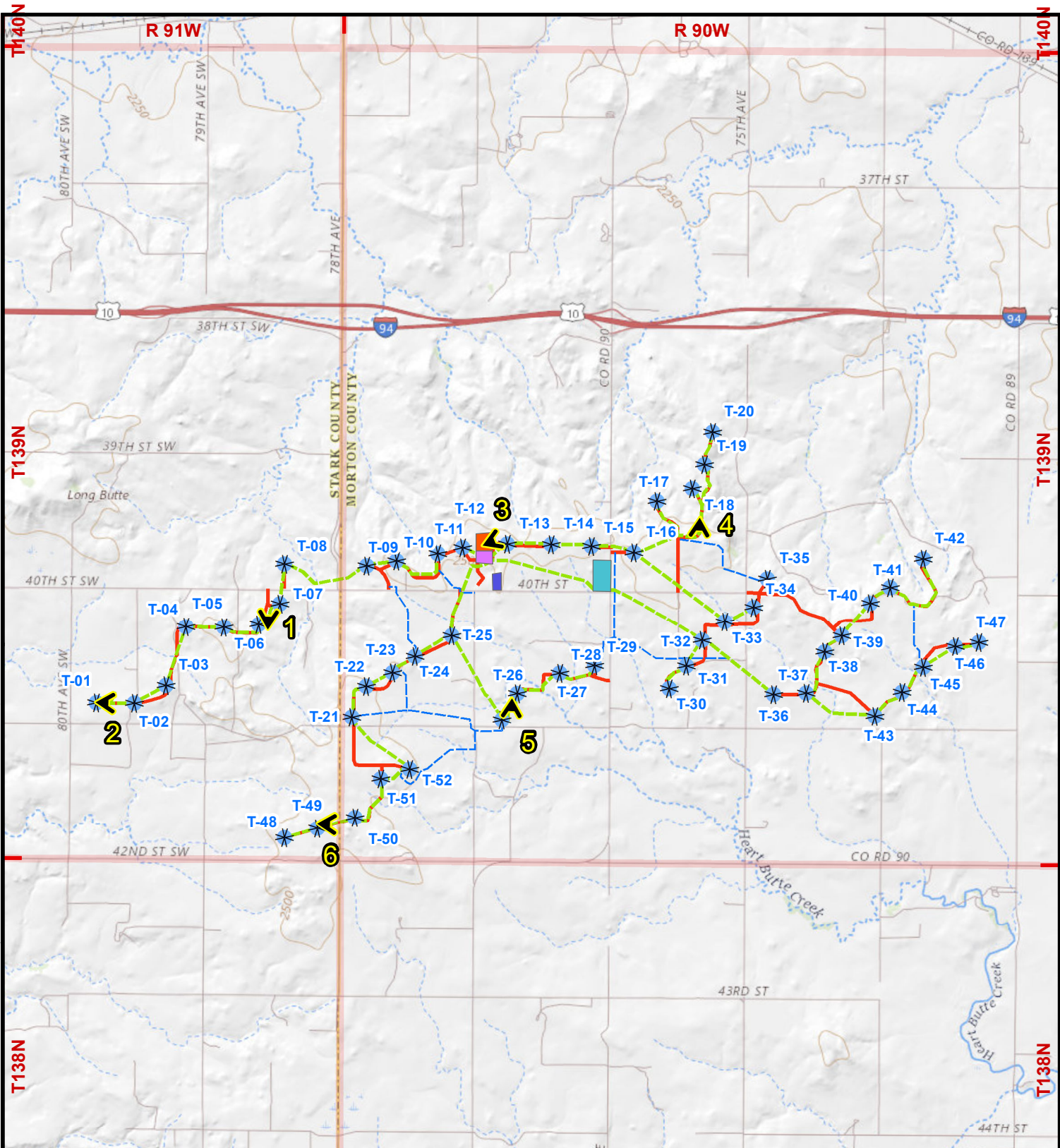
A handwritten signature in blue ink, appearing to read "Todd Hartleben", with a long horizontal flourish extending to the right.

Todd Hartleben  
Principal Engineer

cc: Jordan Huston, Enel Green Power North America, Inc

Attachment

147 PU-14-105 Filed 11/02/2018 Pages: 5  
Reclamation Inspection Report  
Carlson McCain, Inc.  
Todd Hartleben, Principal Engineer



**Legend**

- Photo Point
- Wind Turbine
- Underground Collection
- Access Road
- Crane Path
- Interconnect System
- Laydown Yard
- O&M Facility
- Substation
- Township Line

**Photo Locations**  
**Reclamation Inspection**  
**Sunflower Wind Project**  
**ND Public Service Commission**

0      0.5      1  
 Miles

1:63,360

ENVIRONMENTAL • ENGINEERING • LAND SURVEYING  
 600 South 2nd Street, Suite 105, Bismarck, North Dakota 58504  
 www.carlsonmccain.com

Basemap: USGS/TOPO



Photo 1. Photo taken facing south toward Turbine T6.



Photo 2. Photo of tree planting near Turbine T1. Continued monitoring of tree survival is recommended.



Photo 3. Photo of substation taken facing southwest.



Photo 4. Photo taken facing north along access road to Turbine T18.



Photo 5. Photo taken facing north along access road. Turbine T26 is on the right side.



Photo 6. Photo taken along access road to Turbine T49 (facing west).