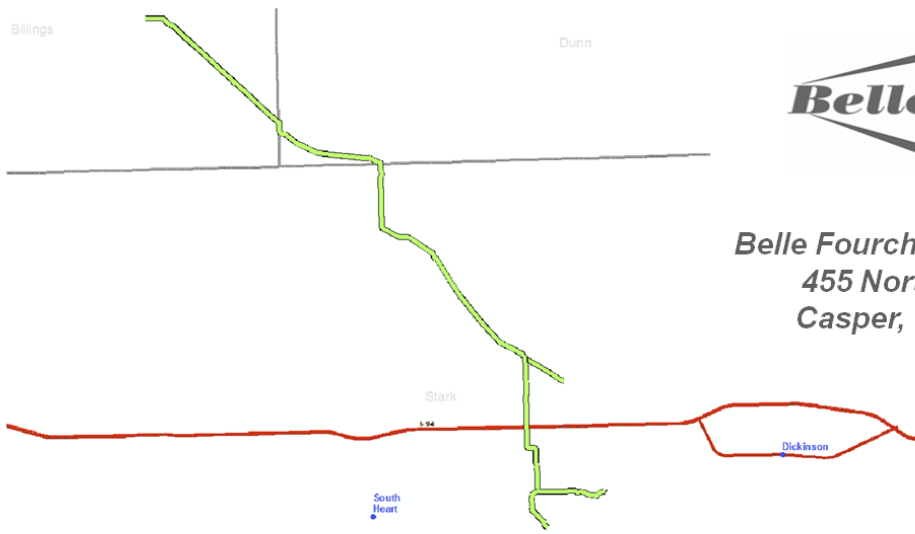


**10-inch Crude Oil Loop Pipeline,
Billings, Dunn, and Stark Counties**

Route Application



Belle Fourche Pipeline Company
455 North Poplar Street
Casper, Wyoming 82602



March 2014

TABLE OF CONTENTS

SECTION A DESCRIPTION OF PROPOSED FACILITY 1

 A.1 Type of Facility 1

 A.2 Product..... 1

 A.3 Size and Design 2

 A.4 Time Schedule3

SECTION B LOCATION..... 5

 B.1 Commitments to Reduce Impact 5

 B.2 Discussion of Factors Listed in NDCC 49-22-09..... 7

 B.3 Discuss Rational for Location with the Corridor 12

 B.4 Relative Effects of Each of the Criteria12

 B.5 Evaluation of Items Within the Designated Corridor38

 B.6 Mitigation Measures39

 B.7 Qualifications of Persons Contributing to this Study 43

 B.8 Maps 43

 B.9 Other Matters43

LIST OF TABLES

TABLE 3.1 North Dakota Public Service Commission Exclusion Areas –
Transmission Facility Siting 13

TABLE 3.2 North Dakota Public Service Commission Avoidance Areas –
Transmission Facility Siting 14

TABLE 3.3 Noxious Weeds Listed Under North Dakota State Law 15

TABLE 3.4 Waterbodies Crossed By the Proposed Pipeline Route..... 19

TABLE 3.5 Roads Crossed By The Belle Fourche 10” Crude Oil Loop Project..... 27

LIST OF FIGURES

FIGURE 3.1 General Project Location Map 4

FIGURE 3.2 North Dakota Natural Heritage Inventory Avoidance Areas..... 33

LIST OF TAB 4 EXHIBITS

- APPENDIX 4.A Archeological and Cultural Assessment Report (Metcalf Archaeological
Consultants, Inc.)
- APPENDIX 4.B Maps of Exclusion and Avoidance Areas
- APPENDIX 4.C Landowner List

SECTION A DESCRIPTION OF PROPOSED FACILITY

A.1 TYPE OF FACILITY

Belle Fourche Pipeline Company (Belle Fourche) proposes to construct and operate a new 20-mile-long, 10-inch liquid petroleum pipeline (Project) that will interconnect with Belle Fourche facilities at Skunk Hills Station and Dickinson Station to supply Bakken Oil Express (BOE) Rail Facility and the Dakota Prairie Refining facility, all in North Dakota. The new section of pipeline parallels an existing Belle Fourche 6-inch line from Skunk Hill Station to Dickinson Station and will be operationally integrated into the existing operations of Belle Fourche.

A new right-of-way (ROW) has been acquired from landowners adjacent to the west and south sides of the existing Belle Fourche ROW for its existing 6-inch pipeline. The pipeline will be buried underground. No new pumping facilities will be needed at this time within North Dakota. Also, no new surface facilities will be installed in the State of North Dakota, other than pipeline markers, rectifiers, and block valves. Some small fenced-in enclosures to house associated power and control systems may be installed to allow some valves to be operated remotely.

The estimated cost of the Project is approximately \$7.9 million.

A.2 PRODUCT

The new pipeline capacity will provide needed capacity to transport increased production of petroleum from western North Dakota where oil production has more than tripled in the last three years.¹ This additional pipeline will increase the capacity of the system by 100,000 barrels per day (bpd) on an annual average. This product is subsequently either delivered to the Dakota Prairie Refining facility or transported via rail at BOE Rail Facility for ultimate delivery to crude markets on the East and West Coast.

Due to the increased volume of crude oil being transported through the existing pipeline, it is necessary for Belle Fourche to install a parallel pipeline to increase the system capacity.

Although Belle Fourche does not explicitly specify the type of crude it will transport; historically it is a sweet common stream system and will continue to accept sweet crude oil into its common stream. Belle Fourche does not have any plans to accept any other crude other than sweet crude.

Generally, liquid pipelines are designed at a specified capacity for a known liquid. Most liquid pipelines transport a variety of different liquids. The change in fluid characteristics (density, viscosity, etc.) of the transported liquids will affect the capacity of the pipeline. Liquids are also batched in a pipeline generally in a repeatable sequence. Both fluid characteristics and batch sequence will affect the capacity of the pipeline.

¹ ND Department of Mineral Resources. "ND Historical Barrels of Oil Produced by County". Available at <https://www.dmr.nd.gov/oilgas/stats/countymot.pdf> Accessed December 13, 2013.

A.3 SIZE AND DESIGN

- a. Width of ROW;
- b. Estimated distance between surface structures such as manholes or block valves;
- c. Pipe size;
- d. Approximate length of facility;
- e. Maximum design operating pressure and temperature;
- f. Maximum design flow rate; and
- g. The number and general location of compressor or pumping stations

A.3 (a) Width of the ROW

Construction work space will be approximately 75 feet wide to allow adequate room for topsoil separation, work equipment and pipe stringing. Additional temporary work space may be necessary during construction in areas such as steep slopes and staging areas for streams, wetlands, and road crossings, for safety reasons, to provide an area for prefabrication of a section of pipeline, or for storage of top soil and subsoil material. Belle Fourche also has access to the adjacent 50 feet of ROW to the east from its existing line ROW.

In most cases, the Project will be installed 25 feet west or south of the existing pipeline. The distance has been established based on the following criteria:

- Provision of adequate space and line separation for future line maintenance, and
- Allowance of adequate space to facilitate construction of the 10-inch pipeline while minimizing potential damage to the existing lines.

A.3 (b) Estimated Distances between Surface Structures

Surface structures will be limited to pipeline markers and rectifier sites, which are part of the cathodic protection system.

A.3 (c) Pipe Size

The pipe to be installed will have a 10-inch outside diameter, 0.188in wall, X52, and be FBE coated pipe. The maximum allowable operating pressure will be 1440 psig.

The valves to be installed will be 10-inch 600# ANSI, flanged end, full port ball valves. These valves will be manufactured in accordance with API Standard 6D "API Specification for Steel, Gate, Plug, Ball and Check Valves for Pipeline Service". The maximum allowable operating pressure of the valve will be 1440 pounds of pressure per square inch gauge ("psig").

A.3 (d) Approximate Length of Facility

The Project is expected to install approximately 20 miles of pipe.

A.3 (e) Maximum Design Operating Pressure and Temperature

The estimated capacity of the Project will be 100,000 bpd. The maximum allowable operating pressure of this pipe will be 1440 psig. The maximum temperature of the petroleum will be 80°F.

A.3 (f) Maximum Design Flow Rate

The design flow rate of the Project is 100,000 bpd.

A.3 (g) The Number and General Location of Pumping Stations

Pumping units will be installed within Belle Fourche existing Skunk Hills Crude Station. No new mid-route stations will be necessary at this time.

A.4 TIME SCHEDULE

Belle Fourche proposes to develop the Project on the following time schedule:

A.4 (a) Certificate of Corridor Compatibility

Corridor permit application is being submitted in March 2014 as part of this consolidated Certificate of Corridor Compatibility and Route Application. Approval is expected on or before April 30, 2014.

A.4. (b) Route Application

Route application is being submitted in February 2014 as part of this consolidated Certificate of Corridor Compatibility and Route Application. Approval is expected on or before April 30, 2014.

A.4 (c) Route Permit

Expected on or before April 30, 2014.

A.4 (d). Construction Start Date

Proposed commencement date for construction is May 1, 2014.

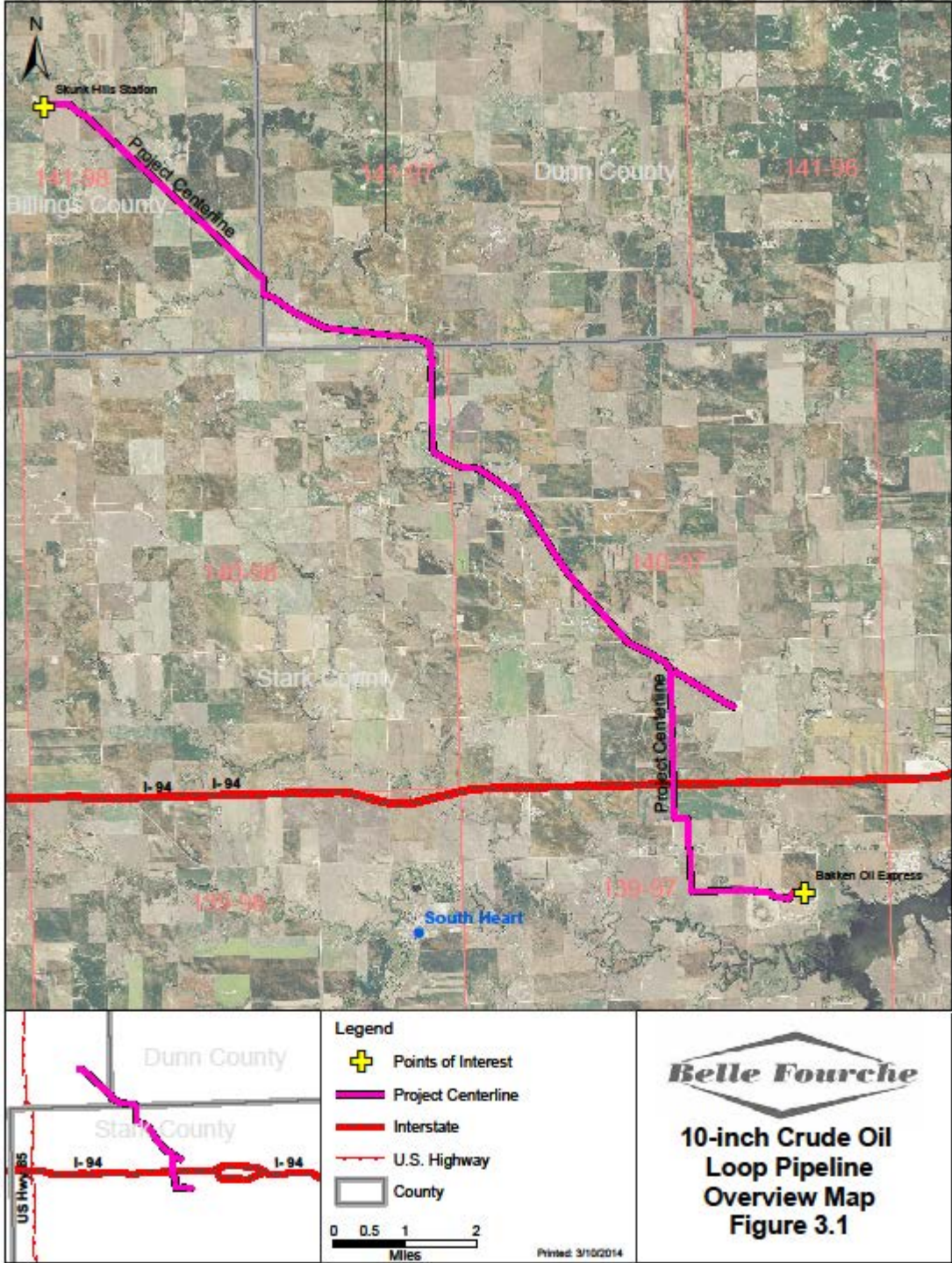
A.4 (e) Construction Complete

Estimated construction completion date is on or before August 31, 2014.

A.4 (f) In Service Date

Estimated in service date is on or before September 1, 2014.

FIGURE 3.1 – General Project Location Map



Keitu Engineering & Consultants, Inc.

SECTION B LOCATION

B.1 APPLICANT'S POLICIES AND COMMITMENTS TO LIMIT ENVIRONMENTAL IMPACT

Belle Fourche is a liquids pipeline operator that gathers and transports crude oil in the Williston Basin of western North Dakota and the Powder River Basin of Wyoming.

Belle Fourche, Bridger Pipeline, LLC and Butte Pipeline Company are all part of the True Companies of Casper, Wyoming operating pipeline systems in western North Dakota, eastern Montana and Wyoming. The True Companies have been family owned and operated since 1948, and now have over 1000 employees in Wyoming, Colorado, Montana, North Dakota, Utah, Texas, Louisiana, Mississippi, New Mexico, Missouri, Oklahoma and Arizona.

Belle Fourche works to protect the environment, home to its employees and customers. Protection of the environment is an integral element in the conduct of Belle Fourche. Environmental protection efforts will span the entire Project, from planning through construction, restoration, and into full operation.

B.1.a Construction

The Project involves looping (i.e. laying a parallel section of pipeline) an existing 6-inch pipeline in newly acquired ROW adjacent its existing line. Construction of the new 10-inch-diameter pipeline will result in temporary short-term impacts, but is not expected to result in significant long-term change to the environment.

Planning, design, construction, and restoration will incorporate the equipment and measures discussed in section B.6. Environmental Monitoring, in the form of ongoing environmental inspection, will be conducted during and following construction. Environmental inspectors will monitor compliance with required environmental protection measures, permit conditions, and specifications, and provide ongoing oversight for day-to-day issues that may arise during construction. The environmental inspectors will be trained and well-versed in the implementation of environmental best management practices during construction. Contract specifications will incorporate environmental protection and mitigation measures, and contractors will be expected to implement these measures in the field. Contractor training and Project orientation will also be provided by Belle Fourche.

The majority of the proposed pipeline route is located on private land and landowner concerns will be addressed during all phases of construction including final restoration. Land agents assigned to the Project will work closely with landowners to the extent practicable, be responsive to issues that may arise during the course of the Project. Permission and all private land owners have already been obtained.

Environmental data collected to date includes information on soils, land use, wetland and water body crossings, protected species, and cultural resources. Belle Fourche will continue to work with appropriate regulatory agencies and will continue to gather comprehensive information during the permitting process.

B.1.b Ongoing Pipeline Operation

The pipeline is a permanent, ongoing system; as such, Belle Fourche has a continuing commitment to conduct its operations in an environmentally responsible manner. Substantial, continual effort is placed on pipeline integrity, operational safeguards, emergency response, and landowner relationships, all of which reduce the impact of the pipeline to the environment. The Company supplements the support from the existing internal environmental staff with engineering and environmental consultants as necessary to assure compliance with environmental regulations and applicable Company policy. Additional discussion on operations and safety is provided in section B.9.c.

B.1.c Energy Conservation Considerations

Installation of a 10-inch parallel line to the existing Skunk Hill to Dickinson to BOE Rail Terminal pipeline section in Belle Fourche North Dakota pipeline network will add additional pipeline capacity on its system. The total crude petroleum throughput increase is expected to be proportionately higher than the energy usage (actual kilowatts per hour) increase.

However the key energy economic impact will be the substitution of the most energy efficient mode of crude oil transportation, e.g. pipeline for the least efficient mode of transportation, e.g. on-road transport via cargo tanker truck. Installing this new segment will open 100,000 barrels per day of capacity from an existing system which will be used to move crude oil to the Dakota Prairie Refining facility or BOE Rail Terminal. The product to BOE Rail Terminal will ultimately be delivered to crude markets on the East and West Coast.

Beyond the direct energy benefit of using a more efficient mode of transportation, energy conservation is a major concern at Belle Fourche. Energy/power costs represent the largest single recurring expense in pipeline operation. Attention is continually being directed toward energy conservation.

Belle Fourche's energy conservation goal is to minimize power/energy unit costs, through the implementation of internal programs directed at continuous improvement of energy utilization efficiency. The following provides a brief explanation of the programs reviewed during the Project development phase:

Pipeline Control Center

Belle Fourche control operators are trained in applied hydraulics and pipeline control through the use of a computerized pipeline control simulation system. They are trained to operate the pipeline at a natural flow rate using efficient combinations of pumps, thereby minimizing energy consumption. Operators have the capability to start and stop pumps and monitor pipeline operating conditions to assist in achieving an energy efficient operation.

Energy Efficient Pumps and Motors

For new installations, Belle Fourche purchases high efficiency pumps and motors at a premium initial cost in an effort to conserve long range energy requirements. Specifically, a high polish is used on the pump impeller, and motors are custom designed for high efficiency. For example, a fully loaded 2,500 horsepower pump and motor unit, operating 300 days per year at 80% efficiency will consume 17 million kilowatt hours (kWh) of energy annually and sets a demand of 2,331 kW. Increasing the efficiency by only 1% translates into 170,000 kWh of energy savings. With this substantial potential for energy savings, it is desirable to optimize efficiency. Pumps are hydraulically designed and selected to obtain a high best efficiency point (BEP) at the desired flow rates. The forecasts are continually being evaluated and if the flow rate is outside the BEP range, impeller changes are typically implemented for improved efficiency.

Drag Reducing Agents (DRA)

Belle Fourche currently uses drag reducing agents in selected segments of its pipeline system. Injection of DRA reduces flow turbulence of liquid hydrocarbons which results in reduced pressure loss between stations. This allows a high flow rate (increased throughput) at the same operating pressure, or a decrease in operating pressure while maintaining flow rate. These two scenarios allow increased throughput or decreased power use. The flexibility furthers opportunities to shift power use to improve economics or accommodate the utilities. In these cases, the economic benefits realized with the implementation of the DRA program have outweighed the material cost of the DRA. As a result, lower unit energy costs and greater efficiency have occurred.

Other energy efficiency programs being investigated for future implementation include:

- Enhancements to the pipeline control system to allow further energy use optimization;
- Coordination of our energy use between utilities for mutual benefit; and
- Improve pump efficiency by upgrading to geometrically optimized pump wear rings.

B.2. DISCUSS THE FACTORS LISTED IN SECTION 49-22-09 NDCC TO AID THE COMMISSION'S EVALUATION OF THE PROPOSED PIPELINE ROUTE

Factors which the North Dakota Public Service Commission (ND PSC or Commission) consider in evaluating the designation of corridors and routes include the following:

B.2.a. Available Research and Investigations Relating to the Effects of the Location, Construction, and Operation of the Proposed Facility on Public Health and Welfare, Natural Resources, and the Environment

A discussion of the effects of the location, construction, and operation of the pipeline on public health and welfare, natural resources, and the environment is included in section B.4. As well as the Application for Corridor Certificate presented in Tab 1. Research and investigation relating to these effects have included thorough cultural resource reviews, protected species and sensitive area reviews, and a field studies conducted during September 2012 and November 2013.

B.2.b. The Effects of New Energy Conversion and Transmission Technologies and Systems Designed to Minimize Adverse Environmental Effects

The Project does not include new energy conversion or transmission technologies. The pipeline design is consistent with existing pipeline technologies. However as described in section B.1.c above, Belle Fourche is constantly evaluating new energy conservation technologies to reduce the energy consumed in its operations.

B.2.c The Potential for Beneficial Uses of Waste Energy from a Proposed Energy Conversion Facility

The Project does not involve new energy conversion facilities; no usable waste energy will result from the Project.

B.2.d Adverse Direct and Indirect Environmental Effects, Which Cannot be Avoided Should the Proposed Site or Route be Designated

Unavoidable adverse direct and indirect environmental effects may include short-term or temporary effects on vegetation, wildlife, agricultural operations, transportation, and noise levels as described in section B.4, however since construction is scheduled to begin and be completed on an accelerated timeline, impacts to agricultural operations will be minimal and impacts to transportation will be short-term. Belle Fourche will implement thorough mitigation measures to minimize these impacts as described in its Environmental Mitigation Plan (EMP) presented as Tab 5 and Tab 6 in this consolidated application.

B.2.e Alternatives to the Proposed Site, Corridor or Route, Which are Developed During The Hearing Process and Which Minimize Adverse Effects

The pipeline corridor provides an established, direct route between Skunk Hill Station and Dickinson Station. This corridor was originally selected to avoid or minimize environmental and socioeconomic impact and largely parallels the existing Dickinson Line pipeline route. Use of this corridor takes advantage of Belle Fourche's existing ROW, and mostly or in large part avoids the establishment of new permanent ROW and new severance on properties. No other corridor will offer these advantages over the pipeline route.

The Dickinson Station to BOE Rail Terminal segment of the Project was rerouted after Belle Fourche became aware of plans by the North Dakota Department of Transportation (DOT) to construct on- and off-ramps on Interstate 94 near where the pipeline crosses the interstate. The new ROW was purchased in an effort to reduce potential conflicts between the Project and the DOT development project.

B.2.f Irreversible and Irretrievable Commitments of Natural Resources Should the Proposed Site, Corridor or Route be Designated

Belle Fourche is installing the pipeline within a previously disturbed corridor and, therefore, minimal irreversible or irretrievable commitments of natural resources will result from the Project.

B.2.g The Direct and Indirect Economic Impacts of the Proposed Facility

The Project presents an optimization of new and existing pipeline capacity to meet the needs for additional liquid petroleum transportation to this region. Belle Fourche's proposal represents an optimal use of new and existing pipelines on an existing route. Belle Fourche's shippers support Belle Fourche's proposal to be an appropriate economical response to the need for additional capacity.

As described in the Application for Corridor Certificate presented as Tab 1 section C.1.a of this consolidated application, crude oil production in North Dakota has tripled in the past few years. Oil production in North Dakota is expected to continue to grow until 2025. The purpose of the Project is to provide "midstream" transportation alternatives for the expanding volumes of crude oil produced in North Dakota. The pipeline will also supply the Dakota Prairie Refining facility. Dakota Prairie Refinery, when complete, will be the first Greenfield refinery built in the U.S. since 1976. It is a joint project with MDU Resources and Calumet Specialty Products Partners, L.P. to develop, build and operate a 20,000-barrel-per-day diesel topping plant in southwestern North Dakota.²

Rail transportation of crude oil from the Bakken has surged in recent years. Rail transportation to east and west coast crude oil markets allows for producers in ND to get a better price on their crude oil.

The cost of the Project in North Dakota will be approximately \$7.9 million. Approximately 50+ construction workers will be hired from pipeline contractors, equipment contractors, suppliers, and regional testing firms. Forty to fifty percent of the labor force is expected to be hired from the regional labor pool. In addition, environmental consultants and safety, environmental, and construction inspectors will also be employed during the Project. During the months of preparation, construction, and testing, these workers will have a significant positive economic impact (e.g., payroll tax, local expenditures, sales tax) on Billings, Dunn, and Stark Counties.

Pipe and other materials for the expansion are all expected to be from U.S. and North American suppliers. Much of the materials and equipment needed for construction, including welding supplies, heavy equipment, electrical components, and building materials will be supplied from this region. Operation of the Project may require Belle Fourche to hire at least two new full-time permanent employees.

Belle Fourche owns and operates a non-shipper-owned liquid hydrocarbon pipeline facility. Belle Fourche does not own any of the crude petroleum or natural gas liquids

² Calumet Specialty Products Partners, LP, Dakota Prairie Refinery Project, available at <http://www.calumetspecialty.com/dakota-prairie-refinery-project> (accessed December 23, 2013).

transported in its pipeline system. Belle Fourche does not determine markets or destinations for petroleum commodities. Belle Fourche's business activity is to provide a service which is available to anyone tendering commodities for transportation pursuant to tariffs published and on file with the FERC and in accordance with their rules and regulations and the Interstate Commerce Act. Belle Fourche attempts to anticipate the need for additional pipeline capacity by relying upon forecasts for throughput generated by shippers on the system.

B.2.h Existing Plans of the State, Local Government, and Private Entities for Other Developments at or in the Vicinity of the Proposed Site, Corridor, or Route

Belle Fourche is aware of one other development by state, local or governmental entities at or in the vicinity of the Project corridor. Belle Fourche is planning the Project, which will bury 10-inch petroleum pipeline within or adjacent to the existing Belle Fourche corridor. One route deviation was required from the existing ROW. Belle Fourche was informed of the ND Department of Transportation (DOT)'s intent to construct on- and off-ramps on I-94 near the existing pipeline location. The Project route was modified slightly to avoid any further conflicts with the DOT project.

Belle Fourche is aware of another petroleum transmission system project currently underway in the vicinity, namely Bakken Oil Express, LLC's expansion of capacity within its pipeline by the addition of a 16 inch diameter pipeline from Killdeer, ND to the BOE Rail facility. Bakken Oil Express, LLC's project and Belle Fourche's proposed Project are complimentary to each other. Both pipelines are working to expand the available capacity for crude oil produced in North Dakota to be shipped via rail to east, west and gulf coast crude oil markets.

B.2.i The Effect of the Proposed Site or Route on Existing Scenic Areas, Historic Sites And Structures, and Paleontological or Archaeological Sites

Metcalf Archaeological Consultants, Inc. of Bismarck, North Dakota was engaged to review existing site file data maintained by the State Historical Society of North Dakota (SHSND), State Historic Preservation Office (SHPO) to determine if any portion of the pipeline route was surveyed previously for cultural resources. Topographic maps and aerial photography were reviewed to determine the amount of pedestrian survey as advised by the NDSHPO State Archaeologist. Unplowed regions, landforms such as prominent hills, terraces, and any other water related landform were surveyed. After determining the areas for inventory, the proposed corridor was inventoried by walking parallel pedestrian transects 20 meters apart across the Area of Potential Effect (APE).

Six cultural resources were recorded: historic dumps 32B11116 and 32SK1070, historic cultural material scatter 32DU1789, and prehistoric isolated finds 32B1x919, 32B1x920, and 32SKx363. Metcalf Archaeological Consultants, Inc. considers that none of the cultural resources satisfy any of the criteria necessary to be eligible for the National Register of Historic Places and no further work is necessary. Metcalf Archaeological Consultants, Inc. recommends a determination of *No Historic Properties Affected* (36CFR800.4[d][1]) for the undertaking as inventoried, mapped, and documented herein.

After the initial inventory in September 2012, it became necessary to reroute approximately 4.6 miles of the Project corridor near the south end. Metcalf Archaeological Consultants, Inc. was engaged to conduct a Class III cultural resource inventory on the reroute. No cultural resources were encountered during this addendum inventory. A finding of *No Historic Properties Affected* is recommended for this undertaking as surveyed, mapped, and documented herein.

A copy of Metcalf Archaeological Consultants, Inc. report and addendum is presented as Tab 4 Attachment A.

B.2.j The Effect of the Proposed Route on Areas Which Are Unique Because of Biological Wealth or Because They are Habitats for Rare and Endangered Species

Contacts have been made with the North Dakota Game and Fish Department (NDGFD), the U.S. Fish and Wildlife Service (FWS), and the North Dakota Parks and Recreation Department's North Dakota Natural Heritage Inventory System to identify species and ecologically significant habitats within the ROW and the Project corridor. Possible areas of concern discussed were federally listed endangered, threatened, candidate, sensitive, or watch species, state-listed protected species, and critical habitat that is located on or within the pipeline route.

The NDGFD was provided with the proposed route and is currently under review. Areas that will be analyzed by the department will be state-listed protected species or unique biological areas with the proposed route.

The FWS was provided with the proposed route and is currently under review. Areas that are analyzed by the FWS include federally listed endangered, threatened, and candidate species in North Dakota.

A field survey was conducted in September 2012 using a 500-foot-wide corridor for botany and a 1-mile wide corridor for wildlife, in accordance with US Fish and Wildlife Service field study protocols. A second field survey was conducted in November 2013 for a portion of the pipeline route that was relocated. No sensitive wildlife or botany issues were identified within the corridor. The results of this field study are presented in Section B.4.i in the route permit application submitted as part of this consolidated permit application.

The North Dakota Natural Heritage Inventory System listed Species of Concern in the state that have been identified within the Project area (Section B.4.i). The field study concluded that the Project area is within safe distance from the species listed and will not have an effect on the species or their habitat.

B.2.k Problems Raised by Federal Agencies, Other State Agencies, and Local Entities

No problems or concerns other than those identified in section B.2.j have been raised by commenters or identified by Belle Fourche, or its consultants.

B.3. IDENTIFY AND MAP CRITERIA LEADING TO PROPOSED PIPELINE ROUTE LOCATION WITHIN CORRIDOR

The following criteria, which include but are not limited to the criteria required by North Dakota Administrative Code Chapter 69-06-08-02, were considered in evaluating the location of the pipeline route: Exclusion and Avoidance Areas, Selection and Policy Criteria, Design and Construction Limitation, Economic Considerations, Human Environment, Soils, Vegetation/Wildlife, Land Use, Water Resources, and Cultural Resources. Each criteria is discussed in detail, including descriptions, potential impacts, and mitigation measures where appropriate are given in sections B.4, B.5, and B.6.

B.4. RELATIVE VALUE AND EFFECTS UPON EACH CRITERION INCLUDING LOCATION, CONSTRUCTION, AND OPERATION OF THE FACILITY

In accordance with Chapter 69-06-08-02, the pipeline route has been developed after consideration of its impact on humans and the environment. Adverse effects of construction of the pipeline are substantially minimized by using the existing Belle Fourche ROW. Alternative routes or options, which are discussed in Tab 1 section C.2 of the Application for Corridor Certificate, are not preferable and will typically result in more significant impacts.

Underground pipeline installation minimizes potential impacts on human or animal welfare and aesthetics. Construction of the new pipeline will cause temporary disruption to the environment, but will not result in long-term changes to the environment. The following is a general analysis of the existing human and natural environment along the pipeline route and the potential impacts of pipeline ROW preparation, construction practices, and operation and maintenance procedures.

B.4.a Exclusion and Avoidance Areas (North Dakota Rules Chapter 69-06-08-02.1 and 69-06-08-02.2)

The ND PSC has identified certain sensitive or otherwise important environmental features that must be considered during the selection of a route for transmission facilities. These features have been classified as either “Exclusion Areas” or “Avoidance Areas.” As defined in North Dakota Rules Chapter 69-06-08-02.1 and 69-06-08-02.2, Exclusion Areas are areas that are to be excluded from consideration for energy conversion sites and transmission facility routes. Avoidance Areas are areas not to be considered in the routing of a transmission facility unless it is shown that, under the circumstances, there are no reasonable alternatives. Exclusion and Avoidance areas are shown in Tables 3.1 and 3.2 below.

One type of Exclusion Area is located within the study corridor (see Table 3.1 below); however, it is not crossed by the route, nor do the Exclusion Area constitute more than 50% of the one-mile environmental study corridor width.

One type of Avoidance Area were identified within the Project study corridor (see Table 3.2 below). Three rural residences and/or farmhouses were identified within 500 feet of the Project. The residences do not encompass more than fifty percent of the width of

the corridor in any location. Belle Fourche is in the process of obtaining waivers from all landowners.

Tab 4 Appendix B contains maps depicting Exclusion and Avoidance Areas along the pipeline route.

TABLE 3.1 – Exclusion Areas

Exclusion Area	Within Study Area	Crossed By Route	Description of Exclusion Area and Proposed Buffer
Designated or registered national: parks; memorial parks; historic sites and landmarks; natural landmarks; monuments; and wilderness areas	None	None	
Designated or registered state: parks; historic sites; monuments; historical markers; archeological sites; nature preserves	None	None	
County parks and recreational areas; municipal parks; and parks owned or administered by other governmental subdivisions	Yes	None	Patterson Lake is located approximately one half mile from the south end of the pipeline at BOE Rail Terminal
Areas critical to the life stages of threatened or endangered animal or plant species	None	None	
Areas where animal or plant species that are unique or rare to this state would be irreversibly damaged	None	None	
Areas within one thousand two hundred feet of the geographic center of an intercontinental ballistic missile (ICBM) launch or launch control facility	None	None	
Areas within thirty feet on either side of a direct line between intercontinental ballistic missile (ICBM) launch and launch control facilities to avoid microwave interference.	None	None	

TABLE 3.2 – Avoidance Areas

Avoidance Area	Within Study Area	Crossed By Route	Description of Avoidance Area and Proposed Buffer
Designated or registered national: historic districts; wildlife areas; wild, scenic, or recreational rivers; wildlife refuges; and grasslands	None	None	
Designated or registered state: wild, scenic, or recreational rivers; game refuges; game management areas; management areas; forests; forest management lands; and grasslands	None	None	
Historical resources which are not specifically designated as exclusion or avoidance areas	None	None	
Areas that are geologically unstable	None	None	
Within five hundred feet [152.4 meters] of a residence, school, or place of business	Yes (3 – Residences)	None	Landowner Waivers
Reservoirs and municipal water supplies	Yes	None	
Water sources for organized rural water districts	None	None	
Irrigated land	None	None	
Areas of recreational significance which are not designated as exclusion areas	None	None	

B.4.b Selection Criteria (North Dakota Rules Chapter 69-06-08-02.3)

State of North Dakota Rules specify several selection criteria to be considered in designating a pipeline corridor or route. Specifically, the ND PSC considers whether adverse effects from the location, construction, and maintenance of the facility as they relate to these criteria, will be at an acceptable minimum, and whether these effects will be managed and maintained at an acceptable minimum. Potential impacts, as they relate to each of the selection criteria, are discussed below. Measures Belle Fourche will implement to minimize these impacts are noted below and discussed in greater detail in section B.6.

B.4.b. (1) Impact on Agriculture.

The Project will be installed within a new ROW, adjacent to Belle Fourche’s existing pipeline ROW in Billings, Dunn, and Stark Counties in western North Dakota. A significant quantity of the pipeline route will cross agricultural and pasture lands where

crop and livestock production are the extensive economic activity. The primary crops cultivated in the area include wheat, grain, corn, and alfalfa.

Agricultural Production

The Project will generate temporary effects on agricultural land use such as landscape modifications and an introduction of noxious weeds and invasive species when agricultural areas are reclaimed. Belle Fourche will take appropriate management practices to restore all areas to the land owners' satisfaction. Belle Fourche will also implement mitigation requirements to avert the infestation of noxious weeds on reclaimed land. Species that are considered noxious weeds under North Dakota state law are provided in the table below. These noxious weeds will out-compete desirable forbs and grasses in pastures, fields, and native grasslands, reducing biodiversity. Noxious weeds that have been recorded in the county and that are a concern on farm and pasture land are absinth wormwood, field bindweed, leafy spurge, purple loosestrife, Canada thistle, musk thistle, yellow starthistle, diffuse knapweed, Russian knapweed, and spotted knapweed, yellow toadflax, Dalmatian toadflax, and saltcedar. Noxious weeds listed under North Dakota state law are shown in Table 3.3.

Table 3.3 Noxious Weeds Listed Under North Dakota State Law		
Species	Habitat	Impact
Absinth Wormwood	Generally found on dry soils in pastures, cropland, farmsteads, shelterbelts, roadsides, fence rows and waster areas. Infestation occurs on over-grazed or disturbed areas.	Reported to contaminate the milk produced by cattle. Species inhibits grow in desirable forage.
Dalmatian Toadflax	Most competitive in drought prone areas. Often found in soils varying from coarse gravels to sandy loams. Establishes on rangelands, pastures, disturbed areas, and roadsides.	Unpalatable to livestock and will flourish over native species. No record of occurrence in the county.
Field Bindweed	Species is drought tolerant and tends to invade cultivated fields, pastures, roadsides, and waste areas.	Extremely difficult to control. The extensive root system and twine-like growth disrupts harvesting operations and replaces desirable vegetation.
Leafy Spurge	Species adapts to a variety of habitats such as river banks, floodplains, slopes, open woodlands, roadsides, and grasslands. Species commonly associates itself with invasive such as Kentucky bluegrass and smooth brome.	Contains milky latex which causes oral and digestive irritation in cattle. The plant also replaces desirable forage.

Belle Fourche Pipeline Company
Route Application
10-inch Crude Oil Loop Pipeline – Billings, Dunn, and Stark Counties

Species	Habitat	Impact
Purple Loosestrife	Establishes in wetland habitats.	Quickly displaces native wetland vegetation and has the potential to cause a severe impact on wildlife. Roots of the plant can cause obstruction of water flow in ditches in canals.
Saltcedar	Occurs in moist areas, along lakes and waterways. Often associated with cottonwoods. Alkali, saline, and drought tolerant	Displaces native vegetation by releasing salts to inhibit the growth of vegetation.
Diffused Knapweed	Occurs in excessively grazed and disturbed areas.	No known occurrences in the county.
Russian Knapweed	Occurs in poorly drained, saline, or alkaline soils. Establishes is cultivated land, alfalfa fields, pastures, waste sites, and along roadsides and ditches.	Most distributed knapweed and most difficult to control. Inhibits growth in crop plants and other desirable plant species.
Spotted Knapweed	Establishes on roadsides, construction sites, overgrazed land, and waterways. Adapts best in semi-arid areas.	Reduces livestock and wildlife forage and increases surface water runoff, soil erosion, and stream sedimentation.
Canada Thistle	Occurs in stream banks, long ditches, roadsides, cultivated fields, pastures, construction sites, and other disturbed areas.	Displaces desirable plant species and is unpalatable to livestock. Infestations decreases land value for crop production and grazing.
Musk Thistle	Occurs on pastures, rangelands, disturbed sites, grain fields, stream banks, and soils with high sand content.	Corrupt pastures and reduce grazing in the vicinity. Currently inhabits in the northeast corner of ND.
Yellow starthistle	Occurs on pastures, rangelands, grain fields, cultivated land, and roadsides.	Toxic to horses and can cause injury to livestock and wildlife when grazing upon. Reduces cropland yields. No record of occurrence in the county.
Yellow Toadflax	Yellow toadflax occurs in a wide range of habitats but is limited by wet or dark conditions. The plant is often found in well-drained, relatively coarse textured soils.	Often displaces desirable forage plants on rangeland and is generally avoided by cattle.
Information provided by the North Dakota Department of Agriculture		

The pipeline will be installed at a depth that is equivalent to the depth of other pipelines within the Project route and at a depth that exceeds the typical tillage depth. Therefore, the pipeline will not interfere with normal agricultural operations on cropland after construction is complete.

Above-ground facilities that may be located on cropland are limited to pipeline appurtenances such as valves, line markers, and cathodic protection rectifiers. Therefore, minimal long-term loss of farmland use is expected. Construction activities will not significantly affect the factors such as soil quality, growing season, or moisture supply that are considered in determining whether land is prime farmland.

Following construction, agricultural lands will be returned to preconstruction uses to the optimum extent practicable.

Family Farms and Ranches

The construction activity will not alter the patterns of landownership or create long-term disruptions of family farming operations. The construction zone will be within a new ROW, adjacent to an existing ROW. Easement payments will be beneficial to landowners within the route and with schedule permitting. Belle Fourche's crop loss compensation program will compensate landowners if any crop damage were to occur during construction. Crop damage resulting from future pipeline maintenance and repairs will also be amended by Belle Fourche. All maintenance equipment used will be limited to access routes in agreement with the landowners to minimize disruption to soil, drainage, and crops.

Construction activity can create short-term disruption to livestock operations, and inconvenience to farm activities. Possible impacts include removal or damage of fences, gates, and private roads. Belle Fourche will work to minimize construction interference while in operation. Temporary access routes will be made to allow for livestock and farm equipment to mobilize as needed. Temporary fences and gates will be constructed as necessary to prevent livestock from entering into the construction zone, where injury is a potential occurrence. The Project will be conducted in a timely matter and upon completion, fences, gates, and roads will be restored to the landowner's satisfaction.

Lands Suitable for Irrigation

Construction activity will not impact irrigated lands. Land that is most efficient for irrigation is relatively level and has soils that are well drained and highly permeable. The route crosses silt and clay soils which contain low permeability, making them unsuitable for irrigated agriculture. No aboveground irrigation systems have been identified along the route.

Surface Drainage Patterns

Construction of the Project will not alter surface drainage patterns. Streams, swales, ditches, and other natural drains will be restored to preconstruction contours after construction is complete. The pipe will be installed beneath drainage ditches in a manner that will not interfere with flow or future maintenance efforts by landowners or the drainage authority. Mitigation measures will include installation of the pipe at a sufficient depth to avoid being encountered by drain cleaning equipment, or installing concrete slabs above the pipe but below the grade of the ditch.

Groundwater Flow Patterns

Groundwater moves under the influence of gravity from areas of higher potential (recharge) to areas of lower potential (discharge). The rate of ground-water flow is indicated as only a few feet per year in the principal aquifers. Information concerning

groundwater is generally available in or can be estimated from North Dakota county groundwater resource studies. The groundwater flow patterns from aquifer systems in the Project area that contain usable water are summarized as follows:

Within the Project area, the Sentinel Butte-Tongue River aquifer system is the most common water well. Most groundwater uses are intended for public, domestic, livestock and industrial purposes. The closest city to the Project area is Dickinson, ND. The City receives its water supply from the Southwest Water Authority pipeline which is fed by the Missouri River (Lake Sakakawea). The city is not supplied by an aquifer system but retains wells from the Sentinel Butte aquifer system in case of emergency.

In Stark County, the Tongue River, Fox Hills and Hell Creek aquifer system's gradient is south to north at about 19 ft/mi. In Slope County, the Fox Hills aquifer system gradient is southwest to northeast at about 25 ft/mi to 10 ft/mi. In Billings County, the Sentinel Butte, Bullion Butte, Slope, Cannonball and Ludlow aquifer systems have a general movement from south to north with an average hydraulic gradient of 10 ft/mi. Further aquifer details are provided in

B.4.k Water Resources-Groundwater.

Groundwater flow could potentially be altered by pipeline construction through blasting and trenching activities. No exposed bedrock or areas of shallow bedrock will be encountered, therefore blasting is not anticipated. Trenching could temporarily disturb the level of groundwater and increase the sediment in the groundwater. However, given the shallow depth of construction activities and the relatively deep location of the area's aquifers, installation of the proposed pipeline is not expected to have a significant effect on regional groundwater flow patterns.

Groundwater could be affected with the potential for accidental discharges of regulated materials, such as fuel, lubricants, and coolants used during construction. Belle Fourche's Environmental Mitigation Plan (EMP) located in Tab 5 and supporting diagrams in Tab 6 outline precautions to be taken to prevent sedimentation or other materials from entering the water supplies in the area. Project contractors will be expected to have a current oil Spill Prevention Control and Countermeasure (SPCC) plan and implement it fully if the facility contains an aggregate oil storage capacity above 1320 gallons, consistent with US Environmental Protection Agency requirements outlined in 40 CFR 112. Regardless of the total storage capacity, no bulk oil storage facilities will be sited within 100 feet of surface water.

A description of Belle Fourche's pipeline protection and emergency response procedures for pipeline operations and maintenance is provided in section B.9.c.

B.4.b. (2) Impact of Noise Sensitive Land Uses.

There are 2 residences located within 500 feet of the proposed pipeline (see Table 3.2). No other sensitive noise receptors such as schools or hospitals are located in the vicinity of the Project. During construction, residences in close proximity to the construction spread will experience short-term increases in construction-related noise. The heavy construction equipment needed to construct the pipeline will generate short-term

increases in ambient noise levels. Typical bulldozers, backhoes, and side booms used to install large-diameter pipelines generate between 80 to 90 decibels within 50 feet of the equipment. Increases in ambient noise levels due to heavy equipment operation will be limited to the period of construction, typically during daylight hours.

No noise is generated along the ROW during normal operation of the pipeline. No additional pump stations or noise increases at the pump station are proposed as part of the Project in North Dakota.

B.4.b. (3) Impact on Visual Effect on the Adjacent Area.

The only aboveground facilities that will be constructed in North Dakota as part of the Project are pipeline appurtenances such as mainline valves, line markers, and cathodic protection equipment. Mainline valves will be sited at existing aboveground facility sites. Other than these permanent above ground facilities, the Project will result in only short-term visual effects related to construction activities.

B.4.b. (4) Impact on Extractive and Storage Resources.

No extractive or storage resources were identified which would be affected by the Project.

B.4.b. (5) Impact on Water bodies.

Impacts to water bodies were avoided to the extent practicable in a manner compatible with safe operation, maintenance, and inspection of the pipeline. Efforts have been made and will continue to be made to restore all areas of disturbed wetland vegetation. The route contains 23 creek or drainage pathway. Creek crossings by legal description are described in Table 3.4 below. No wetland areas were identified within the proposed pipeline route, as identified in the National wetlands Inventory posted by the US Fish and Wildlife Service at <http://www.fws.gov/nwt>. The majority of water crossings on the route will be horizontally directionally drilled (HDD) to reduce environmental impacts.

Table 3.4 – Project Waterbody Crossings

Name and Distance	Location
Billings County	
Unnamed – 70 ft	S22 T141N R98W NENE
Drainage Pathway – 25 ft	S23 T141N R98W NWSE
Drainage Pathway – 113 ft	S23 T141N R98W SESE
Dunn County	
Unnamed – 25 ft	S31 T141N R97W NWNW
Drainage Pathway – 60 ft	S31 T141N R97W NWNW

Belle Fourche Pipeline Company
Route Application
10-inch Crude Oil Loop Pipeline – Billings, Dunn, and Stark Counties

Name and Distance	Location
Dunn County	
Drainage Pathway – 260 ft	S32 T141N R97W SESW
Drainage Pathway – 260 ft	S32 T141N R97W SESW
Drainage Pathway – 250 ft	S33 T141N R97W SWSW
Stark County	
Drainage Pathway – 300 ft	S1 T140N R98W NENE
Drainage Pathway – 300 ft	S1 T140N R98W SENE
Duck Creek – 450 ft	S7 T140N R97W SWNW
Duck Creek – 70 ft	S7 T140N R97W NWSW
Unnamed – 265 ft	S7 T140N R97W SESE
Drainage Pathway – 160 ft	S17 T140N R97W NESW
Unnamed – 100 ft	S28 T140N R97W SENE
Drainage Pathway – 30 ft	S27 T140N R97W NWSE
Duck Creek – 40 ft	S34 T140N R97W NWNW
Duck Creek – 50 ft	S34 T140N R97W NWNW
Duck Creek – 50 ft	S34 T140N R97W NWNW
Drainage Pathway – 50 ft	S3 T139N R97W NWNW
Drainage Pathway – 20 ft	S3 T139N R97W NWSW
Drainage Pathway – 20 ft	S10 T139N R97W NESE
Drainage Pathway – 20 ft	S11 T139N R97W NESW

Pipeline construction by creeks will be conducted in accordance with applicable regulatory requirements. No creek will be permanently drained or filled as part of the Project, and effects on creeks are expected to be short-term and minor. Belle Fourche will restore the area as close to its previous state and naturally functioning condition as possible.

Unsaturated wetlands may be revegetated with a temporary cover crop if specified by permitting agencies. No fertilizer, lime, or mulch would be applied in wetlands. The long-term operation and maintenance of the pipeline will not have adverse effects on wetland function or value.

B.4.b. (6) Impact on Woodlands and Wooded Areas.

Tree rows and woody areas occur in limited amounts, as isolated islands or rows throughout the Project area. The proposed route crosses through wooded areas on rangeland. Wooded habitat provides shelter and safety for a number of wildlife species. Any trees will be protected to the extent practicable in a manner compatible with safe operation, maintenance, and inspection of the pipeline. Impacts on wooded areas due to construction activity are anticipated to be temporary. It may be necessary to clear some mature trees during construction. However, Belle Fourche will work with the appropriate state agencies to identify efficient restoration measures following construction. Trees containing raptor nests will be avoided.

B.4.b.(7) Impact on Radio and Television Reception, and Other Communication of Electronic Control Facilities.

No impacts on television or radio reception or communication or electronic control facilities are anticipated as a result of the Project.

B.4.b.(8) Impact on Human Health and Human Safety.

Belle Fourche is a liquids pipeline operator that gathers and transports crude oil in the Williston Basin of western North Dakota and the Powder River Basin of Wyoming.

Belle Fourche, Bridger Pipeline, LLC, and Butte Pipeline Company are all part of the True Companies of Casper, Wyoming operating in western North Dakota, eastern Montana and Wyoming. By building and operating this extensive network, Belle Fourche has become one of the largest pipeline companies in North Dakota and experienced in managing construction and operating pipeline systems that protect the public's health and safety.

Causes of and Prevention of Accidents on Pipelines

The major causes of pipeline leaks in the United States are corrosion (both internal and external), excavation damage, pipe and weld failure, incorrect operations, or natural causes (e.g. floods or outside force). To prevent these categories of failures, Belle Fourche will construct and maintain the Project to meet or exceed industry and governmental requirements and standards. Specifically the steel pipe will meet U.S. Department of Transportation Pipeline and Hazardous Material Safety Administration (PHMSA) federal codes under 49 CFR Part 195 (referred to hereafter as PHMSA regulations) and follow standards issued by the American Society of Mechanical Engineers, National Association for Corrosion Engineers and American Petroleum Institute (API). As a safety factor, the Project is designed to withstand pressures over and above its normal operating pressures and will operate according to codes and regulations. All pipe is inspected and integrity-tested at the factory and transported per the highest technical standards. All of the pipe will be manufactured with fusion-bonded epoxy coating to protect against corrosion. The actual installation of the pipeline and all construction and testing records will be subject to regulatory inspection, including by PHMSA inspectors. PHMSA also conducts regularly scheduled field inspections of the

pipeline facilities to ensure compliance with federal regulatory requirements, including the integrity testing of the pipeline through the use of internal inspection devices.

Once installed, the pipeline will be subjected to careful testing to verify its integrity and compliance with specifications. Such testing will include checking coating integrity, examining by X-ray 100% of field welds (over and above the 10% required by regulations), internally inspecting the entire length of each line by using an in-line inspection tool known as a caliper pig, and hydrostatically testing the line to qualify the maximum allowable operating pressure. The pipeline will be placed into service only after inspection to verify compliance with all construction standards and requirements are met.

This new pipeline, as well as the existing pipelines in this same ROW, are maintained and inspected according to PHMSA regulations, industry codes and prudent pipeline operating techniques. All of Belle Fourche's mainline liquids pipelines are externally coated to resist corrosion, internally inspected at regular intervals using in-line inspection technology, and equipped with a cathodic-protection system to prevent external corrosion. Belle Fourche's cathodic protection system and internal inspection program were implemented prior to these techniques becoming a regulatory standard.

The Belle Fourche System ROWs are patrolled and inspected by air at least every three weeks but not less than 26 times per year to watch for abnormal conditions or dangerous activities, e.g., unauthorized excavation, along the routes of the lines. Belle Fourche also conducts extensive public education and outreach programs that exceed industry (API Recommended Practice 1162) and PHMSA (49 CFR 195.440) requirements concerning public awareness of pipelines and pipeline-safety matters. All Belle Fourche lines are marked with signage and warnings, per federal regulations, at road and highway crossings, railroad crossings, navigable rivers, and other locations to alert the public to the presence of underground lines and to provide information, contact numbers, and emergency data.

Pipeline workers and contractors performing critical tasks are qualified under OSHA safety standards and PHMSA "operator qualification" rules and are subjected to federal drug and alcohol testing requirements. Belle Fourche meets, and often exceeds, these requirements so that human error in construction and operation is avoided.

Belle Fourche Ten Year Pipeline Accident Record

Based on a search of the U.S. Coast Guard's National Response Center incident database for the last ten years in North Dakota, there have been 106 reported pipeline incidents, 45 involving crude oil on either gathering systems or transmission pipelines. One of these incidents lists Belle Fourche as the suspected responsible party, representing a 9 barrel spill from a pump stuffing box on a gathering line.³

³ U.S. Coast Guard National Response Center Database, available at www.nrc.uscg.mil/insum.html (accessed January 14, 2014).

B.4.b. (9) Impact on Animal Health and Safety.

Construction activity within the Project area is expected to have temporary impacts on domestic animals and wildlife. The clearing of vegetation will temporarily reduce cover, nesting, and foraging habitat for some species. Small, slower moving species may even be lost during construction. However, species will generally establish into adjacent habitats, away from the disturbance area. Once habitat alterations are reclaimed, it is expected that wildlife habitat will reestablish within the area.

Pipeline trenching activities and associated spoil piles may result in a short-term barrier, restricting the movement of some wildlife species (typically two to four weeks at any one area). Except for short-term interruptions during construction, existing public roads, farm lanes, and livestock crossings will be kept open, providing crossing access.

B.4.b. (10) Impact on Plant Life.

During construction operations, vegetation will be removed within the Project ROW and where extra workspace is needed. Trees and shrubs that are cleared will be reestablished once construction activity is complete. All areas where vegetation will be removed will be reestablished to regulation standards from county agencies and satisfaction of landowners. Permanent impacts on vegetation are not anticipated.

B.4.c Policy Criteria (North Dakota Rules Chapter 69-06-08-02.4)

The ND PSC may give preference to an applicant that will maximize benefits resulting from the adoption of policies and practices of the ND PSC. These policies, and the extent to which the Project aligns with or reinforces these policies, are described below.

B.4.c. (1) Location and Design.

Belle Fourche believes that the Project has been placed in the optimal alignment. Mitigation measures will be implemented to avoid or minimize potential adverse impacts on Avoidance/Exclusion Areas crossed. Further, the alignment is generally on or adjacent to Belle Fourche's pipeline ROW, minimizing the need for new ROW and the environmental and human impacts associated with a new route.

The Project is designed and will be operated in a manner that meets or exceeds state and federal engineering, safety and operational design standards.

B.4.c. (2) Training and Utilization of Available Labor in this State for the General and Specialized Skills Required.

No training of local labor is anticipated as a direct result of this pipeline expansion. During construction of the facility, skilled and unskilled labor, both local and non-local workers will be employed by Belle Fourche or by the General Contractor selected to construct this pipeline.

B.4.c. (3) Economies of Construction and Operation.

The Project is believed to be the most cost-effective and operationally sound means of meeting Belle Fourche's delivery obligations. Refer to section B.2.g of this Application and section C.2 of the Application for Corridor Certificate.

B.4.c. (4) Use of Citizen Coordinating Committees.

No Citizen Coordinating Committee is anticipated as a result of the Project. Belle Fourche believes a Citizen Coordinating Committee is not appropriate for this type of project given that the pipeline will be installed in a ROW adjacent to an existing pipeline ROW.

B.4.c. (5) Commitment of a Portion of the Transmitted Product for Use in this State.

The crude oil transported by the proposed Project will either be delivered to the Dakota Prairie Refining facility or transported via rail at BOE Rail Facility for ultimate delivery to crude markets on the East and West Coast. Dakota Prairie Refinery, when complete, will be the first Greenfield refinery built in the U.S. since 1976. It is a joint project with MDU Resources and Calumet Specialty Products Partners, L.P. to develop, build and operate a 20,000-barrel-per-day diesel topping plant in southwestern North Dakota.⁴

B.4.c. (6) Labor Relations.

The Project will have no anticipated effect on labor relations within North Dakota.

B.4.c. (7) Coordination of Facilities.

Both the existing 6-inch line and proposed new 10-inch line and their associated pumping, control and operating systems will be used in conjunction with each other to optimize system capacity.

B.4.c. (8) Monitoring of Impacts.

Belle Fourche believes that construction-related impacts will be adequately mitigated throughout the Project route by the use of best management practices, good construction techniques, and environmental inspection. Therefore, long-term monitoring of impacts directly related to the Project is not anticipated. Following the installation of the pipeline, a thorough inspection will be performed to ensure restoration efforts have been successful.

B.4.c. (9) Utilization of Existing and Proposed ROWs and Corridors.

The Project will be constructed in recently acquired new ROW located adjacent to the existing Belle Fourche ROW. Generally the new ROW has a width of 75 feet for construction and 50 feet of permanent ROW.

⁴ Calumet Specialty Products Partners, LP, Dakota Prairie Refinery Project, available at <http://www.calumetspecialty.com/dakota-prairie-refinery-project> (accessed December 23, 2013).

All pipe will be transported directly from yards in Williston or Dickinson, so no new pipe storage facilities are necessary. No private access roads have been identified at this time. This information will be filed when available. Belle Fourche will acquire additional workspace from the landowners where necessary; use of unauthorized workspace is prohibited without the landowner and Belle Fourche's approval. In all cases, the size of additional temporary workspace will be kept to the minimum necessary to safely conduct work. Temporary working areas will not be restricted by or subject to permanent easement restrictions upon completion of construction.

B.4.c. (10) Other Existing and Proposed Transmission Facilities.

Belle Fourche is aware of another petroleum transmission system project currently underway in the vicinity, namely Bakken Oil Express, LLC's expansion of capacity within its pipeline by the addition of a 16 inch diameter pipeline from Killdeer, ND to the BOE Rail facility. Bakken Oil Express, LLC's project and Belle Fourche's proposed Project are complimentary to each other. Both pipelines are working to expand the available capacity for crude oil produced in North Dakota to be shipped via rail to east, west and gulf coast crude oil markets.

No specific Transmission Facilities are planned for the next 5 years. Belle Fourche intends to reverse the Bicentennial segment for transportation southbound to Baker, MT in 2014. This modification would involve construction within an existing station only.

No specific Transmission Facilities are planned for the next 10 years. However, given the intense drilling and production activity in our service area of Western North Dakota and the demand for crude oil transportation by pipeline, major new pipeline projects by Belle Fourche are likely.

B.4.d Design and Construction Limitations

See section A.3 of the Application for Corridor Certificate.

B.4.e Economic Considerations

See section B.2.g of this route application and section C of the Application for Corridor Certificate found in Tab 1.

B.4.f Human Environment

The Project area is sparsely populated and farming is the predominant economic activity. The proposed route crosses 47 parcels of land owned by 36 different landowners. The proposed pipeline route does pass within 500 feet of 2 homes or rural residences. Waivers from landowners are in the process of being acquired. The route does not pass through parks or recreational areas.

The majority of the proposed pipeline route is located on private land, and landowner concerns will be addressed during all phases of construction including final restoration. Land agents assigned to the Project will work closely with landowners to the extent

practicable, be responsive to issues that may arise during the course of the Project. Permission from all private land owners has already been obtained.

The pipeline will transect Interstate 94. Belle Fourche was informed of the ND Department of Transportation (DOT)'s intent to construct on- and off-ramps on I-94 near the existing pipeline location. The Project route was modified slightly to avoid any further conflicts with the DOT project. The proposed pipeline route will also cross Highway 10 W and 116th Ave SW, both of which are paved roads. Of the remaining roads, 10 are improved roads (i.e. gravel) and two are two track trails.

All road crossings associated with the Project will be bored. Use of these facilities will not be disrupted as a result of the Project. All roads and section line crossings are subject to review and approval by the County Engineer and County Commission. Applications will be submitted and permits obtained for the road crossings before start of construction. Road crossings for the route are summarized in Table 3.5.

Table 3.5 – Project Road Crossings

Legal Description	Coordinates	Road Name	Description of Road
Billings County			
S16 T141N R98W SENE	47° 01' 56.5" N 103° 05' 46.7" W	123 rd Avenue	Gravel
S23 T141N R98W SESE	47° 00' 34.3" N 103° 03' 15.2" W	28 th Avenue	Gravel
S26 T141N R98W NENE	47° 00' 33.7" N 103° 03' 14.1" W	121 st Avenue	Gravel
Dunn County			
S32 T141N R97W SESE	46° 58' 58.1" N 102° 59' 31.1" W	121 st Avenue SW/ S Heart Rd	Gravel
S33 T141N R97W SESW	46° 58' 50.3" N 102° 58' 60.0" W	30 th Street SW	Gravel
Stark County			
S1 T140N R98W SESE	46° 57' 47.9" N 102° 59' 0.1" W	31 st Street SW	Gravel
S7 T140N R97W SESE	46° 56' 55.7" N 102° 57' 27.7" W	32 nd Street SW	Gravel
S7 T140N R97W SESE	46° 56' 55.7" N 102° 57' 27.7" W	119 th Avenue SW	Gravel
S17 T140N R97W SWSE	46° 56' 3.5" N 102° 56' 40.9" W	33 rd Street SW	Two Track Trail
S21 T140N R97W SWNW	46° 55' 37.9" N 102° 56' 11.4" W	118 th Ave SW	Two Track Trail
S21 T140N R97W SESW	46° 55' 10.9" N 102° 55' 38.0" W	34 th Street SW	Gravel
S27 T140N R97W SWSW	46° 54' 18.7" N 102° 54' 52.3" W	35 th Street SW	Gravel
S34 T140N R97W SWSW	46° 53' 26.4" N 102° 54' 37.8" W	Interstate-94	Paved
S3 T139N R97W SWSW	46° 52' 34.5" N 102° 54' 37.8" W	Highway 10 W	Paved
S10 T139N R97W NESE	46° 52' 7.6" N 102° 53' 39.3" W	116 th Avenue SW	Paved

B.4.g Terrain and Geology

The pipeline route in Stark, Dunn, and Billings Counties is in the glaciated Missouri Plateau section of the Great Plains Physiographic Province in western North Dakota. The Missouri Plateau is characterized by low relief and gentle slopes interrupted by buttes and ridges. In the glaciated section the drift is generally thin except for valley fill so the topography reflects the pre-glacial topography.

The pipeline route is located entirely in the Williston Basin; a large elliptical depression bounded by the Canadian Shield (northeast), Alberta Shelf (northwest), Black Hills (southeast), and Wisconsin Dome (southwest). The Williston Basin covers about 300,000 square miles. The Williston Basin is a structurally simple basin, deepest at its center (16,000 ft below the surface near Williston, ND) becoming shallower and thinner towards its edges.

The pipeline route primarily traverses bedrock geology consisting of silt sand, clay, sandstone, and lignite of the Sentinel Butte Formation, a member of the Tertiary Fort Union Group. Surface elevations along the route range from approximately 2450 feet to 2650 feet.

B.4.h Soils

Detailed soil characteristics along the pipeline route were identified and assessed using the Soil Survey Geographic database (SSURGO). The SSURGO database is a digital version of the original county soil surveys developed by the NRCS for use with geographic information systems (GIS). It provides the most detailed level of soils information for natural resource planning and management. The mapping scale in the Project area is 1:20,000, with a minimum delineation size of 4.0 acres. SSURGO is linked to an attribute database that gives the proportionate extent of the component soils and their properties for each map unit. The SSURGO database was used to define soil characteristics along the pipeline route in Stark, Dunn, and Billings Counties. SSURGO attribute data consist of physical properties, chemical properties, and interpretive groupings. Attribute data apply to the whole soil (e.g., listed hydric, prime farmland soils, slope class) as well as to layer data for soil horizons (e.g., texture, permeability). The soil attribute data can be used in conjunction with spatial data to describe the soils in a particular area.

The entire Project area is classified as moderate susceptibility to landsliding and low incidence. The USGS classifies low incidence as an area where less than 1.5% of the area is anticipated to be impacted by landslide. Low incidence is the classification with the smallest potential impact. Based on the USGS classification and the predominately low sloping land, as the majority of the Project area is less than 6% slope, landsliding is not anticipated.

The Project area lies within the Glaciated Missouri Plateau Section of the Great Plains physiographic Province. The soils in the Project area range from having course sandy loams to fine silty loams; while encompassing other various silt and clay loams.

Potential temporary effects on soil resources include the loss of soil productivity due to erosion, soil mixing, or soil compaction. Soil disturbances associated with clearing, grading and trenching expose soils to water and wind, increasing the potential for erosion. Soil erosion by water is also common along the pipeline route. During construction, the effects of erosion by water on steep slopes will be mitigated by use of silt fence and other erosion control measures as described in the Environmental Mitigation Plan (see Tab 5).

Wind erosion may be a hazard on soils in the Project area. It is severe on the coarse textured and moderately coarse textured soils. They are susceptible to wind erosion in the spring if they have been bare throughout the winter. Because of freezing and thawing, soil structure can break down, resulting in aggregates that are susceptible to movement. This can also cause fine textured soils which have a severe wind erosion hazard. The southern half of the Project area where fine sandy loams and loamy fine sands are predominant is more susceptible to wind erosion. Nearly all soils can be damaged by wind erosion if they are not protected by residue. However, following the Environmental Mitigation Plan (Tab 5) and re-vegetating the area will help to minimize wind erosion.

Water erosion is a hazard on gently rolling and steeper soils. The hazard is greatest when the surface is bare therefore the precautions outlined in the Environmental Mitigation Plan found in Tab 5 will be implemented to minimize impacts. However due to the relatively flat terrain and gentle slopes of the Project area, this impact is anticipated to be minimal.

Soil productivity could potentially be affected if topsoil were to become mixed with subsoil during construction. To minimize this potential in agricultural land and other areas where soil productivity is an important concern, topsoil will be segregated during trench excavation. In cropland, topsoil will be removed to a maximum depth of 12 inches from the trench and soil storage area unless otherwise requested by the landowner. Topsoil will be stored separately from the trench spoil and will be returned to its approximate original location after the trench is backfilled.

Project construction will cause temporary removal of vegetation and result in temporary exposure of soil. These actions may result in some minor temporary erosion. Re-vegetation of disturbed areas, with native species, will mitigate these concerns.

Heavy equipment used to construct the pipeline may cause soil compaction along the ROW. Soils may be tilled with a chisel plow or other deep-tillage equipment to loosen the soil to the reasonable satisfaction of the landowner. Because the soils of the Project area generally have a high shrink-swell potential, compaction will correct itself over time as the soil goes through wet-dry and freeze-thaw cycles.

B.4.i Vegetation and Wildlife

Investigations were conducted on potential impacts the Project could inflict upon wildlife and plant species. Information was gathered from a variety of sources to compile the existing conditions of plant and wildlife within the proposed route. These sources included field surveys, literature, and personal communications with the NDGF, the

FWS, and the ND Parks and Recreational Department (The ND National Heritage Inventory). Field surveys were conducted on foot and via ATV. Field data was collected with a Trimble GEOXH 6000 GPS and photographs were taken along the entire length of the proposed route. If species locations were unknown or state-wide, literature, personal communications, and knowledge of species and species habitat were used to make a justified determination on the potential effects that may occur from the Project.

Vegetation

Botany surveys were performed along the 20 mile proposed pipeline route in Billings, Dunn, and Stark County, during September 2012 and November of 2013. Two surveyors conducted a thorough inspection of private land (starting north and proceeding south along the route), which consisted of cropland, rangeland, and pastureland.

The Project route crosses predominantly agricultural land, which is discussed in detail in sections B.4.b (1) and B.4.j. Crested Wheatgrass and Smooth brome were primarily found in abundance throughout the majority of the route. Other grasses that were commonly identified were: Blue Grama, Side Oats Grama, Little Bluestem, Prairie Junegrass, Indianwheat, and Needle and Thread grass. Other vegetation often found established in the Project area include Alfalfa, White Aster, Cudweed Sagewort, Fringed Sagewort, Curlycup Gumweed, Blazing Star, Lochia, Goldenrod, Prairie Clover, Prairie Cone Flower, Prairie Rose, Prickly Pear Cactus, Rubber Rabbitbrush, Silver leaf Surfpea, Skeletonweed, Wild Licorice, Wild Sunflower, Yarrow, Buffaloberry, Chokecherry, Cottonwood, and Western Snowberry.

Noxious weeds that were identified on the survey were Field Bindweed, Absinth Wormwood, and Canada Thistle. Field bindweed occurrences were primarily along access roads, and well sites. Canada thistle and Absinth Wormwood were found in small populations spread throughout rangeland and pastures.

The proposed pipeline will run adjacent to shelterbelts at certain points along the route. Due to the distance from the construction corridor, potential impacts are unlikely to occur. However, Belle Fourche will restore any tree row to the land owner's agreement, in the event the Project would disturb it during construction operation.

There were no sensitive, threatened, or endangered plant species detected in the survey corridor. A list of current ND Sensitive Botany Species is attached in Appendix Tab 4.D - ND Plant SOC. In areas that require revegetation, Belle Fourche will specify appropriate seed mixes, application rates, and seeding dates, taking into account the recommendations of appropriate state and federal agencies.

The primary impact is expected to be the removal of vegetation in the ROW during construction activity. Additional vegetation may be removed in areas where extra workspace is required, such as a road or waterbody crossings. Spread of noxious weeds that are currently established along the route is addressed in section 1.13 of Tab 5, Environmental Mitigation Plan for the Project.

Wildlife

Common terrestrial wildlife identified in the Project area include coyote, ground squirrel, mole, Ring-necked Pheasant, Sharp-tailed Grouse, Hungarian Partridge, various songbirds, migratory waterfowl, raptors, and deer.

Raptors

An aerial raptor survey was conducted in the winter of 2014 along with two separate ground raptor surveys in the fall of 2013 and summer 2012 to locate any raptors as well as suitable nests. The survey methods for the 2014 survey followed the USFWS technical guidance on inventory and monitoring protocols. Three surveyors (seated in rear-left, rear-right and front-left positions of the helicopter) thoroughly examined the area within the 2-mile-wide survey corridor along the ROW to locate currently active or inactive raptor nests. Complete coverage of the ROW was obtained by traversing the ROW centerline in a perpendicular manner while visually scanning all areas of potential nesting habitat, to provide complete coverage of the 2-mile corridor. A second pass was conducted in a similar manner in the opposite direction to get full field of view and line of sight in all possible raptor nest locations. When a possible nest was discovered, the helicopter would slow to a hover, at a distance great enough to prevent flushing and in the shortest amount of time needed to determine the condition, type of nest, contents, and obtain accurate GPS location coordinates. Cliffs and rocky outcrop areas were identified along the Project route that may be suitable future nesting sites for golden eagles (*Aquila chrysaetos*) and ferruginous hawks (*Buteo regalis*), among other cliff nesting species. Nesting habitat along the survey corridor included: shelterbelts, cliff edges, deciduous forests and riparian areas. Late winter timing of the survey facilitated locating nests in deciduous trees before “leaf out” occurred. Heavily wooded areas are within the survey area and multiple passes were taken when necessary. Only nests large enough to support raptors were recorded during the survey.

The North Dakota raptor species of concern detailed by the North Dakota Natural Heritage Inventory System (NHI) with potential to be located in Stark, Billings, and Dunn Counties include the following: bald eagle (*Haliaeetus leucocephalus*), golden eagle (*Aquila chrysaetos*), Swainson’s hawk (*Buteo swainsoni*), merlin (*Falco columbarius*), prairie falcon (*Falco mexicanus*), turkey vulture (*Cathartes aura*), American peregrine falcon (*Falco peregrinus anatum*), and the burrowing owl (*Athene cunicularia*).

The following state-listed Species of Conservation Priority, USFS Sensitive, and BLM Sensitive species were identified in the study corridor during the survey conducted in the winter of 2014 and summer of 2012: Golden Eagle (*Aquila chrysaetos*), and Swainson’s Hawk (*Buteo swainsoni*).

Even though raptors of concern were spotted during the survey, due to the range of these raptors it is not uncommon for one to be seen at a distance greater than one mile from their nests, making it quite probable that the raptor species of concern seen during the survey were in fact nesting outside the corridor. Nesting behavior was not observed anywhere inside the survey corridor.

A total of eleven raptor nests were observed during the surveys, with a total of zero nests occupied. While it is impossible to say with certainty that eagles will not occupy the recorded empty nests, based on the size of the discovered unoccupied nests along with the timing of year the survey was conducted, it would be improbable to find future nesting raptors in these unoccupied nests. All trees containing empty nests will be avoided during construction. Findings are reported on the appropriate plate in Appendix 4.B in Tab 4, as well as electronically presented as ESRI ArcGIS software compatible data files in Tab 7.

Prairie Dogs

One prairie-dog town was located while conducting the wildlife survey, and is located nearly a mile from the construction corridor. Prairie dog towns support a large community of wildlife species and are prone to disruption by construction projects. The black-footed ferret also inhabits prairie dog colonies. Although there have been no records of this species in the state for many decades, disruptions of prairie dog colonies should be avoided to prevent any impact on habitat or potential occurrences. The proposed route does not invade any prairie dog towns and there should be no effect to this species or its habitat. Measures will be taken to avoid all prairie dog towns during construction.

Agency Review

Contact has been made with the NDGFD, USFWS, and the North Dakota National Heritage Inventory System to identify known occurrences of state and federally listed threatened or endangered species and critical habitat located along the proposed route. Analysis is currently being undertaken by all departments. A complete list of ND sensitive wildlife species is located in Appendix Tab 4.D – ND Wildlife SOC.

The National Heritage Inventory data was reviewed for species of concern and significant ecological communities that exist in the Project area. The information below was provided by the North Dakota Parks & Recreation Department, Bismarck office, for the North portion of the line. Further review is ongoing.

The species and habitat listed above are out of the Project corridor and will not be impacted by disturbances that construction activity could create.

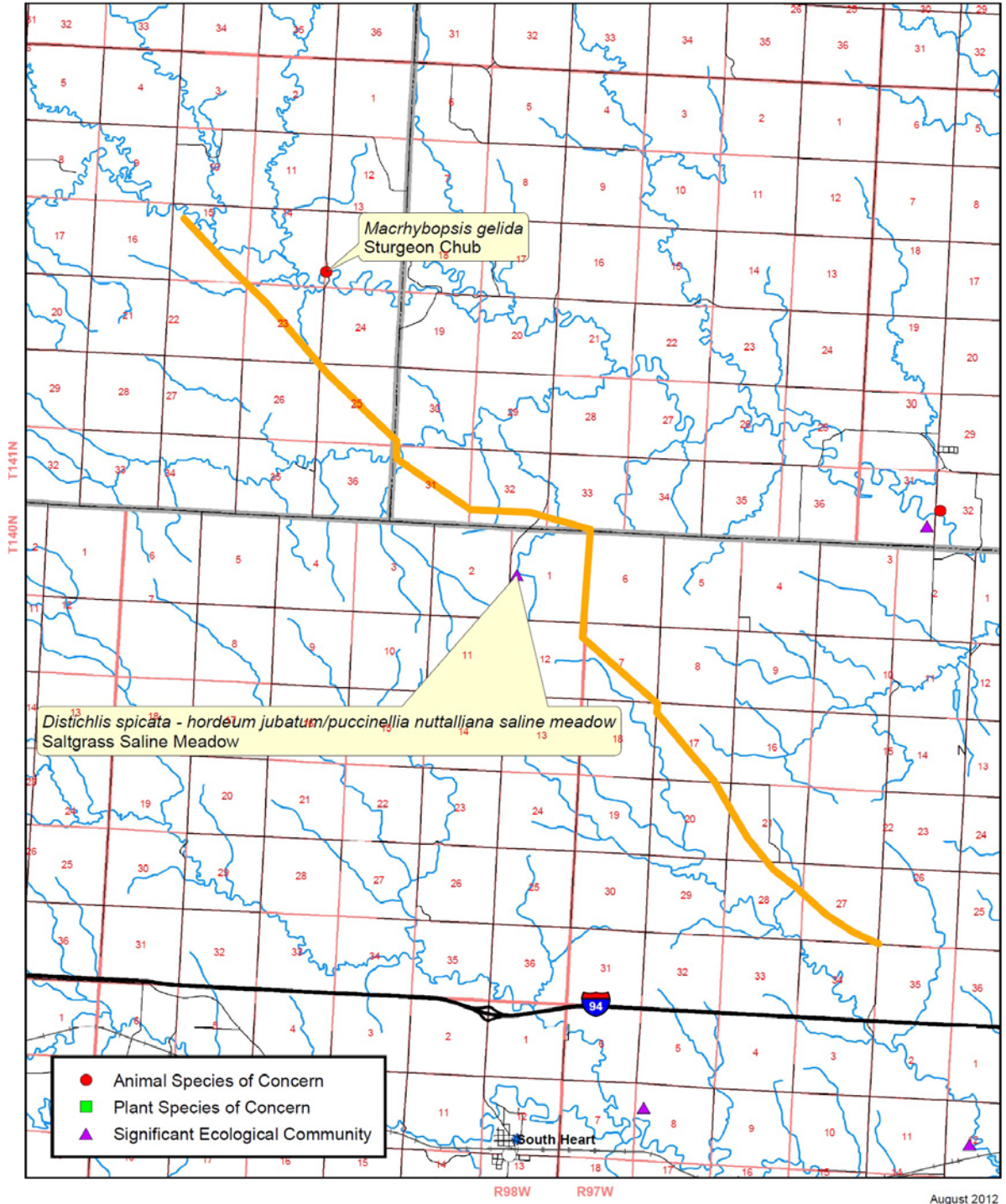
Impacts from the Project and human activity during construction will create no significant effects to the ND Sensitive Species of ND. The proposed construction activity is

scheduled to begin in May of 2014 and runs primarily along land that has been previously disturbed and reclaimed due to agriculture, livestock and wildlife grazing, access roads, and oil and gas activity. The Project may impact habitat. However, it is unlikely that the effect will be significant enough to alter a species population due it already occurring where there's been similar activity.

Agency review is still taking place for the DOT Re-route portion of the line. A full list of survey data for all species can be found in Tab 7.

Figure 3.2

North Dakota Parks and Recreation Department
North Dakota Natural Heritage Inventory



B.4.j Land Use

Agricultural production is the predominant land use along the Project route. The primary crops cultivated in the area include wheat, grain, corn, and alfalfa. The Project will have only a temporary effect on agricultural land use. Crop production will be temporarily disrupted in cases where the construction period overlaps with the growing season. Landowners will be compensated for crop loss or reduced yields caused by construction of the pipeline. Deep tillage or other measures will be implemented as necessary to mitigate effects of soil compaction.

The Project is not located within any city limits or urban areas. The only industrial area crossed by the pipeline route is at both ends of the pipeline loop where the line connects into existing pipeline junctions or pipeline terminal. Construction and operation of the pipelines will preclude future unrelated industrial development on lands occupied by the permanent maintained ROW; however, as previously noted, the Project will be located on or adjacent to existing ROW; therefore, impacts to land use are anticipated to be minimal. Furthermore, after installation of the pipeline, disturbed areas will be restored to preconstruction conditions to the extent practicable, and will generally revert to preconstruction uses. No long-term change in land use is anticipated.

B.4.k Water Resources-Ground Water

Within the Stark, Dunn and Billings counties groundwater uses are intended for public, domestic, livestock and industrial purposes. Most all groundwater is derived from precipitation. Excess water infiltrates down until it reaches the zone of saturation, at which time it becomes accessible to wells. Most aquifers occur in the Fox Hills and Hell Creek Formations and in the Cannonball, Ludlow, Tongue River, and Sentinel Butte Formations. Maximum potential yields of these aquifers range from around 50 gal/min to as much as 300 gal/min. The water from these aquifers are commonly soft to very hard and contain sodium bicarbonate.

The closest city to the Project area is Dickinson, ND. The City receives its water supply from the Southwest Water Authority pipeline which is fed by Lake Sakakawea. The city is not supplied by an aquifer system but retains wells from the Sentinel Butte aquifer system in case of emergency.

No sub-surface injection of water is expected for this Project. Any released water will be discharged to surface water, and subject to the requirements of the general NPDES permit issued by the ND Department of Health – Environmental Section.

This Project is not expected to impact North Dakota ground water quality.

Water Resources-Surface Waters

Topographic maps and current aerial photos were reviewed to identify streams, rivers, and lakes crossed by the pipeline route.

No lakes or ponds were identified in the route of the proposed pipeline.

The route contains 23 creek or drainage pathway crossings. Creek crossings are described in Table 3.4 in section B.4.b. (5).

Pipeline construction by creeks will be conducted in accordance with applicable regulatory requirements. No creek will be permanently drained or filled as part of the Project, and effects on creeks are expected to be short-term and minor. Belle Fourche will restore the area as close to its previous state and naturally functioning condition as possible.

The pipeline route also crosses several drainage ditches and draws which channel water to the listed waterbodies; however the slope of these areas prevent the accumulation of water and the establishment of hydroponic plants. The proposed pipeline route does not cross any lakes or ponds. No state or federally designated wild or scenic rivers are crossed by the route. Waterbodies crossed by the Project are listed in Table 3.4.

Appropriate erosion control measures will be used during installation to reduce sediment transport into waterbodies and wetlands. Implementation of the measures described in Belle Fourche's EMP will provide adequate protection to water resources during construction.

Waterbody crossings are planned to be constructed using either horizontal directional drill (HDD) or open-cut construction techniques, with most waterbodies crossed by the HDD method. In a wet trench crossing, backhoes excavate a trench in the waterbody channel, leaving "hard plugs" of soil in place on each bank of the crossing. When the trench has been excavated and the crossing section fabricated, the hard plugs are removed and the pipe segment is moved into place. The newly installed pipeline is welded in place and the trench is backfilled with native materials or as required by applicable permits.

Construction across waterbodies will require authorization by the U.S. Army Corps of Engineers (ACE). Belle Fourche will be obtaining necessary authorization for water crossings in wetlands and construction will be conducted in accordance with applicable permit conditions.

Temporary, incremental increases in sediment load can be expected downstream of open-cut waterbody crossings during the excavation and backfilling phases of construction. Additionally, some incremental increase in surface run-off sedimentation may be expected to occur at each of the crossings due to the close proximity of exposed soils. No significant or long-term increase in sedimentation is expected from construction of the waterbody crossings.

Wetlands

Belle Fourche made arrangements to conduct field wetland delineations to identify wetlands crossed by the pipeline route. This wetland delineation, in conjunction with aerial photo-based alignment sheets and USGS topographic maps and US Corps of Engineers waters of concern within North Dakota, were used to identify wetlands along the pipeline route.

Impact on Wetlands

Construction in wetlands will require authorization by the U.S. Army Corps of Engineers (ACE). Belle Fourche will be obtaining necessary authorization for wetland crossings and work in wetlands will be conducted in accordance with applicable permit conditions. For water and wetland crossings which are not bored, construction in unsaturated wetlands, topsoil will be segregated from the trench line to preserve natural sources of seed and rootstock. During trenching, water quality of inundated wetlands will be temporarily affected due to the suspension of sediments and organic matter. After the trench is backfilled, the topsoil will be replaced to facilitate the natural re-vegetation process. The long-term operation and maintenance of the pipeline will not have adverse effects on wetland function or value.

Construction of the Project will not result in the permanent drainage or filling of wetlands. Belle Fourche will implement the measures identified in its EMP to minimize adverse effects on wetlands during construction and restore wetlands following construction. Effects on wetlands are therefore expected to be short-term and minor.

Water Use

The Project will not significantly affect water use patterns. Following construction, drains, swales, and flowages will be restored to preconstruction conditions to the extent practicable to minimize disruption of water resources.

The Project will require temporary appropriations of water (likely surface water) for use in the hydrostatic testing of the newly installed pipeline. Additionally, some temporary trench dewatering will be required, particularly during road bores. No significant effect on existing and future water uses is anticipated.

Discharge of water used to hydrostatically test the new pipeline is not expected to have an impact on the environment or receiving waters. The discharge is regulated by the North Dakota Department of Health under a North Dakota Pollutant Discharge Elimination System (NDPDES) general permit issued specifically for temporary dewatering activities including hydrostatic testing and trench dewatering (Permit No. NDG-070000).

Surface Water Runoff

Potential construction-related effects on surface waters are primarily related to sedimentation from uncontrolled erosion of disturbed areas. Much of the pipeline route is level or only gently sloping, which limits the potential for runoff effects. Because the ROW will be restored to preconstruction conditions, area runoff following construction will generally reflect surrounding land use.

Belle Fourche will obtain authorization under a general permit for Storm Water Discharges Associated with Construction Activity from the North Dakota Department of Health, which implements a federal program under the Clean Water Act. Belle Fourche's EMP, which was developed in part to meet requirements of this permit, describes best management practices Belle Fourche, its General Contractor and Project subcontractors

will implement to minimize off-site erosion from site storm water runoff. These practices will protect surface water and soil resources within the Project area. Belle Fourche's EMP will be included in the construction specifications for the Project and enforced by one or more environmental inspectors during construction.

Discharges to Surface Waters

During construction, point source wastewater discharge will be generated from hydrostatically testing the new pipeline prior to placing it in service. Discharges will also occur as needed for trench dewatering during construction. The North Dakota Department of Public Health has developed a General Permit (Permit No. NDG-070000) which authorizes the discharge of waters related to temporary dewatering and hydrostatic testing. Belle Fourche will obtain authorization for construction-related discharges and will conduct trench dewatering and hydrotest water discharges in a manner consistent with the NPDES General Permit.

Testing and discharge is anticipated to be consistent with past practices and experience. Discharges of hydrostatic test water typically are controlled discharges directly to the ground surface or occasionally into Waters of the State. Specific discharge point(s) for hydrostatic test water for the pipeline have not been determined at this time. In most cases, it is anticipated that this water will be acquired from several of the rivers crossed by the pipeline route and discharged back to the original source. The NPDES permit specifies that discharge water must be free from process and other wastewater discharge.

Protection from Fuel Spills

Construction equipment should be expected to be self-propelled and/or motorized and are expected to be powered by gasoline or diesel fueled engines. Fuel for construction vehicles will be used and stored consistent with regulations of the US Environmental Protection in 49 CFR 112 for areas with at least 1320 gallons of aggregate storage capacity and/or consistent with the National Fire Protection Association Code 395 for storage and handling of petroleum-based fuels in isolated and/or remote areas. If more than 1320 gallons of oil storage occurs at one area, the contractor will be required to prepare and implement an oil spill prevention, control and countermeasure (SPCC) plan in accordance with 49 CFR 112 including having the plan reviewed and certified as adequate by a registered professional engineer licensed by the State of North Dakota. A SPCC Plan outlines required secondary containment measures to be installed around bulk storage containers (i.e. tanks and drums) as well as other oil-handling areas such as unloading and dispensing areas. The Plan also describes response, containment, and cleanup measures. Training requirements of impacted employees are also outlined.

Contractors will be required to provide trained personnel, appropriate equipment and materials to contain and clean up spills of fuel, lubricating oil or hydraulic fluid that result from equipment failure when working in or near wetlands or surface water bodies.

Storage of bulk fuels will not be allowed within 100 feet of an open waterway.

B.4.I Cultural Resources

Metcalf Archaeological Consultants, Inc. of Bismarck, North Dakota was engaged to review existing site file data maintained by the State Historical Society of North Dakota (SHSND), State Historic Preservation Office (SHPO) to determine if any portion of the pipeline route was surveyed previously for cultural resources. Topographic maps and aerial photography were reviewed to determine the amount of pedestrian survey as advised by the NDSHPO State Archaeologist. Unplowed regions, landforms such as prominent hills, terraces, and any other water related landform were surveyed. After determining the areas for inventory, the proposed corridor was inventoried by walking parallel pedestrian transects 20 meters apart across the Area of Potential Effect (APE).

Six cultural resources were recorded: historic dumps 32BI1116 and 32SK1070, historic cultural material scatter 32DU1789, and prehistoric isolated finds 32BIx919, 32BIx920, and 32SKx363. Metcalf Archaeological Consultants, Inc. considers that none of the cultural resources satisfy any of the criteria necessary to be eligible for the National Register of Historic Places and no further work is necessary. Metcalf Archaeological Consultants, Inc. recommends a determination of *No Historic Properties Affected* (36CFR800.4[d][1]) for the undertaking as inventoried, mapped, and documented herein.

After the initial inventory in September 2012, it became necessary to reroute approximately 4.6 miles of the Project corridor near the south end. Metcalf Archaeological Consultants, Inc. was engaged to conduct a Class III cultural resource inventory on the reroute. No cultural resources were encountered during this addendum inventory. A finding of *No Historic Properties Affected* is recommended for this undertaking as surveyed, mapped, and documented herein.

A copy of Metcalf Archaeological Consultants, Inc. report and addendum is presented as Tab 4 Attachment A.

B.5. THE CRITERIA TO BE EVALUATED SHALL INCLUDE AT A MINIMUM ALL OF THE FOLLOWING, WHICH ARE WITHIN THE DESIGNATED CORRIDOR:

- Exclusion Areas;
- Avoidance Areas;
- Selection criteria;
- Policy criteria;
- Design and construction limitations; and
- Economic considerations

Complete descriptions, potential impacts, and mitigation measures relevant to the six criteria cited above are provided in section B.4 in conjunction with the descriptions of potential impacts. Below is a discussion of additional measures Belle Fourche will employ.

B.6. MITIGATION MEASURES

B.6.a Measures to Preserve the Human Environment

Belle Fourche will require its construction contractor to clean up on a daily basis personal litter, bottles and paper deposited by ROW preparation and construction crews. Waste and scrap that is the product of pipeline construction will be removed and properly disposed of in accordance with applicable regulations before construction is completed.

To the maximum extent practicable, Belle Fourche will minimize noise and dust resulting from construction near residential areas.

Belle Fourche will obtain applicable permits prior to conducting road crossings from the county where applicable. Permission will also be obtained from all owners of private roads. Temporary signs will be posted at each crossing as appropriate to alert motorists of construction activity. Paved roads will be bored which will minimize interference with traffic flow caused by construction activities, and as required by state and county regulations.

B.6.b Measures to Protect Terrain and Geological Resources

Belle Fourche will, to the maximum extent practicable, restore the area affected by pipeline construction to the natural conditions that existed immediately before construction of the pipeline. Restoration will be compatible with the safe operation, maintenance, and inspection of the pipeline.

To the maximum extent practicable, Belle Fourche will restore the construction area to pre-construction contours. Measures such as slope breakers, erosion control blankets and re-vegetation will be employed to maintain the stability of slopes along the ROW. No crown of backfill material will be left over the trench in wetlands.

Fuel and all other hazardous materials will be stored in accordance with the requirements Contractor's oil SPCC Plan, if applicable. A SPCC Plan describes response, containment, and cleanup measures. However, even for small quantities of oil-based liquids, containers and fueled equipment will not be stored within 100 feet of surface water.

B.6.c Measures to Protect Soils

Belle Fourche will implement temporary and permanent erosion control measures as specified in the EMP (Tab 5 and Tab 6). The EMP will be included in contract documents and enforced as such throughout the Project.

Temporary erosion and sedimentation control measures may include installation of silt fence, straw bales, slope breakers, trench breakers, erosion control fabric and mulch.

To minimize potential impacts on soil productivity, topsoil will be segregated during trench excavation in agricultural land, unsaturated wetlands, and if applicable, other

areas where soil productivity is an important consideration. Unless otherwise requested by the landowner, topsoil in cropland will be removed to a maximum depth of 12 inches from the trench and spoil storage area and stored separately from the trench spoil. After the trench is backfilled, topsoil will be returned to its approximate original location. Compaction of agricultural soils will be minimized by restricting construction activities during periods of prolonged rainfall. Where unacceptable levels of compaction occur in agricultural lands, deep tillage, a chisel plow or other deep tillage equipment will be utilized to loosen the soil to the reasonable satisfaction of the landowner.

Belle Fourche will retain environmental inspectors to monitor the contractor's compliance with applicable requirements to protect soil resources during construction of the Project.

B.6.d Measures to Protect Vegetation and Wildlife

Belle Fourche will clear the ROW to the extent necessary to assure suitable access for construction, safe operation, and maintenance of the pipeline.

Belle Fourche and its contractors will effectively control or limit the spread of invasive plant species through control treatments and avoiding existing populations where possible. Treatments will be initiated prior to pipeline construction to lessen the potential for this activity to disperse propagules along the freshly disturbed route. Monitoring and treatment should then be conducted on an annual basis to ensure a high degree of control and maximize treatment effectiveness.

In areas that require permanent revegetation, Belle Fourche will specify appropriate seed mixes, application rates, and seeding dates, taking into account recommendations of appropriate state and federal agencies and landowner requests. In non-agricultural areas, vegetation cleared from extra workspace will be allowed to revegetate after construction depending on arrangements with the landowner. Consequently, significant changes in cover types are not anticipated.

After completion of waterbody crossings, Belle Fourche will revegetate disturbed stream banks in accordance with the EMP and requirements of applicable state or federal permits. During construction in unsaturated wetlands, topsoil will be segregated from the trench line to preserve natural sources of seed and rootstock. After the trench is backfilled, the topsoil will be replaced to facilitate the natural re-vegetation process.

Belle Fourche will take appropriate precautions to protect livestock and crops affected by construction. Operation of the pipeline is not anticipated to significantly affect terrestrial wildlife, fisheries resources, or other aquatic species. Shelter belts and trees will be protected and restored by Belle Fourche to the extent practicable in a manner compatible with the safe operation, maintenance, and inspection of the pipeline.

B.6.e Measures to Protect Land Use Permits

Belle Fourche will obtain and comply with applicable county permits regulating zoning and land use. These permits are limited road and utility permits. Belle Fourche will retain

one or more environmental inspectors to monitor compliance with environmental conditions of county permits.

Belle Fourche will repair surface drains disturbed during ROW preparation, construction and maintenance activities. Belle Fourche will repair private roads and farm lanes damaged when moving equipment or when obtaining access to the ROW. Belle Fourche will repair or replace fences and gates removed or damaged as a result of ROW preparation, construction or maintenance activities.

The Project will be installed at a minimum depth of 36 inches from the surface contour to minimize the potential for environmental damage resulting from deep tillage activities unless modified to accommodate special construction issues at the site.

Shelter belts and trees will be protected by Belle Fourche to the extent possible in a manner compatible with the safe operation, maintenance, and inspection of the pipeline.

B.6.f Measures to Protect Water Resources

Belle Fourche will obtain applicable permits for crossing wetlands and waterbodies and for water appropriations related to hydrostatic testing and trench dewatering. Environmental inspectors will monitor compliance with applicable waterbody and wetland protection requirements during construction of the facilities.

Measures to protect water resources have been discussed to some extent in section B.4.k and in previous mitigation sections on soils (see section B.6.c) and vegetation and wildlife (see section B.6.d). Belle Fourche's EMP describes these measures in detail, and contains illustrations of how sediment control devices are typically installed at waterbody crossings. Additionally, Belle Fourche will maintain a 10-foot-wide vegetative buffer until the actual crossing of the waterbody takes place. Temporary sediment control measures such as silt fence installed at each crossing will minimize the introduction of sediment into waterbodies during construction and minimize the movement of spoil and sediment from surface runoff during and after construction. Permanent erosion control measures, such as vegetation and installation of slope breakers, will effectively stabilize riparian zones. Belle Fourche will stabilize stream banks disturbed during construction using methods as directed by applicable state and/or federal permits.

For open-cut crossings, "hard plugs" of soil prevent the flow of water from the waterbody into the adjacent trench and the migration of sediment from the adjacent trench into the waterbody. After the pipe is installed, the trench will be backfilled in such a manner to restore the natural contours of the waterbody to the extent practicable. Directional drilling of the rivers and creeks will minimize construction-related disturbance of this river because in-stream trenching and backfilling will not be necessary.

Wetland crossings will be conducted in accordance with applicable regulatory requirements. If construction mats or timbers are placed in wetlands to support equipment, they will be removed after construction is completed. In order to maintain surface water hydrology within wetlands, preconstruction contours will be restored and no crown will be left over the trench. If there is a potential for a wetland to be drained by

trenching, trench plugs will be installed as needed at the edge of a wetland. In unsaturated wetlands, topsoil will be replaced to facilitate the natural revegetation process.

Belle Fourche's Environmental Mitigation Plan (EMP) specify several measures to protect wetlands and waterbodies from pollution during construction by fuels or other hazardous materials. The EMP also specifies that equipment must be refueled at least 100 feet from waterbodies. If due to site-specific conditions there is no practical alternative, the contractor must implement site-specific protective measures and containment procedures described in the contractor's SPCC Plan. Contractors will be required to provide trained personnel, appropriate equipment and materials to contain and clean up spills of fuel, lubricating oil or hydraulic fluid that result from equipment failure when working in or near wetlands or surface water bodies.

Water appropriations for hydrostatic testing will be conducted in accordance with applicable permits. Belle Fourche will conduct trench dewatering and hydrostatic test discharges in a manner consistent with the NDPDES General Permit. Belle Fourche's EMP describes best management practices that will be implemented to minimize off-site erosion from surface water runoff, and protect water and soil resources within the Project area.

Much of the concerns associated with the quality of the water being discharged are addressed by the fact that no additives to the water are permitted unless written approval is received from Belle Fourche and applicable permits authorize such additives. Environmental Inspectors will monitor compliance with permits. Where appropriate, water will be discharged into an energy dissipation and/or filtering device to remove sediment and to reduce the erosive energy of the discharge.

B.6.g Measures to Protect Cultural Resources

Metcalf Archaeological Consultants, Inc. of Bismarck, North Dakota was engaged to review existing site file data maintained by the State Historical Society of North Dakota (SHSND), State Historic Preservation Office (SHPO) to determine if any portion of the pipeline route was surveyed previously for cultural resources. Topographic maps and aerial photography were reviewed to determine the amount of pedestrian survey as advised by the NDSHPO State Archaeologist. Unplowed regions, landforms such as prominent hills, terraces, and any other water related landform were surveyed. After determining the areas for inventory, the proposed corridor was inventoried by walking parallel pedestrian transects 20 meters apart across the Area of Potential Effect (APE).

Six cultural resources were recorded: historic dumps 32BI1116 and 32SK1070, historic cultural material scatter 32DU1789, and prehistoric isolated finds 32BIx919, 32BIx920, and 32SKx363. Metcalf Archaeological Consultants, Inc. considers that none of the cultural resources satisfy any of the criteria necessary to be eligible for the National Register of Historic Places and no further work is necessary. Metcalf Archaeological Consultants, Inc. recommends a determination of *No Historic Properties Affected* (36CFR800.4[d][1]) for the undertaking as inventoried, mapped, and documented herein.

After the initial inventory in September 2012, it became necessary to reroute approximately 4.6 miles of the Project corridor near the south end. Metcalf Archaeological Consultants, Inc. was engaged to conduct a Class III cultural resource inventory on the reroute. No cultural resources were encountered during this addendum inventory. A finding of *No Historic Properties Affected* is recommended for this undertaking as surveyed, mapped, and documented herein.

A copy of Metcalf Archaeological Consultants, Inc. report and addendum is presented as Tab 4 Attachment A.

B.7. QUALIFICATIONS OF PERSONS CONTRIBUTING TO THE STUDY

See Tab 1 section D.6 of the Application for Corridor Certificate.

B.8. MAPS

See Tab 1 section D.7 of the Application for Corridor Certificate and Tab 2.

B.9. OTHER MATTERS

The information provided below is in accordance with North Dakota Century Code 49-22-08.1 Sections 1.e, 1.f, and 1.g.

B.9.a Right-of-Way Preparation, Construction and Reclamation Procedures

Critical safety aspects of pipeline installation are governed by US Department of Transportation regulations subject to the jurisdiction of its Pipeline and Hazardous Material Safety Administration (PHMSA) which had tended to standardize installation techniques. The advance of technology has introduced significant improvements in the techniques and equipment available to install underground pipe lines, reducing both the time required and the size or “footprint” of impact.

Construction of the pipeline will follow standard techniques employed by other projects installed in North Dakota. Essentially an outdoor assembly line, the major steps typically include (1) survey and staking of the ROW; (2) clearing; (3) front-end grading; (4) ROW topsoil stripping; (5) pipeline route staking; (6) pipe stringing; (7) pipe bending; (8) pipe alignment and initial weld; (9) fill and cap with final weld; (10) as built footage; (11) x-ray inspection and weld repair; (12) coating field welds and coating inspection; (13) Trenching; (14) lowering pipe into trench; (15) as-built survey; (16) pad, backfill to rough grade; (17) hydrostatic testing and system tie-in; (18) clean-up; (19) restoration and re-vegetation.

B.9.a. (1) Survey and Staking

Before construction, Belle Fourche crews will survey and stake the centerline and exterior boundaries of the construction ROW. The exterior boundary stakes will mark the limit of approved disturbance areas, which will be maintained

throughout the construction period. The North Dakota One Call system will be contacted to identify and mark the locations of underground utilities in the construction corridor. During this period, equipment involved in pipeline construction will be moved onto the ROW using existing roads for access wherever practicable.

B.9.a. (2) Clearing

Belle Fourche will clear the 75-foot-wide construction ROW and additional temporary extra workspaces of shrubs and trees. The clearing crew will typically mow, chip, mulch and/or haul off all non-merchantable timber. Burning of non-merchantable wood may be allowed when the contractor has obtained the necessary permits and approvals. All merchantable timber will be property of Belle Fourche unless other arrangements are made with the landowner.

B.9.a. (3) Grading

Following clearing, grading of the ground surface may be done to provide a relatively smooth working surface and a safe working area. Typically, a 10-footwide buffer will be left relatively undisturbed, except where grading is needed for bridge installation, at waterbody crossings until immediately before the pipelines are installed across the waterbody. Where necessary, grading of the adjacent 50 foot of ROW to accommodate staging equipment and materials will also occur.

Temporary bridges will be installed at waterbodies, except for drainage ditches, intermittent waterbodies, and other non-fisheries water, along the pipeline route to provide temporary access for equipment traveling along the construction ROW. In addition, temporary erosion control measures will be installed in accordance with Belle Fourche's Environmental Mitigation Plan (EMP). See Tab 5 and the drawings presenting in Tab 6 for additional details.

B.9.a. (4) Topsoil Stripping

Topsoil will be stripped and segregated in agricultural areas, cropland, hayfields, pasture, residential areas, and other areas as requested by the landowner along the pipeline route in accordance with Belle Fourche's EMP. In unsaturated wetlands, a maximum of 12 inches of surficial soils will also be stripped from the trench areas. Topsoil will be stripped to a maximum depth of 12 inches in cultivated lands.

B.9.a. (5) Pipeline Route Staking

Once the topsoil has been stripped and stockpiled, the route will be resurveyed and the pipeline route staked.

B.9.a. (6) Pipe Stringing

Before excavating pipeline trenches, individual joints of pipe will be strung along the construction ROW and arranged to be accessible to construction personnel. This operation typically involves specially designed stringing trucks to deliver pipe from pipe yards to the ROW. Small portable cranes and/or side-boom tractors are used to unload the stringing trucks and place pipe along the ROW.

B.9.a. (7) Pipe Bending.

A mechanical pipe bending machine will bend individual joints of pipe to the desired angle to accommodate natural ground contours or pipeline alignment. In certain areas, prefabricated fittings will be used where field bending is not practicable.

B.9.a. (8) Pipe Alignment and Initial Weld

After stringing and bending are complete, pipe sections will be aligned and placed on temporary supports located adjacent to the proposed trench locations. Pipe ends will be attached to each other using short welds.

B.9.a. (9) Fill and Cap Segment Welds

Final welds will be completed around the entire circumference of the pipe joints in compliance with applicable industry standards and PHMSA requirements.

B.9.a. (10) As-built Footage

Once welding is complete, Belle Fourche will compare the as-built condition and length of the pipe with construction drawings. Documents will be edited to reflect impacts of field decisions as well as final locations of lateral tie-in points, other pipeline apertures and cathodic protection connections.

B.9.a. (11) X-Ray Inspection and Weld Repair

A third-party inspection service provider meeting US DOT certification requirements will be engaged to inspect all field-welds, both visually and radiographically. When welds are deemed inadequate, appropriate repairs will be made consistent with US DOT PHMSA regulations trenches in accordance with PHMSA regulations and re-inspected. Inspection records will be cross referenced against the final “as-built” footage of the pipeline.

B.9.a. (12) Coating and Coating Inspection of Field Welds

The pipe is typically delivered with a factory coating of fusion-bonded epoxy or similar material to prevent corrosion. Belle Fourche will apply coating at welded joints and will electronically inspect the pipeline coating before the pipe is lowered into the trench.

B.9.a. (13) Trenching

Backhoes and/or ditching machines will be used to excavate trenches in accordance with PHMSA regulations, which require a minimum thirty inches of cover for normal excavations and 18 to 30 inches of cover in rocky areas. The trench walls will generally be kept vertical to the extent practicable and the trenches will typically be 4 to 8 feet wide, but may be wider in less stable or saturated soils.

Where trench dewatering is needed, water will be discharged directly to the ground if there is adequate vegetation along the ROW to filter the water effectively. Where vegetation is sparse or absent, or in environmentally sensitive areas (e.g., adjacent to waterbodies or wetlands), straw bale dewatering structures or suitable filtering alternatives will be used to minimize siltation in adjacent waterbodies.

B.9.a. (14) Lowering Pipe Into Trench.

After welding and coating are completed and the trench is excavated, the pipe will be lowered into the trench by side-boom tractors.

B.9.a. (15) As-built Survey

A survey of the final location of the pipeline will be made.

B.9.a. (16) Pad and Backfill to Grade.

Bladed equipment or a specially designed backfilling machine will be used to backfill the trench to the approximate ground surface elevation. This generally consists of replacing the material excavated from the trench. In areas where topsoil has been segregated, subsoil will be replaced first, and topsoil will be spread uniformly on top. Directly above the pipeline, an excess of soil or “crown” will be placed to allow for future settling, excluding wetlands.

Construction debris, including wooden supports, welding rods, containers, brush, trees, or refuse of any kind, will not be permitted in the backfill. If an excessive amount of rocks are present in the backfill, the pipeline will be protected with rock shield or similar protective coating and/or backfilled with clean padding prior to backfilling with the rocky material.

B.9.a. (17) Hydrostatic Testing.

After backfilling, Belle Fourche will hydrostatically test the pipelines in accordance with the PHMSA regulations to ensure that the system is capable of operating at the design pressure. The testing process will involve filling a segment of the pipeline with water and maintaining a prescribed pressure for a specified amount of time.

The length of individual test segments will be determined by topography and water availability. Water withdrawals used to fill and test the pipelines will be consistent with state regulations and Belle Fourche's EMP. Belle Fourche will obtain hydrostatic test water from major waterbodies crossed by the pipeline and/or municipal sources along the pipeline route. Adequate flow will be maintained to protect aquatic life and allow for downstream uses. The test water will be discharged through energy dissipation devices to the ground surface or to a nearby waterbody. These discharges will be done in accordance with Belle Fourche's EMP and permits issued by the state agencies.

B.9.a. (18) Cleanup.

After the backfilling is completed, Belle Fourche will re-grade and restore work areas as nearly as practicable to the original contour of the land. Fences that are removed to install the pipelines will be reconstructed across the ROW.

B.9.a. (19) Restoration and Revegetation.

Following installation and final cleanup of the pipeline construction area, original grade and contours will be restored to the extent practicable and temporary and permanent erosion controls will be installed. Disturbed areas will be revegetated in accordance to permit requirements, and site-specific landowner requests.

B.9.b Landowner Issues

B.9.b. (1) Procedures for Landowner Relations.

Landowners have already been contacted in person, by telephone and/or by mail to secure permission for the new pipeline ROW adjacent to Belle Fourche's current pipeline ROW. They have been advised to expect pipeline construction to begin in 2014 and that survey crews will be working along the pipeline route.

All necessary permits have been acquired. Belle Fourche is committed to giving landowners complete information about the Project and keeping them informed throughout construction. Belle Fourche has already contacted landowners to discuss methods of damage settlements, tenant's rights, and to address any unique property concerns.

B.9.b. (2) List of Landowners.

By use of county records, a current list of landowners was generated and used to contact residents and will also be used for future personal contacts. In addition to landowners, all known tenant farmers in the construction area have been notified of the Project. A list of landowners and tenants who have been contacted regarding the Project is attached as Tab 4 Appendix 4.C.

B.9.c Operations and Safety

B.9.c. (1) Pipeline Operation and Control.

The Belle Fourche pipeline system is controlled via the Casper Control Center located in Casper, Wyoming.

The Control Center is manned by pipeline operators 24 hours a day. The Control Center also serves as an emergency center to receive calls from employees, the public or public officials reporting unusual conditions or pipeline failures.

A telemetry (SCADA) system provides 24-hour monitoring of the pipeline and pump operations, including pressures, temperatures and flow rates. This telemetry system enhances immediate response capability to any potential problems. The pipeline is also designed to accommodate an instrumented internal inspection device to detect and record the type and location of corrosion or other defects for long-term monitoring of the pipeline integrity.

B.9.c. (2) Communications Capabilities.

Land-lines and satellite communications are used to exchange the necessary computerized data for pipeline monitoring and control. Belle Fourche uses cellular phones as needed, to facilitate personnel communications during operation, maintenance, or emergency activities.

B.9.c. (3) Protection of the Pipe from Damage.

Belle Fourche has an aggressive program in educating excavators and the public about the presence of the pipeline and preventing damage to the pipeline from excavating equipment. Belle Fourche has joined and strongly supports the North Dakota One-Call system and other one-call systems in the states where they exist.

The pipeline is protected from corrosion in a number of ways. Pipelines are covered with a protective coating. In addition, all buried or submerged metallic structures (pipeline systems) are under a cathodic protection system, as required by PHMSA regulations.

B.9.c. (4) Inspections.

Belle Fourche conducts routine inspections of the pipeline and facilities to determine that the system is operating properly, in compliance with PHMSA regulations.

Each calendar year (not to exceed a 15-month interval), the cathodic protection system is monitored by taking pipe/structure-to-soil and line current (where possible) readings. Additionally, each rectifier and anode ground bed used to impose cathodic protection on the pipeline is inspected to ensure proper operation. Repairs and adjustments to the cathodic protection system are either made during the annual survey or during later maintenance activities. At least six times per year, each rectifier and critical cathodic protection interference bond to foreign structures is inspected and corrective measures taken, if needed.

Belle Fourche also periodically evaluates the effectiveness of its cathodic protection system by conducting supplemental close interval surveys (e.g., close interval pipe to soil, etc.) of the system.

The pipeline route is patrolled by air at least 26 times per year to inspect the surface conditions of land on or adjacent to the pipeline ROW. Line walking inspection of the ROW is sometimes used to supplement aerial inspections in congested areas. This inspection also assists in identifying unknown construction or other unsafe activity on the pipeline ROW.

Isolating valves are checked at least twice per year to ensure proper operation. In the event of a leak, it is important for valves to close properly to isolate the section of pipeline and minimize the amount of petroleum that may escape. Other components of the pipeline, such as tanks and pump stations are also routinely inspected.

Belle Fourche began a program in the 1980s of periodically inspecting the pipeline internally with an electronic inspection tool – called “instrument pigs.” These devices travel through the inside of the pipeline and either mechanically, ultrasonically, or magnetically examine the condition (dents, gouges, corrosion, or cracks) of the pipe by on-board computers. Results of the inspection are then analyzed, and the pipe inspected to verify preliminary findings and then repaired as required.

All overpressure safety devices capable of limiting, regulating, controlling, and/or relieving operating pressures are inspected and tested to ensure the device is in good mechanical condition and functioning properly.

Periodically, government officials inspect Belle Fourche’s compliance with applicable government regulations. Inspections of Belle Fourche’s written procedures, records, and facilities are routinely conducted by the PHMSA.

B.9.c. (5) Maintenance.

Many other maintenance activities are performed on the pipeline and related facilities. Belle Fourche has a comprehensive preventative maintenance program that meets and, in many cases exceeds, minimum federal safety standards set forth PHMSA regulations, including 49 CFR Part 195. When facilities are added or replaced, there are comprehensive standards for their design and installation in both Belle Fourche procedure manuals and contract specifications. Repair pipe is pre-tested and other components used to repair the pipeline meet national standards and regulatory requirements. Other procedures, such as welding procedures, movement of the pipe, coating repair, corrosion control, and tank maintenance are all guided by written procedures which have been reviewed by the PHMSA inspectors.

B.9.c. (6) Training of Personnel.

Belle Fourche has established a comprehensive orientation, technical, safety, emergency, and on-the-job training program that is in compliance with the Operator Qualification rules issued by the PHMSA under 49 CFR Part 195. As personnel progress

in pipeline operation and maintenance positions, they receive hundreds of hours of formal and on-the-job training. Demonstrations of competence are shown through review of job performance, periodic pipeline control system simulators, emergency exercises, welding certification tests, and other functions required to continue safe pipeline operation and maintenance.

B.9.c. (7) Public Awareness Program.

Belle Fourche conducts a public education program to ensure that the affected public (those who work and live along the pipeline), excavators, local public officials, and emergency units of government are aware of how to recognize and avoid or respond to a pipeline emergency. Belle Fourche has also been active at the local, county, and state level in emergency response planning and joint training/exercises to prepare all potential responders to deal with emergencies.

The pipeline route is marked at all public road and railway crossings (at a minimum) to increase the public's awareness of the underground pipeline. Additional markings are posted at valves, other pipeline facilities, and stations along the pipeline route.

B.9.c. (8) Emergency Preparedness.

Belle Fourche's operating and maintenance practices are aimed at preventing emergencies on the pipeline. However, it is imperative that Belle Fourche be prepared to respond to an emergency should one occur. In addition to preventative activities described above, Belle Fourche's emergency response program includes pre-planning, equipment staging, notifications, and emergency and leak containment procedures and engaging the services of area contract spill responders.