

LOENBRO

COMPREHENSIVE
PIPELINE SOLUTIONS

SUMMIT MIDSTREAM

10/11/13

EPPING

8" SM LINE NORTH OF HWY 50

INSPECTION _____

LOENBRO REP Mark J. [Signature]

PSS-COMPANIES



2070 South 4250 West - Salt Lake City, Utah 84104 - Phone (801) 363-1933 - Fax (801) 531-9548

CALIBRATION CERTIFICATE

CERTIFICATE NUMBER: ND061212013-1

Details +/-: 1.0% ACCURACY

DATE CALIBRATED: 06/21/2013
DUE DATE: 06/21/2014
INDICATED TEMPERATURE RANGE: 0-150
INDICATED PRESSURE RANGE: 0-3000 PSI
SERIAL NO: 202E-320943
MANUFACTURER: JW Measurements

TYPE OF INSTRUMENT CALIBRATED: TEMPERATURE/PRESSURE RECORDER
INSTRUMENT FINDINGS/STATUS: UNIT IS IN TOLERANCE/ INSTRUMENT MEETS OR EXCEEDS SPECIFICATIONS.

BASED ON INTERNATIONAL STANDARDS OF GRAVITY: (980.665 cm./sq.).

BASED ON CALIBRATED PISTON AREA: (0.3969154 cm./sq.) (0.061522 cm./sq.).

TYPE OF STANDARD USED TO CALIBRATE: CHANDLER DEADWEIGHT TEST UNIT SPT. (55-100-B) SERIAL No. 166X: KESSLER TEST THERMOMETERS; SERIAL NO, 87B2276 & 403751.

ALL STANDARD DIRECTLY TRACEABLE TO NATIONAL INSTITUTE OF STANDARDS & TECHNOLOGIES TEST NO: (N.I.S.T.) 2.6/172490 & 6.6/139577.

CALCULATED USING MASS VALUES, AREA, AO, AND STATED GRAVITY.
ROOM TEMPERATURE/HUMIDITY (AT TIME OF TEST): 77°F (25°C)/ 40%.

CALIBRATED BY: CORBIN MAUDSLEY


SIGNATURE



PO Box 2417
 2210 4th Avenue West
 Williston, North Dakota 58802-2417
 1/800-932-8803

CERTIFICATE OF CERTIFICATION

Customer: Lo en Bro Date: 09/03/13
 Serial # 965013 Model # Crystal XP2I Gauge
 Equipment Used: Chandler D.W.T Equipment SN: 8303

Up Scale Test				Down Scale Test			
D.W.T	Gauge	Allowed	Left As	D.W.T	Gauge	Allowed	Left As
0	0	25	0	0	0	25	0
500	499	25	-1	500	499	25	-1
1500	1499	25	-1	1500	1499	25	-1
2000	1998	25	-2	2000	1998	25	-2
3500	3498	25	-2	3500	3498	25	-2
4000	3998	25	-2	4000	3998	25	-2
5000	4998	25	-2	5000	4998	25	-2

When compared to a deadweight tester, the gauge must compare with in + or - .5% of scale and must remain linear across the scale

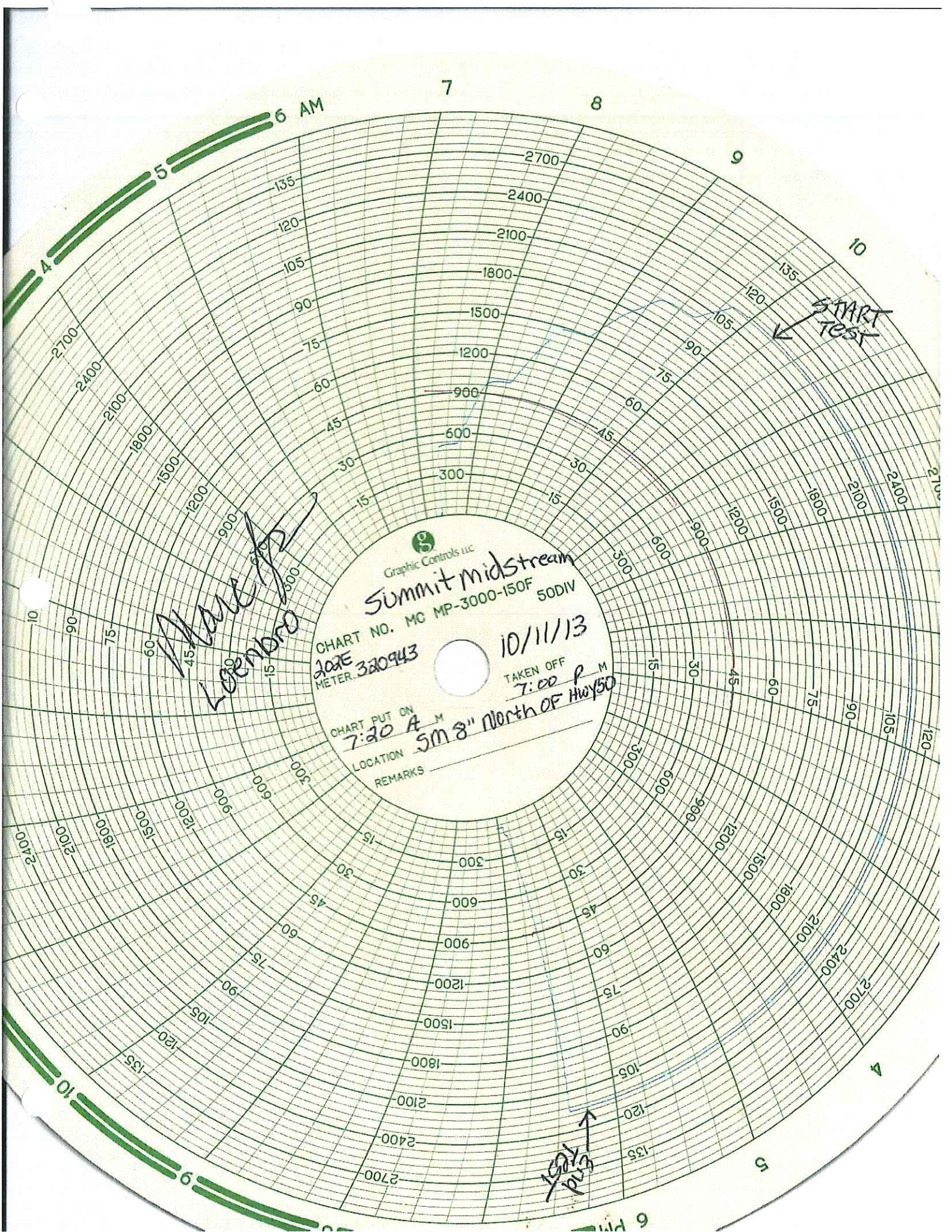
Check by: John F. Date: 09/03/13

Serial Number 965013
 Model 5KPSIXP2I
 Units PSI
 Firmware Version D0018
 Run Index 1
 Logging Type Actual
 Logging Interval 900
 Start Time 10/11/2013 7:17
 Stop Time 10/11/2013 19:07

Message Store 8" SM LINE
 NORTH OF HWY 50

Seconds	Reading	Time	
0	-0.1	7:17 AM	
900	519.3	7:32 AM	
1800	651.5	7:47 AM	
2700	995.7	8:02 AM	
3600	1002.5	8:17 AM	
4500	1278.8	8:32 AM	
5400	1504.9	8:47 AM	
6300	1531	9:02 AM	
7200	1874.2	9:17 AM	
8100	2003.9	9:32 AM	
9000	2098.1	9:47 AM	
9900	2248.9	10:02 AM	
10800	2249.6	10:17 AM	START TEST
11700	2249.6	10:32 AM	
12600	2249.5	10:47 AM	
13500	2249.3	11:02 AM	
14400	2249.5	11:17 AM	
15300	2249.4	11:32 AM	
16200	2249.4	11:47 AM	
17100	2249.4	12:02 PM	
18000	2249.4	12:17 PM	
18900	2249.3	12:32 PM	
19800	2249.2	12:47 PM	
20700	2249.4	1:02 PM	
21600	2249.4	1:17 PM	
22500	2249.4	1:32 PM	
23400	2249.3	1:47 PM	
24300	2249	2:02 PM	
25200	2249.4	2:17 PM	
26100	2249.5	2:32 PM	
27000	2249.5	2:47 PM	
27900	2249.5	3:02 PM	
28800	2249.6	3:17 PM	
29700	2249.7	3:32 PM	
30600	2249.6	3:47 PM	
31500	2249.5	4:02 PM	
32400	2249.8	4:17 PM	
33300	2249.7	4:32 PM	
34200	2249.6	4:47 PM	
35100	2249.5	5:02 PM	
36000	2249.6	5:17 PM	
36900	2249.6	5:32 PM	

37800	2249.8	5:47 PM	
38700	2249.7	6:02 PM	
39600	2249.7	6:17 PM	END TEST
40500	1834.5	6:32 PM	
41400	140.1	6:47 PM	
42300	59.4	7:02 PM	



Matt Loebbro

Graphic Controls LLC
Summit midstream
CHART NO. MC MP-3000-150F 50DIV
JOE 320943
10/11/13
CHART PUT ON 7:20 A.M.
TAKEN OFF 7:00 P.M.
LOCATION 5m 8" North of Hwy 50
REMARKS

START TEST

END TEST