

**LOENBRO**

**COMPREHENSIVE  
PIPELINE SOLUTIONS**

**SUMMIT MIDSTREAM**

10/15/13

EPPING

8" SM LINE SOUTH OF HWY 50

INSPECTION \_\_\_\_\_

LOENBRO REP \_\_\_\_\_



PO Box 2417  
 2210 4th Avenue West  
 Williston, North Dakota 58802-2417  
 1/800-932-8803

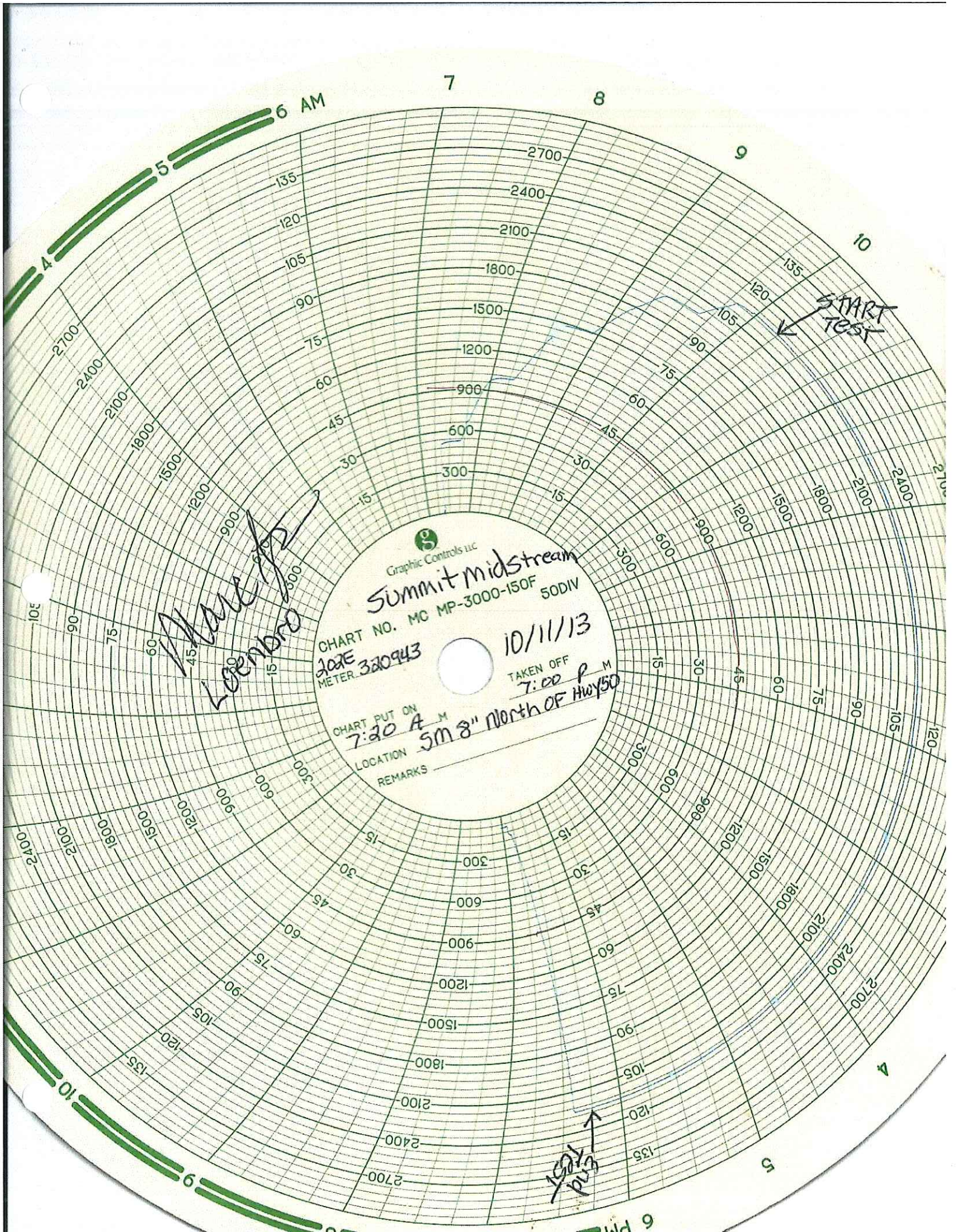
**CERTIFICATE OF CERTIFICATION**

Customer: Lo en Bro Date: 09/03/13  
 Serial # 965013 Model # Crystal XP2I Gauge  
 Equipment Used: Chandler D.W.T Equipment SN: 8303

Up Scale Test				Down Scale Test			
D.W.T	Gauge	Allowed	Left As	D.W.T	Gauge	Allowed	Left As
0	0	25	0	0	0	25	0
500	499	25	-1	500	499	25	-1
1500	1499	25	-1	1500	1499	25	-1
2000	1998	25	-2	2000	1998	25	-2
3500	3498	25	-2	3500	3498	25	-2
4000	3998	25	-2	4000	3998	25	-2
5000	4998	25	-2	5000	4998	25	-2

When compared to a deadweight tester, the gauge must compare with in + or - .5% of scale and must remain linear across the scale

Check by: John F. Date: 09/03/13



*Matt  
Loembro*

Graphic Controls LLC  
Summit midstream  
CHART NO. MC MP-3000-150F 50DIV  
DATE 10/11/13  
METER 320943  
TAKEN OFF 7:00 P M  
CHART PUT ON 7:20 A M  
LOCATION 5m 8" North of Hwy 50  
REMARKS

START TEST

END TEST



PO Box 2417  
 2210 4th Avenue West  
 Williston, North Dakota 58802-2417  
 1/800-932-8803

**CERTIFICATE OF CERTIFICATION**

Customer: Lo en Bro Date: 09/03/13  
 Serial # 965013 Model # Crystal XP2I Gauge  
 Equipment Used: Chandler D.W.T Equipment SN: 8303

Up Scale Test				Down Scale Test			
D.W.T	Gauge	Allowed	Left As	D.W.T	Gauge	Allowed	Left As
0	0	25	0	0	0	25	0
500	499	25	-1	500	499	25	-1
1500	1499	25	-1	1500	1499	25	-1
2000	1998	25	-2	2000	1998	25	-2
3500	3498	25	-2	3500	3498	25	-2
4000	3998	25	-2	4000	3998	25	-2
5000	4998	25	-2	5000	4998	25	-2

When compared to a deadweight tester, the gauge must compare with in + or - .5% of scale and must remain linear across the scale

Check by: John F. Date: 09/03/13

# PSS-COMPANIES



2070 South 4250 West - Salt Lake City, Utah 84104 - Phone (801) 363-1933 - Fax (801) 531-9548

## CALIBRATION CERTIFICATE

CERTIFICATE NUMBER: NDO61212013-1

Details +/-: 1.0% ACCURACY

DATE CALIBRATED: 06/21/2013  
DUE DATE: 06/21/2014  
INDICATED TEMPERATURE RANGE: 0-150  
INDICATED PRESSURE RANGE: 0-3000 PSI  
SERIAL NO: 202E-320943  
MANUFACTURER: JW Measurements

TYPE OF INSTRUMENT CALIBRATED: TEMPERATURE/PRESSURE RECORDER  
INSTRUMENT FINDINGS/STATUS: UNIT IS IN TOLERANCE/ INSTRUMENT MEETS OR EXCEEDS SPECIFICATIONS.

BASED ON INTERNATIONAL STANDARDS OF GRAVITY: (980.665 cm./sq.).

BASED ON CALIBRATED PISTON AREA: (0.3969154 cm./sq.) (0.061522 cm./sq.).

TYPE OF STANDARD USED TO CALIBRATE: CHANDLER DEADWEIGHT TEST UNIT SPT. (55-100-B) SERIAL No. 166X: KESSLER TEST THERMOMETERS; SERIAL NO. 87B2276 & 403751.

ALL STANDARD DIRECTLY TRACEABLE TO NATIONAL INSTITUTE OF STANDARDS & TECHNOLOGIES TEST NO: (N.I.S.T.) 2.6/172490 & 6.6/139577.

CALCULATED USING MASS VALUES, AREA, AO, AND STATED GRAVITY.  
ROOM TEMPERATURE/HUMIDITY (AT TIME OF TEST): 77°F (25°C)/ 40%.

CALIBRATED BY: CORBIN MAUDSLEY

  
\_\_\_\_\_  
SIGNATURE