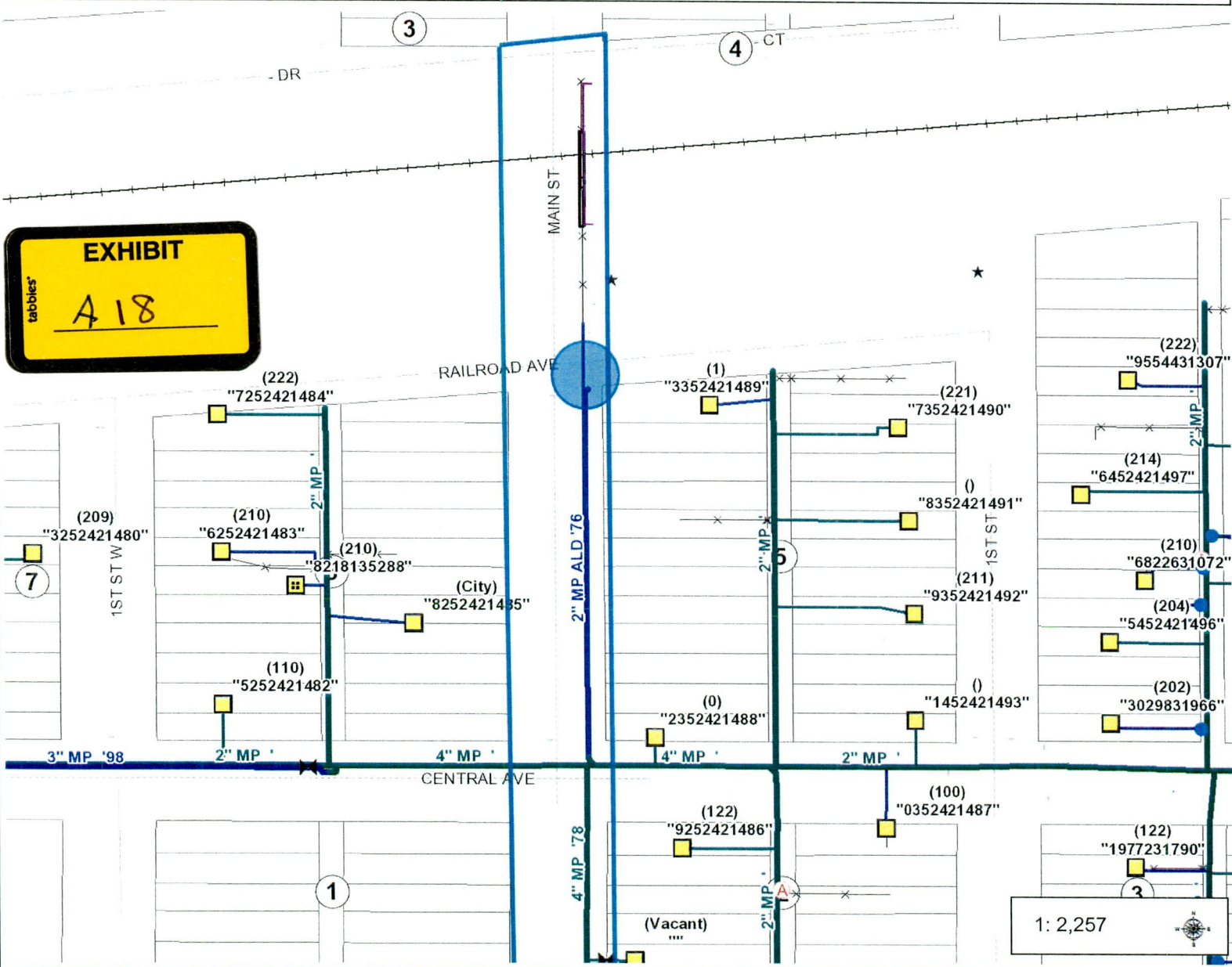


Filed 06/30/2015 Pages: 1  
 GS-14-229 Exhibit A18  
 Filed 06/30/2015 Pages: 1  
 GS-13-886 Exhibit A18  
 Filed 06/30/2015 Pages: 1  
 GS-13-885 Exhibit A18  
 Filed 06/30/2015 Pages: 1  
 GS-13-884 Exhibit A18

**EXHIBIT**  
tabbies  
A18



- Legend**
- GAS.GasF
  - ➔ GAS.GasL
  - ☀ GasFieldP
  - Gas Office Note
  - ★ <all other values>
  - ★ Created
  - ★ Field Verified
  - ★ Completed
  - Gas Field Line
  - Gas Valve
  - ✂ <all other values>
  - EFV
  - Excess Flow Valve
  - CP Rectifier
  - CP Test Station
  - CP Isolated Inspec
  - CP Ground Bed
  - CP Galvanic Anode
  - Gas Marker Ball
  - Gas Service Point
  - Multiple Meter Service
  - Single Meter Service
  - No Meter Service
  - Gas Station
  - <all other values>
  - District Regulator Station

47 GS-14-229 Exhibit A18  
 46 GS-13-886 Exhibit A18  
 47 GS-13-885 Exhibit A18  
 46 GS-13-884 Exhibit A18  
 44 PU-14-671 Exhibit A18  
 47 Public Service Commission  
 47 GS-14-230 Exhibit A18  
 47 Public Service Commission

**Notes**  
 Case GS-13-884  
 Damage occurred inside expired Located area.

0.1 0 0.04 0.1 Miles  
 WGS\_1984\_Web\_Mercator\_Auxiliary\_Sphere  
 © Montana-Dakota Utilities Company

This map is a user generated static output from the MDU GIS Silverlight mapping website and is for reference only. It is not to be relied upon for construction purposes. It is provided for planning purposes only.  
 FIELD LOCATES ARE REQUIRED FOR LOCATION OF GAS AND ELECTRICAL FACILITIES

1: 2,257