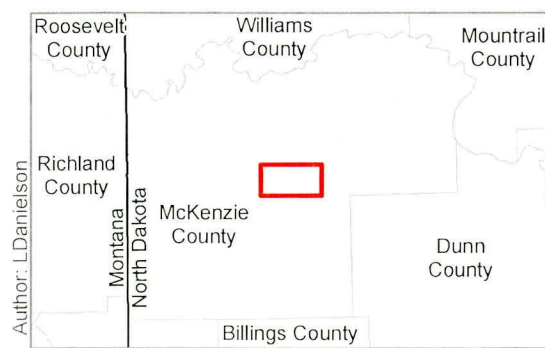
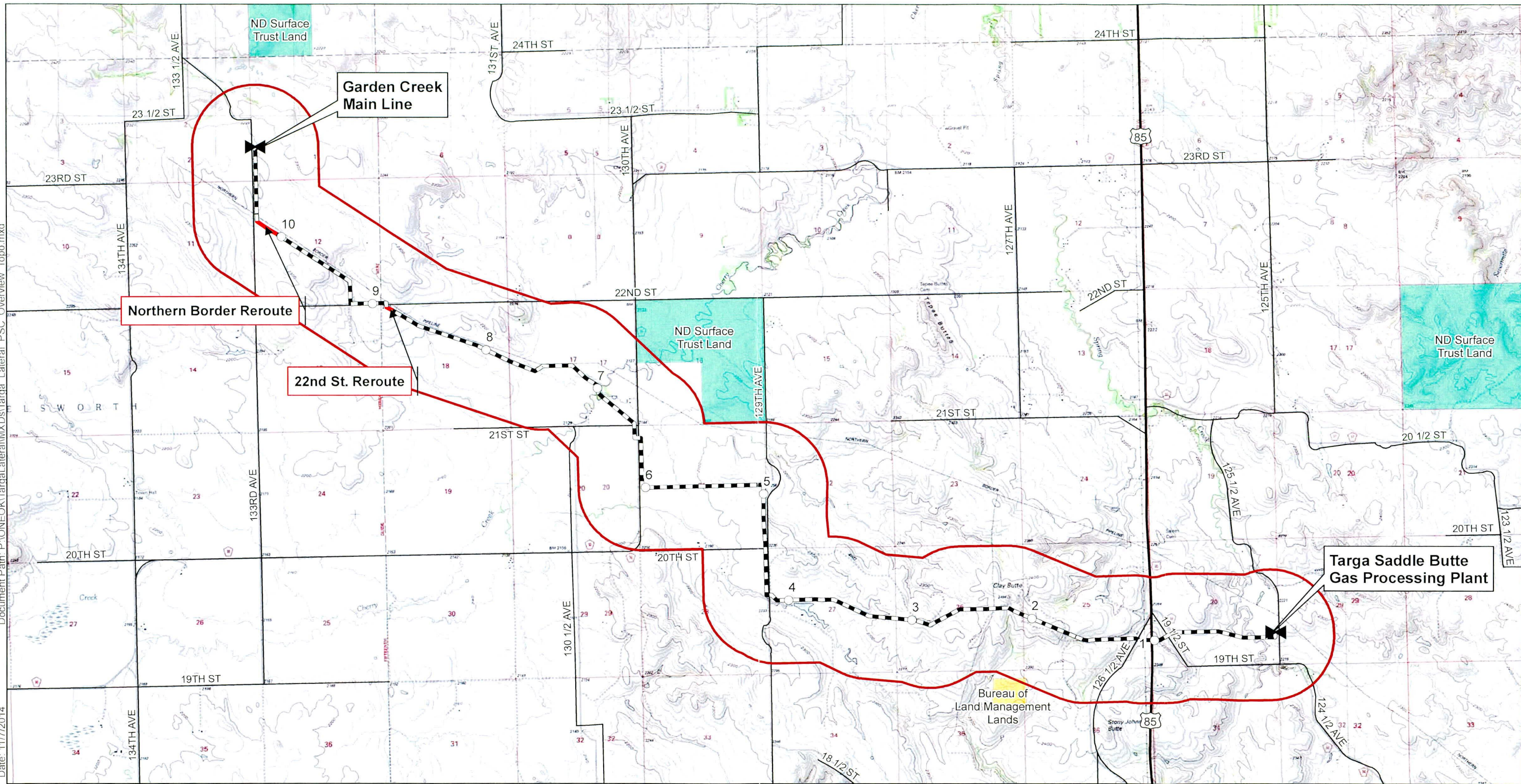


Document Path: P:\ONEOK\Targa\lateral\MXDs\Targa Lateral_PSC_Overview_Topo.mxd
Date: 11/7/2014



- Milepost
- ⚡ Valve
- Reroute
- ⚡ Centerline
- ▭ Corridor (1 Mile)
- ▭ Federal Land
- ▭ State Land

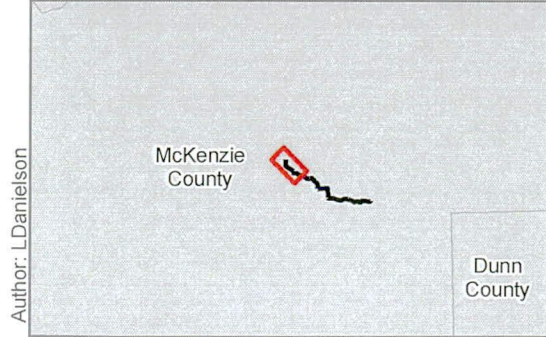
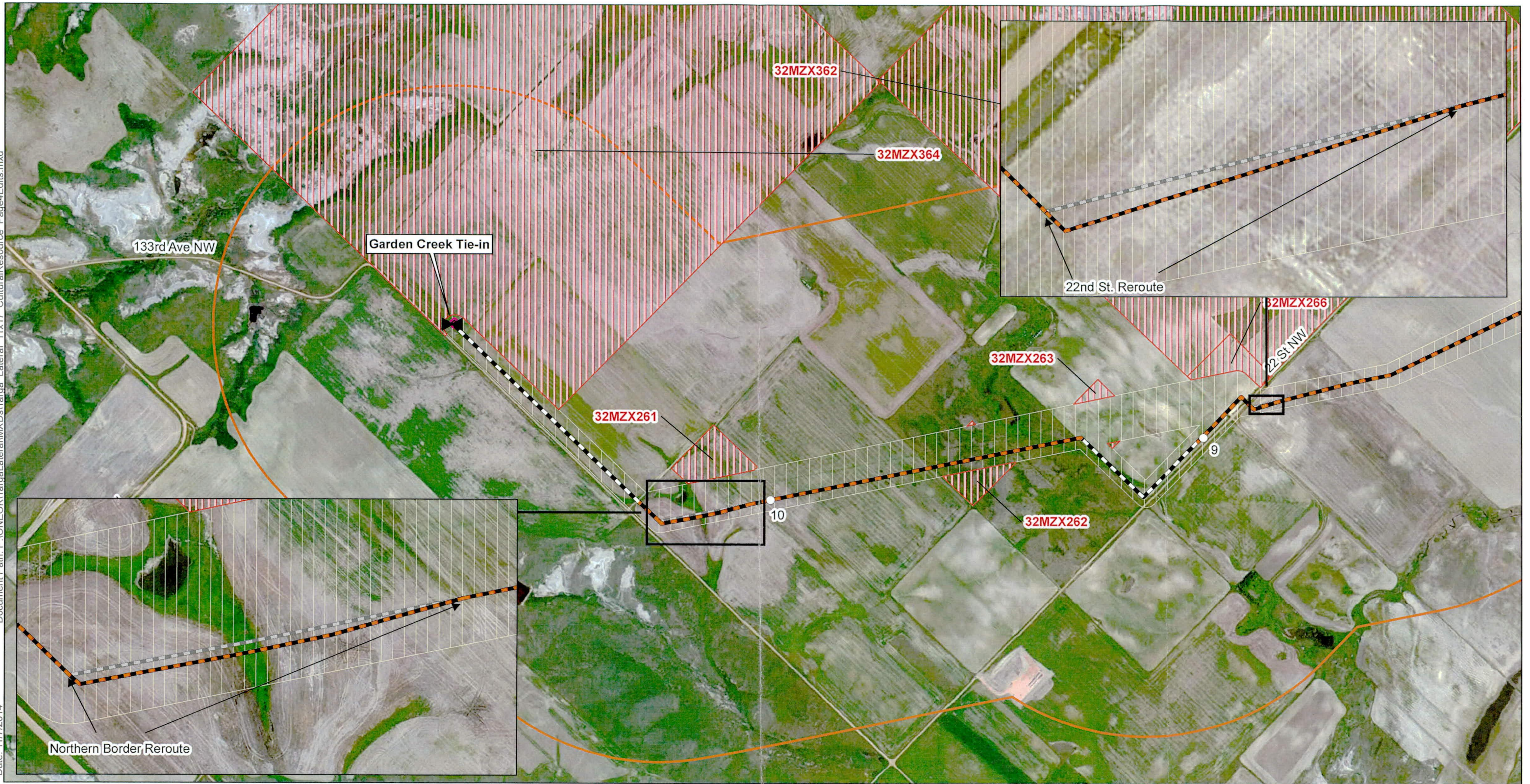
ONEOK
BAKKEN PIPELINE
A SUBSIDIARY OF ONEOK PARTNERS

E3 ENVIRONMENTAL
Enhancing Execution with Experience

0 0.5 1 2 Miles
1:46,000
Map not to scale, for environmental review purposes only.

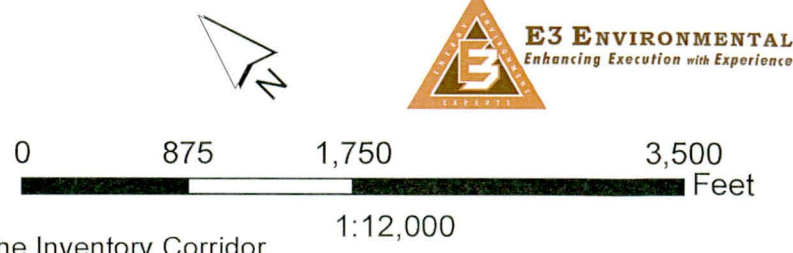
ONEOK Bakken Pipeline, L.L.C.
Targa Lateral
Topo Overview Map
McKenzie County, ND

Document Path: P:\ONEOK\Targa Lateral\MXDs\Targa Lateral_11x17_CulturalResource_Page4Edits.mxd
Date: 11/7/2014



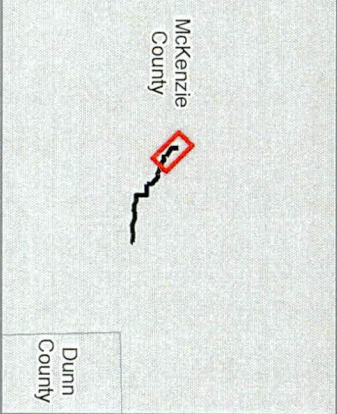
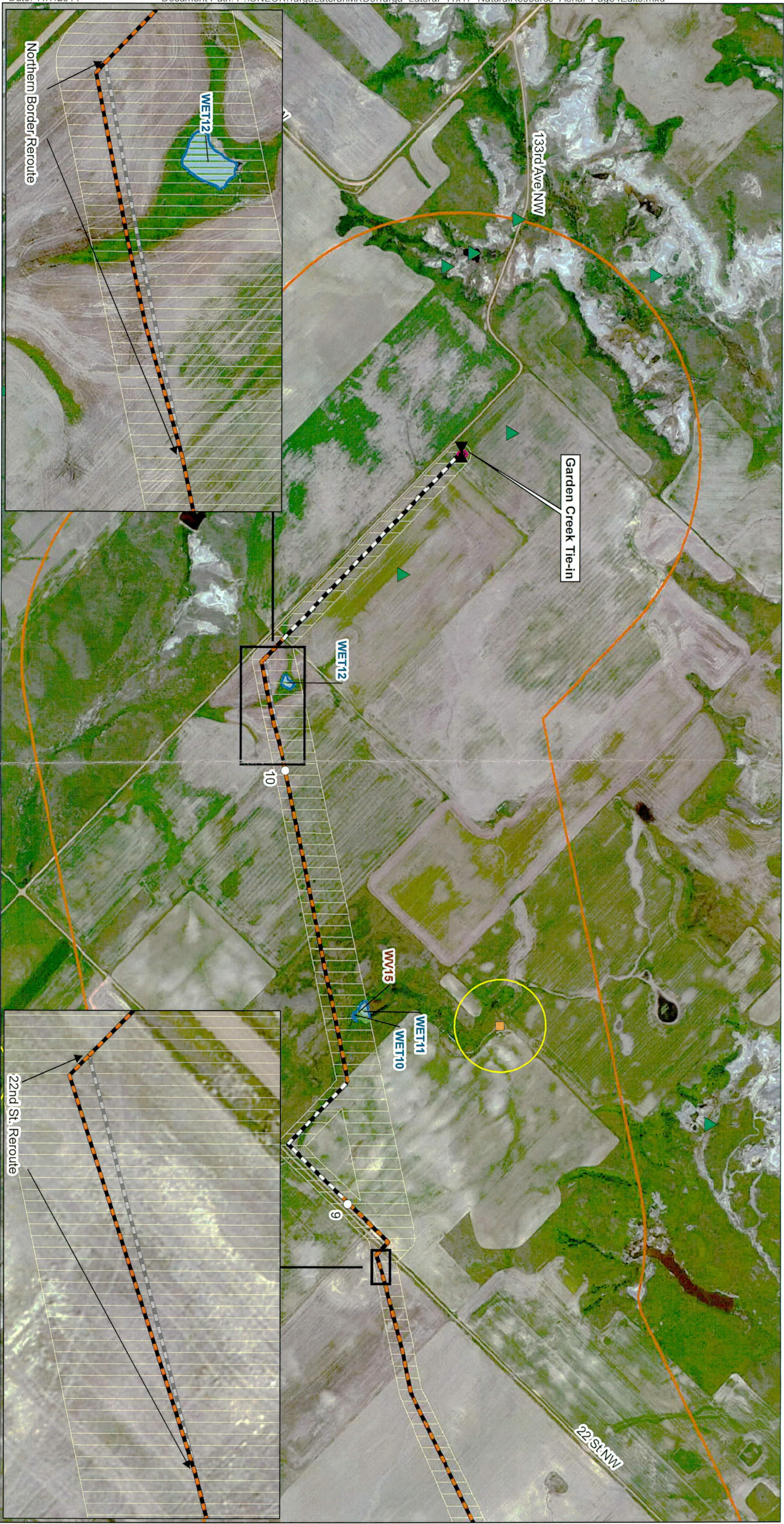
Valves	Previous Alignment	Cultural Avoidance
Milepost	Receiver Boundary	
Centerline	Launcher Boundary	
Not Co-located	Inventory Corridor	
Co-located	Corridor (1 mile)	

Note: Class III survey efforts confirmed the that the site leads do not occur within the Inventory Corridor.
Map not to scale, for environmental review purposes only.



ONEOK Bakken Pipeline, L.L.C.
Targa Lateral Pipeline Project
 Siting Criteria
 Cultural Resource
 Page 1 of 1
 McKenzie County, North Dakota

Author: LDanielson



- Valve
- Milepost
- Centerline**
- Not Co-located
- Co-located
- Previous Alignment
- Inventory Corridor
- Corridor (1 mile)
- Launcher Boundary
- Receiver Boundary
- Survey Data**
- Stream
- Stream
- Stream
- Woody Vegetation
- Wetland
- Nest
- Nest Buffer
- Criteria Data**
- Occupied Structure
- Occupied Structure w/in 500ft of Inventory Corridor
- Abandoned Mine
- NDWC Well



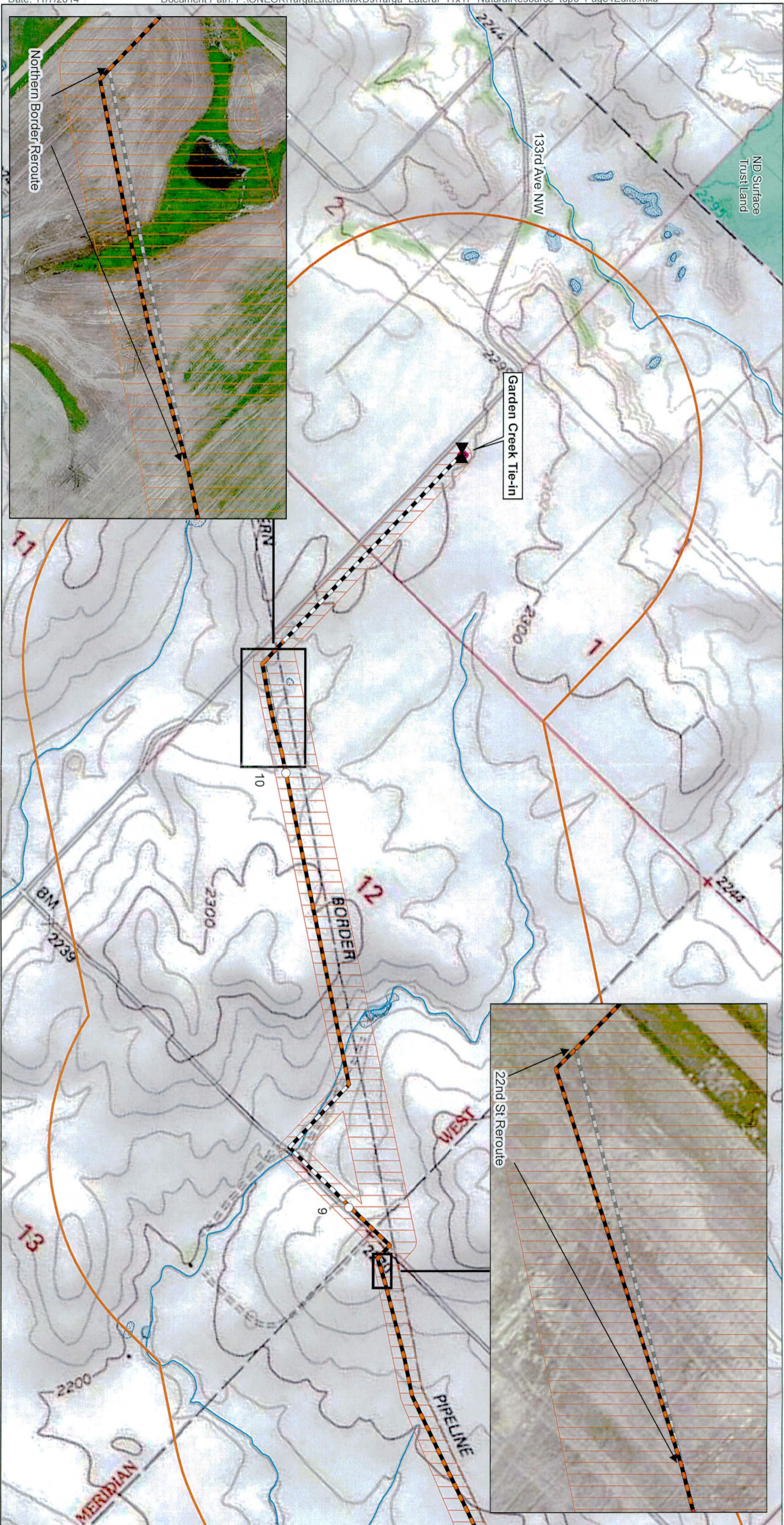
E3 ENVIRONMENTAL
Enhancing Execution with Experience





 0 500 1,000 2,000 Feet
 1:12,000

Map not to scale, for environmental review purposes only.



- Valve
- Milepost
- Centerline**
- Not Co-located
- Co-located
- Previous Alignment
- Inventory Corridor
- Corridor (1 mile)
- Launcher Boundary
- Receiver Boundary
- Criteria Data**
- Federal Land
- Joint Ownership
- Local Land
- Native American Land
- Private Conservation Land
- State Land
- PLOTS Land
- NHD Waterway
- NWI Wetland
- NHD Waterbody

E3 ENVIRONMENTAL
Enhancing Execution with Experience

0 500 1,000 2,000
Feet

1:12,000

Map not to scale, for environmental review purposes only.

ONEOK Bakken Pipeline, L.L.C.
Targa Lateral Pipeline Project
Siting Criteria
Natural Resource - Topo Map
Page 1 of 1
McKenzie County, North Dakota