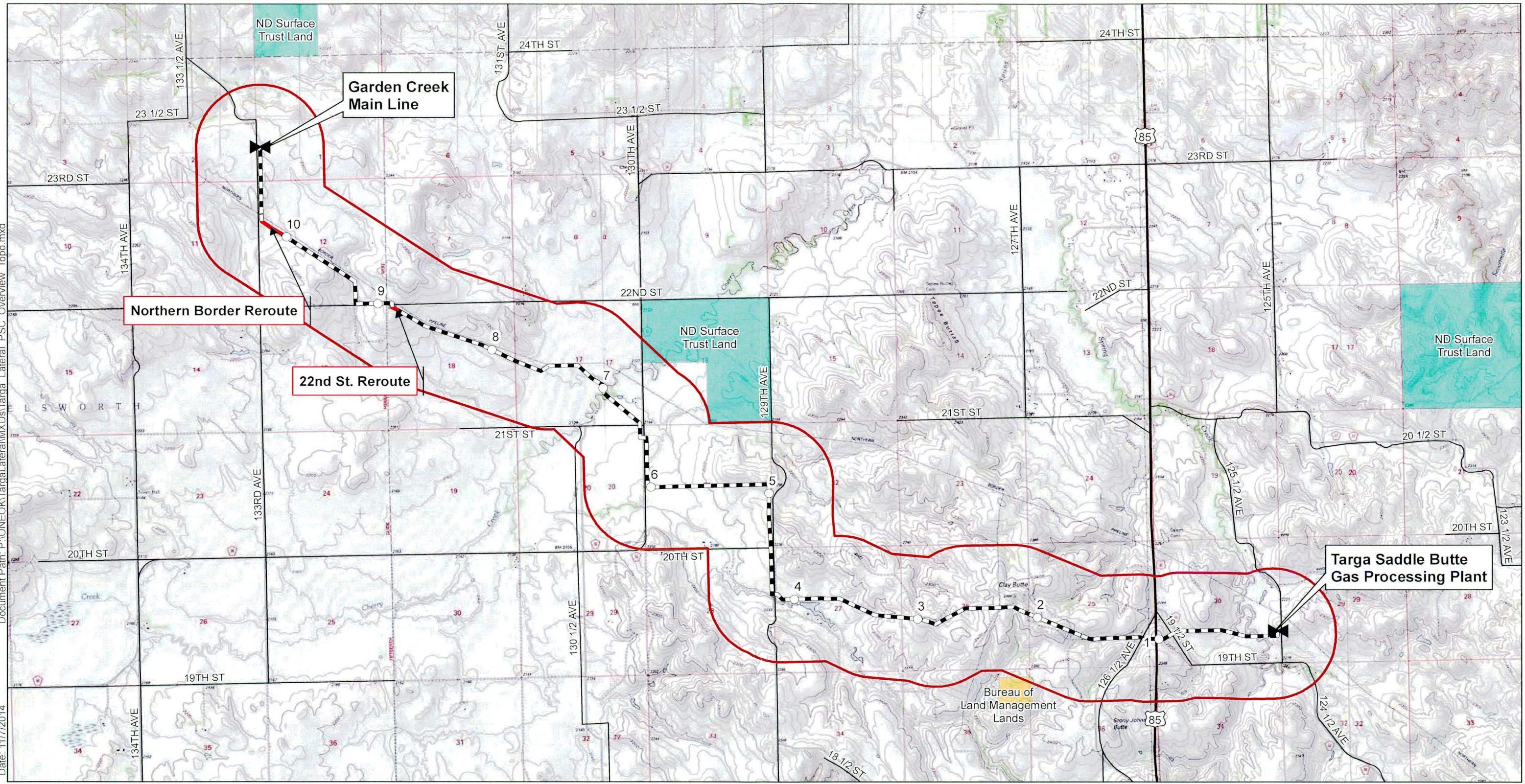


Document Path: P:\ONEOK\Targa\lateral\MXD\Targa\_Lateral\_PSC\_Overview\_Topo.mxd  
Date: 11/7/2014



- Milepost
- ◀ Valve
- Reroute
- ▬ Centerline
- ▭ Corridor (1 Mile)
- ▭ Federal Land
- ▭ State Land

**ONEOK**  
BAKKEN PIPELINE  
A SUBSIDIARY OF ONEOK PARTNERS

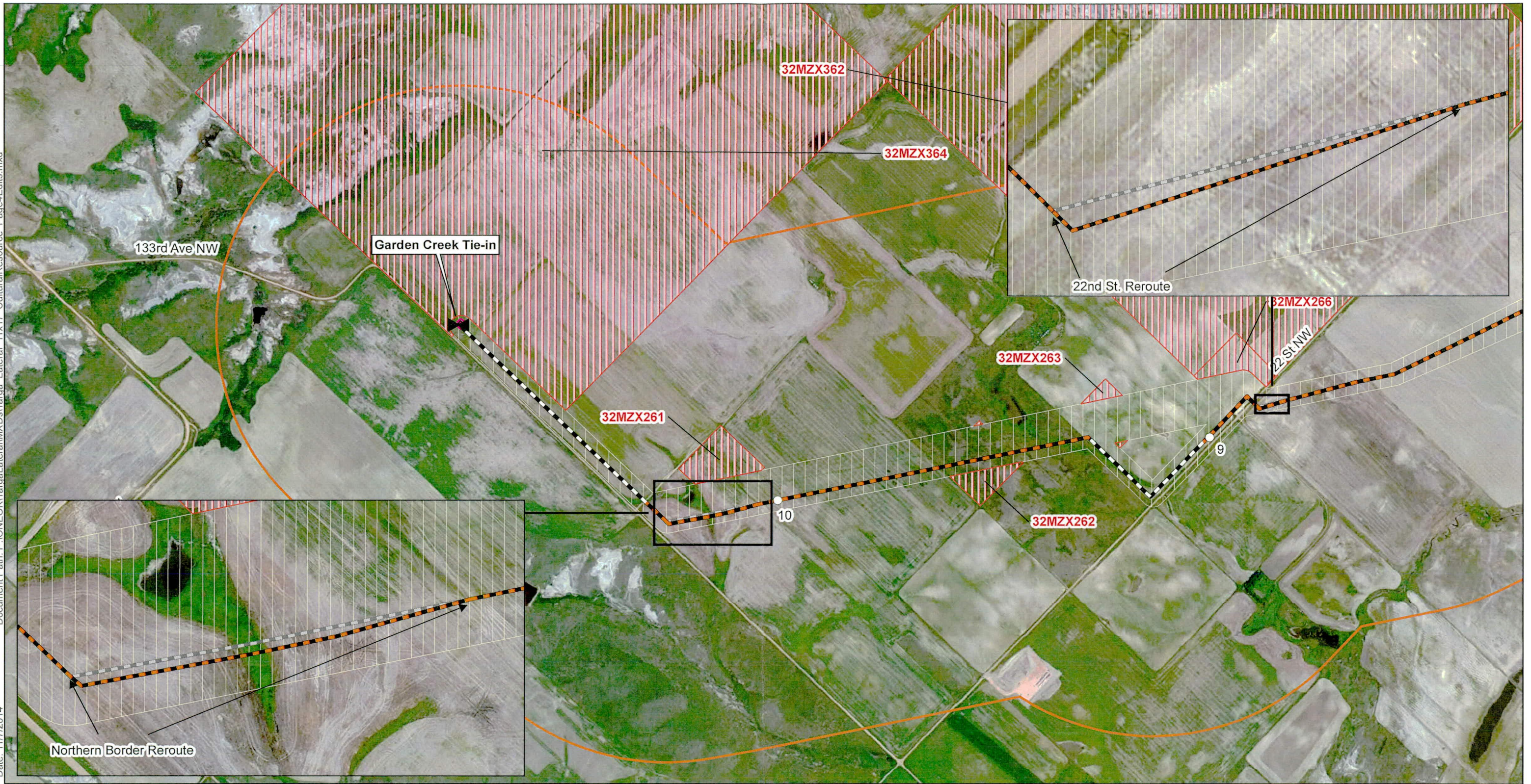
**E3 ENVIRONMENTAL**  
Enhancing Execution with Experience

0 0.5 1 2 Miles  
1:46,000  
Map not to scale, for environmental review purposes only.

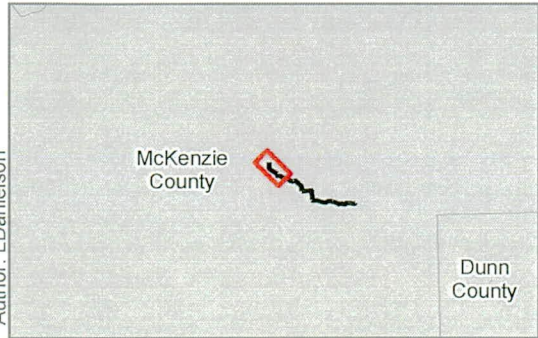
**ONEOK Bakken Pipeline, L.L.C.**  
Targa Lateral  
Topo Overview Map  
McKenzie County, ND

Author: L.Danielson

Document Path: P:\ONEOK\Targa\lateral\MXDs\Targa Lateral 11x17 CulturalResource Page4Edits.mxd  
Date: 11/7/2014



Author: L.Danielson

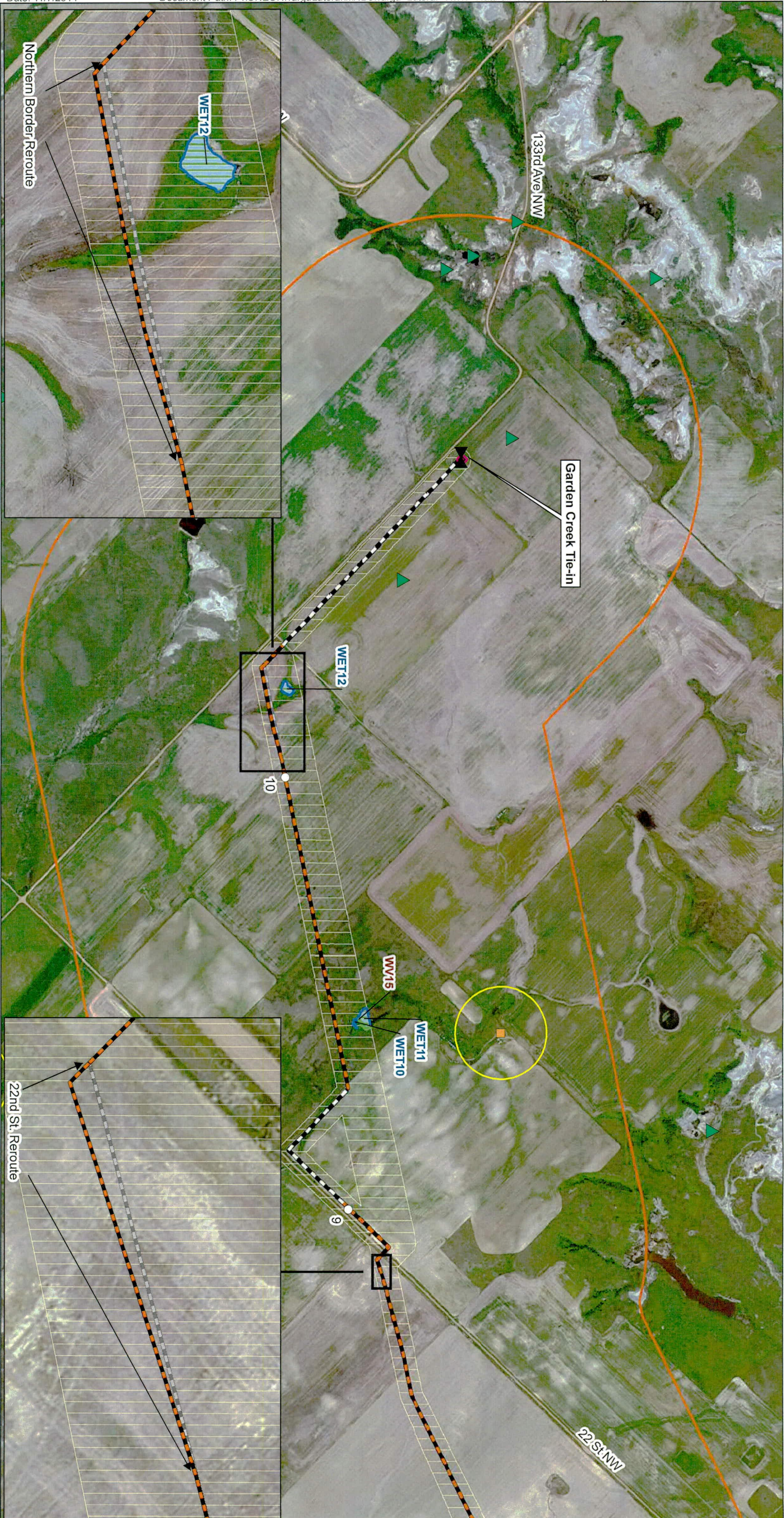


Valves	Previous Alignment	Cultural Avoidance
Milepost	Receiver Boundary	
<b>Centerline</b>	Launcher Boundary	
Not Co-located	Inventory Corridor	
Co-located	Corridor (1 mile)	

Note: Class III survey efforts confirmed the that the site leads do not occur within the Inventory Corridor.  
Map not to scale, for environmental review purposes only.

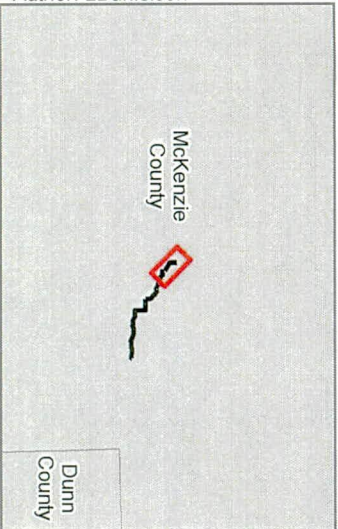
1:12,000

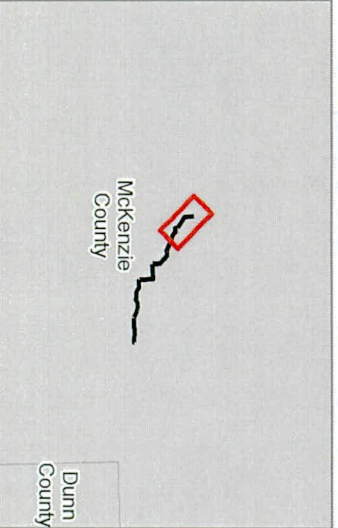
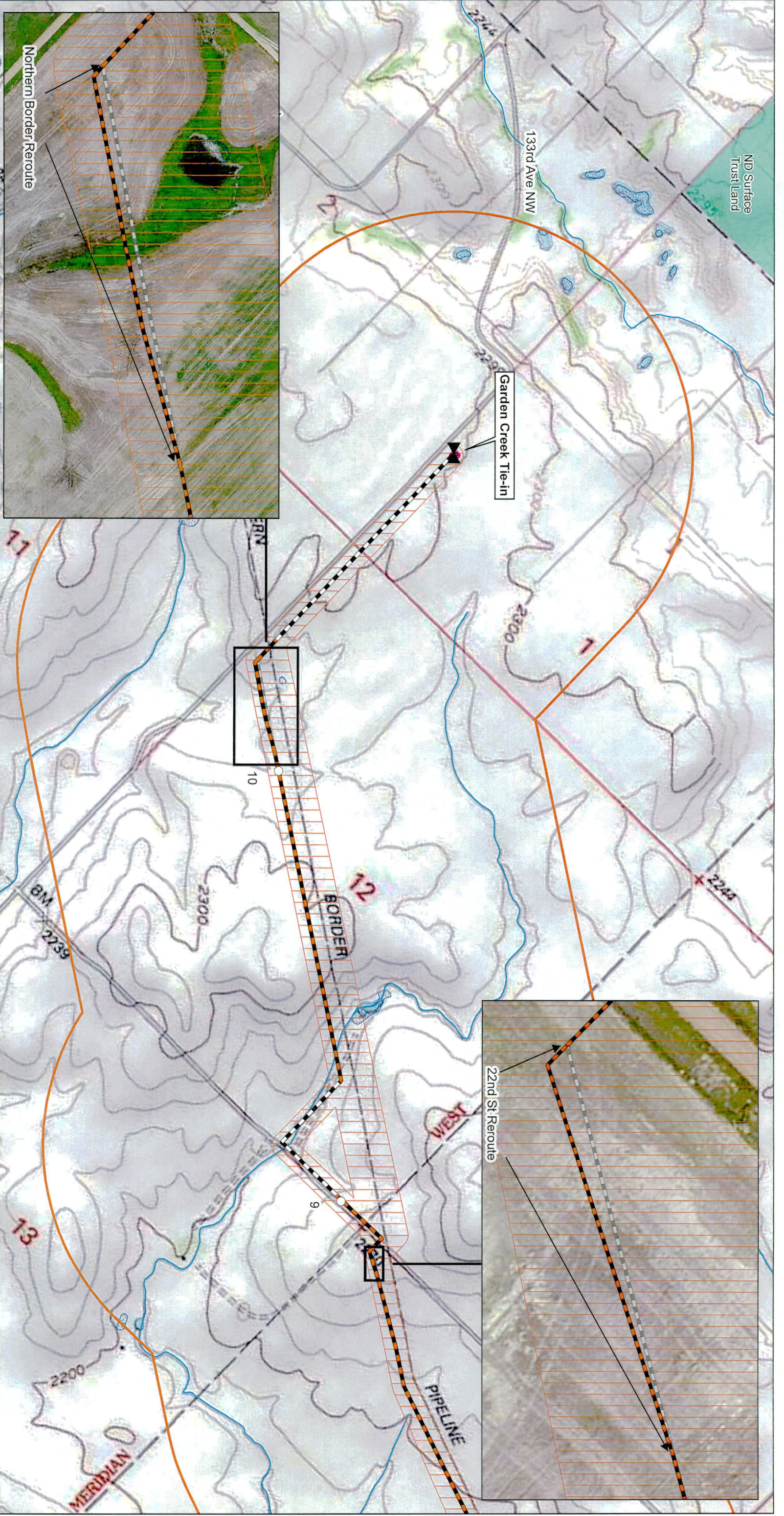
**ONEOK Bakken Pipeline, L.L.C.**  
**Targa Lateral Pipeline Project**  
 Siting Criteria  
 Cultural Resource  
 Page 1 of 1  
 McKenzie County, North Dakota



- |                   |                    |  |   |  |   |
|-------------------|--------------------|--|---|--|---|
|                   | Valve              |  | Launcher Boundary                       |  | Nest Buffer   |
|                   | Milepost           |  | Receiver Boundary                       |  | Criteria Data                                       |
| <b>Centerline</b> |                    |  | Stream                                  |  | Occupied Structure                                  |
|                   | Not Co-located     |  | Stream w/in 500ft of Inventory Corridor |  | Occupied Structure w/in 500ft of Inventory Corridor |
|                   | Co-located         |  | Woody Vegetation                        |  | Abandoned Mine                                      |
|                   | Previous Alignment |  | Wetland                                 |  | NDWC Well   |
|                   | Inventory Corridor |  | Nest                                    |  |   |
|                   | Corridor (1 mile)  |  |   |  |   |

Map not to scale, for environmental review purposes only.





- Valve
- Milepost
- Centerline**
  - Not Co-located
  - Co-located
  - Previous Alignment
  - Inventory Corridor
- Criteria Data**
  - Corridor (1 mile)
  - Launcher Boundary
  - Receiver Boundary
  - Native American Land
  - Private Conservation Land
  - State Land
  - PLOTS Land
  - NHD Waterway
  - NWI Wetland
  - NHD Waterbody
  - Federal Land
  - Joint Ownership
  - Local Land



**ONEOK Bakken Pipeline, L.L.C.**  
 Targa Lateral Pipeline Project  
 Siting Criteria  
 Natural Resource - Topo Map  
 Page 1 of 1  
 McKenzie County, North Dakota

Map not to scale, for environmental review purposes only.