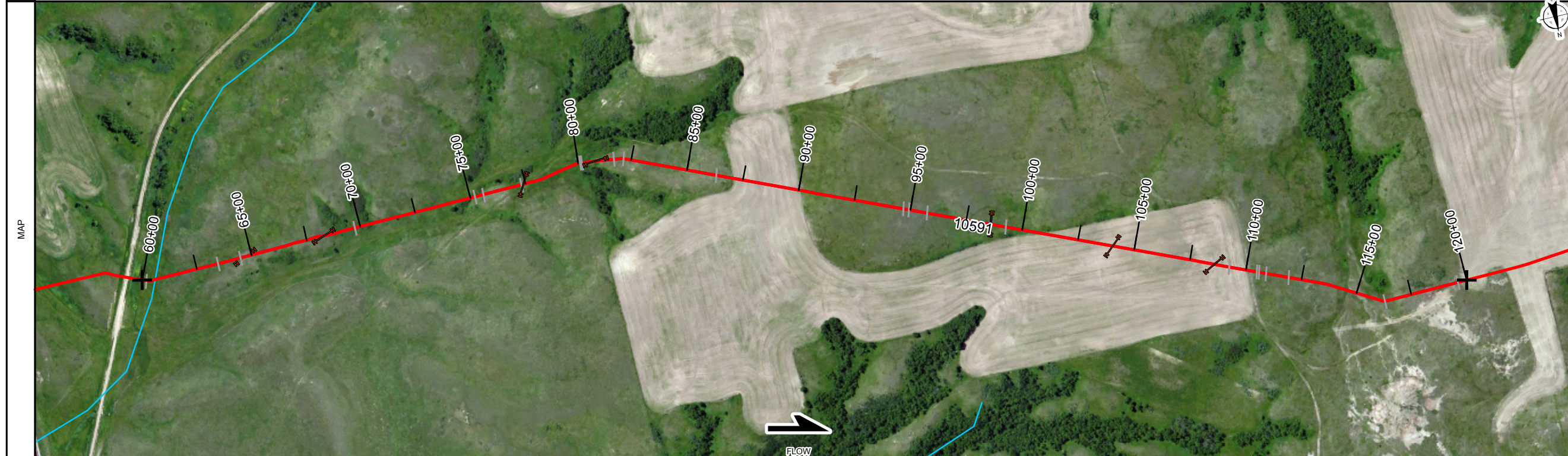


OWNERSHIP	NDMK.TGL.034.10 NORMAN SONDRÖL 2695 FT or 163.33 RODS 60+00 to 80+20	NDMK.TGL.033.10 NORMAN SONDRÖL 2907 FT or 176.18 RODS 80+20 to 109+27	NDMK.TGL.032.10 NORMAN SONDRÖL 2728 FT or 165.33 RODS 109+27 to 120+00
SERIES	INDEX 10591 ROUTE ID 1286 SERIES 1000 - 60+00 to 120+00		
PIPELINE STATIONING	60+00 MATCH LINE 60+21 END SLICK BORE  63+48 BEGIN SLICK BORE 64+50 PIPELINE 64+69 FLC_PIPE 16 IN ONEOK  68+31 FLC_PIPE 16 IN ONEOK 69+77 END SLICK BORE  75+21 ROCK SHIELD 75+61 ROCK SHIELD  77+33 ROCK SHIELD 77+38 FLC_PIPE 6 IN ONEOK  80+11 PIPELINE 80+15 BEGIN SLICK BORE 80+20 PROPERTY LINE 80+84 FLC_PIPE 8 IN TARGA 81+74 END SLICK BORE 82+16 PIPELINE  86+32 PIPELINE  94+68 PIPELINE 94+93 ROCK SHIELD 95+76 ROCK SHIELD  98+58 FLC_PIPE NO AS-BUILT POINTS 99+29 PIPELINE  104+03 FLC_PIPE 6 IN TARGA  108+58 FLC_PIPE 4 IN ONEOK 109+27 PROPERTY LINE 109+27 SECTION 26-T149N-R99W  110+50 PIPELINE 110+60 ROCK SHIELD 110+90 ROCK SHIELD 111+89 PIPELINE  116+30 PIPELINE  119+62 PIPELINE 120+00 MATCH LINE		

COUNTY	McKenzie County, North Dakota
PLS	T 149 N R 99 W SEC 25
HCA	RESERVED FOR - COULD AFFECT HCA SEGMENT DETAIL



LEGEND	
	AIR MARKER CROSSING
	BEND
	BOND LEAD
	CASING
	COATING CHANGE
	COMMUNICATION CROSSING
	DIG
	EQUATION
	FENCE
	GROUND BED
	LAUNCHER/RECEIVER
	NATURAL GROUND
	POINT OF INTERSECTION (PI)
	PIPE CROSSING
	PIPE SEGMENT CHANGE
	POWER LINE CROSSING
	RAILROAD CROSSING
	RECTIFIER
	RIVER WEIGHT
	ROAD CROSSING
	STOPPOLE TEE
	TAP/ TOR
	TEST LEAD
	VALVE MAIN LINE
	VALVE CHECK
	WATERWAY
	STATION - ACTIVE
	STATION - INACTIVE
	HCA

PIPE SPECIFICATIONS	
NO.	DESCRIPTION
2	8.625" O.D. X .188" W.T., API-5L_X52
3	8.625" O.D. X .219" W.T., API-5L_X52

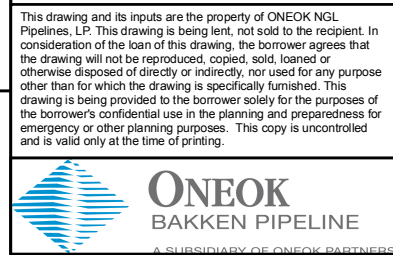
COATING SPECIFICATIONS	
NO.	DESCRIPTION
40	Coating - EPOXY - FBE

REFERENCE DRAWINGS	
NO.	TITLE

GENERAL INFORMATION	
TOPIC	COMMENT

REVISIONS			
NO.	DESCRIPTION	BY	CKD/DATE
1.01	3/19/15	JMR/JMR	3/15
1.00	3/18/2015	JMR/JMR	3/15

This drawing and its inputs are the property of ONEOK NGL Pipelines, LP. This drawing is being lent, not sold to the recipient. In consideration of the loan of this drawing, the borrower agrees that the drawing will not be reproduced, copied, sold, loaned or otherwise disposed of directly or indirectly, nor used for any purpose other than for which the drawing is specifically furnished. This drawing is being provided to the borrower solely for the purposes of the borrower's confidential use in the planning and preparedness for emergency or other planning purposes. This copy is uncontrolled and is valid only at the time of printing.



**Bakken System  
INDEX 10591**

(10591) Targa Lateral 8in  
FROM 60+00 TO 120+00  
TOTAL PIPE LENGTH = 6000 FEET

FILE: AI-10574-10591-ASMap-B-2

SHEET CREATION DATE: 3/19/2015 2:12:31 PM

UTM - 1983 Zone 13      SCALE: 1 IN = 500 FT

BandDef\_MPL\_B.xml      SHEET 2 OF 11

COATING	CS 40	CS 40	CS 40	CS 40	CS 40	CS 40	CS 40	CS 40	CS 40	CS 40
	24 FT 60+00 to 60+24	366 FT 60+24 to 63+90	594 FT 63+90 to 69+84	1053 FT 69+84 to 80+37	140 FT 80+37 to 81+77	2812 FT 81+77 to 109+89	44 FT 109+89 to 110+33	593 FT 110+33 to 116+26	8 FT 116+26 to 116+34	366 FT 116+34 to 120+00

SCHEMATIC	PS 3	PS 2	PS 3	PS 2	PS 3	PS 2	PS 3	PS 2	PS 3	PS 2
	24 FT 60+00 to 60+24	366 FT 60+24 to 63+90	594 FT 63+90 to 69+84	1053 FT 69+84 to 80+37	140 FT 80+37 to 81+77	2812 FT 81+77 to 109+89	44 FT 109+89 to 110+33	593 FT 110+33 to 116+26	8 FT 116+26 to 116+34	366 FT 116+34 to 120+00

