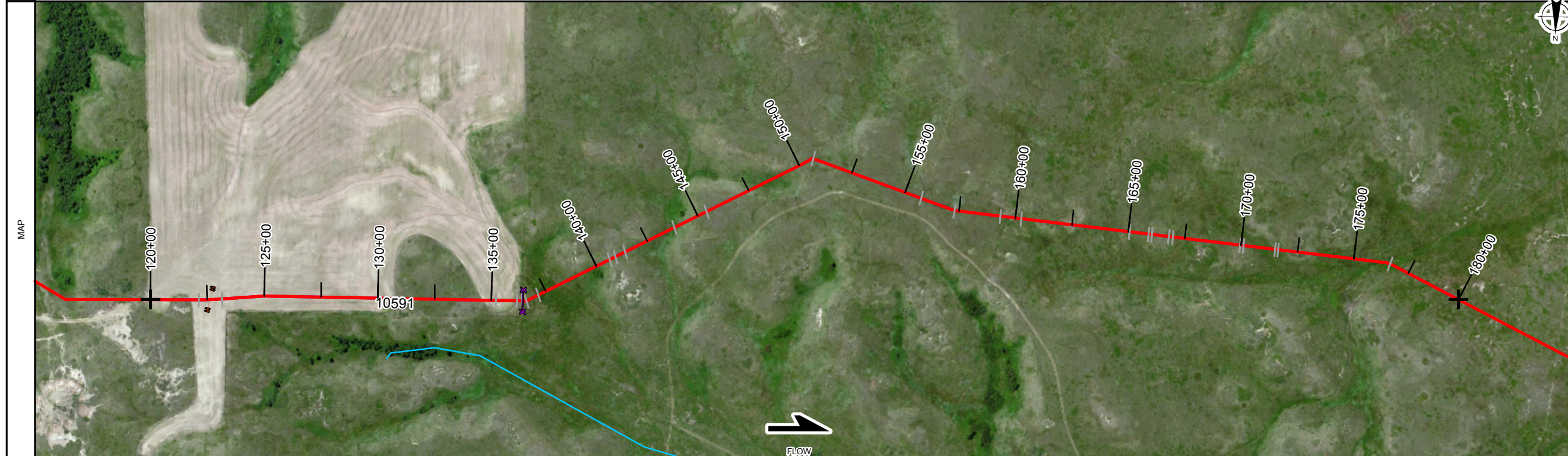


OWNERSHIP	NDMK.TGL.032.10 NORMAN SONDRÖL 2728 FT or 165.33 RODS 120+00 to 136+55	NDMK.TGL.031.10 PETER HELLING 2852 FT or 172.85 RODS 136+55 to 165+07	NDMK.TGL.030.10 PETER HELLING 1759 FT or 106.61 RODS 165+07 to 180+00
SERIES	INDEX 10591 ROUTE ID 1286 SERIES 1000 - 120+00 to 180+00		
PIPELINE STATIONING	120+00 MATCH LINE 122+15 BEGIN SLICK BORE 122+60 FLC PIPE 4 IN HESS CORP 122+62 FLC PIPE 3 IN HESS CORP 123+16 END SLICK BORE 123+17 END SLICK BORE 130+72 PIPELINE 135+22 ROCK SHIELD 136+13 ROCK SHIELD 136+37 PIPELINE 136+37 BARBED 136+55 PROPERTY LINE 137+12 ROCK SHIELD 140+64 ROCK SHIELD 140+93 PIPELINE 141+40 ROCK SHIELD 143+84 ROCK SHIELD 145+42 ROCK SHIELD 150+70 PIPELINE 155+73 PIPELINE 157+31 PIPELINE 159+33 ROCK SHIELD 160+27 ROCK SHIELD 165+07 SECTION 27-T148N-R99W 165+07 PROPERTY LINE 165+90 ROCK SHIELD 166+06 PIPELINE 166+79 ROCK SHIELD 166+98 ROCK SHIELD 169+86 ROCK SHIELD 170+12 ROCK SHIELD 171+52 ROCK SHIELD 171+64 ROCK SHIELD 176+61 PIPELINE 180+00 MATCH LINE		
COUNTY	McKenzie County, North Dakota		
PLS	T 149 N R 99 W SEC 26		
HCA	RESERVED FOR - COULD AFFECT HCA SEGMENT DETAIL		

LEGEND	
	AIR MARKER CROSSING
	BEND
	BOND LEAD
	CASING
	COATING CHANGE
	COMMUNICATION CROSSING
	DIG
	EQUATION
	FENCE
	GROUND BED
	LAUNCHER/RECEIVER
	NATURAL GROUND
	POINT OF INTERSECTION (PI)
	PIPE CROSSING
	PIPE SEGMENT CHANGE
	POWER LINE CROSSING
	RAILROAD CROSSING
	RECTIFIER
	RIVER WEIGHT
	ROAD CROSSING
	STOPPOLE TEE
	TAP/ TOR
	TEST LEAD
	VALVE MAIN LINE
	VALVE CHECK
	WATERWAY
	STATION - ACTIVE
	STATION - INACTIVE
	HCA

NO.	DESCRIPTION
2	8.625" O.D. X .188" W.T., API-5L_X52
3	8.625" O.D. X .219" W.T., API-5L_X52



PIPE SPECIFICATIONS	
NO.	DESCRIPTION
2	8.625" O.D. X .188" W.T., API-5L_X52
3	8.625" O.D. X .219" W.T., API-5L_X52

COATING SPECIFICATIONS	
NO.	DESCRIPTION
40	Coating - EPOXY - FBE

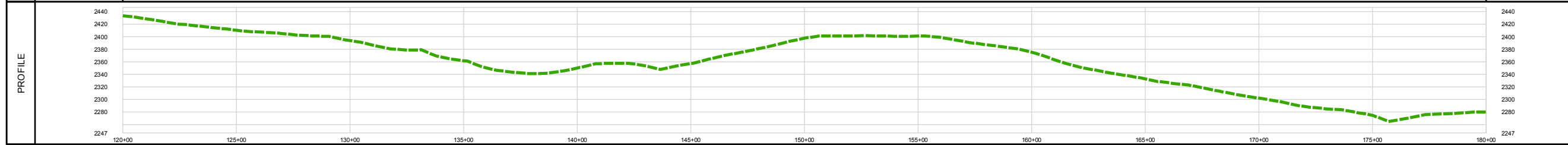
REFERENCE DRAWINGS	
NO.	TITLE

GENERAL INFORMATION	
TOPIC	COMMENT

REVISIONS				
NO.	DESCRIPTION	BY	CKD	DATE
1.01	3/19/15	JMR	JMR	3/15
1.00	3/18/2015	JMR	JMR	3/15

COATING	CS 40 203 FT 120+00 to 122+03 to 122+03	CS 40 117 FT 123+20 to 123+20	CS 40 1333 FT 123+20 to 136+53	CS 40 7 FT 136+53 to 136+60	CS 40 1406 FT 136+60 to 150+66	CS 40 8 FT 150+66 to 150+74	CS 40 2564 FT 150+74 to 176+38	CS 40 44 FT 176+38 to 176+82	CS 40 318 FT 176+82 to 180+00
---------	---	-------------------------------------	--------------------------------------	-----------------------------------	--------------------------------------	-----------------------------------	--------------------------------------	------------------------------------	-------------------------------------

SCHEMATIC	PS 2 203 FT 120+00 to 122+03 to 122+03	PS 3 117 FT 123+20 to 123+20	PS 2 1333 FT 123+20 to 136+53	PS 3 7 FT 136+53 to 136+60	PS 2 1406 FT 136+60 to 150+66	PS 3 8 FT 150+66 to 150+74	155+73 TEST LEAD 156+74 TEST LEAD	PS 2 2564 FT 150+74 to 176+38	PS 3 44 FT 176+38 to 176+82	PS 2 318 FT 176+82 to 180+00
-----------	--	------------------------------------	-------------------------------------	----------------------------------	-------------------------------------	----------------------------------	--------------------------------------	-------------------------------------	-----------------------------------	------------------------------------



This drawing and its inputs are the property of ONEOK NGL Pipelines, LP. This drawing is being lent, not sold to the recipient. In consideration of the loan of this drawing, the borrower agrees that the drawing will not be reproduced, copied, sold, loaned or otherwise disposed of directly or indirectly, nor used for any purpose other than for which the drawing is specifically furnished. This drawing is being provided to the borrower solely for the purposes of the borrower's confidential use in the planning and preparedness for emergency or other planning purposes. This copy is uncontrolled and is valid only at the time of printing.

**Bakken System
INDEX 10591**

(10591) Targa Lateral 8in FROM 120+00 TO 180+00 TOTAL PIPE LENGTH = 6000 FEET	
FILE: AI-10574-10591-ASMap-B-3	
SHEET CREATION DATE: 3/19/2015 2:17:15 PM	
UTM - 1983 Zone 13	SCALE: 1 IN = 500 FT
BandDef_MPL_B.xml	SHEET 3 OF 11