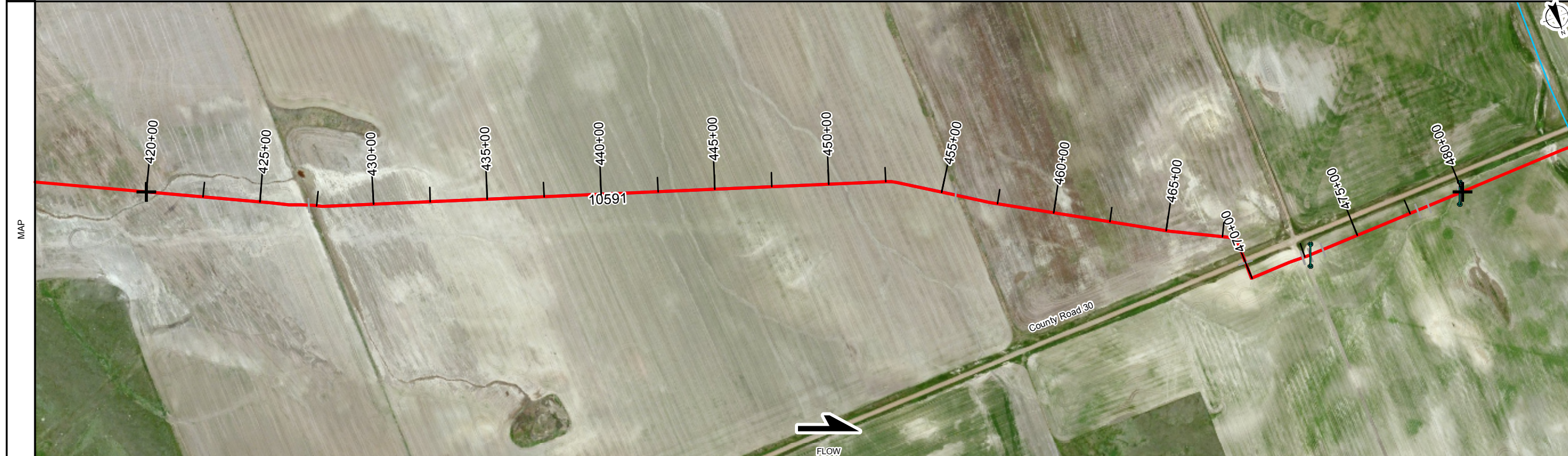


OWNERSHIP	NDMK.TGL.013.00 LARRY W. OLSON & CLIFFORD OLSON 1966 FT or 119.15 RODS 420+00 to 427+17	NDMK.TGL.012.00 STUART TIFFT, TRUSTEE, TIFFT FAMILY IRREVOCABLE TRUST 2846 FT or 172.48 RODS 427+17 to 455+63	NDMK.TGL.011.00 SHARON BRATCHER 1362 FT or 82.55 RODS 455+63 to 469+25	NDMK.TGL.006.00 JACKIE O. & CHARLEEN M. HEDSTROM 314 FT or 19.03 RODS 469+25 to 472+39	NDMK.TGL.005.10 JACKIE O. & CHARLEEN M. HEDSTROM 2271 FT or 137.64 RODS 472+39 to 480+00
-----------	---	---	--	--	--

SERIES INDEX 10591 ROUTE ID 1286 SERIES 1000 - 420+00 TO 480+00

PIPELINE STATIONING	420+00 MATCH LINE	427+17 PROPERTY LINE	455+63 PROPERTY LINE	469+25 SECTION 7, T149N-R99W 469+25 PROPERTY LINE	472+39 SECTION 12, T149N-R100W 472+39 PROPERTY LINE	472+75 CL RESERVATION TELEPHONE FIBER OPTIC CABLE 473+35 TOP OF PIPE	477+87 DITCH, DRAW, WASH 478+38 DITCH, DRAW, WASH 479+86 TOP OF PIPE 479+86 CL RESERVATION TELEPHONE COOP UG TELEPHONE LINE	480+00 MATCH LINE
---------------------	-------------------	----------------------	----------------------	---	---	--	---	-------------------

COUNTY McKenzie County, North Dakota
 PLS T 149 N R 99 W SEC 18
 HCA RESERVED FOR - COULD AFFECT HCA SEGMENT DETAIL



LEGEND	
	AIR MARKER
	BEND
	BOND LEAD
	CASING
	COATING CHANGE
	COMMUNICATION CROSSING
	DIG
	EQUATION
	FENCE
	GROUND BED
	LAUNCHER/RECEIVER
	NATURAL GROUND
	POINT OF INTERSECTION (PI)
	PIPE CROSSING
	PIPE SEGMENT CHANGE
	POWER LINE CROSSING
	RAILROAD CROSSING
	RECTIFIER
	RIVER WEIGHT ROAD CROSSING
	STOPPOLE TEE
	TAP/ TOR
	TEST LEAD
	VALVE MAIN LINE
	VALVE CHECK
	WATERWAY
	STATION - ACTIVE
	STATION - INACTIVE
	HCA

PIPE SPECIFICATIONS	
NO.	DESCRIPTION
2	8.625" O.D. X .188" W.T., API-5L_X52
3	8.625" O.D. X .219" W.T., API-5L_X52

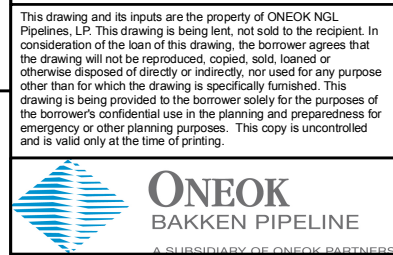
COATING SPECIFICATIONS	
NO.	DESCRIPTION
40	Coating - EPOXY - FBE

REFERENCE DRAWINGS	
NO.	TITLE

GENERAL INFORMATION	
TOPIC	COMMENT

REVISIONS				
NO.	DESCRIPTION	BY	CKD	DATE
1.01	3/19/15	JMR	JMR	3/15
1.00	3/18/2015	JMR	JMR	3/15

This drawing and its inputs are the property of ONEOK NGL Pipelines, LP. This drawing is being lent, not sold to the recipient. In consideration of the loan of this drawing, the borrower agrees that the drawing will not be reproduced, copied, sold, loaned or otherwise disposed of directly or indirectly, nor used for any purpose other than for which the drawing is specifically furnished. This drawing is being provided to the borrower solely for the purposes of the borrower's confidential use in the planning and preparedness for emergency or other planning purposes. This copy is uncontrolled and is valid only at the time of printing.



**Bakken System
INDEX 10591**

(10591) Targa Lateral 8in
FROM 420+00 TO 480+00
TOTAL PIPE LENGTH = 6000 FEET

FILE: AI-10574-10591-ASMap-B-9

SHEET CREATION DATE: 3/19/2015 2:21:02 PM

UTM - 1983 Zone 13 SCALE: 1 IN = 500 FT

BandDef_MPL_B.xml SHEET 9 OF 11

COATING	CS 40 643 FT 420+00 to 426+43	CS 40 43 FT 426+43 to 426+86	CS 40 4123 FT 426+86 to 468+09	CS 40 2 FT 468+09 to 468+11	CS 40 53 FT 468+11 to 468+64	CS 40 112 FT 468+64 to 469+76	CS 40 20 FT 469+76 to 469+96	CS 40 3 FT 469+96 to 469+99	CS 40 194 FT 469+99 to 471+93	CS 40 67 FT 471+93 to 472+60	CS 40 479 FT 472+60 to 477+39	CS 40 180 FT 477+39 to 479+19	CS 40 81 FT 479+19 to 480+00
---------	-------------------------------------	------------------------------------	--------------------------------------	-----------------------------------	------------------------------------	-------------------------------------	------------------------------------	-----------------------------------	-------------------------------------	------------------------------------	-------------------------------------	-------------------------------------	------------------------------------

SCHEMATIC	PS 2 643 FT 420+00 to 426+43	PS 3 43 FT 426+43 to 426+86	PS 2 4123 FT 426+86 to 468+09	PS 3 2 FT 468+09 to 468+11	PS 2 53 FT 468+11 to 468+64	PS 3 112 FT 468+64 to 469+76	PS 2 20 FT 469+76 to 469+96	PS 3 3 FT 469+96 to 469+99	PS 2 194 FT 469+99 to 471+93	PS 3 67 FT 471+93 to 472+60	PS 2 479 FT 472+60 to 477+39	PS 3 180 FT 477+39 to 479+19	PS 2 81 FT 479+19 to 480+00
-----------	------------------------------------	-----------------------------------	-------------------------------------	----------------------------------	-----------------------------------	------------------------------------	-----------------------------------	----------------------------------	------------------------------------	-----------------------------------	------------------------------------	------------------------------------	-----------------------------------

