
Targa Badlands

New Town to Stanley Pipeline: Tree and Shrub Planting Report 2015

ND PSC Case Number: PU-14-625

October 2015

Prepared for:
Targa Badlands LLC



1000 Louisiana Street
Suite 4300
Houston, TX 77002

Prepared by:



107 West Main Avenue, Suite 325
Bismarck, ND 58501

Contents

1.0	Introduction and Regulatory Background	1
2.0	Inventory of Trees and Shrubs in the Project Area.....	1
3.0	Landowner Consultation.....	1
4.0	Planting Schedule.....	2

List of Tables

Table 1.	New Town to Stanley Tree and Shrub Replacement	4
----------	--	---

List of Figures

Figure 1.	Overview of Tree and Shrub Planting Locations.....	A-2
Figure 2.	Tree and Shrub Planting Locations: Stanley Cemetery/Dog Park.....	A-3
Figure 3.	Tree and Shrub Planting Locations: Lahti	A-4
Figure 4.	Tree and Shrub Planting Locations: Ness.....	A-5
Figure 5.	Tree and Shrub Planting Locations: Locken	A-6
Figure 6.	Tree and Shrub Planting Locations: Littlefield	A-7
Figure 7.	Tree and Shrub Planting Locations: Pennington.....	A-8
Figure 8.	Tree and Shrub Planting Locations: Lahtinen	A-9
Figure 9.	Tree and Shrub Planting Locations: State of North Dakota.....	A-10
Figure 10.	Tree and Shrub Planting Locations: Moe.....	A-11
Figure 11.	Tree and Shrub Planting Locations: Targa Badlands LLC.....	A-12
Figure 12.	Tree and Shrub Planting Locations: City of New Town.....	A-13

Appendices

Maps of Project Area and Planting Locations.....	Appendix A
Photos of Tree Plantings.....	Appendix B
Nursery Stock Inspection Certificates.....	Appendix C
Landowner Correspondence.....	Appendix D
Public Service Commission Correspondence.....	Appendix E

1.0 Introduction and Regulatory Background

The New Town to Stanley Pipeline Project (the Project) was completed in 2014 in Mountrail County, North Dakota, within portions of Township 152N, Range 92W; Township 153N, Range 91W; Township 154N, Range 91W; Township 155N, Range 91W; and Township 156N, Range 91W (see Appendix A, Figure 1). The Project is operated by Targa Badlands LLC (Targa), and is comprised of two terminals with storage tanks and an underground pipeline for the transport and storage of crude petroleum. The length of the pipeline is 167,371 feet (31.70 miles). At the origin of the pipeline, near New Town, the facility has a 30,000-barrel-capacity tank. At the terminus, near Stanley, the facility has a 25,000-barrel-capacity tank. The Project is under the jurisdiction of the North Dakota Public Service Commission (PSC). The New Town to Stanley Pipeline construction required the removal of trees and shrubs within Project right-of-way (ROW).

Targa retained Lowham Walsh, LLC to assist in the preparation of a tree and shrub replacement plan for the New Town to Stanley Pipeline Project.

The PSC approved the *Tree and Shrub Replacement Plan* for this Project in 2015. This planting report documents the number, species, location, and date of installation for the trees and shrubs for this Project. Please refer to the *Tree and Shrub Replacement Plan* for further background details.

2.0 Inventory of Trees and Shrubs in the Project Area

The total number of trees and shrubs removed for the Project was estimated to be 75 individuals located on 11 different land ownership parcels; the total number to be replaced was 150 based on the 2:1 replacement requirement. Targa opted to replace the trees at a ratio of 2.2:1 in anticipation of potential tree or shrub mortality during the three-year monitoring period. At the end of three years, 75% of the required 150 trees to be replaced, or 113, will be required to have survived to meet the obligations to the PSC.

3.0 Landowner Consultation

Each of the 11 landowners was contacted by the Targa Land Group via telephone and email. Each landowner was asked whether they preferred trees to be replaced on their property off the Project right-of-way, or whether they preferred not to have trees replaced on their property and instead have trees planted at an alternative location or donated to local communities or state departments. If the landowners opted for replacement of trees and shrubs, the tree or shrub species used for replacement were determined through consultation with the state forester.

Eight of the 11 landowners in the Project Area requested replacement on their property. One of

these landowners, Michael Littlefield, requested that the trees and shrubs be dropped off at his property to be planted at his discretion and later have the monitoring coordinates and pictures taken by Lowham Walsh.

Three of the 11 landowners waived replacement of trees and shrubs on their property. One landowner, Douglas Kinnoin, preferred to waive tree replacement; at Mr. Kinnoin's request, trees were donated to and planted on the Stanley City Cemetery/Dog Park grounds. The other landowners, Sherri Reynolds and Tara Salute, were initially unresponsive to correspondence. In a telephone conversation between Ms. Reynolds and Travis Tucker of Targa, Ms. Reynolds verbally waived replacement of trees on their property, requesting that replacement trees be donated to the city of New Town, North Dakota. These trees were planted in an urban housing project in the city.

Lowham Walsh discussed tree and shrub removal from State Trust Land with Mr. Mike Haupt and learned that North Dakota Department of State Trust Lands employees may not sign any documents, or provide any items as gifts, except to another state agency or department. Mr. Haupt suggested donation of the four silver buffaloberry (*Shepherdia argentea*) shrubs to the North Dakota Department of Game and Fish, and suggested Kent Luttschwager as a point of contact. A discussion with Mr. Luttschwager resulted in a rapid agreement to plant four buffaloberry bushes on the Van Hook Wildlife Management Area property, southeast of New Town.

Lowham Walsh contacted Michael Littlefield to make arrangements to obtain Global Positioning System (GPS) coordinates and photograph the shrubs planted on his property, but discovered that the shrubs had not been planted. Lowham Walsh then volunteered to plant the trees for Mr. Littlefield in a location of his choice. Lowham Walsh associates then planted the shrubs in a pasture owned by Mr. Littlefield and recorded the GPS coordinates and photographed the shrubs.

Trees and shrubs were supplied by TC Nursery in Burlington, North Dakota, and are described in the *Tree and Shrub Replacement Plan* for the Project. Tree and shrub plantings were coordinated with TC Nursery. Trees were three to four-year-old saplings (24 to 48 inches in size). Trees obtained by TC Nursery were inspected and found to be free from injurious insects and plant diseases. The inspection certificates from the shipping nurseries can be found in Appendix C. A total of 163 trees were planted, which differs from 165 described in the *Tree and Shrub Replacement Plan*. The difference is due to a math error in summing all the trees and shrubs in the *Tree and Shrub Replacement Plan*. The tree and shrub count actually planted matches the line list of trees and shrubs in the *Tree and Shrub Replacement Plan*.

4.0 Planting Schedule

The *Tree and Shrub Replacement Plan* for the Project stated that the installation of all plantings

would occur on or before August 11, 2015. However, the plantings for only eight landowners were installed on August 11 because a portion of the replacement trees became ill at the nursery and lack of landowner response and coordination. Subsequently, trees for the Moe, Littlefield, and Reynolds properties were planted on September 24 and September 30, 2015. Due to the unavailability of downy hawthorn (*Crataegus mollis*) trees so late in the summer, a substitution of 37 Canada red chokecherry (*Prunus virginiana* 'Shubert') was made for the hawthorns originally planned to be installed on the Moe property.

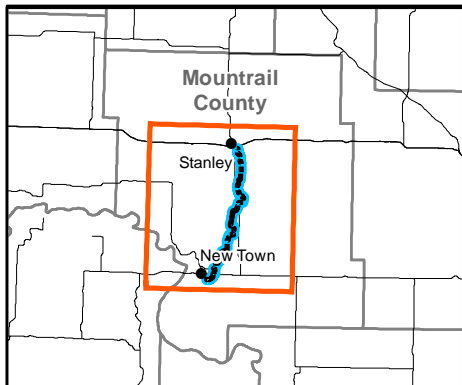
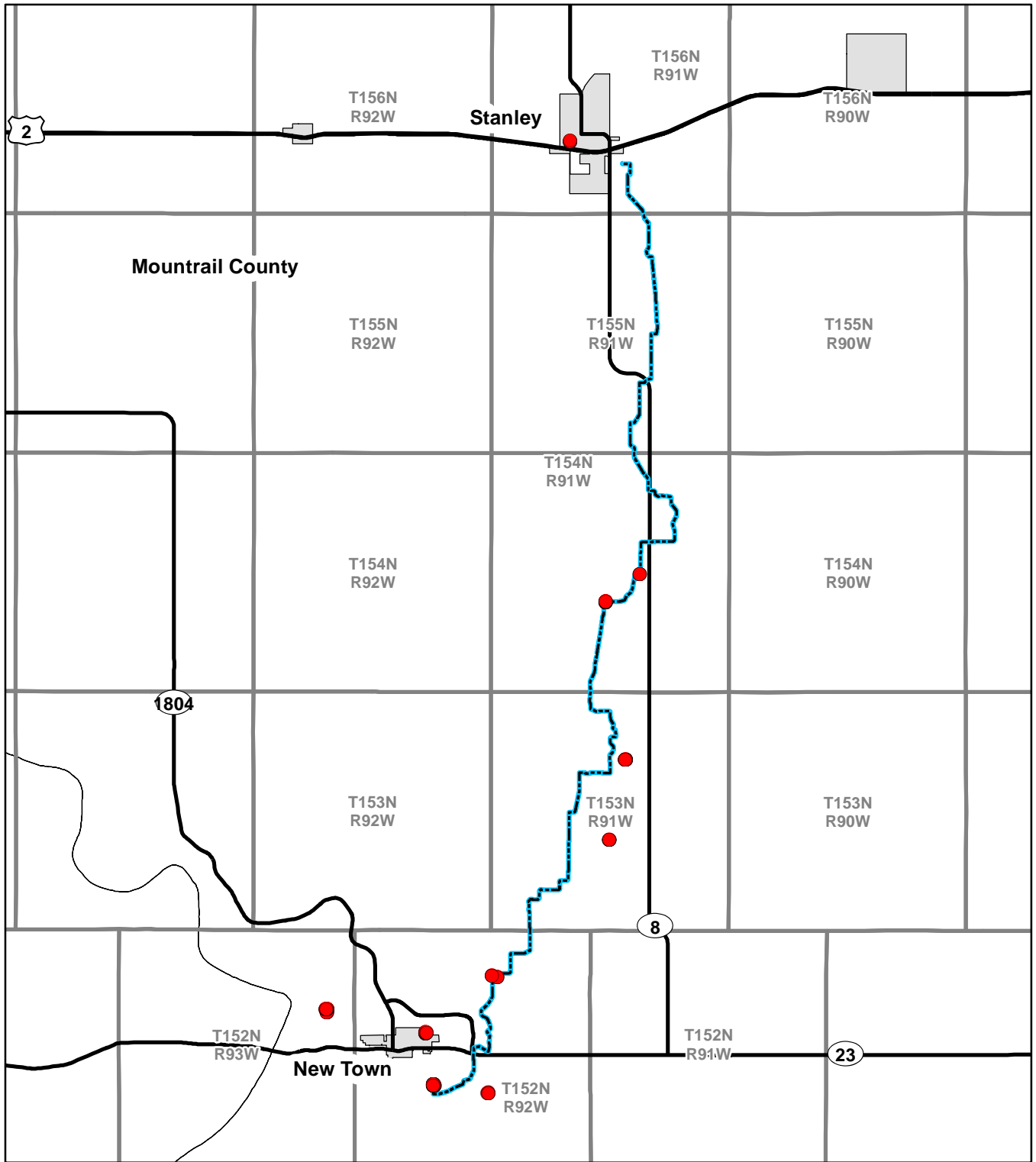
The plantings for eight landowners were installed August 11, 2015, by TC Nursery in the locations listed in Table 1 and shown in Figure 2. The final three plantings were installed on September 24 and September 30, 2015, by TC Nursery and Lowham Walsh.

Two of the 11 planting locations, for the Lahti and Pennington properties were incorrect due to miscommunications between the property owners and Targa. On September 9, 2015, Lowham Walsh made a trip to the Project Area to relocate these shrubs to the correct locations. GPS coordinates were updated on September 24, 2015, to show their current correct locations. Maps of each planting location highlighting individual trees can be found in Appendix A.

Table 1. New Town to Stanley Tree and Shrub Replacement

Landowner	Recipient	Number of Replacements Allotted	Number of Replacements Planted	Tree/Shrub Species Planted	Date Planted	Section, Township Range	Landowner Action	Photo References (Appendix B)
Douglas Kinnoin	Stanley Cemetery/Dog Park	7	7	Downy Hawthorn	8/11/2015	S28, T156N, R91W	Donated	B.1-1 – B.1-3
Mike and Julene Lahti	Mike and Julene Lahti	4	4	Buffaloberry	8/11/2015	S22, T154N, R91W	Replanted	B.2-1 – B.2-2
Paul Ness	Paul Ness	15	15	Buffaloberry	8/11/2015	S21, T154N, R91W	Replanted	B.3-1
Darryl and Pam Locken	Darryl and Pam Locken	26	26	Green Ash	8/11/2015	S10, T153N, R91W	Replanted	B.4-1 – B.4-2
Michael and Steven Littlefield	Michael and Steven Littlefield	9	9	Buffaloberry	Dropped off 8/11/15 Planted 9/24/15	S21, T153N, R91W	Dropped off at residence, Planted by Lowham Walsh.	B.5-1
Jack and Karen Pennington	Steve Pennington	7	7	Buffaloberry	8/11/2015	S10, T152N, R92W	Replanted	B.6-1 – B.6-2
Gary and Sylvia Lahtinen	Nathan Lahtinen	4 2	4 2	Green Ash Canada red Chokecherry	8/11/2015	S22, T152N, R92W	Replanted	B.7-1 – B.7-4
State of North Dakota	North Dakota, Department of Game and Fish	4	4	Buffaloberry	8/11/2015	S3, T151N, R92W	Donated	B.8-1
Ardell and Mavis Moe	Ardell and Mavis Moe	37	37	Canada red Chokecherry	9/30/2015	S12, T152N, R93W	Replanted	B.9-1 – B.9-3
Targa Badlands LLC	Targa Badlands LLC	35	35	Downy Hawthorn	7/17/2015	S21, T152N, R92W	Replanted	B.10-1 – B.10-2
Sherri Reynolds and Tara Salute	City of New Town	13	13	Green Ash	9/24/2015	S17, T152N R92W	Donated	B.11-1 – B.11-3
TOTAL		163	163					

Appendix A: Maps of Project Area and Planting Locations



Legend

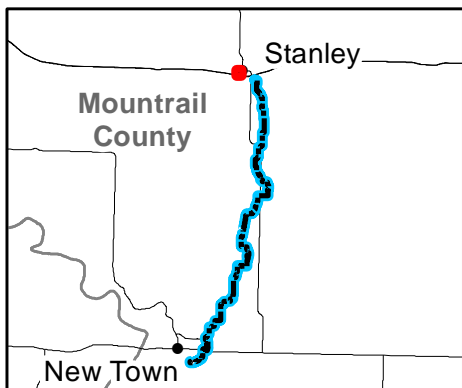
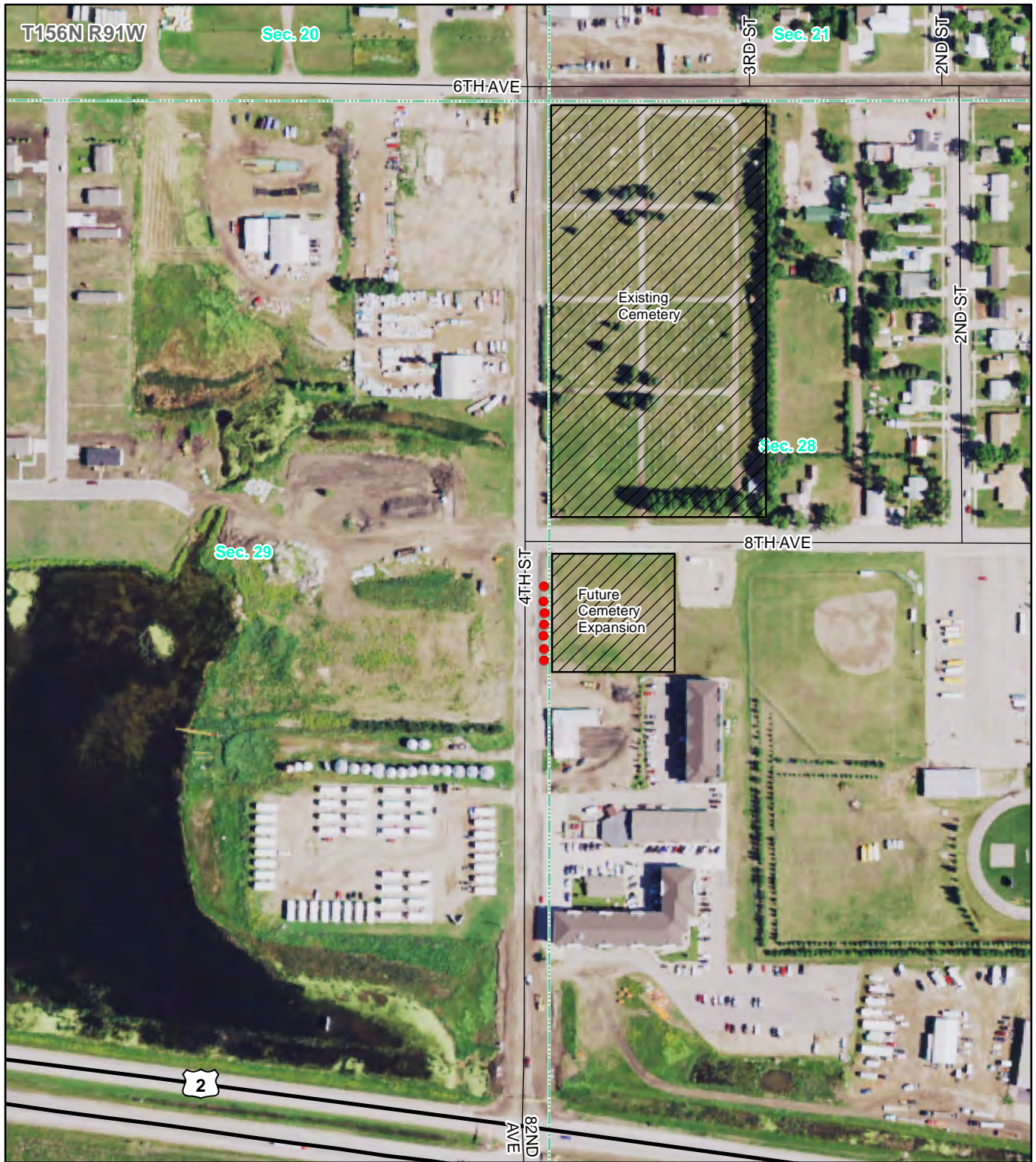
- Tree Planting Locations
- New Town to Stanley Pipeline
- ▭ City Boundaries
- Roads
- ▭ Townships

NORTH



Figure 1
Overview of Tree and Shrub
Planting Locations

Mountrail County, North Dakota
 October 2015



Legend

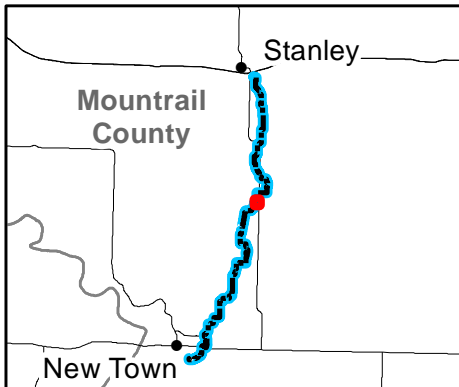
- Tree Planting Locations
- New Town to Stanley Pipeline
- Roads
- Sections
- Townships

NORTH



Figure 2
Tree and Shrub Planting Locations:
Stanley Cemetery/Dog Park
 Mountrail County, North Dakota
 October 2015

LOWHAM WALSH LLC
 Engineering & Environmental Services



Legend

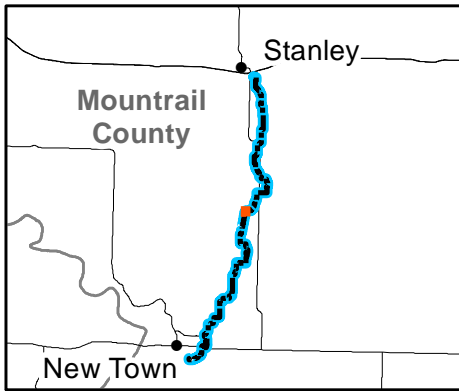
- Tree Planting Locations
- New Town to Stanley Pipeline
- Roads
- Sections
- Townships

NORTH

0 500 Feet

Figure 3
Tree and Shrub Planting Locations: Lahti
 Mountrail County, North Dakota
 October 2015





Legend

- Tree Planting Locations
- New Town to Stanley Pipeline
- Roads
- Sections
- Townships

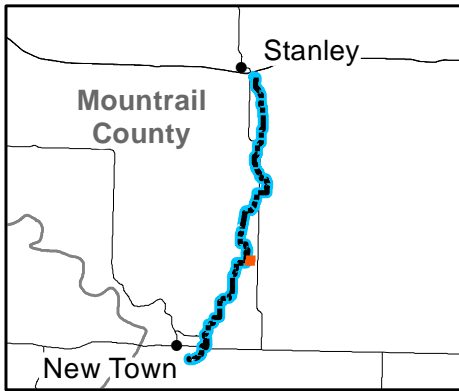
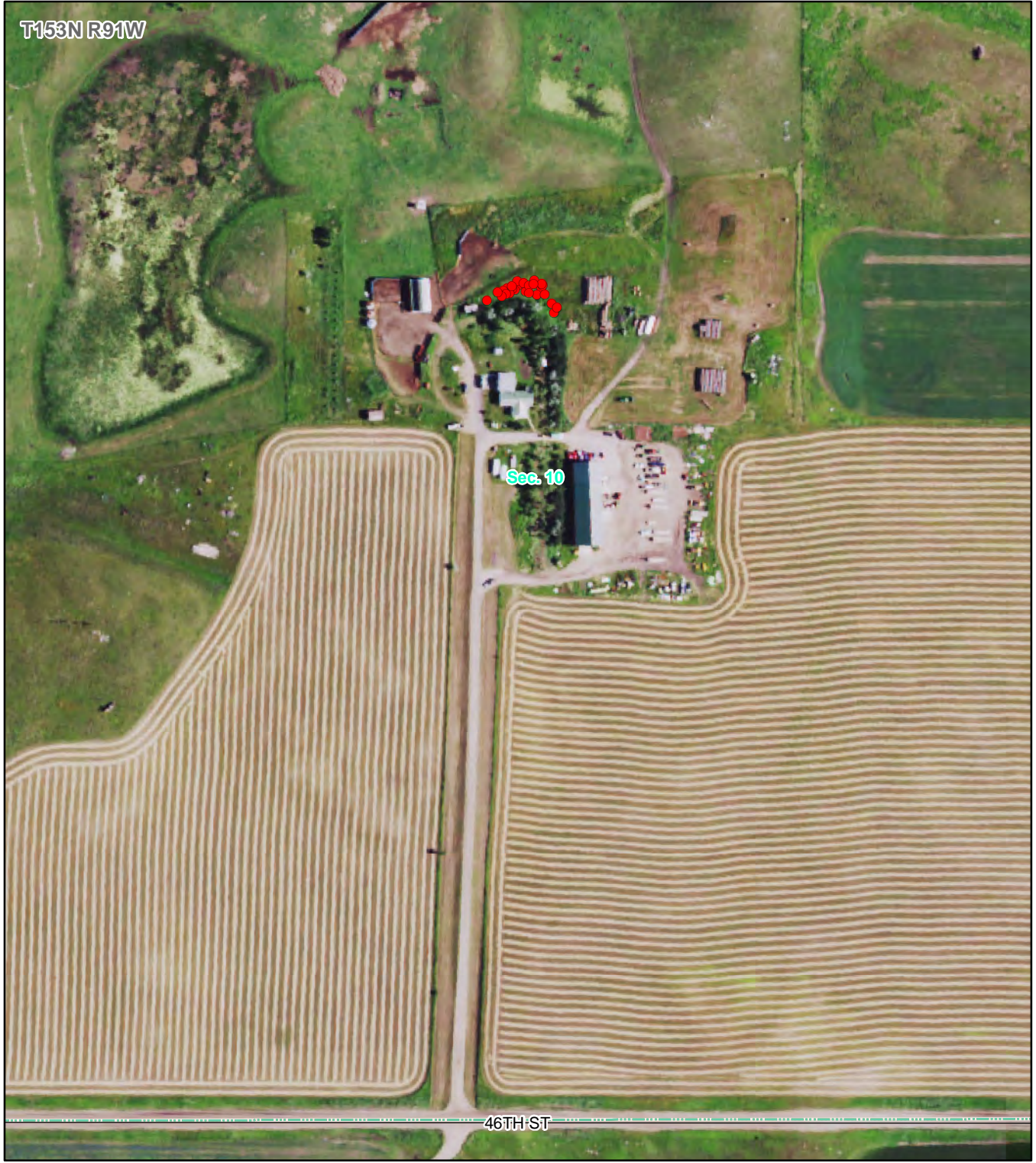
NORTH

0 500 Feet

Figure 4
Tree and Shrub Planting Locations: Ness
 Mountrail County, North Dakota
 October 2015



Data Sources: NDGS 2012, USCB Tiger/Line 2014, USDA NAIP 2014



Legend

- Tree Planting Locations
- New Town to Stanley Pipeline
- Roads
- ▭ Sections
- ▭ Townships

NORTH

0 500 Feet

Figure 5
Tree and Shrub Planting
Locations: Locken
 Mountrail County, North Dakota
 October 2015



Data Sources: NDGS 2012, USCB Tiger/Line 2014, USDA NAIP 2014

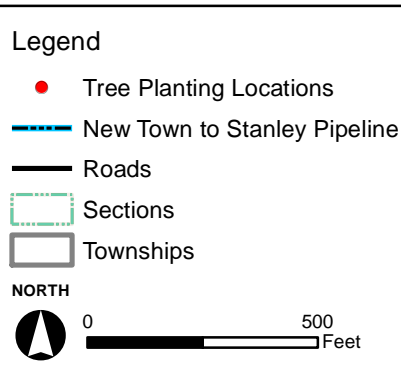
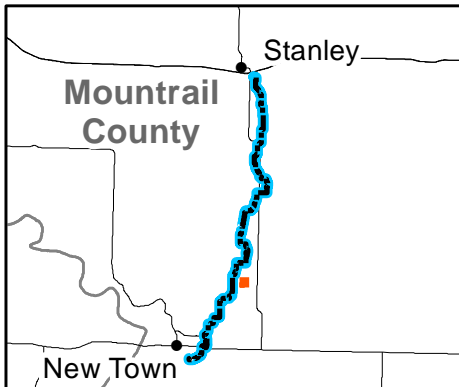
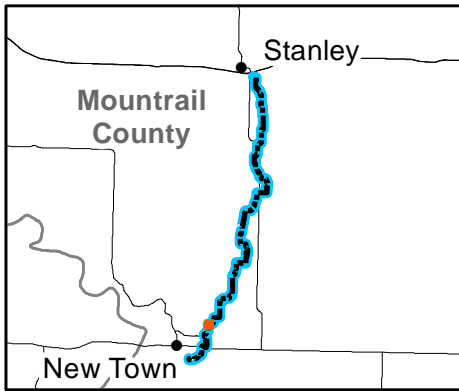
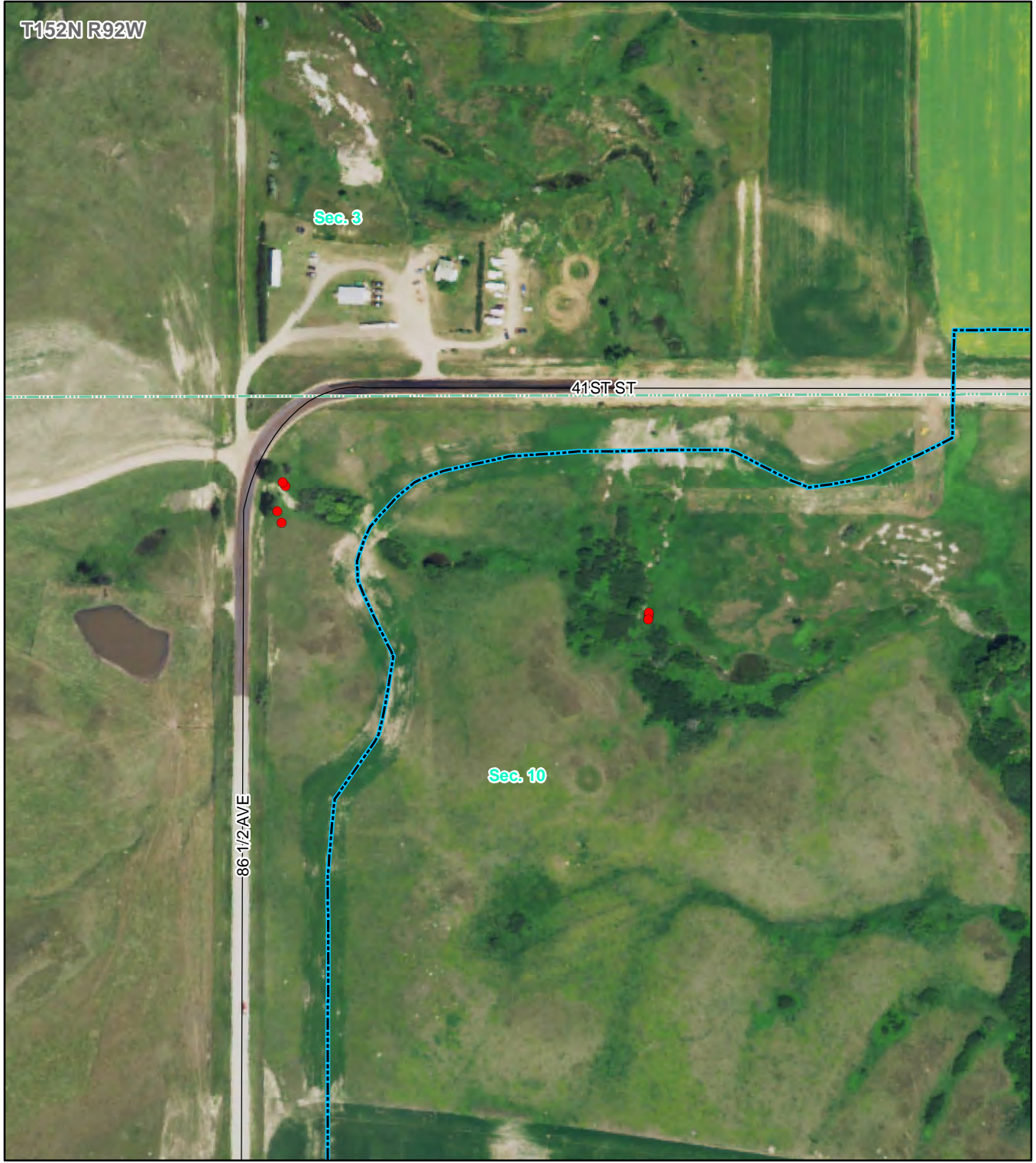


Figure 6
Tree and Shrub Planting
Locations: Littlefield
 Mountrail County, North Dakota
 October 2015



Data Sources: NDGS 2012, USCB Tiger/Line 2014, USDA NAIP 2014



Legend

- Tree Planting Locations
- New Town to Stanley Pipeline
- Roads
- Sections
- Townships

NORTH

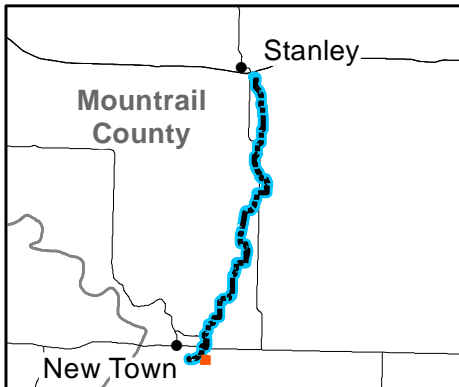
0 500 Feet

Figure 7
Tree and Shrub Planting Locations: Pennington
 Mountrail County, North Dakota
 October 2015



Data Sources: NDGS 2012, USCB Tiger/Line 2014, USDA NAIP 2014

T152N R92W



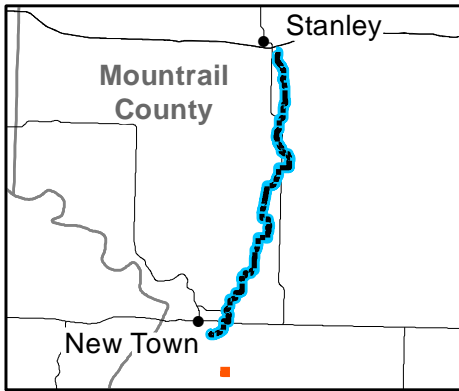
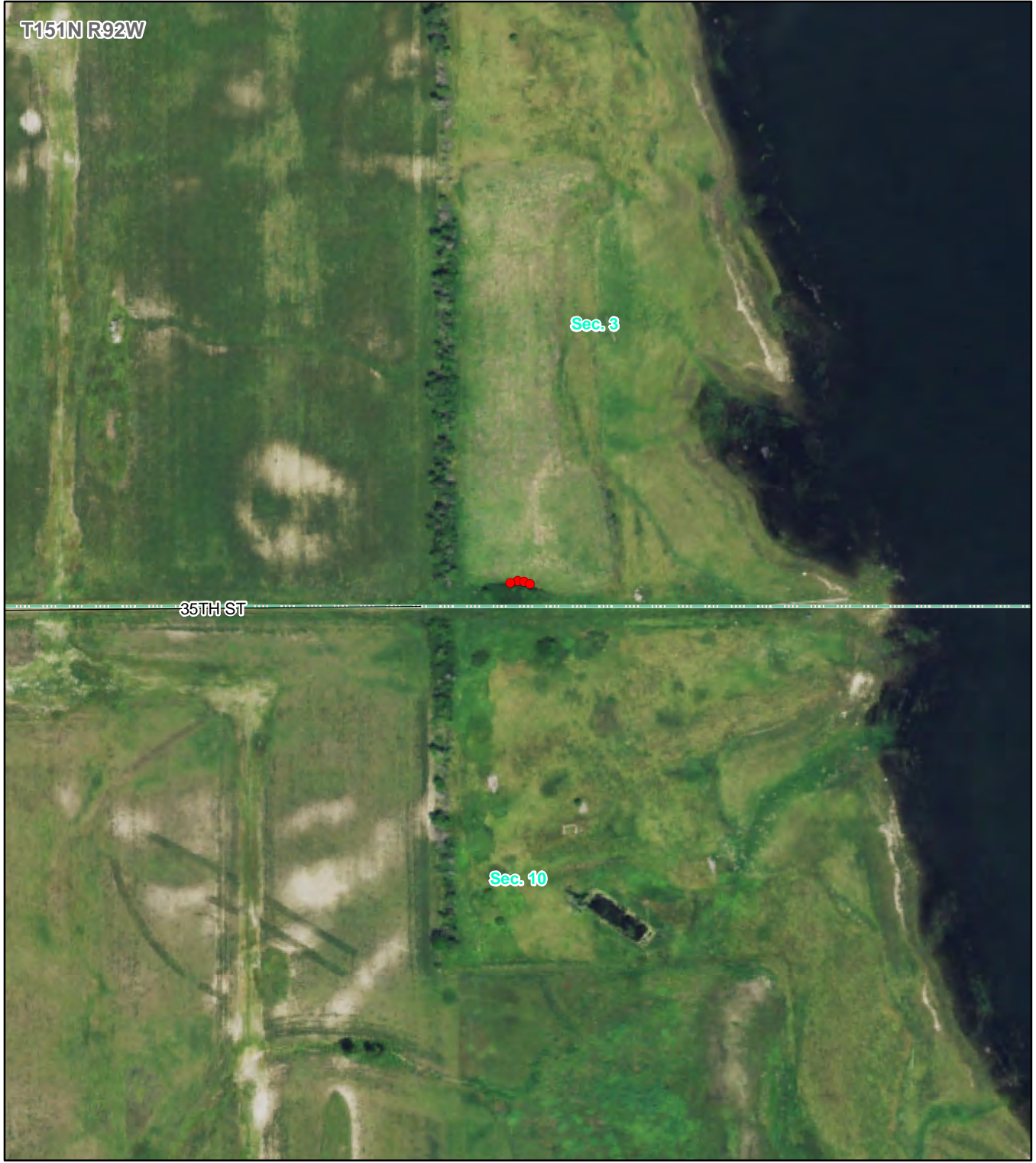
Legend

- Tree Planting Locations
- New Town to Stanley Pipeline
- Roads
- Sections
- Townships



Figure 8
**Tree and Shrub Planting
Locations: Lathinen**
Mountrail County, North Dakota
October 2015





Legend

- Tree Planting Locations
- New Town to Stanley Pipeline
- Roads
- Sections
- Townships

NORTH

0 500 Feet

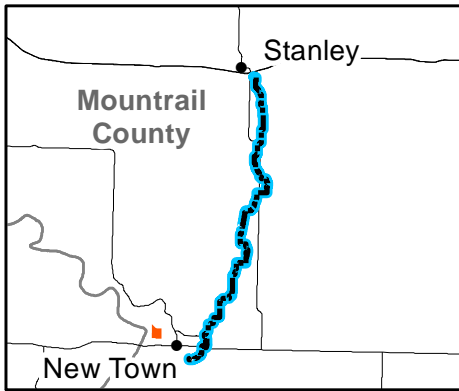
Figure 9
Tree and Shrub Planting
Locations: State of
North Dakota

Mountrail County, North Dakota
 October 2015



Data Sources: NDGS 2012, USCB Tiger/Line 2014, USDA NAIP 2014

T152N R93W



Legend

- Tree Planting Locations
- New Town to Stanley Pipeline
- Roads
- Sections
- Townships

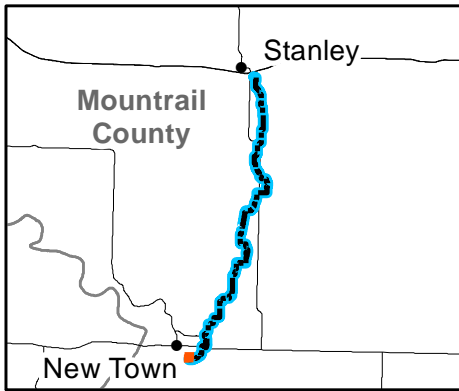
NORTH

0 500 Feet

Figure 8
Tree and Shrub Planting Locations: Moe
 Mountrail County, North Dakota
 October 2015



Data Sources: NDGS 2012, USCB Tiger/Line 2014, USDA NAIP 2014



Legend

- Tree Planting Locations
- New Town to Stanley Pipeline
- Roads
- Sections
- Townships

NORTH

0 500 Feet

Figure 11
Tree and Shrub Planting
Locations: Targa Badlands LLC
 Mountrail County, North Dakota
 October 2015



Data Sources: NDGS 2012, USCB Tiger/Line 2014, USDA NAIP 2014

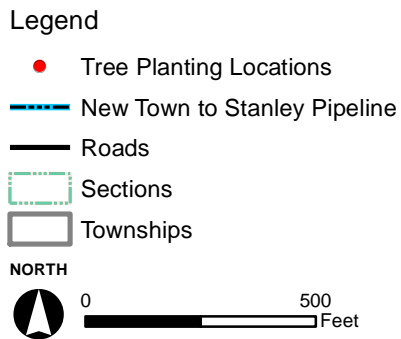
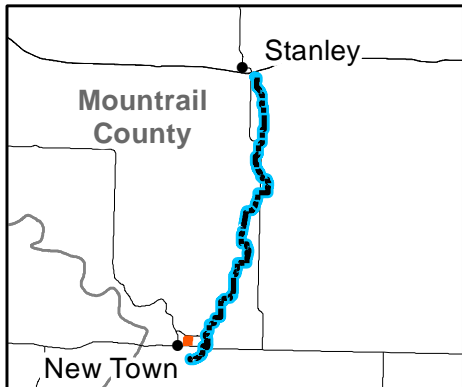


Figure 12
Tree and Shrub Planting
Locations: City of New Town
 Mountrail County, North Dakota
 October 2015



Appendix B: Photos of Tree Plantings

B.1 Stanley City Cemetery/Dog Park Planting Photos



Photo B.1-1 TC Nursery Employees preparing planting locations at the Stanley cemetery/dog park.



Photo B.1-2 An example of the seven downy hawthorn planted at the Stanley cemetery/dog park.



Photo B.1-3 An example of one of the seven downy hawthorn planted at the Stanley cemetery/dog park.

B.2 Lahti Property Planting Photos



Photo B.2-1 Overview of the buffaloberry shrubs planted on the Lahti property.



Photo B.2-2 An example of one of the four buffaloberry shrubs planted on the Lahti property.

B.3 Ness Property Planting Photos



Photo B.3-1 An example of one of the 15 buffaloberry shrubs planted on the Ness property.

B.4 Locken Property Planting Photos



Photo B.4-1 An example of one of the 26 green ash trees planted on the Locken property.



Photo B.4-2 Another example of one of the 26 green ash trees planted on the Locken property.

B.5 Littlefield Property Planting Photos



Photo B.5-1 An example of the buffaloberry shrubs planted on the Littlefield property.

B.6 Pennington Property Planting Photos



Photo B.6-1 An example of one of the buffaloberry shrubs planted on the Pennington property.



Photo B.6-2 Another example of one of the buffaloberry shrubs planted on the Pennington property.

B.7 Lahtinen Property Planting Photos



Photo B.7-1 Overview of the trees and shrubs planted on the Lahtinen property.



Photo B.7-2 TC Nursery employees preparing planting locations on the Lahtinen property.



Photo B.7-3 An example of one of the two Schubert chokecherry planted on the Lahtinen property.



Photo B.7-4 An example of one of the four green ash planted on the Lahtinen property.

B.8 State of North Dakota Planting Photos



Photo B.8-1 An example of one of the four buffaloberry planted for the on North Dakota State property because of its removal from North Dakota State Trust Lands.

B.9 Moe Property Planting Photos



Photo B.9-1 An example of Canada red chokecherry planted on the Moe property.



Photo B.9-2 Another example of Canada red chokecherry planted on the Moe property.



Photo B.9-3 Canada red chokecherry planted on the east side of the Moe property.

B.10 Targa Badlands LLC Property Planting Photos



Photo B.10-1 An example of the downy hawthorn trees planted on the Targa Badlands property.



Photo B.10-2 An example of a row of downy hawthorn trees planted on the Targa Badlands property.

B.11 City of New Town Planting Photos



Photo B.11-1 TC Nursery employees in the process of preparing planting locations and planting trees.



Photo B.11-2 An example of the green ash trees planted for the City of New Town.



Photo B.11-3 Another example of the green ash trees planted for the City of New Town.

Appendix C: Nursery Stock Inspection Certificates



Minnesota Department of Agriculture

2015 CERTIFICATE OF COMPLIANCE

US Domestic Japanese Beetle Harmonization Plan: Shipment to Category 2 States

Containerized Nursery Stock

The Minnesota grown nursery stock accompanied by this certificate has been produced, maintained and/or treated by the nursery listed below to comply with the provisions of the **US Domestic Japanese Beetle Harmonization Plan, Shipment to Category 2 States, Containerized Nursery Stock Accreditation Program.**

1. No field soil was used for potting the plants and any plants harvested from the field were bare-rooted prior to containerization.
2. The growing media used in the containers was officially surveyed by MDA and found to pose a minimal risk of containing Japanese beetle larvae.
3. The containerized plants were maintained on an impervious surface.
4. All containers were maintained free of weeds.
5. No grasses or sedges may be certified and shipped using this certificate.
6. Containers destined to Colorado are no larger than 16 inches in diameter.

Any nursery stock that originated from out of the state of Minnesota has been maintained by the nursery in a manner to preclude infestation by Japanese beetle.

BAILEY NURSERIES, INC.
1325 Bailey Road
Newport, Minnesota 55055

This signed certificate is valid only through December 31, 2015 and is subject to revocation at any time by the Minnesota Department of Agriculture.

Geir Friisoe
Director
Plant Protection Division
651-201-6174
Geir.Friisoe@state.mn.us

March 31, 2015

Date

625 Robert St. N., St. Paul, MN 55155-2538 • 651-201-6000 or 1-800-967-2474 • www.mda.state.mn.us

In accordance with the Americans with Disabilities Act, this information is available in alternative forms of communication upon request by calling 651/201-6000. TTY users can call the Minnesota Relay Service at 711 or 1-800-627-3529. The MDA is an equal opportunity employer and provider.



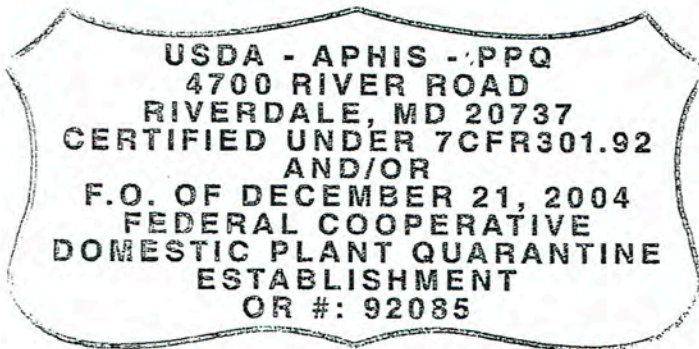
BAILEY

NURSERIES



USDA - APHIS - PPQ Certificate MN - 201 is for 7 CFR 301.50, Pine Shoot Beetle Quarantine.

USDA - APHIS - PPQ Certificate MN - 210 is for 7 CFR 301.38, Black Stem Rust Quarantine (Berberis, Mahoberberis, and Mahonia plants).



USDA - APHIS - PPQ Certificate OR-92085 is for 7 CFR 301.92 Host and associated host of *Phytophthora Ramurum*

- RUSH - PERISHABLE

NURSERY STOCK

Protect from Heat and Frost

MINNESOTA DEPARTMENT OF AGRICULTURE
DIVISION OF PLANT INDUSTRY
CERTIFICATE OF NURSERY INSPECTION

CERTIFICATE #0193917

This is to certify that the General Nursery Stock and Premises of the
BAILEY NURSERIES INC.
1325 Bailey Road, St. Paul, Minnesota 55119
have been inspected and found apparently free from dangerously injurious insects and plant diseases

Inspection Date

THIS CERTIFICATE VOID AFTER 12/2015

DAVE FREDERICKSON Commissioner
625 Robert St. N. • St. Paul, Minnesota 55155
MVP - BN - PMS/4075



FROM: LAWYER NURSERY, INC.
950 HIGHWAY 200 WEST
PLAINS, MONTANA 59859-9706 U.S.A.
(406) 826-3881

ORDER NO. _____

BOX _____ **OF** _____

WT. _____

SHIP TO: _____

State of Montana
Department of Agriculture
Agricultural Sciences Division
Helena, MT 59620

NURSERY STOCK INSPECTION CERTIFICATE

The contents of the shipment or the nursery from which same were shipped have been inspected and found apparently free from injurious insects and plant diseases.

MONTANA
DEPARTMENT OF AGRICULTURE
INSPECTED
PASSED
AGRICULTURE SCIENCES DIVISION
Inspection Stamp

Appendix D: Landowner Correspondence



Engineering & Environmental Services

107 West Main Avenue
Suite 325
Bismarck, ND 58501

July 10, 2015

Cassie Fjeldahl
Parks and Recreation Director
P.O. Box 901
Stanley, ND 58784

Re: New Town to Stanley Pipeline Tree & Shrub Replacement

Dear Ms. Fjeldahl,

During our recent conversation concerning donation of seven (7) Downy Hawthorn trees to the City of Stanley, you indicated that the City would be willing to accept such a donation and that your preferred location for planting of the trees would be the Stanley City Cemetery. Our client, Targa Badlands LLC, will provide the trees and also pay for planting of the trees at locations to be indicated by yourself, or a suitable agent representing the City of Stanley.

If you would be kind enough to indicate acceptance of this donation and simultaneously provide permission to plant the trees, please sign this document at the bottom of the page. The exact location of planting can be determined at a later date, but is dependent upon accessibility of the location by equipment and work crews.

Please contact me at any time with further questions at 701-258-5166 or by email at ppansegrau@lowhamwalsh.com.

Sincerely,

Paul D. Pansegrau
North Dakota Operations Manager

I acknowledge that accepting donation of seven (7) Downy Hawthorn trees, to be planted at the Stanley City Cemetery at locations to be determined.

A handwritten signature in black ink that reads 'Cassie Fjeldahl'.

Cassie Fjeldahl
Director, Parks and Recreation
City of Stanley, North Dakota

A handwritten date in black ink that reads 'July 13, 15'.

Date



107 West Main Avenue, Suite 325
Bismarck, ND 58501

August 11, 2015

Ardell Moe
950 40th Street NW
New Town, ND 58763

Re: New Town to Stanley Pipeline Tree & Shrub Replacement

Dear Mr. Moe,

In association with the construction of the New Town to Stanley Crude Oil Pipeline Project owned by Targa Badlands LLC ("Targa"), trees and/or shrubs required removal from your property. According to the requirements set forth by the North Dakota Public Service Commission, Targa has a responsibility to replace any trees or shrubs removed for pipeline construction at a ratio of two for every one tree or shrub removed that meets the necessary criteria. Location of the replacement trees and shrubs on the landowner's property must be chosen in consultation with landowner preference.

According to the inventory prepared following removal of trees and shrubs for the New Town to Stanley Crude Oil Pipeline, Targa recorded that 17 trees were removed from your land in Section 21 of Township 152 North, Range 92 West. It has very recently come to our attention that you desire the trees to be replaced at a different property that you own located in Section 12 of Township 152 North, Range 93 West.

We ask that you acknowledge this change of location by signing below. Additionally, by signing below, you agree to grant access for Targa representatives to enter your property in Section 12 of Township 152 North, Range 93 West for the purpose of planting the replacement trees, as well as access each September for the following three years so that progress and condition of the trees may be monitoring and reported, as required by the North Dakota Public Service Commission.

In addition, also wish to change the trees we will be planting from Hawthorn to Canadian Choke Cherry. Therefore, a total of 37 Canadian Choke Cherry trees will be planted at the property described above.

If you should have any further questions, please contact me at 701-258-5166 or by email at ppansegrau@ene.com.

Sincerely,

Paul D. Pansegrau

Acknowledged and agreed:

Ardell Moe

Ardell Moe

Date



107 West Main Avenue
Suite 325
Bismarck, ND 58501

September 28, 2015

Willie LaDue
City Foreman
P.O. Box 309
New Town, ND 58763

Re: New Town to Stanley Pipeline Tree & Shrub Replacement

Dear Mr. LaDue

During our recent conversation concerning donation of thirteen (13) Green Ash trees to the City of New Town, you indicated that the City would be willing to accept such a donation and that your preferred location for planting of the trees would be a City Housing project. Our client, Targa Badlands LLC, will provide the trees and also pay for planting of the trees at locations to be indicated by yourself, or a suitable agent representing the City of New Town.

If you would be kind enough to indicate acceptance of this donation and simultaneously provide permission to plant the trees, , as well as permission for a Targa representative to return to the selected planting location(s) for three years after planting for an annual visual inspection of the planted trees, please sign this document at the bottom of the page. The exact location of planting can be determined at a later date, but is dependent upon accessibility of the location by equipment and work crews.

Please contact me at any time with further questions at 701-258-5166 or by email at ppansegrau@ene.com.

Sincerely,

Paul D. Pansegrau

Acknowledged and agreed:

Willie LaDue
City Foreman
City of New Town

Date:



Ecology and Environment, Inc.
107 West Main Avenue, Suite 325
Bismarck, ND 58501

August 4, 2015

Kent Luttschwager
North Dakota Department of Game and Fish
13932 West Front Street
Williston, ND 58801-8602

Re: New Town to Stanley Pipeline Tree & Shrub Replacement

Dear Mr. Luttschwager,

During our recent conversation I had described the removal of 2 bushes from State Trust Land as part of installation of a pipeline by Targa Badlands LLC (Targa). I also described that Mike Haupt at State Trust Lands had suggested that I speak with you about replacement of the bushes on land managed by the Department of Game & Fish. The replacement would occur at a ratio of 2 to 1, meaning that there would be a donation of four (4) buffalo berry bushes to North Dakota Department of Game & Fish. Finally, I had asked if planting these bushes on the Van Hook Wildlife Management Area (WMA) would be agreeable to the Department of Game & Fish. You had indicated that you were agreeable to such a donation. Our client, Targa, will provide the trees and also pay for planting of the trees at locations to be indicated by you, as indicated on a map that you will provide. You had indicated that we will have to plant without power equipment, as the area is a walking access only area, but within 20 to 50 yards of a publicly accessible roadway.

If you would be kind enough to indicate acceptance of this donation and simultaneously provide permission to plant the trees, as well as permission for a Targa representative to return to the Van Hook WMA each September for three years after planting for an annual visual inspection of the planted trees, please sign this document at the bottom of the page. Please return the signed letter via email at your earliest convenience.

Please contact me at any time with further questions at 701-258-5166 or by email at ppansegrau@ene.com.

Sincerely,

A handwritten signature in black ink that reads "Paul D. Pansegrau".

Paul D. Pansegrau



Acknowledged and agreed:

Kent Luttschwager


Kent Luttschwager
North Dakota Department of Game & Fish
Williston, North Dakota

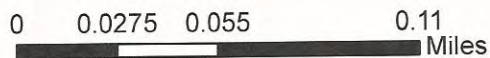
8/7/2015

Date

Van Hook Wildlife Management Area


Legend

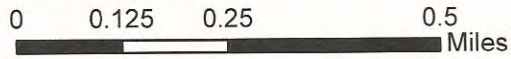
-  Wildlife Management Areas
-  NDHUB.PLSSSections



Van Hook Wildlife Management Area

Legend

-  Wildlife Management Areas
-  NDHUB.PLSSSections



Archived: Thursday, October 22, 2015 11:53:12 AM
From: Tucker, Travis
Sent: Friday, September 18, 2015 10:36:08 AM
To: Salazar, Rudy
Subject: RE: Tree & Shrub Planting
Importance: Normal

That is what I would do, lets get them planted in the city and I will continue to work on Sherri Reynolds.

Travis

From: Salazar, Rudy
Sent: Friday, September 18, 2015 10:35 AM
To: Tucker, Travis
Subject: RE: Tree & Shrub Planting

Thank you for sending the form and let me know if you hear from her. We are going to proceed like she is going to sign off and we are donating them to the city.

Thank you again.

Rudy Salazar
Sr. Environmental Specialist
Targa Resources
1000 Louisiana St.
Houston, TX 77002
(713) 584-1264 - Office
(713) 419-1002 - Cell
RudySalazar@targaresources.com

From: Tucker, Travis
Sent: Friday, September 18, 2015 10:34 AM
To: Salazar, Rudy
Subject: RE: Tree & Shrub Planting

I have already emailed the form to her and asked her to sign and send it back to. She has gone radio silent and not replying to emails for phone calls now.

Travis

From: Salazar, Rudy
Sent: Friday, September 18, 2015 10:32 AM
To: Tucker, Travis
Subject: RE: Tree & Shrub Planting

Please see the attached email with Julie Prescott. We need to certain that the land owner is ok with donating them. Could we send them a form to sign stating that she is ok with donating them. I know it's a long shot, but this type of paper work would safe us in the long run. Let me know your thoughts.

Thank you

Rudy Salazar
Sr. Environmental Specialist
Targa Resources
1000 Louisiana St.
Houston, TX 77002
(713) 584-1264 - Office
(713) 419-1002 - Cell
RudySalazar@targaresources.com

From: Tucker, Travis
Sent: Friday, September 18, 2015 10:28 AM
To: Salazar, Rudy
Subject: RE: Tree & Shrub Planting

Rudy

She told me this by phone, I have the emails that I sent her and one where she replied asking me to call her Tenant about another issue.

I will try and contact her again today.

Travis

From: Salazar, Rudy
Sent: Friday, September 18, 2015 10:22 AM
To: Tucker, Travis
Subject: RE: Tree & Shrub Planting

Travis,

It sounds like we have a land owner (Reynolds) that has stated that she does not want the trees and would like to donate them to New Town, but we only have emails from her. Could you provide them to me to have on record.

Thank you

Rudy Salazar
Sr. Environmental Specialist
Targa Resources
1000 Louisiana St.
Houston, TX 77002

(713) 584-1264 – Office
(713) 419-1002 – Cell
RudySalazar@targaresources.com

From: Tucker, Travis
Sent: Friday, September 18, 2015 10:10 AM
To: David Braden (davidbrdn@yahoo.com)
Cc: 'Pansegrau, Paul'; Salazar, Rudy
Subject: FW: Tree & Shrub Planting

David

Please contact Ardel and Mavis Moe on the New Town to Stanley line and let them know that we will be planting the trees on their property on Sept. 24th.

Travis

From: Pansegrau, Paul [<mailto:PPansegrau@ene.com>]
Sent: Thursday, September 17, 2015 3:59 PM
To: Tucker, Travis
Cc: Salazar, Rudy
Subject: Tree & Shrub Planting

Travis,

We are shooting for completing the planting of all remaining trees on Thursday, Sept. 24th.

Can you let Ardel and Mavis Moe know that we will be planting trees on their property that day?

Thank you,

Paul

cid:image001.jpg@01D089
8F.56B27910

Paul D. Pansegrau, Ph.D.
107 West Main Avenue, Suite 325, Bismarck, ND 58501
Phone: 701-258-5166 • FAX: 701-258-5172 • Cell: 701-595-2725
ppansegrau@ene.com • www.ene.com

This email (including any attachments and accompanying emails) may contain proprietary and confidential information. If you are not the intended recipient, please telephone the sender and immediately delete this e-mail (including any attachments and accompanying emails). Please do not replicate, disclose, distribute, forward, or retain this e-mail or any part of this email. Thank you.

Appendix E: Public Service Commission Correspondence

APPROVED

DATE: 7-29-2015
SAS

MOTION

July 29, 2015

**Targa Badlands LLC
8-Inch Crude Pipeline Project – Mountrail County
Siting Application**

Case No. PU-14-625

I move the Commission approve Targa Badlands LLC's July 16, 2015, Tree and Shrub Replacement Plan, Targa Badlands LLC, 8-Inch Crude Pipeline Project – Mountrail County, Siting Application, Case No. PU-14-625.

JSP

interoffice
MEMORANDUM

To: Commissioner Julie Fedorchak
Commissioner Randy Christmann
Commissioner Brian P. Kalk

From: Julie Prescott, Utility Analyst

Subject: PU-14-625 Targa Badlands LLC, 8-Inch Crude Pipeline Project – Mountrail Co.
Request to Amend Tree and Shrub Replacement Plan

Date: August 12, 2015

On July 29, 2015, the Commission approved Targa Badlands LLC's (Targa's) tree and shrub replacement plan (Plan) in compliance with the Commission's Order in Case No. PU-14-625, dated January 26, 2015. The Order issued Certificate of Corridor Compatibility No. 162 and Route Permit No. 174 to Targa to operate and maintain approximately 31.7 miles of 8-inch crude oil pipeline and associated facilities in Mountrail County, North Dakota.

On August 12, 2015, Targa filed a request to amend the Plan. Targa requests that it be allowed to replace 37 Hawthorn shrubs identified in the Plan with 37 Canadian chokecherry shrubs, due to shortage of available, healthy nursery stock. Targa also requests a change of location for these plantings, at the landowner's request.

According to NDSU Extension Service Publication EB-38 (Revised), *Trees and Shrubs of North Dakota*, both Hawthorn and chokecherry shrubs are found throughout the state in ravines and wooded areas, and have "excellent" wildlife value, providing cover and forage (fruit, buds, wood, and foliage) for a variety of game and song birds, fur bearers, game animals, small and hooved browsers.