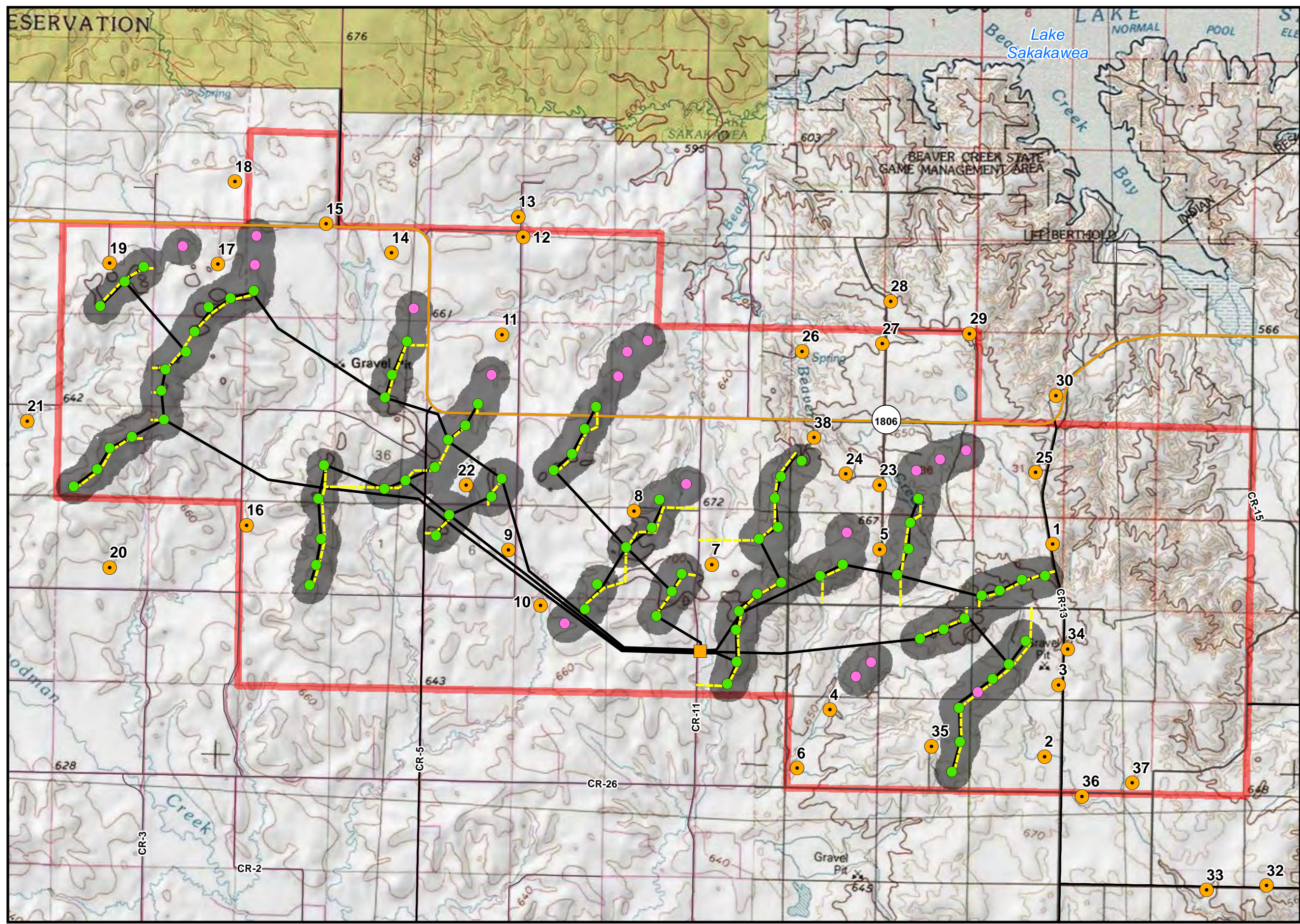


Antelope Hills Wind Project
Application for North Dakota
Certificate of
Site Compatibility

Figure 13A
Turbine Sound Levels
Greater Than 50dB
Siemens

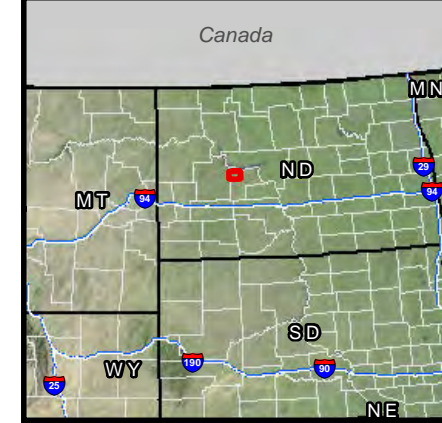
Mercer County, ND
August 2014



- Project
- Proposed Substation
- Turbine Location*
- Alternate Turbine Location*
- Approximate Underground Collection System Routing
- Approximate Access Road Routing
- State Highway
- County Major Collector Road
- Other County Road
- Residence
- 50dBA or Greater Noise Extent**

*The Project would utilize up to 75 Siemens 2.3-108 turbines; however, 92 potential turbine locations are included on this figure to account for alternate locations that may be used.

**Based on typical downwind conditions. For anomalous meteorological conditions, see the Noise Technical Memo.



P:\GIS_PROJECTS\Infinity_Wind_Power\AntelopeHills_Wind\MXDs\CS\Infinity_AHCSC_Fig_13A_Siemens_SoundLevels_17111_20140815.mxd - Last Saved 8/15/2014

