











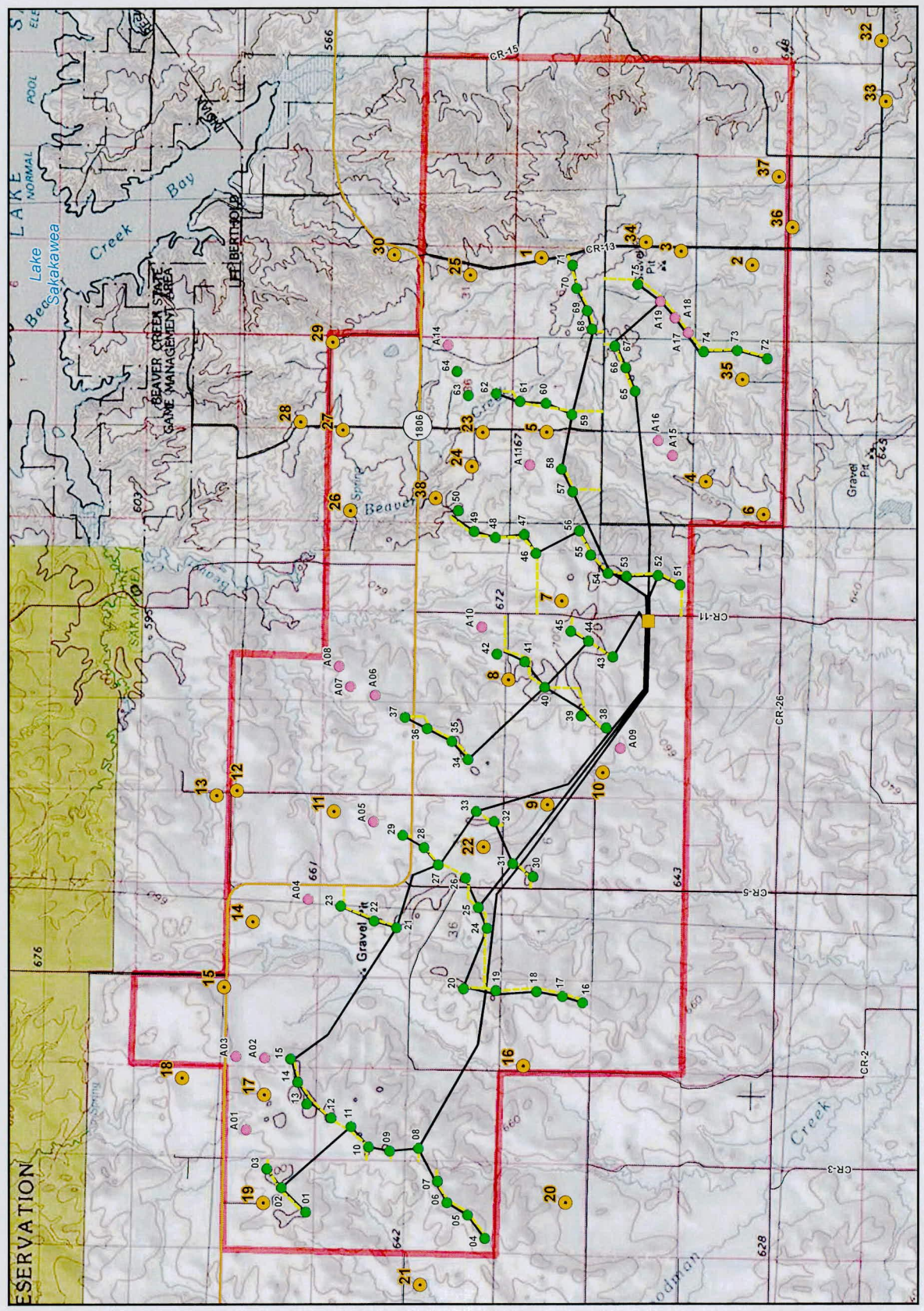
**Antelope Hills Wind Project  
Application for North Dakota  
Certificate of  
Site Compatibility**

**Exhibit 5A  
Residences and  
Turbines (Siemens)**

Mercer County, ND  
October 30, 2014

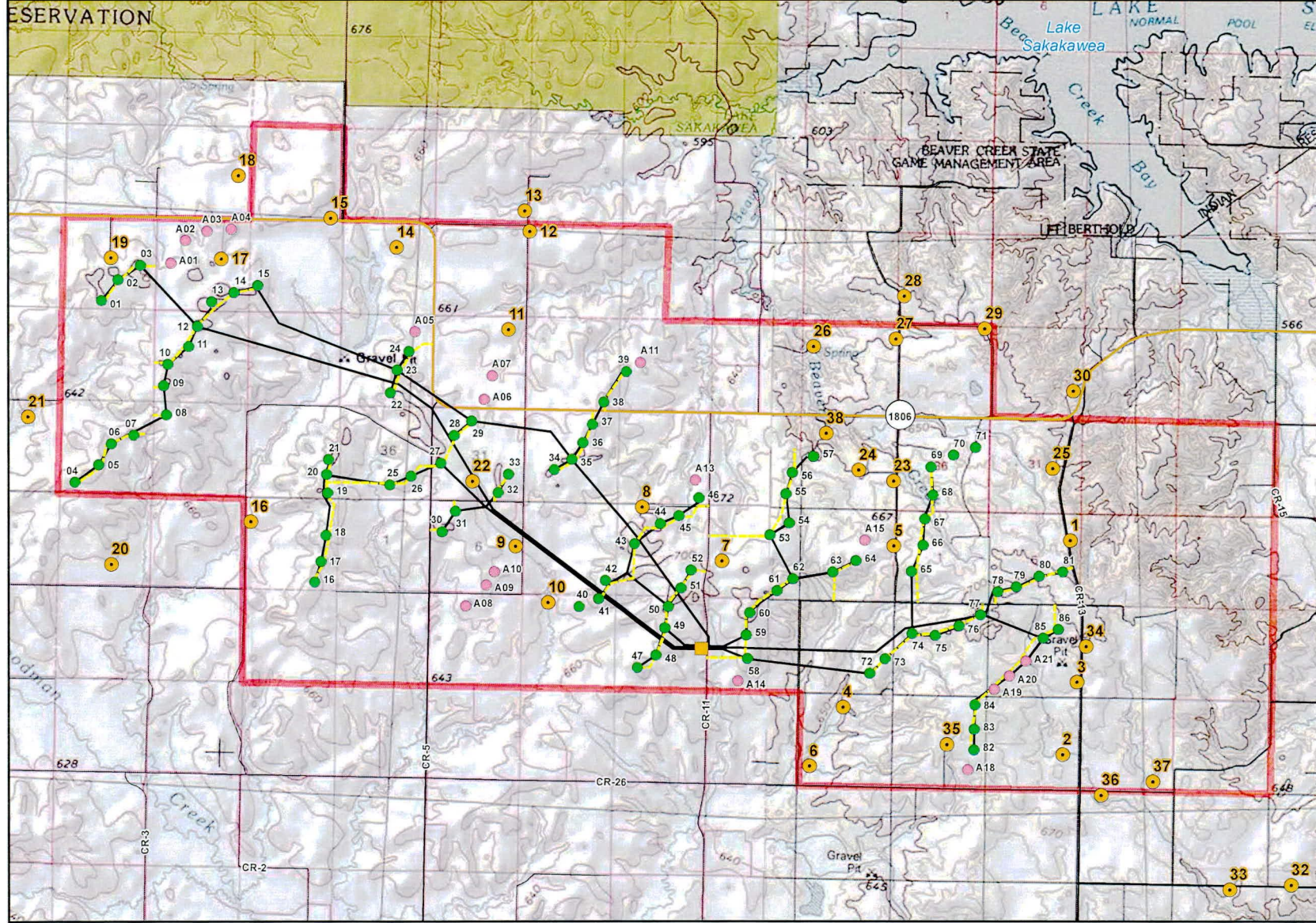
-  Project Area
-  Proposed Substation
-  Turbine Location\*
-  Alternate Turbine Location\*
-  Approximate Underground Collection System Routing
-  Approximate Access Road Routing
-  State Highway
-  County Major Collector Road
-  Other County Road
-  Residence

\*The Project would utilize up to 75 Siemens 2.3-1.08 turbines; however, 92 potential turbine locations are included on this figure to account for alternate locations that may be used.



0 2 4 Miles

PIGIS\_PROJECT\Infinity\_Wind\_Power\AntelopeHills\_Wind\MapDocs\CSC\Exhibit\_5\_0\Infinity\_Exhibit\_5\_V100\_Distances\_17111\_20141030.mxd - Last Saved 10/30/2014



**Antelope Hills Wind Project  
Application for North Dakota  
Certificate of  
Site Compatibility**

**Exhibit 5B  
Residences and  
Turbines (Vestas V-100)**

Mercer County, ND  
October 30, 2014

- Project Area
- Proposed Substation
- Turbine Location\*
- Alternate Turbine Location\*
- Approximate Underground Collection System Routing
- Approximate Access Road Routing
- State Highway
- County Major Collector Road
- Other County Road
- Residence

\*The Project would utilize up to 86 Vestas V-100 turbines; however, 105 potential turbine locations are included on this figure to account for alternate locations that may be used.



1:65,000 NAD\_1983\_StatePlane\_North\_Dakota\_South\_FIPS\_3302\_Feet



## Antelope Hills Wind Power Project.

## EX 5L: Distance Between Occupied Residence and Closet Turbine.

ResidenceID	Nearest Siemens Turbine	Siemens Distance (ft)	Nearest V100 Turbine	V100 Distance (ft)	Nearest V110 Turbine	V110 Distance (ft)
1	71	1,856	81	1,856	71	1,856
2	73	4,926	82	4,973	73	4,926
3	A19	3,090	A21	3,090	A19	3,090
4	A15	2,417	72	2,417	A15	2,417
5	60	1,644	66	1,644	60	1,644
6	A15	6,249	72	6,249	A15	6,249
7	45	1,807	52	1,807	45	1,807
8	41	1,397	44	1,397	41	1,397
9	32	3,218	A10	1,897	32	3,218
10	A09	1,739	40	1,769	A09	1,739
11	A05	2,387	A07	2,806	A05	2,387
12	A04	7,515	A07	8,526	A04	7,515
13	A04	8,003	A05	9,327	A04	8,003
14	A04	3,448	A05	4,937	A04	3,448
15	A03	4,080	15	5,678	A03	4,080
16	18	4,327	18	4,327	18	4,327
17	14	2,087	A03	1,750	14	2,087
18	A03	3,355	A04	3,086	A03	3,355
19	2	1,375	02	1,336	2	1,375
20	4	5,094	04	5,094	4	5,094
21	4	4,606	04	4,606	4	4,606
22	32	1,572	32	1,572	32	1,572
23	63	2,259	69	2,259	63	2,259
24	50	2,634	57	2,634	50	2,634
25	A14	4,179	71	4,473	A14	4,179
26	50	6,297	57	6,297	50	6,297
27	64	7,431	70	7,392	64	7,431
28	64	9,545	70	9,518	64	9,545
29	A14	6,730	71	6,836	A14	6,730
30	A14	6,052	71	6,382	A14	6,052
31	75	16,458	86	15,732	75	16,458
32	72	19,210	A18	19,210	72	19,210
33	72	16,127	A18	16,127	72	16,127
34	75	2,451	86	1,806	75	2,451
35	73	1,658	82	1,563	73	1,658
36	72	7,626	82	7,571	72	7,626
37	A19	9,816	A21	9,816	A19	9,816
38	50	1,519	57	1,519	50	1,519