

EXHIBIT 2

CALIBER NGL DEPTH MEASUREMENTS MAP

NGL Depth Measurements

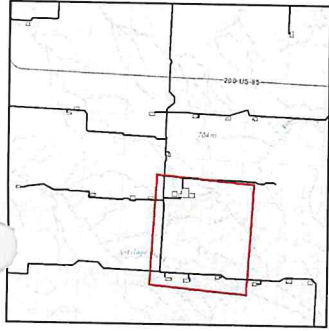
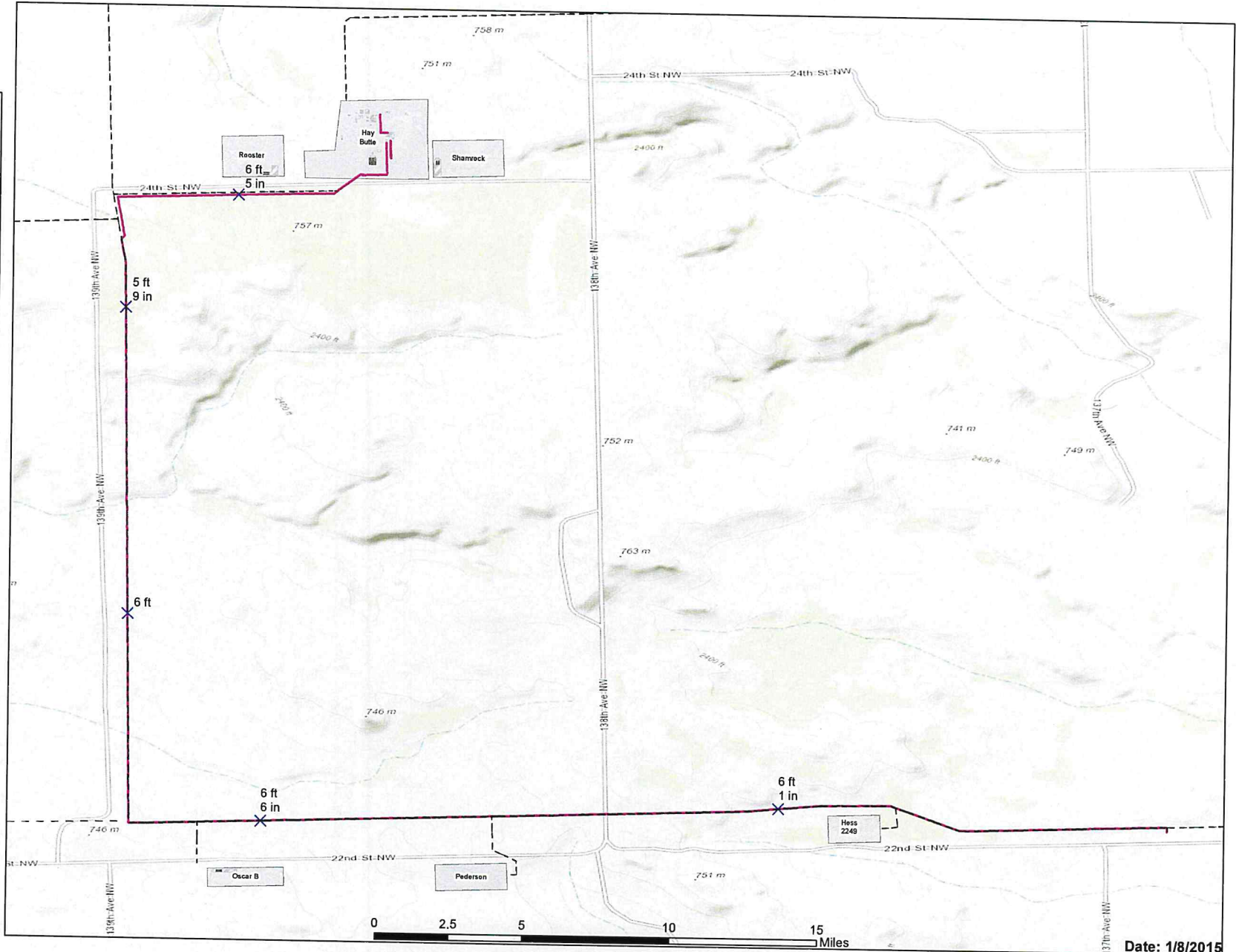


Exhibit 2

Coordinate System: NAD 1983 StatePlane North Dakota North FIPS 3201 Feet
 Projection: Lambert Conformal Conic
 Datum: North American 1983
 False Easting: 1,568,500.0000
 False Northing: 0.0000
 Central Meridian: -100.5000
 Standard Parallel 1: 47.4333
 Standard Parallel 2: 48.7333
 Latitude Of Origin: 47.0000
 Units: Foot US

— Natural Gas Liquids Pipeline
 X Depth Measurement



Date: 1/8/2015