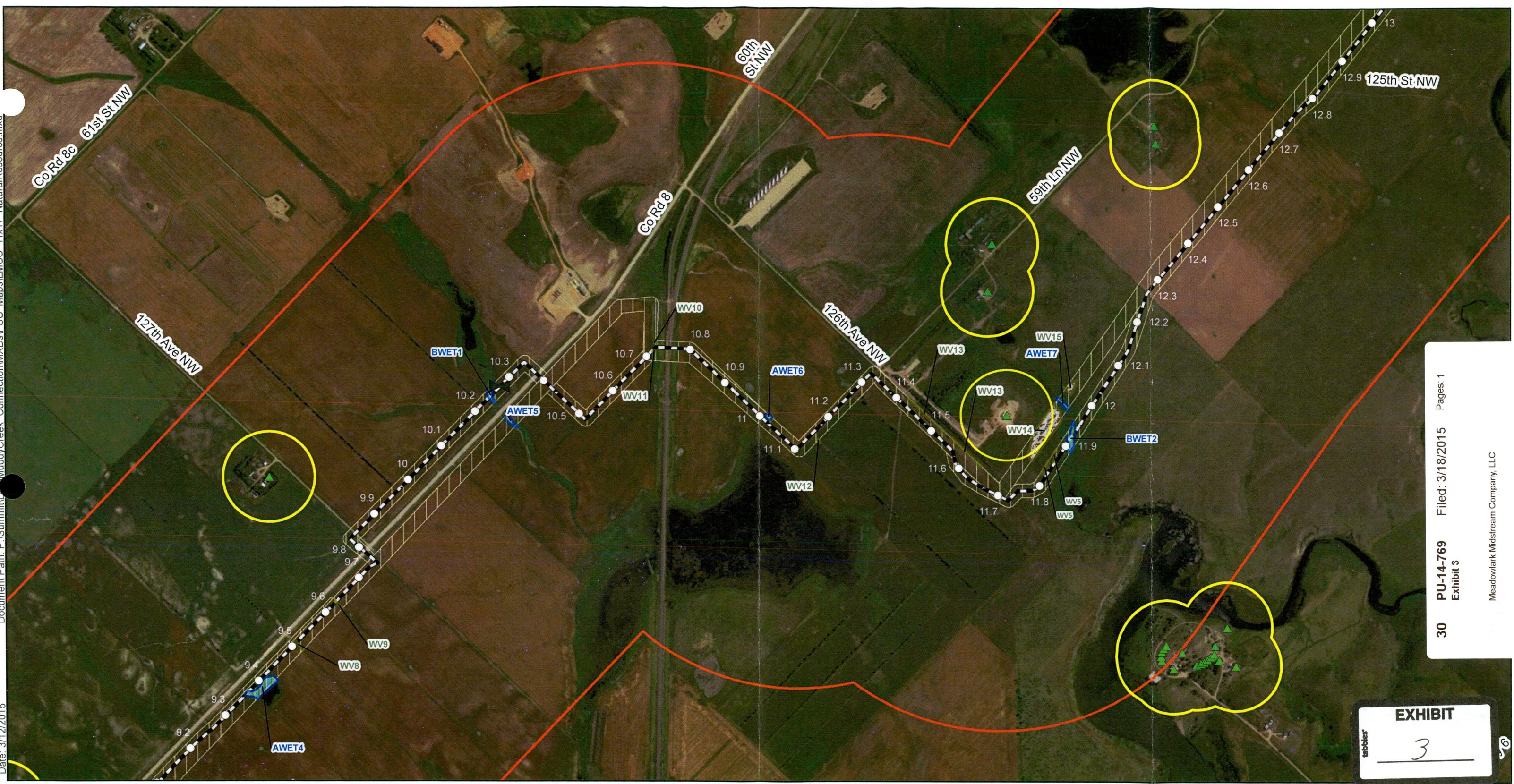
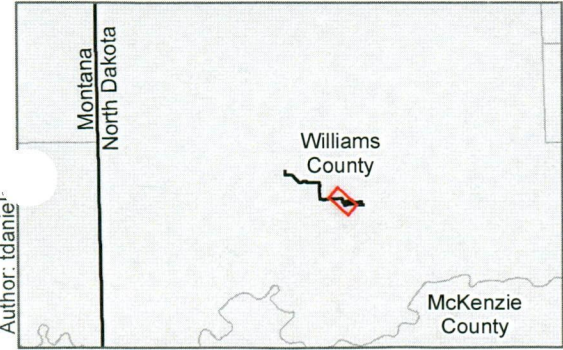


Document Path: P:\Summit\LittleMuddyCreek_Connection\MXD\IPSC_Maps\LMCC_11x17_NaturalResource.mxd
 Date: 3/12/2015



30 PU-14-769 Filed: 3/18/2015 Pages: 1
 Exhibit 3
 Meadowlark Midstream Company, LLC

EXHIBIT
 3



Centerline	Noxious Weed
Inventory Corridor	NDWC Well
Corridor (1 mile)	Potentially Occupied Structure
Ephemeral Drainage	1 Mile Corridor
Wetland	Inventory Corridor
Woody Vegetation	500 ft. buffer

E3 ENVIRONMENTAL
 Enhancing Execution with Experience

0 500 1,000 2,000 Feet
 1:12,000

Map not to scale, for environmental review purposes only.

Summit Midstream Partners
 Little Muddy Creek Connection
 Siting Criteria
 Natural Resource - Aerial Map
 Page 5 of 6
 Williams County, North Dakota