

OWNERSHIP: 12+32.9

TERRY R. & KAREN I. IRGENS
 SE1/4 & SW1/4
 SEC.24, T156N, R100W
 1237.31 FT., 74.99 RODS

0+00.0

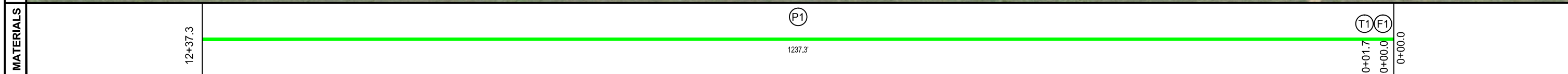
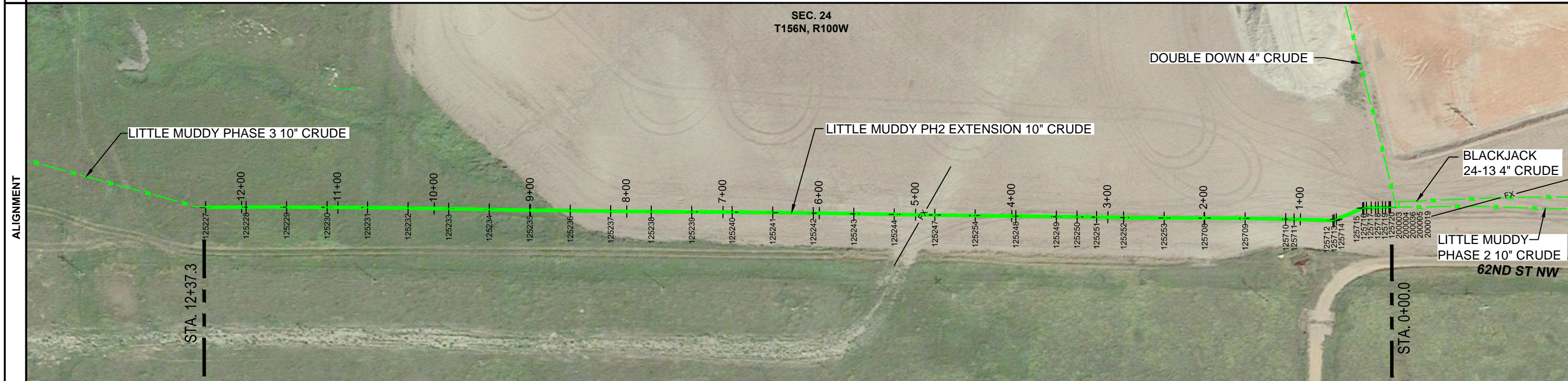
STATIONING

WILLIAMS COUNTY

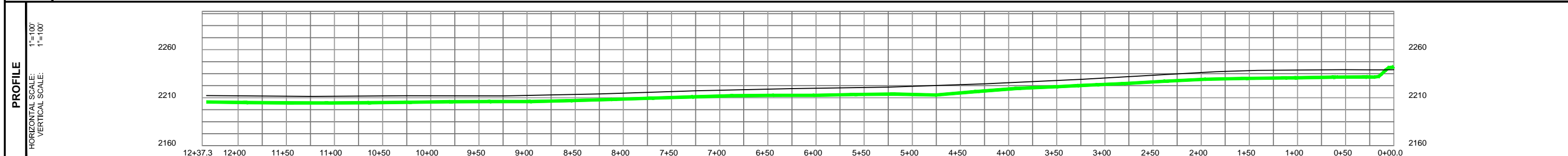
SCALE: 1"=100' (H)
1"=100' (V)

4+92.1 EX-PIPELINE UNKNOWN

0+00.0 LITTLE MUDDY PIPELINE PH2



COVER: NEGATIVE VALUES INDICATE ABOVE GRADE



	SECTION LINE		EXISTING PAD OUTLINE
	QUARTER SECTION LINE		SUMMIT SALT WATER
	PROPERTY/ROW LINE		SUMMIT OIL
	ROAD CL		FX FOREIGN PIPE XING
	PIPE/TRENCH CENTERLINE		ABAND ABANDONED PIPELINE
	FENCE		COMM COMMUNICATION CABLE
	OHE OVERHEAD ELECTRIC		HT HEAT TRACE
	UE UNDERGROUND ELECTRIC		

MATERIAL SUMMARY		
MARK	QTY.	DESCRIPTION
P1	1237LF	10" API5L PSL-2, X42/52, HFW, FBE, WT 0.365
F1	1EA	FLANGE
T1	1EA	BLOW OFF

REVISIONS		
NO.	DATE	DESCRIPTION
2	12/14/16	ADDED SPREADSHEETS

CHIPPEWA RESOURCES
 SURVEY & ENGINEERING DIVISION
 1408 20th Avenue SW, Suite 6
 Minot, ND 58703

LITTLE MUDDY PH2 EXTENSION
 ASBUILT ALIGNMENT SHEET
 WILLIAMS COUNTY, NORTH DAKOTA

SUMMIT MIDSTREAM
 999 18th Street, Suite 3400S,
 Denver, CO 80202

DRAWN BY: CL CHECKED BY: TW APPROVED BY: TW
 JOB NO. 0000 CONTACT: D. Blikre DATE: 02/25/16 SHEET NO. SHT001 REV. 2

Station	SlopeStation	Code	MATERIAL	NOM DIAMETER	OUT DIAMETER	WALL THICKNESS	SCH	PIPE GRADE	PIPE SPEC	COATING	HEAT	DEGREE	COVER	NOTES
0+15.6	0+19.3	ELBOW	steel	10	10.75	0.365	40	x52	API-5L PSL2					
0+27.7	0+31.5	ELBOW	steel	10	10.75	0.365	40	x52	API-5L PSL2					
0+61.1	0+64.9	ELBOW	steel	10	10.75	0.365	40	x52	API-5L PSL2					

Station	SlopeStation	Code	NOM DIAMETER AHEAD	OUT DIAMETER AHEAD	WALL THICKNESS AHEAD	PIPE GRADE AHEAD	PIPE SPEC AHEAD	SEAM AHEAD	COATING AHEAD	WRAP TYPE	XRAY NUMBER	HEAT AHEAD	JOINT AHEAD	JOINT BACK
0+12.8	0+15.6	WELD	10	10.75	0.365	X52M	API-5L PSL2	HFW	FBE	CANUSA K-60/RD-6 WRAP	LMF-28	SQ94783	92	ELBOW
0+20.0	0+23.8	WELD	10	10.75	0.365	X52M	API-5L PSL2	HFW	FBE	CANUSA K-60/RD-6 WRAP	BLMT-246	55768	ELBOW	73
0+25.0	0+28.8	WELD	10	10.75	0.365	X52M	API-5L PSL2	HFW	FBE	CANUSA K-60/RD-6 WRAP	BLMT-247	2174100915	73 PUP	ELBOW
0+28.9	0+32.6	WELD	10	10.75	0.365	X52M	API-5L PSL2	HFW	FBE	CANUSA K-60/RD-6 WRAP	BLMT-248	2161720915	ELBOW	103
0+58.6	0+62.4	WELD	10	10.75	0.365	X52M	API-5L PSL2	HFW	FBE	CANUSA K-60/RD-6 WRAP	BLMT-249	2161720915	103	ELBOW
0+62.4	0+66.1	WELD	10	10.75	0.365	X52M	API-5L PSL2	HFW	FBE	CANUSA K-60/RD-6 WRAP	BLMT-250	CX0087	ELBOW	153
1+02.7	1+06.5	WELD	10	10.75	0.365	X52M	API-5L PSL2	HFW	FBE	CANUSA K-60 SHRINK SLEEVE	BLM-526	SQ94783	153	156
1+11.4	1+15.2	WELD	10	10.75	0.365	X52M	API-5L PSL2	HFW	FBE	CANUSA K-60 SHRINK SLEEVE	BLMT-251	SQ94783	156	102
1+53.5	1+57.2	WELD	10	10.75	0.365	X52M	API-5L PSL2	HFW	FBE	CANUSA K-60 SHRINK SLEEVE	BLMT-527	SQ94783	102	133
1+53.5	1+57.3	WELD	10	10.75	0.365	X52M	API-5L PSL2	HFW	FBE	CANUSA K-60 SHRINK SLEEVE	BLM-527	SQ94783	102	133
1+95.6	1+99.3	WELD	10	10.75	0.365	X52M	API-5L PSL2	HFW	FBE	CANUSA K-60 SHRINK SLEEVE	BLMT-528	SQ94783	133	154
1+95.6	1+99.4	WELD	10	10.75	0.365	X52M	API-5L PSL2	HFW	FBE	CANUSA K-60 SHRINK SLEEVE	BLM-528	SQ94783	133	154
2+37.7	2+41.5	WELD	10	10.75	0.365	X52M	API-5L PSL2	HFW	FBE	CANUSA K-60 SHRINK SLEEVE	BLM-529	SQ94783	154	101
2+79.7	2+83.6	WELD	10	10.75	0.365	X52M	API-5L PSL2	HFW	FBE	CANUSA K-60 SHRINK SLEEVE	BLM-530	SQ94783	10	11
3+07.7	3+11.7	WELD	10	10.75	0.365	X52M	API-5L PSL2	HFW	FBE	CANUSA K-60 SHRINK SLEEVE	BLM-531	2156290915	11	8
3+28.0	3+32.0	WELD	10	10.75	0.365	X52M	API-5L PSL2	HFW	FBE	CANUSA K-60 SHRINK SLEEVE	BLM-532	2168470915	8	6
3+49.6	3+53.6	WELD	10	10.75	0.365	X52M	API-5L PSL2	HFW	FBE	CANUSA K-60 SHRINK SLEEVE	BLM-533	2168470915	6	131
3+91.7	3+95.7	WELD	10	10.75	0.365	X52M	API-5L PSL2	HFW	FBE	CANUSA K-60 SHRINK SLEEVE	BLM-534	SQ94783	131	94
4+33.8	4+38.0	WELD	10	10.75	0.365	X52M	API-5L PSL2	HFW	FBE	CANUSA K-60 SHRINK SLEEVE	BLMT-234	SQ94783	94	107
4+75.7	4+80.0	WELD	10	10.75	0.365	X52M	API-5L PSL2	HFW	FBE	CANUSA K-60 SHRINK SLEEVE	BLM-535	SQ94783	107	93
5+17.9	5+22.2	WELD	10	10.75	0.365	X52M	API-5L PSL2	HFW	FBE	CANUSA K-60 SHRINK SLEEVE	BLMT-235	SQ94783	93	106
5+59.8	5+64.1	WELD	10	10.75	0.365	X52M	API-5L PSL2	HFW	FBE	CANUSA K-60 SHRINK SLEEVE	BLM-536	SQ94783	106	100
6+01.9	6+06.2	WELD	10	10.75	0.365	X52M	API-5L PSL2	HFW	FBE	CANUSA K-60 SHRINK SLEEVE	BLM-537	SQ94783	100	95
6+44.1	6+48.4	WELD	10	10.75	0.365	X52M	API-5L PSL2	HFW	FBE	CANUSA K-60 SHRINK SLEEVE	BLM-538	SQ94783	95	108
6+86.2	6+90.5	WELD	10	10.75	0.365	X52M	API-5L PSL2	HFW	FBE	CANUSA K-60 SHRINK SLEEVE	BLM-539	SQ94783	108	109
7+28.1	7+32.5	WELD	10	10.75	0.365	X52M	API-5L PSL2	HFW	FBE	CANUSA K-60 SHRINK SLEEVE	BLM-551	SQ94783	109	137
7+70.2	7+74.5	WELD	10	10.75	0.365	X52M	API-5L PSL2	HFW	FBE	CANUSA K-60 SHRINK SLEEVE	BLM-540	SQ94783	137	21
8+12.3	8+16.7	WELD	10	10.75	0.365	X52M	API-5L PSL2	HFW	FBE	CANUSA K-60 SHRINK SLEEVE	BLM-541	SQ94783	21	305
8+54.3	8+58.7	WELD	10	10.75	0.365	X52M	API-5L PSL2	HFW	FBE	CANUSA K-60 SHRINK SLEEVE	BLM-542	2166230915	305	711
8+96.4	9+00.8	WELD	10	10.75	0.365	X52M	API-5L PSL2	HFW	FBE	CANUSA K-60 SHRINK SLEEVE	BLM-543	SQ94783	711	32
9+38.5	9+42.9	WELD	10	10.75	0.365	X52M	API-5L PSL2	HFW	FBE	CANUSA K-60 SHRINK SLEEVE	BLM-544	SQ94783	32	102
9+80.5	9+85.0	WELD	10	10.75	0.365	X52M	API-5L PSL2	HFW	FBE	CANUSA K-60 SHRINK SLEEVE	BLM-545	SQ94783	102	5
10+22.7	10+27.2	WELD	10	10.75	0.365	X52M	API-5L PSL2	HFW	FBE	CANUSA K-60 SHRINK SLEEVE	BLM-546	SQ94783	5	139
10+64.8	10+69.2	WELD	10	10.75	0.365	X52M	API-5L PSL2	HFW	FBE	CANUSA K-60 SHRINK SLEEVE	BLM-547	216589095	139	140
11+06.7	11+11.1	WELD	10	10.75	0.365	X52M	API-5L PSL2	HFW	FBE	CANUSA K-60 SHRINK SLEEVE	BLM-548	2161720915	140	133
11+48.8	11+53.2	WELD	10	10.75	0.365	X52M	API-5L PSL2	HFW	FBE	CANUSA K-60 SHRINK SLEEVE	BLM-549	2161720915	133	93
11+90.9	11+95.3	WELD	10	10.75	0.365	X52M	API-5L PSL2	HFW	FBE	CANUSA K-60 SHRINK SLEEVE	BLM-550	2161720915	93	63

REVISIONS	
NO.	DATE
2	12/14/16

CHIPPEWA RESOURCES

 SURVEY & ENGINEERING DIVISION
 1408 20th Avenue SW, Suite 6
 Minot, ND 58703

LITTLE MUDDY PH2 EXTENSION SPREADSHEETS
 WILLIAMS COUNTY, NORTH DAKOTA

 999 18th Street, Suite 3400S,
 Denver, CO 80202

DRAWN BY:	C.L.	CHECKED BY:		APPROVED BY:	TW	JOB NO.	0000	CONTACT:	D. Blikre	DATE:	12/14/16	SHEET NO.:	SHT002	REV:	2
-----------	------	-------------	--	--------------	----	---------	------	----------	-----------	-------	----------	------------	--------	------	---