

***LITTLE MUDDY CREEK INTERCONNECT
PIPELINE***

ALIGNMENT SHEETS

WILLIAMS COUNTY, NORTH DAKOTA

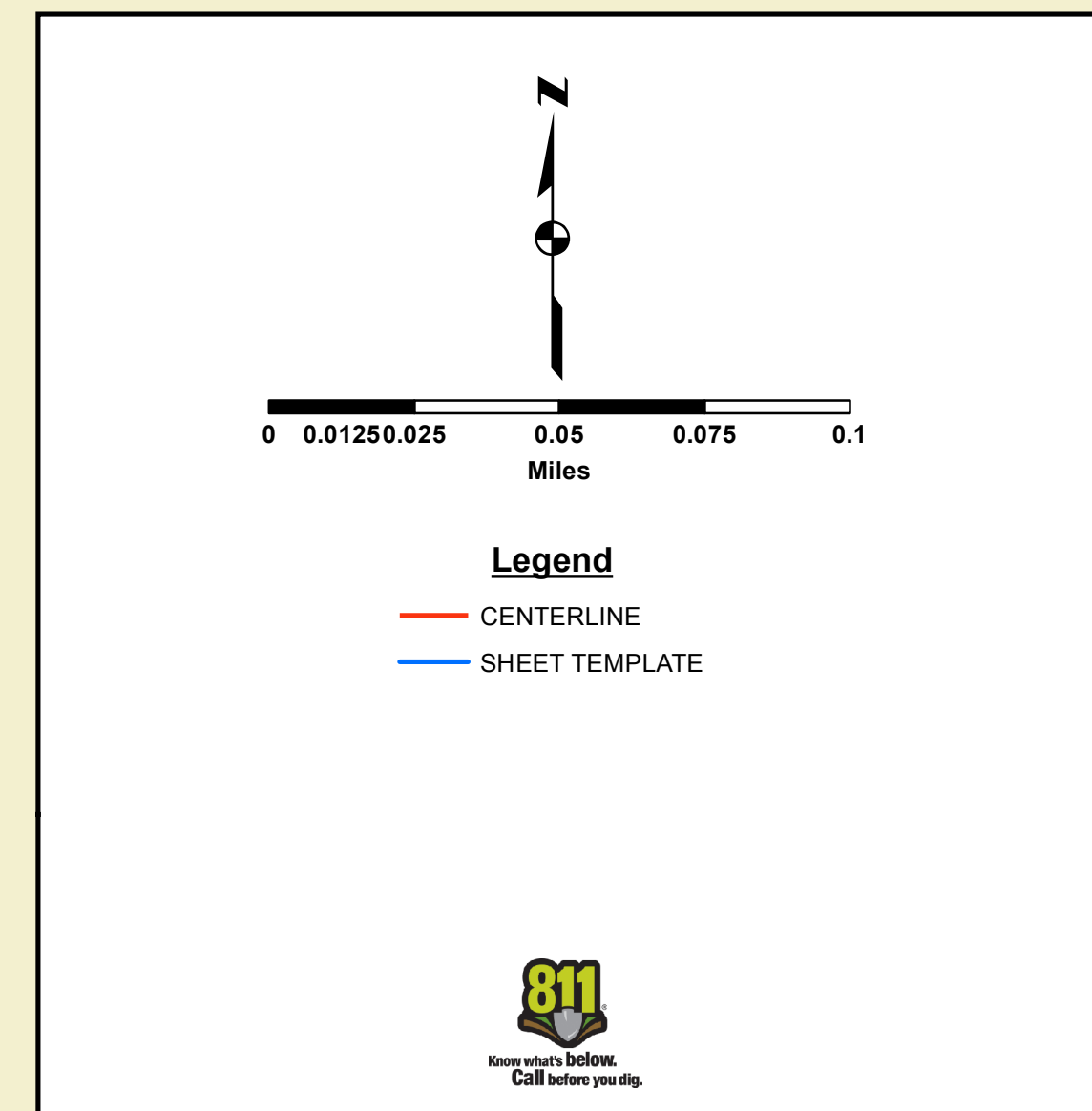
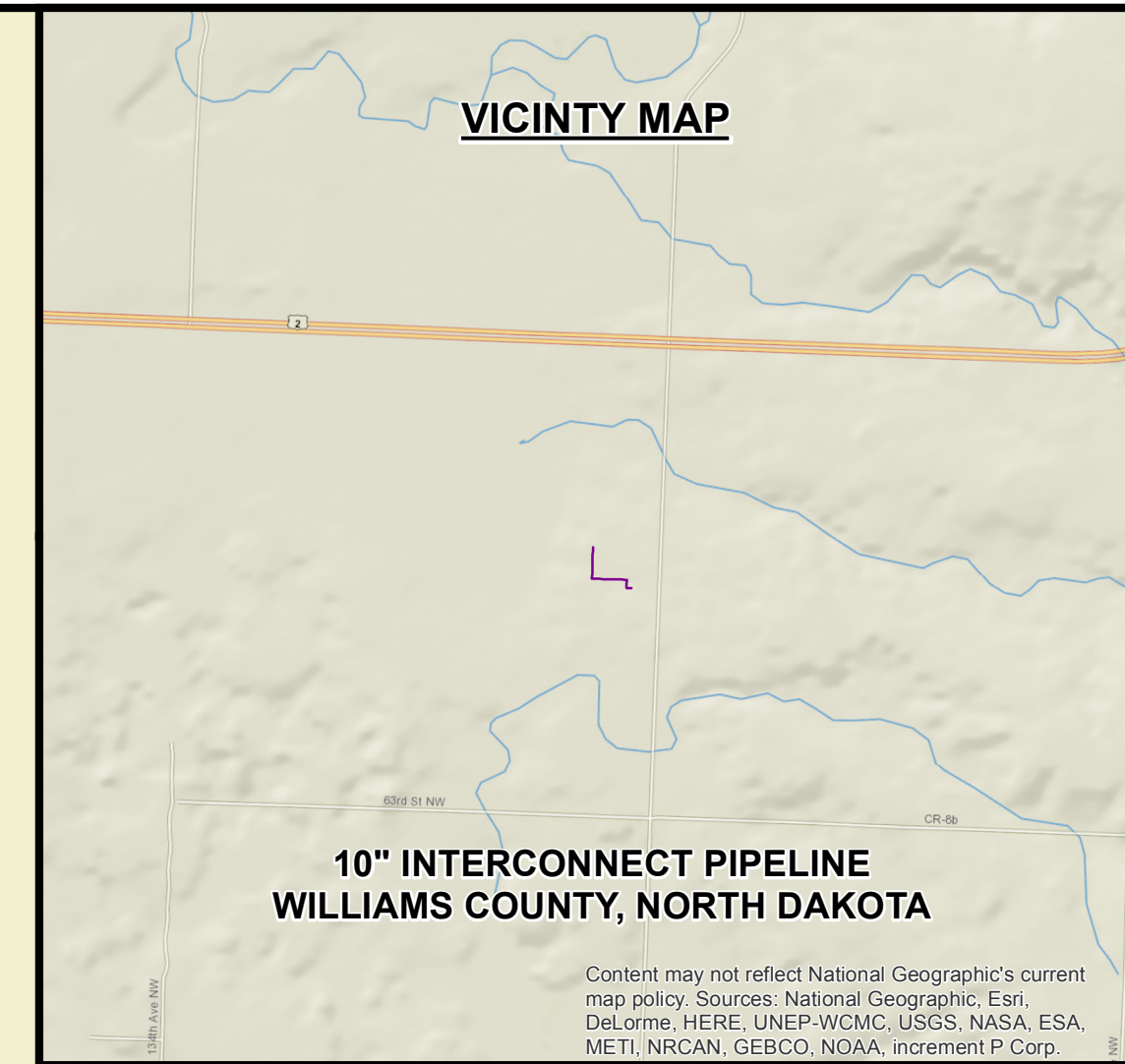
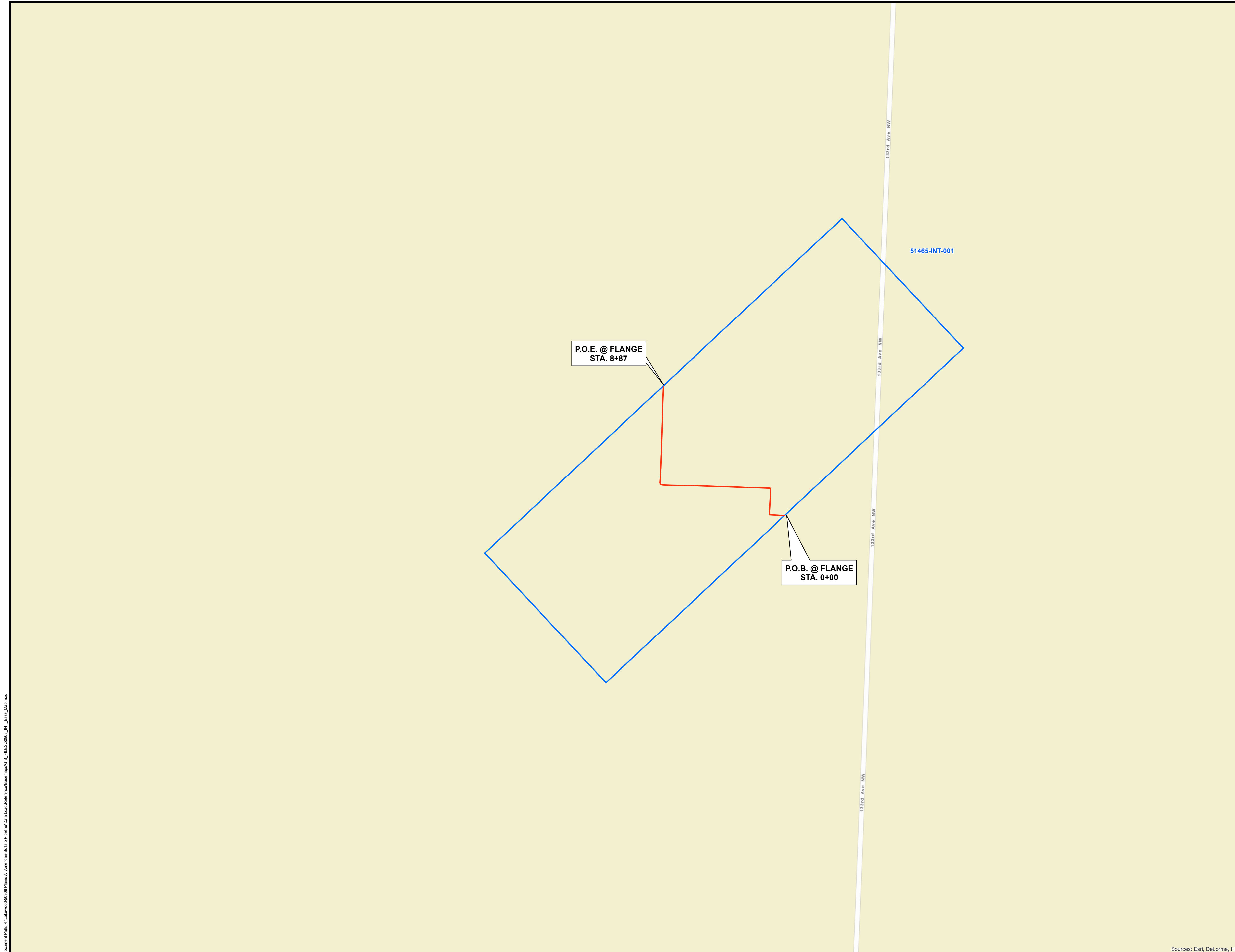
ISSUED FOR RECORD

2/24/2015

REV. 0



LW Survey Co.
12345 W. Alameda Pkwy, Suite 205
Lakewood, CO 80228



**SUMMIT
MIDSTREAM**

LWS

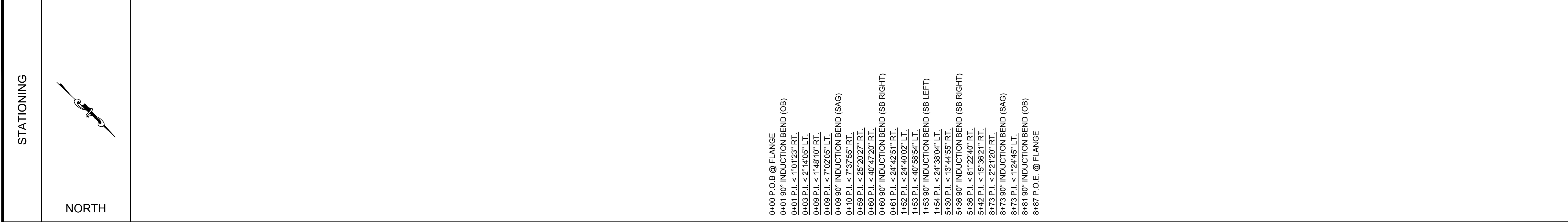
110 W. 7th Street,
Suite. 1210
Tulsa, OK 74119
918-576-7434

**10" INTERCONNECT PIPELINE
WILLIAMS COUNTY, NORTH DAKOTA**

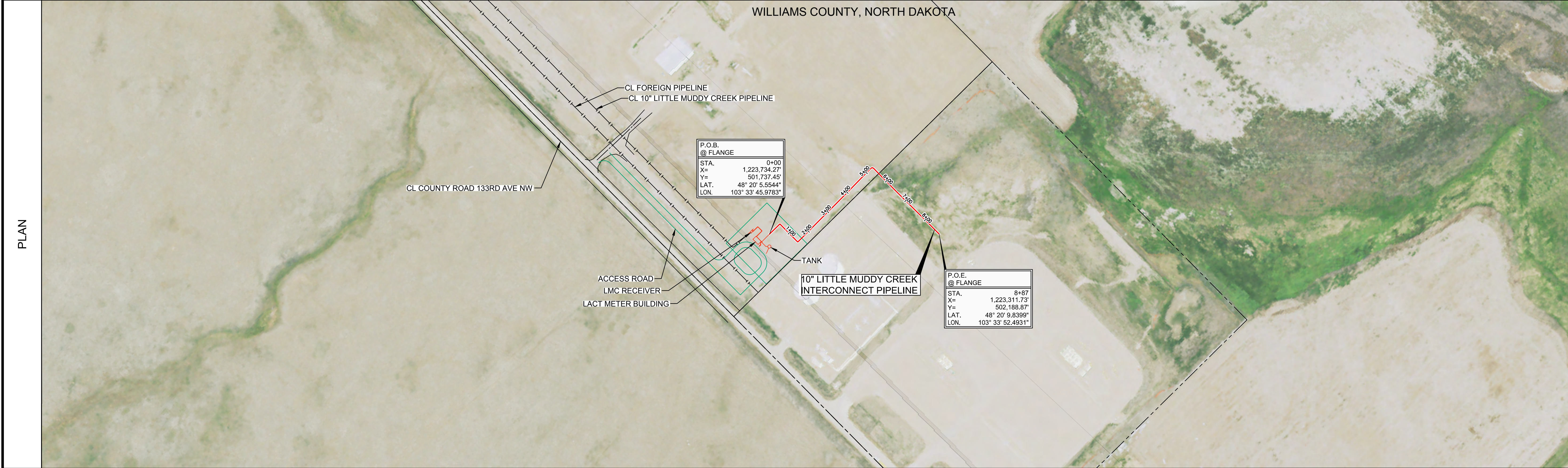
TRACT	TRACT NUMBER	(011)	(012)
	OWNER NAME	THOMAS J. & JUDITH A. IRGENS	ENBRIDGE PROPERTIES, LLC
	RODDAGE	34.01 RODS	18.89 RODS

NOTES

- FOREIGN UTILITY LOCATIONS ARE APPROXIMATE AND MUST BE VERIFIED BY CONTRACTOR.
- UNLESS OTHERWISE NOTED, ALL WASH CROSSINGS MINIMUM OF FIVE (5) FEET COVER.



- 0+00 P.O.B @ FLANGE
- 0+01 90° INDUCTION BEND (OB)
- 0+01 P.I. < 1°01'23" RT.
- 0+03 P.I. < 2°14'05" LT.
- 0+09 P.I. < 1°48'10" RT.
- 0+09 90° INDUCTION BEND (SAG)
- 0+10 P.I. < 7°37'55" RT.
- 0+59 P.I. < 25°20'27" RT.
- 0+60 90° INDUCTION BEND (SB RIGHT)
- 0+61 P.I. < 24°42'51" RT.
- 1+52 P.I. < 24°46'02" LT.
- 1+53 90° INDUCTION BEND (SB LEFT)
- 1+54 P.I. < 24°38'04" LT.
- 5+30 P.I. < 13°44'55" RT.
- 5+36 90° INDUCTION BEND (SB RIGHT)
- 5+36 P.I. < 61°22'40" RT.
- 5+42 P.I. < 15°38'21" RT.
- 8+73 90° INDUCTION BEND (SAG)
- 8+73 P.I. < 1°24'45" LT.
- 8+81 90° INDUCTION BEND (OB)
- 8+87 P.O.E @ FLANGE

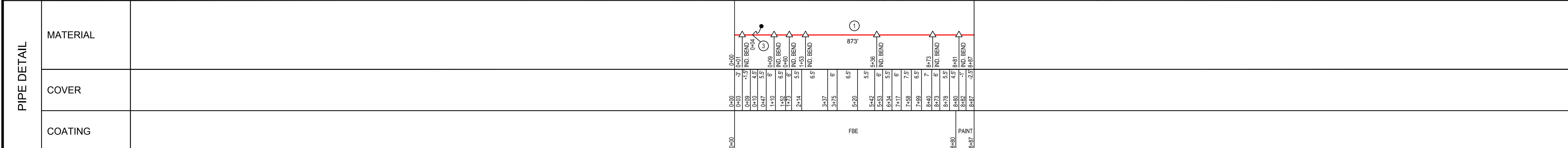


LEGEND

	CENTERLINE		MILE POST
	PERMANENT EASEMENT		MAINLINE VALVES
	EXISTING PIPELINE		TEE
	C/L ROAD		LAUNCHER / RECEIVER
	DEEDED PROPERTY LINE		DRAINAGE
	ASSESSOR PROPERTY LINE		WELL HEAD
	POWER LINE		TEST STATION
	FENCE LINE		TRANSMISSION TOWER
	TELEGRAPH LINE		POWER POLE
	RAILROAD		
	TRANSMISSION LINE		
	UNDERGROUND ELECTRIC		
	WATER LINE		
	FIBER OPTIC CABLE		

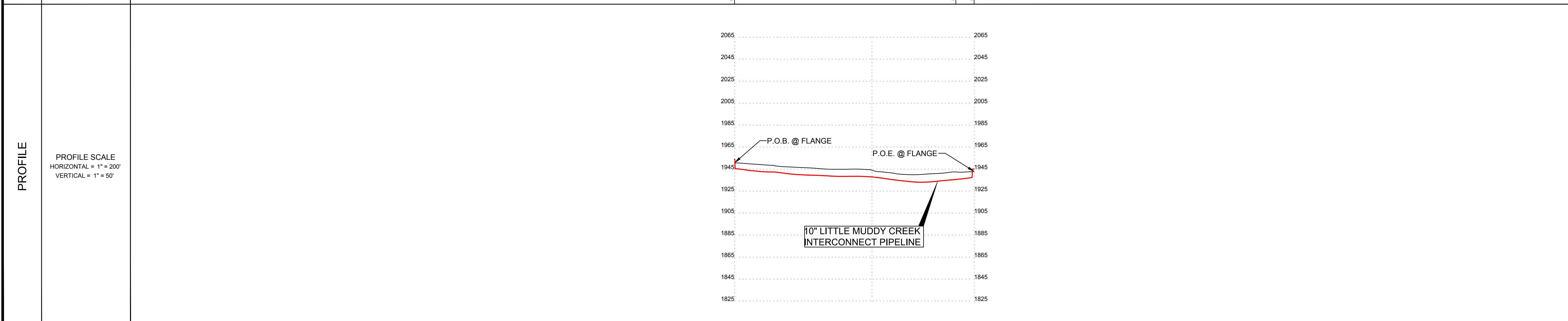
BILL OF MATERIALS

#	DESCRIPTION	QTY
1	10" O.D. x 0.385" W.T. API 5L PSL2, X42/X52 HFW PIPE	887'
2	INDUCTION BEND	7
3	TEST STATION	1
-	-	-
-	-	-



REVISIONS

NO.	DATE	BY	DESCRIPTION
0	02/24/2016	SRS	ISSUED FOR RECORD



LEGEND:
REFER TO INDEX SHEET

SCALES:
C-SIZE (18X24) = 1" = 300'
D-SIZE (36X24) = 1" = 200'

SCALE IN FEET

DRAWN BY	SRS	02/24/2015	PHOTO BY	
CHECKED BY	APB	02/24/2015	PLOT BY	SRS 02/23/16
APPROVED			DATE	

RECORD ALIGNMENT SHEET
10" INTERCONNECT PIPELINE
MP 0 TO MP 0.16
WILLIAMS COUNTY, NORTH DAKOTA

DWG. NO. 51465-INT-001 0 REV

