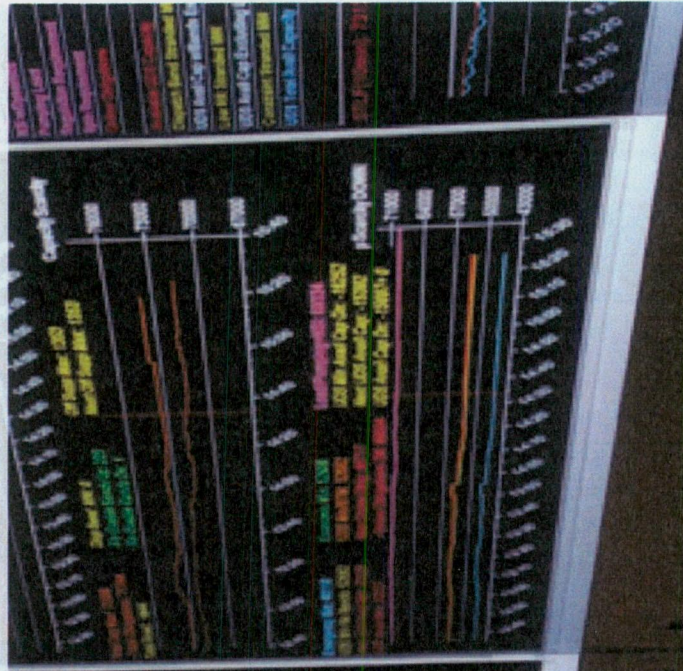


Resource Adequacy: 2013-14 Plan Year Planning Resource Auction (PRA) Results

MSC
April 30, 2013



2013-2014 Planning Resource Auction Summary

- Auction cleared sufficient resources to meet the system-wide and zonal resource requirements
 - Total Planning Resources offered were about 8,165 MW excess of the system requirement (i.e. PRMR)
 - None of the LRZ limits bound (unconstrained clearing of ZRC)
- Auction Offer Summary
 - 100% of eligible Market Participants (106)* submitted Offers
 - 97% of the total Planning Resources were offered
- Auction Clearing Price
 - All Local Resource Zones (LRZ) cleared at \$1.05/MW-Day
 - 96% of offers were either submitted as part of a Fixed Resource Adequacy Plan (FRAP) or were self-scheduled (offered at \$0/MW-Day)



* 179 Asset Owners with Confirmed Planning Resources

2013-2014 PRA Settlement Overview

- Cleared ZRC and PRMR volumes will be settled at the zonal Auction Clearing Price (ACP) on a daily basis beginning on June 1, 2013
- There will be no Zonal Deliverability Charges or Zonal Deliverability Benefits due to single ACP for all zones
- GMA where not needed for this auction due to single ACP for all zones
- No Load Serving Entities elected to pay the Capacity Deficiency Charge

2013-2014 PRA Summary

(Participation by Resource Type)

MISO System							
Resource Type	UCAP	Unconvrtd	FRAP	Offered	Cleared	%Cleared	ZRC Bal
Generation	100,413.2	2,573.9	31,836.0	65,639.5	58,882.1	93%	7,121.2
BTMG	4,009.4	179.9	1,826.8	1,908.1	1,565.8	3%	436.9
External Resources	4,257.1	208.0	1,296.5	2,711.3	1,806.8	3%	945.8
Demand Response (DR)	153.2	0.0	0.0	153.2	0.0	0%	153.2
Netted DR*					4,434.6	N/A	N/A
Energy Efficiency Resources (EER)	0.0	0.0	0.0	0.0	0.0	0%	0.0
Netted EER*					105.6	N/A	N/A
Total	108,832.9	2,961.8	34,959.3	70,412.1	62,254.7	100%	8,657.1
%UCAP		3%	32%	65%	57%	89%	8%

- Values in table are in megawatts unless noted as a percentage
- Netted DR and EERs are used in the PRMR calculation and not included in total cleared.
- %Cleared = (FRAP + Cleared) / (Total FRAP + Total Cleared)



2013-2014 Zonal PRA Results

Local Resource Zone (LRZ)	Z1 (MN, ND, Western WI)	Z2 (Eastern WI, Upper MI)	Z3 (IA)	Z4 (IL)	Z5 (MO)	Z6 (IN, KY)	Z7 (MI)	System
PRMR (Obligation)	17,693.4	13,362.9	9,343.1	10,733.9	9,000.2	19,320.3	22,702.3	102,156.2
Netted DR/EER*	1,197.1	728.7	528.8	112.3	0	1191.7	781.6	4,547.2
Adjusted PRMR (Obligation)	16,387.3	12,573.2	8,767.6	10,612.1	9,000.2	18,023.3	21,850.3	97,214
Total Offer + FRAP	17,957.1	14,367.8	9,809.4	12,868.6	8,292.2	19,217.2	22,859.1	105,371.4
Total Offer Cleared								62,254.7
Offer Cleared + FRAP	16,635.6	13,420.7	8,920.0	10,887.0	8,033.5	17,750.8	21,566.4	97,214
LCR	15,707.7	10,326.2	6,796.4	5,231.9	5,490.7	14,283.5	21,055.0	N/A
Import Level (CIL)	4,085.0	4,144.0	3,717.0	6,614.0	5,035.0	6,838.0	4,576.0	N/A
Export Level (CEL)	1,416.0	1,766.0	1,612.0	2,230.0	1,616.0	3,432.0	4,306.0	N/A
Import/-Export	-248.3	-847.5	-152.4	-274.9	966.7	272.5	283.9	0.0
ACP (\$/MW-Day)	1.05	1.05	1.05	1.05	1.05	1.05	1.05	
Deficient Amt.	0.0	0.0	0.0	0.0	0.0	0.0	0.0	0.0

*PRM and Transmission losses are not applied to Netted DR and EERs in the PRMR calculation.

- Values in table in are in megawatts unless noted otherwise



Acronym List

- CIL – Capacity Import Limit
- CEL – Capacity Export Limit
- EER – Energy Efficiency Resource
- FRAP – Fixed Resource Adequacy Plan
- LCR – Local Clearing Requirement
- LRZ – Local Resource Zone
- MECT – Module E Capacity Tracking tool
- MP – Market Participant
- PRA – Planning Resource Auction
- PRMR – Planning Reserve Margin Requirement
- SAWG – Supply Adequacy Working Group