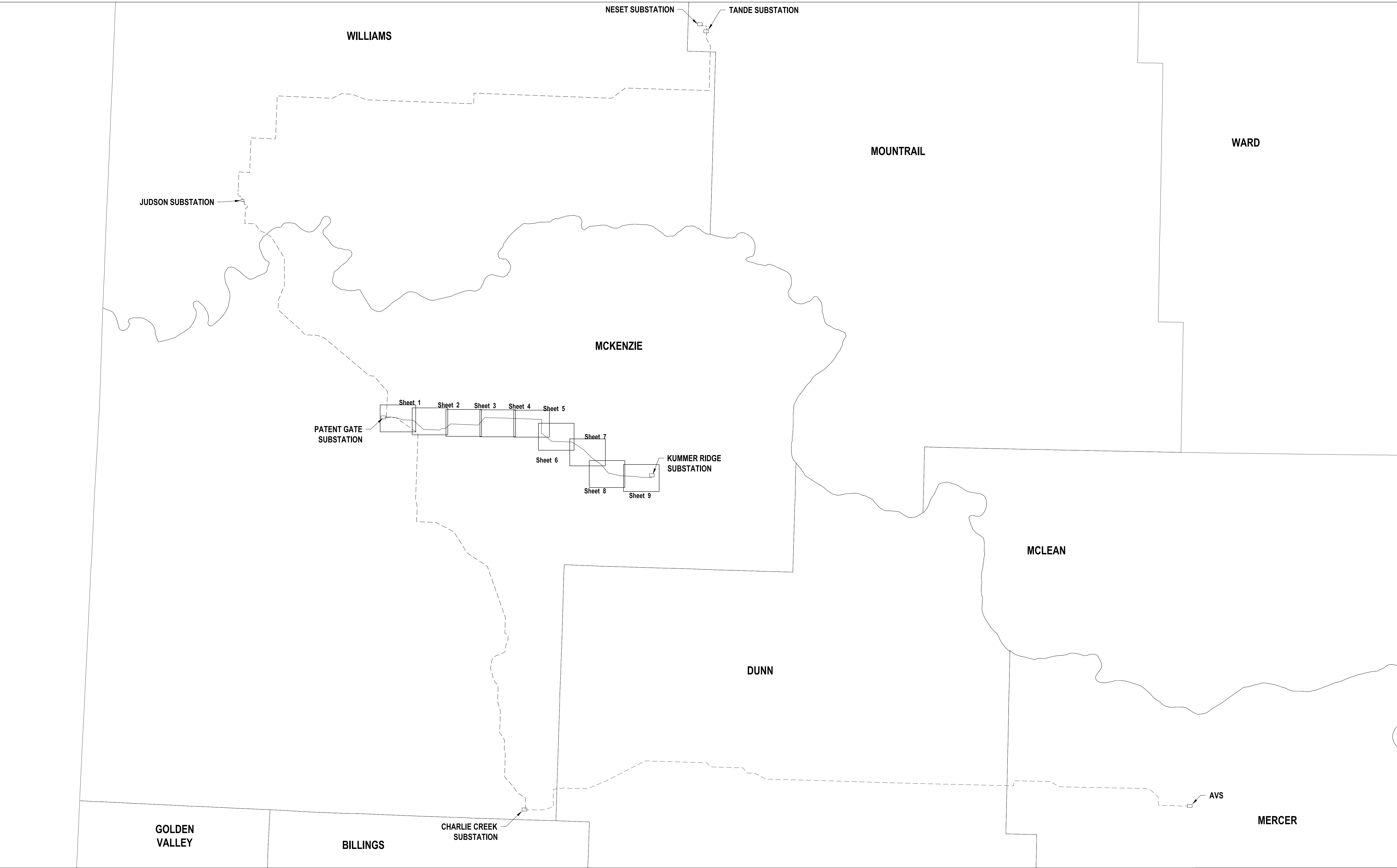


**BASIN ELECTRIC POWER COOPERATIVE
CASE NO. PU-14-813**

**ASBUILT
PLAN AND PROFILES AND STRUCTURE LOCATIONS FOR
NORTH KILLDEER LOOP PHASE 1
345kV TRANSMISSION PROJECT**

LINE 368 - PATENT GATE TO KUMMER RIDGE SEGMENT

**NORTH DAKOTA PUBLIC SERVICE COMMISSION
FEBRUARY 2017**





Basis of Bearing is NAD83 ND State Plane North Zone - International Feet. All distances are Ground Distance. Combined scale factor = 0.99985172

SEC. 26, 35 & 36 - T151N-R100W
 SEC. 31 & 32 - T151N-R99W
 MCKENZIE COUNTY, NORTH DAKOTA

NOTE:
 ASBUILT STRUCTURE PLACEMENT AS OF 2-1-2017

PSC SUBMITTAL FOR LINE 368
 CASE #PU-14-813
 345KV TRANSMISSION LINE



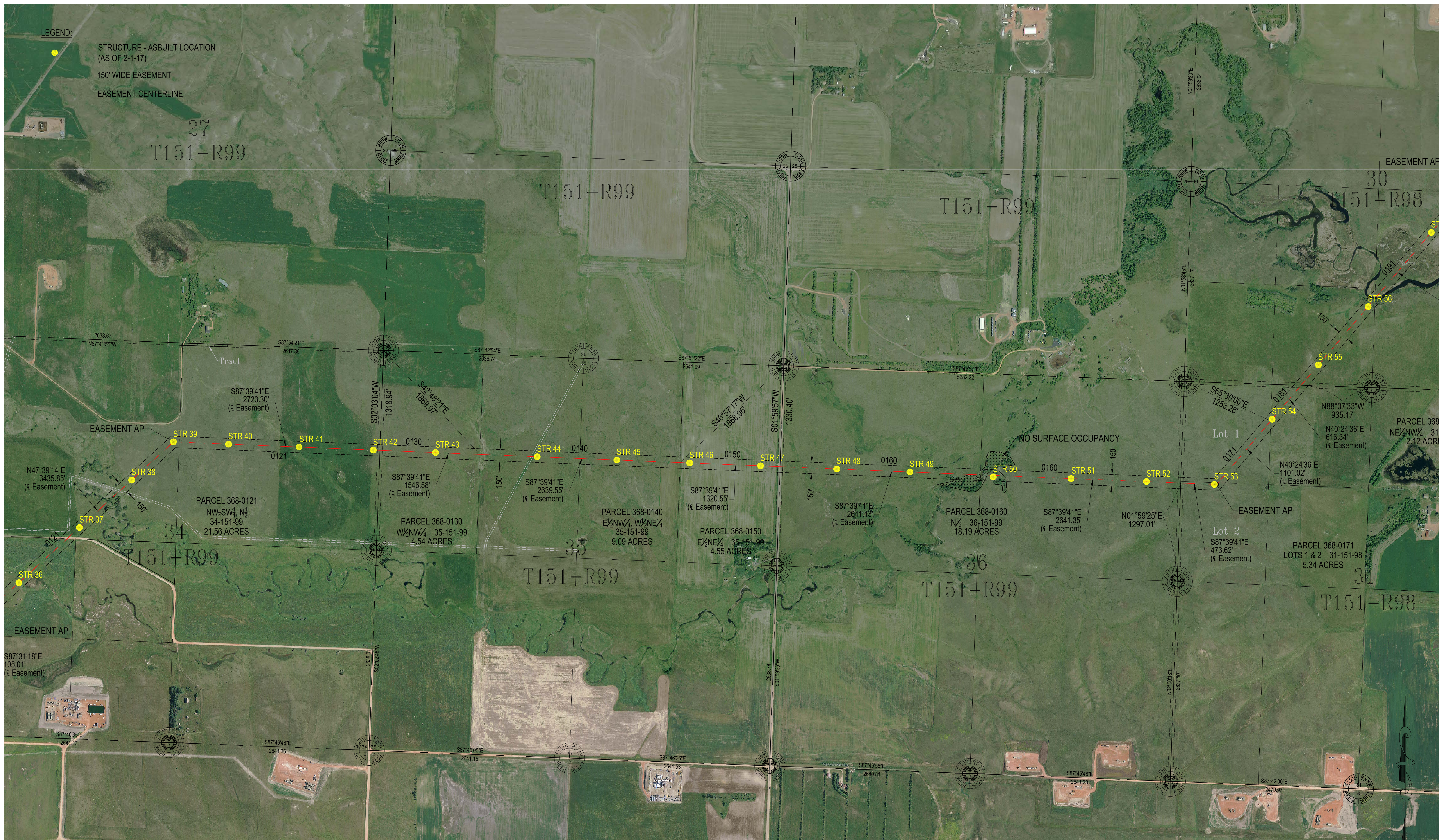


Basis of Bearing is NAD83 ND State Plane North Zone - International Feet. All distances are Ground Distance. Combined scale factor = 0.99985172

SEC. 32, 33, 34 & 35 - T151N-R99W
MCKENZIE COUNTY, NORTH DAKOTA

NOTE:
ASBUILT STRUCTURE PLACEMENT AS OF 2-1-2017

PSC SUBMITTAL FOR LINE 368
CASE #PU-14-813
345kV TRANSMISSION LINE
BASIN ELECTRIC POWER COOPERATIVE
A Touchstone Energy Cooperative

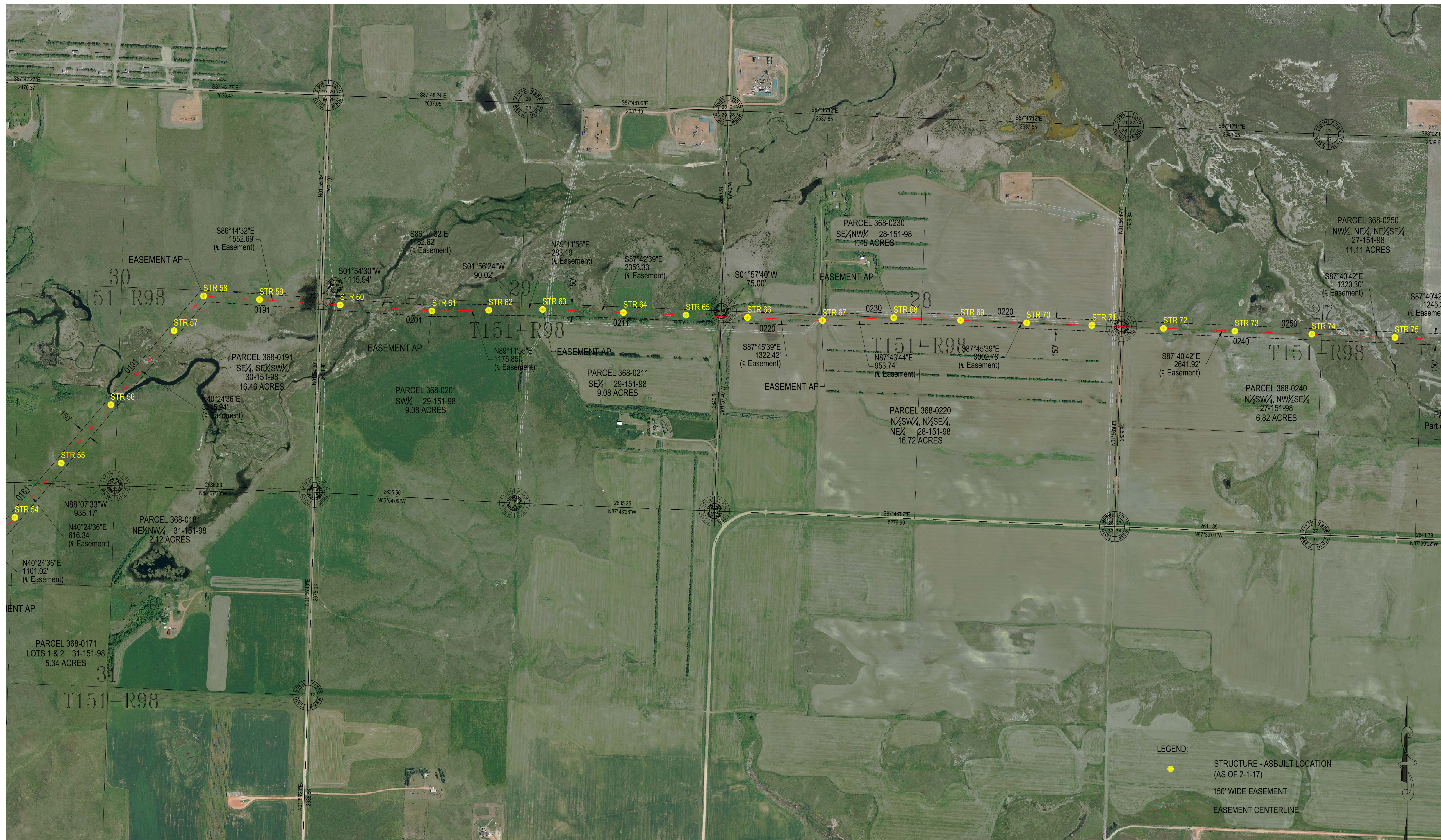


Basis of Bearing is NAD83 ND State Plane North Zone - International Feet. All distances are Ground Distance. Combined scale factor = 0.99985172

SEC. 35 & 36 - T151N-R99W
 SEC. 29, 30 & 31 - T151N-R98W
 MCKENZIE COUNTY, NORTH DAKOTA

NOTE:
 ASBUILT STRUCTURE PLACEMENT AS OF 2-1-2017

PSC SUBMITTAL FOR LINE 368
 CASE #PU-14-813
 345kV TRANSMISSION LINE
**BASIN ELECTRIC
 POWER COOPERATIVE**
 A Touchstone Energy Cooperative



Basis of Bearing is NAD83 ND State Plane North Zone - International Feet. All distances are Ground Distance. Combined scale factor = 0.99985172

SEC. 26, 27, 28 & 29 - T151N-R98W
MCKENZIE COUNTY, NORTH DAKOTA

NOTE:
ASBUILT STRUCTURE PLACEMENT AS OF 2-1-2017


PSC SUBMITTAL FOR LINE 368
CASE #PU-14-813
345kV TRANSMISSION LINE
**BASIN ELECTRIC
POWER COOPERATIVE**
A Touchstone Energy Cooperative

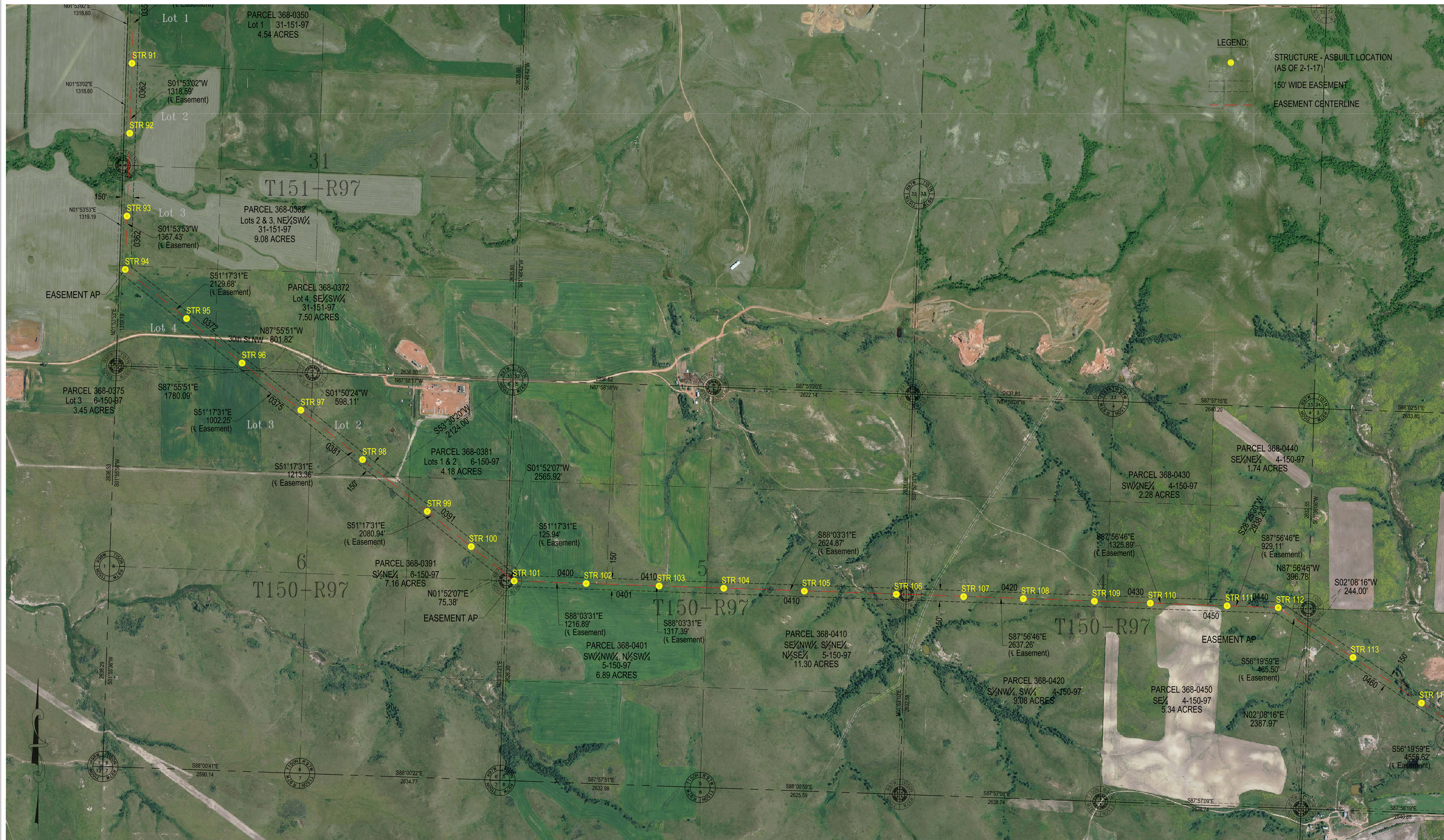


Basis of Bearing is NAD83 ND State Plane North Zone - International Feet. All distances are Ground Distance. Combined scale factor = 0.99985172

SEC. 25 & 26 - T151N-R96W
 SEC. 30 & 31 - T151N-R97W
 MCKENZIE COUNTY, NORTH DAKOTA

NOTE:
 ASBUILT STRUCTURE PLACEMENT AS OF 2-1-2017

PSC SUBMITTAL FOR LINE 368
 CASE #PU-14-813
 345kV TRANSMISSION LINE
 **BASIN ELECTRIC POWER COOPERATIVE**
 A Touchstone Energy Cooperative

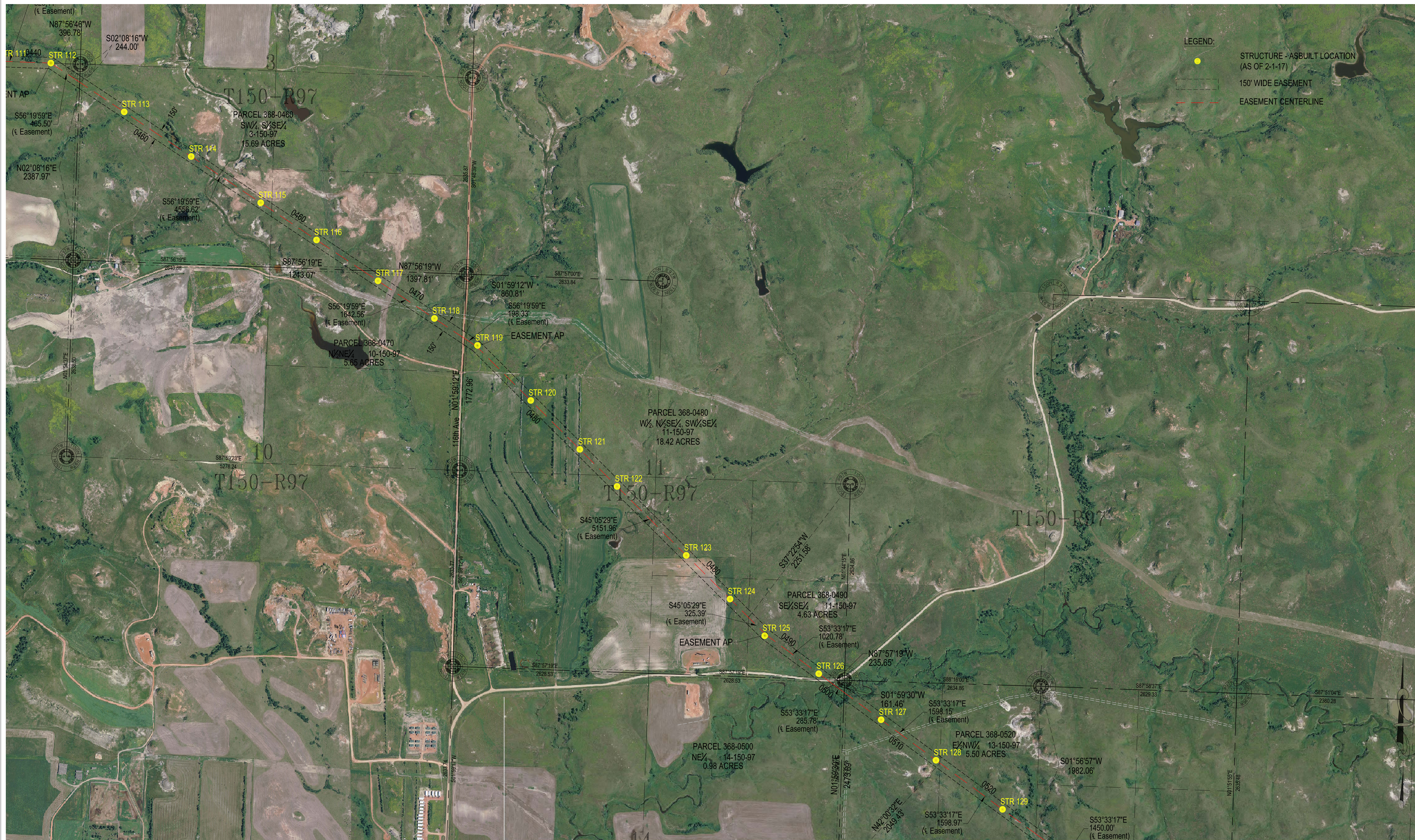


Basis of Bearing is NAD83 ND State Plane North Zone - International Feet. All distances are Ground Distance. Combined scale factor = 0.99985172

SEC. 3, 4, 5 & 6 - T150N-R97W
MCKENZIE COUNTY, NORTH DAKOTA

NOTE:
ASBUILT STRUCTURE PLACEMENT AS OF 2-1-2017

PSC SUBMITTAL FOR LINE 368
CASE #PU-14-813
345kV TRANSMISSION LINE
**BASIN ELECTRIC
POWER COOPERATIVE**
A Touchstone Energy Cooperative



LEGEND:
 ● STRUCTURE - ASBUILT LOCATION (AS OF 2-1-17)
 --- 150' WIDE EASEMENT
 - - - EASEMENT CENTERLINE

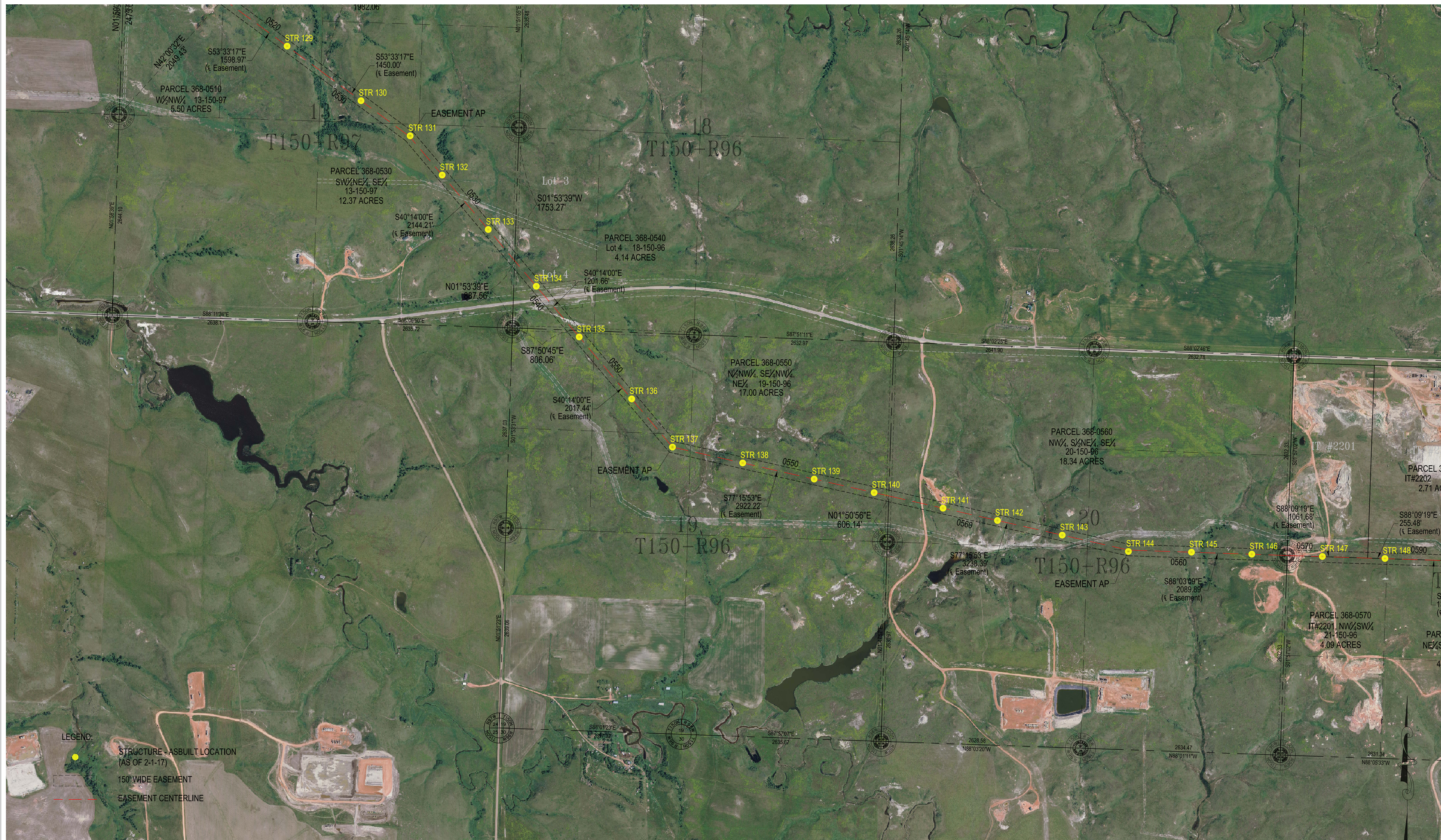
Basis of Bearing is NAD83 ND State Plane North Zone - International Feet. All distances are Ground Distance. Combined scale factor = 0.99985172

SEC. 10, 11, 13 & 14 - T150N-R97W
 MCKENZIE COUNTY, NORTH DAKOTA

NOTE:
 ASBUILT STRUCTURE PLACEMENT AS OF 2-1-2017

PSC SUBMITTAL FOR LINE 368
 CASE #PU-14-813
 345kV TRANSMISSION LINE
**BASIN ELECTRIC
 POWER COOPERATIVE**
 A Touchstone Energy Cooperative

SHEET 7 OF 9 REV. NO. 0

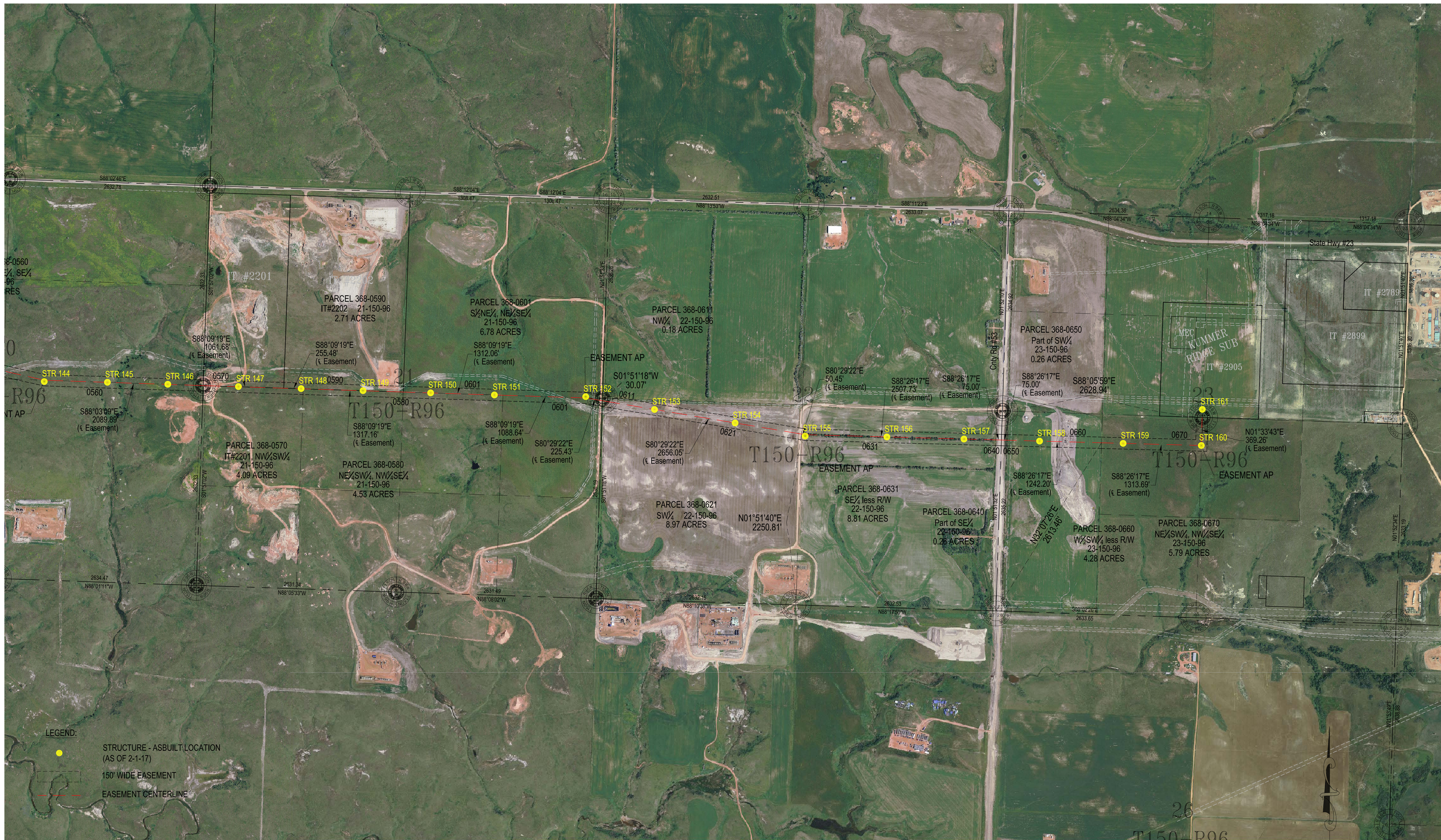


Basis of Bearing is NAD83 ND State Plane North Zone - International Feet. All distances are Ground Distance. Combined scale factor = 0.99985172

SEC. 18, 19, 20 & 21 - T150N-R96W
 SEC. 13 - T150N-R97W
 MCKENZIE COUNTY, NORTH DAKOTA

NOTE:
 STRUCTURE PLACEMENT AS OF 2-1-2017

PSC SUBMITTAL FOR LINE 368
 CASE #PU-14-813
 345kV TRANSMISSION LINE
**BASIN ELECTRIC
 POWER COOPERATIVE**
 A Touchstone Energy Cooperative



Basis of Bearing is NAD83 ND State Plane North Zone - International Feet. All distances are Ground Distance. Combined scale factor = 0.99985172

SEC. 21, 22 & 23 - T150N-R96W
MCKENZIE COUNTY, NORTH DAKOTA

NOTE:
ASBUILT STRUCTURE PLACEMENT AS OF 2-1-2017

PSC SUBMITTAL FOR LINE 368
CASE #PU-14-813
345kV TRANSMISSION LINE

