

**BASIN ELECTRIC- PIONEER GENERATION
STATION PHASE III**

INTERIM CONSTRUCTION INSPECTION REPORT

GENERAL INFORMATION

Inspector Name: Dave Hennen, ProSource Technologies	Inspection Date: 1-05-16	Report Number: PU-14-829
Weather: Sunny, 12 degrees F	Precipitation: 0.00	

DAILY CONSTRUCTION ACTIVITIES

ProSource Technologies, LLC (ProSource) conducted an Interim Construction Inspection on behalf of the North Dakota Public Service Commission for the Basin Electric Power Cooperative Pioneer Generation Station Phase III Project (Project) on January 5, 2016. The Project consists of the construction, operation, and maintenance of 12 new Reciprocating Internal Combustion Engines (RICE) at the existing Pioneer Generation Station located approximately 15 miles northwest of the City of Williston, ND (Photos 1 and 2). The Project will have the capability of generating up to 111 megawatts (MW) of electricity and is designed to produce electricity ranging from 3 to 111 MW. The new engines will occupy approximately 8.2 acres within the energy conversion facility area. The new engines are being installed adjacent to the three existing 45 MW simple-cycle combustion turbines located on the site. In addition, approximately 711 feet of 6-inch diameter natural gas pipeline, approximately 0.5 miles of 115kV electric transmission line, approximately 408 feet of 3-inch water line, an approximately 0.9-acre storm water pond, and an approximately 3.7-acre switchyard are being constructed as part of the Project.

Construction of the Project commenced during the week of May 4, 2015. According to the Monthly Progress Report from December 2015, construction of the Project was approximately 70% complete at the time of the Interim Construction Inspection.

Mr. Dave Hennen, ProSource Director of Environmental Services, met with Mr. Cris Miller, Basin Electric Senior Environmental Project Administrator; Mr. John Madison, Basin Electric Environmental Project Coordinator; Mr. Mark Winn, Basin Electric Construction Coordinator; and Mr. Johnny Godwin, Burns and McDonnell Construction Manager for the construction inspection. Following a brief inspection meeting, Mr. Winn and Mr. Madison accompanied Mr. Hennen during the Project inspection activities. The inspection commenced with a tour inside the generation station facilities. The new engines are located in two connected buildings, with six engines located in the North Engine Building (Photo 3) and six engines located in the South Engine Building (Photo 4). The current activities in these buildings included electrical work associated with the engine installation. Other activities inside the facility included construction of the Administration areas (Photo 5) and Control Room (Photo 6). After inspecting facilities and activities inside the buildings, Mr. Hennen inspected several areas outside of the buildings, including stormwater facilities, soil piles, the pipeline corridor, and the electric transmission line route. During site preparation work, Best Management Practices (BMPs) were installed which included straw waddles in ditches (Photo 7) and silt fencing around the perimeter of the Project (Photo 8). After removing the topsoil from work areas, the topsoil piles were seeded to minimize wind and stormwater erosion (Photo 9).

At the time of the Interim Construction Inspection, the switchyard was approximately 90% complete (Photo 10) and the stormwater pond and drains were installed (Photo 11). The water line and natural gas pipeline were installed, backfilled and restored prior to the inspection (Photo 12). The electric transmission line route was staked and the construction process had commenced (Photo 13). The parking and staging areas were well maintained (Photo 14).

The inspection identified no instances of non-compliance.

Concerns and Corrective Actions

- No concerns were identified during the Interim Construction Site Inspection.

Limiting Factors

- Snow and frozen ground conditions limited inspections of the ground features.

SIGNATURE

Inspector Name: Dave Hennen	Signature: <i>Dave Hennen</i>	Date: 1-12-16
-----------------------------	-------------------------------	---------------

63 PU-14-829 Filed: 1/12/2016 Pages: 8
Interim construction inspection report

PHOTOGRAPHS

Report Prepared By: _____ Inspection Date: 1/0

**BASIN ELECTRIC- PIONEER GENERATION
STATION PHASE III**

INTERIM CONSTRUCTION INSPECTION REPORT



Photo 1 – View of Pioneer Generation Station Phase III facilities



Photo 2 – View of Pioneer Generation Station Phase III facilities

PHOTOGRAPHS

Report Prepared By:

Inspection Date: 1/05/16

Docket Number PU-14-829

**BASIN ELECTRIC- PIONEER GENERATION
STATION PHASE III**

INTERIM CONSTRUCTION INSPECTION REPORT



Photo 3 – View of engines in the North Engine Building



Photo 4 – View of engines in the South Engine Building

PHOTOGRAPHS

Report Prepared By:

Inspection Date: 1/05/16

Docket Number PU-14-829

**BASIN ELECTRIC- PIONEER GENERATION
STATION PHASE III**

INTERIM CONSTRUCTION INSPECTION REPORT

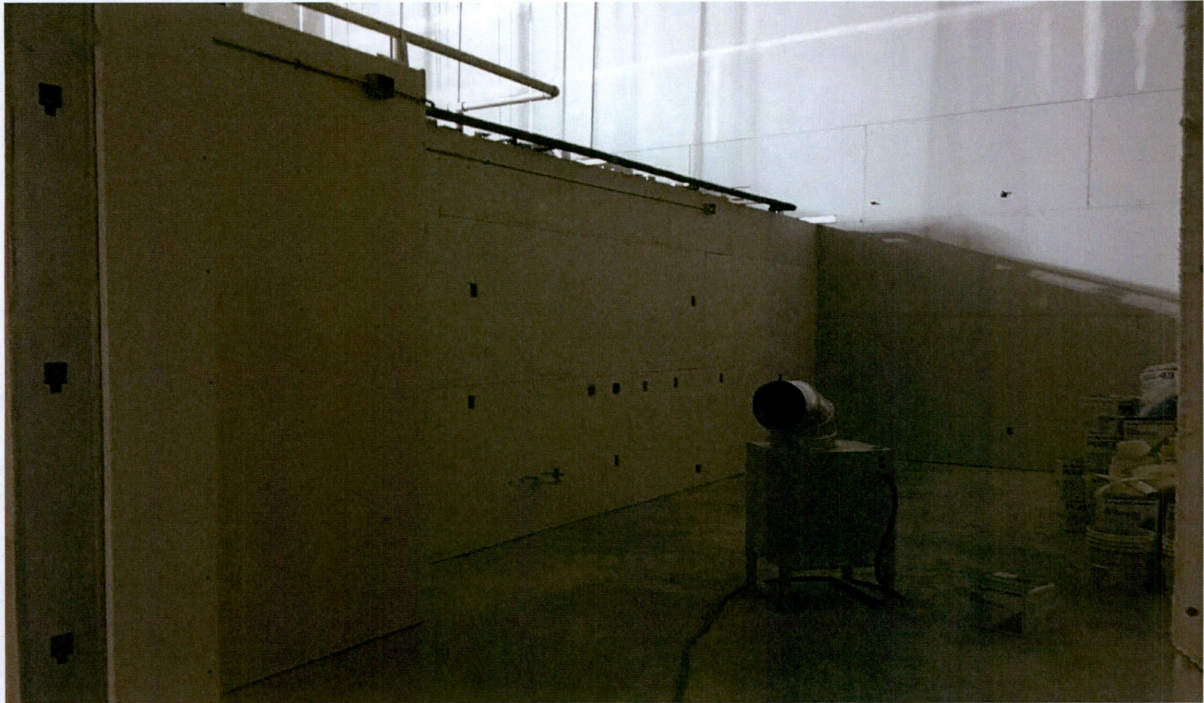


Photo 5 – View of Administration areas under construction

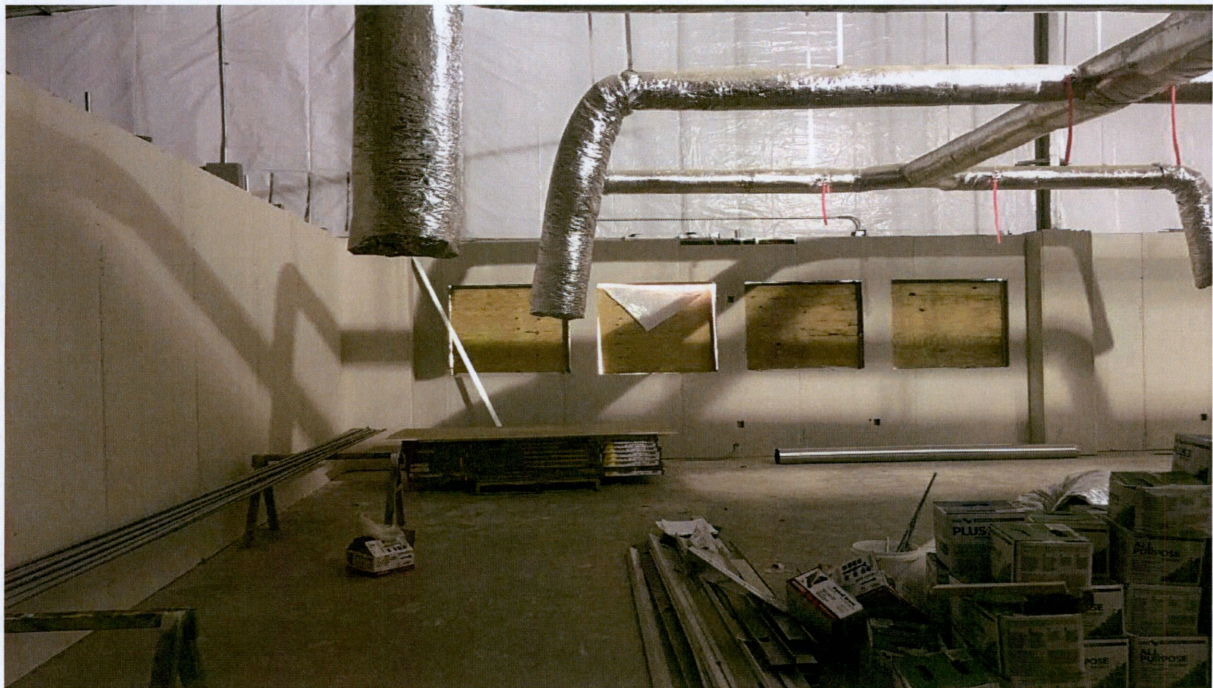


Photo 6 – View of Control Room under construction

PHOTOGRAPHS

Report Prepared By:

ProSource
TECHNOLOGIES

Inspection Date: 1/05/16

Docket Number PU-14-829

**BASIN ELECTRIC- PIONEER GENERATION
STATION PHASE III**

INTERIM CONSTRUCTION INSPECTION REPORT



Photo 7 – View of BMP (straw wattle) in ditch adjacent to road



Photo 8 – View of silt fence along the perimeter of the site

PHOTOGRAPHS

Report Prepared By:

Inspection Date: 1/05/16

Docket Number PU-14-829

**BASIN ELECTRIC- PIONEER GENERATION
STATION PHASE III**

INTERIM CONSTRUCTION INSPECTION REPORT



Photo 9 – View of seeded topsoil pile



Photo 10 – View of switchyard

PHOTOGRAPHS

Report Prepared By:

Inspection Date: 1/05/16

Docket Number PU-14-829

**BASIN ELECTRIC- PIONEER GENERATION
STATION PHASE III**

INTERIM CONSTRUCTION INSPECTION REPORT



Photo 11 –View of stormwater pond



Photo 12 – View of natural gas line route

**BASIN ELECTRIC- PIONEER GENERATION
STATION PHASE III**

INTERIM CONSTRUCTION INSPECTION REPORT



Photo 13 – View of electric transmission line construction



Photo 14 – View of parking and staging area