

STATE OF NORTH DAKOTA
PUBLIC SERVICE COMMISSION

Montana-Dakota Utilities Co., a Division of
MDU Resources Group, Inc.
BNSF Railway Company – Burleigh County
Public Convenience & Necessity

Case No. PU-14-830

NOTICE OF OPPORTUNITY FOR HEARING

January 7, 2015

On December 5, 2014, Montana-Dakota Utilities Co., a Division of MDU Resources Group, Inc., an electric public utility, filed an application under Chapter 49-03, N.D.C.C. to extend service to BNSF Railway Company at a location in Burleigh County, North Dakota.

Submitted with the application was a statement by BNSF Railway Company that the customer desires electric service to be provided by the applicant. Service is to be provided at a point located in:

**Section 34, Township 139N, Range 77W, Burleigh County,
North Dakota.**

Montana-Dakota Utilities Co., a Division of MDU Resources Group, Inc., has made a prima facie showing that it should serve the customer.

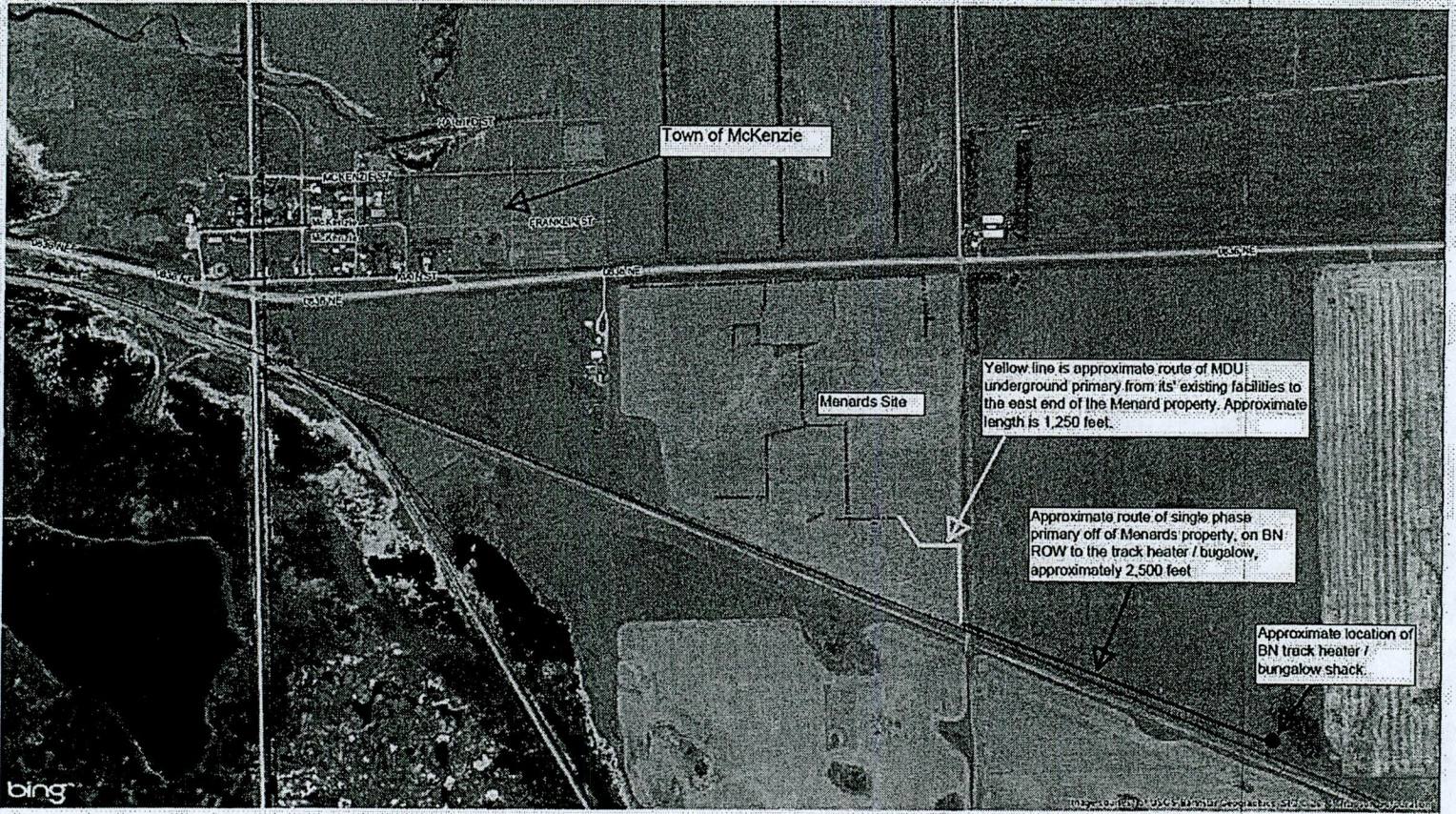
Any interested party has the right to file written objection, based on the issue of public convenience and necessity, with the Commission by **January 28, 2015**, and the matter will then be set for hearing. If no objections are received by that date, the application may be granted as requested.

PUBLIC SERVICE COMMISSION


Randy Christmann
Commissioner


Julie Fedorchak
Chairman


Brian P. Kalk
Commissioner



Town of McKenzie

Menards Site

Yellow line is approximate route of MDU underground primary from its existing facilities to the east end of the Menard property. Approximate length is 1,250 feet.

Approximate route of single phase primary off of Menards property, on BN ROW to the track heater / bungalow, approximately 2,500 feet

Approximate location of BN track heater / bungalow shack.

bing

EXHIBIT A