

**Legend**

- Dore Loop Centerline
- Market Center (Musket Lateral/ Dore Segment Corridor)

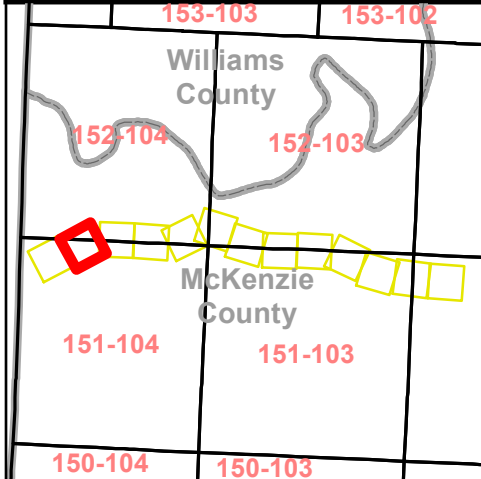
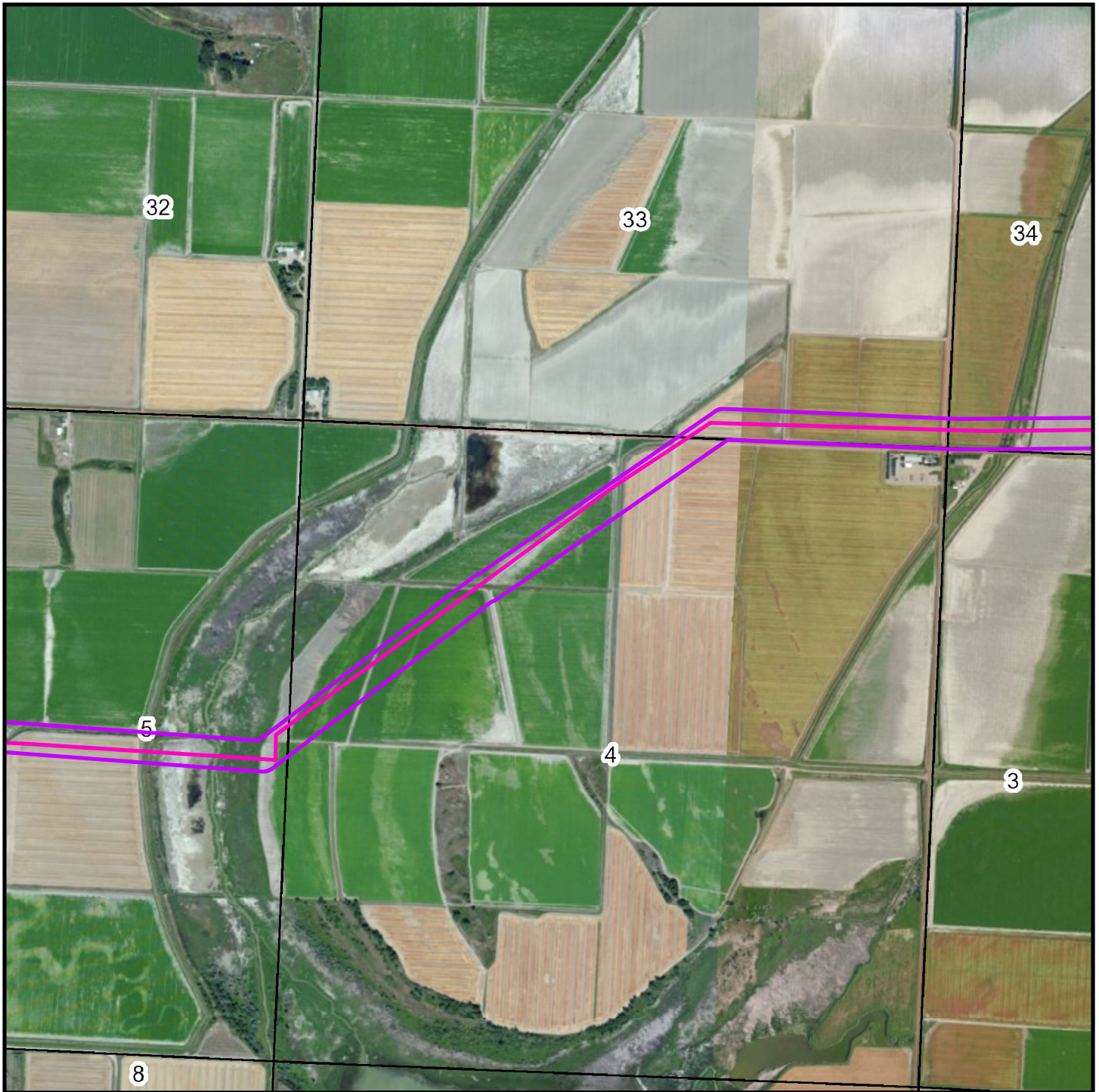
**Exhibit A**

N



0 500 1,000 2,000  
Feet

**PU-14-840**  
**Dore Loop Crude Oil Pipeline**  
**McKenzie County**


Page 1 of 13




**Legend**

-  Dore Loop Centerline
-  Market Center (Musket Lateral/ Dore Segment Corridor)

**N**

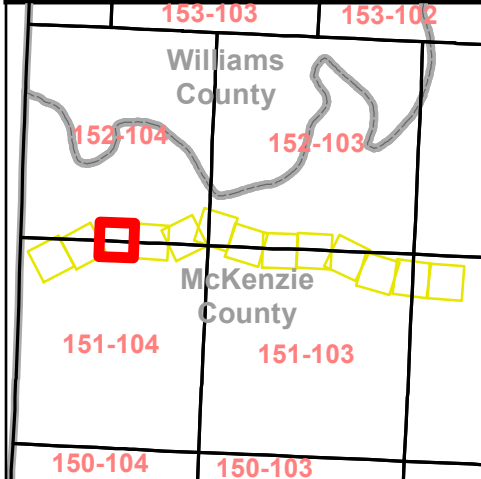


0 500 1,000 2,000  
Feet





**PU-14-840**  
**Dore Loop Crude Oil Pipeline**  
**McKenzie County**


Page 2 of 13




**Legend**

-  Dore Loop Centerline
-  Market Center (Musket Lateral/ Dore Segment Corridor)

N

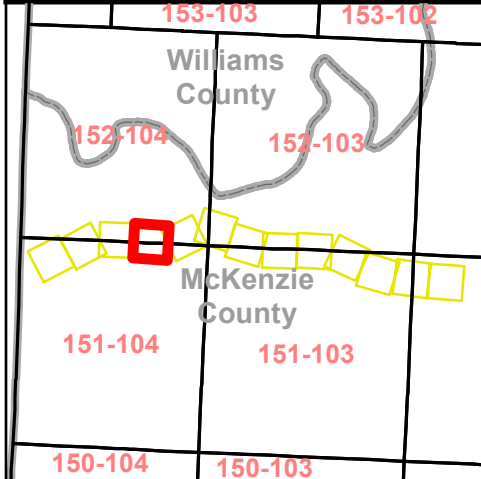
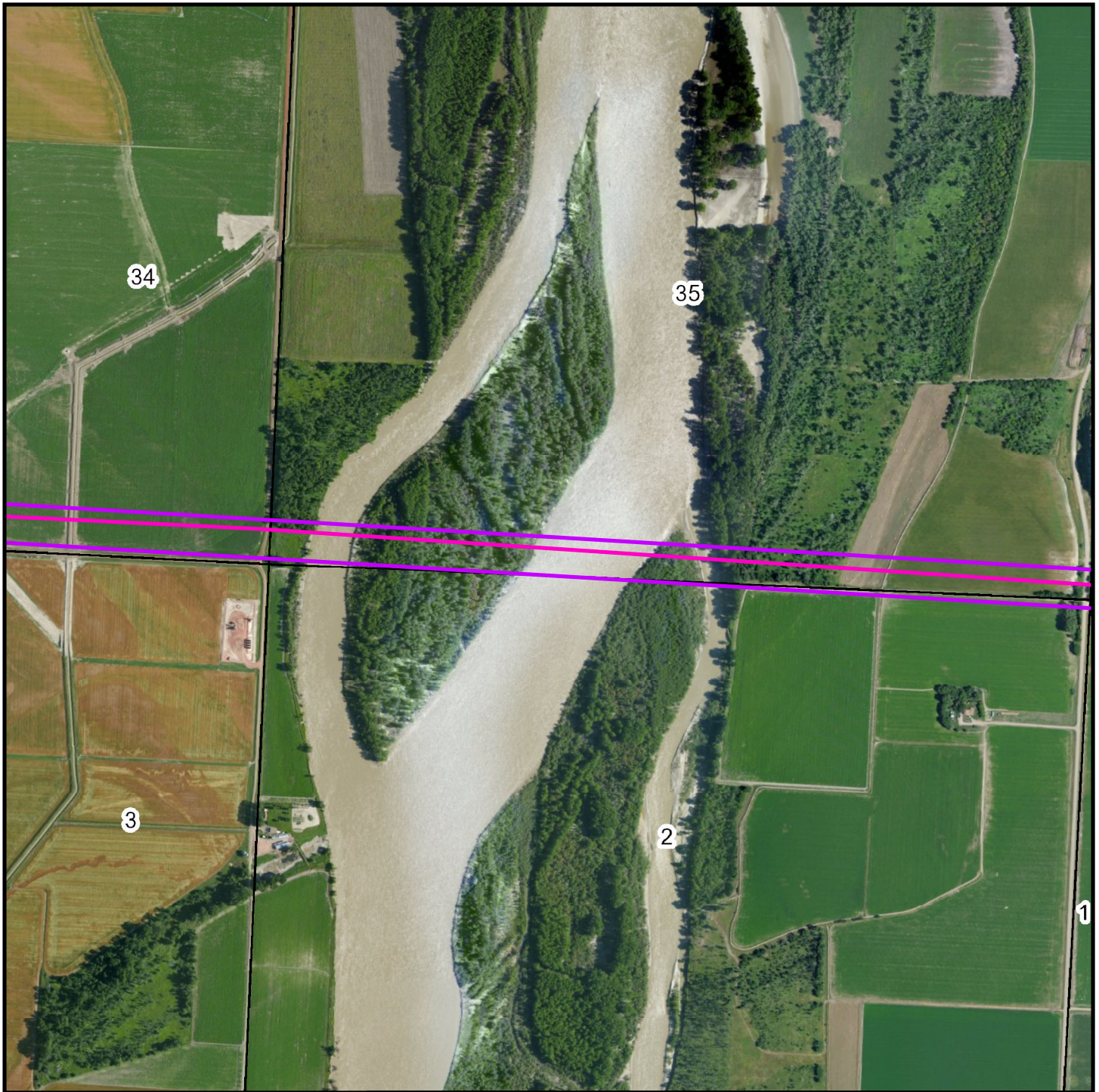


0 410 820 1,640  
Feet





**PU-14-840**  
**Dore Loop Crude Oil Pipeline**  
**McKenzie County**


Page 3 of 13




**Legend**

-  Dore Loop Centerline
-  Market Center (Musket Lateral/  
Dore Segment Corridor)

N

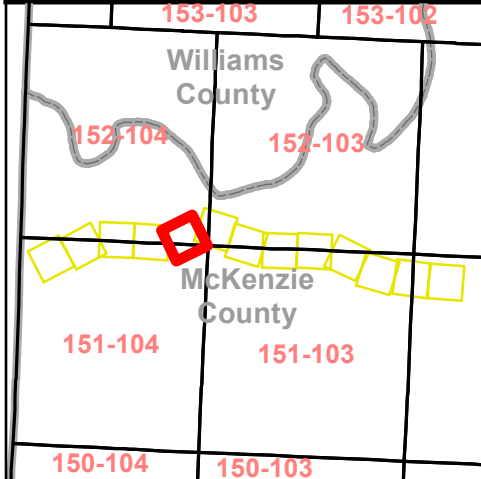
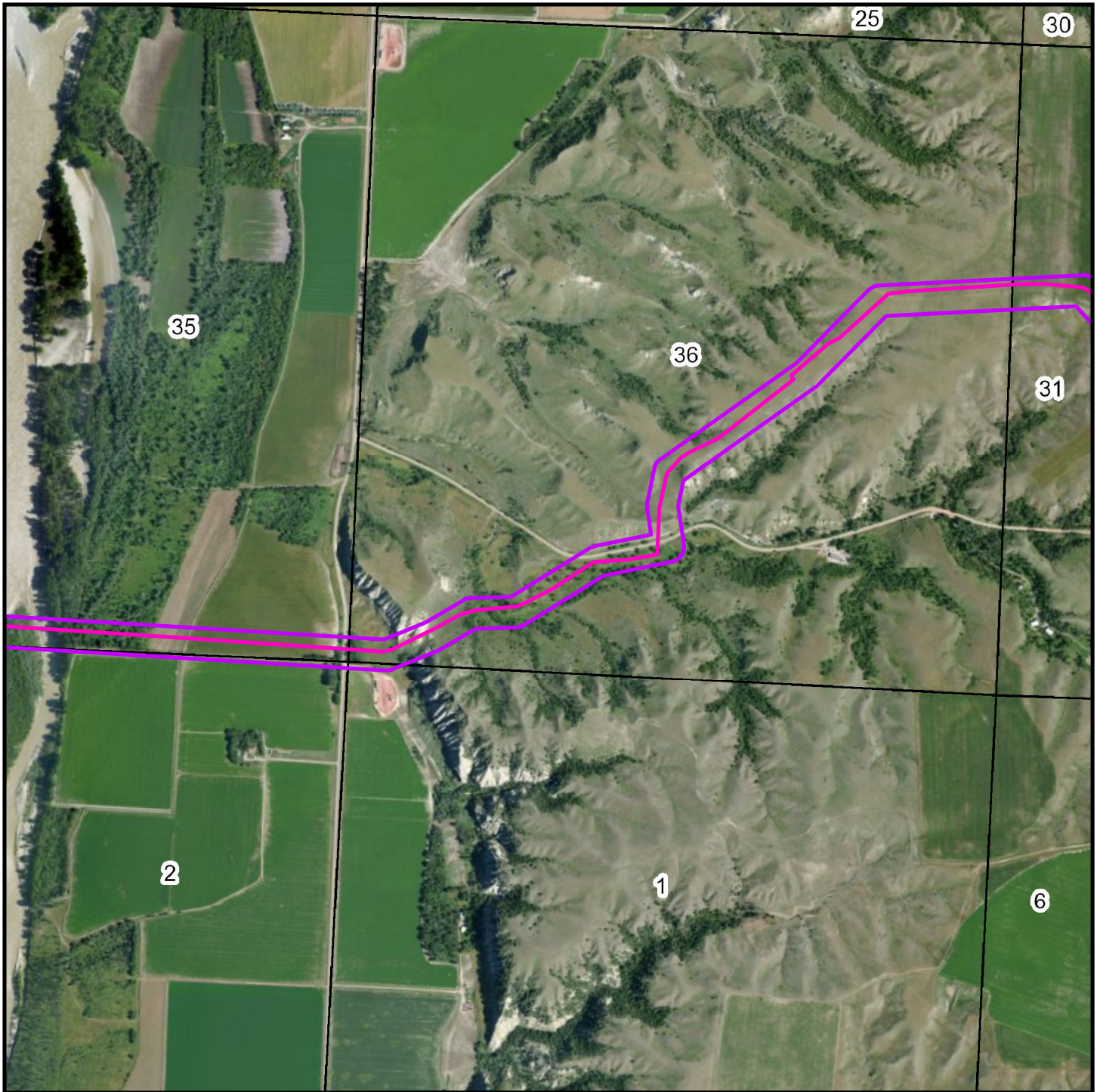


0 425 850 1,700  
Feet



**PU-14-840**  
**Dore Loop Crude Oil Pipeline**  
**McKenzie County**

Page 4 of 13



**Legend**

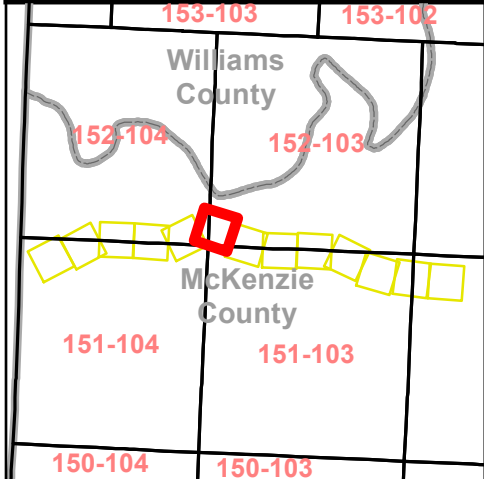
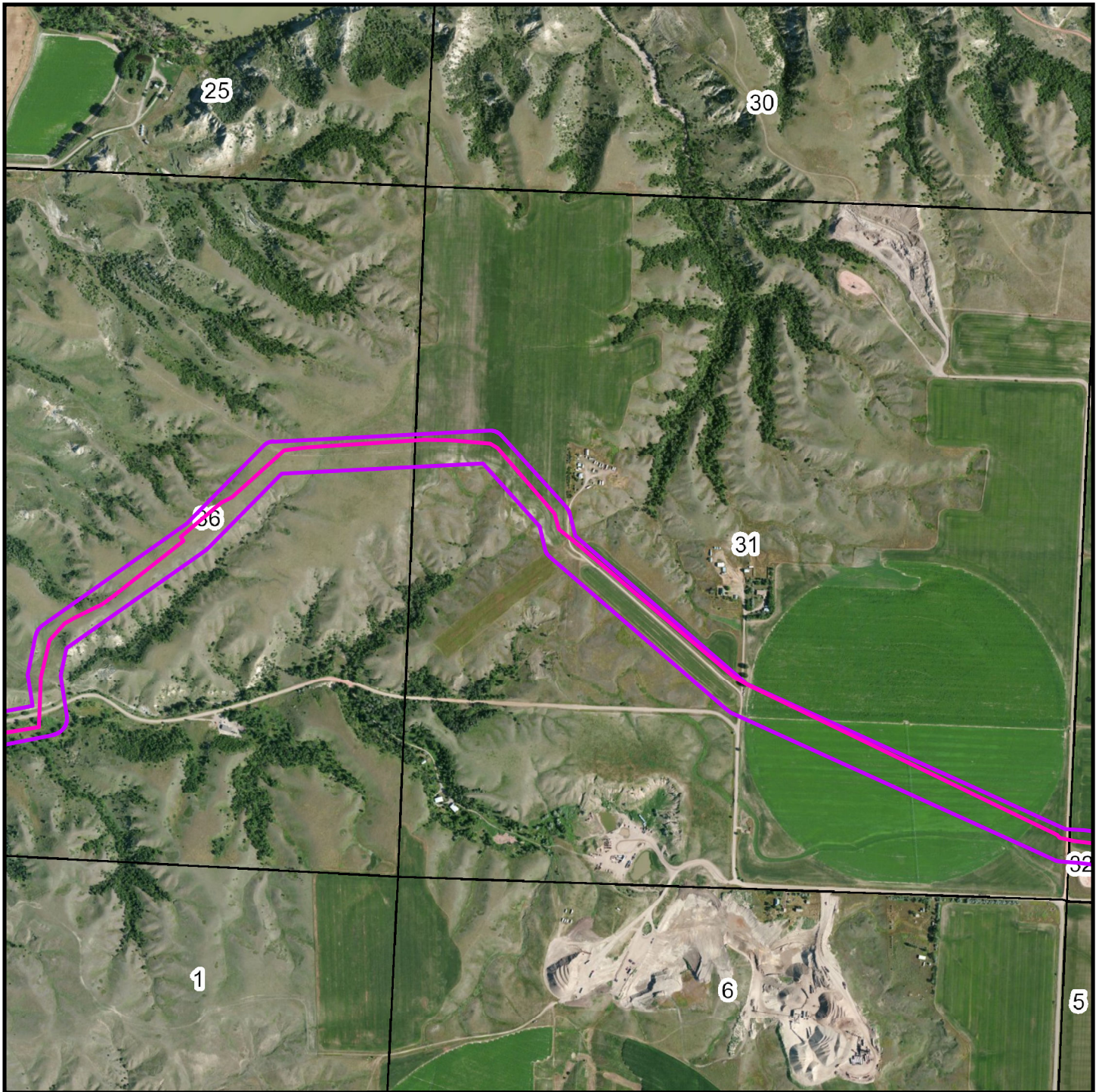
- Dore Loop Centerline
- Market Center (Musket Lateral/  
Dore Segment Corridor)

N

0 500 1,000 2,000  
Feet

**PU-14-840**  
**Dore Loop Crude Oil Pipeline**  
**McKenzie County**

Page 5 of 13




**Legend**

- Dore Loop Centerline
- Market Center (Musket Lateral/ Dore Segment Corridor)

N

0 500 1,000 2,000  
Feet



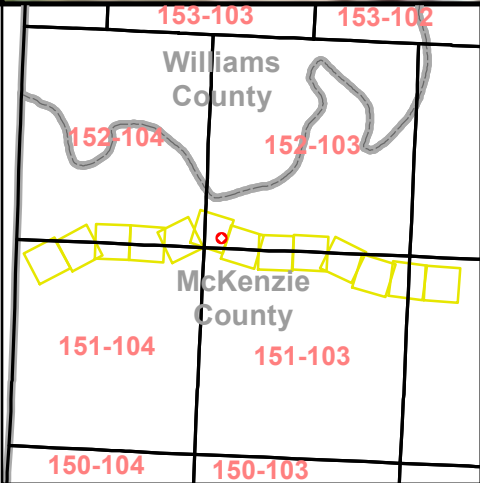
**PU-14-840**  
**Dore Loop Crude Oil Pipeline**  
**McKenzie County**

Page 6 of 13



CE^æf /æ^æ[ !^å

31



**Legend**

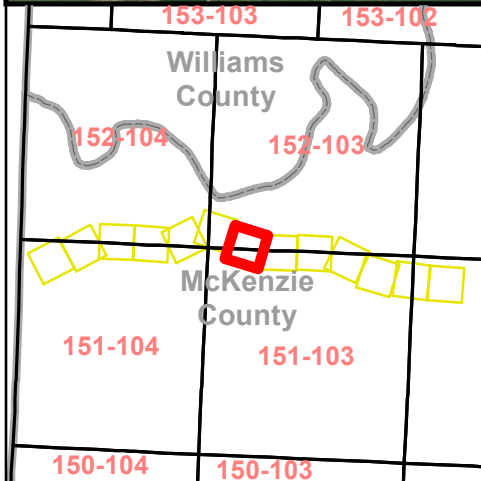
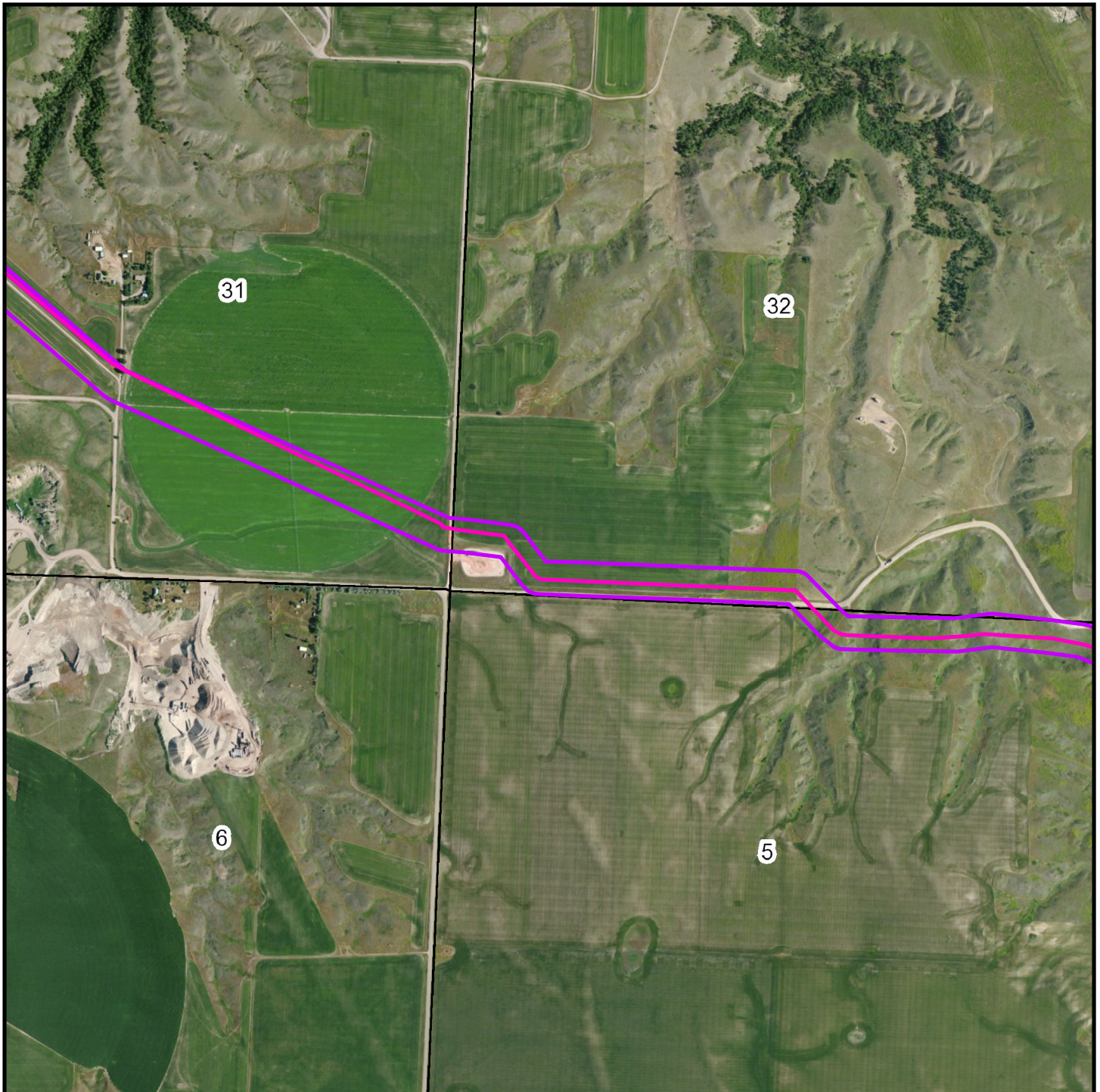
- Dore Loop Centerline
- Market Center (Musket Lateral/ Dore Segment Corridor)

N



0 10 20 40  
Feet

**PU-14-840**  
**Dore Loop Crude Oil Pipeline**  
**McKenzie County**


Page 6(a) of 13




**Legend**

-  Dore Loop Centerline
-  Market Center (Musket Lateral/ Dore Segment Corridor)

N

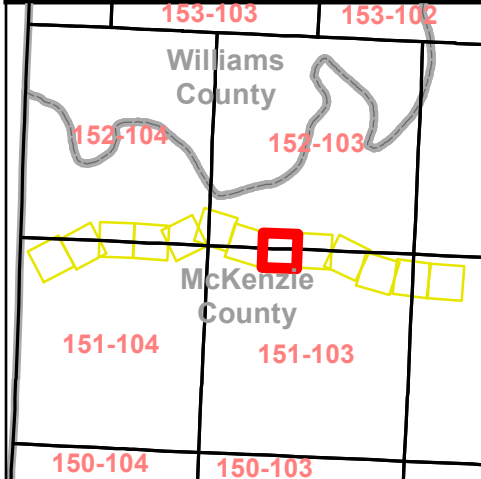
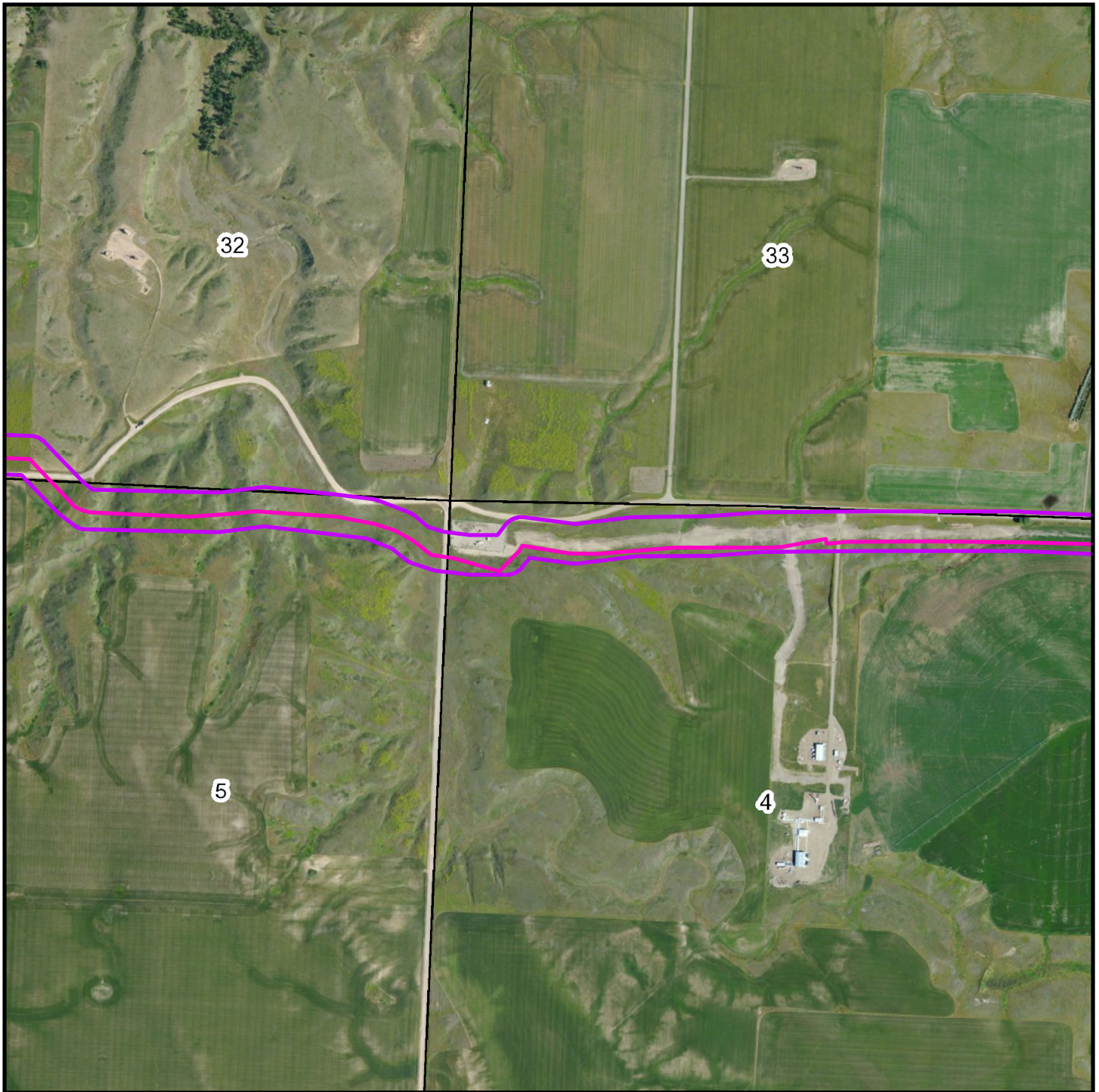


0 495 990 1,980  
Feet





**PU-14-840**  
**Dore Loop Crude Oil Pipeline**  
**McKenzie County**


Page 7 of 13



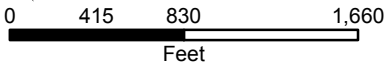

**Legend**

-  Dore Loop Centerline
-  Market Center (Musket Lateral/ Dore Segment Corridor)

N



0 415 830 1,660  
Feet

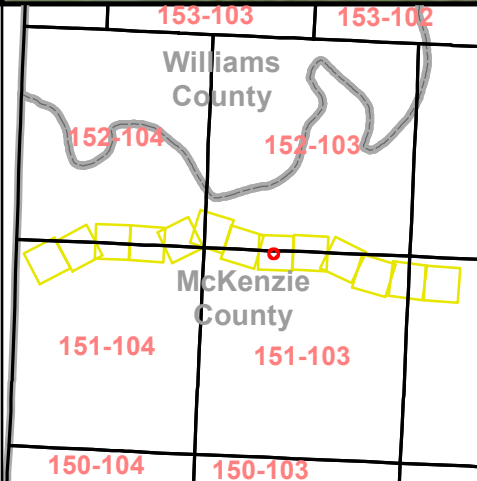
**PU-14-840**  
**Dore Loop Crude Oil Pipeline**  
**McKenzie County**

Page 8 of 13



Area to be bored

4



**Legend**

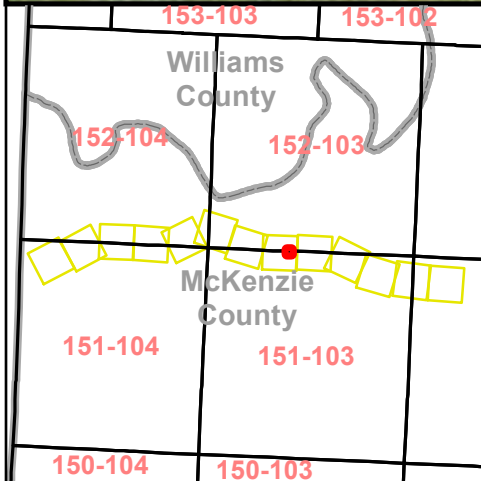
- Dore Loop Centerline
- Market Center (Musket Lateral/ Dore Segment Corridor)

N

0 15 30 60  
Feet



**PU-14-840**  
**Dore Loop Crude Oil Pipeline**  
**McKenzie County**



**Legend**

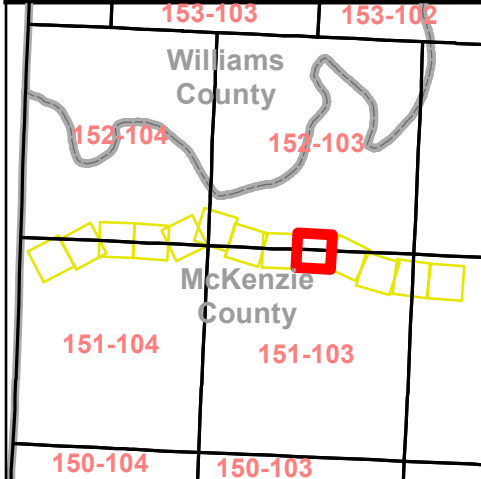
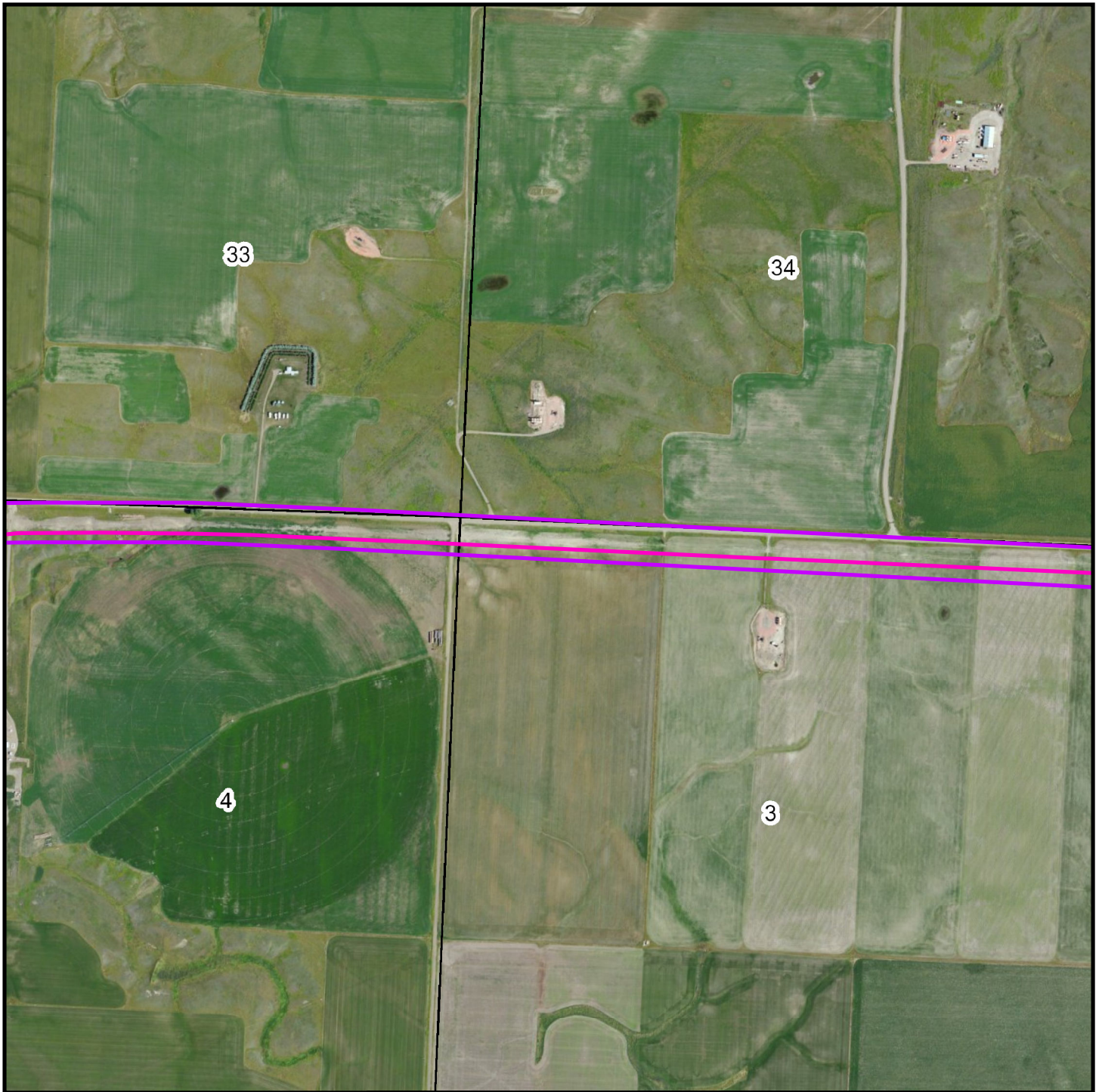
- Dore Loop Centerline
- Market Center (Musket Lateral/ Dore Segment Corridor)

N



0 37.5 75 150  
Feet

**PU-14-840**  
**Dore Loop Crude Oil Pipeline**  
**McKenzie County**


Page 8(b) of 13




**Legend**

-  Dore Loop Centerline
-  Market Center (Musket Lateral/ Dore Segment Corridor)

**N**

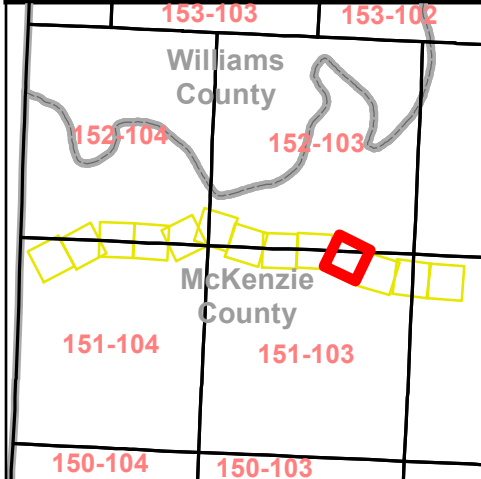
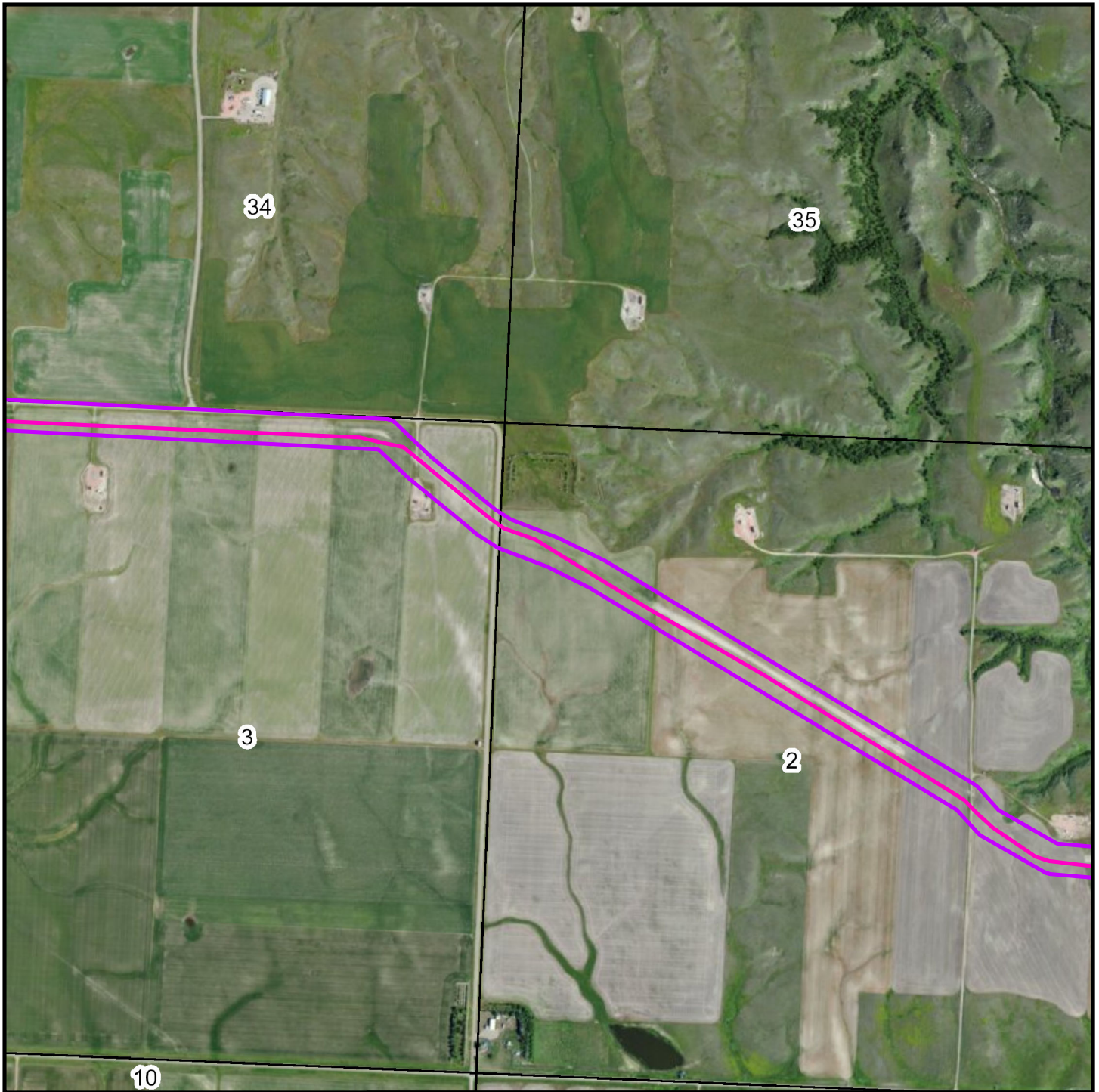


0 415 830 1,660  
Feet





**PU-14-840**  
**Dore Loop Crude Oil Pipeline**  
**McKenzie County**


Page 9 of 13




**Legend**

-  Dore Loop Centerline
-  Market Center (Musket Lateral/ Dore Segment Corridor)

**N**

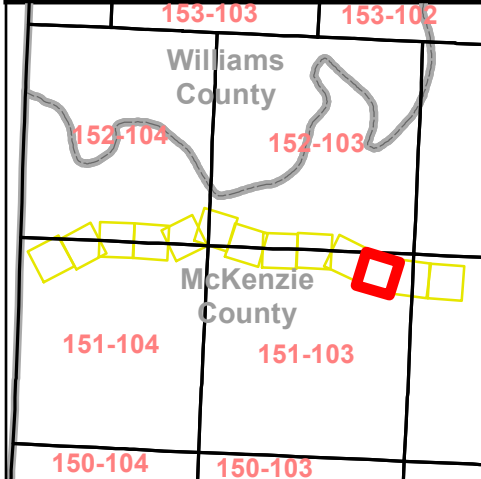


0 500 1,000 2,000  
Feet





**PU-14-840**  
**Dore Loop Crude Oil Pipeline**  
**McKenzie County**


Page 10 of 13




**Legend**

-  Dore Loop Centerline
-  Market Center (Musket Lateral/ Dore Segment Corridor)

**N**

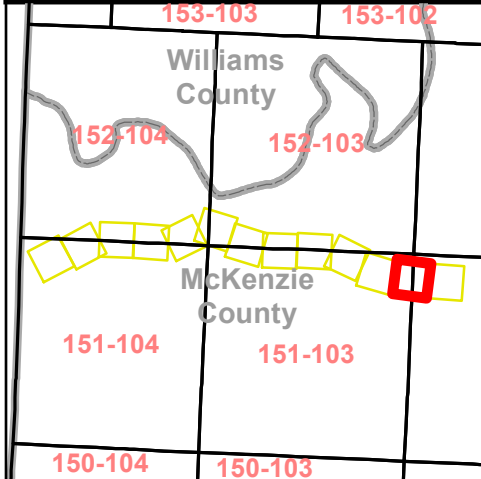


0 500 1,000 2,000  
Feet





**PU-14-840**  
**Dore Loop Crude Oil Pipeline**  
**McKenzie County**


Page 11 of 13



**Legend**


-  Dore Loop Centerline
-  Market Center (Musket Lateral/ Dore Segment Corridor)

**N**



0      445      890      1,780

Feet



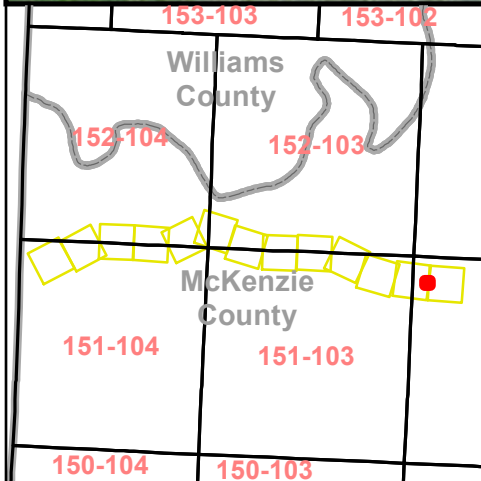
**PU-14-840**  
**Dore Loop Crude Oil Pipeline**  
**McKenzie County**

Page 12 of 13





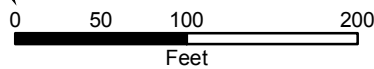
Area to be bored

6

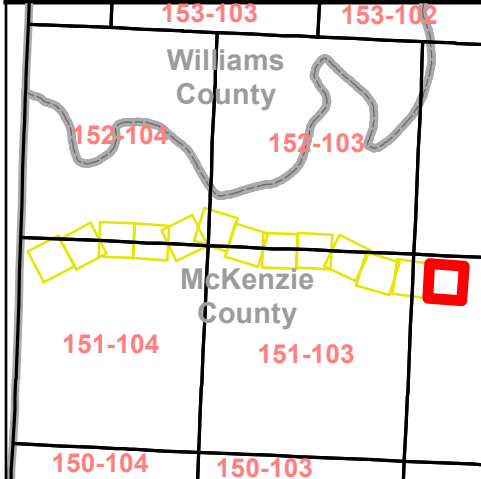
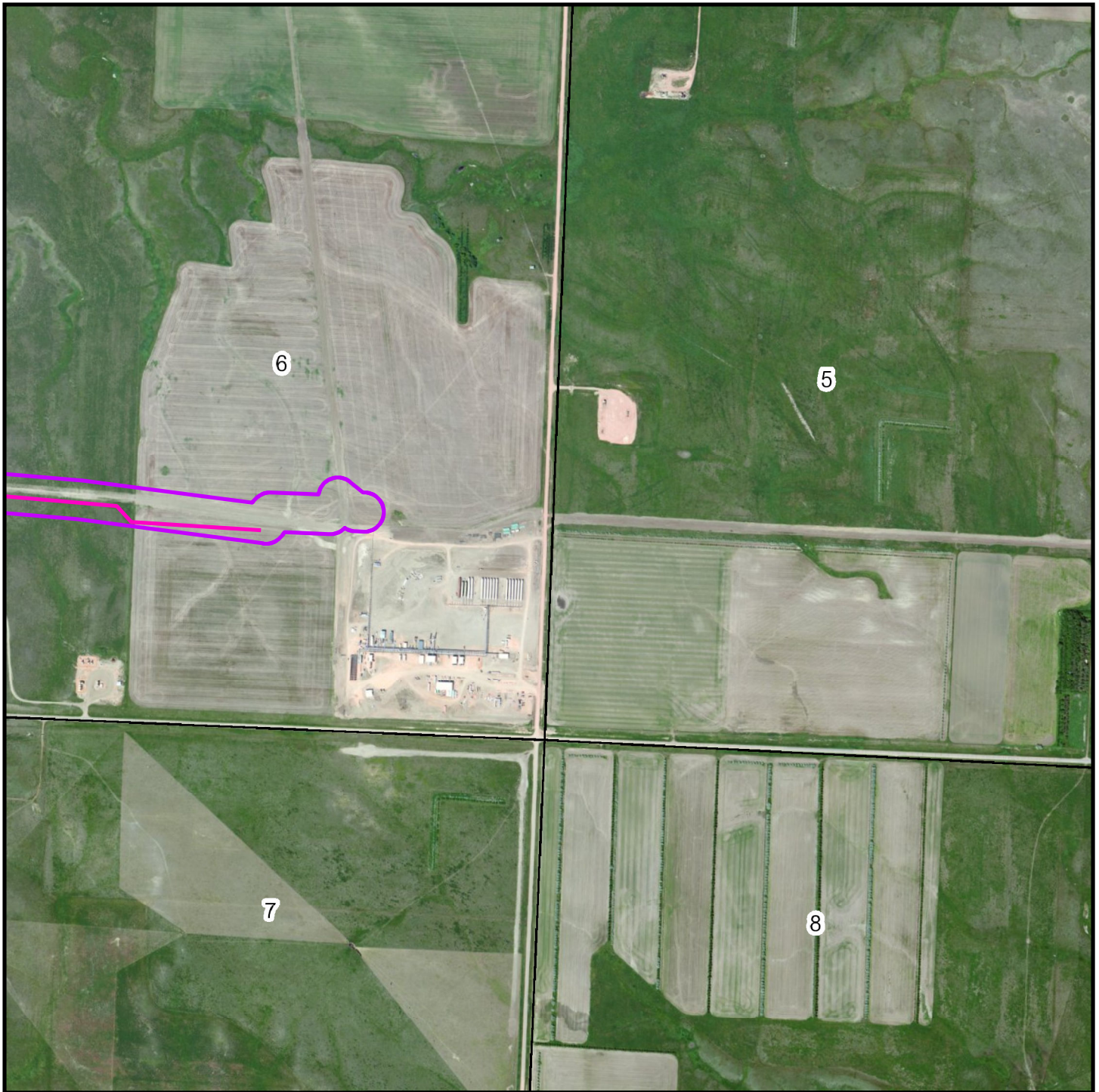


**Legend**



-  Dore Loop Centerline
-  Market Center (Musket Lateral/ Dore Segment Corridor)




**PU-14-840**  
**Dore Loop Crude Oil Pipeline**  
**McKenzie County**



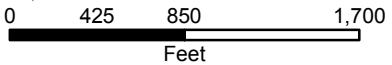

**Legend**

-  Dore Loop Centerline
-  Market Center (Musket Lateral/ Dore Segment Corridor)

N



0 425 850 1,700  
Feet

**PU-14-840**  
**Dore Loop Crude Oil Pipeline**  
**McKenzie County**

Page 13 of 13