

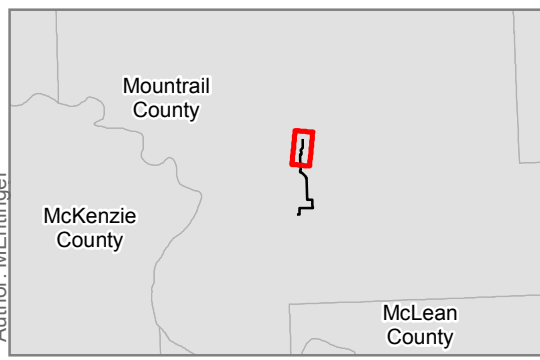
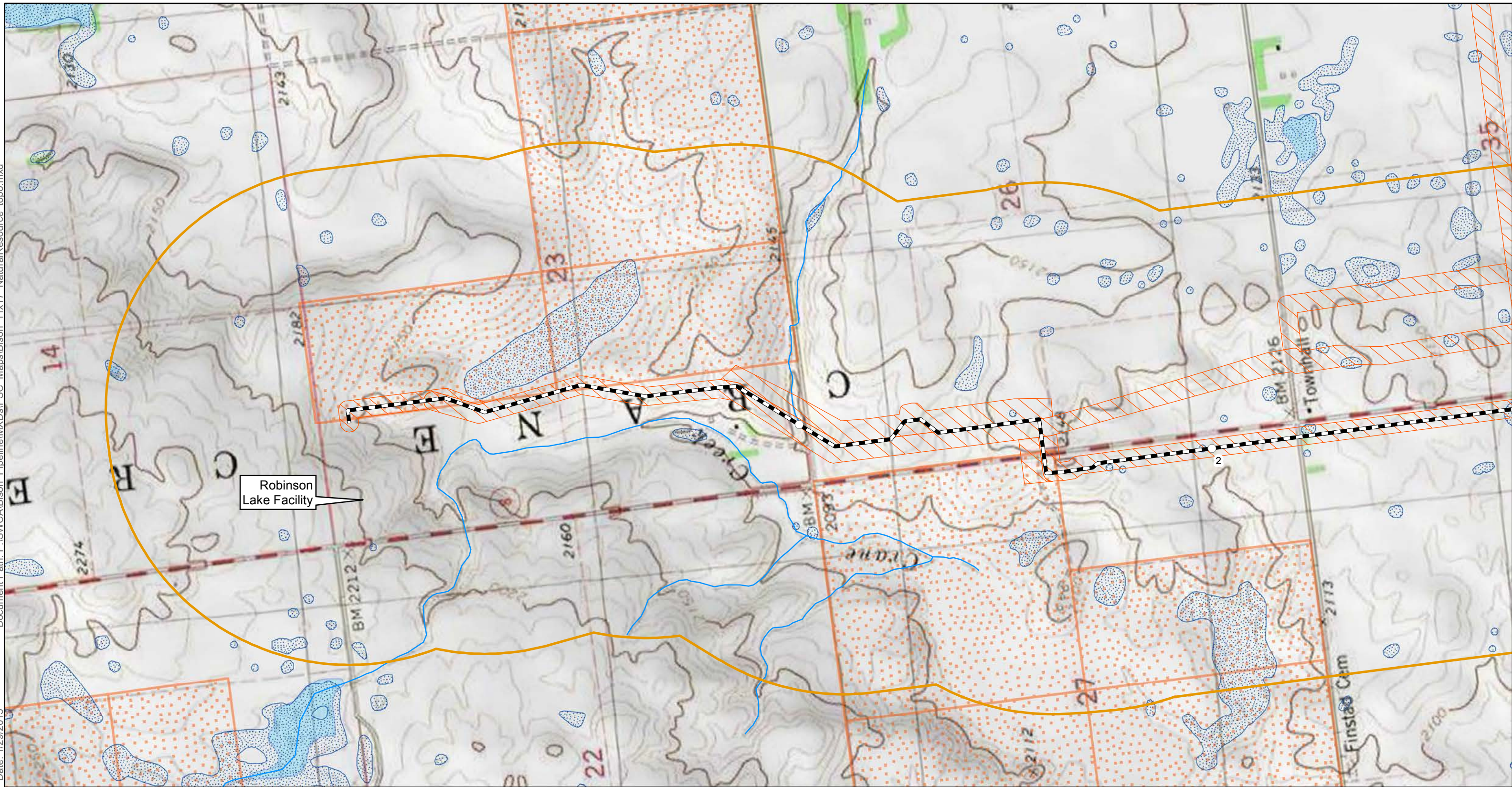
Appendix B

Project Maps

Document Path: P:\SWCA\Bison_Pipeline\MXD\PS_C_Maps\Bison_11x17_NaturalResource_topo.mxd

Date: 1/29/2015

Author: MEntinger



Valve	NHD Waterbody	Native American Land
Milepost	NDGS Landslide Deposits	Private Conservation Land
Centerline	North Dakota Mineral Trust Lands	State Land
Survey Corridor	Criteria Data	PLOTS Land
Corridor (1 mile)	Federal Land	Abandoned Mine
NHD Waterway	Joint Ownership	
NWI Wetland	Local Land	

1:12,000

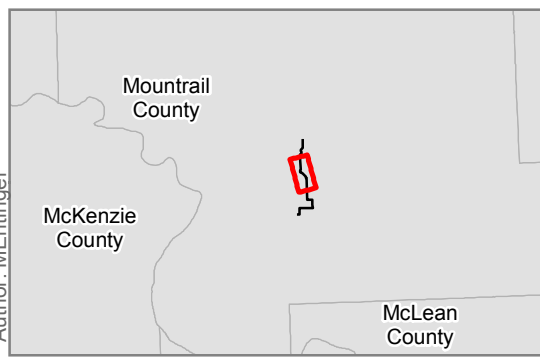
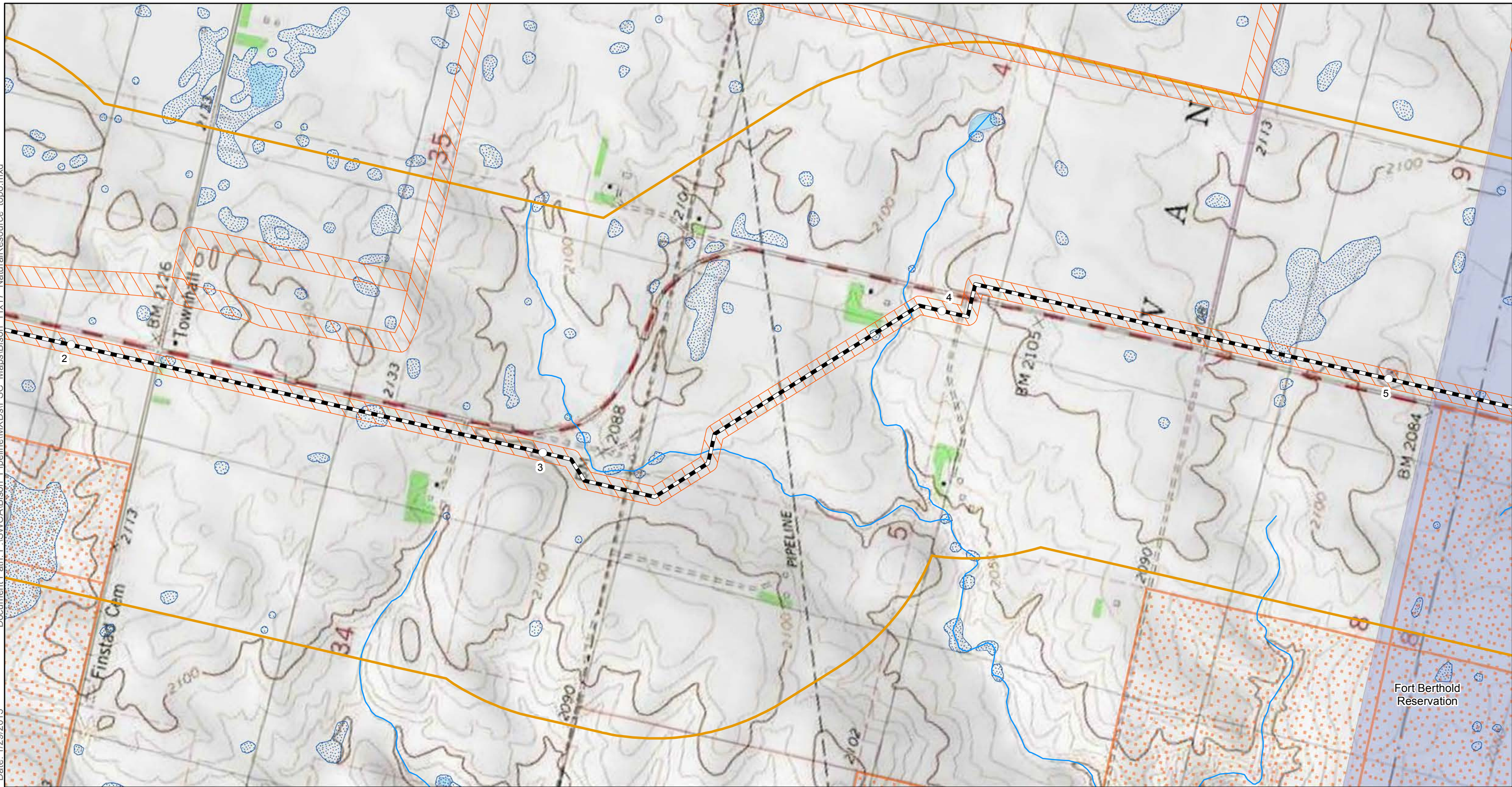
Map not to scale, for environmental review purposes only.



Plains Pipeline, L.P.
 Bison Pipeline
 Siting Criteria
 Natural Resource - Topo Map
 Page 1 of 4
 Mountrail County, North Dakota

Document Path: P:\SWCA\Bison Pipeline\MXDs\PSC_Maps\Bison_11x17_NaturalResource_topo.mxd
 Date: 1/29/2015

Author: MEntinger



Valve	NHD Waterbody	Native American Land
Milepost	NDGS Landslide Deposits	Private Conservation Land
Centerline	North Dakota Mineral Trust Lands	State Land
Survey Corridor	Criteria Data	PLOTS Land
Corridor (1 mile)	Federal Land	Abandoned Mine
NHD Waterway	Joint Ownership	
NWI Wetland	Local Land	

1:12,000

Map not to scale, for environmental review purposes only.

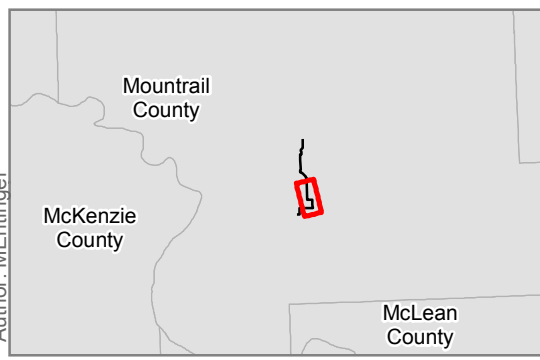
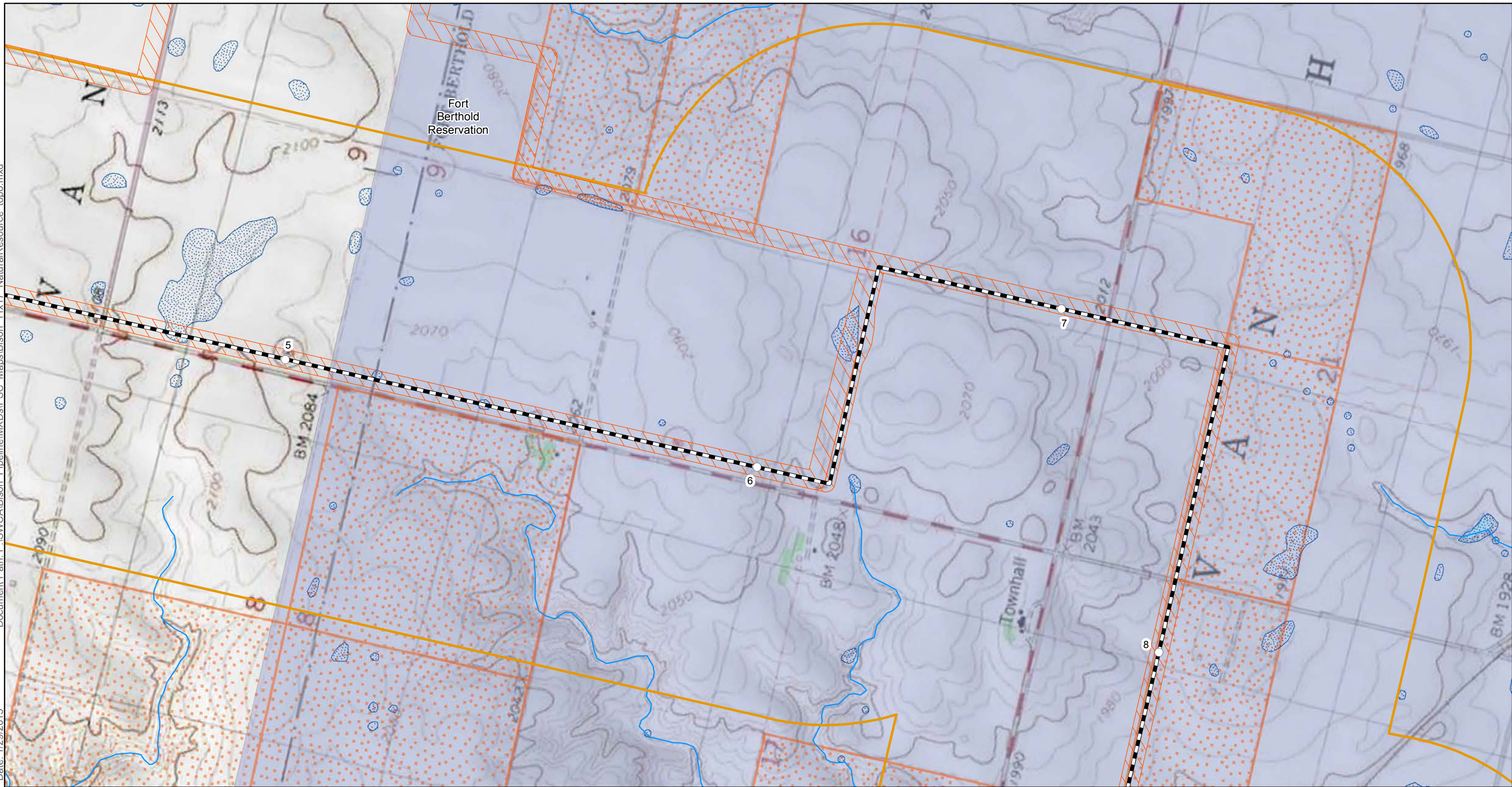


Plains Pipeline, L.P.
 Bison Pipeline
 Siting Criteria
 Natural Resource - Topo Map
 Page 2 of 4
 Mountrail County, North Dakota

Document Path: P:\SWCA\Bison_Pipeline\MXDs\PSC_Maps\Bison_11x17_NaturalResource_topo.mxd

Date: 1/29/2015

Author: MEntinger



Valve	NHD Waterbody	Native American Land
Milepost	NDGS Landslide Deposits	Private Conservation Land
Centerline	North Dakota Mineral Trust Lands	State Land
Survey Corridor	Criteria Data	PLOTS Land
Corridor (1 mile)	Federal Land	Abandoned Mine
NHD Waterway	Joint Ownership	
NWI Wetland	Local Land	

1:12,000

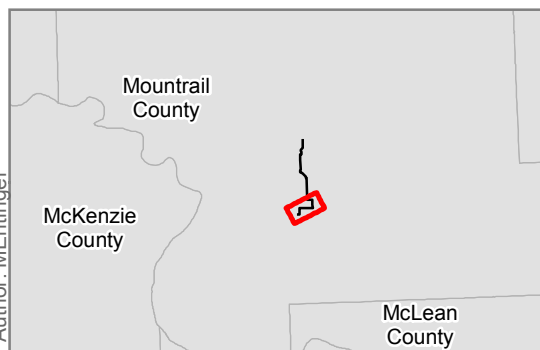
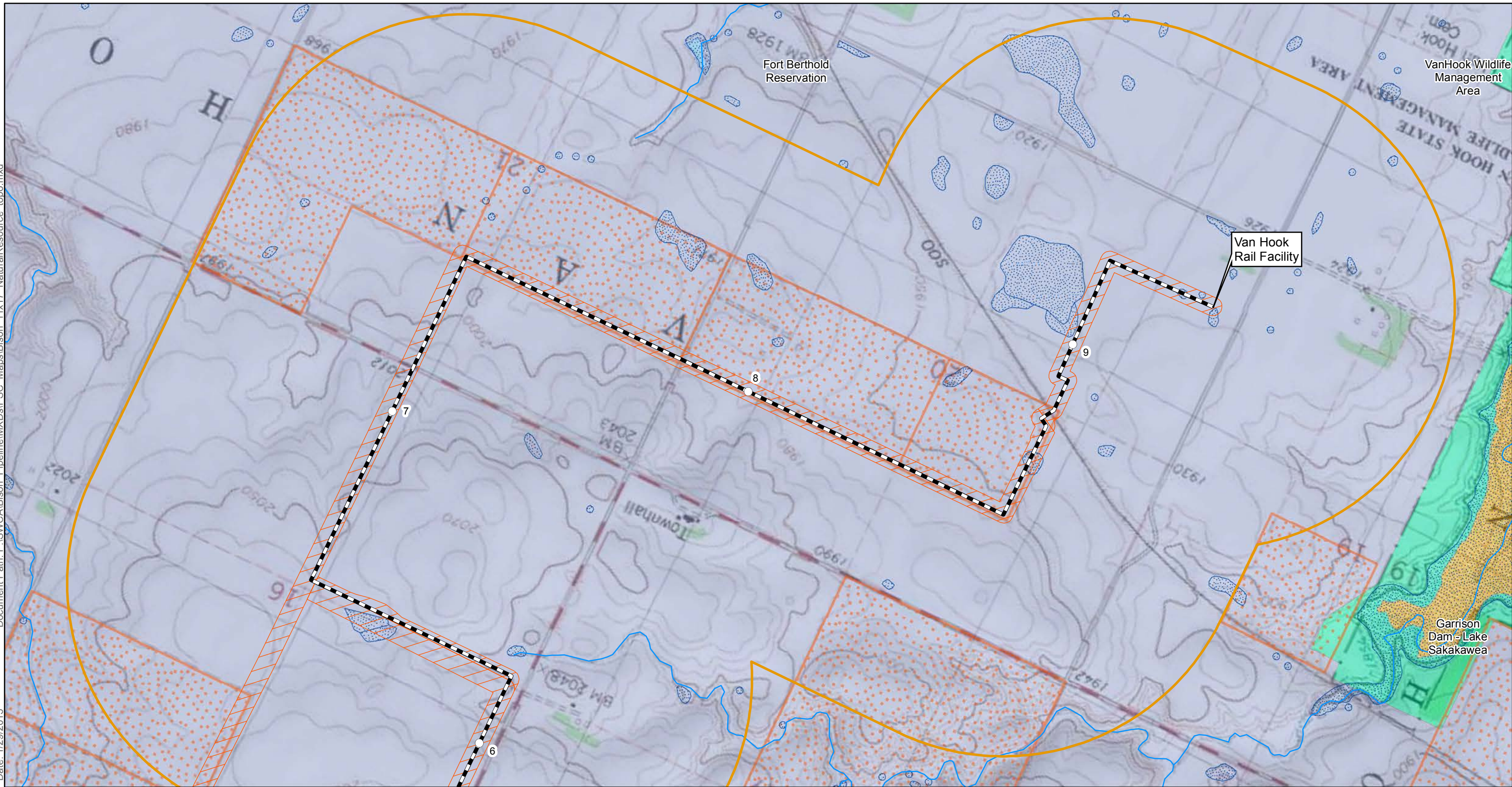
Map not to scale, for environmental review purposes only.



Plains Pipeline, L.P.
 Bison Pipeline
 Siting Criteria
 Natural Resource - Topo Map
 Page 3 of 4
 Mountrail County, North Dakota

Document Path: P:\SWCA\Bison_Pipeline\MXDs\PSC_Maps\Bison_11x17_NaturalResource_topo.mxd

Date: 1/29/2015



Valve	NHD Waterbody	Native American Land
Milepost	NDGS Landslide Deposits	Private Conservation Land
Centerline	North Dakota Mineral Trust Lands	State Land
Survey Corridor	Criteria Data	PLOTS Land
Corridor (1 mile)	Federal Land	Abandoned Mine
NHD Waterway	Joint Ownership	
NWI Wetland	Local Land	

1:12,000

 Map not to scale, for environmental review purposes only.

E3 ENVIRONMENTAL
Enhancing Execution with Experience

Plains Pipeline, L.P.
Bison Pipeline
 Siting Criteria
 Natural Resource - Topo Map
Page 4 of 4
 Mountrail County, North Dakota