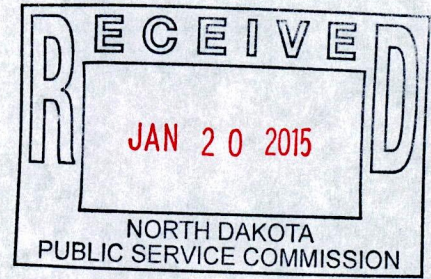


TARGA BADLANDS LLC



**TEN YEAR PLAN
NORTH DAKOTA**

January 20, 2015

1 **PU-15-39** Filed: 1/20/2015 Pages: 7
2015 ten year plan

Targa Badlands LLC

Targa Badlands LLC
Ten Year Plan North Dakota
January 20, 2015

Section A: Existing Energy Conversion Facilities

Part I - Little Missouri Gas Plant (LMGP I & II)

1. The plants are located in Township 149N, Range 98W, Section 30, south of Watford City.
2. The plants utilize refrigerated processing technology to process field gas high in natural gas liquids (NGLs). The process involves removal of moisture and acid gases, followed by fractionation of the raw NGLs into purity products that include propane, iso-butane, normal butane, and natural gasoline. These products are transported off site by truck for sale, but beginning in early 2015 will be transported off site by pipeline. The residue gas is added to the Northern Border Pipeline.

Plant Property Area: 40 acres

Plant Inlet Gas Rate: 50 million standard cubic feet per day (mmscfd)

Maximum Design Operating Pressure: 1000 psi

Residue Gas Production: 33 mmscfd

Compressor specifications, including type, horsepower, output pressure and capacity

- i. Type - Waukesha (6); Caterpillar (5)
- ii. Waukesha - 675 Hp (avg); Caterpillar - 460 Hp (avg.)
- iii. Output pressure - 1400 psia
- iv. Total compression horsepower - 6356

NGL Production: 8,000 standard barrels per day (SBPD)

Plant in-service date: July 2011

Section B: Energy Conversion Facilities Under Construction

1. A 40 million standard cubic feet per day expansion of the Little Missouri Gas Plant (LMGP III) is currently under construction. The plant is located in Township 149N, Range 98W, Section 29, south of Watford City.
2. The plant utilizes a cryogenic processing technology to process gas high in natural gas liquids (NGLs). The process involves removal of moisture and acid gases, followed by fractionation of the raw NGLs into purity products that include propane, iso-butane, normal butane, and natural gasoline. These products are transported off site by truck for sale, but beginning in early 2015 will be transported off site by pipeline. The residue gas is added to the Northern Border Pipeline.

Plant Property Area: 40 acres

Plant Inlet Gas Rate: 50 million standard cubic feet per day

Maximum Design Operating Pressure: 1000 psi

Residue Gas Production: 40 mmscfd

Compressor specifications, including type, horsepower, output pressure and capacity

- i. Type - Caterpillar (2)
- ii. Caterpillar - 1380 Hp (avg)
- iii. Output pressure - 1423 psia
- iv. Total compression horsepower - 2760

NGL Production: 8000 SBPD

Plant in-service date: Jan. 2015

Section C: Proposed Energy Conversion Facilities on Which Construction is Intended Within the Ensuing Five Years

Targa Badlands LLC is planning for a 200 million standard cubic feet per day addition of the Little Missouri Gas Plant (LMGP IV). The addition is proposed to be built on Section 29 of Township 149N, Range 98W, south of Watford City. The addition would increase the processing capacity from 73 million standard cubic feet per day to 273 million standard cubic feet per day. The plant, upon completion would possess the characteristics below:

Capacity: 273 million standard cubic feet per day

Plant Property Area: 40 acres (shared with plant under construction)

Plant Inlet Gas Rate: 303 million standard cubic feet per day

Maximum Design Operating Pressure: unknown at this time

Residue Gas Production: unknown at this time

Compressor specifications, including type, horsepower, output pressure and capacity

- i. Type - Undetermined at this time
- ii. Unknown
- iii. Output pressure - 1423 psia
- iv. Total compression horsepower - 9248

NGL Production: 35,000 SBPD

Plant in-service date: unknown at this time

Section D: Proposed Energy Conversion Facilities During The Next Ten-Year Time Period

Targa Badlands LLC is not planning to construct any new gas plants in the next ten years in North Dakota. However, should a business opportunity present itself, this could change.

Section E: Existing Transmission Facilities (Electric)

Targa Badlands LLC is not in the electricity transmission business.

Section F: Existing Transmission Facilities (Pipeline)

1. See the attached map of the New Town to Stanley pipeline.

2. The current pipeline system has the following characteristics:
 - a. Current Product type- crude oil
 - b. Length of facility in miles -- 31
 - c. Pipe size - 8.625 inches O.D.
 - d. Maximum design pressure – 1440 psig;
Current maximum operating pressure – 1000 psig
 - e. Maximum design flow rate-48,960 barrels per day (BDP); Current maximum flow rate (Propane) – 7,000 BPD
 - f. Pumping Station Specifications Including Type, Horsepower, Output Pressure, and Capacity:
 - i) Type- Redia (2) and National (2)
 - ii) Redia - 1000 Horsepower Electric Motor;
National - 200 Horsepower Electric Motor
 - iii) Current Discharge Pressure:
Redia: 1480 psig
National: 160 psig
 - iv) Capacity:
Redia: 1042 barrels per hour
National: 2500 barrels per hour
 - g. Minimum cover over pipe – 60 inches
 - h. New town ND Terminal: 30,000 barrels of storage capacity and Stanley ND Terminal: 25,000 barrels of storage capacity.

3. The pipeline system and associated pump stations and storage terminals were placed into service in 2013 and 2014.

4. Due to increasing production of crude oil in North Dakota Targa Badlands LLC has constructed a pipeline originating in New Town and terminating in Stanley. This pipeline will be utilized to transport crude oil gathered on the Van Hook peninsula and delivered to a transmission pipeline in Stanley for ultimate transport to refiners in the Midwest. The pipeline will remain in crude oil service beyond 2025. There are no facilities contemplated for retirement within the next ten years.

Section G: Proposed Transmissions Facilities on Which Construction is Intended Within the Ensuing Five Years (Electric)

This section does not apply to Targa Badlands LLC.

Section H: Proposed Transmission Facility in Which Construction is Intended Within the Ensuing Five Years (Pipeline)

Targa Badlands LLC is exploring the possibility of installing a transmission pipeline from Targa Badlands LLC's Antelope station located at Township 152, Range 95, and section 17 to a third party transmission pipeline within the vicinity. The plans are not finalized. Should a business opportunity or the need present itself, the addition of a new transmission pipeline could be added to Targa Badlands LLC's system.

Pipeline and pump station maintenance is anticipated, including the removal of check valves, the modification of pump station piping, and the addition of Drag Reducing Agent (DRA) injection skids to facilitate the flow of the pipeline for crude oil.

Section I: Proposed Transmission Facilities During the Next Ten-Year Time Period (Electrical and Pipeline)

The addition of a transmission pipeline from the Antelope station to a third party transmission pipeline is being evaluated within the next five years. Targa Badlands LLC is not planning to construct any additional transmission pipelines in the next ten years in North Dakota. However, should a business opportunity present itself, this could change.

Section J: Regional Coordination

At this time, Targa Badlands LLC does not expect to require any additional utilities within the state of North Dakota as part of the pipeline construction project. However, should the situation change and additional utilities requirements be necessary, it is Targa Badlands LLC policy to coordinate and communicate our needs to other utilities at the onset.

Section K: Environmental Information

Environmental information gathered and prepared to obtain the existing route permit is available.

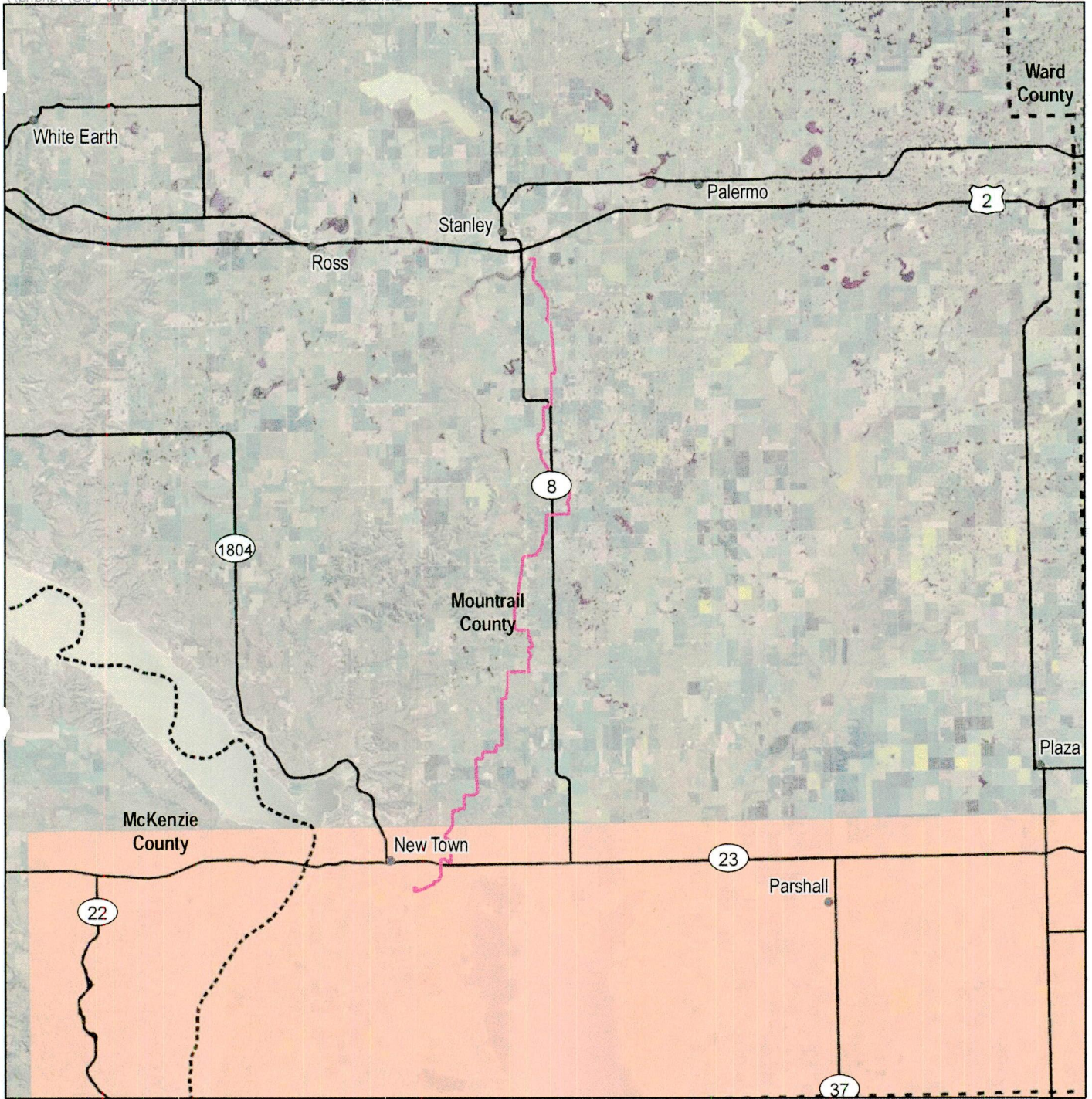
Section L: Delivery Volumes

At the Stanley terminal, the pipeline delivers crude oil to a transmission pipeline. The following volumes have been delivered since the commissioning of the pipeline in November 2013:

December 2013	66 MBBL ¹
January 2014	169 "
February 2014	140 "
March 2014	153 "
April 2014	197 "
May 2014	254 "

Monthly volumes of crude oil are anticipated to increase each year as new production wells are completed and connected to the gathering pipelines which deliver crude oil to the New Town to Stanley pipeline.

¹ (MBBL = thousand barrels)



Source: ESRI 2009, NAIP 2012

-  New Town to Stanley Pipeline
-  Cities
-  Highways
-  Counties
-  Fort Berthold Reservation

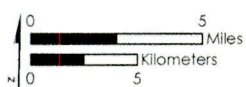


Figure 1
New Town to Stanley Pipeline

North Dakota, United States

April 2014

