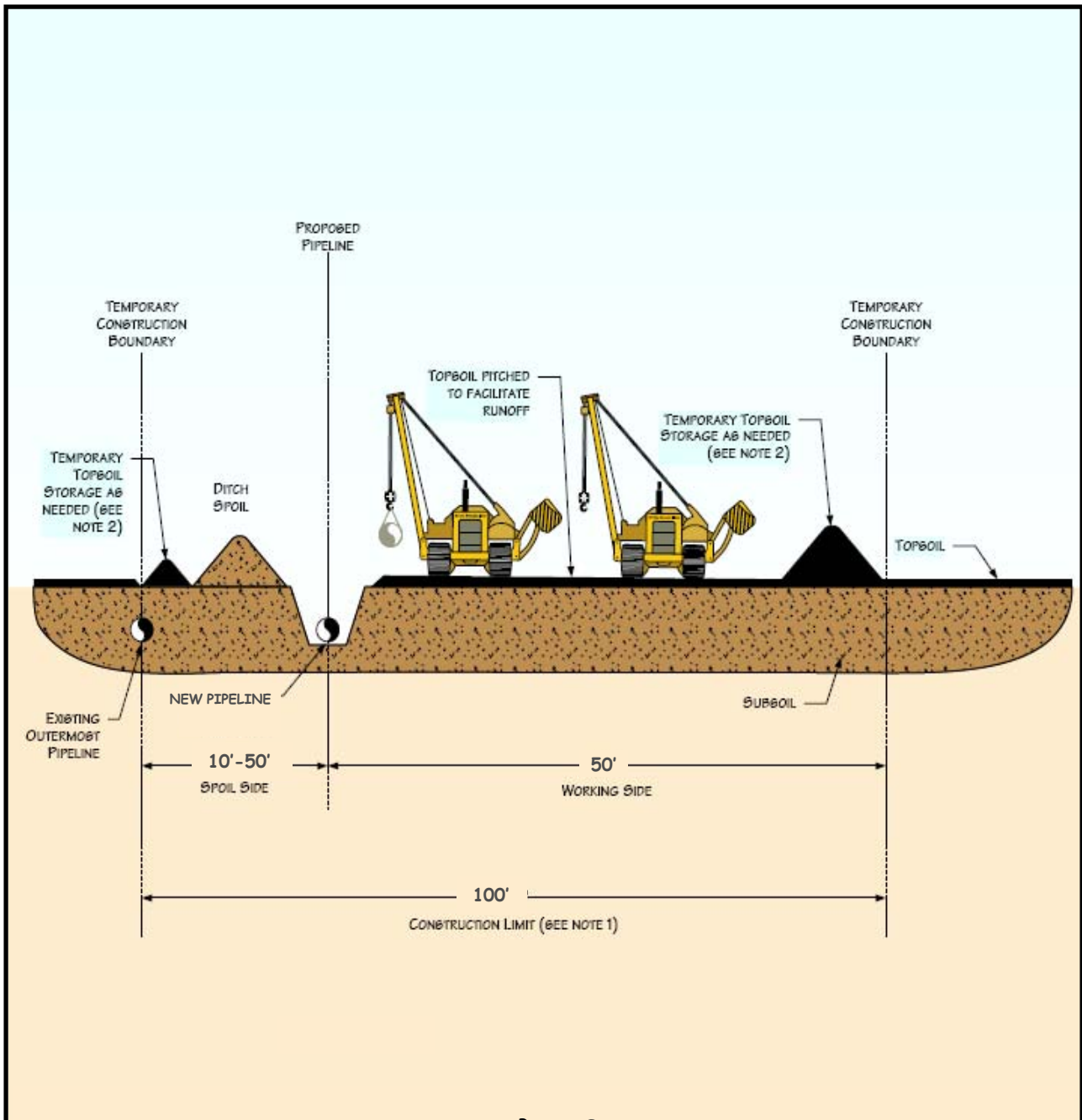


TAB 6 – Environmental Mitigation Plan Exhibits

- Figure 6.1.1 Typical Construction Layout
- Figure 6.1.2 Typical Topsoil Segregation – Ditch Plus Spoil Side
- Figure 6.1.3 Typical Topsoil Segregation – Full Right-of-Way
- Figure 6.1.4 Typical Topsoil Segregation – Trench Line Only
- Figure 6.1.5 Typical Temporary or Permanent Berms – Perspective View
- Figure 6.1.6 Typical Temporary or Permanent Berms – Elevation View
- Figure 6.1.7 Typical Silt Fence Installation
- Figure 6.1.8 Typical Straw Bale installation
- Figure 6.1.9 Typical Trench Breakers – Perspective View
- Figure 6.1.10 Typical Trench Breakers – Plan and Profile Views
- Figure 6.2.1 Typical Waterbody Crossing – Wet Trench Method
- Figure 6.2.2 Typical Waterbody Crossing – Dam and Pump Method
- Figure 6.2.3 Typical Waterbody Crossing – Flume Method
- Figure 6.2.4 Typical Waterbody Crossing – Directional Drill Method
- Figure 6.2.5 Typical Span Type Bridge
- Figure 6.2.6 Typical Rock and Flume Bridge
- Figure 6.2.7 Typical Dewatering Measures
- Figure 6.2.8 Typical Straw Bale Dewatering Structure
- Figure 6.3.1 Typical Wetland Crossing
- Figure 6.4.1 Typical Paved Road Crossing – Sediment Control
- Figure 6.7.1 Permanent Slope Breakers – Perspective View
- Figure 6.7.2 Erosion Control Blanket - Steep Slopes ($\geq 30\%$)
- Figure 6.7.3 Typical Final Stream Bank Stabilization – Rip Rap & Erosion Control



PROFILE

NOTES

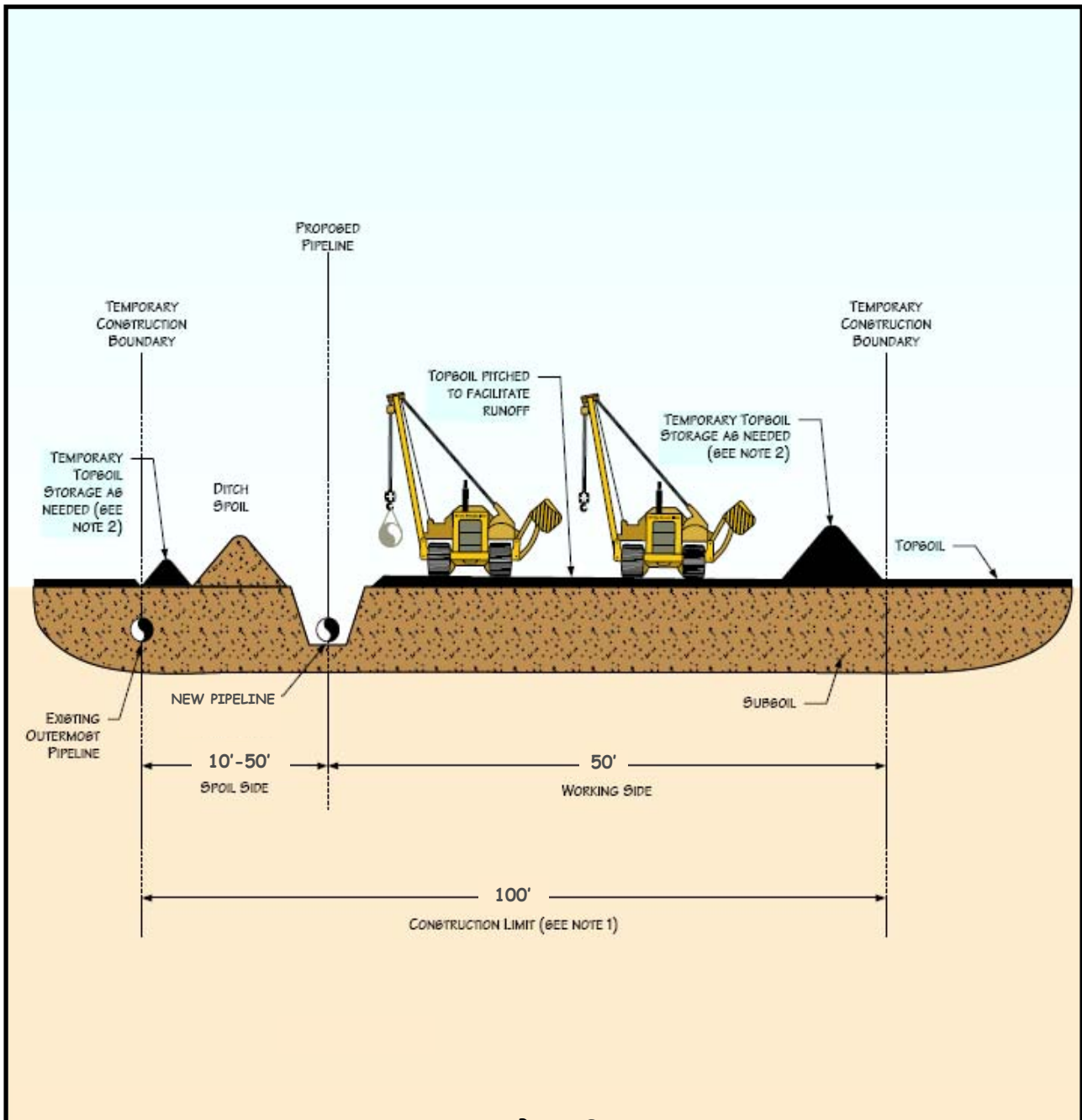
1. CONSTRUCTION LIMITS WILL TYPICALLY BE 100' WIDE. SPOIL SIDE WILL BE APPROXIMATELY 10-50' WIDE.
2. THIS DRAWING REFLECTS "DITCH PLUS SPOIL" TOPSOIL STRIPPING PROCEDURE. STOCKPILE TOPSOIL SEPARATELY FROM DITCH SOIL SHOWN OR IN OTHER CONFIGURATION APPROVED BY COMPANY.
3. THE OFFSET FROM OUTERMOST EXISTING PIPELINE WILL BE 10-50' FOR MOST LOCATIONS BUT MAY BE INCREASED OR DECREASED DEPENDING ON THE SITE SPECIFIC CONSTRUCTION REQUIREMENTS.



Bridger Pipeline LLC
 455 North Poplar Street
 Casper, Wyoming 82602

Figure 6.1.1 – Typical Construction Layout

Heart River Pipeline
 Billings and Stark Counties



PROFILE

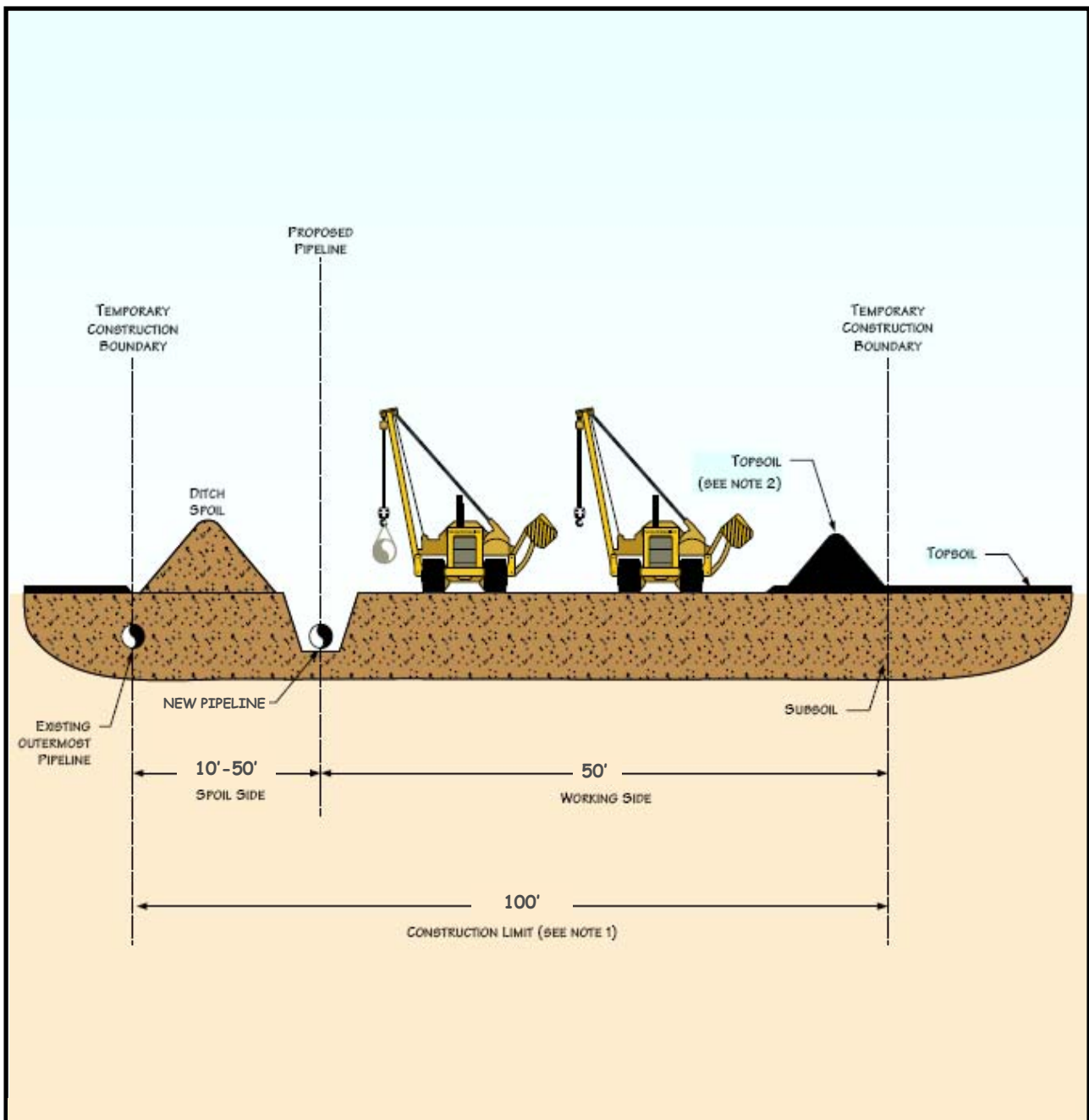
NOTES

1. CONSTRUCTION LIMITS WILL TYPICALLY BE 100' WIDE. SPOIL SIDE WILL BE APPROXIMATELY 10-50' WIDE.
2. THIS DRAWING REFLECTS "DITCH PLUS SPOIL" TOPSOIL STRIPPING PROCEDURE. STOCKPILE TOPSOIL SEPARATELY FROM DITCH SOIL SHOWN OR IN OTHER CONFIGURATION APPROVED BY COMPANY.
3. THE OFFSET FROM OUTERMOST EXISTING PIPELINE WILL BE 10-50' FOR MOST LOCATIONS BUT MAY BE INCREASED OR DECREASED DEPENDING ON THE SITE SPECIFIC CONSTRUCTION REQUIREMENTS.



**Figure 6.1.2 – Typical Topsoil Segregation
Ditch Plus Spoil Side**

Heart River Pipeline
Billings and Stark Counties



PROFILE

NOTES

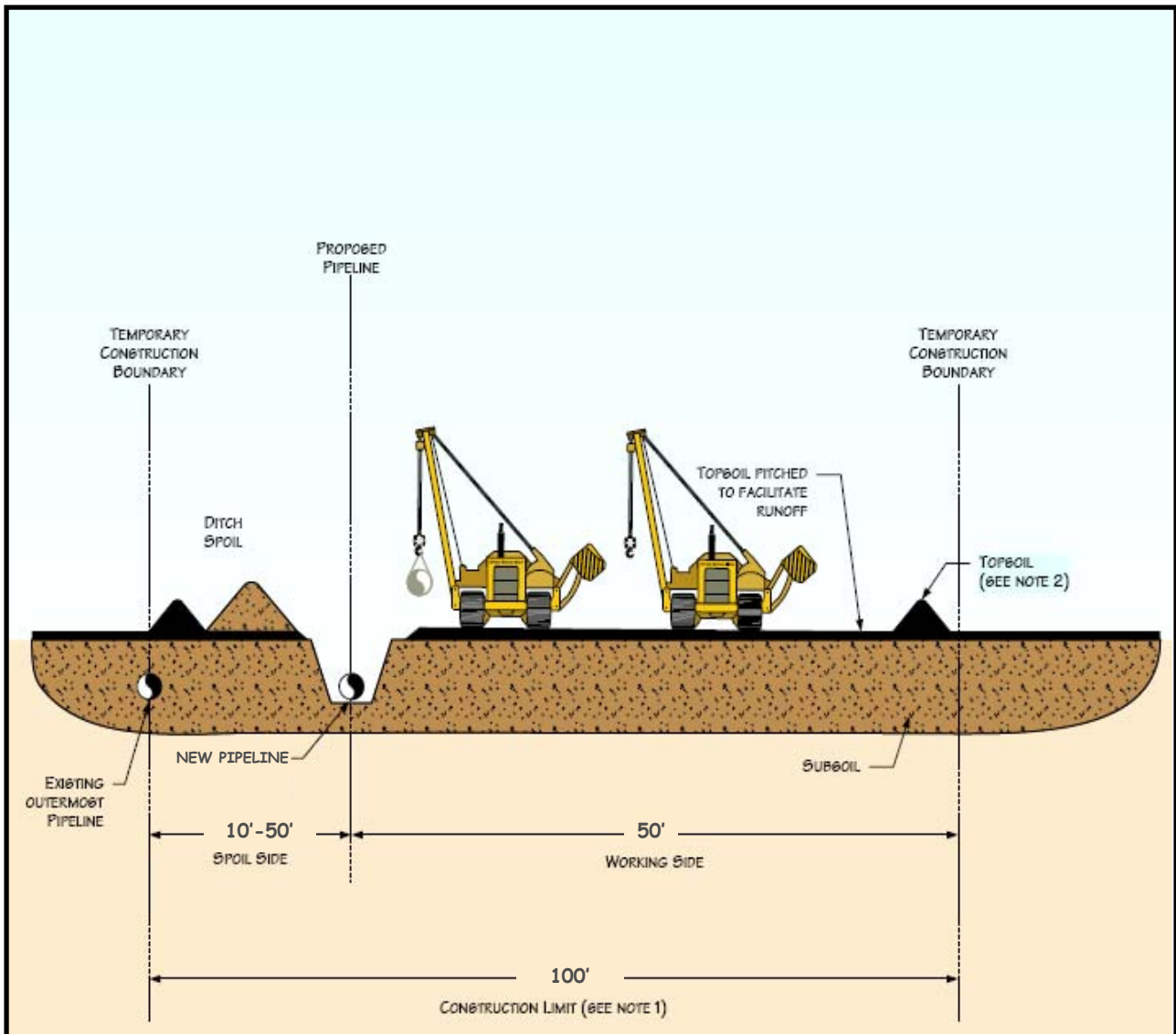
1. CONSTRUCTION LIMITS WILL TYPICALLY BE 100' WIDE. SPOIL SIDE WILL BE APPROXIMATELY 10-50' WIDE.
2. THIS DRAWING REFLECTS "FULL RIGHT OF WAY" TOPSOIL STRIPPING PROCEDURE. STOCKPILE TOPSOIL SEPARATELY FROM DITCH SOIL SHOWN OR IN OTHER CONFIGURATION APPROVED BY COMPANY.
3. THE OFFSET FROM OUTERMOST EXISTING PIPELINE WILL BE 10-50' FOR MOST LOCATIONS BUT MAY BE INCREASED OR DECREASED DEPENDING ON THE SITE SPECIFIC CONSTRUCTION REQUIREMENTS.



Bridger Pipeline LLC
 455 North Poplar Street
 Casper, Wyoming 82602

Figure 6.1.3 – Typical Topsoil Segregation Full Right-of-Way

Heart River Pipeline
 Billings and Stark Counties



PROFILE

NOTES

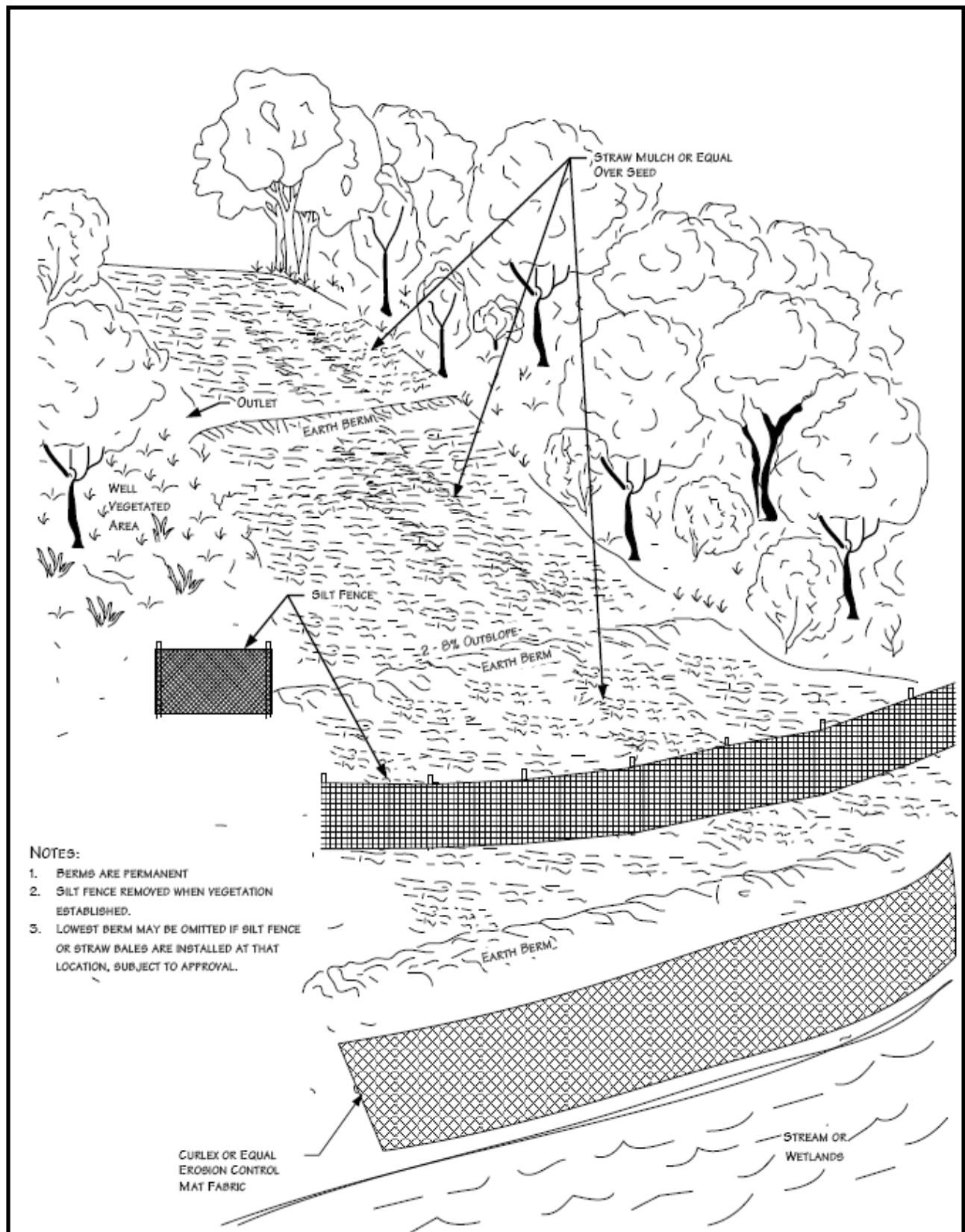
1. CONSTRUCTION LIMITS WILL TYPICALLY BE 100' WIDE. SPOIL SIDE WILL BE APPROXIMATELY 10-50' WIDE.
2. THIS DRAWING REFLECTS "TRENCH LINE ONLY" TOPSOIL STRIPPING PROCEDURE. STOCKPILE TOPSOIL SEPARATELY FROM DITCH SOIL SHOWN OR IN OTHER CONFIGURATION APPROVED BY COMPANY.
3. THE OFFSET FROM OUTERMOST EXISTING PIPELINE WILL BE 10-50' FOR MOST LOCATIONS BUT MAY BE INCREASED OR DECREASED DEPENDING ON THE SITE SPECIFIC CONSTRUCTION REQUIREMENTS.



Bridger Pipeline LLC
 455 North Poplar Street
 Casper, Wyoming 82602

Figure 6.1.4 – Typical Topsoil Segregation Trench Line Only

Heart River Pipeline
 Billings and Stark Counties



NOTES:

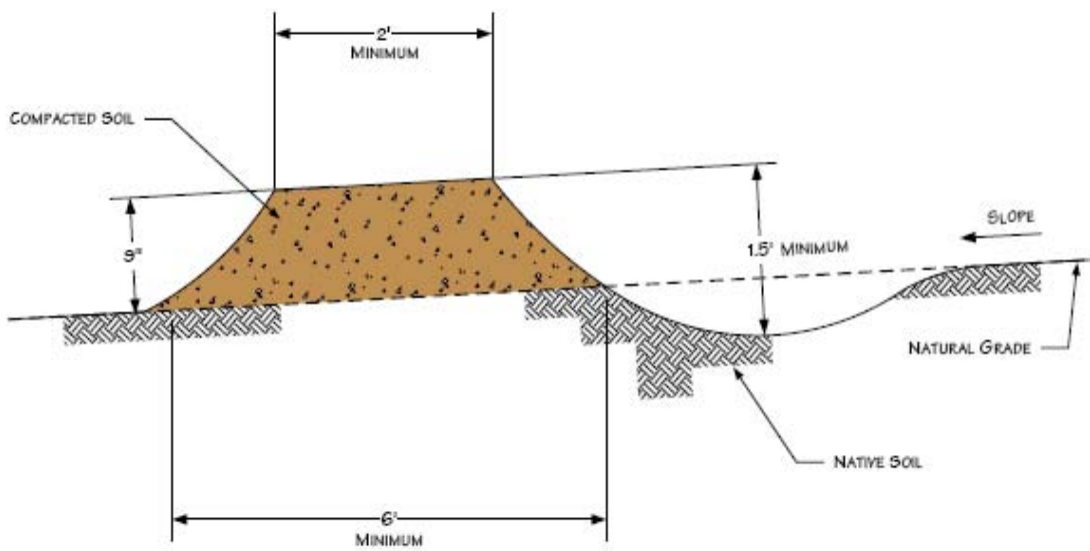
1. BERMS ARE PERMANENT
2. SILT FENCE REMOVED WHEN VEGETATION ESTABLISHED.
3. LOWEST BERM MAY BE OMITTED IF SILT FENCE OR STRAW BALES ARE INSTALLED AT THAT LOCATION, SUBJECT TO APPROVAL.



Bridger Pipeline LLC
 455 North Poplar Street
 Casper, Wyoming 82602

Figure 6.1.5 – Typical Temporary or Permanent Berms-Perspective View

Heart River Pipeline
 Billings and Stark Counties



NOTES

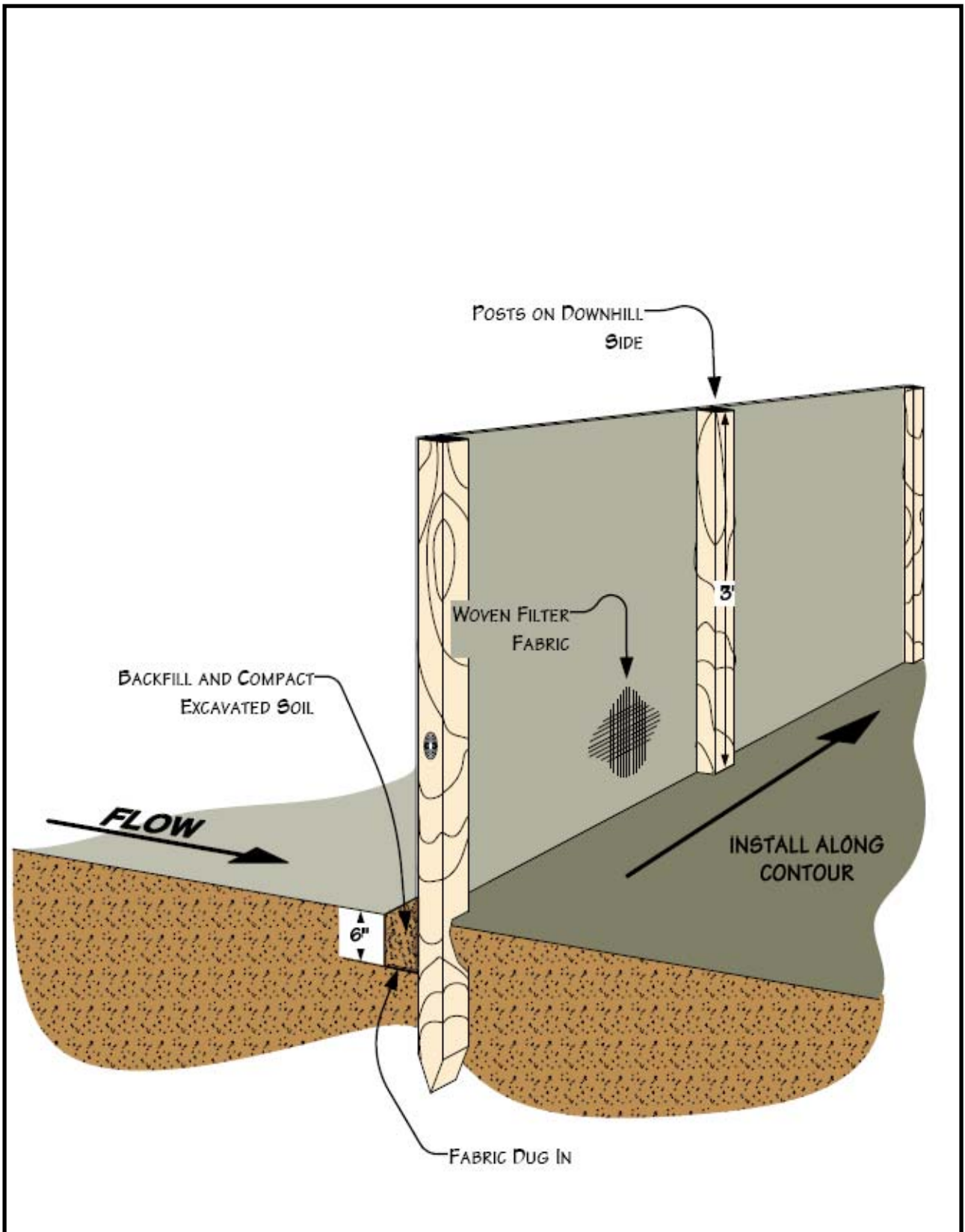
1. BERMS SHALL BE CONSTRUCTED WITH 2 TO 3 PERCENT OUTSLOPE.
2. BERMS SHALL BE OUTLETED TO WELL VEGETATED STABLE AREAS, SILT FENCES, STRAW/HAY BALES OR ROCK APRONS.
3. BERMS SHALL BE SPACED AS DESCRIBED IN CONSTRUCTION SPECIFICATIONS.
4. ADDITIONAL INFORMATION INCLUDED ON OTHER DRAWINGS.



Bridger Pipeline LLC
 455 North Poplar Street
 Casper, Wyoming 82602

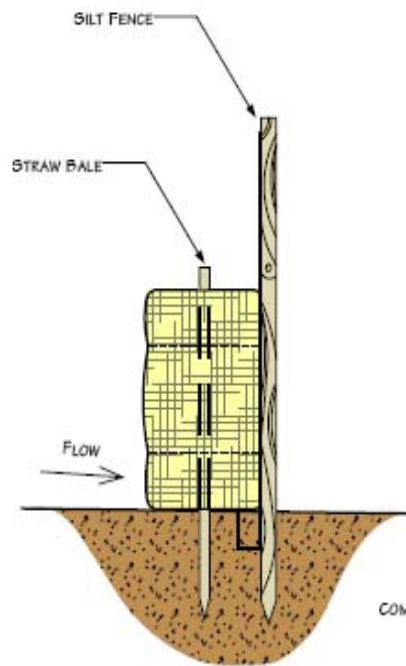
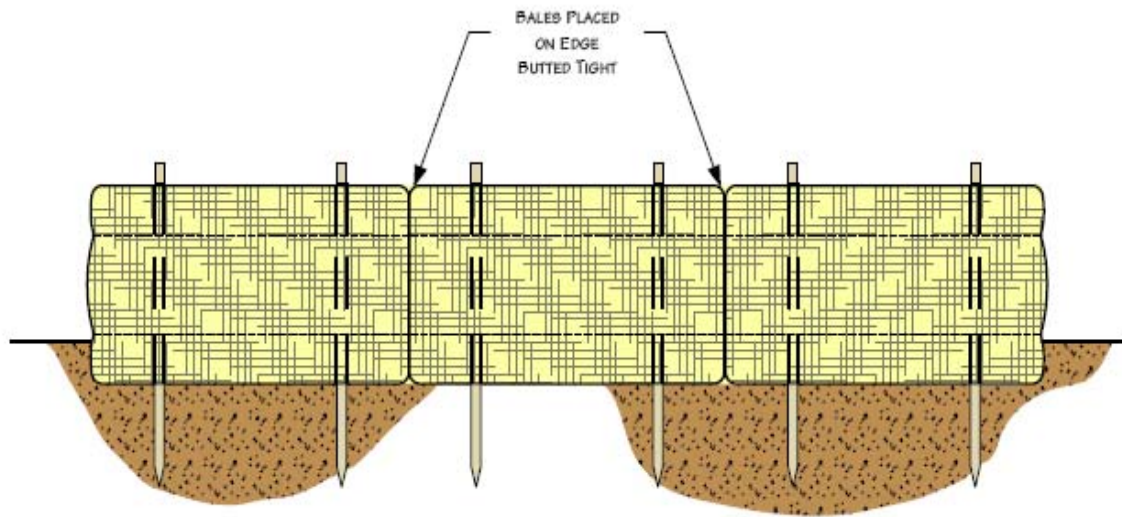
Figure 6.1.6 – Typical Temporary or Permanent Berm-Elevation View

Heart River Pipeline
 Billings and Stark Counties

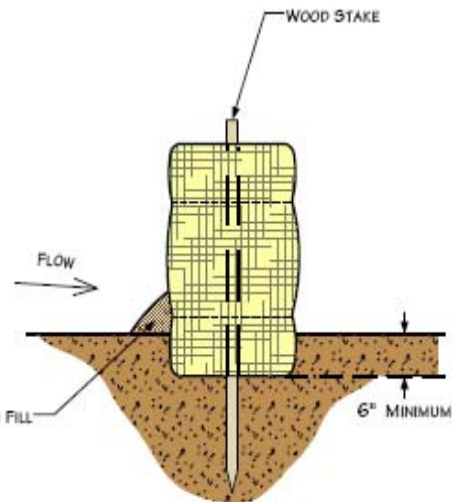


BRIDGER
 Bridger Pipeline LLC
 455 North Poplar Street
 Casper, Wyoming 82602

Figure 6.1.7 – Typical Silt Fence Installation
 Heart River Pipeline
 Billings and Stark Counties



STRAW/HAY BALES & SILT FENCE



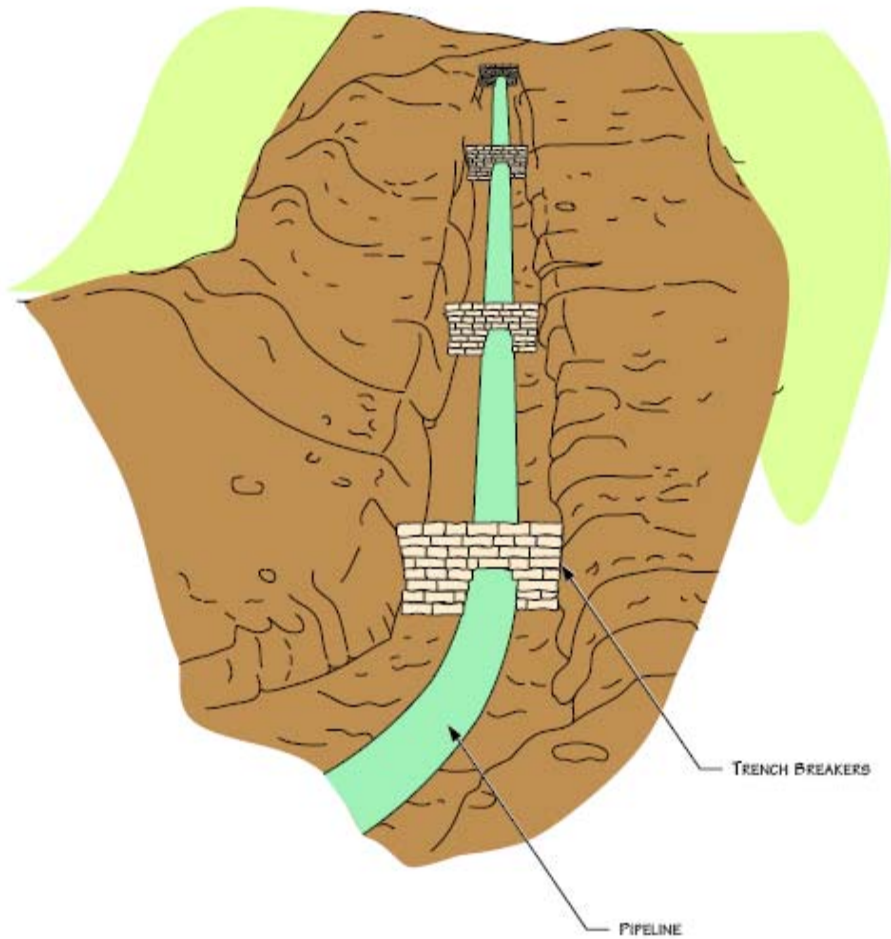
STRAW/HAY BALES ONLY



Bridger Pipeline LLC
455 North Poplar Street
Casper, Wyoming 82602

Figure 6.1.8 –Straw Bale Installation

Heart River Pipeline
Billings and Stark Counties



NOTES

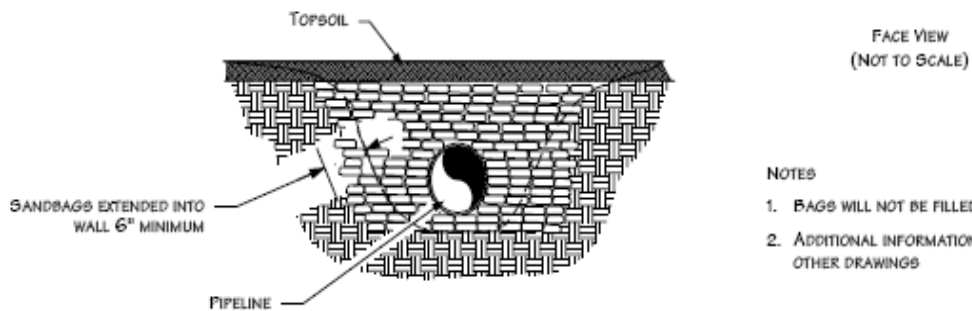
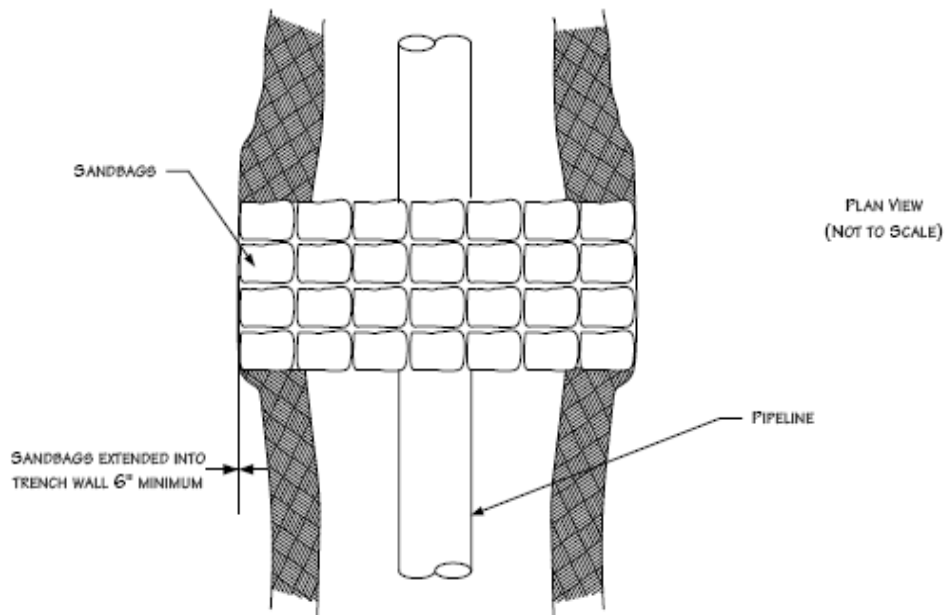
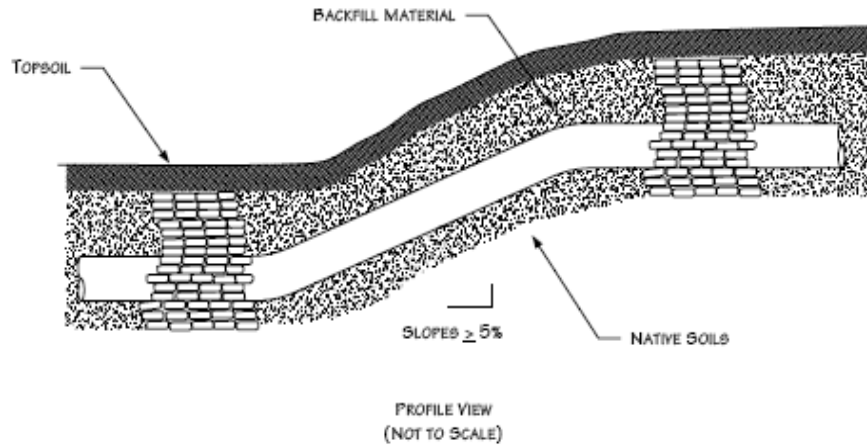
1. BAGS WILL NOT BE FILLED WITH TOPSOIL.
2. ADDITIONAL INFORMATION INCLUDED ON OTHER DRAWINGS.



Bridger Pipeline LLC
455 North Poplar Street
Casper, Wyoming 82602

**Figure 6.1.9 Typical Trench Breaker
(Perspective View)**

Heart River Pipeline
Billings and Stark Counties



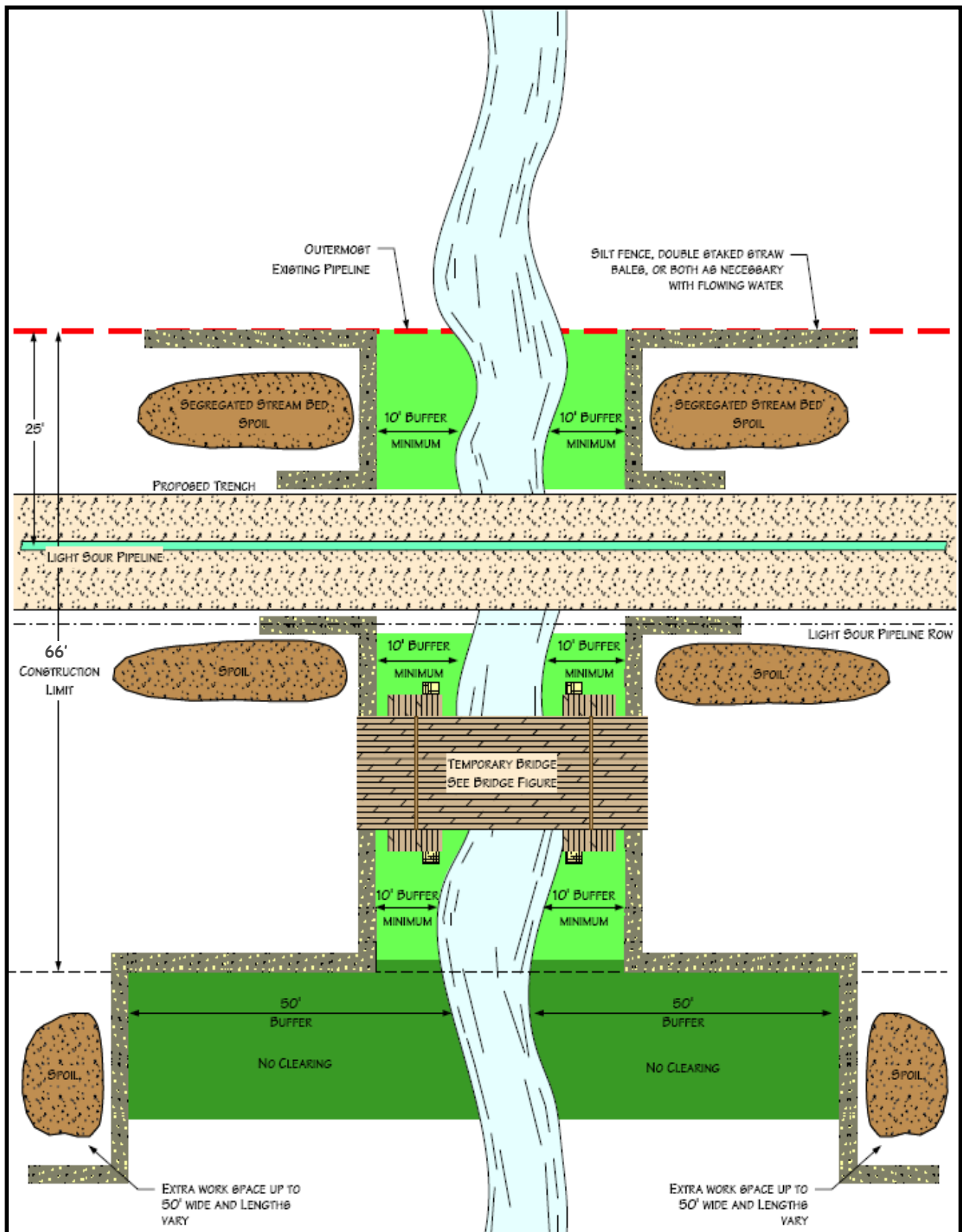
- NOTES
1. BAGS WILL NOT BE FILLED WITH TOPSOIL
 2. ADDITIONAL INFORMATION INCLUDED ON OTHER DRAWINGS



Bridger Pipeline LLC
455 North Poplar Street
Casper, Wyoming 82602

**Figure 6.1.10 – Typical Trench Breaker
Plan and Profile View**

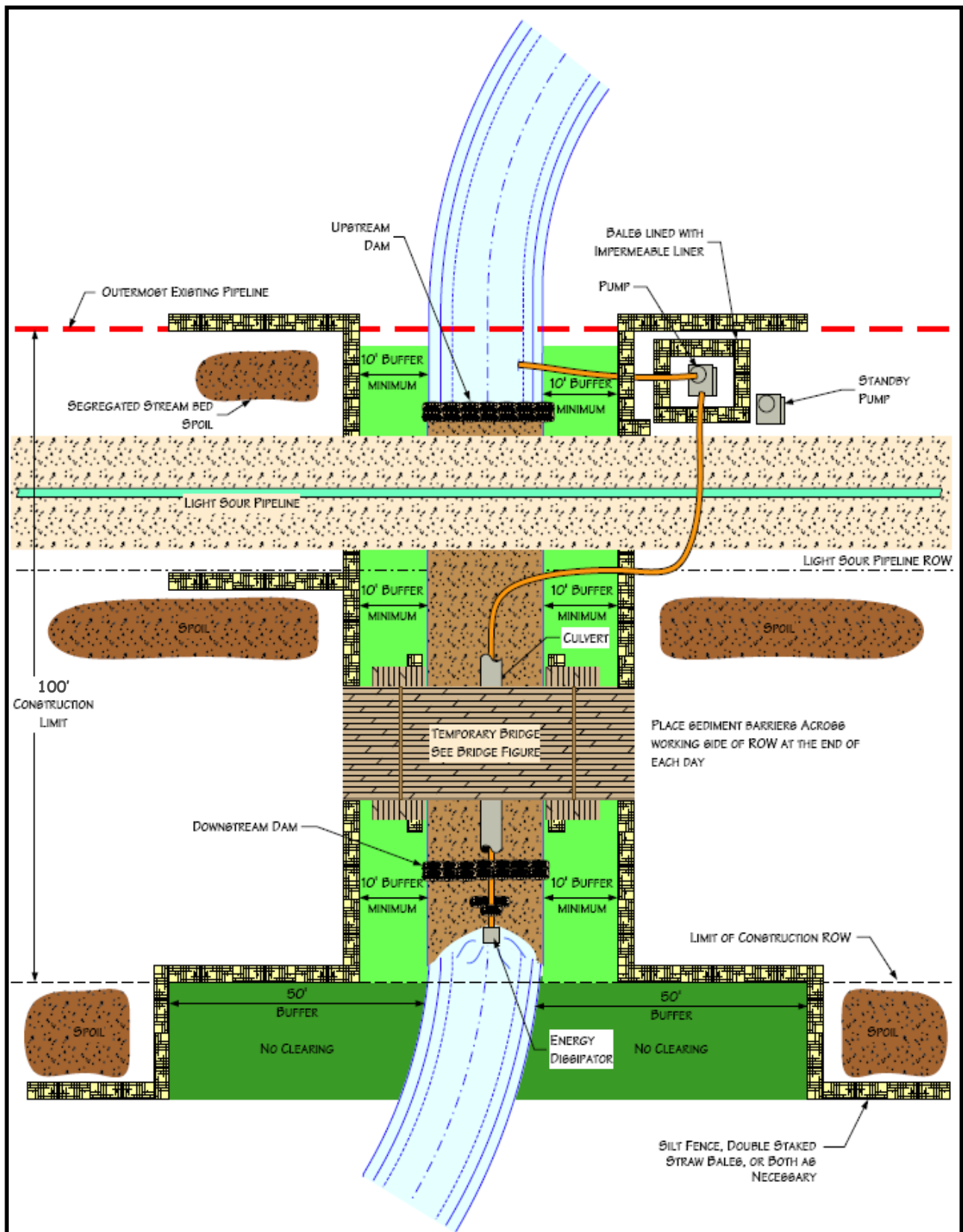
Heart River Pipeline
Billings and Stark Counties



Bridger Pipeline LLC
 455 North Poplar Street
 Casper, Wyoming 82602

**Figure 6.2.1 – Typical Waterbody Crossing
 Wet Trench Method**

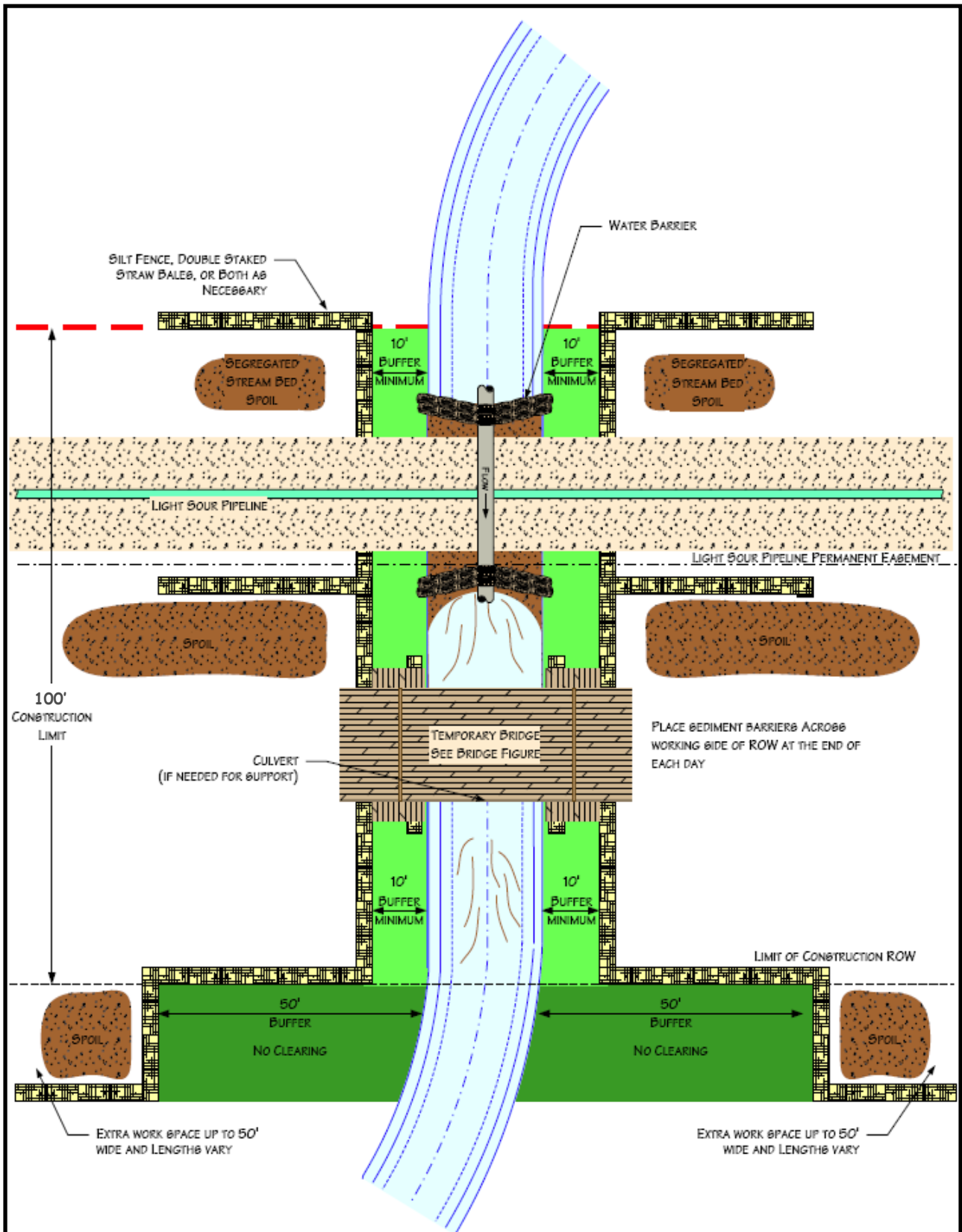
Heart River Pipeline
 Billings and Stark Counties



Bridger Pipeline LLC
 455 North Poplar Street
 Casper, Wyoming 82602

Figure 6.2.2 Typical Waterbody Crossing Dam and Pump Method

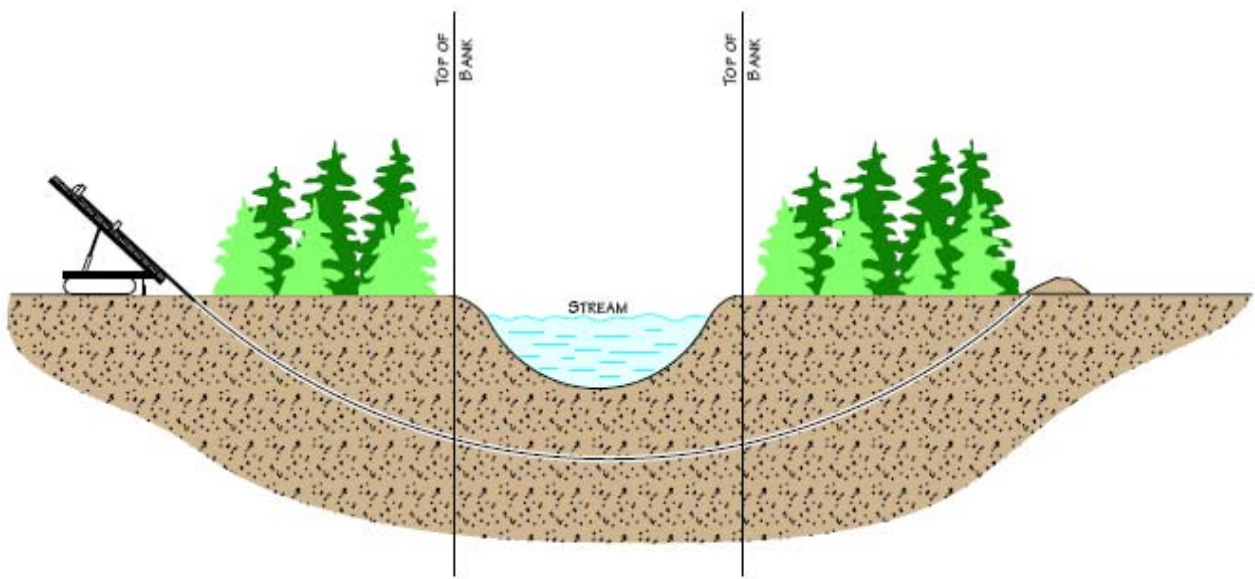
Heart River Pipeline
 Billings and Stark Counties



Bridger Pipeline LLC
 455 North Poplar Street
 Casper, Wyoming 82602

Figure 6.2.3 – Typical Waterbody Crossing Flume Method

Heart River Pipeline
 Billings and Stark Counties

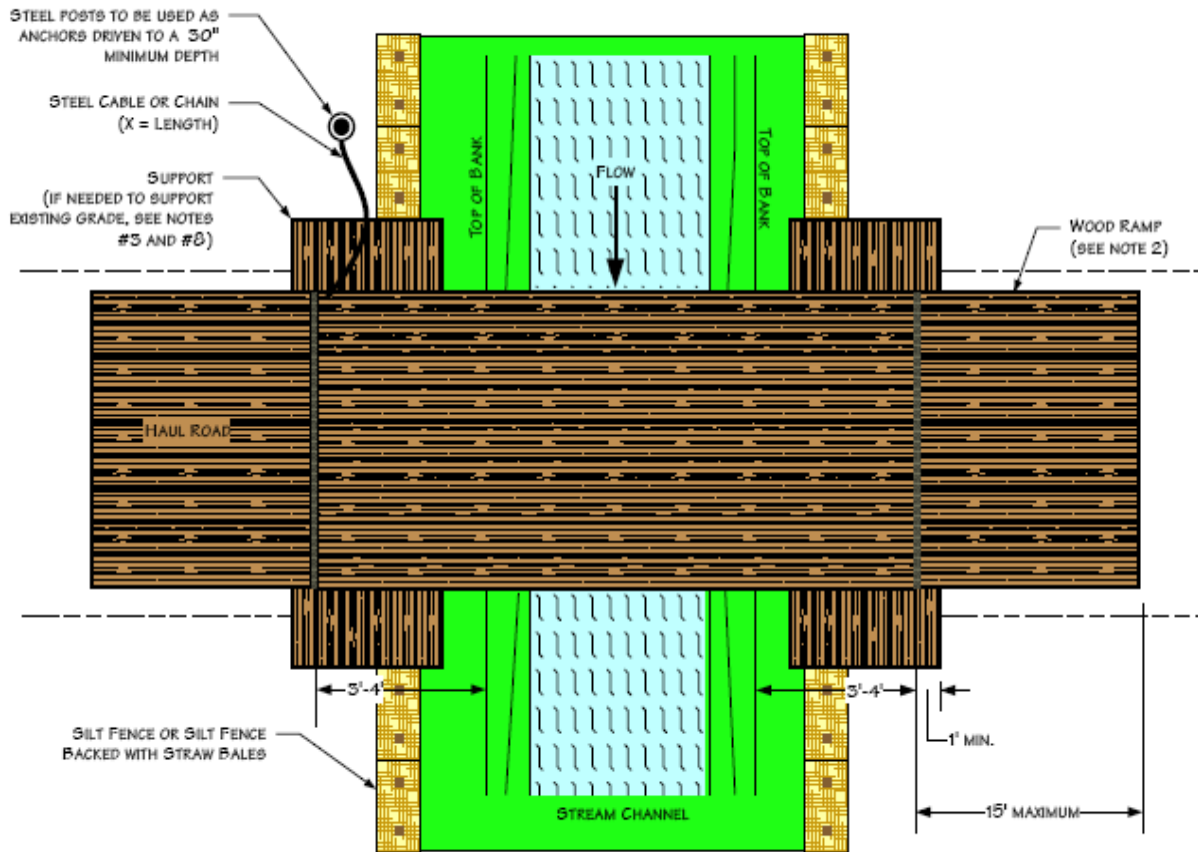


Bridger Pipeline LLC
 455 North Poplar Street
 Casper, Wyoming 82602

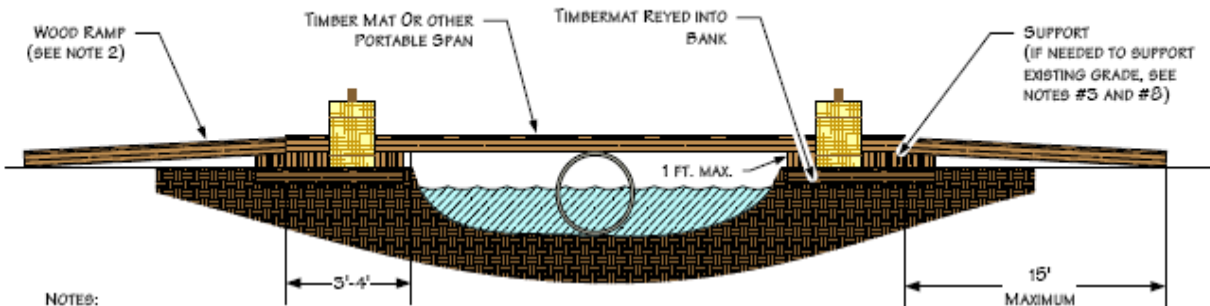
**Figure 6.2.4 –Typical Waterbody Crossing
 Directional Drill Method**

Heart River Pipeline
 Billings and Stark Counties

Plan View



Profile View



NOTES:

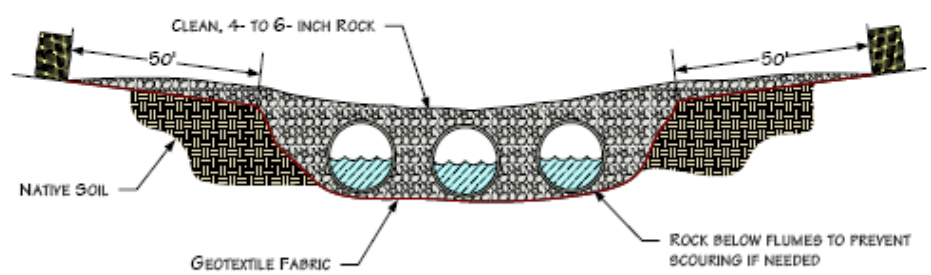
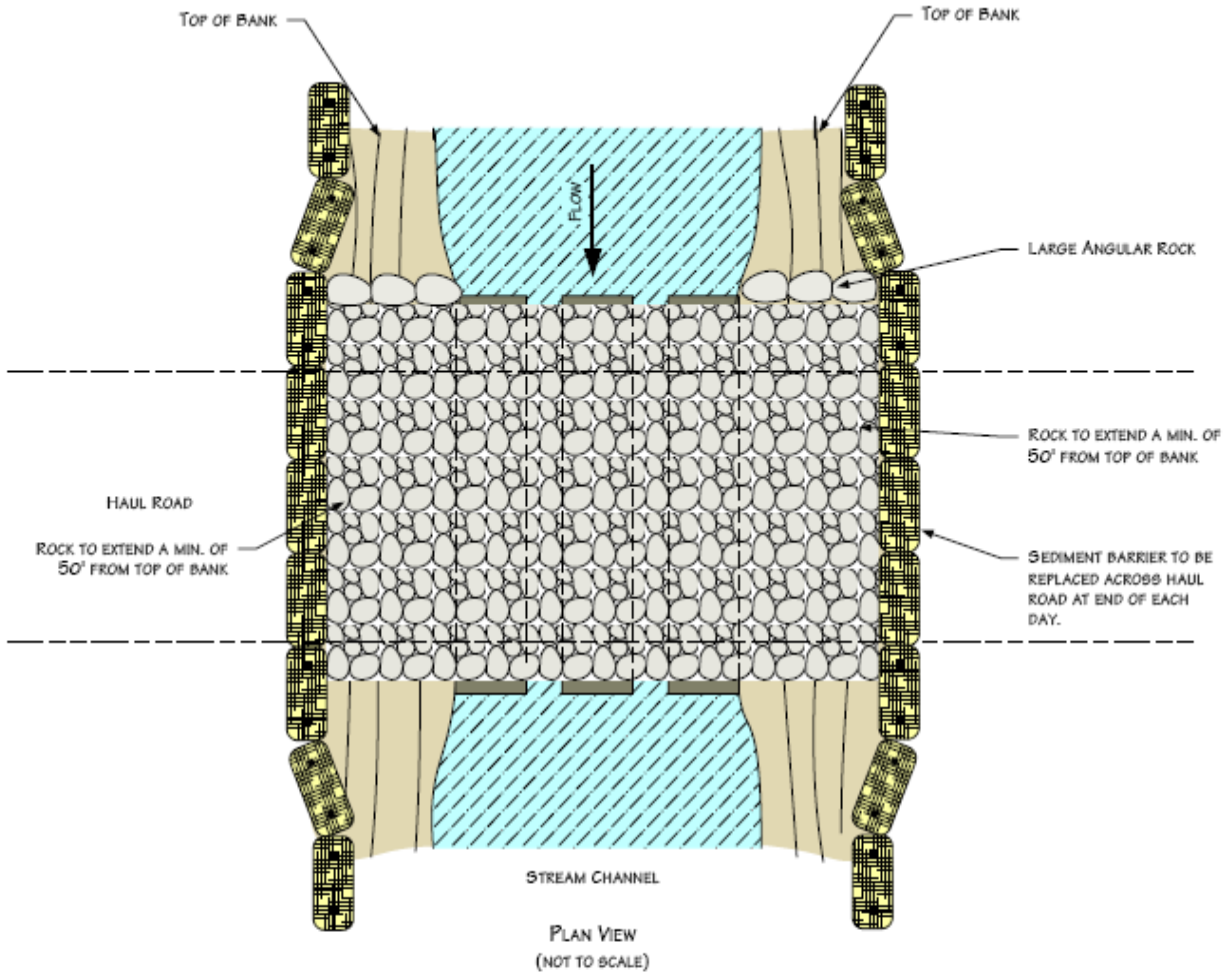
1. INSPECT BRIDGE OPENING PERIODICALLY AND FOLLOWING RAINFALLS OF OVER 1/2". REMOVE ANY DEBRIS RESTRICTING FLOW AND DEPOSIT IT AT AN UPLAND SITE OUTSIDE OF FLOODPLAIN.
2. IF PHYSICAL CIRCUMSTANCES PROHIBIT WOOD OR METAL RAMPS, EARTHEN RAMPS MAY BE USED AS APPROVED.
3. INSPECT BRIDGE ELEVATION SO BRIDGE REMAINS SUPPORTED ABOVE HIGH BANK AND DOES NOT SINK INTO BANK.
4. THE CULVERT SUPPORT MUST BE ANCHORED TO THE STREAM BOTTOM AND MAY NOT BE SUPPORTED WITH FILL.
5. EARTHEN RAMP CANNOT BE TALLER THAN 1' AND CANNOT EXTEND FOR MORE THAN 15' ON EITHER SIDE OF THE CROSSING.
6. THE BRIDGE MUST SPAN FROM TOP OF BANK TO TOP OF BANK.
7. THE BRIDGE MUST BE FIRMLY ANCHORED TO PREVENT IT FROM BEING TRANSPORTED DOWNSTREAM DURING HIGH FLOW.
8. ADDITIONAL SUPPORT MUST BE ADDED ON TOP OF BANK AND UNDER SPAN IF INITIAL SUPPORT STARTS TO SETTLE.
9. EROSION AND SEDIMENTATION CONTROL MEASURES SHALL BE INSPECTED AND MAINTAINED IN ACCORDANCE WITH THE COMPANY'S ENVIRONMENTAL MITIGATION PLAN



Bridger Pipeline LLC
455 North Poplar Street
Casper, Wyoming 82602

Figure 6.2.5 – Typical Span Type Bridge With or Without Instream Support

Heart River Pipeline
Billings and Stark Counties



NOTES:

1. STEEL FLUME PIPE(S) SIZED TO ALLOW FOR STREAM FLOW AND EQUIPMENT LOAD.
2. STRAW BALES SHALL BE PLACED ACROSS BRIDGE ENTRANCE EVERY NIGHT.
3. ADDITIONAL INFORMATION INCLUDED ON OTHER DRAWINGS.



Bridger Pipeline LLC
 455 North Poplar Street
 Casper, Wyoming 82602

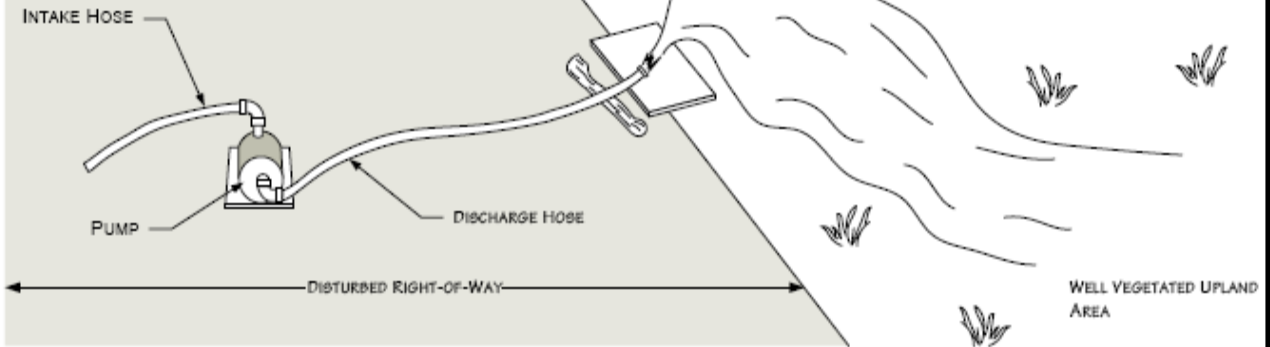
Figure 6.2.6 –Typical Rock Flume Bridge

Heart River Pipeline
 Billings and Stark Counties

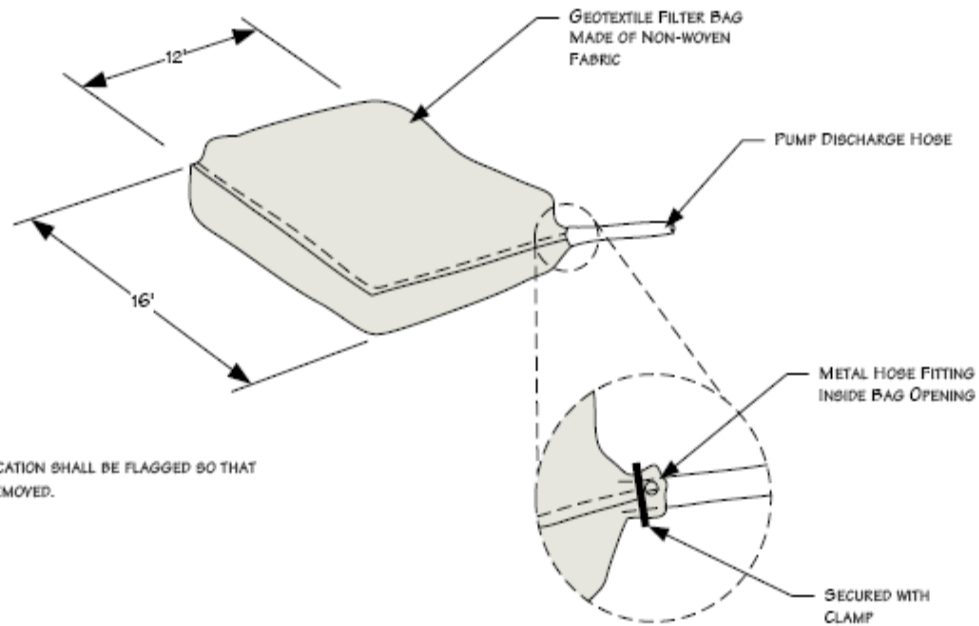
DEWATERING DISCHARGE IN WELL VEGETATED UPLANDS

NOTES:

1. PUMP INTAKE HOSE MUST BE SECURED AT LEAST ONE FOOT ABOVE THE TRENCH BOTTOM.
2. IF VEGETATION IS SPARSE, DEWATER INTO GEOTEXTILE FILTER BAG OR STRAW BALE DEWATERING STRUCTURE.



GEOTEXTILE FILTER BAG



NOTE:

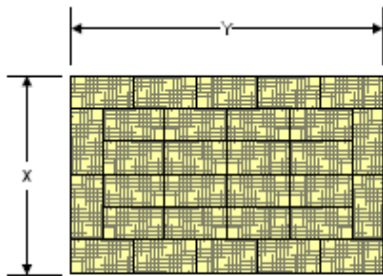
1. FILTER BAG LOCATION SHALL BE FLAGGED SO THAT BAG CAN BE REMOVED.



Bridger Pipeline LLC
455 North Poplar Street
Casper, Wyoming 82602

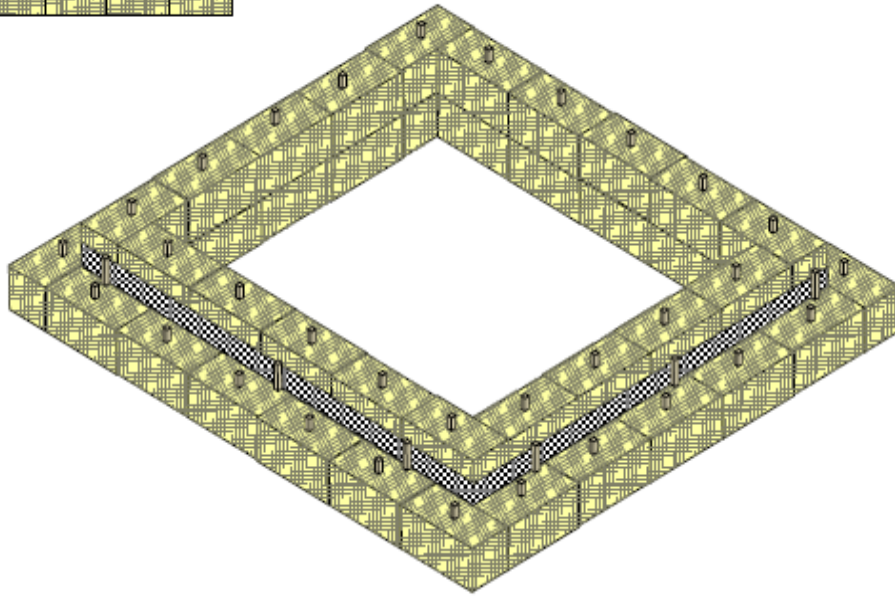
Figure 6.2.7– Typical Dewatering Measures

Heart River Pipeline
Billings and Stark Counties

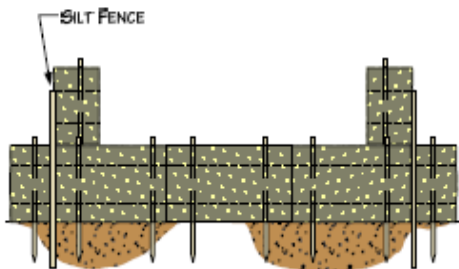


NOTES

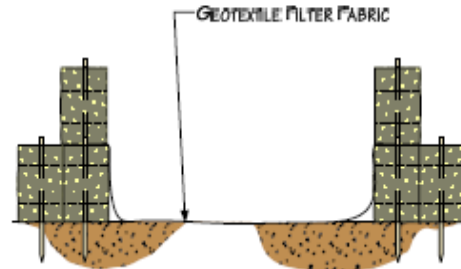
1. ARRANGE THE STRAW BALES TO THE X AND Y DIMENSIONS AS SPECIFIED BELOW.
2. IF BOTTOM OF STRUCTURE IS NOT LINED WITH STRAW BALES (OPTION 1), LINE ENTIRE STRUCTURE WITH GEOTEXTILE FILTER FABRIC.



PERSPECTIVE VIEW



OPTION 1



OPTION 2

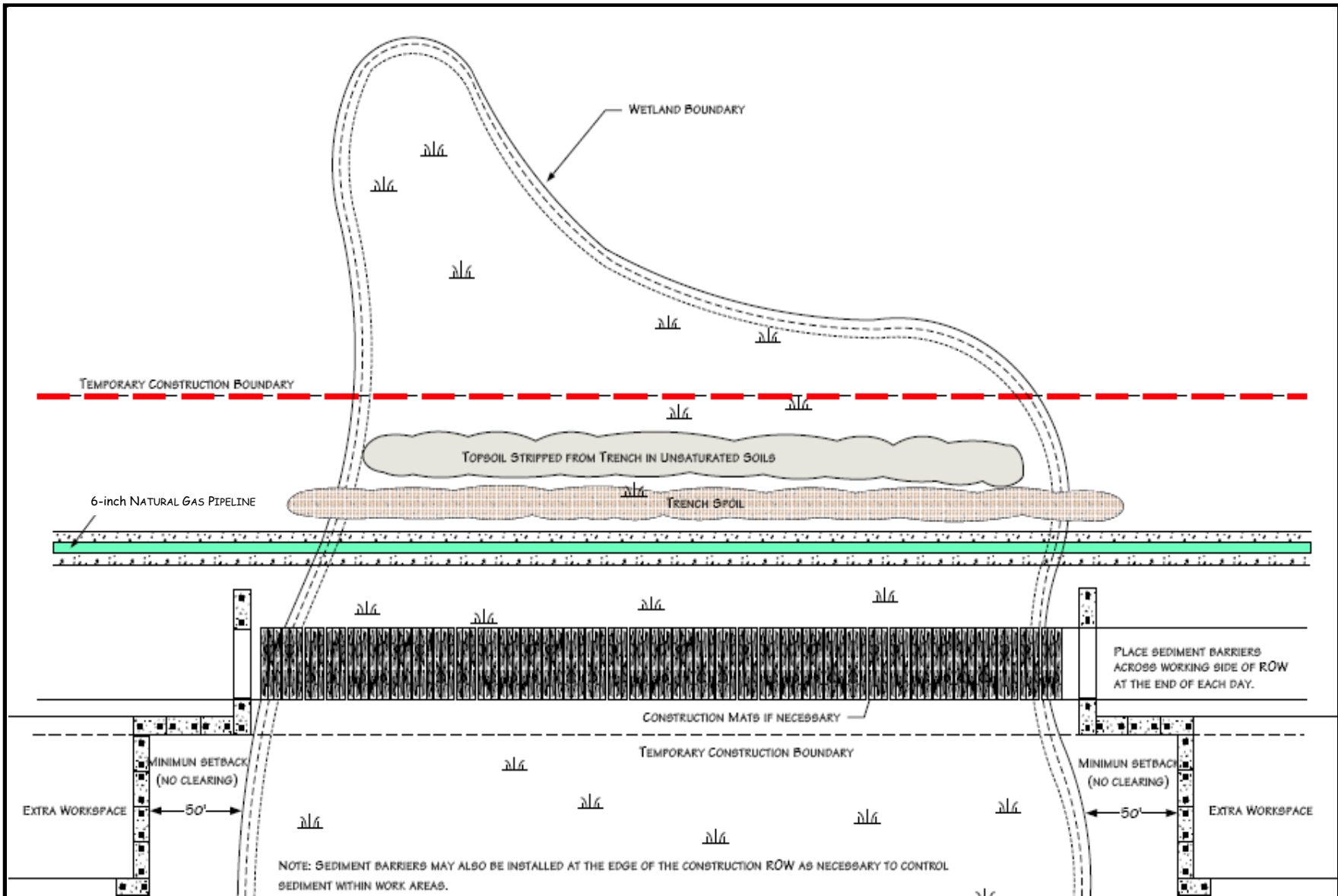
MINIMUM SUMP DIMENSIONS (FEET)		MAXIMUM PUMPING RATE GALLONS PER MINUTE
X	Y	
10	20	300
15	20	350
20	20	400
20	25	450
25	25	500
25	30	550
30	30	660



Bridger Pipeline LLC
455 North Poplar Street
Casper, Wyoming 82602

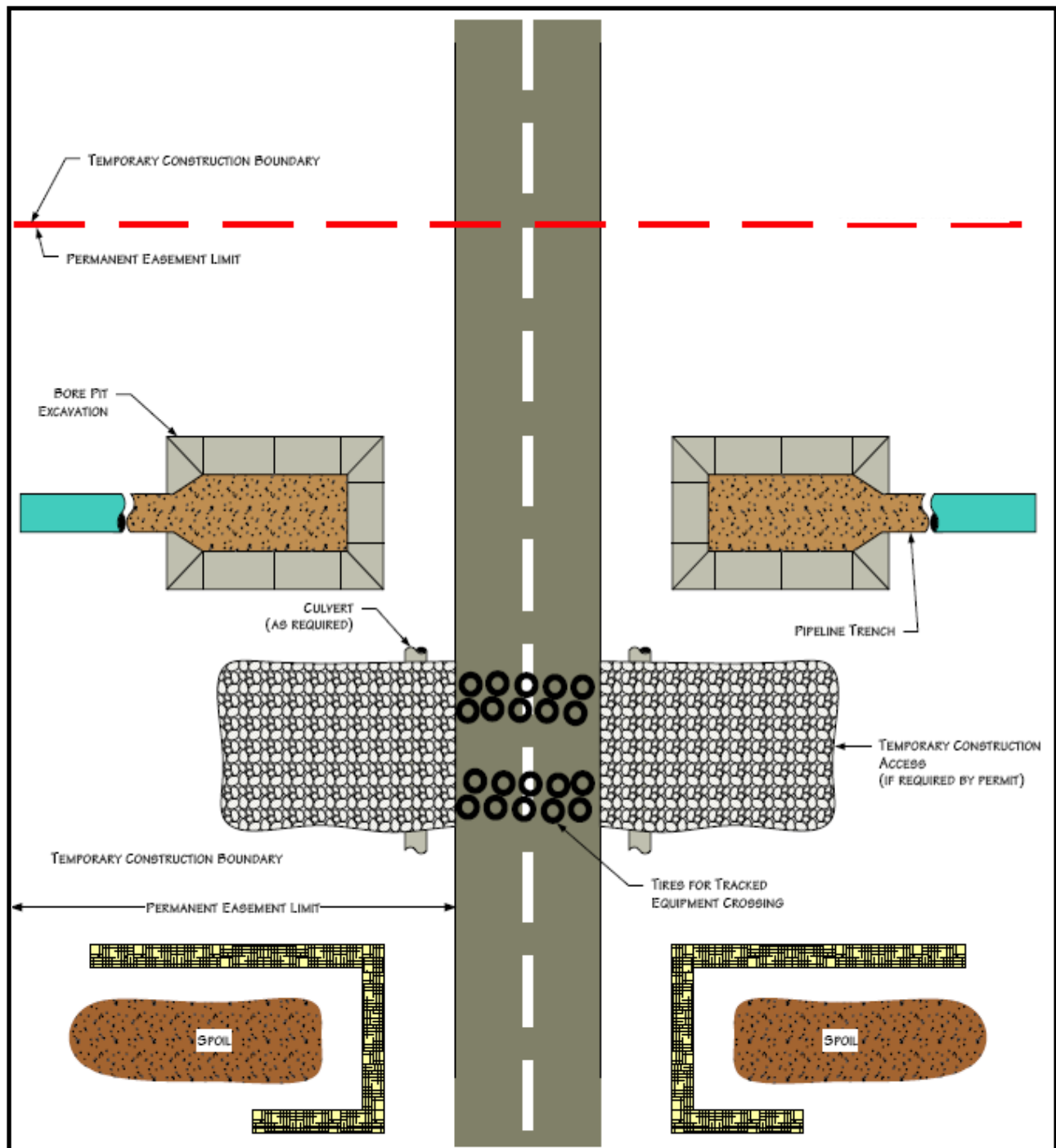
**Figure 6.2.8 Typical Straw-Bale
Dewatering Structure**

Heart River Pipeline
Billings and Stark Counties



Bridger Pipeline LLC
 455 North Poplar Street
 Casper, Wyoming 82602

Figure 6.3.1 – Typical Wetland Crossing Method
 Heart River Pipeline
 Billings and Stark Counties



PLAN VIEW

NOTES

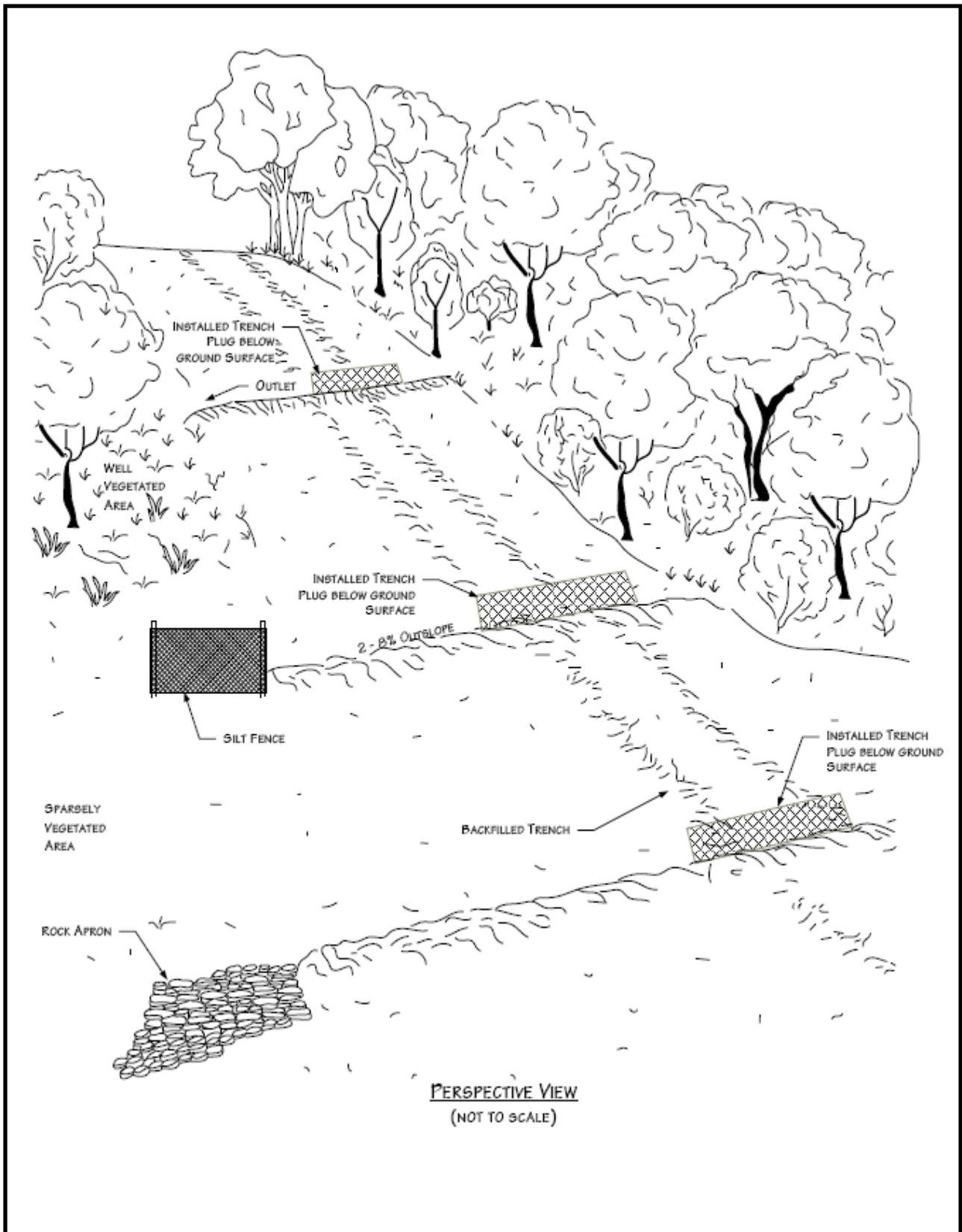
1. PROCEDURES SHOWN IN THIS DRAWING APPLY TO IMPROVED ROADS.
2. ROADS MUST BE CLEANED AFTER EQUIPMENT CROSSES AND DIRT PLACED IN SPOIL CONTAINMENT AREAS.
3. TEMPORARY ACCESS MATERIALS MUST BE REMOVED UPON PROJECT COMPLETION.
4. ADDITIONAL INFORMATION INCLUDED ON OTHER DRAWINGS OR PERMITS.
5. CONSTRUCTION AREAS LOCATED OUTSIDE ROAD ROW.



Bridger Pipeline LLC
 455 North Poplar Street
 Casper, Wyoming 82602

Figure 6.4.1 Typical Improved Road Crossing-Directional Bore Method

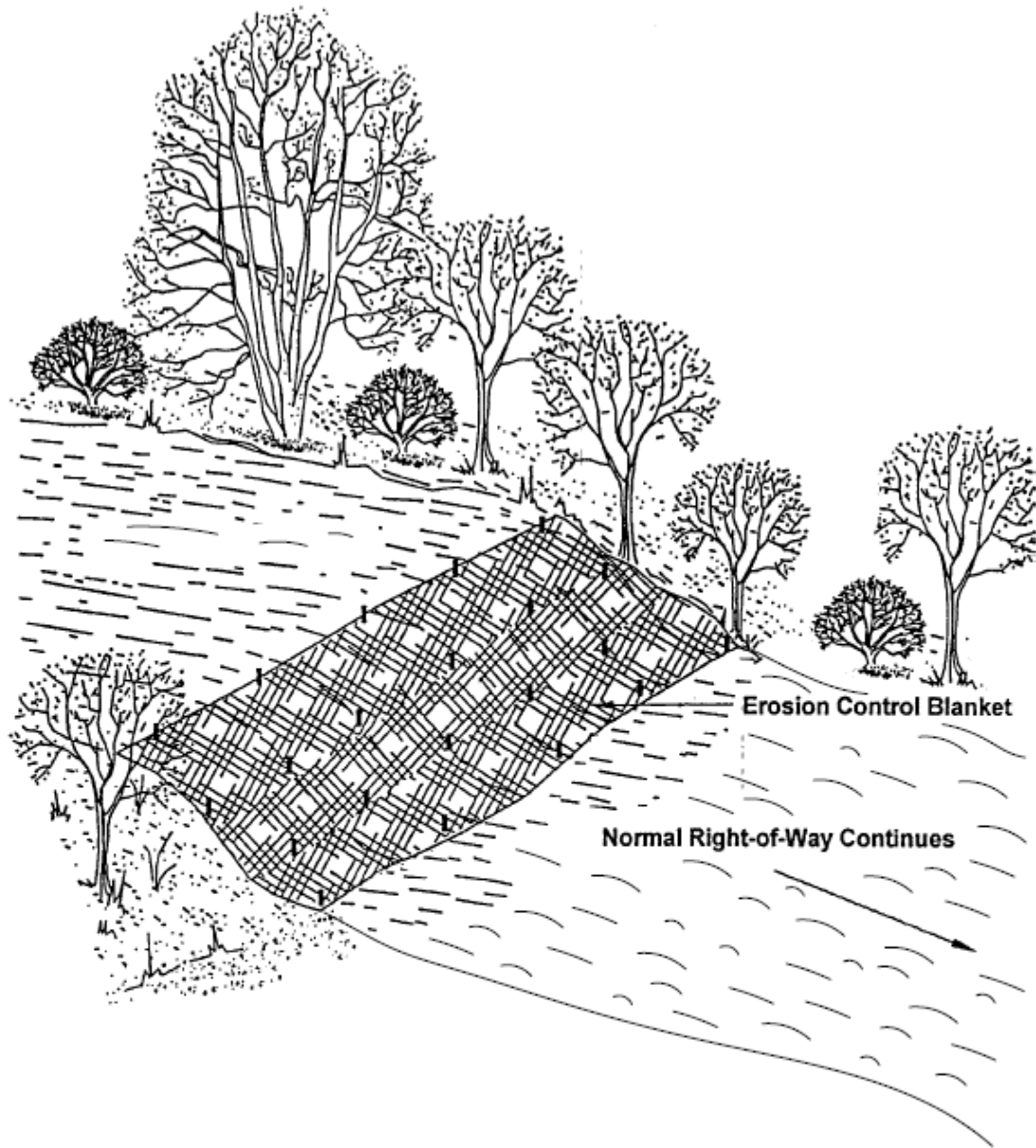
Heart River Pipeline
 Billings and Stark Counties



Bridger Pipeline LLC
 455 North Poplar Street
 Casper, Wyoming 82602

**Figure 6.7.1 – Permanent Slope Breakers
 Perspective View**

Heart River Pipeline
 Billings and Stark Counties



NOTES

1. INSTALL EROSION CONTROL BLANKET AS PER MANUFACTURER'S SPECIFICATIONS.
2. ADDITIONAL INFORMATION INCLUDED ON OTHER DRAWINGS.

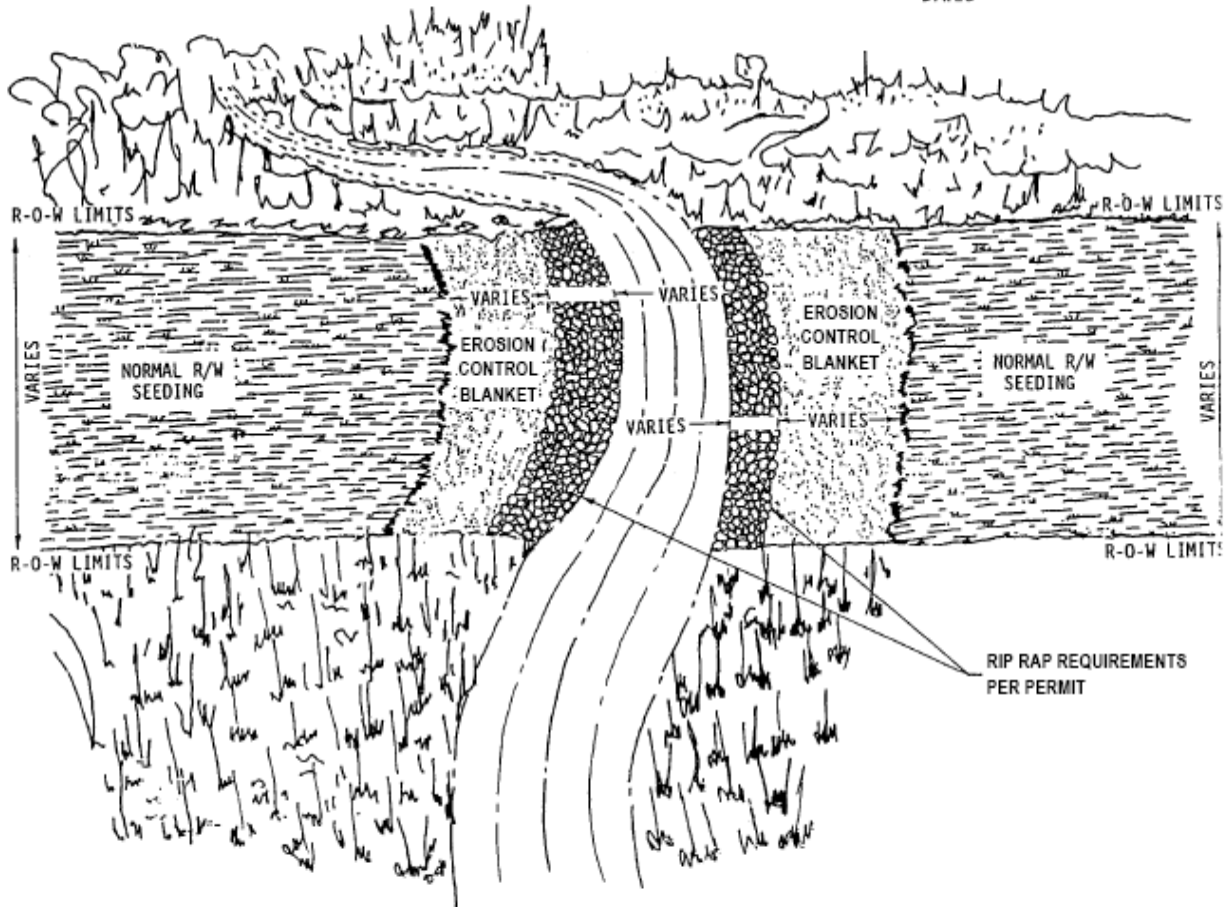


Bridger Pipeline LLC
455 North Poplar Street
Casper, Wyoming 82602

**Figure 6.7.2 – Erosion Control Blanket
Steep Slopes (>30%)**

Heart River Pipeline
Billings and Stark Counties

NOTE: PLACE JUTE BLANKET A MINIMUM OF ONE (1) FOOT UNDER RIP RAP. EXTEND JUTE BLANKET FROM MEAN HIGH WATER LEVEL TO SEVERAL FEET BEHIND HIGH BANK.



Bridger Pipeline LLC
455 North Poplar Street
Casper, Wyoming 82602

Figure 6.7.3 –Typical Final Stream Bank Stabilization-Rip Rap & Erosion Control

Heart River Pipeline
Billings and Stark Counties