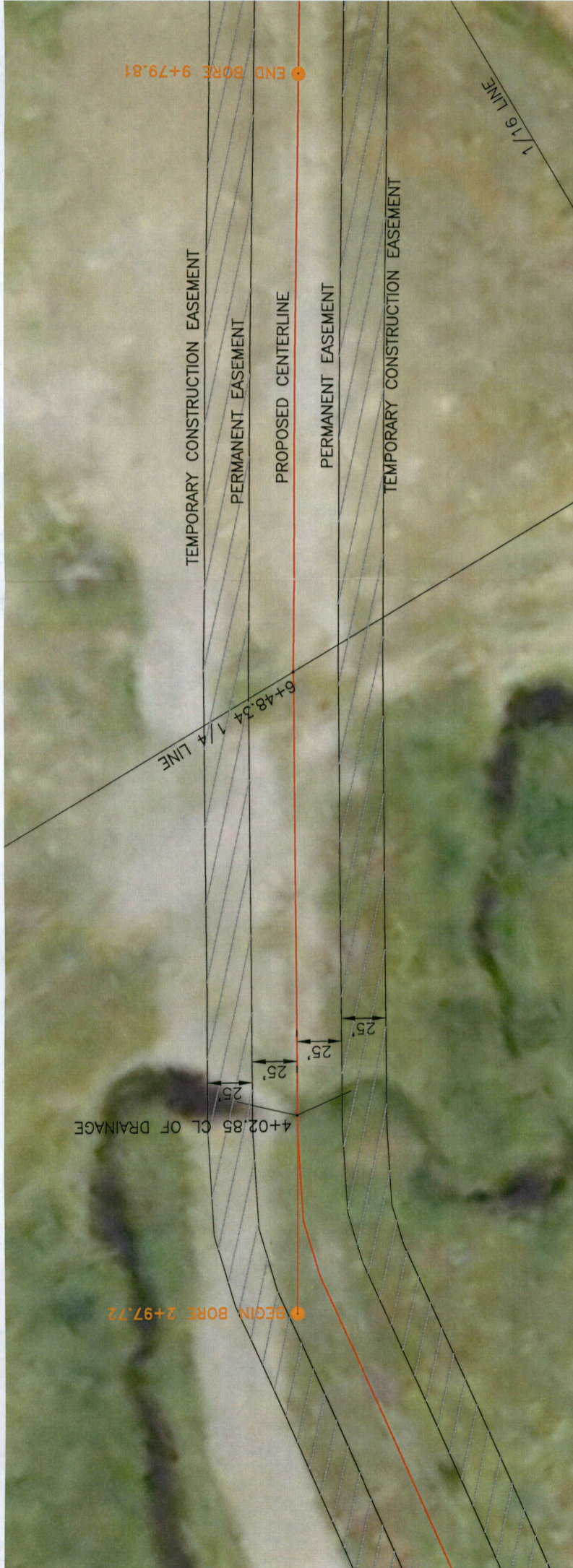


# HEART RIVER CROSSING BORE

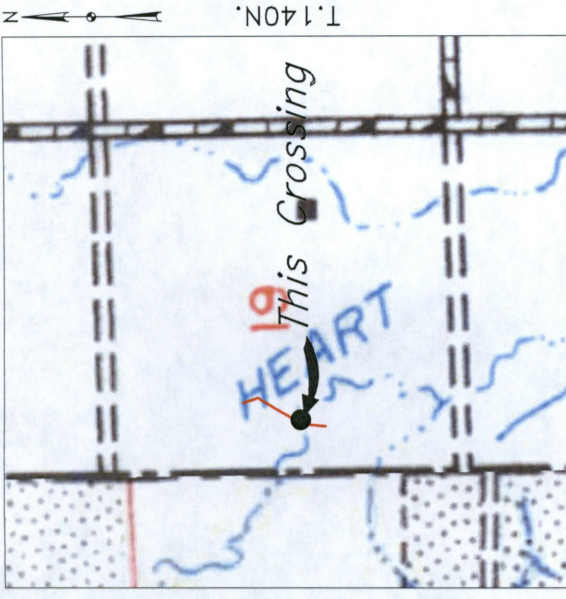
STARK COUNTY, NORTH DAKOTA



STARK COUNTY  
SW1/4, SEC. 19,  
T1140N, R99W

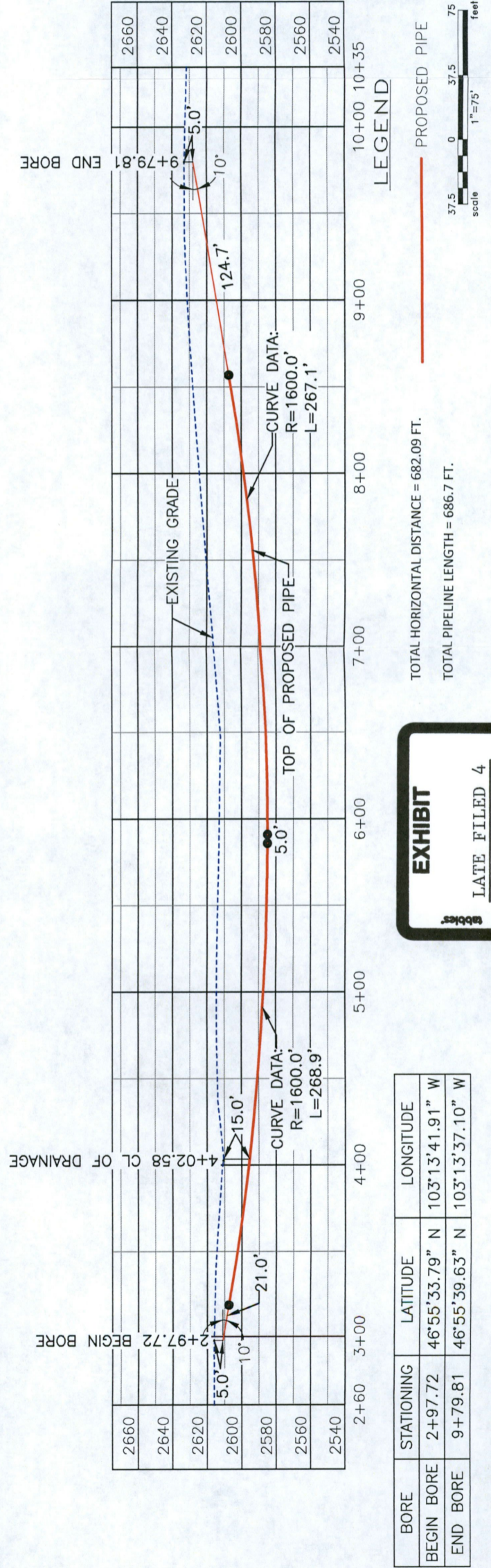
STARK COUNTY  
NW1/4, SEC. 19,  
T1140N, R99W

R.99W.  
Location Map



PIPE SPECIFICATION  
16.00" O.D., .375" WT, X52,  
14-16 MIL FBE, 30 MIL ABO

This document  
is preliminary  
and  
is for  
CONSTRUCTION  
Implementation or  
purposes.



TOTAL HORIZONTAL DISTANCE = 682.09 FT.  
TOTAL PIPELINE LENGTH = 686.7 FT.

**EXHIBIT**  
LATE FILED 4

BORE	STATIONING	LATITUDE	LONGITUDE
BEGIN BORE	2+97.72	46°55'33.79" N	103°13'41.91" W
END BORE	9+79.81	46°55'39.63" N	103°13'37.10" W

HEART RIVER CROSSING BORE  
Stark County, North Dakota

**KLJ** Bridger Pipeline LLC  
455 N. Poplar, P.O. Drawer 2380  
Casper, WY 82601

DRAWN BY: C. ONIK  
CHECKED BY: C. FOSTER  
PROJECT NO.: 3715502  
DATE: 8/9/2015  
C:\Users\chancegrnk\appdata\local\temp\AcPublish\_8128\3715502\bas01\_HeartRiverBore.dwg

SHEET NO. 1 of 1

Aug 06, 2015 - 10:01am - C:\Users\chancegrnk\appdata\local\temp\AcPublish\_8128\3715502\bas01\_HeartRiverBore.dwg