



BRIDGER

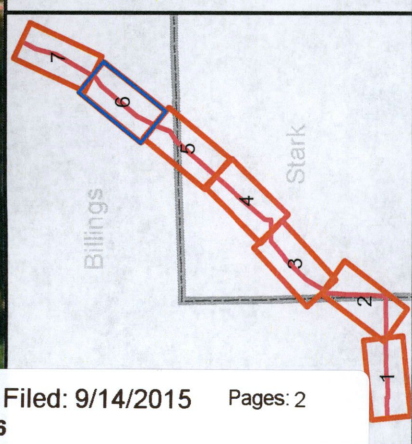
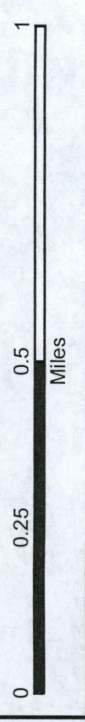
Heart River Pipeline
Billings and Stark Counties
Figure 4.B.6b - Route Map

Printed: 7/10/2015

EXHIBIT
LATE FILED 6

Legend

- Proposed Centerline
- Northern Harrier
- Swainson's Hawk
- Field Survey Corridor





Unoccupied Residence



Abandoned Buildings