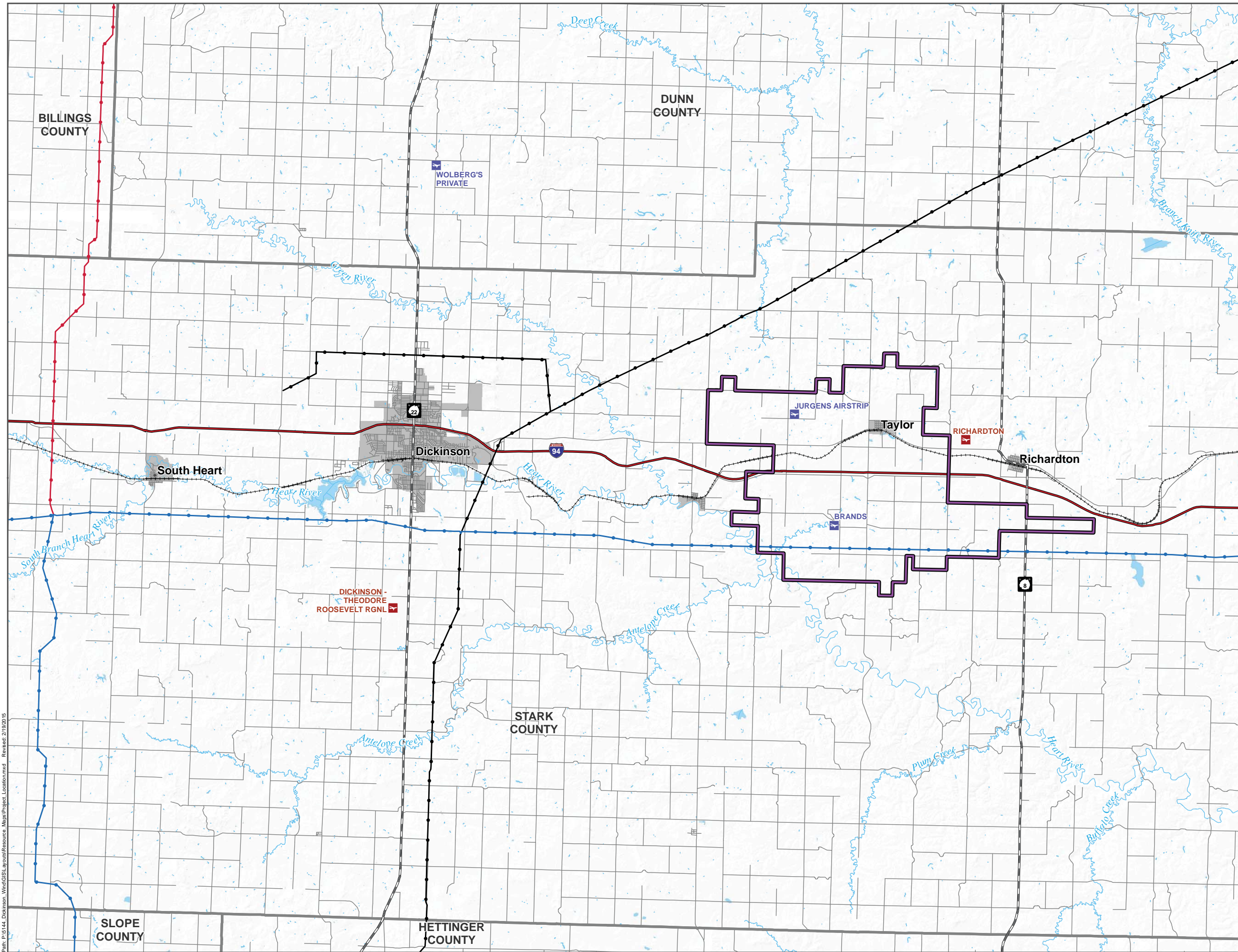
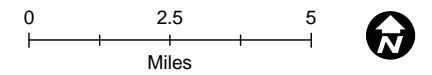


Dickinson Wind Energy Center



Legend

- Project Boundary (11/10/14)
- Existing Electrical Transmission**
- 115kV Transmission Line
- 230kV Transmission Line
- 345kV Transmission Line
- Transportation**
- Public Airport
- Private Airport
- Interstate Highway
- U.S. Highway
- State Highway
- Rail
- County Road



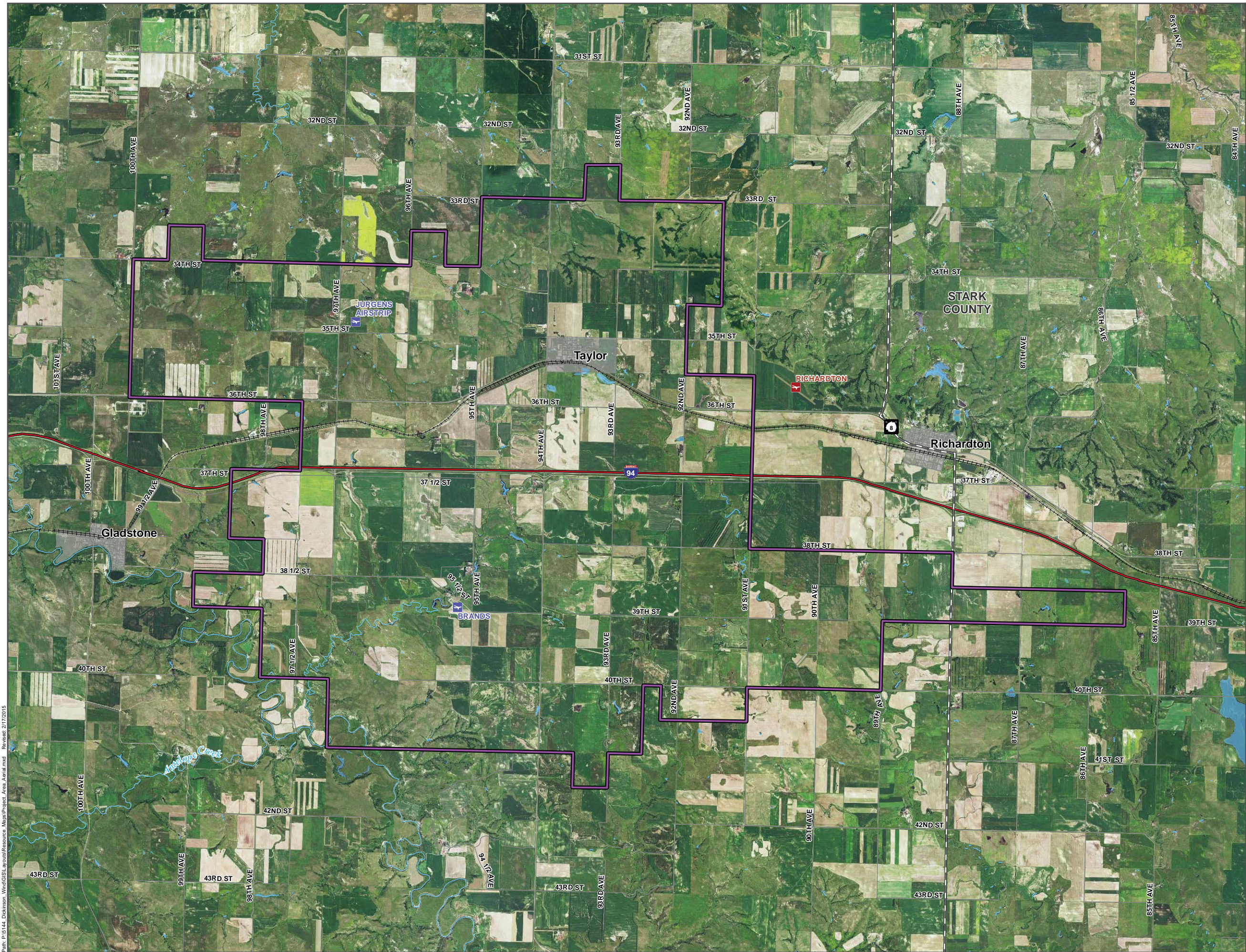
Scale is 1:108,000 when printed at 22 x 34











Path: P:\144_Dickinson_Wind\GIS\Layouts\Resource_Maps\Project_Location.mxd, Revised: 2/19/2015

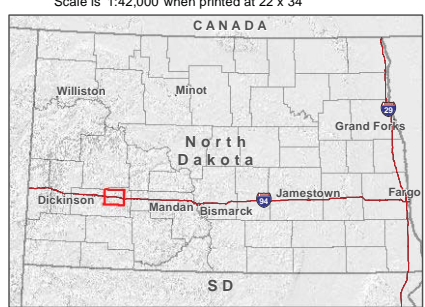
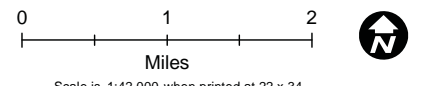
Figure 1: Project Location

Dickinson Wind Energy Center



Legend

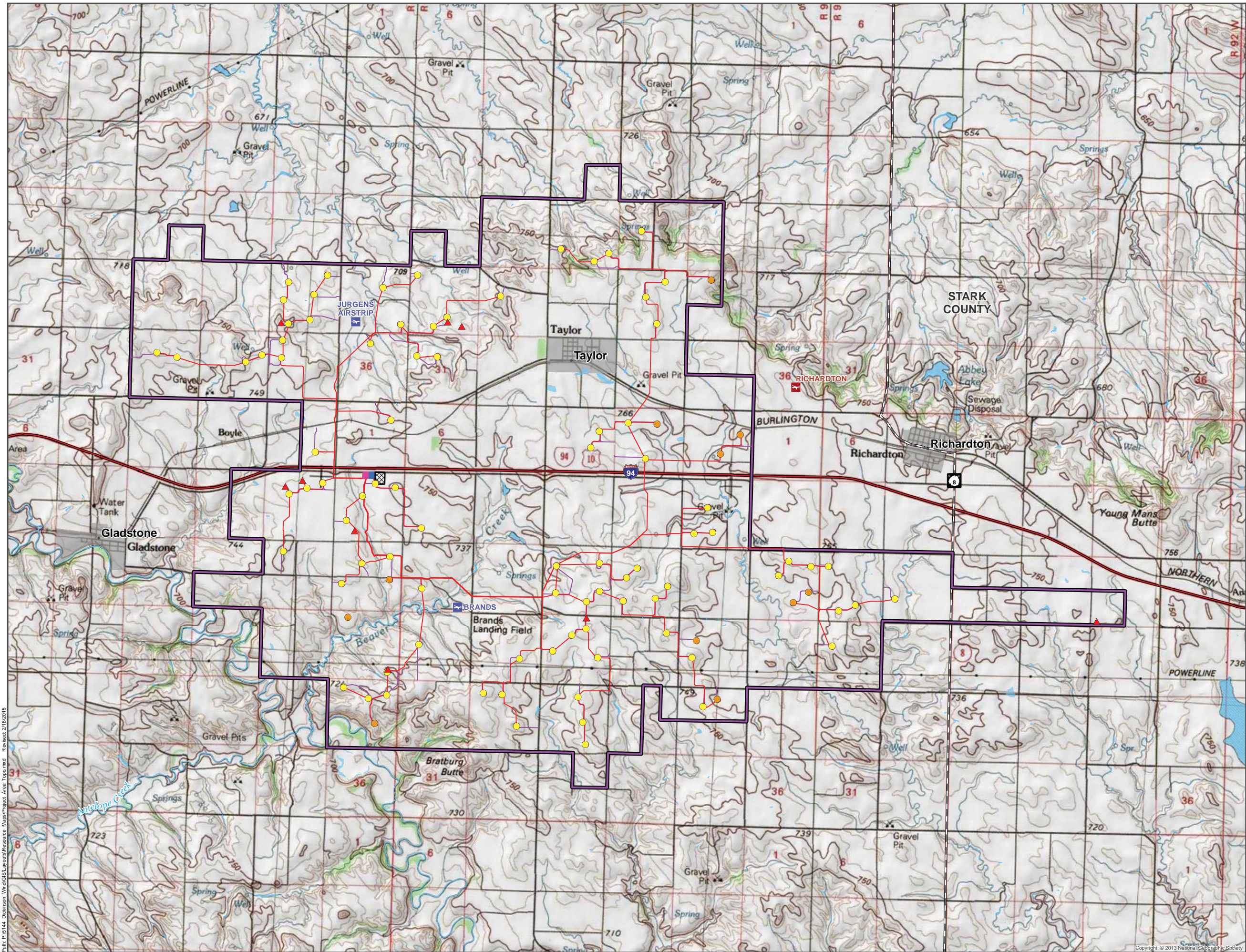
-  Project Boundary (11/10/14)
- Transportation**
-  Public Airport
-  Private Airport
-  Interstate Highway
-  U.S. Highway
-  State Highway
-  Rail
-  County Road



Path: P:\6144_Dickinson_Wind\GIS\Layouts\Resource_Maps\Project_Area_Aerial.mxd Revised: 2/17/2015

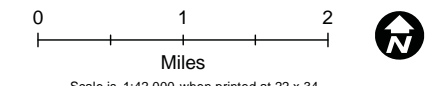
Figure 2: Project Area (Aerial)

Dickinson Wind Energy Center



Legend

- ▲ Met Tower (02/06/15)
 - Proposed Turbine (01/29/15)
 - Alternative Turbine (01/29/15)
 - Collection System (02/09/15)
 - Service Roads (02/06/15)
 - Project Boundary (11/10/14)
 - Laydown
 - O&M Building
 - Substation
- ### Transportation
- ✈ Public Airport
 - ✈ Private Airport
 - Interstate Highway
 - U.S. Highway
 - State Highway
 - Rail
 - County Road



Scale is 1:42,000 when printed at 22 x 34

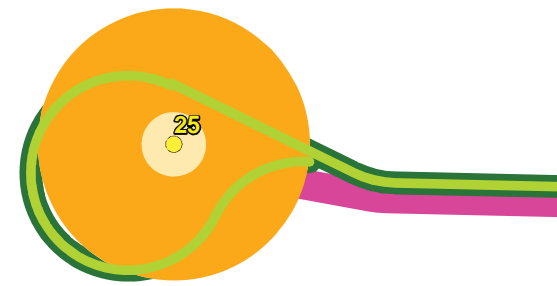


Path: P:\144_Dickinson_Wind\GIS\Layouts\Resource_Maps\Project_Area_Top.mxd Revised: 2/18/2015

Copyright © 2013 National Geographic Society

Figure 3: Project Area (Topographical)

Impact Buffer Inset

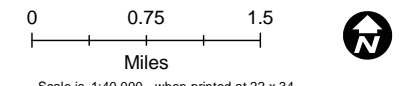
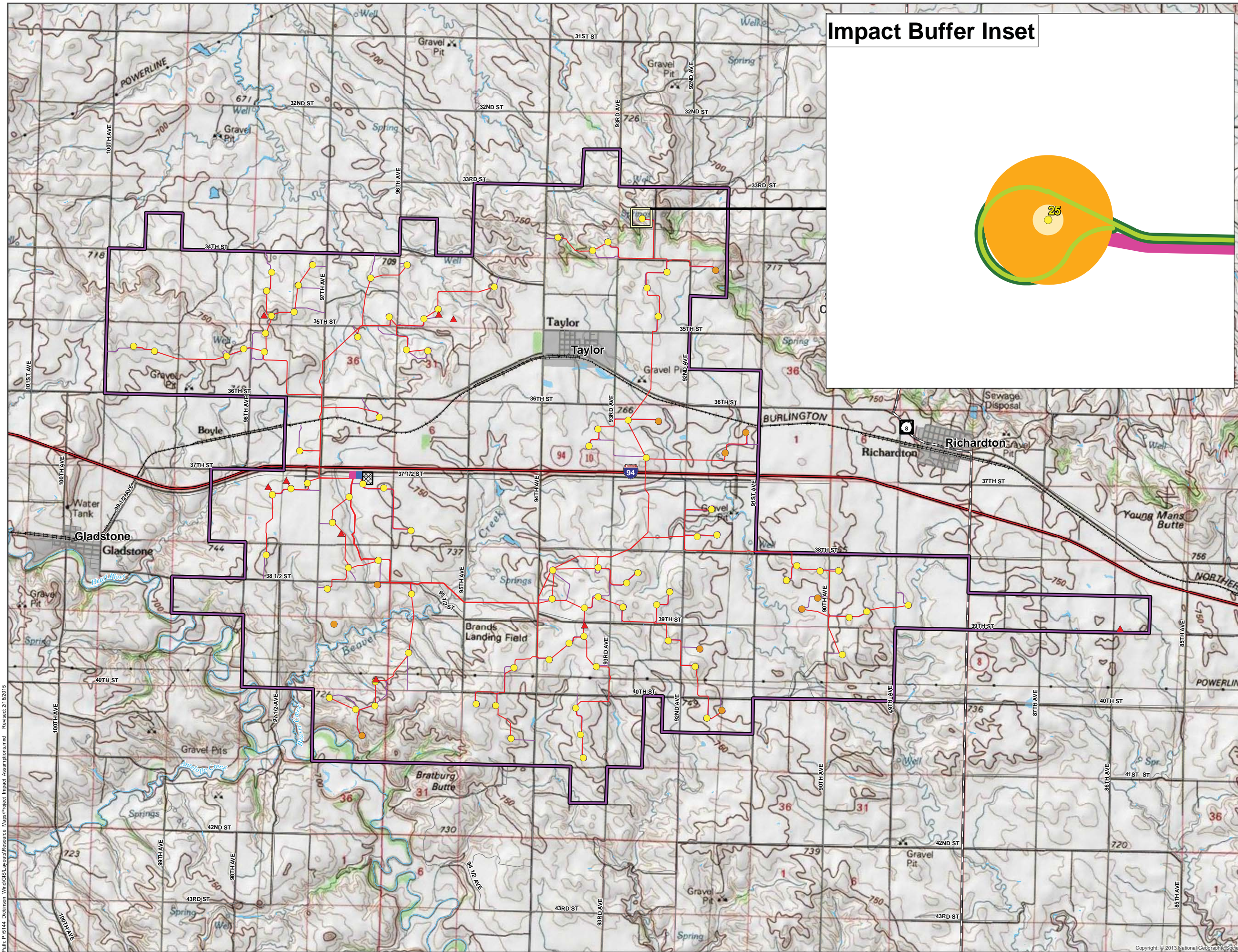


Legend

- Project_boundary (11/10/14)
- Met Tower (02/06/15)
- Proposed Turbine (01/29/15)
- Alternative Turbine (01/29/15)
- Collection System (02/09/15)
- Service Roads (02/06/15)
- Laydown
- O&M Building
- Substation

Impact Assumptions

- Temporary Turbine Impact Buffer
- Temporary Service Road Impact Buffer
- Temporary Collection Line Buffer
- Permanent Turbine Impact Buffer
- Permanent Service Road Impact Buffer



Path: P:\144_Dickinson_Wind\GIS\Layouts\Impact_Assumptions.mxd Revised: 2/19/2015

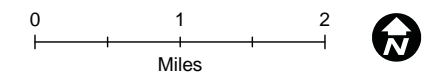
Copyright: © 2013 National Geographic Society

Figure 4: Project Impact Assumptions

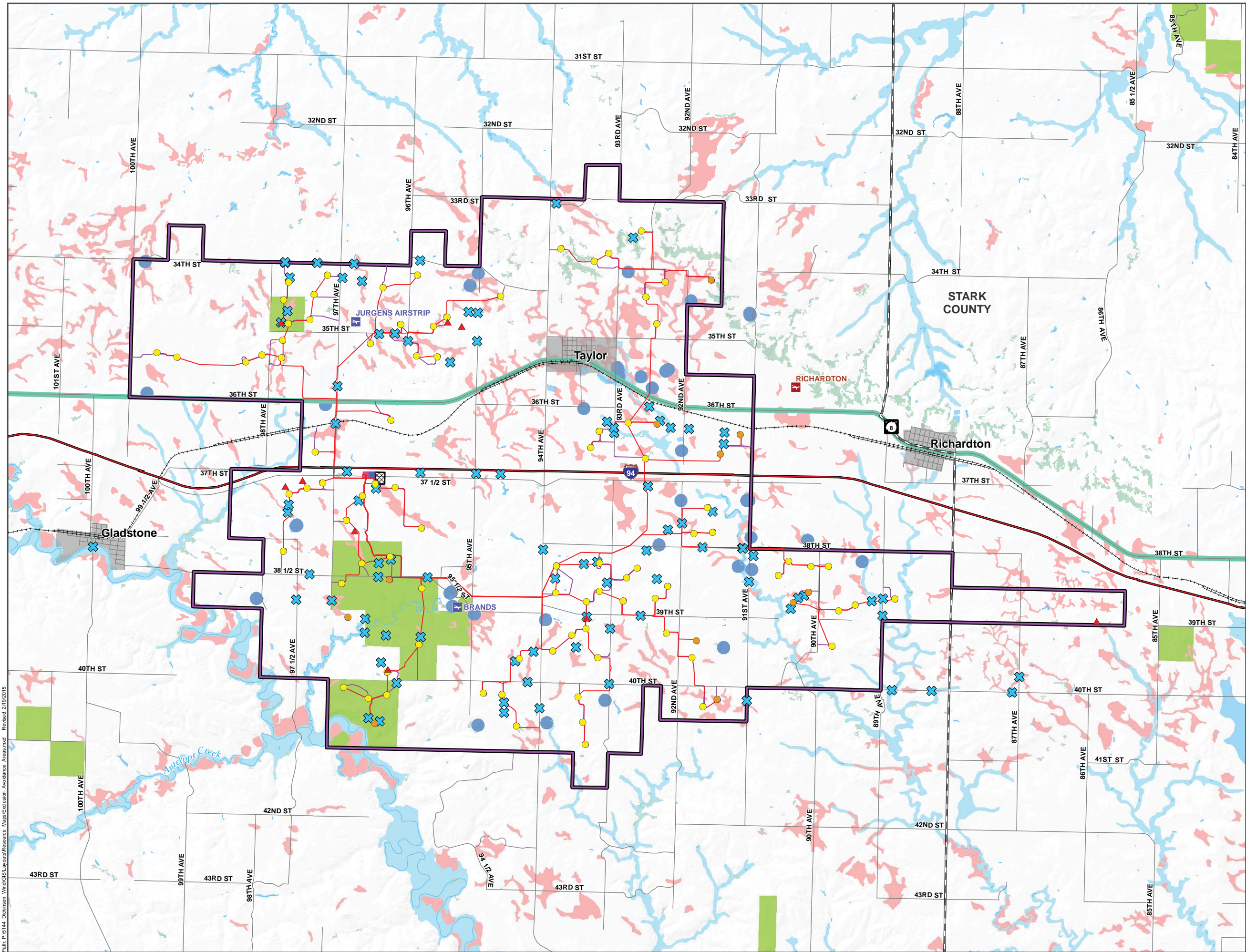
Dickinson Wind Energy Center

Legend

- ▲ Met Tower (02/06/15)
 - Proposed Turbine (01/29/15)
 - Alternative Turbine (01/29/15)
 - Collection System (02/09/15)
 - Service Roads (02/06/15)
 - Project Boundary (11/10/14)
 - Laydown
 - O&M Building
 - Substation
- ### Transportation
- ✈ Public Airport
 - ✈ Private Airport
 - Interstate Highway
 - U.S. Highway
 - State Highway
 - Rail
 - County Road
- ### Exclusion
- Prime Farmland
- ### Avoidance
- ✕ Surveyed Wetland
 - Scenic Byway
 - 100-year Floodplain
 - Occupied Residence - 500ft buffer
 - NLCD Forest
 - North Dakota Game & Fish Conservation PLOTS Recreational Easement (Private Land Open to Sportsmen)

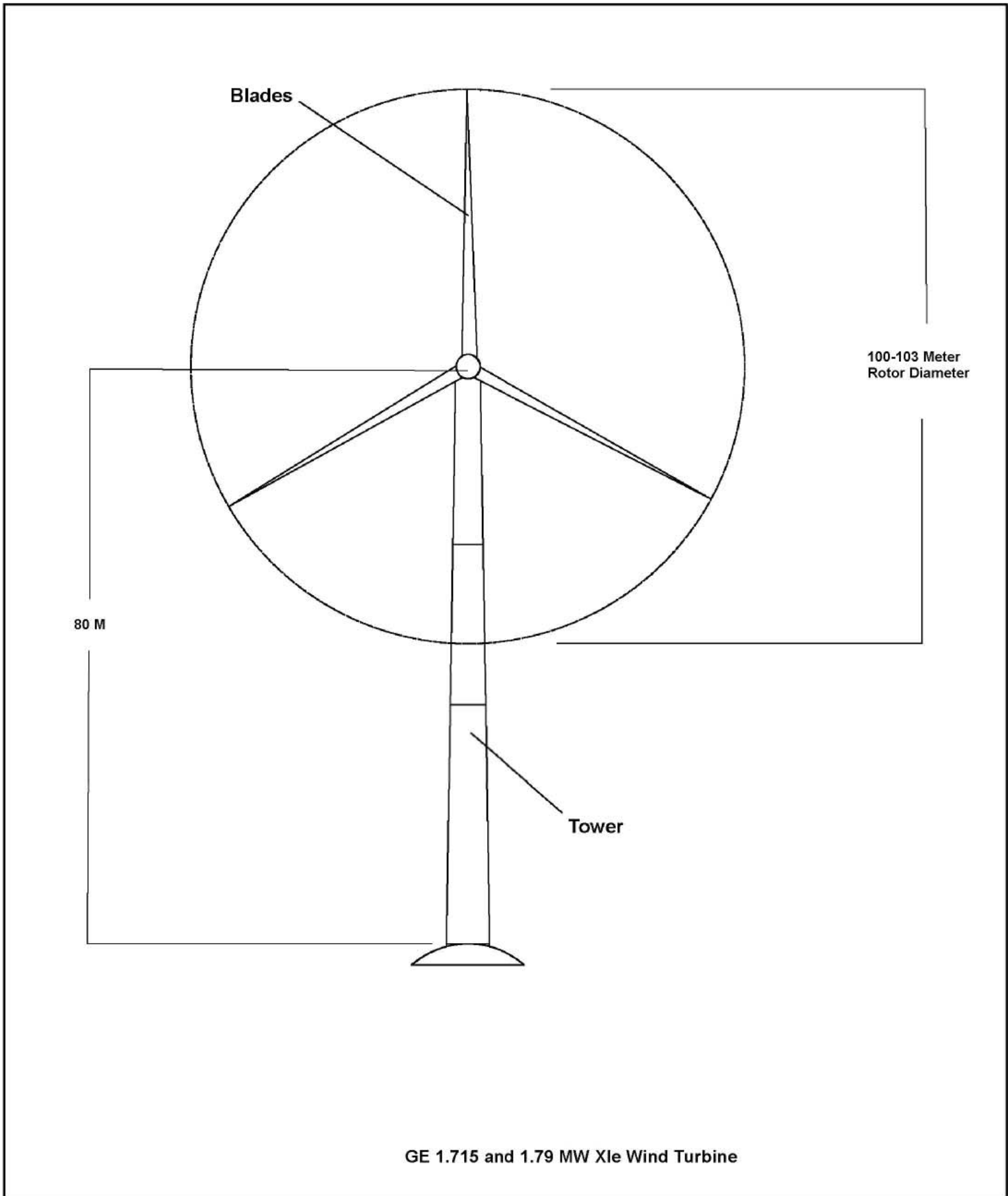


Scale is 1:42,000 when printed at 22 x 34



Path: P:\6144_Dickinson_Wind\GIS\Layouts\Resource_Maps\Exclusion_Avoidance_Areas.mxd Revised: 2/19/2015

Figure 5: Exclusion and Avoidance Areas



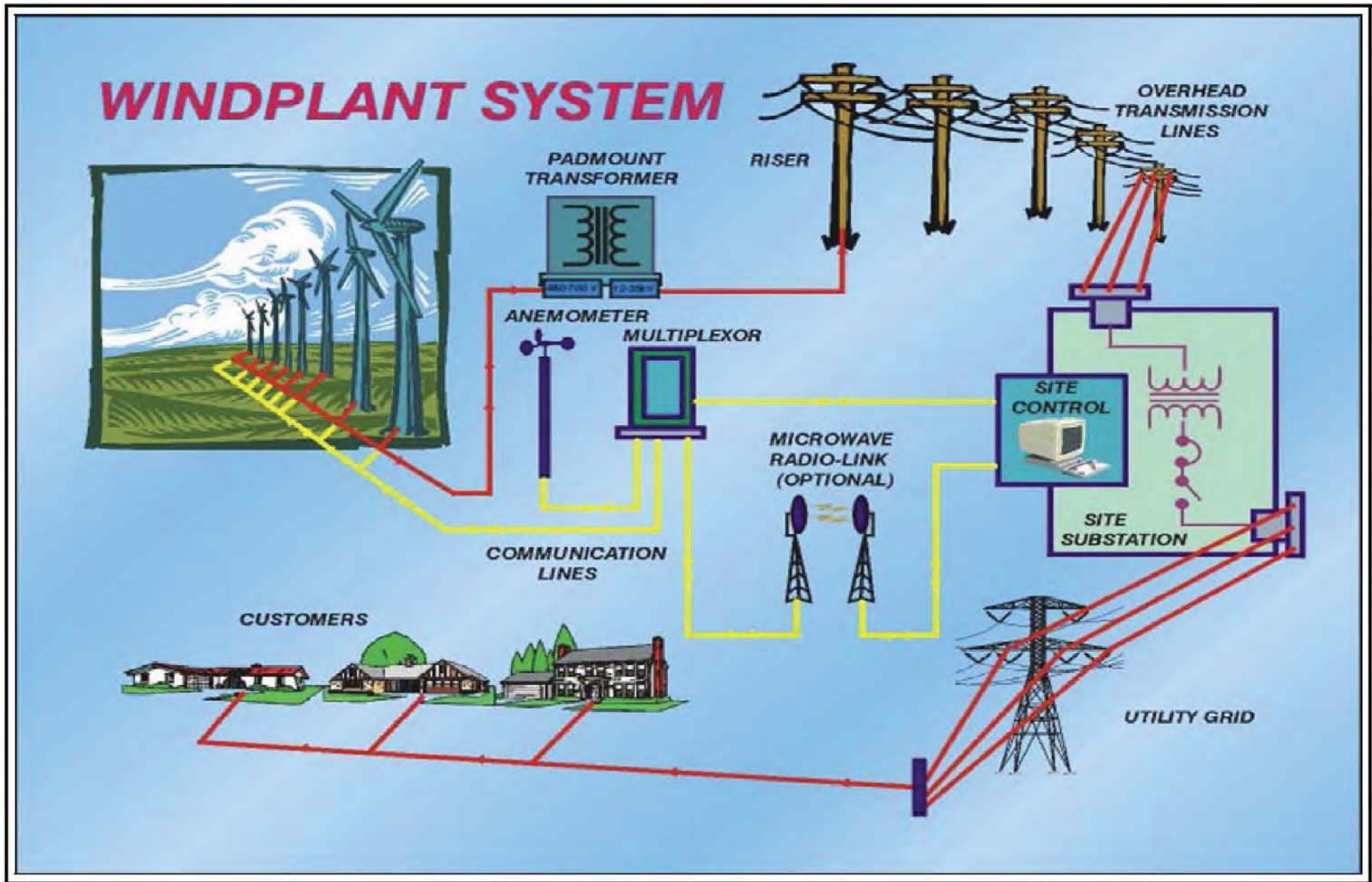


Figure 7
 Path of Energy Diagram
 Dickinson Wind Energy Center

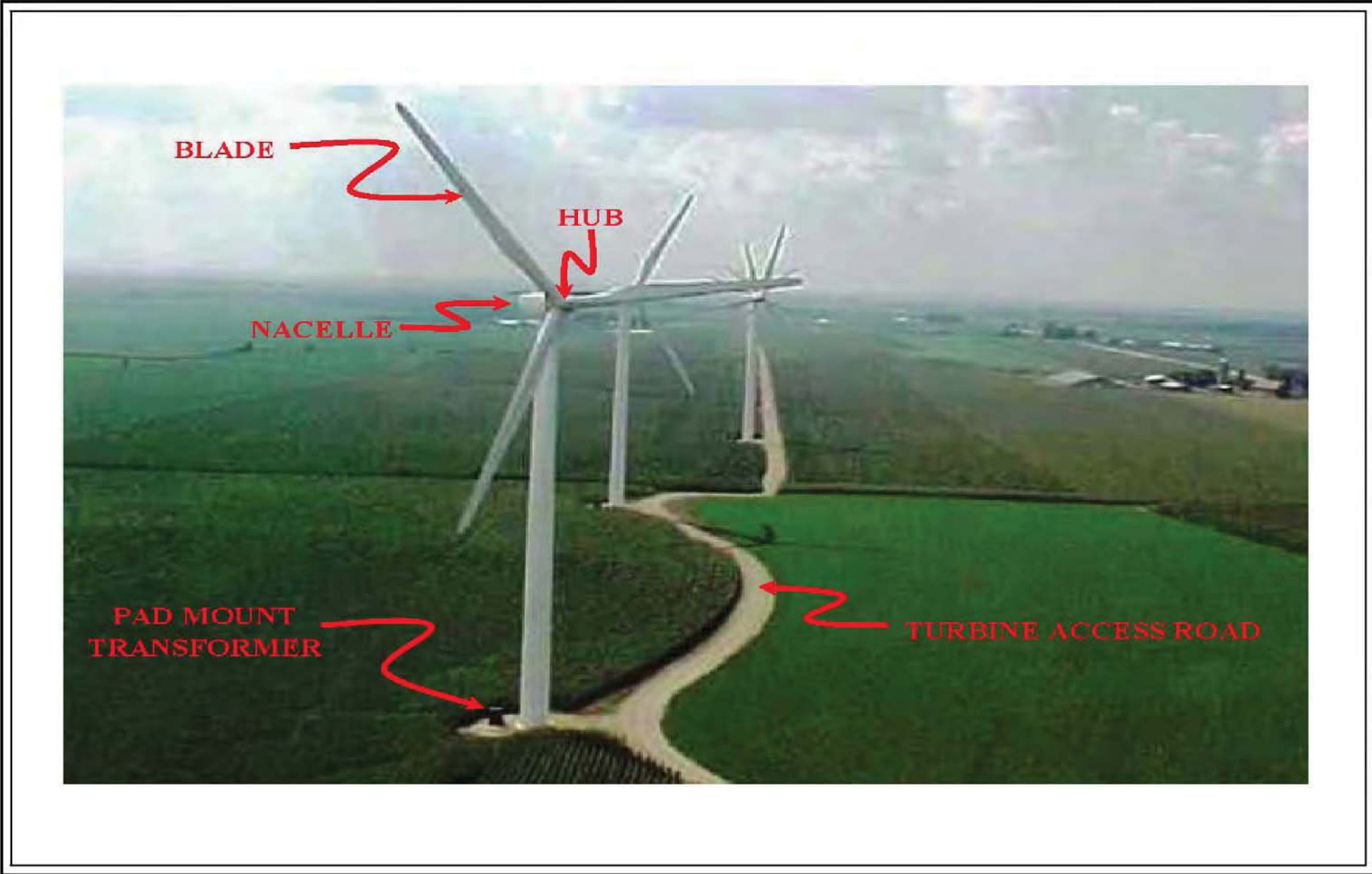
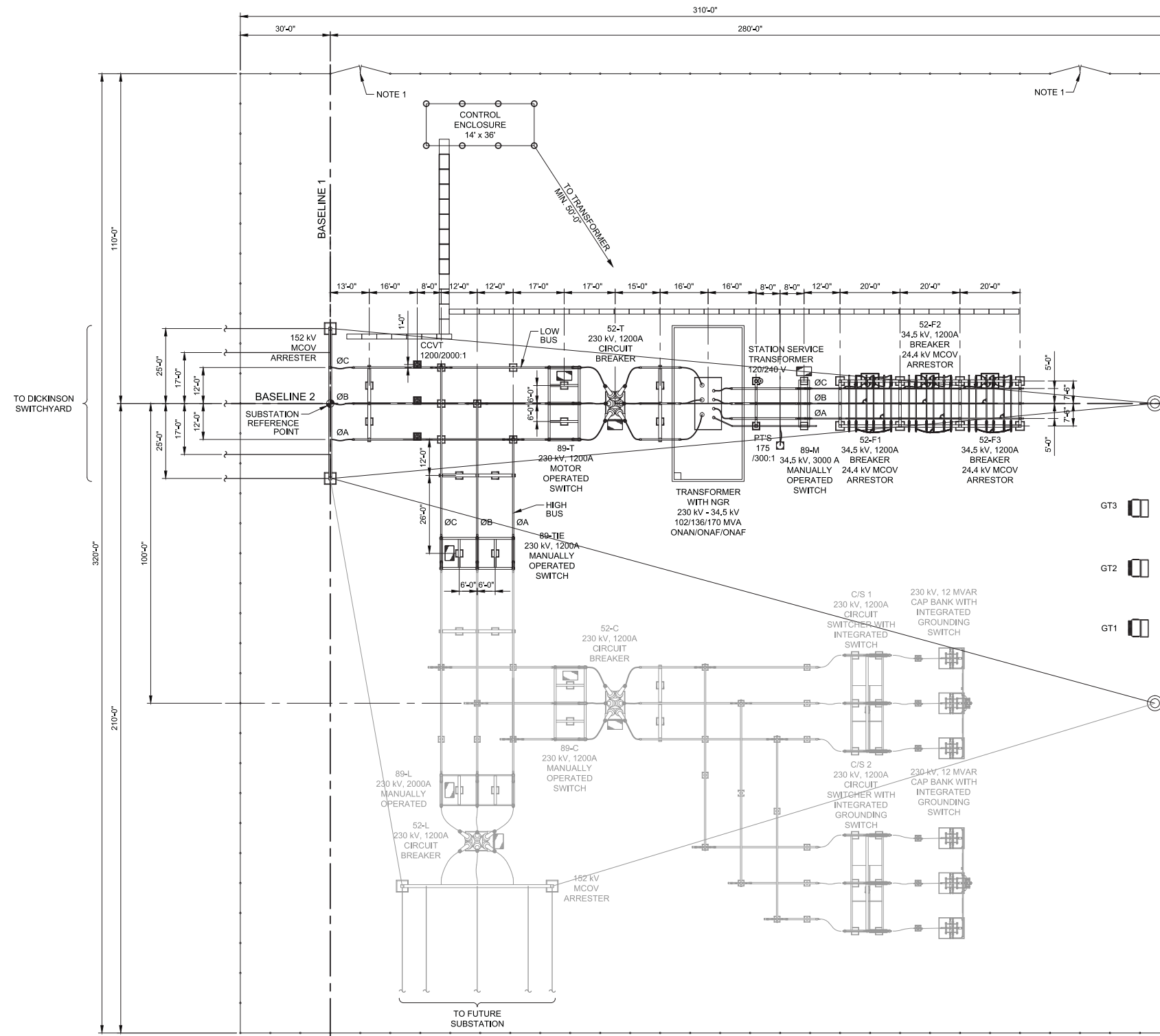


Figure 8
Typical Wind Energy Center Layout
Dickinson Wind Energy Center

REVISIONS				
REV	DESCRIPTION	DSN	CHK	DATE
A	PRELIMINARY	ADR	SMA	11/17/14
B	ISSUED FOR REVIEW	ADR	JW	11/21/14
C	REVISED PRELIMINARY	ADR	JW	12/17/14
D	REVISED SUBSTATION CONFIGURATION	ADR	JW	01/05/15
E	ADDED FUTURE LINE BREAKER	ADR	JW	01/13/15

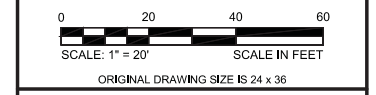
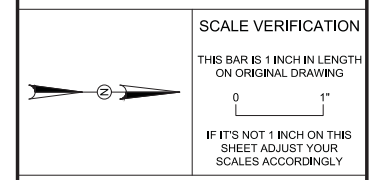


LEGEND

- NEW CONSTRUCTION
- NEW SUBSTATION FENCE
- FUTURE CONSTRUCTION

NOTES

- LOCATION TO BE DETERMINED.



GENERAL ARRANGEMENT

DICKINSON SUBSTATION



FOR REVIEW

PROJECT NO.	20153420	G.102
ISSUE DATE	12/17/14	
CURRENT REVISION	E	
DESIGNED BY	A. RICHARDSON	
CHECKED BY	S. ARNDT	

DRAFT

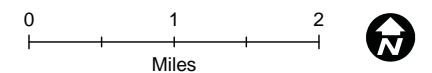
Figure 9: Substation Site Plan

2 FILE: W:\2015\3420_Nextera_Dickinson_Substation\0 KLF Drawings\5.1 DWG\5.102 GENERAL ARRANGEMENT.dwg LAYOUT: G.102 GENERAL ARRANGEMENT PLOTTED: 11/20/15 3:52 PM BY: amber richardson

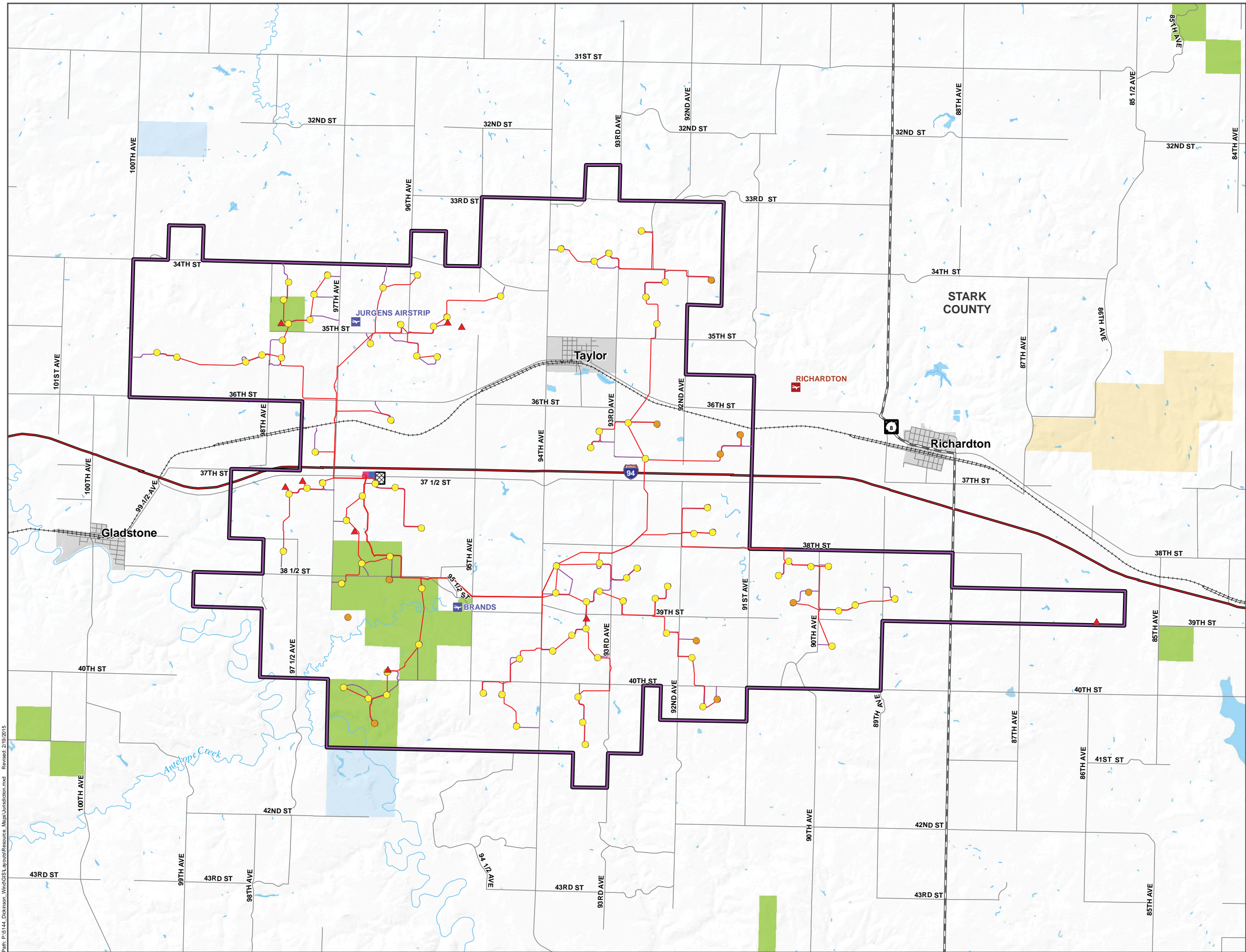
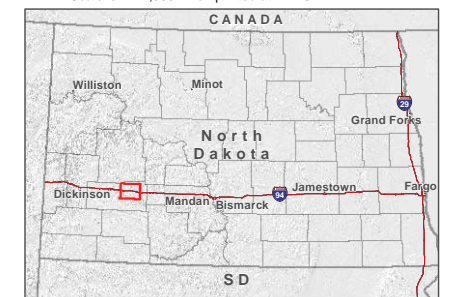
Dickinson Wind Energy Center

Legend

- ▲ Met Tower (02/06/15)
 - Proposed Turbine (01/29/15)
 - Alternative Turbine (01/29/15)
 - Collection System (02/09/15)
 - Service Roads (02/06/15)
 - Project Boundary (11/10/14)
 - Laydown
 - O&M Building
 - Substation
- Transportation**
- ✈ Public Airport
 - ✈ Private Airport
 - Interstate Highway
 - U.S. Highway
 - State Highway
 - Rail
 - County Road
- Jurisdiction**
- Federal**
- Bureau of Land Management
- State**
- State Trust Land
- Other**
- North Dakota Game & Fish Conservation PLOTS Recreational Easement (Private Land Open to Sportsmen)



Scale is 1:42,000 when printed at 22 x 34



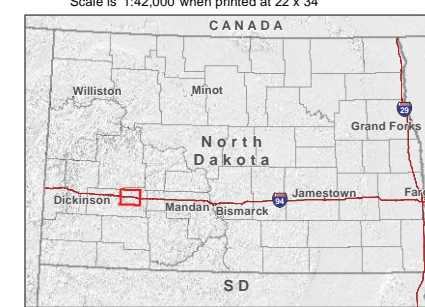
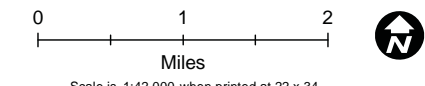
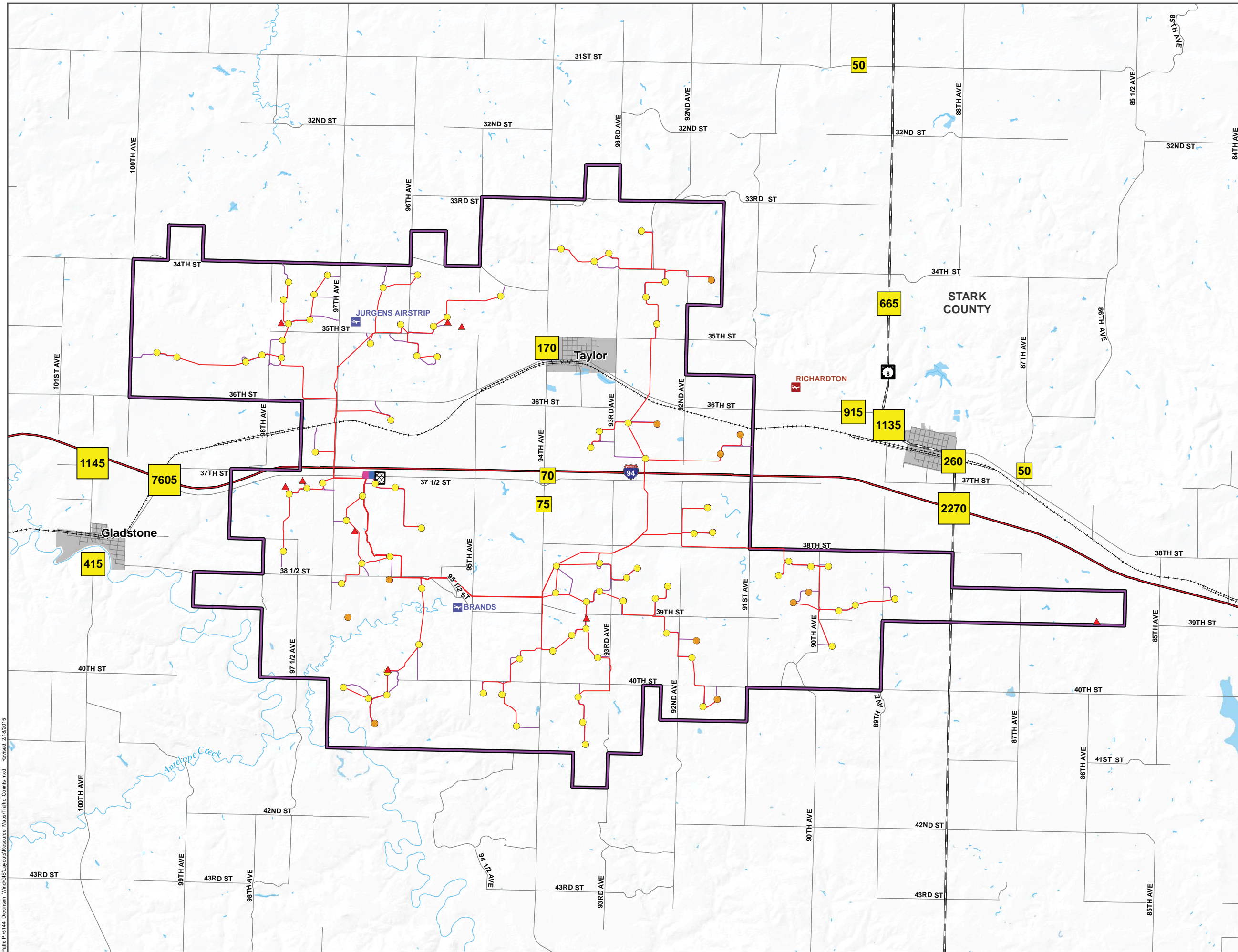
Path: P:\6144_Dickinson_Wind\GIS\Layouts\Resource_Maps\Jurisdiction.mxd Revised: 2/10/2015

Figure 10: Public Lands and Easements

Dickinson Wind Energy Center

Legend

- ▲ Met Tower (02/06/15)
 - Proposed Turbine (01/29/15)
 - Alternative Turbine (01/29/15)
 - Collection System (02/09/15)
 - Service Roads (02/06/15)
 - Project Boundary (11/10/14)
 - Laydown
 - O&M Building
 - Substation
- ### Transportation
- ✈ Public Airport
 - ✈ Private Airport
 - Interstate Highway
 - U.S. Highway
 - State Highway
 - Rail
 - County Road
 - 55 Average Daily Traffic Count



Path: P:\15144_Dickinson_Wind\GIS\Layouts\Resource_Maps\Traffic_Counts.mxd Revised: 2/18/2015

Figure 11: Average Daily Traffic Map

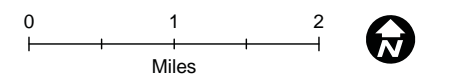


Figure 12: Photo of Typical Landscape

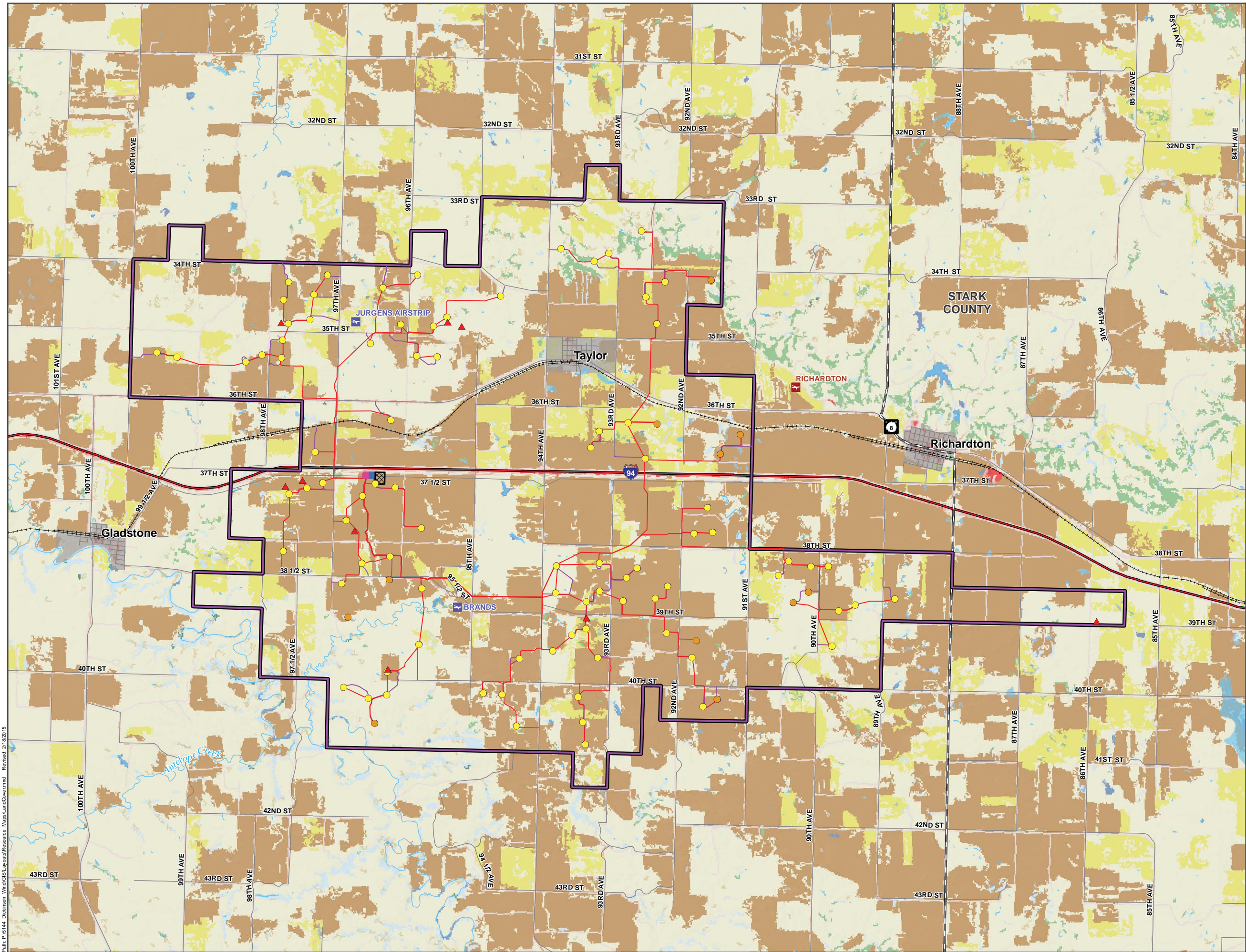
Dickinson Wind Energy Center

Legend

- ▲ Met Tower (02/06/15)
 - Proposed Turbine (01/29/15)
 - Alternative Turbine (01/29/15)
 - Collection System (02/09/15)
 - Service Roads (02/06/15)
 - Project Boundary (11/10/14)
 - Laydown
 - O&M Building
 - Substation
- Transportation**
- ✈ Public Airport
 - ✈ Private Airport
 - Interstate Highway
 - U.S. Highway
 - State Highway
 - +—+—+— Rail
- NLCD Land Cover**
- Open Water
 - Developed, Open Space
 - Developed, Low Intensity
 - Developed, Medium Intensity
 - Developed, High Intensity
 - Barren Land (Rock/Sand/Clay)
 - Deciduous Forest
 - Evergreen Forest
 - Mixed Forest
 - Shrub/Scrub
 - Grassland/Herbaceous
 - Pasture/Hay
 - Cultivated Crops
 - Woody Wetlands
 - Emergent Herbaceous Wetlands



Scale is 1:42,000 when printed at 22 x 34



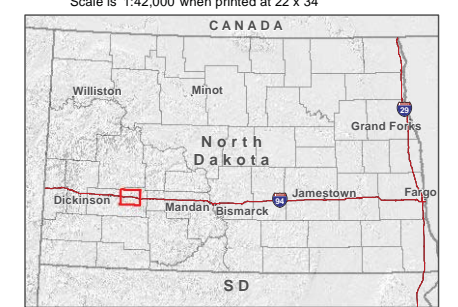
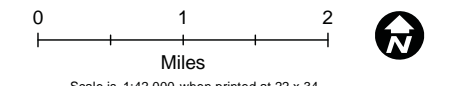
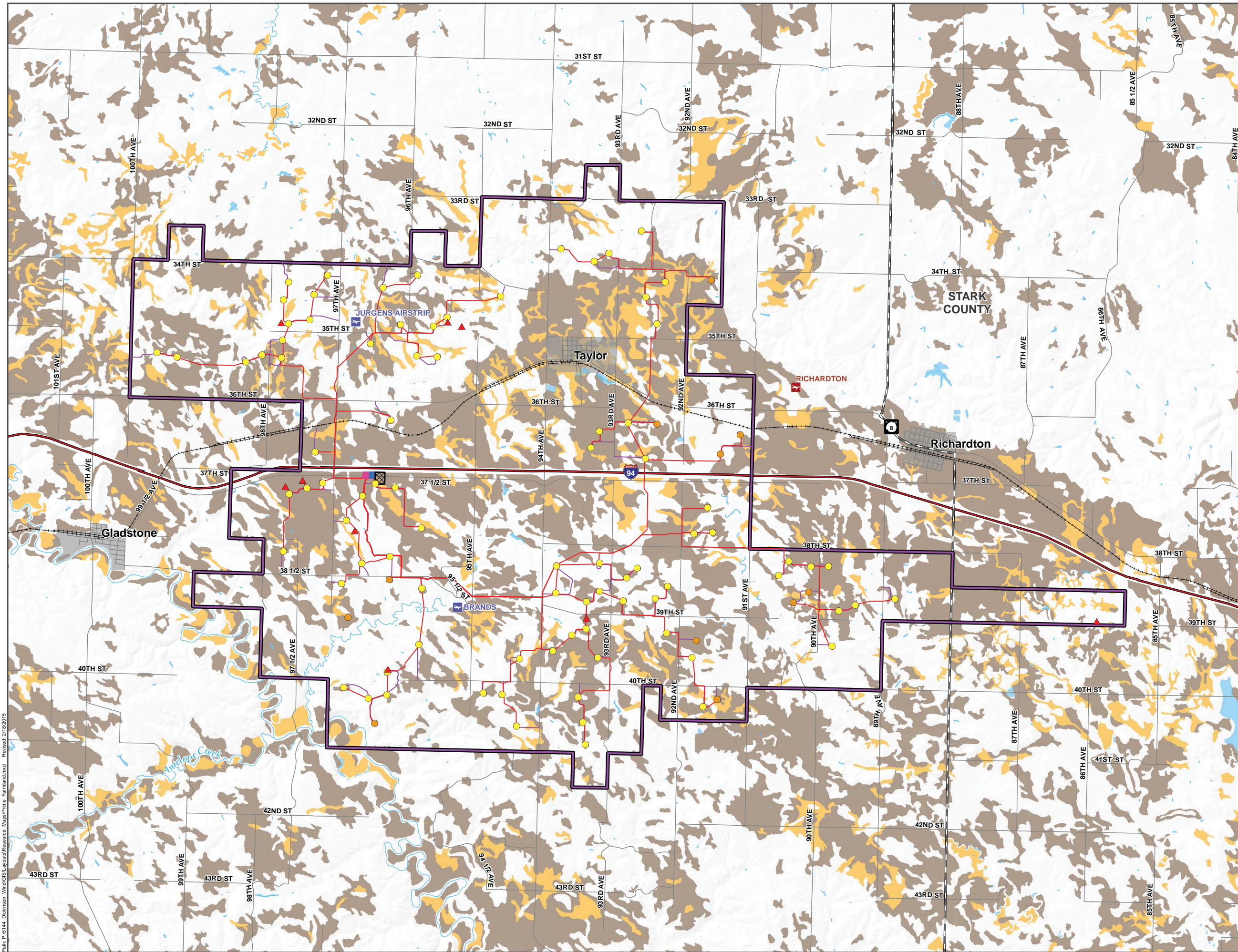
Path: P:\6144_Dickinson_Wind\GIS\Layouts\Resource_Maps\LandCover.mxd Revised: 2/16/2015

Figure 13: Land Cover map

Dickinson Wind Energy Center

Legend

- ▲ Met Tower (02/06/15)
 - Proposed Turbine (01/29/15)
 - Alternative Turbine (01/29/15)
 - Collection System (02/09/15)
 - Service Roads (02/06/15)
 - Project Boundary (11/10/14)
 - Laydown
 - O&M Building
 - Substation
- ### Transportation
- ✈ Public Airport
 - ✈ Private Airport
 - Interstate Highway
 - U.S. Highway
 - State Highway
 - Rail
 - County Road
- ### Prime Farmland
- All areas are prime farmland
 - Farmland of statewide importance



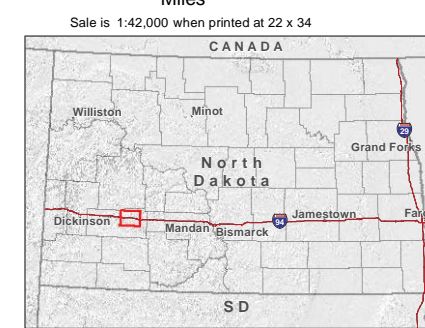
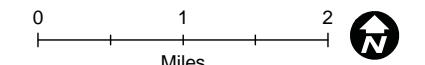
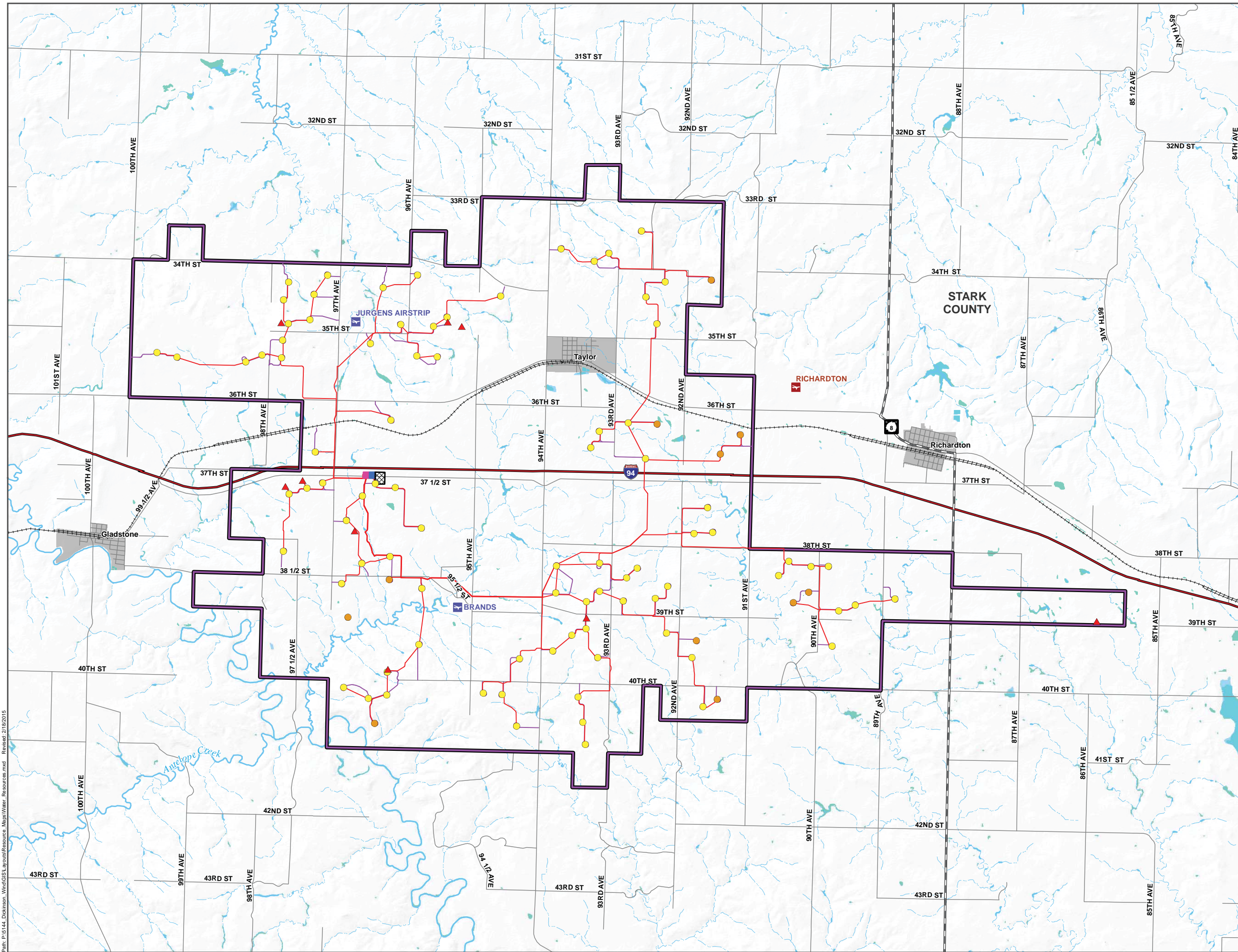
Path: P:\6144_Dickinson_Wind\GIS\Layouts\Resource_Maps\Prime_Farmland.mxd. Revised: 2/18/2015

Figure 14: Prime Farmland Soil Distribution Map

Dickinson Wind Energy Center

Legend

- ▲ Met Tower (02/06/15)
 - Proposed Turbine (01/29/15)
 - Alternative Turbine (01/29/15)
 - Collection System (02/09/15)
 - Service Roads (02/06/15)
 - Project Boundary (11/10/14)
 - Laydown
 - O&M Building
 - Substation
- ### Transportation
- ✈ Public Airport
 - ✈ Private Airport
 - Interstate Highway
 - U.S. Highway
 - State Highway
 - Rail
 - County Road
- ### Hydrology
- Perennial Stream
 - Intermittent Stream
 - NWI Wetlands



Path: P:\15144_Dickinson_Wind\GIS\Layouts\Resource_Maps\Water_Resources.mxd Revised: 2/18/2015

Figure 15: National Wetlands Inventory and Surface Waters Map