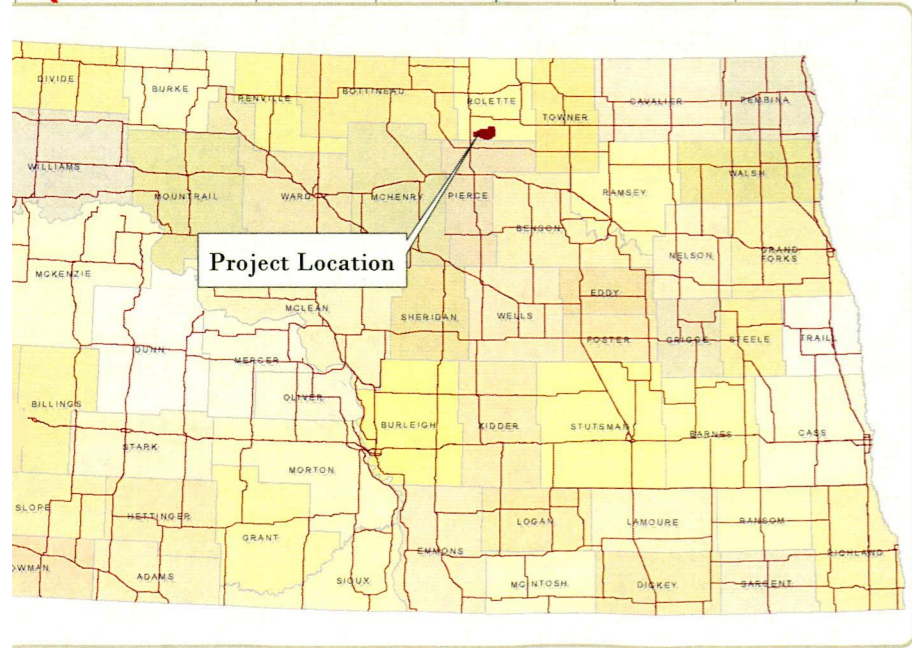
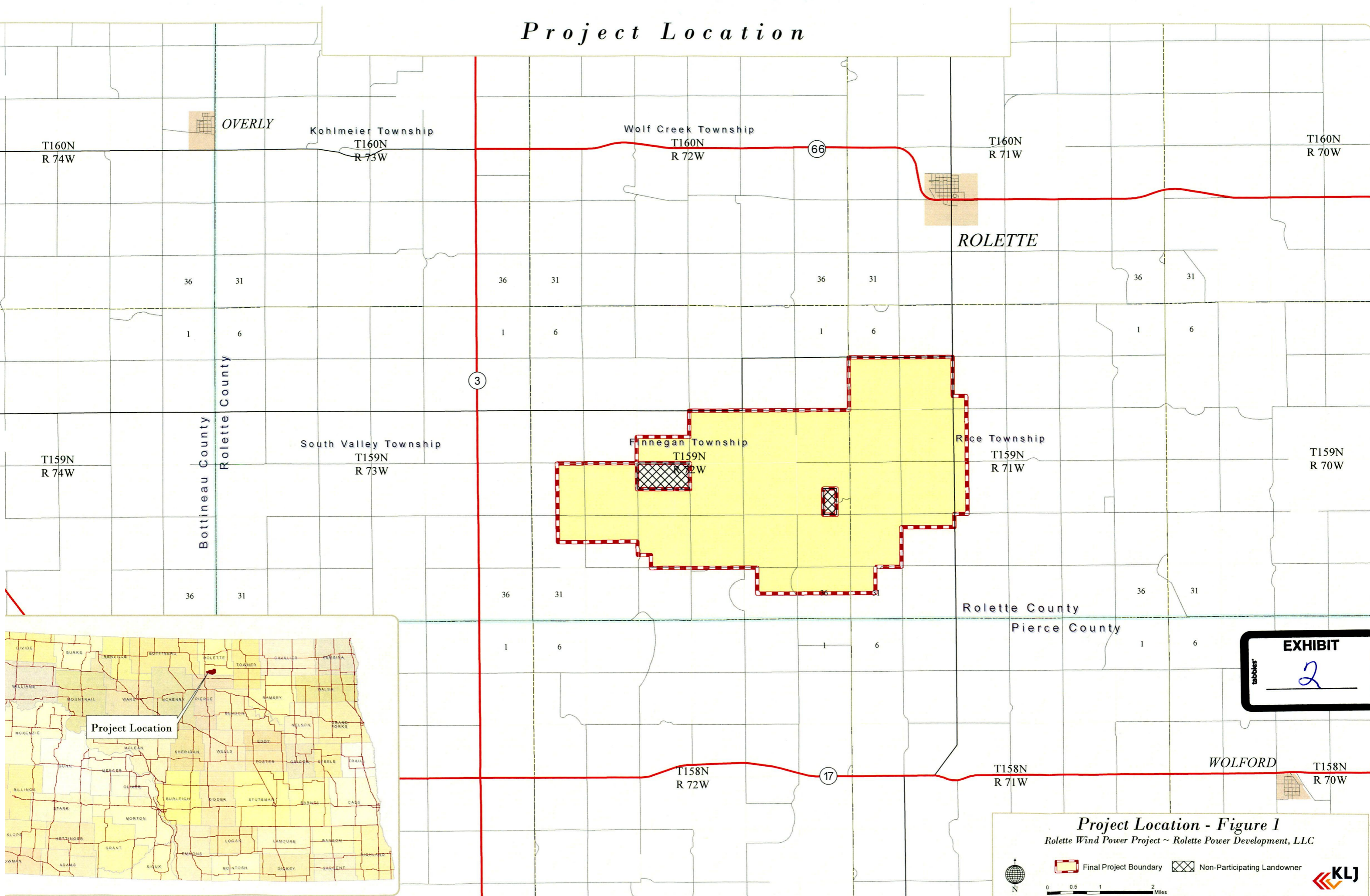


# Project Location



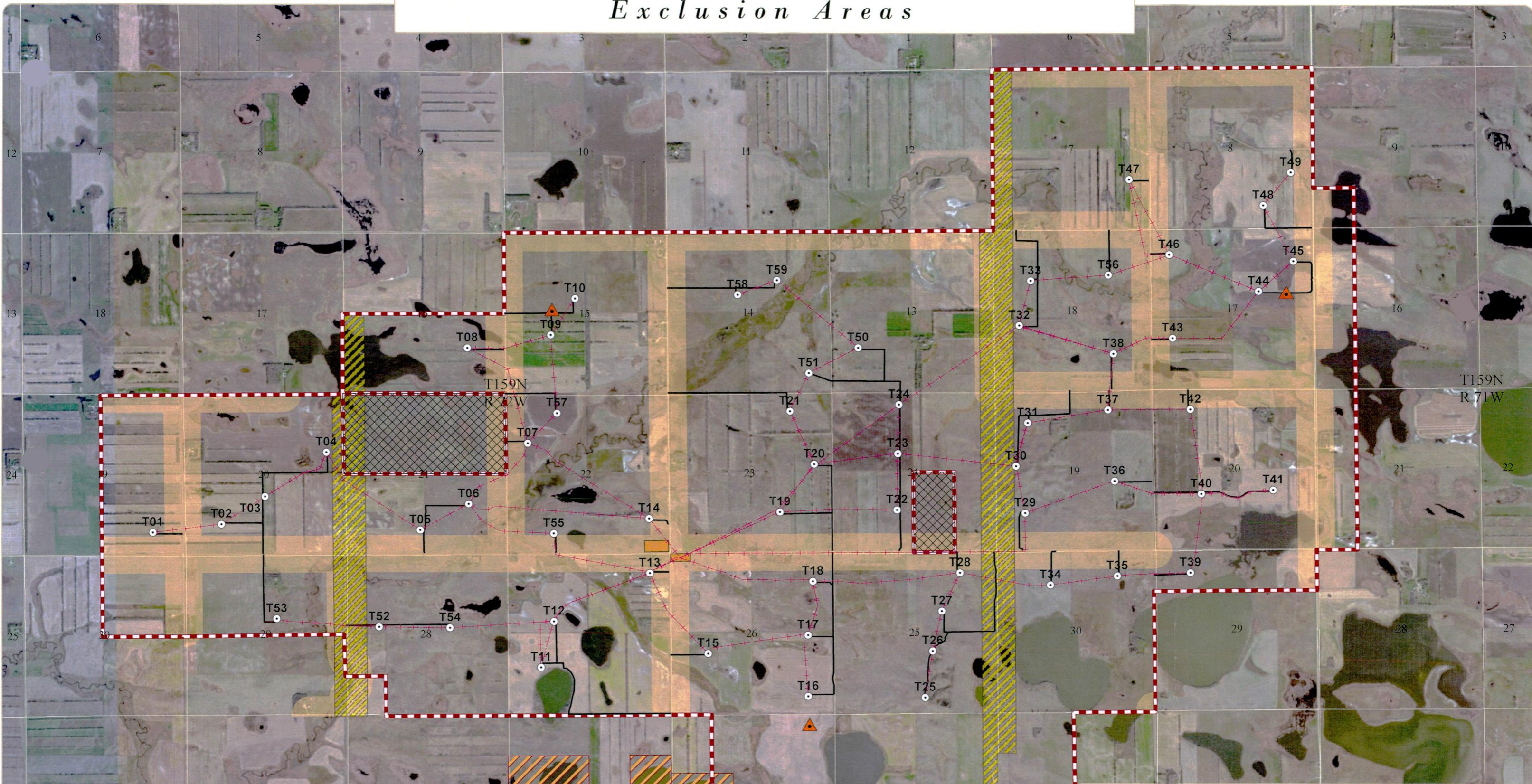
**EXHIBIT**  
2

**Project Location - Figure 1**  
 Rolette Wind Power Project ~ Rolette Power Development, LLC

Final Project Boundary    
 Non-Participating Landowner

N    
 0 0.5 1 2 Miles

# Exclusion Areas



**Exclusion Areas - Figure 2**

Rolette Wind Power Project ~ Rolette Power Development, LLC

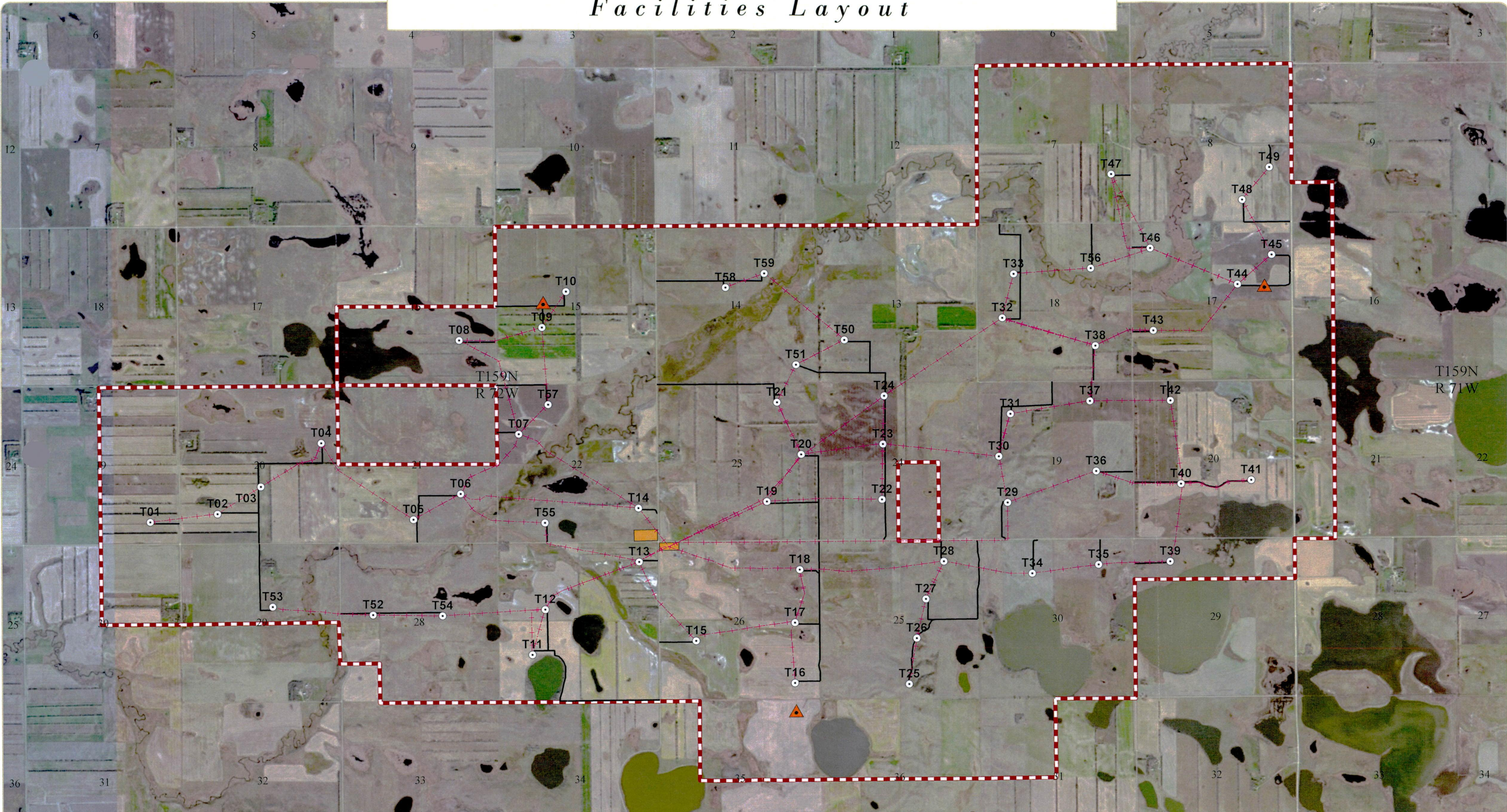
- USFWS WPA
- Electrical Transmission Line
- Non-Participating Landowner
- Roadway Setbacks
- Turbine Layout
- Turbine Collector Lines
- Permanent Met Towers
- Access Roads
- O & M and Substation
- Final Project Boundary

0 0.25 0.5 1 Miles












# Facilities Layout




**Facilities Layout - Figure 4**

Rolette Wind Power Project ~ Rolette Power Development, LLC

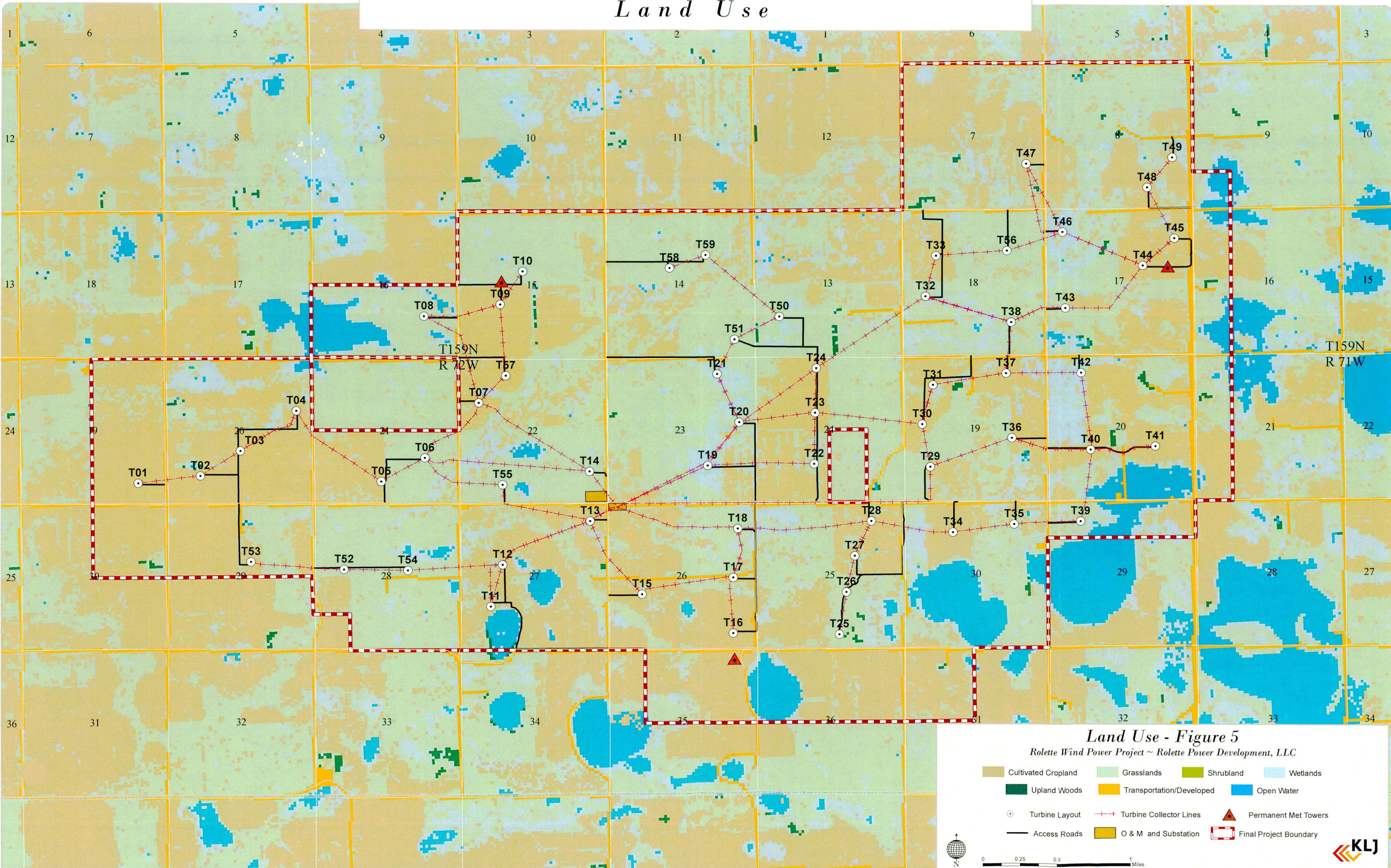
 Turbine Layout	 Turbine Collector Lines	 Permanent Met Towers
 Access Roads	 O & M and Substation	 Final Project Boundary

 N

0 0.25 0.5 1 Miles



# Land Use



**Land Use - Figure 5**

Rolette Wind Power Project ~ Rolette Power Development, LLC

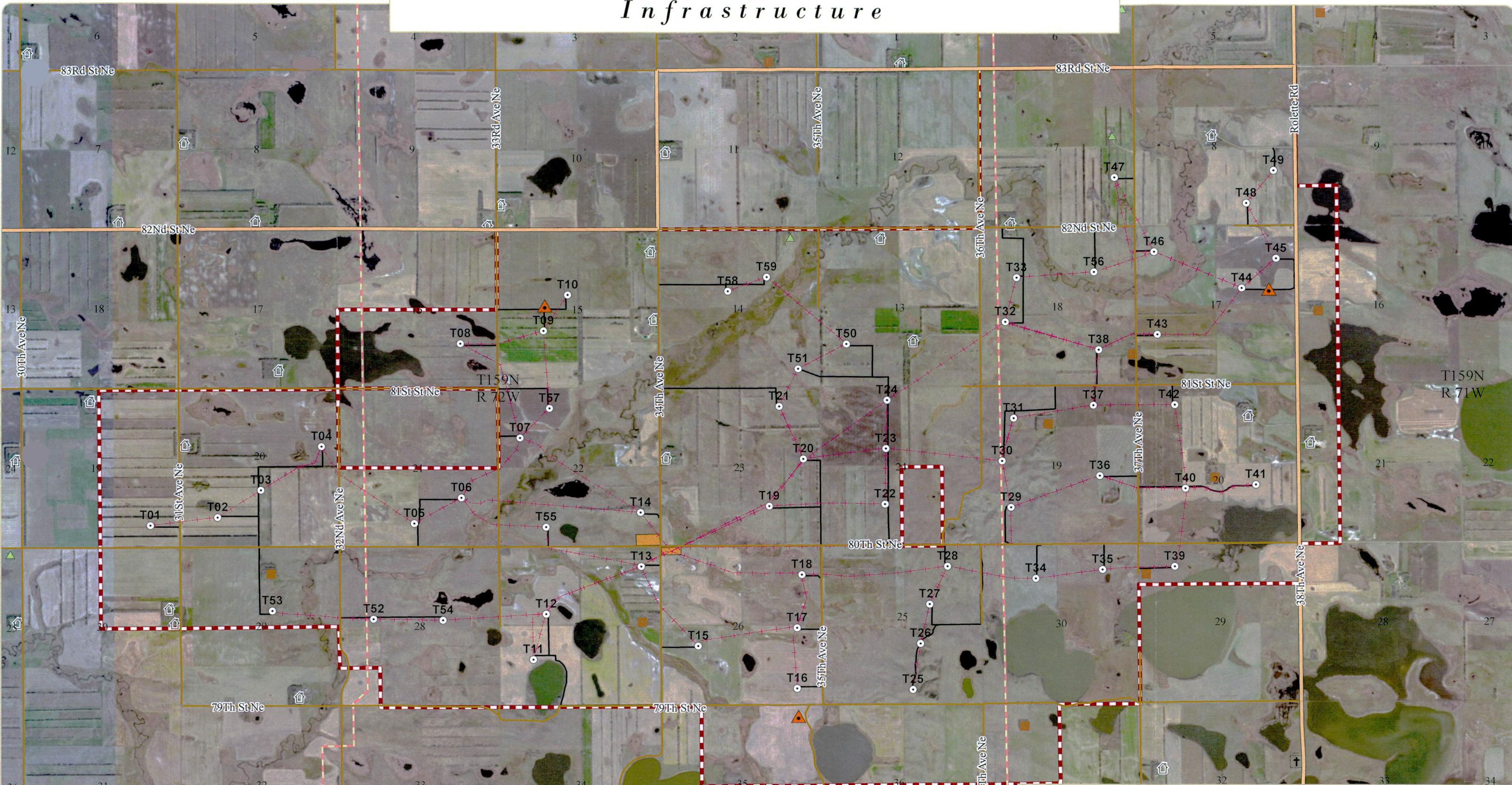
- Cultivated Cropland
- Grasslands
- Shrubland
- Wetlands
- Upland Woods
- Transportation/Developed
- Open Water
- Turbine Layout
- Turbine Collector Lines
- Permanent Met Towers
- Access Roads
- O & M and Substation
- Final Project Boundary



0 0.25 0.5 1 Miles

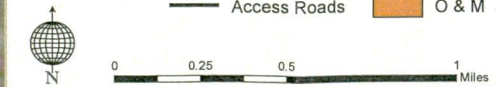


# Infrastructure

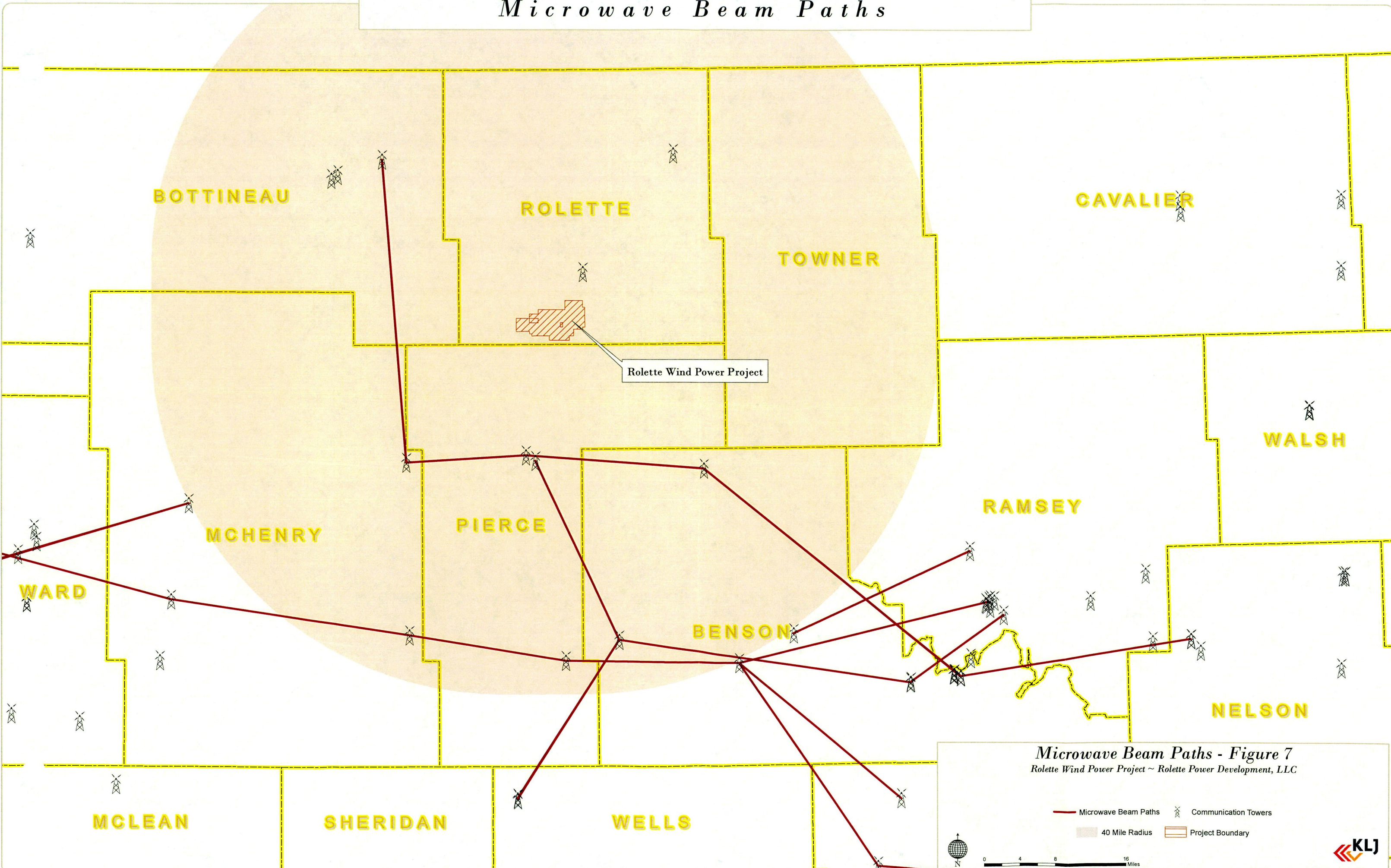


**Infrastructure - Figure 6**  
Rolette Wind Power Project ~ Rolette Power Development, LLC

- Farm Site
- Residence
- Unoccupied Structure
- Cemetery
- Local Roads
- County Roads
- Electrical Transmission Lines
- Turbine Layout
- Turbine Collector Lines
- Permanent Met Towers
- Access Roads
- O & M and Substation
- Final Project Boundary



# Microwave Beam Paths



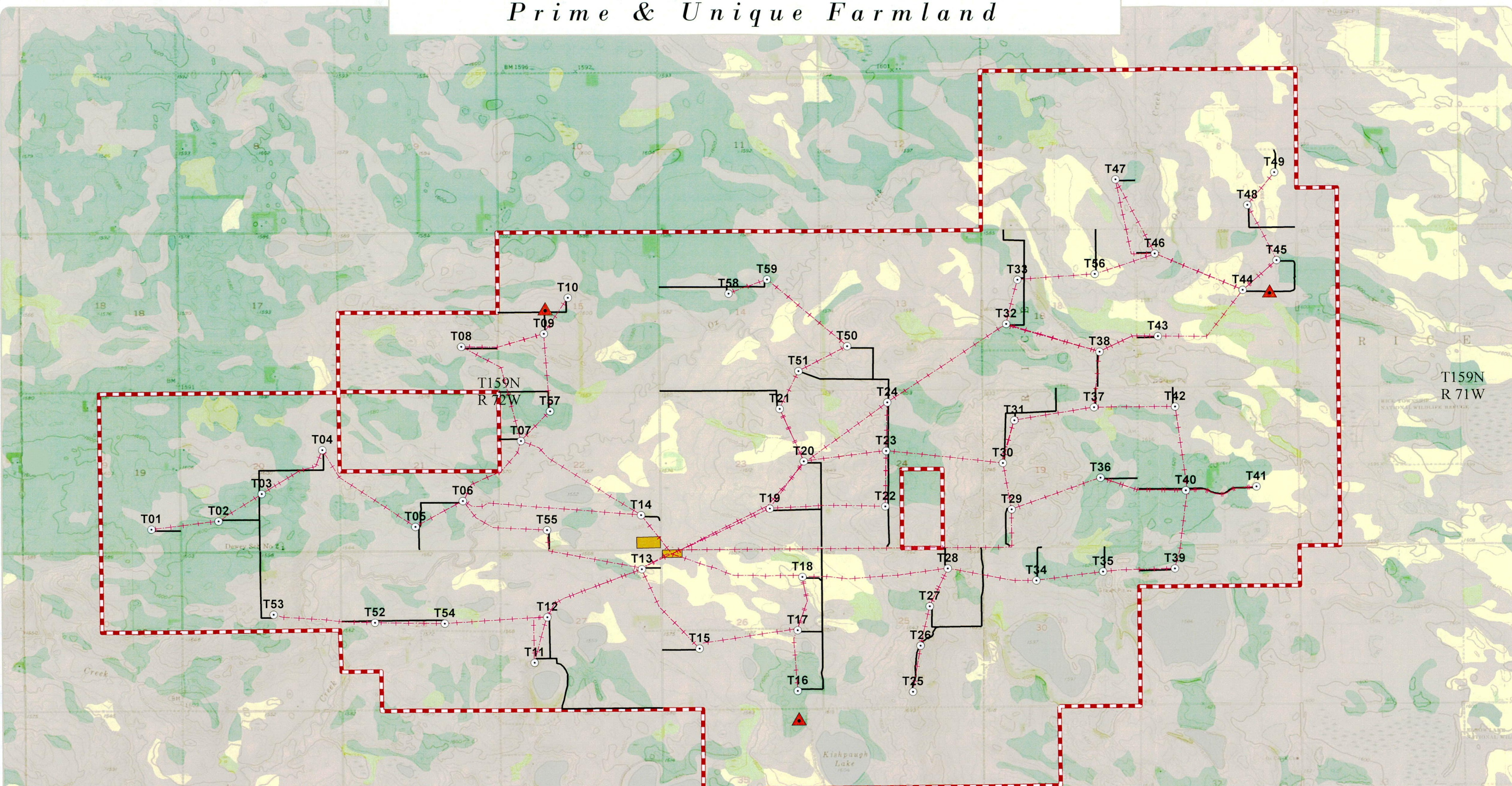
*Microwave Beam Paths - Figure 7*  
Rolette Wind Power Project ~ Rolette Power Development, LLC

— Microwave Beam Paths    ⚡ Communication Towers  
○ 40 Mile Radius    ▨ Project Boundary

0 4 8 16 Miles

**KLJ**

# Prime & Unique Farmland

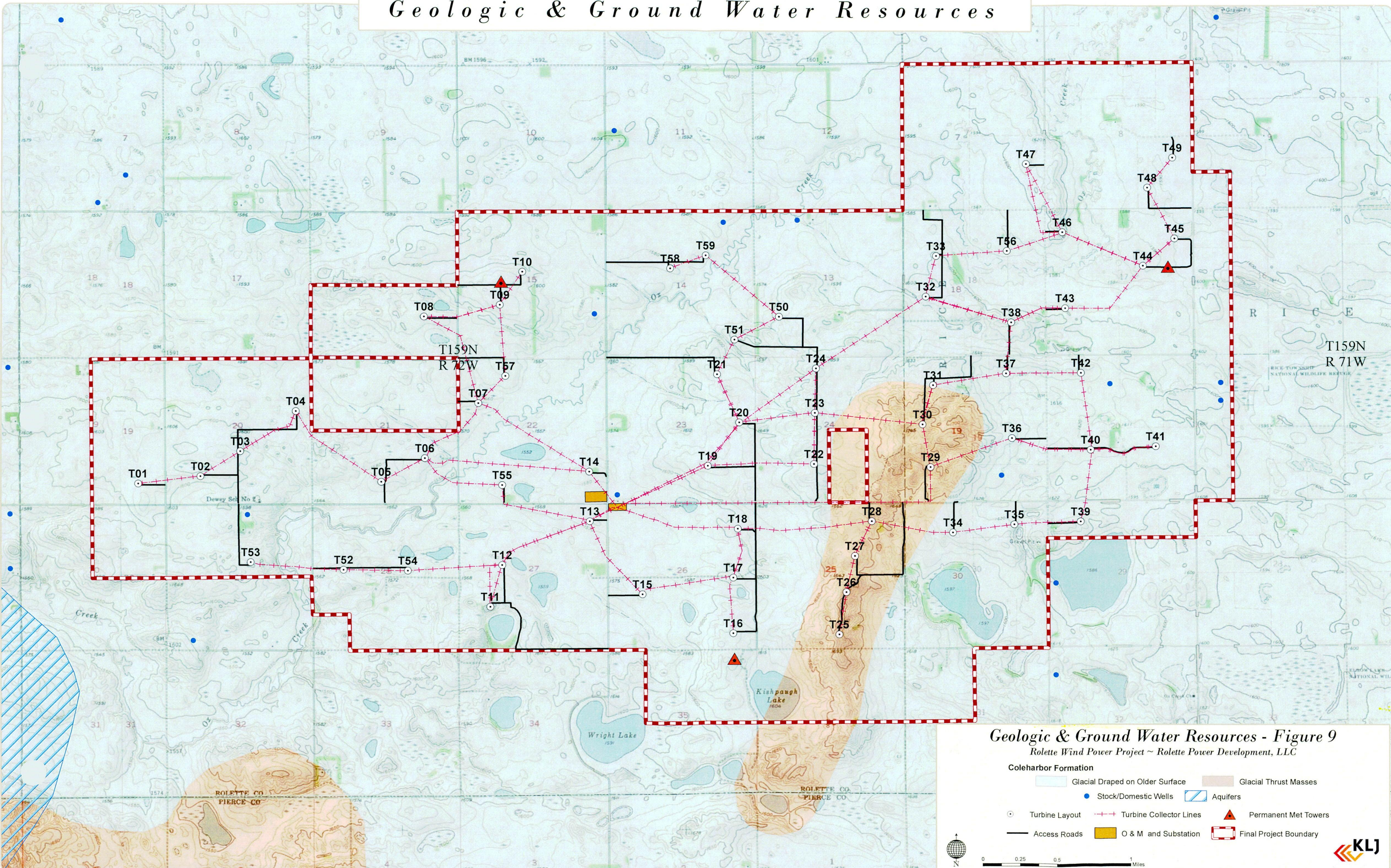


**Prime & Unique Farmland - Figure 8**  
 Rolette Wind Power Project ~ Rolette Power Development, LLC

- Prime Farmland
- Farmland of Statewide Importance
- Prime Farmland If Drained
- Not Prime Farmland
- Turbine Layout
- Turbine Collector Lines
- Access Roads
- O & M and Substation
- Final Project Boundary
- Permanent Met Towers

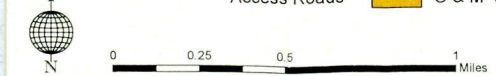


# Geologic & Ground Water Resources

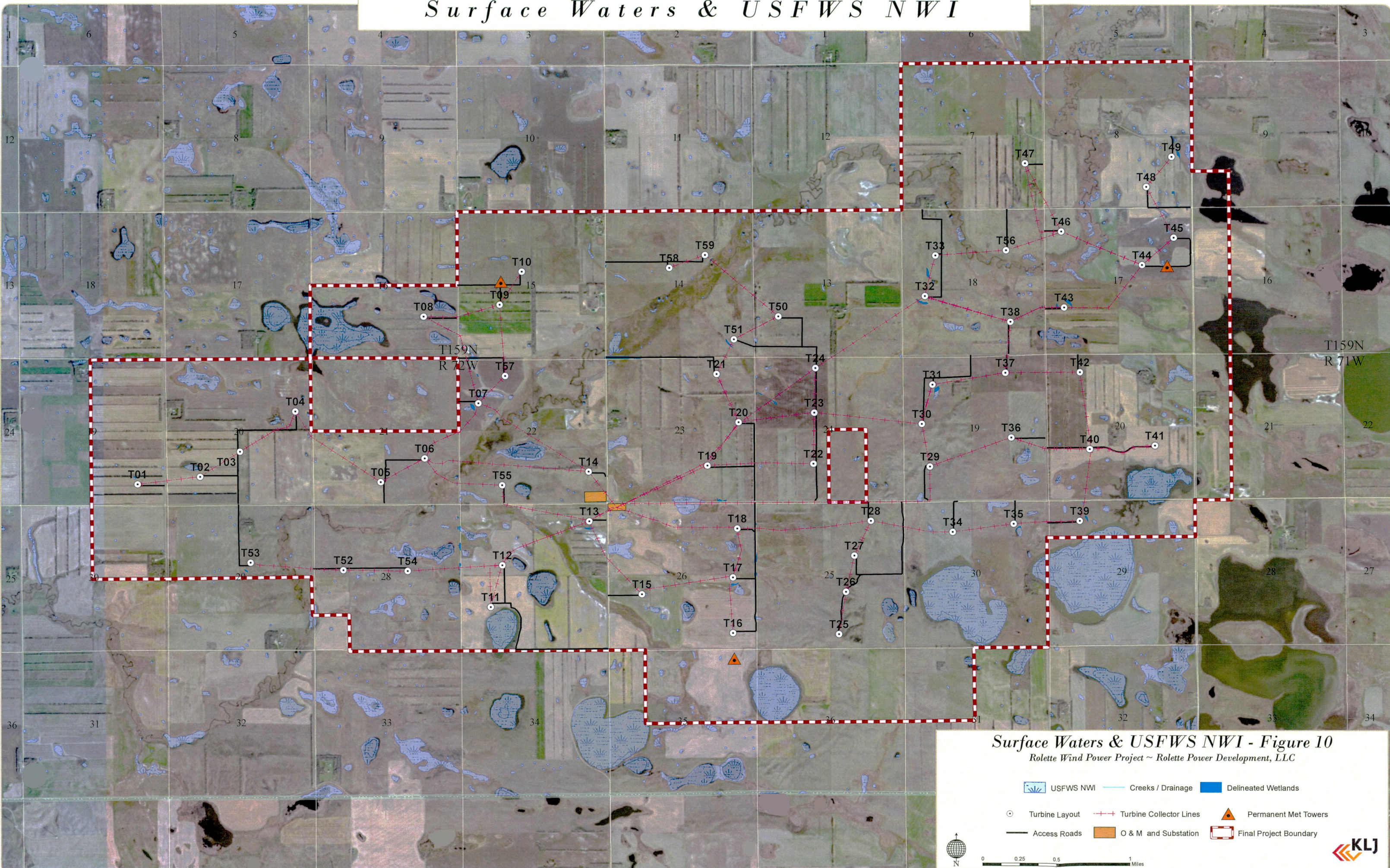


**Geologic & Ground Water Resources - Figure 9**  
 Rolette Wind Power Project ~ Rolette Power Development, LLC

- Coleharbor Formation**
- Glacial Draped on Older Surface
  - Glacial Thrust Masses
  - Stock/Domestic Wells
  - Aquifers
  - Turbine Layout
  - Turbine Collector Lines
  - Permanent Met Towers
  - Access Roads
  - O & M and Substation
  - Final Project Boundary



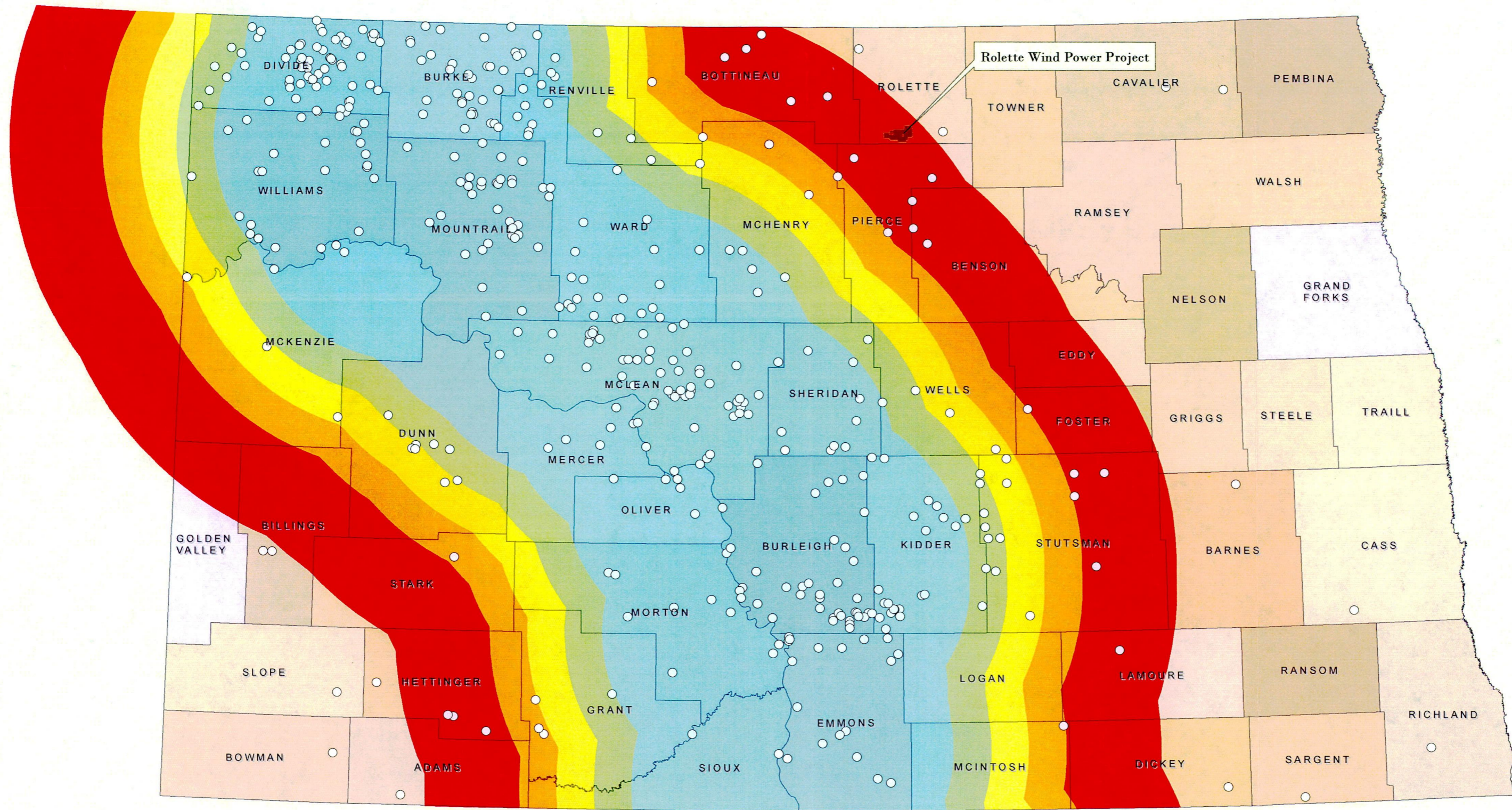
# Surface Waters & USFWS NWI



**Surface Waters & USFWS NWI - Figure 10**  
 Rolette Wind Power Project ~ Rolette Power Development, LLC

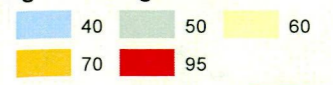
	USFWS NWI		Creeks / Drainage		Delineated Wetlands
	Turbine Layout		Turbine Collector Lines		Permanent Met Towers
	Access Roads		O & M and Substation		Final Project Boundary

# Whooping Crane Migration Corridor



*Whooping Crane Migration Corridor - Figure 11*  
 Rolette Wind Power Project ~ Rolette Power Development, LLC

**Whooping Crane Migration**



 Confirmed Whooping Crane Sightings  Rolette Wind Power Project Area

