

# ***CULTURAL RESOURCES***

## **ROLETTE WIND POWER PROJECT: A CLASS III CULTURAL RESOURCE INVENTORY IN ROLETTE COUNTY, NORTH DAKOTA**

**Prepared For:**  
Rolette Power Development, LLC  
Finley, North Dakota

**Principal Investigator:**  
Timothy Dodson

**Prepared By:**  
Matthew Hull, Corey Yates and  
Timothy Dodson

**KLJ**  
4585 Coleman Street  
Bismarck, North Dakota 58503

**REPORT OF INVESTIGATION: 2137**

**JUNE 2015**



35 PU-15-124 Filed 06/29/2015 Pages: 81  
Exhibit 8  
Rolette Power Development, LLC

# MANUSCRIPT DATA RECORD FORM

**1. Manuscript Number:**

**2. SHPO Reference #:**

**3. Author(s):**

Matthew Hull, Corey Yates and Timothy Dodson

**4. Title:**

Rolette Wind Power Project: A Class III Cultural Resource Inventory in Rolette County, North Dakota

**5. Report Date:**

June 2015

**6. Number of Pages:**

79

**7. Type I, T, E, O:**

I

**8. List Formally Tested or Excavated Sites (Not Probes):**

No cultural resources were formally tested or excavated.

**9. Acres:**

845

**10. Legal Location(s) with Historic Context Study Unit(s):**

<u>County</u>	<u>TWP</u>	<u>RNG</u>	<u>SEC</u>	<u>SU</u>
Rolette	T. 159 N.	R. 71 W.	7-8, 17-20, 29-30	SO
	T. 159 N.	R. 72 W.	13-16, 19-29	SO

# **ROLETTE WIND POWER PROJECT: A CLASS III CULTURAL RESOURCE INVENTORY IN ROLETTE COUNTY, NORTH DAKOTA**

**Prepared For:**

**Rolette Power Development, LLC  
Finley, North Dakota**

**Principal Investigator:**

**Timothy Dodson**

**Prepared By:**

**Matthew Hull, Corey Yates and  
Timothy Dodson**

**KLJ**

**4585 Coleman Street  
Bismarck, North Dakota 58503**

**Report of Investigation: 2137**

**June 2015**

## ABSTRACT

Rolette Power Development, LLC contracted KLJ to conduct a Class III Cultural Resource Inventory for the proposed construction of the Rolette Wind Power Project in Rolette County, North Dakota. The proposed location of the wind farm is just south of the City of Rolette and just north of the Pierce County line. The area subject to the Class III Inventory was approximately 845.51 acres.

A Literature Review identified seven previously recorded cultural resources and four previous inventories within a one-mile radius of the project area. One of the previously recorded cultural resources, a historic site lead (32ROx8) crossed into the project's area of potential effect.

The Class III Cultural Resource Inventory was conducted on June 23-26 and November 3-4, 2014 by KLJ archaeologists Matthew Hull, Sean Gordon, Corey Yates, Jennifer Allen, and Kara Allison. Additional Class III inventory and shovel probing was conducted on April 24-26 and May 18-19, 2015 by KLJ archaeologists Timothy Dodson, Sean Gordon, Corey Yates, Matthew Hull, and Jennifer Allen. During the inventories, 10 previously unrecorded cultural resources were identified within the project area. They include three historic/architectural sites, three historic sites, three prehistoric isolated finds, and one historic isolated find. No cultural material was recovered from the shovel probes.

One of the historic/architectural sites (32RO82) is *Eligible* for inclusion on the National Register of Historic Places. Another historic/architectural site (32RO81) is recommended *Not Eligible* for inclusion on the National Register of Historic Places, even though an architectural component of this site is recommended *Eligible*. The final historic/architectural site (32RO84) is *unevaluated* for inclusion on the National Register of Historic Places. All three historic sites (32RO79, 32RO80, 32RO85), three prehistoric isolated finds (32ROx114, 32ROx115, 32ROx116), and one historic isolated find (32ROx113) are recommended *Not Eligible* for inclusion on the National Register of Historic Places.

Provided all work and ground disturbance stays within the inventoried area, and avoids the *Eligible* and *unevaluated* cultural resources/components, KLJ recommends a finding of *No Significant Sites Affected* for the proposed project as inventoried, mapped, photographed, and described herein.



## TABLE OF CONTENTS

Abstract .....	ii
Introduction.....	1
Environmental Setting .....	5
Geographic Formation and Topography .....	5
Cultural History .....	6
Flora .....	7
Fauna.....	7
Natural Resources .....	7
Geology and Soils .....	8
Land Use.....	8
Climate .....	8
Research Goals/Evaluation of Research .....	9
Literature Review .....	10
Field Methods/Conditions .....	11
Shovel Probing .....	11
Results .....	16
Previously Recorded Cultural Resource .....	16
32ROx8.....	16
Newly Recorded Cultural Resources .....	17
32RO79.....	17
32RO80.....	23
32RO81.....	27
32RO82.....	36
32RO84.....	47
32RO85.....	53
32ROx113 .....	57
32ROx114.....	59
32ROx115 .....	60
32ROx116 .....	62
Summary and Management Recommendations.....	64
References Cited .....	66
Appendix A: Project Area Photographs .....	67
Appendix B: Literature And File search Results.....	70

### **TABLE OF TABLES**

Table 1: Legal Location of Proposed Project in Rolette County .....	1
Table 2: Results of Shovel Probing, Near Ox Creek. ....	12
Table 3: Results of Shovel Probing, North Side of Ridgeline. ....	12



Table 4: Results of Shovel Probing, South Side of Ridgeline. ....	12
Table 5: Summary of Management Recommendations.....	64
Table 6: Previously Recorded Cultural Resources within One-Mile Search Area .....	71
Table 7: Previous Inventory Manuscript List within One-Mile Search Area.....	72

**TABLE OF FIGURES**

Figure 1: County and Study Unit Map. ....	2
Figure 2: Topographic Map (1 of 2). ....	3
Figure 3: Topographic Map (2 of 2). ....	4
Figure 4: Shovel probe #2 profile, from ridge near Ox Creek, plan view. ....	14
Figure 5: Shovel probe #1 profile, from north part of prominent ridge, plan view. ....	14
Figure 6: Shovel probe #2 profile, from south part of prominent ridge, plan view. ....	15
Figure 7: Shovel probe #15 profile, from south part of prominent ridge, plan view. ....	15
Figure 8: Overview of 32ROx8 inside project area, view to the east. ....	17
Figure 9: Overview of Feature 1, view to the northeast. ....	18
Figure 10: Overview of Feature 2, view to the south.....	19
Figure 11: Overview of Feature 3, view to the north. ....	19
Figure 12: Overview of Feature 4, view to the east. ....	20
Figure 13: Overview of Feature 5, view to the east. ....	20
Figure 14: Overview of Feature 6, view to the east. ....	21
Figure 15: Overview of 32RO79, view to the west. ....	21
Figure 16: Sketch map of 32RO79. ....	22
Figure 17: Concentration of two aqua colored bottle fragments, plan view. ....	23
Figure 18: Sun colored amethyst glass and unidentified metal piece, plan view. ....	24
Figure 19: White ware fragment, plan view. ....	24
Figure 20: Reddish brown salt glazed stoneware, plan view. ....	25
Figure 21: Overview of 32RO80, view to the north.....	25
Figure 22: Sketch map of 32RO80. ....	26
Figure 23: Overview of Feature 1, outbuilding, view to the south.....	29
Figure 24: Overview of Feature 1, outbuilding, view to the east. ....	29
Figure 25: Northwest corner of Feature 2, barn, view to the southeast. ....	30
Figure 26: Southeast corner of Feature 2, barn, view to the northwest. ....	30
Figure 27: Overview of Feature 3, collapsed structure, view to the east.....	31
Figure 28: Overview of Feature 4, farmhouse foundation, view to the northeast. ....	31
Figure 29: Overview of Feature 5, poured concrete foundation, view to the north.....	32
Figure 30: Overview of Feature 6, foundation, Features 1 and 2 in background, view to the east.	32
Figure 31: Overview of Feature 7, material scatter, view to the east. ....	33
Figure 32: Overview of Feature 8, driveway, view to the south. ....	33



Figure 33: Overview of 32RO81, eastern end, view to the west.....	34
Figure 34: Sketch map of 32RO81.....	35
Figure 35: Overview of Feature 1, farmhouse, view to the northwest.....	38
Figure 36: Overview of Feature 2, bunkhouse, view to the west.....	39
Figure 37: Overview of Feature 3, privy, view to the north.....	39
Figure 38: Overview of Feature 4, barn, view to the west.....	40
Figure 39: Overview of Feature 5, barn, view to the northwest.....	40
Figure 40: Overview of Feature 6, pump house and windpump, view to the east.....	41
Figure 41: Overview of Feature 7, basin, view to the east.....	41
Figure 42: Overview of Feature 8, collapsed barn, view to the northeast.....	42
Figure 43: Overview of Feature 9, power box, view to the north.....	42
Figure 44: Overview of Feature 10, depression, view to the northeast.....	43
Figure 45: Overview of Feature 11, material scatter, plan view.....	43
Figure 46: Overview of Feature 12, roadbed, view to the southeast.....	44
Figure 47: Overview of Feature 13, combine, view to the southeast.....	44
Figure 48: Overview of 32RO82, view to the north.....	45
Figure 49: Sketch map of 32RO82.....	46
Figure 50: Overview of Feature 1, windpump, view to the west.....	48
Figure 51: Overview of Feature 2, depression, view to the north.....	48
Figure 52: Feature 2, possible cast iron stove piece, plan view.....	49
Figure 53: Overview of Feature 3, foundation, view to the east.....	49
Figure 54: Wooden beam from Feature 4, plan view.....	50
Figure 55: Metal farm implement from Feature 4, plan view.....	50
Figure 56: Overview of 32RO84, from northwest corner, view to the southeast.....	51
Figure 57: Overview of 32RO84, view to the east.....	51
Figure 58: Sketch map of 32RO84.....	52
Figure 59: Decorative glass base, plan view.....	53
Figure 60: Ceramic insulator, plan view.....	54
Figure 61: Metal horseshoe, plan view.....	54
Figure 62: Piece of masonry, plan view.....	55
Figure 63: Overview of 32RO85, pin flags at artifacts, view to the north.....	55
Figure 64: Sketch map of 32RO85.....	56
Figure 65: View of glass container base showing maker's mark, plan view.....	57
Figure 66: Side view of glass container base and bottom, plan view.....	58
Figure 67: Overview of 32ROx113, view to the west.....	58
Figure 68: Close-up of Besant projectile point, dorsal surface.....	59
Figure 69: Overview of 32ROx114, view to the north.....	60
Figure 70: Close-up of utilized KRF flake, dorsal surface.....	61



Figure 71: Overview from 32ROx115, view to the north. ....61

Figure 72: KRF secondary flake, ventral surface.....62

Figure 73: Swan River chert biface fragment, plan view. ....63

Figure 74: Overview of 32ROx116, vest at artifacts, view to the west. ....63

Figure 75: Overview of access road and turbine pad in southwest part of project area, view to the west.  
.....68

Figure 76: Overview of connector line in middle of project area, view to the south.....68

Figure 77: Overview of access road and turbine pad in northeast part of project area, view to the north.  
.....69

Figure 78: Overview from turbine pad in east end of project area, view to the south.....69



## INTRODUCTION

KLJ was contracted by Rolette Power Development, LLC (Rolette Power) to conduct a Class III Cultural Resource Inventory for the proposed Rolette Wind Power Project (Table 1, Figures 1 and 2). The proposed project's area of potential effect (APE) consists of a series of turbine pads, access roads, feeder lines, and substations located just south of Rolette, North Dakota. The proposed project location encompasses parts of Sections 7-8, 17-20, and 29-30 of T. 159 N., R. 71W. and Sections 13-16, 19-29 of T. 159 N., R. 72 W., as depicted on the Rolette SW (1955) USGS 7.5" Quadrangle Map.

The Class III inventory was conducted on June 23-26, November 3-4, 2014 and April 24-26 and May 18-19, 2015 by KLJ archaeologists Timothy Dodson, Matthew Hull, Corey Yates, Sean Gordon, Jennifer Allen, and Kara Allison. A total of 845 acres were inventoried according to Class III standards, with extra attention given to areas of high potential for cultural resources. Shovel probes were placed in high probability areas with low ground surface visibility (GSV).

Ten previously unrecorded cultural resources were encountered during the inventory. They consist of three historic/architectural sites, three historic sites, three prehistoric isolated finds, and one historic isolated find. In addition, one previously recorded cultural resource, historic site lead 32ROx8, was located inside the APE. These findings are discussed in detail in the **Results** and **Summary and Management Recommendations** sections of this document.

All site forms, illustrations, maps, field notes, and photographic records relevant to the undertaking are on file at the KLJ office in Bismarck, North Dakota.

**Table 1:** Legal Location of Proposed Project in Rolette County

Township	Range	Section
T. 159 N	R. 71 W	7-8, 17-20, 29-30
T. 159 N	R. 72 W	13-16, 19-29



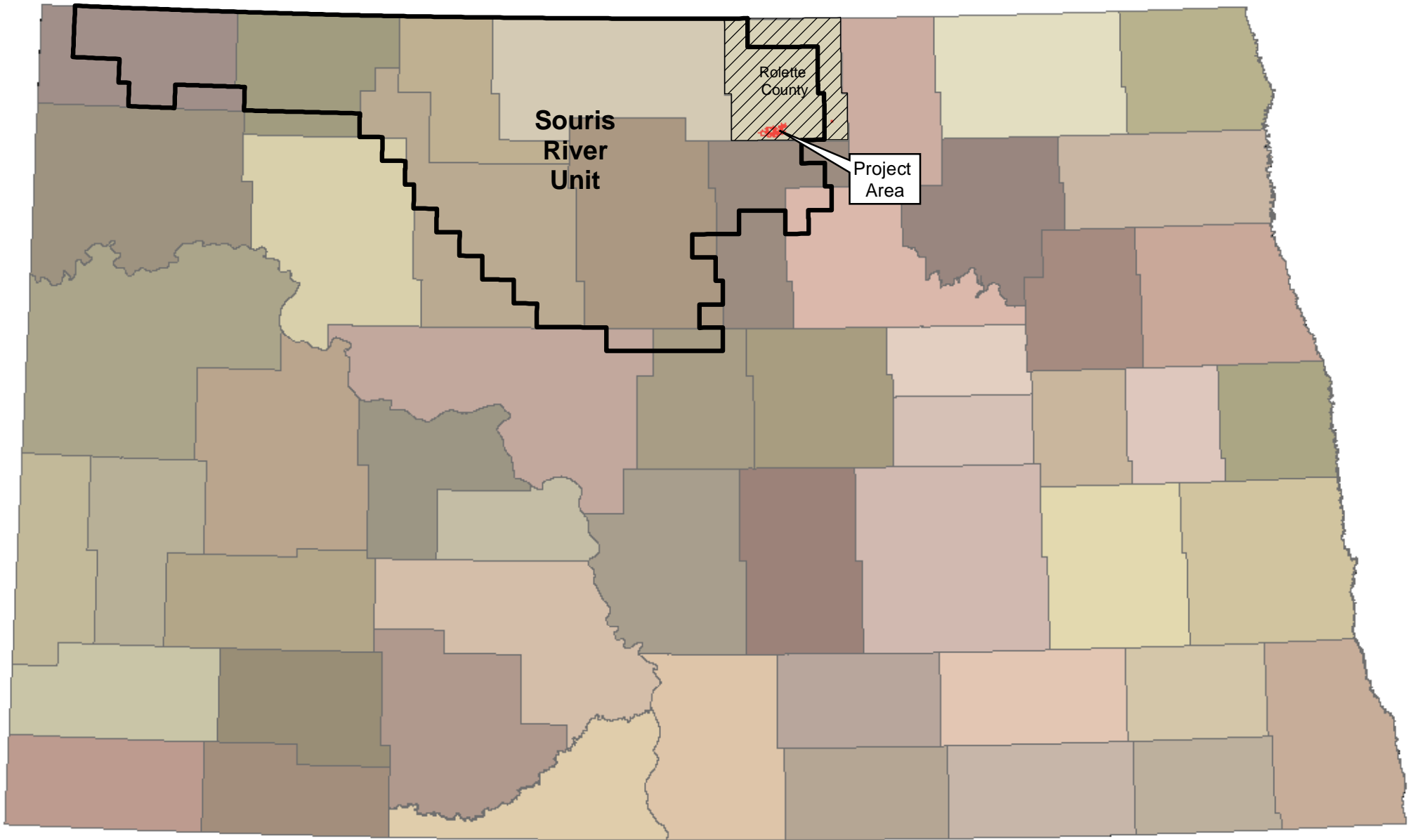


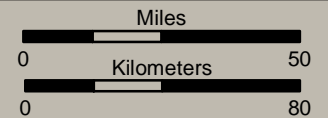
Figure 1



# Rolette Wind Farm Survey

## Rolette County, North Dakota Project Area

### ND County and Archaeological Study Unit Location Map

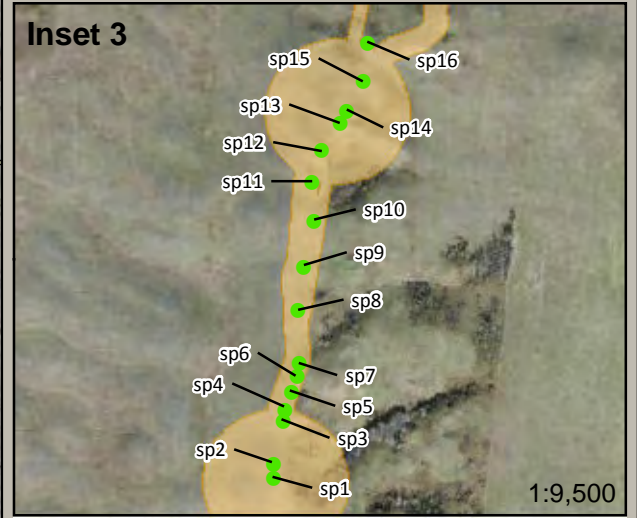
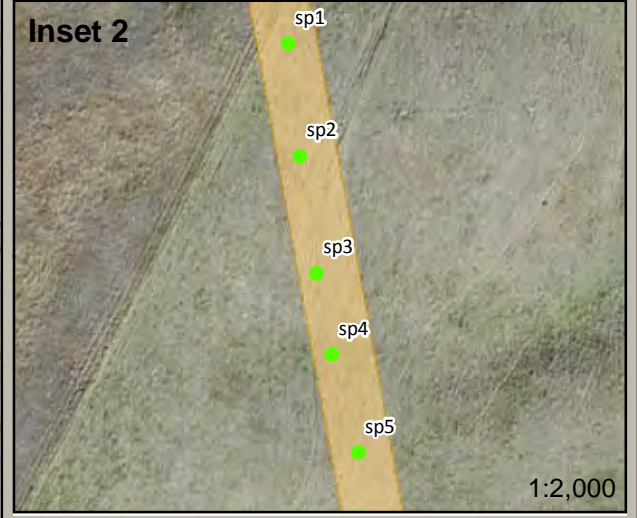
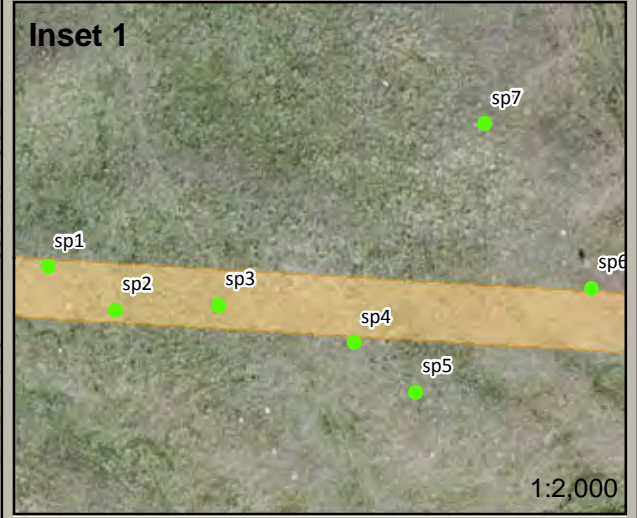
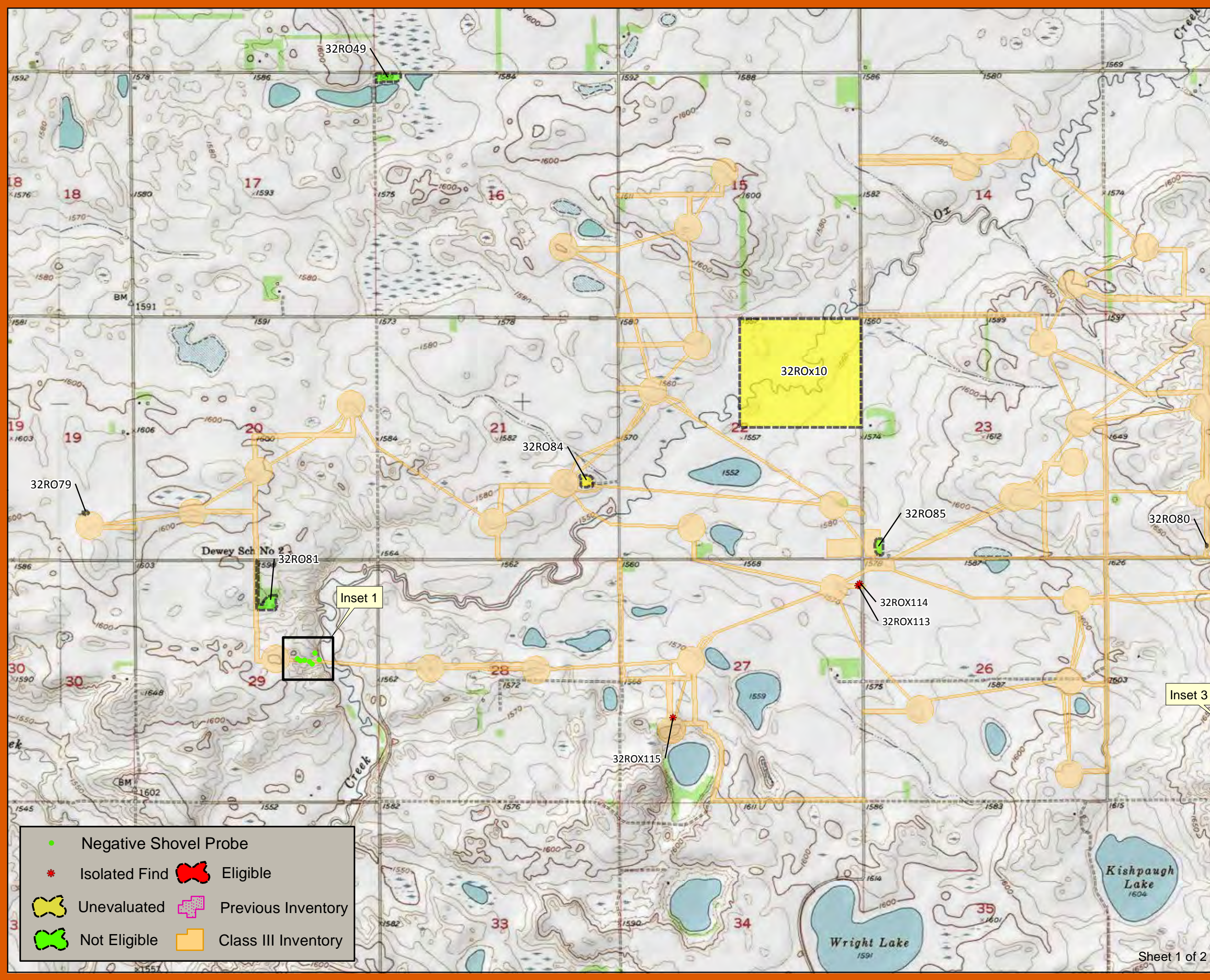


 Project Area

Map Scale: 1:2,200,000



Figure 2  
 Rolette Wind Farm Survey  
 Rolette County,  
 North Dakota  
 Topographic Map



- Negative Shovel Probe
- \* Isolated Find
- ✂ Eligible
- ✂ Unevaluated
- ✂ Not Eligible
- + Previous Inventory
- + Class III Inventory

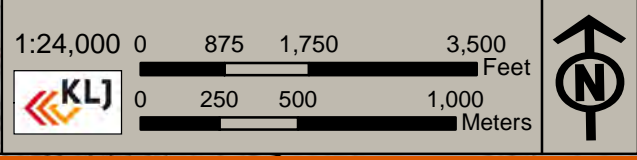
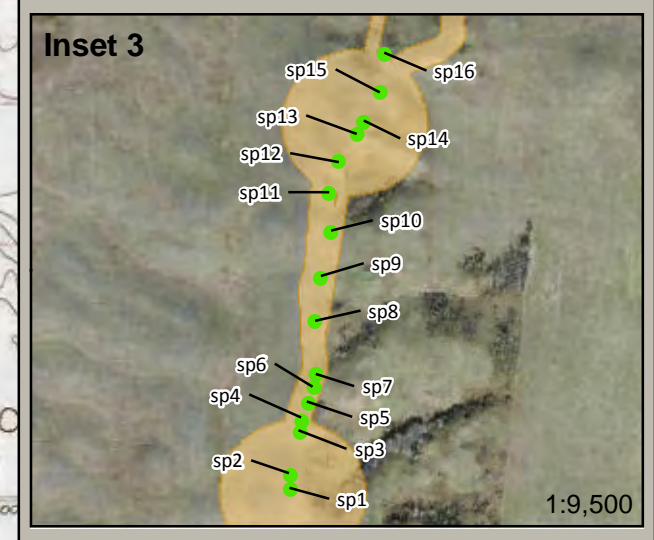
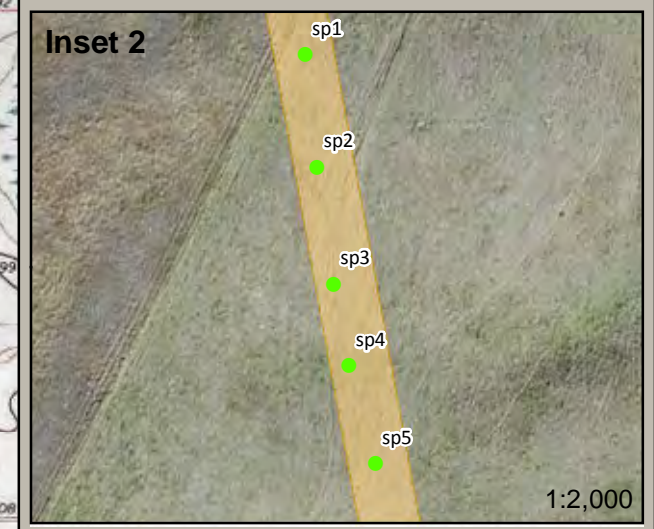
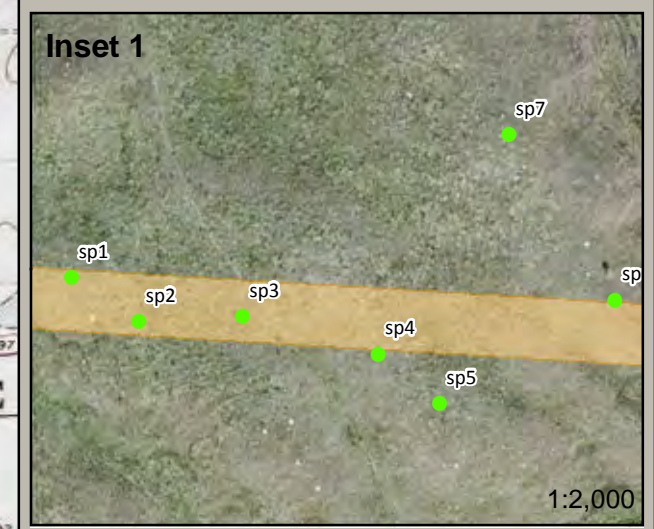
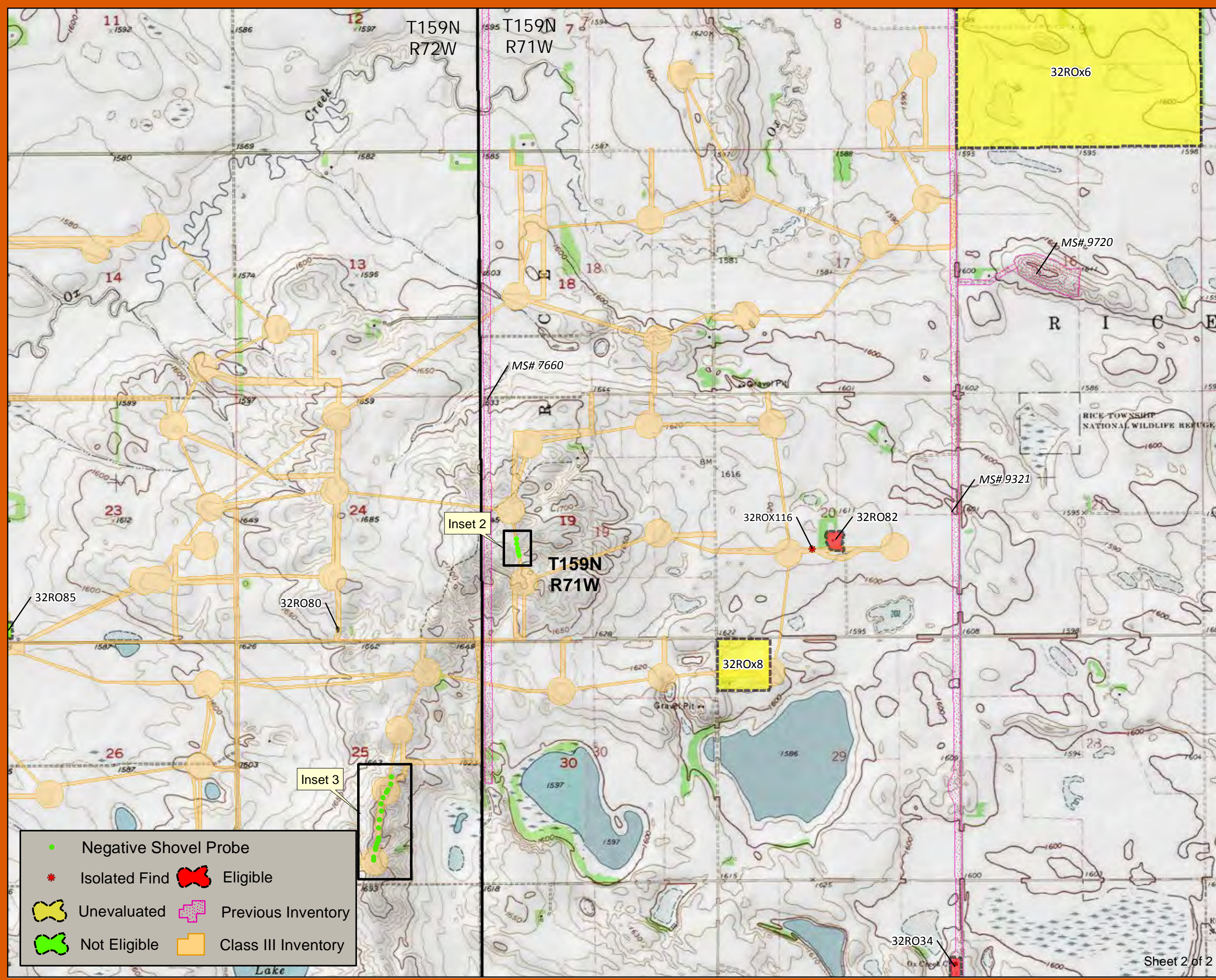


Figure 3  
 Rolette Wind Farm Survey  
 Rolette County,  
 North Dakota  
 Topographic Map



- Negative Shovel Probe
- ★ Isolated Find
- ✖ Eligible
- Unevaluated
- Previous Inventory
- Not Eligible
- Class III Inventory

1:24,000

0 875 1,750 3,500 Feet  
 0 250 500 1,000 Meters

**KLJ**

## ENVIRONMENTAL SETTING

The project area is located in north central North Dakota, south of the City of Rolette, and lies within the Souris River Study Unit (SOSU). The Sheyenne River and Northern Red River study units lie to the east, the Garrison and Southern Missouri study units to the south, and the Canadian Provinces of Saskatchewan and Manitoba border to the north. It covers approximately 9,118 mi<sup>2</sup> and includes all or parts of Benson, Bottineau, Burke, Divide, McHenry, McLean, Mountrail, Pierce, Renville, Rolette, Sheridan, and Ward counties. It is described in the 2008 State Historical Society of North Dakota (SHSND) documents *North Dakota Comprehensive Plan for Historic Preservation: Archaeological Component* and *The Souris River Study Unit*, which provide a generalized overview for the following summary of the physiography and previous research in the SOSU.

### Geographic Formation and Topography

The SOSU is almost exclusively in the Northern Glaciated Plains ecoregion, which is a flat to gently rolling landscape with a high concentration of wetlands. The SOSU is primarily in the Northern Black Prairie, Glacial Lake Deltas, and Northern Dark Brown Prairie sub-ecoregions, but parts are in the Glacial Lake Basins, Drift Plains, Turtle Mountains, and End Moraine Complex sub-ecoregions. The Northern Black Prairie generally has a flat topography, with intermittent undulations, and a high concentration of wetlands. The Glacial Lake Deltas in the SOSU were created by sediment deposits from rivers entering proglacial Lake Souris. The Northern Dark Brown Prairie has a generally flat topography with intermittent undulations and a high concentration of wetlands. The Glacial Lake Basins in the SOSU were created by the proglacial action of Lake Souris. The Drift Plains are a flat landscape with occasional undulations created by retreating Wisconsinian glaciers. The Turtle Mountains are an elevated, hummocky terrain with a high concentration of wetlands and lakes. The End Moraine Complex is a hummocky terrain full of glacial features such as moraines, eskers, kames, and thrust ridges (Bryce et al. 1998).

A narrow strip along the southwestern edge of the SOSU extends into the Northwestern Glaciated Plains ecoregion. The Northwestern Glaciated Plains ecoregion is a morainal landscape with heavy surface irregularities that mark the westernmost extent of continental glaciation. Most of this part of the study unit is in the Northern Missouri Coteau sub-ecoregion, with very small parts in the Missouri Coteau, Collapsed Glacial Outwash, and Missouri Coteau Slope sub-ecoregions. The Northern Missouri Coteau can be defined as a hummocky, rolling landscape with poor drainage that is in a transition zone between the more boreal north and the more arid west. The Missouri Coteau is a potholed, hummocky terrain full of wetland depressions that were created when the Wisconsinian glacier stalled on the Missouri escarpment. The Collapsed Glacial Outwash has a high concentration of lakes and wetlands and was formed from glacial meltwater deposits. The Missouri Coteau Slope is where the Missouri



Coteau descends to the Missouri River. It has gently rolling topography and a simple drainage system (Bryce et al. 1998).

## Cultural History

The Paleo-Indian Period (9500 – 5500 B.C.) consists of the first people who migrated and settled in North America. This period is characterized by a hunter-gatherer lifeway, especially the exploitation of extinct Mega Fauna of the Pleistocene, which included mammoths, camels, and later, ancient bison (*Bison antiquus*). The period is also characterized by geographically extensive interactive social networks.

The Archaic Period (5500 – 500 B.C.) is divided into three sub-periods, Early Archaic, Middle Archaic, and Late Archaic. This period is characterized by the regionalization of projectile point styles, a decrease in lithic tool production quality, and a decline in the range and scale of interactions between different human populations, though this latter point might not be as applicable to the SOSU. In the SOSU, habitation levels fluctuated greatly based on climatic conditions, potentially becoming uninhabitable during the more xeric times.

The Woodland Period (550 B.C. – 1100 C.E.) is also divided into three sub-periods, Early Woodland, Middle Woodland, and Late Woodland. There is a lack of sufficient excavations with datable Woodland Period material in the SOSU, however broad inferences can be made. This period is characterized by the development of mound burial mortuary ceremonialism, production of ceramic vessels, the development of the bow and arrow, and intensified usage of seedy and grassy plants. Things changed through this period, with the level of regional interaction continuing to increase, and by the Late Woodland, the lifeway had changed to hunter-gatherer-gardener.

The Plains Village Period (1200 – 1780 C.E.) is characterized by the domination of a horticultural-hunter-gatherer lifeway within North Dakota. During this period, people were able to produce dependable, storable food surpluses that led to more permanently situated earth lodge villages. However, no earth lodge villages have yet been identified in the SOSU from this period. At the end of this period, European diseases started to decimate the local populations.

The Equestrian/Fur Trade Period (1780 – 1880 C.E.) is when the horse became instrumental in the area. After the Native population had been devastated by European diseases, horse riding and pedestrian nomads became ascendant. The nomads focused almost entirely on bison for subsistence, but also exchanged for garden produce from Villagers. This period also marks the point where metal tools and implements began replacing traditional materials in earnest, as well as the gun becoming as important as the bow and arrow when it came to weaponry. During this period, the SOSU had many trails cutting across it, connecting the Missouri River to the south and the Assiniboine River to the north. However



by the late 1800's, harassment by US cavalry and significant reduction in bison herds began curtailing the native populations.

## Flora

In the SOSU four distinct biomes are present: medium-to-tall prairie grassland, oak savanna and grassland, aspen parkland, and northern floodplain forest. The prairie grasslands are dominated by needlegrass (*Stipa viridula*), slender wheatgrass (*Elymus trachycaulus*), needle-and-thread grass (*Hesperostipa comata*), and blue grama (*Bouteloua gracilis*). In the oak savanna and grasslands, stands of bur oak (*Quercus macrocarpa*) and bluestem (*Andropogon sp.*) can be found at the heads of some drainages. The aspen parkland is a transition zone between the prairie grasslands to the south and the boreal forests to the north. As such, the grasslands are mixed with pockets of aspen (*Populus tremuloides*). Finally, the floodplain forests contain cottonwood (*Populus sp.*), willow (*Salix sp.*), elm (*Ulmus americana*), box elder (*Acer negundo*), and green ash (*Fraxinus pennsylvanica*), with an understory of grasses and shrubs including chokecherry (*Prunus sp.*), juneberry (*Amelanchier alnifolia*), buffaloberry (*Shepherdia argentea*), and wild rose (*Rosa sp.*).

## Fauna

The floral diversity of the SOSU has supported an equal level of faunal diversity. Large game and predators include white-tailed deer (*Odocoileus virginianus*), pronghorn antelope (*Antilocapra americana*), coyote (*Canis latrans*), fox (*Vulpes vulpes*), and long-tailed weasel (*Mustela frenata*). In the past, there were also mule deer (*Odocoileus hemionus*), elk (*Cervus canadensis*), grizzly bear (*Ursus horribilis*), and bison (*Bison bison*), as well as possibly moose (*Alces alces*) and caribou (*Rangifer tarandus*). The waterways and wetlands have supported a number of semi-aquatic and aquatic species too. These include beaver (*Castor canadensis*), muskrat (*Ondatra zibethicus*), mink (*Neovison vison*), Northern pike (*Esox lucius*), yellow perch (*Perca flavescens*), bullhead (*Ameiurus sp.*), and walleye (*Sander vitreus*). Numerous coots, ducks, geese, mussels, clams, and snails also inhabit these water sources.

## Natural Resources

The biodiversity of the SOSU supplied a wide variety of resources for food, fuel, shelter, and water. Locally available knappable material included brown petrified wood, chert, moss agate, jasper, and Swan River chert. An abundance of granite cobbles provided broad utility for various purposes including weights for tipi covers, stone boiling and sweat bathing, and lithic tool production.



## **Geology and Soils**

The dominant soil orders are Mollisols and Entisols, but Aridisols, Vertisols, and Inceptisols are also present. Some of the common soil series in the region include Barnes, Buse, Hamerly, Parnell, Svea, and Williams. The soil's temperature and moisture regime is frigid/udic, with some areas of frigid/ustic. The geology underneath the soils is predominantly sandstone and shale, with some glacial lake deposits, all underlying glacial till (Bryce et al. 1998).

## **Land Use**

Most of the land in this area of North Dakota is used for farming and ranching. Spring wheat is the chief agricultural crop, but other small grains, alfalfas, sunflowers, flaxes, and hay are also grown to some extent (Bryce et al. 1998).

## **Climate**

The climate is typical of the overall continental climate of the northern Great Plains, subject to long, cold winters and hot, dry summers. The SOSU is also humid, with average annual precipitation of 16 to 19 inches (in) (406 to 483 millimeters), with much of the rainfall occurring as thunderstorms during the growing season. The frost-free period averages 109 days and ranges from 97 to 121 days (Bryce et al. 1998).



## RESEARCH GOALS/EVALUATION OF RESEARCH

Following the mandated policies implementing the National Historic Preservation Act (NHPA [Public Law 89-665]), as amended, this proposed project was inventoried to locate any cultural resources within the APE. An additional goal of the inventory was to allow Rolette Power to plan the proposed undertaking to avoid any cultural resources and, if not possible, to test, evaluate, and if necessary, mitigate impacts to the cultural resources within the proposed project area prior to construction. To accomplish this, the intent of the cultural resource work for the proposed project was to:

1. *identify any prehistoric, historic, or traditional cultural resources that may exist in (or near) the proposed project area that may be affected by project undertaking activities;*
2. *make recommendations concerning the significance and National Register eligibility of any identified cultural resources;*
3. *make appropriate recommendations regarding the treatment of all identified cultural resources;*
4. *provide a report detailing findings to the project sponsor and the responsible federal agencies.*

The goal of the inventory has been achieved; 10 newly recorded cultural resources were encountered within the project area, with one being recommended *Eligible*, seven being recommended *Not Eligible*, one being recommended *Not Eligible* but with an *Eligible* component, and one is *unevaluated* for inclusion in the National Register of Historic Places (NRHP). In addition, a previously recorded historic site lead (32ROx8) was mapped within the APE. This previously recorded cultural resource was left *unevaluated*, however, no physical manifestations of the described cultural resource was observed inside the APE during the inventory.



## LITERATURE REVIEW

KLJ archaeologist Matthew Hull conducted a literature review of the State Historical Society of North Dakota (SHSND)'s site and manuscript files on June 10, 2014. The review revealed seven previously recorded cultural resources within the one-mile search area around the APE, including five historic site leads, one historic site, and one historic/architectural site. Of these, one historic site lead (32ROx8) crosses in to the project's APE. The literature review also revealed that four manuscripts are on file within the same one-mile search area around the APE. The results of the literature review are presented in **Appendix B** (Tables 3, 4) in tabular format.



## FIELD METHODS/CONDITIONS

KLJ conducted a Class III Cultural Resource Inventory for the proposed project on June 23-26 and November 3-4, 2014 and on April 24-26 and May 18-19, 2015. Inventory work in 2014 was conducted in accordance with the 2012 *North Dakota SHPO Guidelines Manual for Cultural Resource Inventory Projects* and the *Secretary of Interior's Standards and Guidelines for Archaeology and Historic Preservation* (48CFR 44716-44742). The APE was inventoried using parallel pedestrian transects spaced no more than 20 meters (m) apart. The 2015 inventory was conducted in accordance with the 2015 *North Dakota SHPO Guidelines Manual for Cultural Resource Inventory Projects* and the *Secretary of Interior's Standards and Guidelines for Archaeology and Historic Preservation* (48CFR 44716-44742). The APE was inventoried using serpentine pedestrian transects spaced no more than 15 m apart. Shovel probing in high probability areas with low GSV (less than 20 percent) occurred during the 2015 survey session. Field personnel included KLJ archaeologists Timothy Dodson, Matthew Hull, Corey Yates, Sean Gordon, Jennifer Allen, and Kara Allison.

GSV ranged from 0-100 percent throughout the APE (averaging 45 percent) and included plowed fields, native prairie, and riparian vegetation. The weather ranged from warm and sunny to cold and overcast, but with a constant breeze.

### Shovel Probing

Twenty-eight shovel probes (SPs) were excavated on May 18-19, 2015 by KLJ archaeologists Timothy Dodson, Corey Yates, Matthew Hull, and Sean Gordon. The SPs were approximately 35 centimeter (cm) by 35 cm (or roughly two shovel widths) dug until sterile (pre-Holocene) soils were reached. The SPs were dug as one continuous level.

All excavated soils were screened through ¼" screen mesh in order to recover subsurface artifacts. A total of 28 SPs were excavated during this project to an average depth of 45 cm below surface (cmbs); all were negative for cultural material. There were two foci for the SPs, a prominent north-south ridge near the center of the project area, and a high terrace overlooking Ox Creek near the southwest corner of the project area. The SP locations were chosen during a meeting with the State Archaeologist. Recently plowed agricultural fields were not probed. A thorough record of SPs were kept detailing soil changes, overall depth, photographs of the general stratigraphy, and any other pertinent information.



**Table 2:** Results of Shovel Probing, Near Ox Creek.

SP #	Layer A Soil/Depth	Layer B Soil/Depth	Layer C Soil/Depth	Ending Depth (CM)	Positive/ Negative
1	0-16 cmbs 10YR 3/1 loam	16-28 cmbs 10YR 5/3 silt	28-47 cmbs 10YR 6/3 silt	47	Negative
2	0-15 cmbs 10YR 3/1 loam	15-25 cmbs 10YR 5/3 silt	25-45 cmbs 10YR 6/3 silt	45	Negative
3	0-30 cmbs 10YR 3/1 loam	30-47 cmbs 10YR 5/3 silt		47	Negative
4	0-10 cmbs 10YR 3/1 loam	10-38 cmbs 10YR 6/3 silt		38	Negative
5	0-26 cmbs 10YR 3/1 loam	26-29 cmbs 10YR 5/3 silt	29-34 cmbs 10YR 6/3 silt	34	Negative
6	0-25 cmbs 10YR 3/1 loam	25-37 cmbs 10YR 6/3 silt		37	Negative
7	0-11 cmbs 10YR 3/1 loam	11-26 cmbs 10YR 5/3 silt	26-38 cmbs 10YR 6/3 silt	38	Negative

**Table 3:** Results of Shovel Probing, North Side of Ridgeline.

SP #	Layer A Soil/Depth	Layer B Soil/Depth	Ending Depth (CM)	Positive/ Negative
1	0-32 cmbs 10YR 4/2 organic sandy silt loam	32-53 cmbs 10YR 6/4 sandy loam	53	Negative
2	0-40 cmbs 10YR 3/1 loam	40-55 cmbs 10YR 4/3 sandy silt	55	Negative
3	0-48 cmbs 10YR 2/1 loam	48-67 cmbs 2.5Y 3/2 sandy silt	67	Negative
4	0-30 cmbs 10YR 2/2 silty clay	30-42 cmbs 10YR 3/3 silty clay	42	Negative
5	0-20 cmbs 2.5Y 3/2 organic silty clay	20-44 cmbs 10YR 3/4 silty clay	44	Negative

**Table 4:** Results of Shovel Probing, South Side of Ridgeline.

SP #	Layer A Soil/Depth	Layer B Soil/Depth	Layer C Soil/Depth	Layer D Soil/Depth	Ending Depth (CM)	Positive/ Negative
1	0-25 cmbs 7.5YR 2.5/2 sandy clay loam	25-43 cmbs 10YR 5/4 sandy loam			43	Negative



SP #	Layer A Soil/Depth	Layer B Soil/Depth	Layer C Soil/Depth	Layer D Soil/Depth	Ending Depth (CM)	Positive/ Negative
2	0-20 cmbs 7.5YR 2.5/2 sandy clay loam	20-30 cmbs 10YR 5/4 sandy loam			30	Negative
3	0-8 cmbs 5Y 2.5/2 organic	8-24 cmbs 2.5YR 3/6 sandy clay with iron inclusions	24-40 cmbs 10YR 4/3 sandy silt with iron inclusions	40-45 cmbs 2.5Y 4/2 sandy loam with iron inclusions	45	Negative
4	0-5 cmbs 5Y 2.5/2 organic	5-20 cmbs 2.5YR 3/6 sandy clay with iron inclusions	20-37 cmbs 10YR 4/3 sandy silt with iron inclusions	37-40 cmbs 2.5Y 4/2 sandy loam with iron inclusions	40	Negative
5	0-7 cmbs 7.5YR 2.5/2 silty clay	7-40 cmbs 2.5Y 3/2 silty loam	40-42 cmbs 2.5Y 3/2 sandy clay		42	Negative
6	0-20 cmbs 10YR 2/2 silty loam	20-42 cmbs 10YR 4/4 silty clay loam			42	Negative
7	0-20 cmbs 10YR 2/2 silty loam	20-45 cmbs 10YR 4/4 silty clay loam			45	Negative
8	0-18 cmbs 10YR 2/2 silty loam	18-25 cmbs 10YR 5/3 silty sand	25-45 cmbs 10YR 6/2 loamy sand		45	Negative
9	0-12 cmbs 10YR 2/2 silty loam	12-23 cmbs 10YR 5/3 silty sand	23-46 cmbs 10YR 6/2 loamy sand		46	Negative
10	0-11 cmbs 2.5Y 3/1 silty loam	11-25 cmbs 10YR 4/2 silty sand	25-45 cmbs 10YR 5/3 loamy sand		45	Negative
11	0-10 cmbs 2.5Y 3/2 organic silty loam	10-28 cmbs 2.5Y 3/2 silty clay loam	28-49 cmbs 10YR 5/4 rocky sand		49	Negative
12	0-12 cmbs 10YR 3/1 loam	12-30 cmbs 2.5Y 3/2 sandy loam	30-49 cmbs 10YR 5/4 rocky sand		49	Negative
13	0-16 cmbs 10YR 2/1 sandy with inclusions	16-28 cmbs 10YR 2/2 sandy with inclusions	28-47 cmbs 10YR 5/4 rocky sand		47	Negative
14	0-15 cmbs 10YR 2/1 sandy with inclusions	15-30 cmbs 10YR 2/2 sandy with inclusions	30-45 cmbs 10YR 5/4 rocky sand		45	Negative
15	0-12 cmbs 10YR 2/1 organic	12-27 cmbs 10YR 4/3 sandy silt	27-42 cmbs 10YR 5/3 rocky sand with inclusions		42	Negative
16	0-10 cmbs 10YR 2/1 organic loam	10-30 cmbs 10YR 4/3 sandy silt	30-40 cmbs 10YR 5/3 rocky sand		40	Negative





**Figure 4:** Shovel probe #2 profile, from ridge near Ox Creek, plan view.



**Figure 5:** Shovel probe #1 profile, from north part of prominent ridge, plan view.





**Figure 6:** Shovel probe #2 profile, from south part of prominent ridge, plan view.



**Figure 7:** Shovel probe #15 profile, from south part of prominent ridge, plan view.



## RESULTS

One previously recorded cultural resource and ten newly identified cultural resources were encountered during the Class III Cultural Resource Inventory.

### Previously Recorded Cultural Resource

#### 32R0x8

Originally identified as the site of the Hanson Post Office in 1980 by E. Benson as part of the 1978 Regional Environmental Assessment Program, this historic site lead is located in the NW¼, NW¼ of Section 29, T. 159 N., R. 71 W. It was left *unevaluated* for inclusion on the NRHP.

During the 2014 survey, a portion of the south half of the site lead was inventoried. At the time of the inventory, GSV was poor (averaging less than 20 percent) as the APE was within a corn field with dense crop growth. No historic artifacts or features were noted within the survey area.

As not all of the site lead was inventoried, it is recommended that it remain *unevaluated* for the NRHP. However, given the level of disturbance from agricultural practices and that no cultural material or features were observed in the inventoried area of the site lead, it is recommended that construction can take place within the inventoried corridor.





**Figure 8:** Overview of 32ROx8 inside project area, view to the east.

## **Newly Recorded Cultural Resources**

### **32R079**

This historic site consists of a large, medium density dump located within a tree wind break oriented east-west between agricultural fields. The site is a mix of historic cultural material and field stone clearing piles. A total of six features were recorded at the site.

Feature 1 consists of a rock pile with pieces of poured concrete, red bricks, and yellow bricks. It measures 25 feet (ft.) north-south by 35 ft. east-west.

Feature 2 consists a rock pile with a metal pot, barbed wire, and pieces of poured concrete. It measures 34 ft. north-south by 58 ft. east-west.

Feature 3 consists of a single rock pile with large metal barrels interspersed throughout. It measures 19 ft. north-south by 8 ft. east-west.

Feature 4 contains a rock pile and pieces of poured concrete. It measures 21 ft. north-south by 11 ft. east west.



Feature 5 consists of a rock pile with poured concrete pieces, metal barrels, sheet metal, and a wagon wheel and axle. It measures 19 ft. north-south by 23 ft. east-west.

Feature 6 contains a small rock pile that measures 8 ft. north-south by 8 ft. east-west.

The site only retain the aspect of setting, all other aspects of integrity have been compromised.

As the site is not associated with any events or people important to local, state, or regional history, it does not meet Criteria A or B. The site does not represent a unique style or distinctive characteristics of a type, period, or method of construction, therefore it is *Not Eligible* under Criterion C. The site will not provide any new or significant information to the historical archaeological record, therefore it is *Not Eligible* under Criterion D.

KLJ recommends that the site is *Not Eligible* for inclusion on the NRHP.



**Figure 9:** Overview of Feature 1, view to the northeast.





**Figure 10:** Overview of Feature 2, view to the south.



**Figure 11:** Overview of Feature 3, view to the north.





**Figure 12:** Overview of Feature 4, view to the east.



**Figure 13:** Overview of Feature 5, view to the east.





**Figure 14:** Overview of Feature 6, view to the east.



**Figure 15:** Overview of 32R079, view to the west.



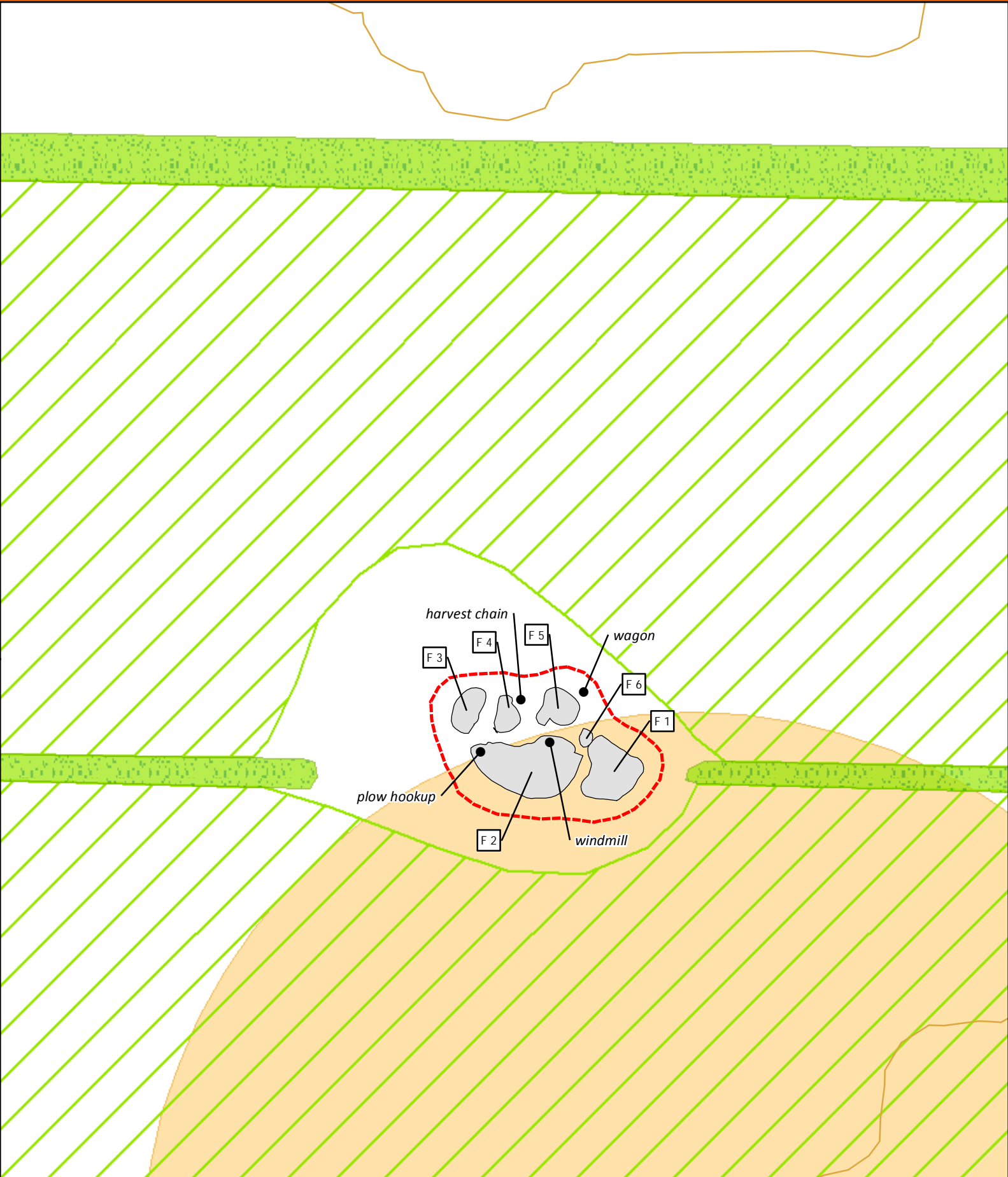


Figure 16



# 32R079 Sketch Map

- Cultural Material
- Feature
- 10 Ft Topographic Line
- ◇ Feature
- Tree Row
- ⬮ Site Boundary
- Cultivated Field
- Class III Inventory

Meters

0 25

Feet

0 80

1:800

### 32R080

This historic site consists of a small, medium density cultural material scatter (CMS) of glass, whiteware, stoneware, and undiagnostic metal. Diagnostic pieces of glass include aqua colored bottle fragments and sun colored amethyst, which date between 1880 and 1920 (Lindsey 2014). Based on the location in a field and lack of related features in the area, this site is likely from a local farmer dumping trash in a field.

The site is not associated with any events or people important to local, state, or regional history, therefore it is *Not Eligible* under Criteria A or B. The site does not represent a unique style or distinctive characteristics of a type, period, or method of construction, therefore it is *Not Eligible* under Criterion C. The site will not provide any new or significant information to the historical archaeological record, therefore it is *Not Eligible* under Criterion D.

KLJ recommends the site is *Not Eligible* for inclusion on the NRHP.



**Figure 17:** Concentration of two aqua colored bottle fragments, plan view.





**Figure 18:** Sun colored amethyst glass and unidentified metal piece, plan view.



**Figure 19:** White ware fragment, plan view.





**Figure 20:** Reddish brown salt glazed stoneware, plan view.



**Figure 21:** Overview of 32RO80, view to the north.



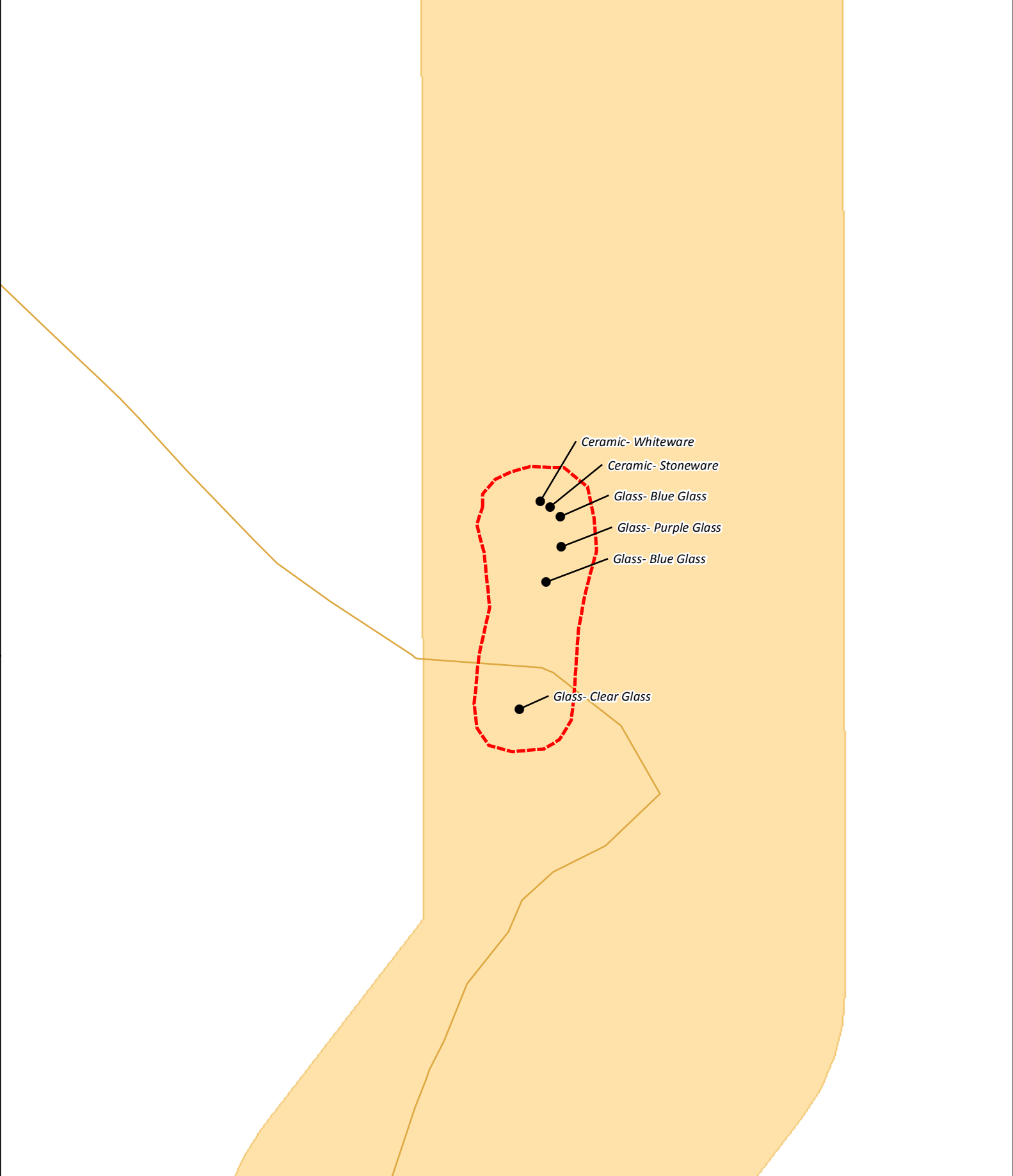


Figure 22



# 32R080 Sketch Map

- Cultural Material
- ~ 10 Ft Topographic Line
- ⬭ Site Boundary
- Class III Inventory

Meters  
0 10

Feet  
0 30

1:350

### 32RO81

This historic farmstead is located at the edge of a cultivated field. The site consists of a number of standing structures and foundations, as well as various cultural material scattered throughout. There is a total of eight features. Along the northern edge of the site, there is a historically planted shelter belt (or windbreak) of elm trees. The site is on a small ridge, surrounded by agricultural fields and overlooking Ox Creek to the east.

Feature 1 is a small, standing wooden outbuilding with no foundation and an electrical wire connected to the building. The building is constructed from milled lumber and has a small window on the western side. The outbuilding measures approximately 16 ft. north-south by 16 ft. east-west. Assorted historic cultural material was observed inside, including metal wire and fencing, glass bottles and tin cans. A porcelain tub is located just outside the northeastern corner of the building. Based on the size and shape of the building it likely served as a workshop or storage building.

Feature 2 is a large, standing Wisconsin dairy barn with a poured concrete foundation. The lower portion of the building is composed of brick and mortar, with the upper portion composed of a wooden frame and siding. A small shed addition is attached along the east side of the building, and shares the same structural system as the rest of the building. There is a sliding door on both the north and south sides, and a large bay door on the north side of the upper floor. Construction materials and farm implements are still inside the building. Based on the contents and the overall condition of the building, it is likely still in occasional use. The barn measures approximately 100 ft. north-south by 66 ft. east-west.

Given the architectural style, the structural condition and the rarity of the style in the region, it is recommended that this feature is *Eligible* for the NRHP.

Feature 3 is a small, collapsed wooden structure, with no indication of original function. The feature measures approximately 3 ft. north-south by 3 ft. east-west.

Feature 4 is a foundation and cellar composed of unmodified fieldstones and mortar, likely the original farmhouse. A small concrete walkway leads from the southern portion of the foundation to where the driveway would have been. The foundation has multiple rooms and is generally square in shape. Metal piping and pieces of cast iron, likely that of the heating system was noted in the foundation. Also an old wood/coal burning cast iron stove can be seen within the foundation. The farmhouse foundation measures approximately 50 ft. north-south by 66 ft. east-west.

Feature 5 is a large, rectangular poured concrete foundation located at the northeastern end of the site. There is a metal vehicle hood located in the center of the foundation, possibly indicating the



original use of the former structure. The poured concrete foundation measures approximately 100 ft. north-south by 66 ft. east-west.

Feature 6 is a foundation surrounded by collapsed wooden framing. The foundation consists of poured concrete with inlaid wood beams. The feature measures approximately 50 ft. north-south by 16 ft. east-west.

Feature 7 is a small cultural material scatter near Feature 2 (barn). It consists of a hay rake, the remnants of a small wooden pen, a water tank, a metal grain feeder, barbed wire, and assorted wooden boards and metal fragments. The material scatter measures approximately 50 ft. north-south by 16 ft. east-west.

Feature 8 is the roadbed of a driveway that runs from the northwest corner of the farmstead, north to a section line road. It runs along a cultivated field to the west, with the shelter belt running parallel to the east of the roadbed. The roadbed is raised and its construction created a parallel ditch approximately 3 ft. deep. The driveway is approximately a quarter mile long, with a width of approximately 8 ft.

The Bureau of Land Management Government Land Office records show the land was homesteaded by George S. Campbell in 1908. A records search of local historic periodicals, community histories, archival data, and interviews with area residents was conducted by the Rolette County Historical Society on October 7, 2014. While Campbell is the original homesteader, neither he nor his homestead appear to be of local significance.

The site as a whole only retains the aspect of setting and location however, Feature 2 (barn) demonstrates integrity of design. All other aspects of integrity have been compromised.

The site is not associated with any events or people important to local, state, or regional history, therefore it is *Not Eligible* under Criteria A or B. Most of the features of the site do not represent a unique style or distinctive characteristics of a type, period, or method of construction, but Feature 2, the Wisconsin dairy barn, does embody a distinctive type and is potentially *Eligible* under Criterion C, and should be avoided by 150 ft. Altogether, the site as a whole is *Not Eligible* under Criterion C. The site will not provide any new or significant information to the historical archaeological record, therefore it is *Not Eligible* under Criterion D.

KLJ recommends the site is *Not Eligible* for inclusion on the NRHP, however given the architectural style, the structural condition and the style's rarity in the region, it is recommended that Feature 2 is *Eligible* for the NRHP. Feature 2 should be avoided by 150 ft.





**Figure 23:** Overview of Feature 1, outbuilding, view to the south.



**Figure 24:** Overview of Feature 1, outbuilding, view to the east.





**Figure 25:** Northwest corner of Feature 2, barn, view to the southeast.



**Figure 26:** Southeast corner of Feature 2, barn, view to the northwest.





**Figure 27:** Overview of Feature 3, collapsed structure, view to the east.



**Figure 28:** Overview of Feature 4, farmhouse foundation, view to the northeast.





**Figure 29:** Overview of Feature 5, poured concrete foundation, view to the north.



**Figure 30:** Overview of Feature 6, foundation, Features 1 and 2 in background, view to the east.





**Figure 31:** Overview of Feature 7, material scatter, view to the east.



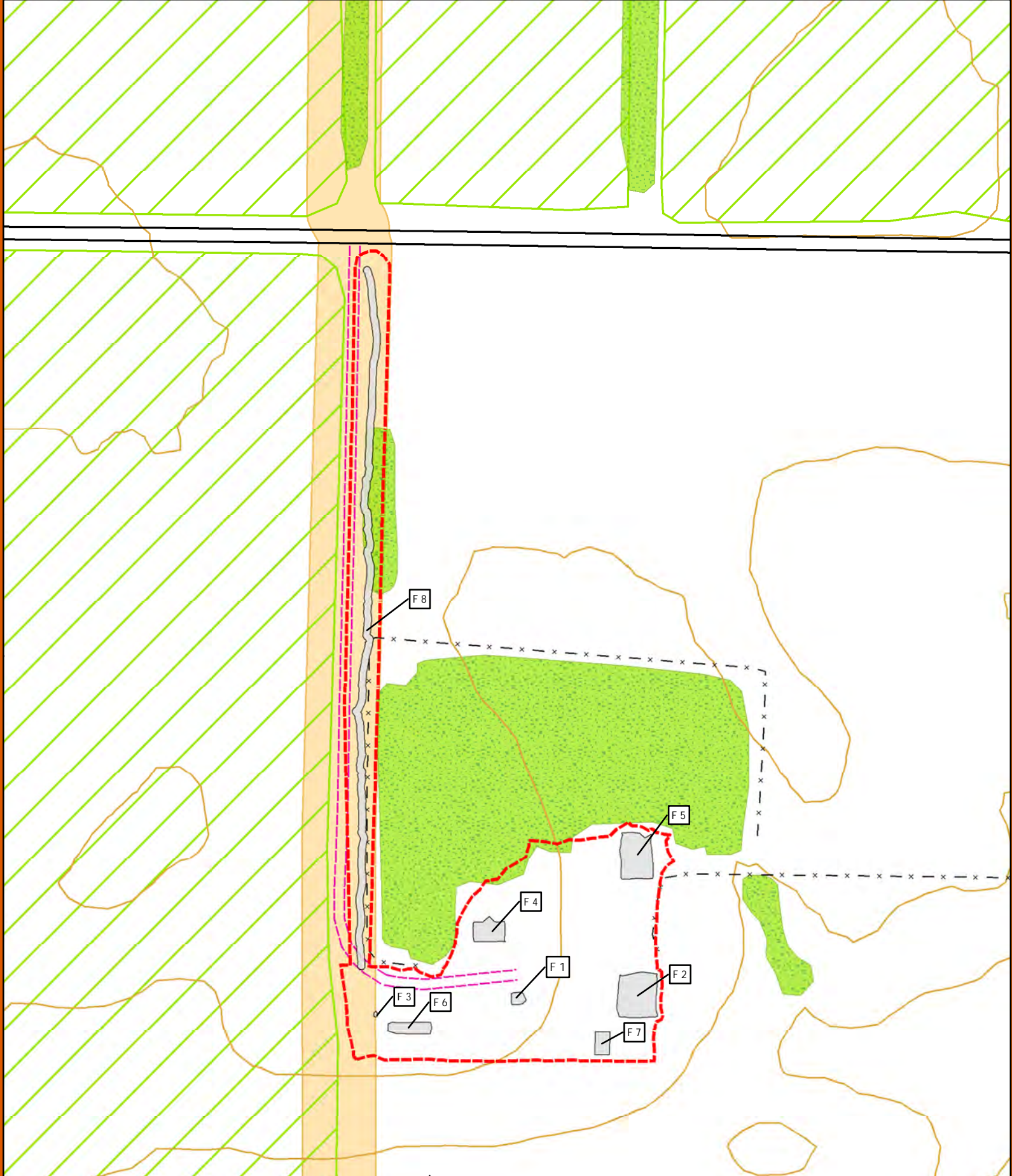
**Figure 32:** Overview of Feature 8, driveway, view to the south.





**Figure 33:** Overview of 32RO81, eastern end, view to the west.





# 32R081 Sketch Map

- Road
- × - × Fence
- Two Track
- ~ 10 Ft Topographic Line
- ◇ Feature
- Site Boundary
- Treed Area
- Cultivated Field
- Class III Inventory

Meters  
0 60

Feet  
0 200

1:2,000

## 32R082

This abandoned farmstead is located on a small rise surrounded by cultivated fields overlooking an unnamed lake to the southeast. A treed wind break surrounds the farmstead to the west and north. This historic site is comprised of 13 individual archaeological and architectural features.

Feature 1 is the main farmhouse. It has an L-shaped original floor plan and an addition in the southeast to give it a rectangular shape. The farmhouse has 1.5 stories, double hung windows, and horizontally clad wood siding that was painted white at one point. The original roof is gable style, though the addition is shed style. The addition has wood shingles that were covered in asphalt shingles that have since come off. The remains of a brick chimney can be seen protruding from the center of the roof. The farmhouse measures 26 ft. north-south by 32 ft. east-west.

Feature 2 is a bunkhouse with a square floorplan. It has a hipped roof with horizontally laid boards on top. The south and west parts of the structure are deteriorating due to age. The walls have red horizontally clad wood siding. A double-hung window and a door are located on the eastern side. A larger sliding barn door is located on the southern side. The bunkhouse measures 18 ft. north-south by 18 ft. east-west.

Feature 3 is a privy, with horizontally clad wood siding, a door with a small window above it on the south side. There are several metal cans inside the privy and several glass jars north of the structure. The privy measures 5 ft. north-south by 5 ft. east-west.

Feature 4 is a barn located next to Feature 3. It has doors on the south and east sides and also has red horizontally clad wood siding. Its gabled roof has asphalt T-lock shingles that cover wood boards, finials on the north and south ends of the ridge board, and a square metal vent hatch near the center of the roof. On the north side, there is the remains of the western wall of an addition. The barn measures 18 ft. north-south by 16 ft. east-west, though the addition would have expanded the north-south measurement to 26 ft.

Feature 5 is a large barn with a shed addition on the north side. It has a gabled roof with multiple vent hatches and wood shingles that are falling off, exposing the wooden boards underneath. Like many of the other structures, it has red horizontally clad wood siding. There is a door and windows on both the south and east sides of the structure. The barn measures 30 ft. north-south by 36 ft. east-west.

Feature 6 is a pump house for a windpump. It has a hipped roof with wood shingles that are falling off, exposing the wood boards underneath. The walls have horizontally clad wood siding and there is a doorway on the west side. The structure measures 9 ft. north-south by 9 ft. east-west. Associated with



the well house is the windpump which is missing the gearbox and bladed wheel but otherwise complete.

Feature 7 is a concrete water basin associated with the Feature 6 well house. The basin has four concrete walls that are approximately 3 ft. high on each side and 8.5 in thick. Inside the basin is an array of cultural material scatter including the pump rod and connector from Feature 6. The basin measures 11 ft. north-south by 11 ft. east-west.

Feature 8 is a concentration of cultural material from what appears to be a large collapsed barn. The debris pile consists mostly of wooden planks with wire nails and roofing timbers. Visible beneath the cultural material pile is a concrete foundation. The barn debris pile measures 73 ft. north-south by 82 ft. east-west.

Feature 9 is a small metal power box approximately 3 ft. tall.

Feature 10 is a small depression with some cultural material associated. The cultural material consists of several metal cans and unidentified metal fragments. The depression measures 14 ft. north-south by 16 ft. east-west.

Feature 11 is a large cultural material scatter located next to Feature 10. It consists of several large implements including farm machinery, a stove, a generator, a large mechanical device, a fridge, and an engine block. There are also several metal cans and unidentifiable metal pieces of various sizes. The material scatter measures approximately 30 ft. north-south by 30 ft. east-west.

Feature 12 is a slightly raised roadbed that runs roughly north-south through the site and is likely the remains of either the driveway or a half-section line road. There are two posts, one on each side of the roadbed, at the southeast end of the site. The roadbed is approximately 25 ft. in width.

Feature 13 is a large combine located in the trees to the north of Feature 2. It is a Massey Harris Super 26 combine produced in the mid-20<sup>th</sup> century.

The Bureau of Land Management Government Land Office records show the land was homesteaded by Bernt E. Haagenson in 1893. A records search of local historic periodicals, community histories, archival data, and interviews with area residents was conducted by the Rolette County Historical Society on October 7, 2014. Research showed Haagenson and his wife are of local importance, and the farmstead has stayed in the family for over 100 years.

The site is not associated with any events important to local, state, or regional history, therefore it is *Not Eligible* under Criterion A. The site is associated with someone important to local history, therefore



it is potentially *Eligible* under Criterion B. Though possibly eligible under Criterion B, the site does not represent a unique style or distinctive characteristics of a type, period, or method of construction, therefore it is *Not Eligible* under Criterion C. Unlikely to provide any significant knowledge or insight to the historical archaeological record of the area the site doesn't meet the requirements for Criterion D.

As this historic farmstead retains several aspects of integrity {location, association (a person of local importance) and setting} and Criterion B set forth by the National Register Bulletin, KLJ recommends the site is *Eligible* for inclusion on the NRHP.



**Figure 35:** Overview of Feature 1, farmhouse, view to the northwest.





**Figure 36:** Overview of Feature 2, bunkhouse, view to the west.



**Figure 37:** Overview of Feature 3, privy, view to the north.





**Figure 38:** Overview of Feature 4, barn, view to the west.



**Figure 39:** Overview of Feature 5, barn, view to the northwest.





**Figure 40:** Overview of Feature 6, pump house and windpump, view to the east.



**Figure 41:** Overview of Feature 7, basin, view to the east.





**Figure 42:** Overview of Feature 8, collapsed barn, view to the northeast.



**Figure 43:** Overview of Feature 9, power box, view to the north.





**Figure 44:** Overview of Feature 10, depression, view to the northeast.



**Figure 45:** Overview of Feature 11, material scatter, plan view.





**Figure 46:** Overview of Feature 12, roadbed, view to the southeast.



**Figure 47:** Overview of Feature 13, combine, view to the southeast.





**Figure 48:** Overview of 32RO82, view to the north.



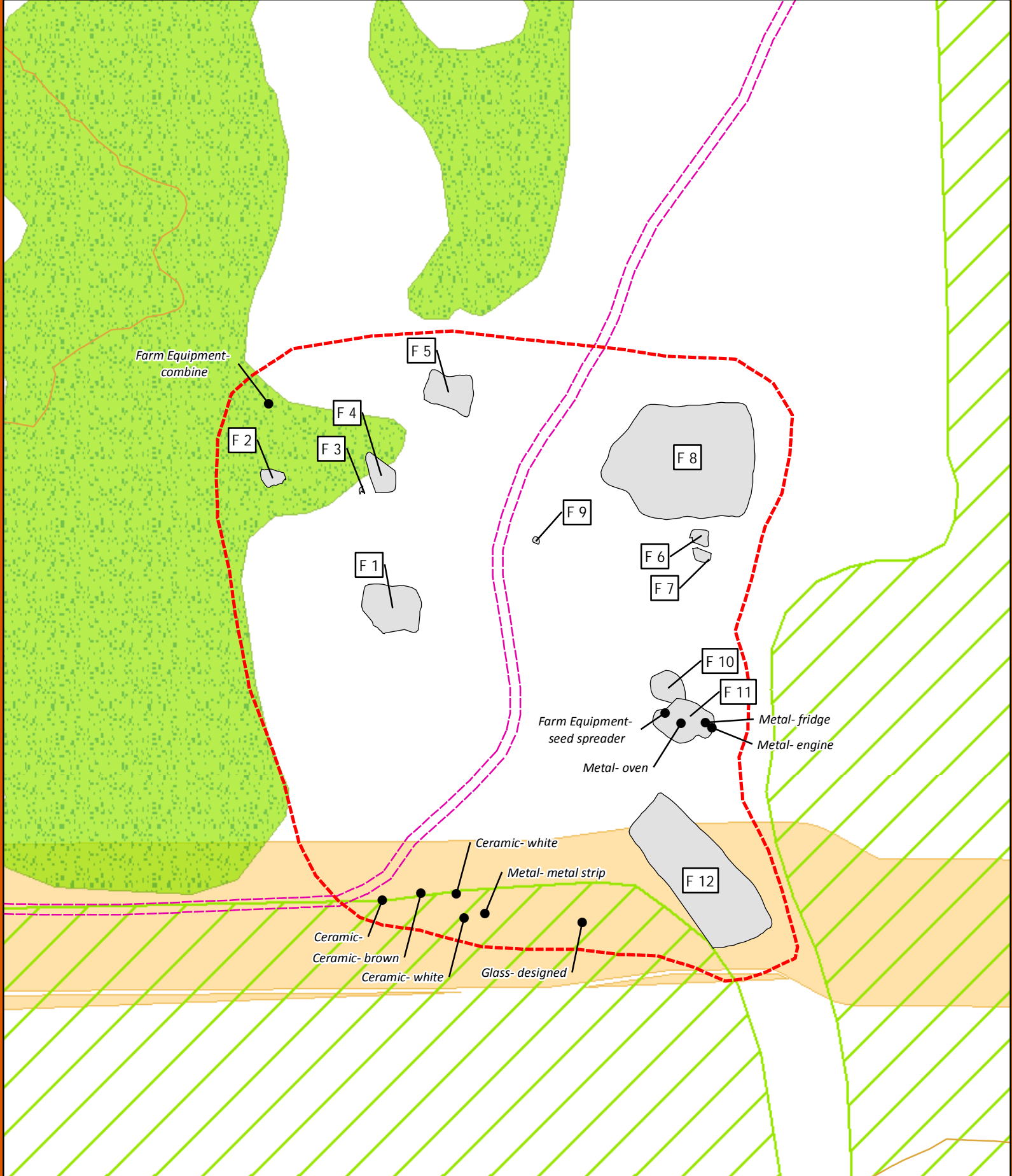
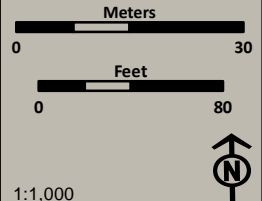


Figure 49



# 32R082 Sketch Map

- Cultural Material
- Two Track
- 10 Ft Topographic Line
- ◇ Feature
- Treed Area
- Site Boundary
- Cultivated Field
- Class III Inventory



1:1,000

### 32R084

This historic/architectural site is an abandoned farmstead overgrown with thick, high grass. It is located on a hill/ridge overlooking Ox Creek to the south and east. The site is currently in a large field of tamed prairie, and due to the thick vegetation, only a handful of features could be identified.

Feature 1 is windpump. It is at the northeast end of the site and only the superstructure and concrete foundation remains. It measures approximately 10 ft. north-south by 10 ft. east-west.

Feature 2 is a depression, likely the original farmhouse cellar. It is full of cast iron metal pieces, including a stove. It measures approximately 25 ft. north-south by 20 ft. east-west.

Feature 3 is a concrete outlined foundation located at the north end of the site. It is rectangular in shape and measures approximately 12 ft. north-south by 20 ft. east-west. No associated cultural material was observed.

Feature 4 is a cultural material scatter consisting of wood beams, metal farm equipment, and miscellaneous metal pieces. It measures approximately 65 ft. north-south by 30 ft. east-west.

The Bureau of Land Management Government Land Office records show the land was homesteaded by John G. Marion in 1904. Neither a records search of local historic periodicals, community histories, archival data nor interviews with area residents were conducted.

It is unknown if the site is associated with any events or people important to local, state, or regional history, therefore it is *unevaluated* under Criteria A or B. The site does not represent a unique style or distinctive characteristics of a type, period, or method of construction, therefore it is *Not Eligible* under Criterion C. It is unknown if the site could provide any new or significant information to the historical archaeological record due to heavy vegetation cover, therefore it is *unevaluated* under Criterion D.

KLJ left the site *unevaluated* for inclusion on the NRHP.





**Figure 50:** Overview of Feature 1, windpump, view to the west.



**Figure 51:** Overview of Feature 2, depression, view to the north.





**Figure 52:** Feature 2, possible cast iron stove piece, plan view.

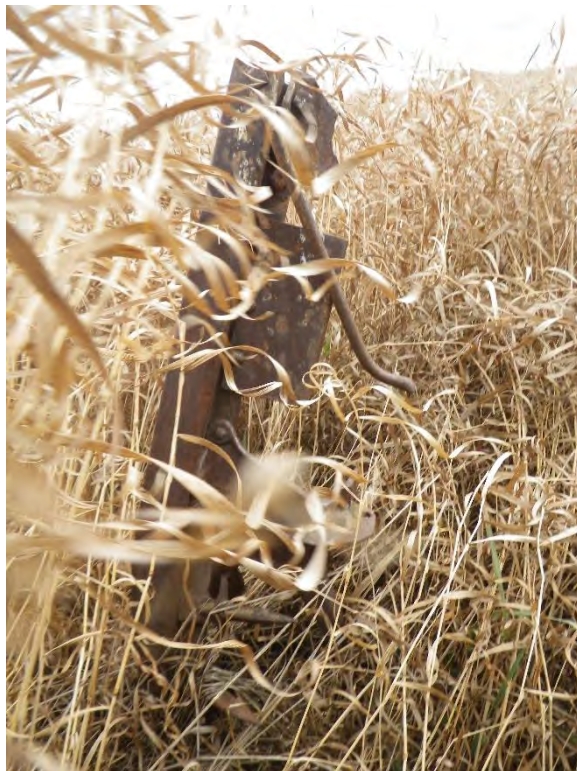


**Figure 53:** Overview of Feature 3, foundation, view to the east.





**Figure 54:** Wooden beam from Feature 4, plan view.



**Figure 55:** Metal farm implement from Feature 4, plan view.





**Figure 56:** Overview of 32RO84, from northwest corner, view to the southeast.



**Figure 57:** Overview of 32RO84, view to the east.



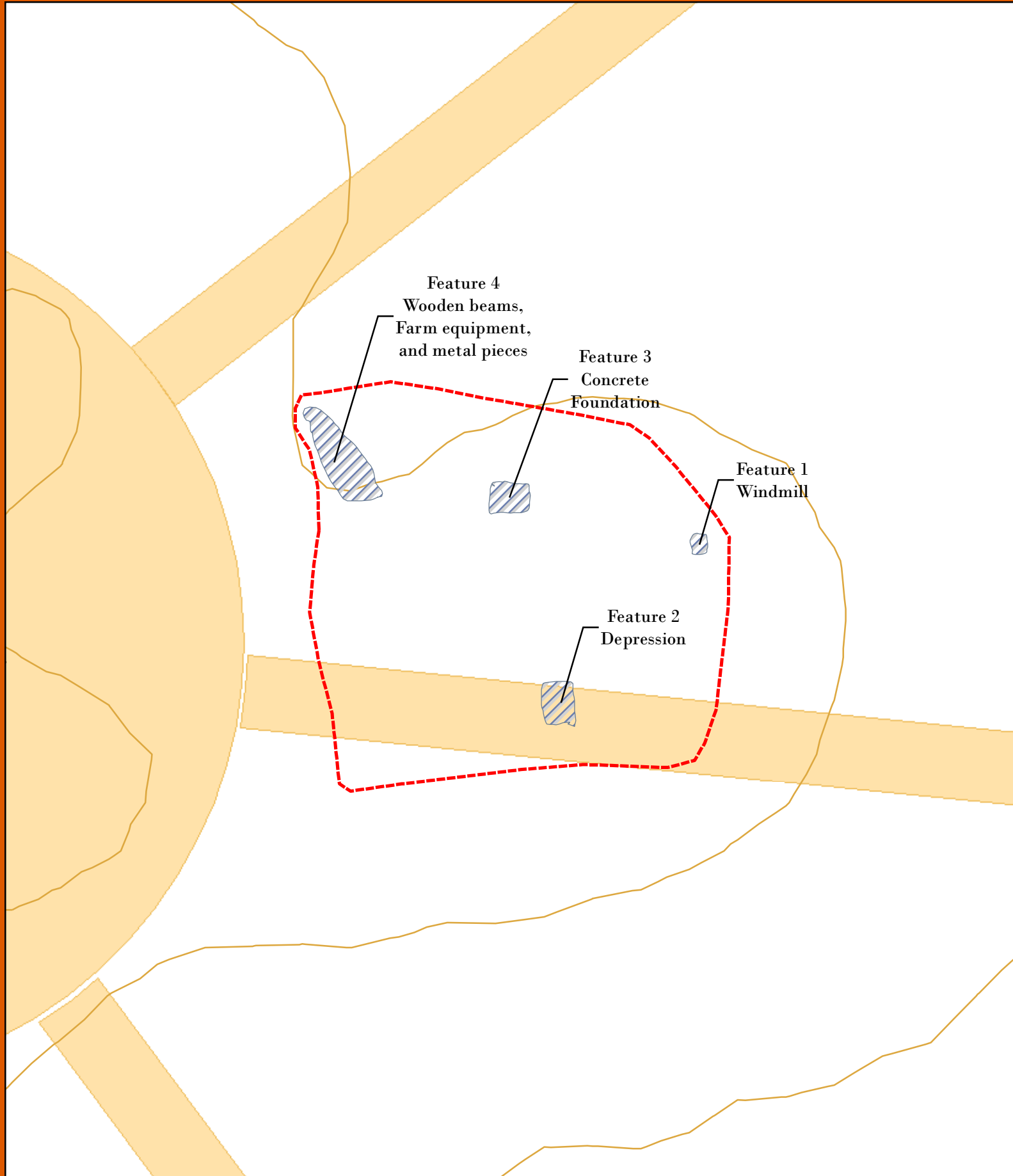






Figure 58




# 32R084 Sketch Map

-  10 Ft Topographic Line
-  Site Boundary
-  Feature
-  Class III Inventory

Meters  
0 30

Feet  
0 80

1:1,000



### 32R085

This historic site is a large, dense cultural material scatter located in a plowed bean field. Cultural material included cast iron pieces, a horseshoe, white ware, glass fragments, and a few brick pieces. During the recordation of the site a local farmer who had lived in the area said that the artifact scatter was there remains of an old farmstead that was razed several years ago. According to him the family who last occupied the property operated a small sheep ranch.

The site is not associated with any events or people important to local, state, or regional history, therefore it is *Not Eligible* under Criteria A or B. The site does not represent a unique style or distinctive characteristics of a type, period, or method of construction, therefore it is *Not Eligible* under Criterion C. The site will not provide any new or significant information to the historical archaeological record, therefore it is *Not Eligible* under Criterion D.

KLJ recommends the site is *Not Eligible* for inclusion on the NRHP.

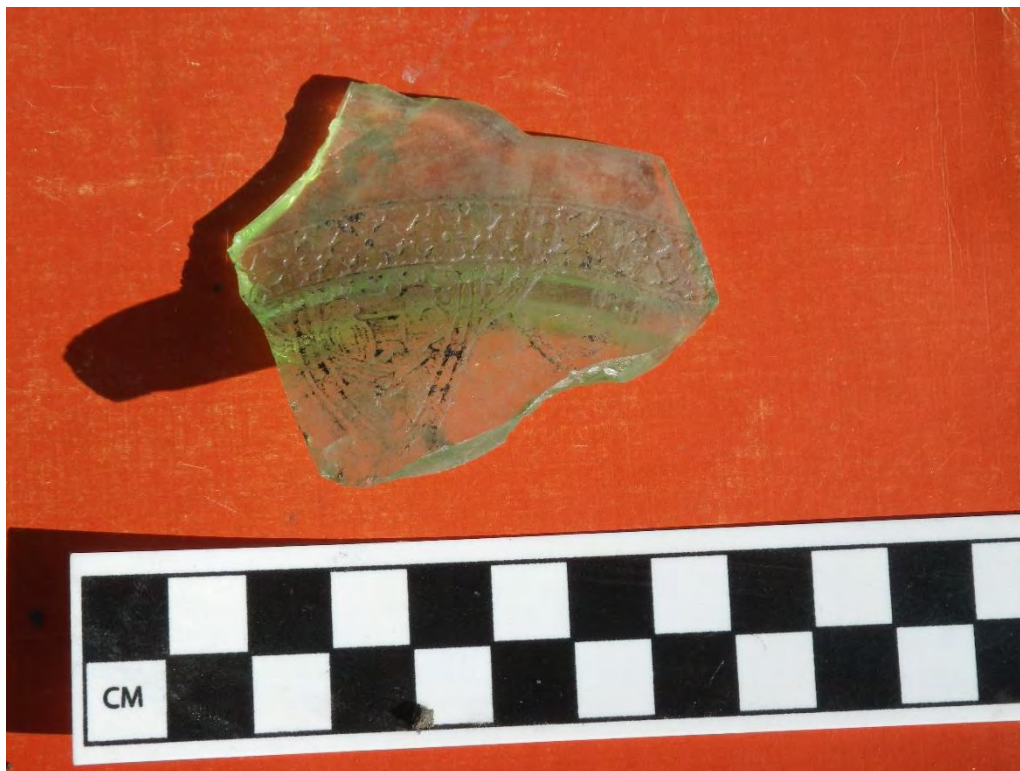


Figure 59: Decorative glass base, plan view.





Figure 60: Ceramic insulator, plan view.



Figure 61: Metal horseshoe, plan view.





**Figure 62:** Piece of masonry, plan view.



**Figure 63:** Overview of 32R085, pin flags at artifacts, view to the north.



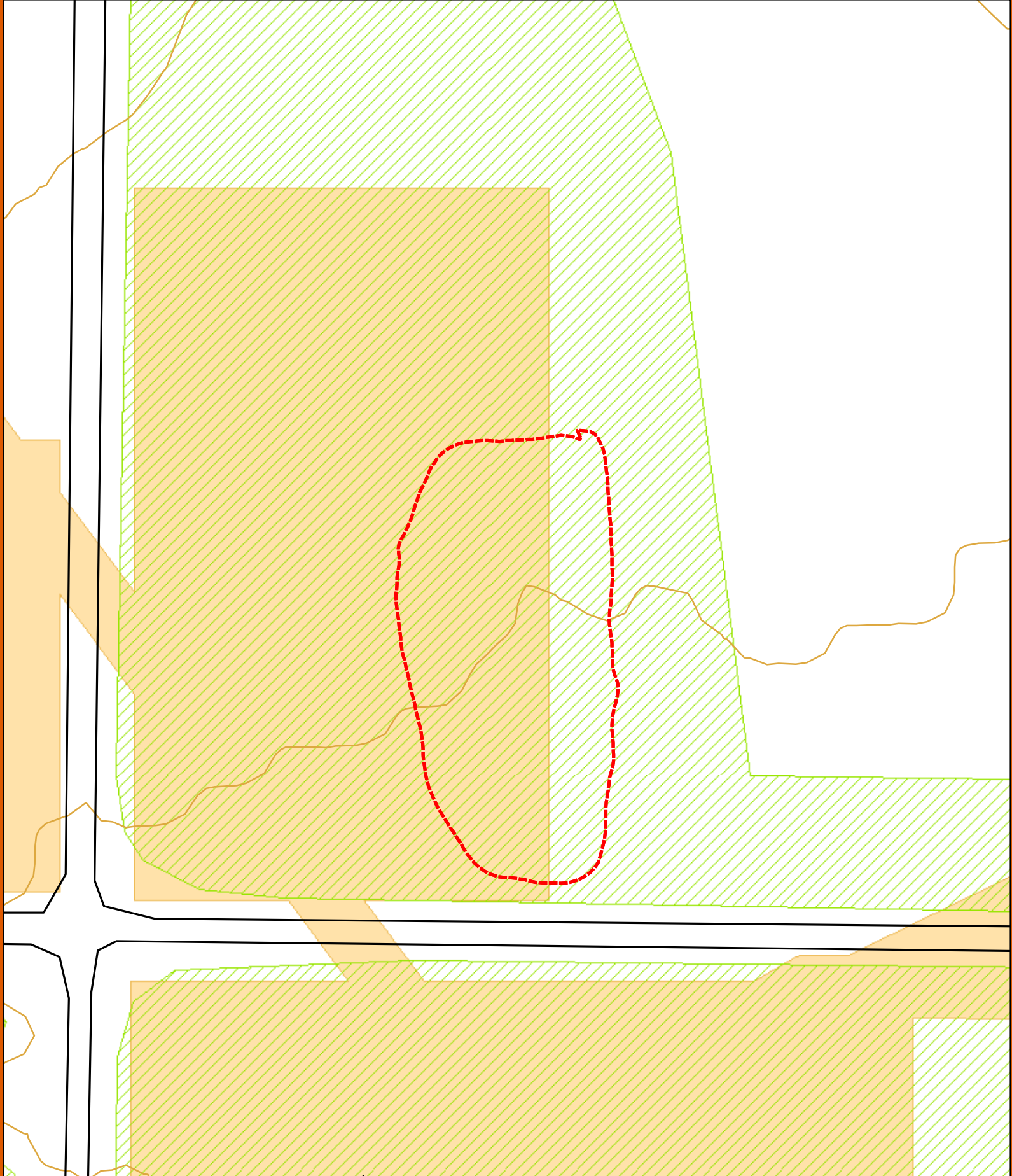





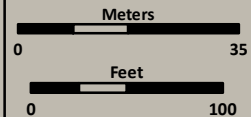


Figure 64



# 32R085 Sketch Map

-  10 Ft Topographic Line
-  Road
-  Class III Inventory
-  Cultivated Field
-  Site Boundary



1:1,200



### 32ROx113

This historic isolated find consists of a single clear glass container base and body found in a recently planted corn field. It contains a maker's mark which shows the manufacturer to be Brockway Glass Company, before it merged with Owens-Illinois Glass Company in 1988 (Lockhart et al. 2013). This indicates the artifact pre-dates 1988.

The isolated find is not associated with any events or people important to local, state, or regional history, therefore it is *Not Eligible* under Criteria A or B. The isolated find does not represent a unique style or distinctive characteristics of a type, period, or method of construction, therefore it is *Not Eligible* under Criterion C. The isolated find will not provide any new or significant information to the historical archaeological record, therefore it is *Not Eligible* under Criterion D.

KLJ recommends the isolated find is *Not Eligible* for inclusion on the NRHP.



**Figure 65:** View of glass container base showing maker's mark, plan view.





**Figure 66:** Side view of glass container base and bottom, plan view.



**Figure 67:** Overview of 32ROx113, view to the west.



### 32ROx114

This prehistoric isolated find consists of a single Besant projectile point manufactured from heat exposed Tongue River silicified sediment. Typical of a Besant projectile point (AD 600-1200), it is side-notched, with a slightly concave base, and excurvate edges. Located in an agricultural field, recently planted with corn likely explains why a small portion of the tip is missing. Overall the projectile point is approximately 95 percent complete.

The isolated find is not associated with any events or people important to local, state, or regional history, therefore it is *Not Eligible* under Criteria A or B. The isolated find does not represent a unique style or distinctive characteristics of a type, period, or method of construction, therefore it is *Not Eligible* under Criterion C. The isolated find will not provide any new or significant information to the historical archaeological record, therefore it is *Not Eligible* under Criterion D.

KLJ recommends the isolated find is *Not Eligible* for inclusion on the NRHP.



**Figure 68:** Close-up of Besant projectile point, dorsal surface.





**Figure 69:** Overview of 32ROx114, view to the north.

### **32ROx115**

This prehistoric isolated find consists of a single secondary Knife River flint (KRF) utilized flake found on the slope of a hill in a recently planted beet field. It has one edge that appears worked, and both edges have possible utilization scars.

The isolated find is not associated with any events or people important to local, state, or regional history, therefore it is *Not Eligible* under Criteria A or B. The isolated find does not represent a unique style or distinctive characteristics of a type, period, or method of construction, therefore it is *Not Eligible* under Criterion C. The isolated find will not provide any new or significant information to the historical archaeological record, therefore it is *Not Eligible* under Criterion D.

KLJ recommends the isolated find is *Not Eligible* for inclusion on the NRHP.





**Figure 70:** Close-up of utilized KRF flake, dorsal surface.



**Figure 71:** Overview from 32ROx115, view to the north.



32ROx116

This prehistoric isolated find consists of one KRF flake and one Swan River chert biface fragment found in a flat field of recently planted corn. The KRF flake is a large secondary flake and the biface fragment is possibly the upper half of a projectile point or knife.

The isolated find is not associated with any events or people important to local, state, or regional history, therefore it is *Not Eligible* under Criteria A or B. The isolated find does not represent a unique style or distinctive characteristics of a type, period, or method of construction, therefore it is *Not Eligible* under Criterion C. The isolated find will not provide any new or significant information to the historical archaeological record, therefore it is *Not Eligible* under Criterion D.

KLJ recommends the isolated find is *Not Eligible* for inclusion on the NRHP.



Figure 72: KRF secondary flake, ventral surface.





**Figure 73:** Swan River chert biface fragment, plan view.



**Figure 74:** Overview of 32ROx116, vest at artifacts, view to the west.



## SUMMARY AND MANAGEMENT RECOMMENDATIONS

KLJ was contracted by Rolette Power to conduct a Class III Cultural Resource Inventory for the proposed construction of the Rolette Wind Power Project. A total of 845.51 acres were surveyed to Class III standards. The inventory was conducted on June 23-26 and November 3-4, 2014 and April 24-26 and May 18-19, 2015 by KLJ archaeologists Timothy Dodson, Matthew Hull, Corey Yates, Sean Gordon, Jennifer Allen, and Kara Allison.

A total of one previously recorded and ten previously unrecorded cultural resources are located within the APE. The new cultural resources include three historic/architectural sites, three historic sites, three prehistoric isolated finds, and one historic isolated find. In addition, one historic site lead was revisited.

One of the historic/architectural sites (32RO82) is *Eligible* for inclusion on the NRHP. Another historic/architectural site (32RO81) is recommended *Not Eligible*, though a component of it (Feature 2) is recommended *Eligible*. The final historic/architectural site (32RO84) is *unevaluated* for inclusion on the NRHP. All three historic sites (32RO79, 32RO80, 32RO85), three prehistoric isolated finds (32ROx114, 32ROx115, 32ROx116), and one historic isolated find (32ROx113) are recommended *Not Eligible* for inclusion on the NRHP. The historic site lead (32ROx8), while remaining *unevaluated*, could not be located inside the APE.

Provided the construction takes place within the inventoried area, and that all *Eligible* and *unevaluated* cultural resources/components are avoided by 150 ft. until further research can be conducted, KLJ recommends a finding of *No Significant Sites Affected* for the proposed project as inventoried, mapped, photographed, and described herein.

**Table 5:** Summary of Management Recommendations

SITS #	Cultural Resource Type	NRHP Status	Recommendation
32ROx8	Historic – Site Lead	Unevaluated	As long as disturbance occurs in inventoried area, No Avoidance is Necessary
32ROx113	Historic – Isolated Find	Not Eligible	No Avoidance is Necessary
32ROx114	Prehistoric – Isolated Find	Not Eligible	No Avoidance is Necessary
32ROx115	Prehistoric – Isolated Find	Not Eligible	No Avoidance is Necessary
32ROx116	Prehistoric – Isolated Find	Not Eligible	No Avoidance is Necessary



<b>SITS #</b>	<b>Cultural Resource Type</b>	<b>NRHP Status</b>	<b>Recommendation</b>
<b>32RO79</b>	Historic – Site	Not Eligible	No Avoidance is Necessary
<b>32RO80</b>	Historic – Site	Not Eligible	No Avoidance is Necessary
<b>32RO81</b>	Historic/Architectural – Site	Not Eligible, but with Eligible component	Avoidance of 150 ft. or Further Work Necessary for Eligible component, otherwise No Avoidance is Necessary
<b>32RO82</b>	Historic/Architectural – Site	Eligible	Avoidance of 150 ft. or Further Work is Necessary
<b>32RO84</b>	Historic/Architectural – Site	Unevaluated	Avoidance of 150 ft. or Further Work is Necessary
<b>32RO85</b>	Historic – Site	Not Eligible	No Avoidance is Necessary



## REFERENCES CITED

### Bryce, Sandra et al.

1998. Ecoregions of North and South Dakota, Jamestown ND: Northern Prairie Wildlife Research Center Online. Electronic Document, <http://www.npwr.usgs.gov/resource/habitat/ndsdeco/index.htm> (Version 30NOV1998), accessed February 17, 2015.

### Bureau of Land Management

2015. Government Land Office Records. <http://www.glorerecords.blm.gov/default.aspx>  
Accessed July 15, 2014.

### Lindsey, Bill

2014. Historic Glass Bottle Identification & Information Website. The Society for Historical Archaeology. <http://www.sha.org/bottle/colors.htm#Colorless> Accessed July 3, 2014.

### Lockhart, Bill, Pete Schultz, Beau Schriever, Carol Serr, and Bill Lindsay

2013. Brockway Machine Bottle Co. and Brockway Glass Co.

### Picha, Paul R., Michael L. Gregg, and Amy Bleier

2008. *The Souris River Study Unit*. Produced by and available at the Archaeology and Historic Preservation Division, State Historical Society of North Dakota, Bismarck.

### State Historical Society of North Dakota (SHSND)

2008. *The North Dakota Comprehensive Plan for Historic Preservation: Archaeological Component*. Produced by and available at the Archaeology and Historic Preservation Division, State Historical Society of North Dakota, Bismarck.

### Turtle Mountain Star

2005. *Rolette Centennial History: Our Field of Dreams, Rolette, North Dakota*. Turtle Mountain Star. Rolla, North Dakota.





---

## **APPENDIX A: PROJECT AREA PHOTOGRAPHS**



**Figure 75:** Overview of access road and turbine pad in southwest part of project area, view to the west.



**Figure 76:** Overview of connector line in middle of project area, view to the south.





**Figure 77:** Overview of access road and turbine pad in northeast part of project area, view to the north.



**Figure 78:** Overview from turbine pad in east end of project area, view to the south.





## **APPENDIX B: LITERATURE AND FILE SEARCH RESULTS**

**Table 6:** Previously Recorded Cultural Resources within One-Mile Search Area

Twtn	Rng	Sctn	SITS	Site Type	Recorder	Eligibility
158	71	6		No cultural resources recorded		
158	72	1		No cultural resources recorded		
158	72	2		No cultural resources recorded		
158	72	3		No cultural resources recorded		
159	71	4		No cultural resources recorded		
159	71	5		No cultural resources recorded		
159	71	6		No cultural resources recorded		
159	71	7		No cultural resources recorded		
159	71	8		No cultural resources recorded		
159	71	9	32ROx6	Historic – Site Lead, Eliza Post Office	E. Benson, 1980	Unevaluated
159	71	10		No cultural resources recorded		
159	71	15		No cultural resources recorded		
159	71	16		No cultural resources recorded		
159	71	17		No cultural resources recorded		
159	71	18		No cultural resources recorded		
159	71	19		No cultural resources recorded		
159	71	20		No cultural resources recorded		
159	71	21		No cultural resources recorded		
159	71	22		No cultural resources recorded		
159	71	28		No cultural resources recorded		
159	71	29	32ROx8	Historic – Site Lead, Hanson Post Office	E. Benson, 1980	Unevaluated
159	71	30		No cultural resources recorded		
159	71	31		No cultural resources recorded		
159	71	32	32RO34	Architectural/Historic – Ox Creek Church and Cemetery	A. Bleier, 2005	Unevaluated
159	71	33		No cultural resources recorded		
159	72	1		No cultural resources recorded		
159	72	2	32ROx9	Historic – Site Lead, Deeter Log House	E. Benson, 1980	Unevaluated
159	72	3		No cultural resources recorded		
159	72	8		No cultural resources recorded		
159	72	9		No cultural resources recorded		
159	72	10		No cultural resources recorded		
159	72	11		No cultural resources recorded		
159	72	12		No cultural resources recorded		
159	72	13		No cultural resources recorded		
159	72	14		No cultural resources recorded		



TwN	Rng	Sctn	SITS	Site Type	Recorder	Eligibility
159	72	15		No cultural resources recorded		
159	72	16	32RO49	Historic – Depression	J. Hertaus, 2004	Not Eligible
159	72	17		No cultural resources recorded		
159	72	18		No cultural resources recorded		
159	72	19		No cultural resources recorded		
159	72	20		No cultural resources recorded		
159	72	21		No cultural resources recorded		
159	72	22	32ROx10	Historic – Site Lead, Calmar Post Office	E. Benson, 1980	Unevaluated
159	72	23		No cultural resources recorded		
159	72	24		No cultural resources recorded		
159	72	25		No cultural resources recorded		
159	72	26		No cultural resources recorded		
159	72	27		No cultural resources recorded		
159	72	28		No cultural resources recorded		
159	72	29		No cultural resources recorded		
159	72	30		No cultural resources recorded		
159	72	31		No cultural resources recorded		
159	72	32		No cultural resources recorded		
159	72	33		No cultural resources recorded		
159	72	34		No cultural resources recorded		
159	72	35		No cultural resources recorded		
159	72	36		No cultural resources recorded		
159	73	13		No cultural resources recorded		
159	73	24		No cultural resources recorded		
159	73	25	32ROx12	Historic – Site Lead, Denver Post Office	E. Benson, 1980	Unevaluated
159	73	36		No cultural resources recorded		

**Table 7:** Previous Inventory Manuscript List within One-Mile Search Area

MS #	Title	Author	Date
5036	Des Lacs-Souris Drainage Basin Erosion Control Study Area Cultural resources Review Part 1: Prehistoric Cultural Resources Overview & Part 2: Prehistoric and Historic Archaeological Sites on Primary Sample Units and Potential Impacts	P. Picha and M. Gregg	1990
7660	Addendum To: Ottertail Company's 230 kV Harvey/Rolla Transmission Line Cultural Resources Inventory, Wells, Pierce, and Rolette Counties, ND	B. Olson	2000
9321	Rolette Road: A Class II Cultural Resource Inventory in Rolette Co., ND	A. Bleier	2005



MS #	Title	Author	Date
9720	The Rolette Borrow Survey, Rolette County ND: A Class III Cultural Resource Inventory	W. Burns	2006

