


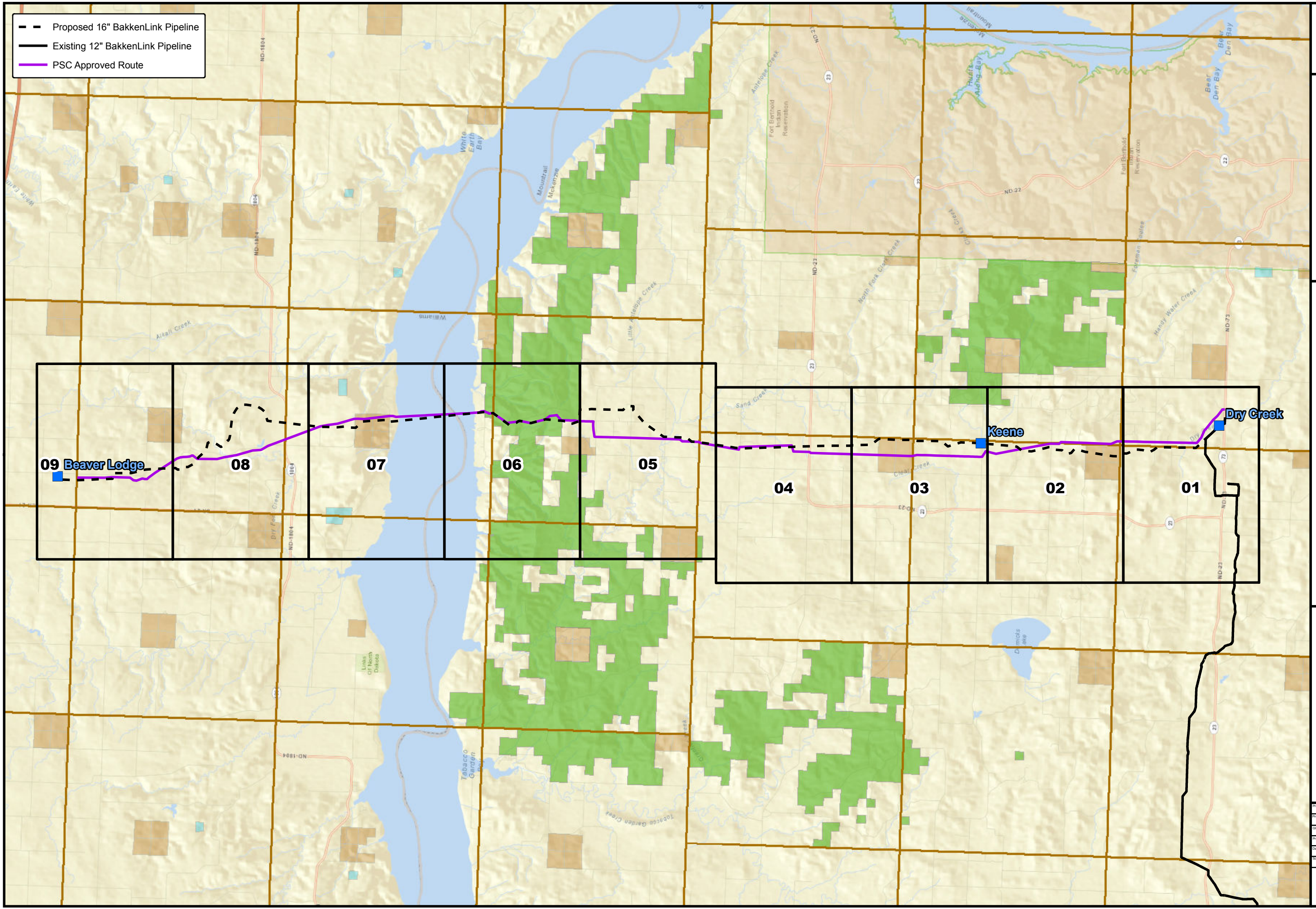


BAKKENLINK NORTH

03/19/15

-  Proposed 16" BakkenLink Pipeline
-  Existing 12" BakkenLink Pipeline
-  PSC Approved Route



BakkenLink

**BAKKENLINK DRY CREEK
TO BEAVER LODGE PIPELINE**

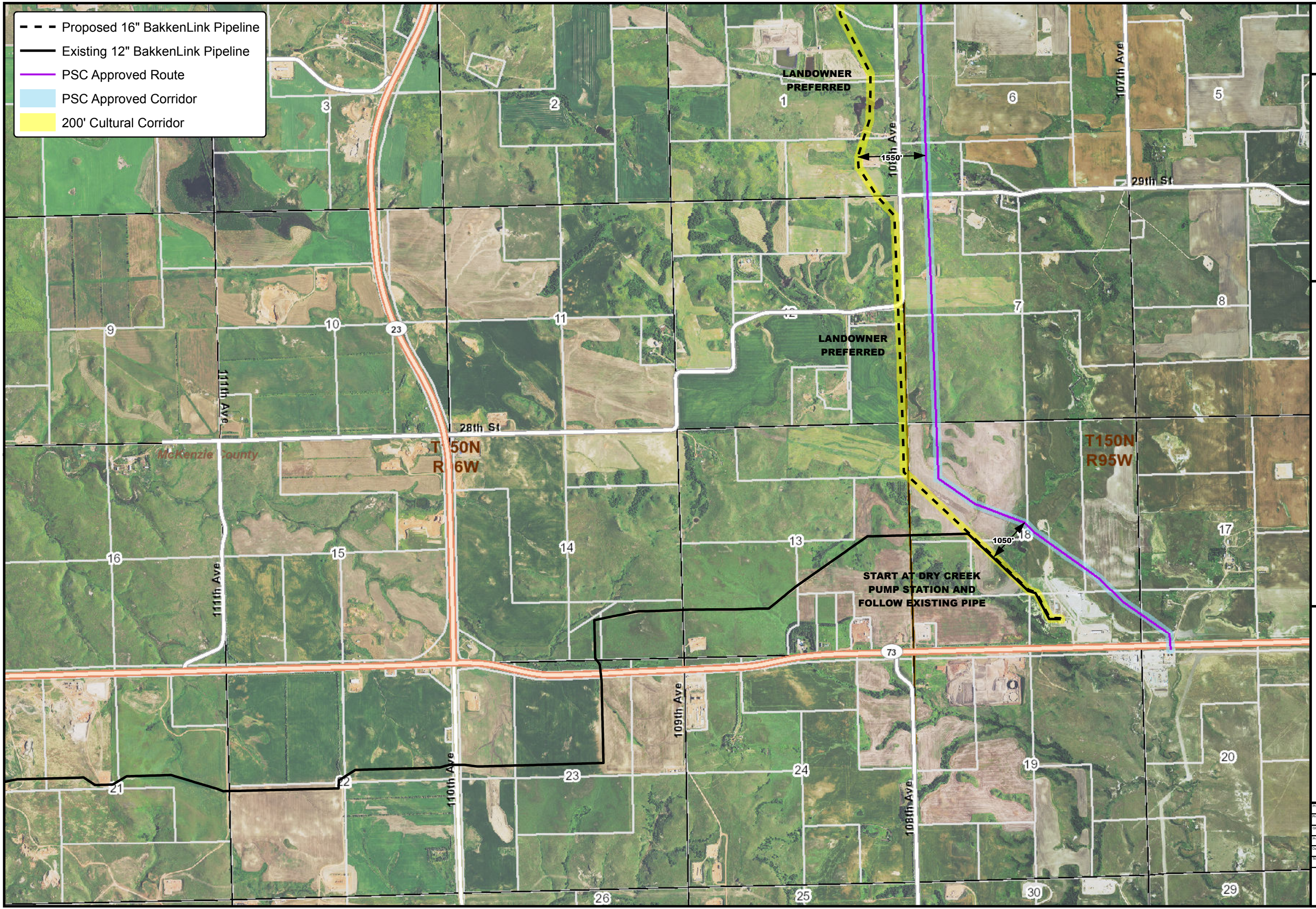
BARTLETT & WEST

Project Manager	ZJG
Project Engineer	PKG
CAD Technician	pm1000
Project Number	10003300
Date	2/26/2015
Scale	1 inch = 13,262 feet
Sheet Number	

INDEX

ALL RIGHTS RESERVED. ALL BARTLETT & WEST ENGINEERING PLANS, SPECIFICATIONS AND DRAWINGS ARE PROTECTED UNDER COPYRIGHT LAW AND NO PART MAY BE COPIED, REPRODUCED, DISPLAYED PUBLICLY, USED TO CREATE DERIVATIVES, OR DISTRIBUTED STORED IN A RETRIEVAL SYSTEM OR TRANSMITTED IN ANY FORM BY ANY MEANS WITHOUT PRIOR WRITTEN PERMISSION OF BARTLETT & WEST ENGINEERS.

- - - Proposed 16" BakkenLink Pipeline
- Existing 12" BakkenLink Pipeline
- PSC Approved Route
- PSC Approved Corridor
- 200' Cultural Corridor



BakkenLink

**BAKKENLINK DRY CREEK
TO BEAVER LODGE PIPELINE**

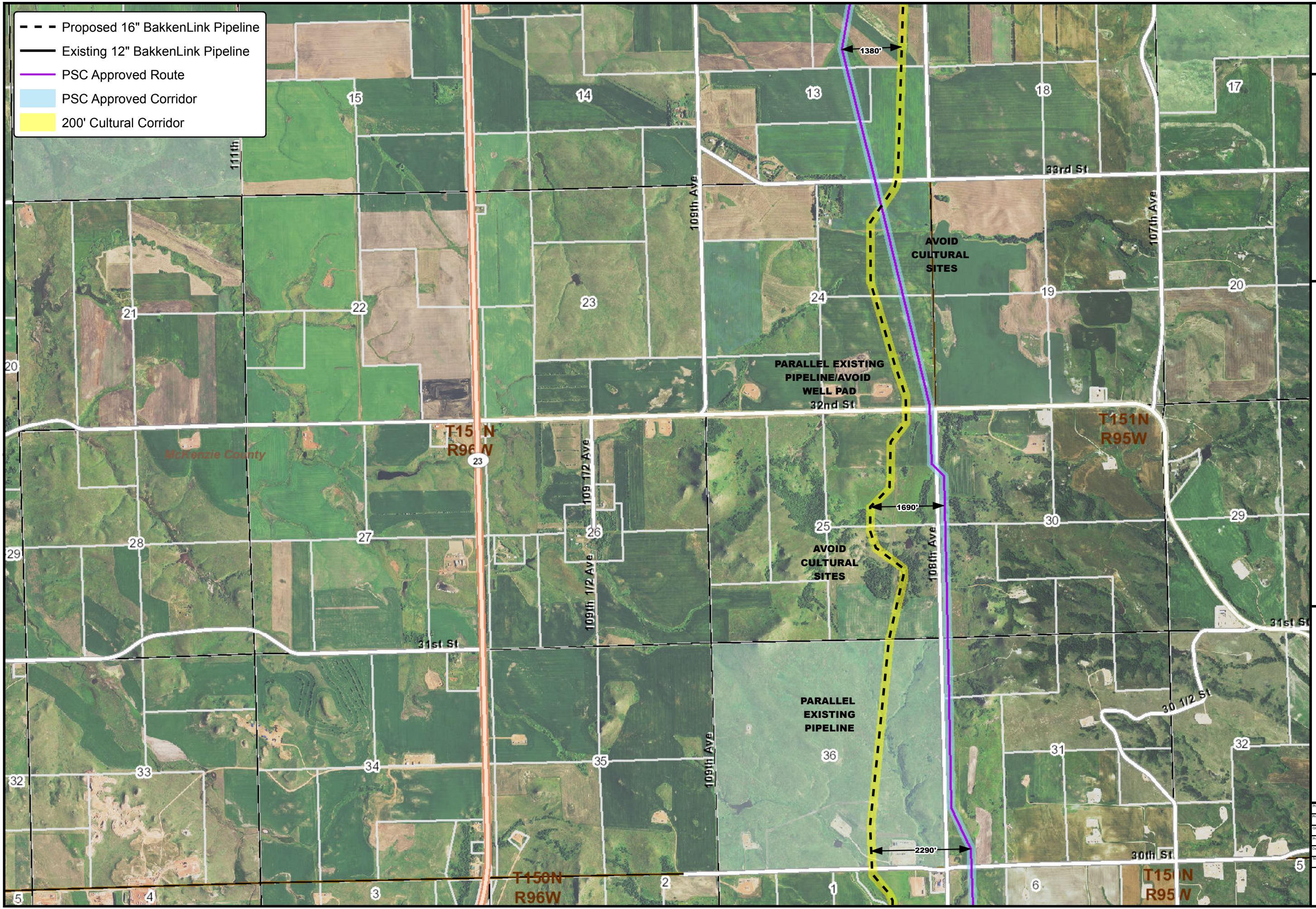
BARTLETT & WEST

Project Manager	ZJG
Project Engineer	RNG
CAD Technician	jw1000
Project Number	18653300
Date	3/19/2015
Scale	1" = 2,000'
Sheet Number	

01

ALL RIGHTS RESERVED. ALL BARTLETT & WEST ENGINEERING PLANS, SPECIFICATIONS AND DRAWINGS ARE PROTECTED UNDER COPYRIGHT LAW AND NO PART MAY BE COPIED, REPRODUCED, DISPLAYED PUBLICLY, OR TRANSMITTED IN ANY FORM OR BY ANY MEANS WITHOUT PRIOR WRITTEN PERMISSION OF BARTLETT & WEST ENGINEERS.

- - - Proposed 16" BakkenLink Pipeline
- Existing 12" BakkenLink Pipeline
- PSC Approved Route
- PSC Approved Corridor
- 200' Cultural Corridor



BakkenLink

BAKKENLINK DRY CREEK
TO BEAVER LODGE PIPELINE

BARTLETT & WEST

Project Manager	ZJG
Project Engineer	RNG
Civil Technician	jmv1000
Project Number	19853.00
Date	3/19/2015
Scale	1" = 200'
Sheet Number	02

ALL RIGHTS RESERVED. ALL BARTLETT & WEST ENGINEERING PLANS, SPECIFICATIONS AND DRAWINGS ARE PREPARED AND DRAWINGS ARE PREPARED UNDER THE PROFESSIONAL SEAL AND LICENSE OF BARTLETT & WEST ENGINEERS. DISTRIBUTION OF THIS DRAWING IS LIMITED TO THE PROJECT AND NO PART MAY BE COPIED, REPRODUCED, OR TRANSMITTED IN ANY FORM OR BY ANY MEANS WITHOUT PRIOR WRITTEN PERMISSION OF BARTLETT & WEST ENGINEERS.

- - - Proposed 16" BakkenLink Pipeline
- Existing 12" BakkenLink Pipeline
- PSC Approved Route
- PSC Approved Corridor
- 200' Cultural Corridor



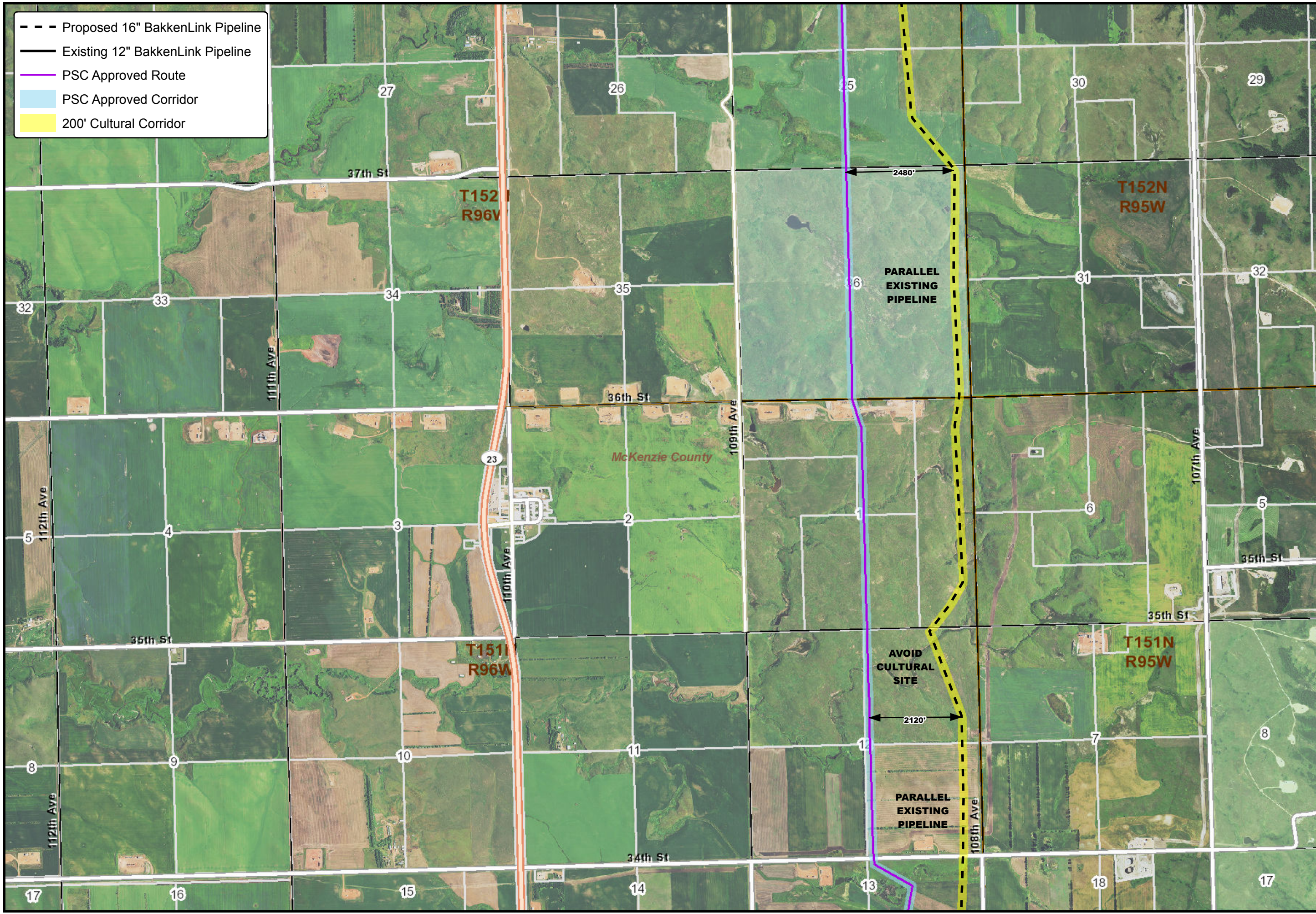
BakkenLink

**BAKKENLINK DRY CREEK
TO BEAVER LODGE PIPELINE**

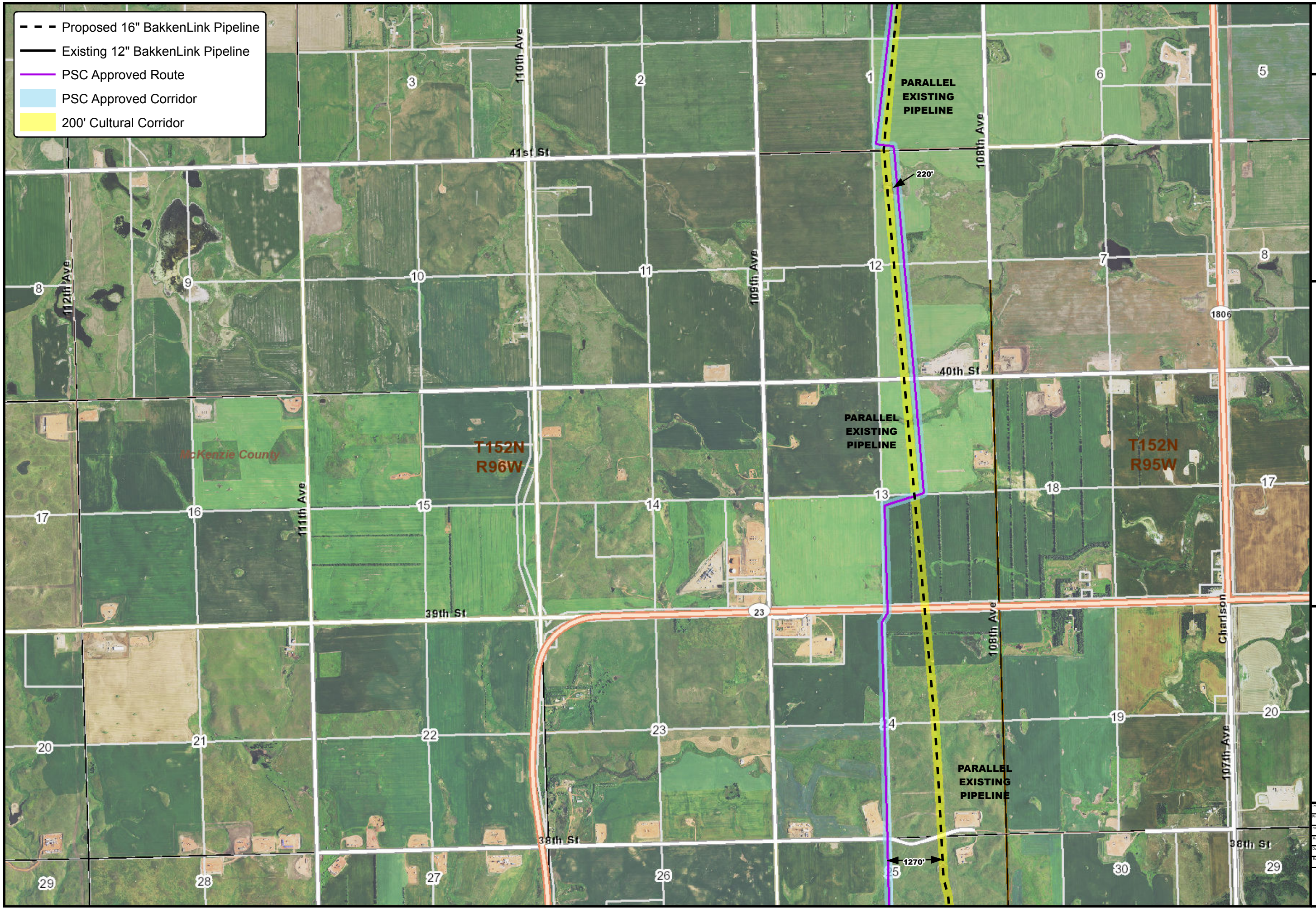
BARTLETT & WEST

Project Manager	ZJG
Project Engineer	RNG
CAD Technician	pm10800
Project Number	19933300
Date	3/19/2015
Scale	1" = 2,000'
Sheet Number	

03



- - - Proposed 16" BakkenLink Pipeline
- Existing 12" BakkenLink Pipeline
- PSC Approved Route
- PSC Approved Corridor
- 200' Cultural Corridor



BakkenLink

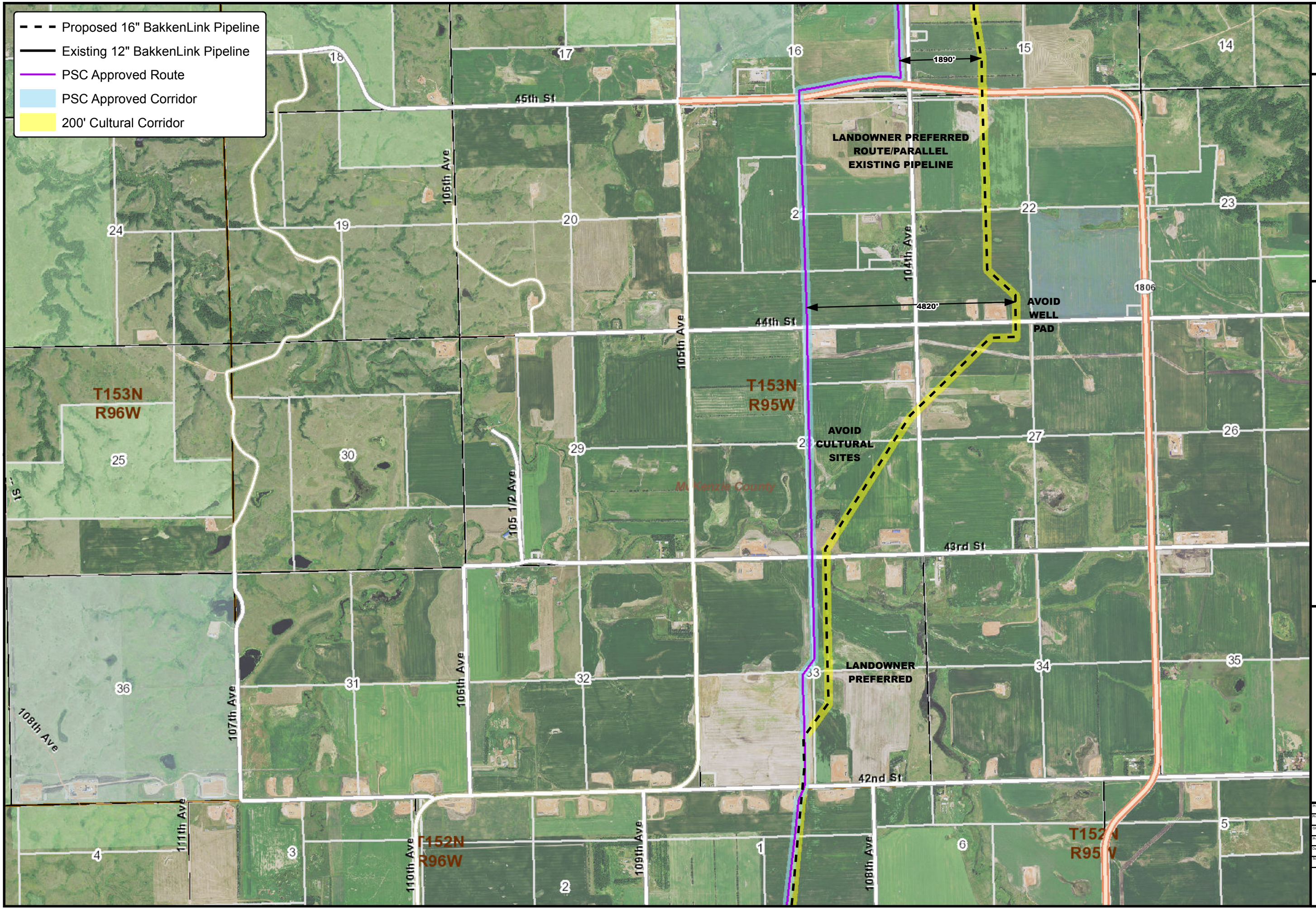
**BAKKENLINK DRY CREEK
TO BEAVER LODGE PIPELINE**

BARTLETT & WEST

Project Manager	ZJG
Project Engineer	RNG
CAD Technician	pm10100
Project Number	18853.000
Date	3/19/2015
Scale	1" = 2,000'
Sheet Number	04

ALL RIGHTS RESERVED. ALL BARTLETT & WEST ENGINEERING PLANS, SPECIFICATIONS AND DRAWINGS ARE PREPARED UNDER PROFESSIONAL ENGINEERING SUPERVISION AND ARE NOT TO BE REPRODUCED, COPIED, REPRODUCED, OR TRANSMITTED IN ANY FORM OR BY ANY MEANS WITHOUT WRITTEN PERMISSION OF BARTLETT & WEST ENGINEERS.

- - - Proposed 16" BakkenLink Pipeline
- Existing 12" BakkenLink Pipeline
- PSC Approved Route
- PSC Approved Corridor
- 200' Cultural Corridor



BakkenLink

**BAKKENLINK DRY CREEK
TO BEAVER LODGE PIPELINE**

BARTLETT & WEST

Project Manager	ZJG
Project Engineer	RNG
CAD Technician	pm1000
Project Number	19853300
Date	3/19/2015
Scale	1" = 2,000'
Sheet Number	

ALL RIGHTS RESERVED. ALL BARTLETT & WEST ENGINEERING PLANS, SPECIFICATIONS AND DRAWINGS ARE PROTECTED UNDER COPYRIGHT LAW AND NO PART MAY BE COPIED, REPRODUCED, DISPLAYED PUBLICLY, OR IN ANY MANNER TRANSMITTED IN ANY FORM OR BY ANY MEANS WITHOUT PRIOR WRITTEN PERMISSION OF BARTLETT & WEST ENGINEERS.

- Proposed 16" BakkenLink Pipeline
- Existing 12" BakkenLink Pipeline
- PSC Approved Route
- PSC Approved Corridor
- 200' Cultural Corridor

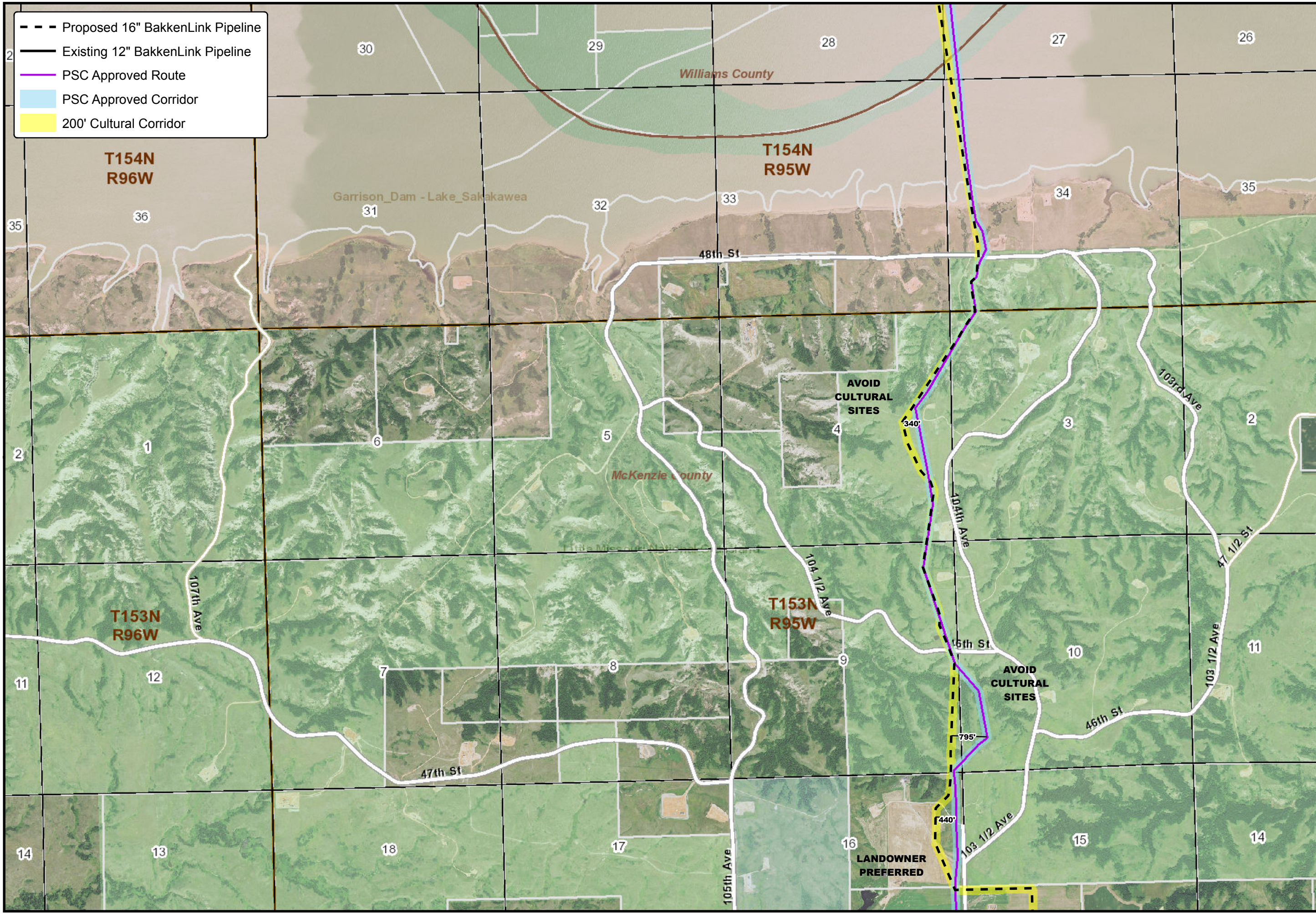


BakkenLink

**BAKKENLINK DRY CREEK
TO BEAVER LODGE PIPELINE**

BARTLETT & WEST

Project Manager	ZJG
Project Engineer	RNG
CAD Technician	pm01000
Project Number	16633300
Date	3/19/2015
Scale	1" = 2,000'
Sheet Number	06



ALL RIGHTS RESERVED. ALL BARTLETT & WEST ENGINEERING PLANS, SPECIFICATIONS AND DRAWINGS ARE PROTECTED UNDER COPYRIGHT LAW AND NO PART MAY BE COPIED, REPRODUCED, DISPLAYED PUBLICLY, OR IN ANY MANNER TRANSMITTED IN ANY FORM OR BY ANY MEANS WITHOUT PRIOR WRITTEN PERMISSION OF BARTLETT & WEST ENGINEERS.

- Proposed 16" BakkenLink Pipeline
- Existing 12" BakkenLink Pipeline
- PSC Approved Route
- PSC Approved Corridor
- 200' Cultural Corridor

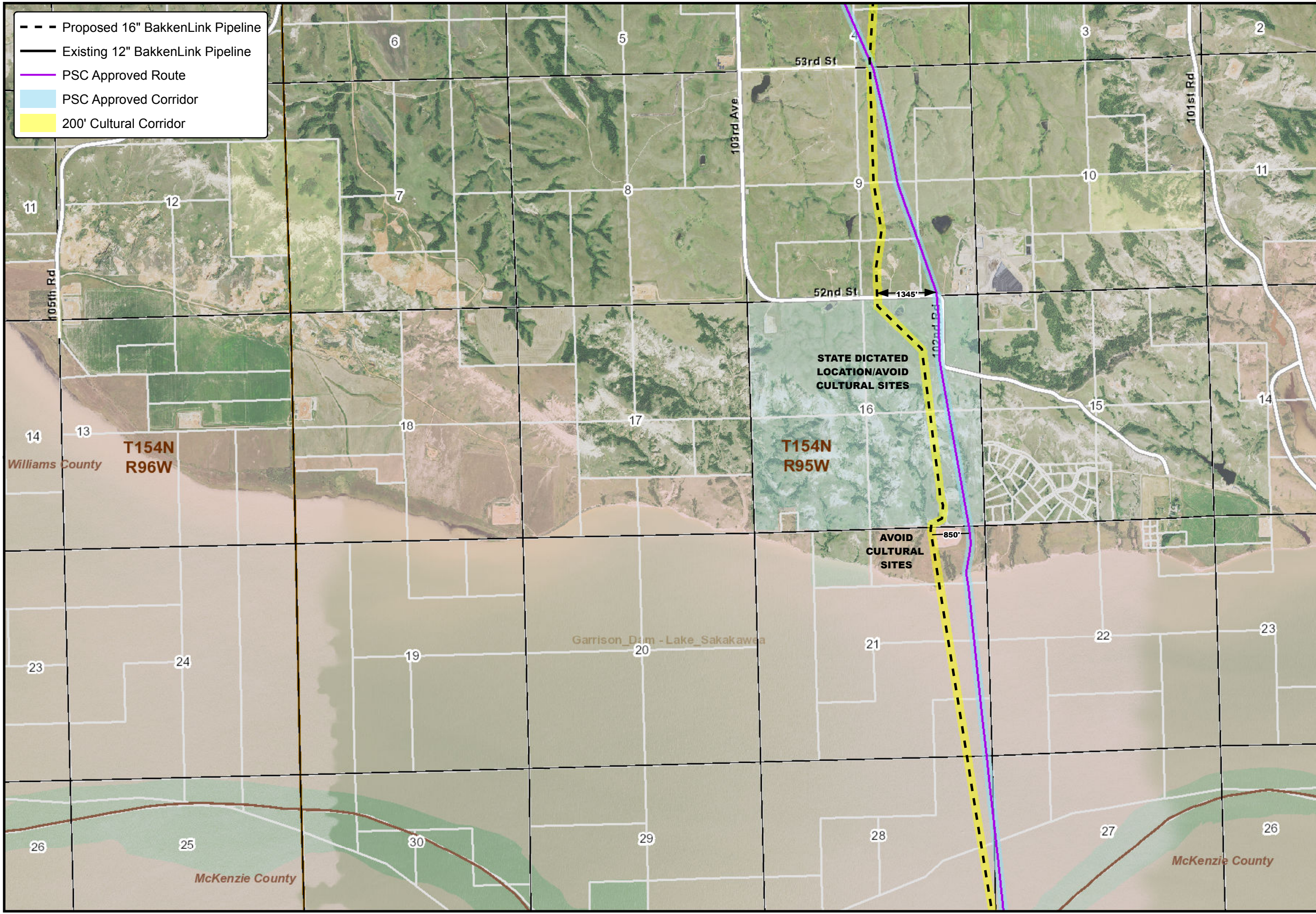


BakkenLink

BAKKENLINK DRY CREEK
TO BEAVER LODGE PIPELINE

BARTLETT & WEST

Project Manager	ZJG
Project Engineer	RNG
Civil Technician	jmv01000
Project Number	10003.000
Date	3/19/2015
Scale	1" = 2,000'
Sheet Number	07



ALL RIGHTS RESERVED. ALL BARTLETT & WEST ENGINEERING PLANS, SPECIFICATIONS AND DRAWINGS ARE PROTECTED UNDER COPYRIGHT LAW AND NO PART MAY BE COPIED, REPRODUCED, DISPLAYED PUBLICLY, USED TO CREATE DERIVATIVES, DISTRIBUTED, STORED IN A RETRIEVAL SYSTEM OR TRANSMITTED IN ANY FORM OR BY ANY MEANS WITHOUT PRIOR WRITTEN PERMISSION OF BARTLETT & WEST ENGINEERS.

- - - Proposed 16" BakkenLink Pipeline
- Existing 12" BakkenLink Pipeline
- PSC Approved Route
- PSC Approved Corridor
- 200' Cultural Corridor

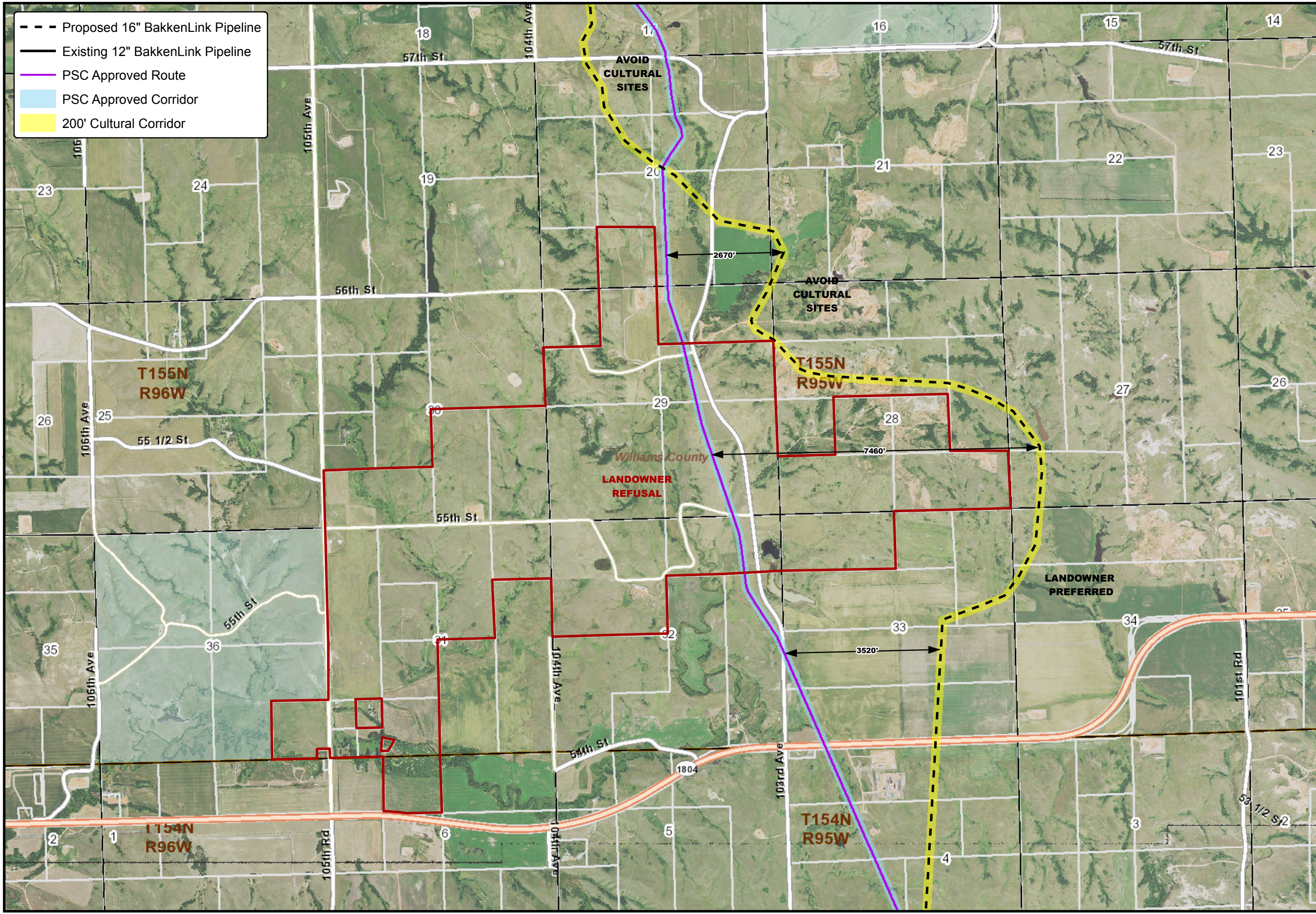


BakkenLink

BAKKENLINK DRY CREEK
TO BEAVER LODGE PIPELINE

BARTLETT & WEST

Project Manager	ZJG
Project Engineer	RNG
Civil Technician	jmv1000
Project Number	19953300
Date	3/19/2015
Scale	1" = 2,000'
Sheet Number	08



ALL RIGHTS RESERVED. ALL BARTLETT & WEST ENGINEERING PLANS, SPECIFICATIONS AND DRAWINGS ARE PREPARED UNDER COPYRIGHT LAW AND NO PART MAY BE COPIED, REPRODUCED, DISTRIBUTED PUBLICLY, OR IN ANY MANNER STORED IN A RETRIEVABLE SYSTEM OR TRANSMITTED IN ANY FORM OR BY ANY MEANS WITHOUT PRIOR WRITTEN PERMISSION OF BARTLETT & WEST ENGINEERS.

- Proposed 16" BakkenLink Pipeline
- Existing 12" BakkenLink Pipeline
- PSC Approved Route
- PSC Approved Corridor
- 200' Cultural Corridor

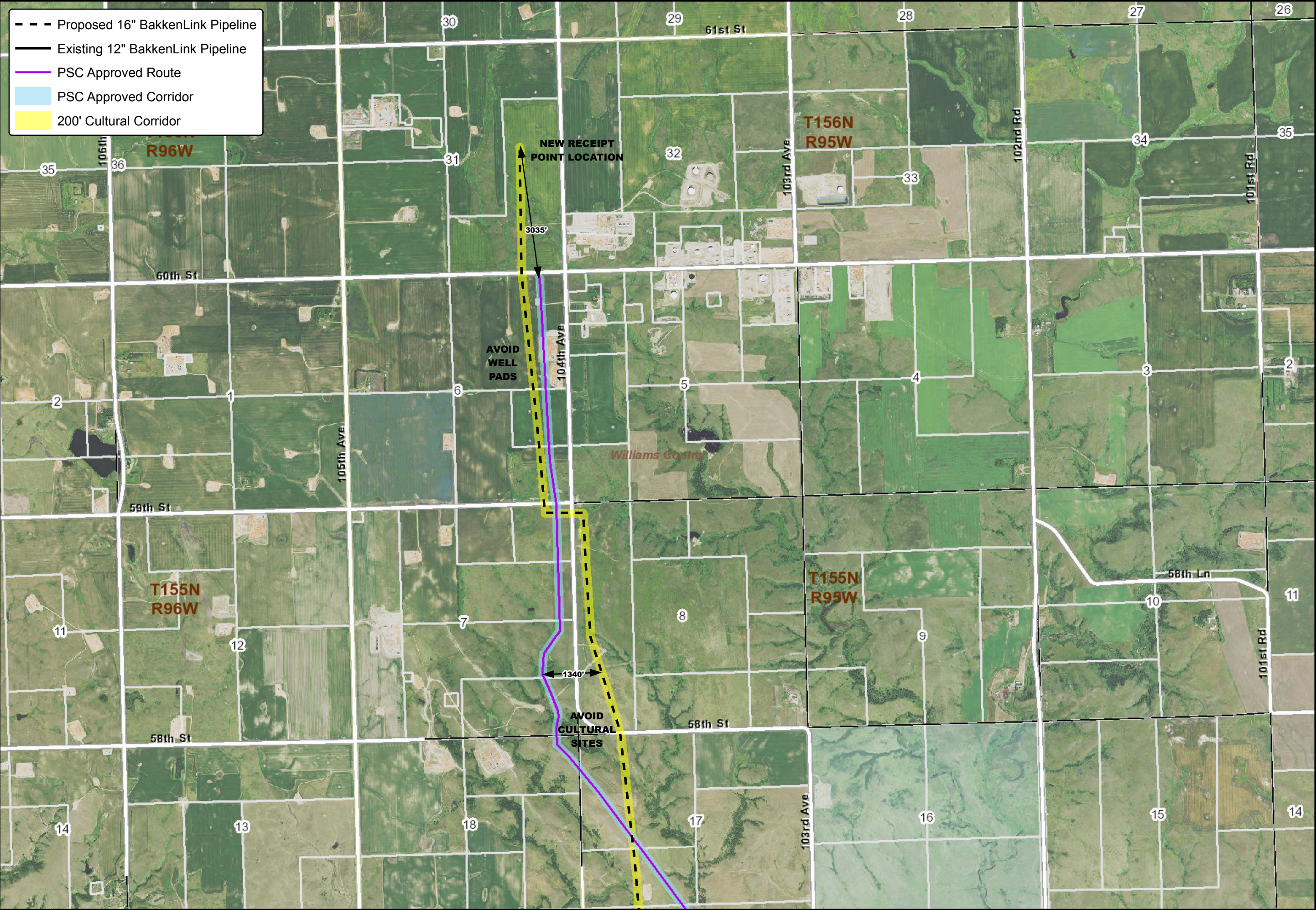


BakkenLink

BAKKENLINK DRY CREEK
TO BEAVER LODGE PIPELINE

BARTLETT & WEST

Project Manager	ZJG
Project Engineer	RNG
Civil Technician	jw10100
Project Number	19853.00
Date	3/19/2015
Scale	1" = 2,000'
Sheet Number	09



ALL RIGHTS RESERVED. ALL BARTLETT & WEST ENGINEERING PLANS, SPECIFICATIONS AND DRAWINGS ARE PROTECTED UNDER COPYRIGHT LAW AND NO PART MAY BE COPIED, REPRODUCED, DISTRIBUTED, STORED IN A RETRIEVAL SYSTEM OR TRANSMITTED IN ANY FORM OR BY ANY MEANS WITHOUT PRIOR WRITTEN PERMISSION OF BARTLETT & WEST ENGINEERS.