

Aircraft Detection Lighting System Installations At Courtenay & Border Winds Facilities

Request for Extension of Installation Deadline

Case Nos. PU-08-797, PU-17-362 (Border Winds)

Case Nos. PU-13-64, PU-15-174 (Courtenay)

North Dakota Public Service Commission
Formal Hearing
Nov. 2, 2021

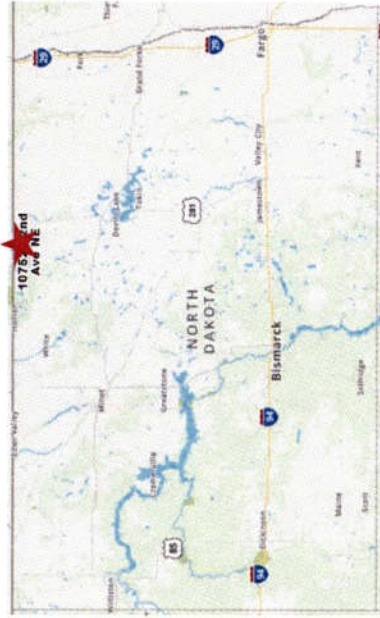
113 PU-15-174 Filed 11/02/2021 Pages: 9
Formal Hearing Presentation
Northern States Power Company

91 PU-13-64 Filed 11/02/2021 Pages: 9
Formal Hearing Presentation
Northern States Power Company

34 PU-17-362 Filed 11/02/2021 Pages: 9
Formal Hearing Presentation
Northern States Power Company

129 PU-08-797 Filed 11/02/2021 Pages: 9
Formal Hearing Presentation
Northern States Power Company

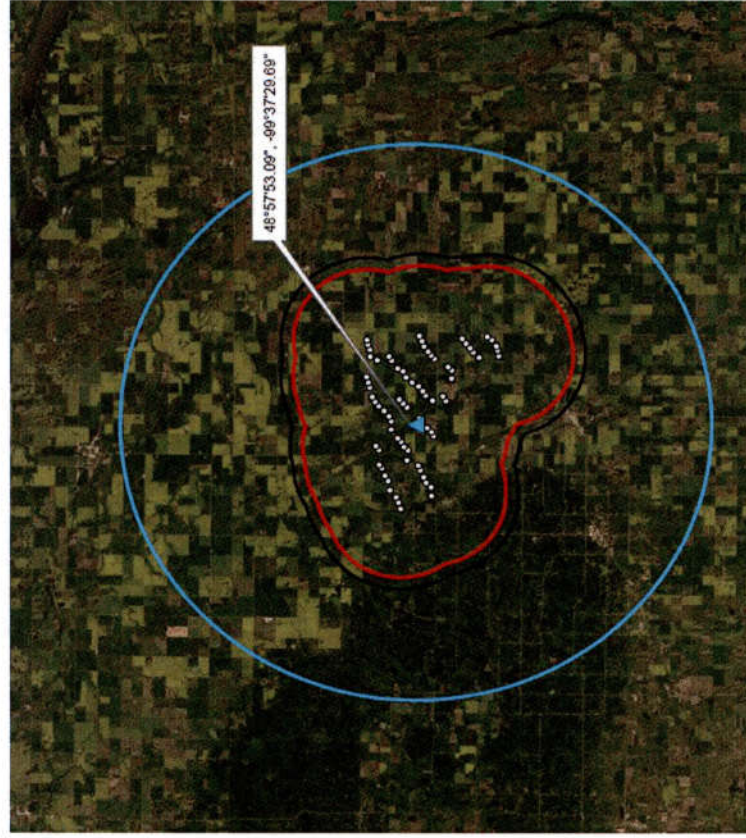
Border Winds Facility



- Location: Rollete County, north of Rolla, ND
- Commercial Operation: Dec. 2015
- Wind Farm Capacity: 150 MW
- No. of Turbines: 75
- Turbine Type: Vestas V100-2.0MW
- 2020 Wind Capacity: 51 percent



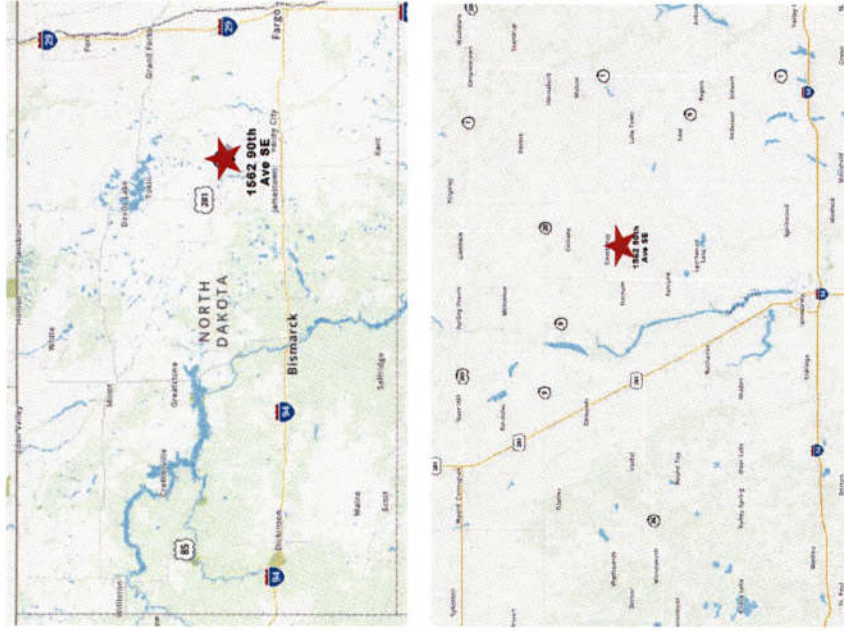
Border Winds ADLS Project Scope



- Vendor: DeTect, Inc.
- 1 X 80-foot-high radar tower
- 55 FAA Lights with LCM
- Access Road
- Equipment Compound
- Fiber Optics/Power
- Approx. 9 months

* LCM (Light Control Modules)

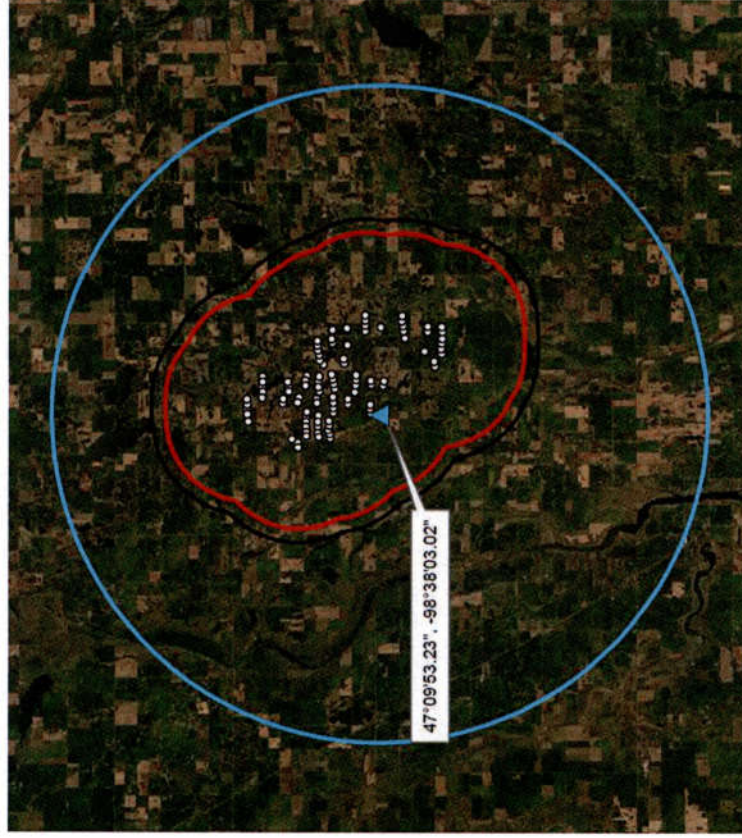
Courtenay Wind Facility



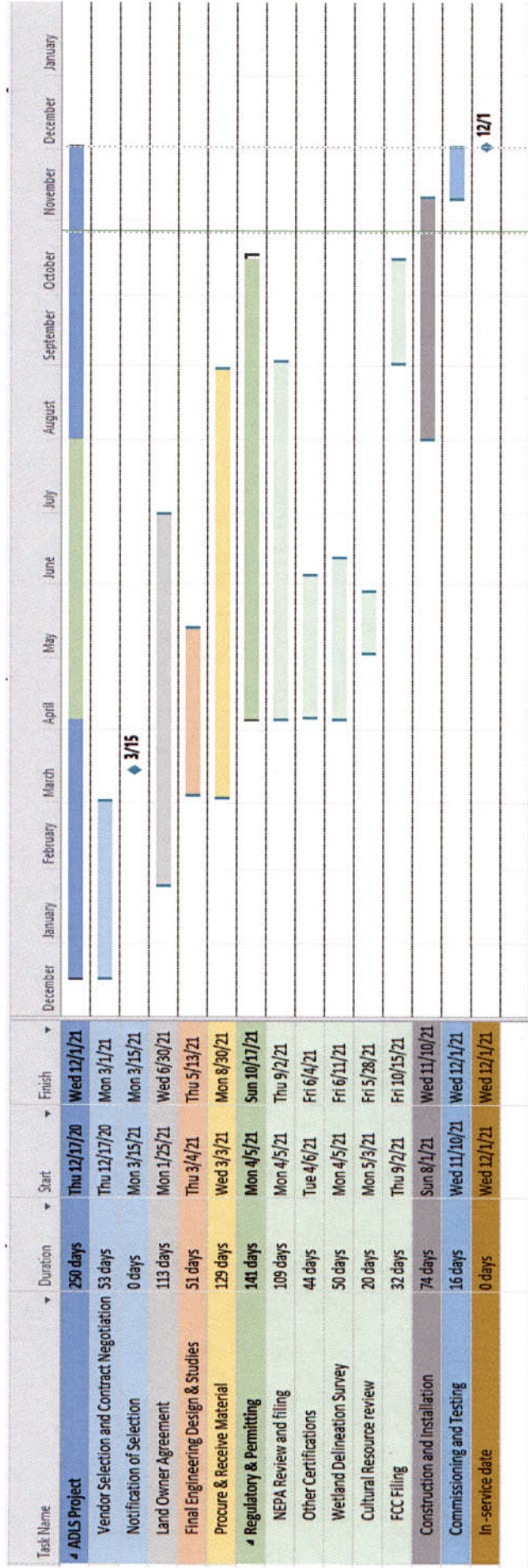
- Location: Stutsman County, south of Courtenay, ND
- Commercial Operation: Dec. 2016
- Wind Farm Capacity: 200 MW
- No. of Turbines: 100
- Turbine Type: Vestas V100-2.0MW
- 2020 Capacity Factor: 41 percent

Courtenay ADLS Project Scope

- Vendor: DeTect, Inc.
- 1 x 50-foot-high radar tower
- 63 LCMs
- Access Road
- Equipment Compound
- Fiber Optics/Power
- Approx. 9 months



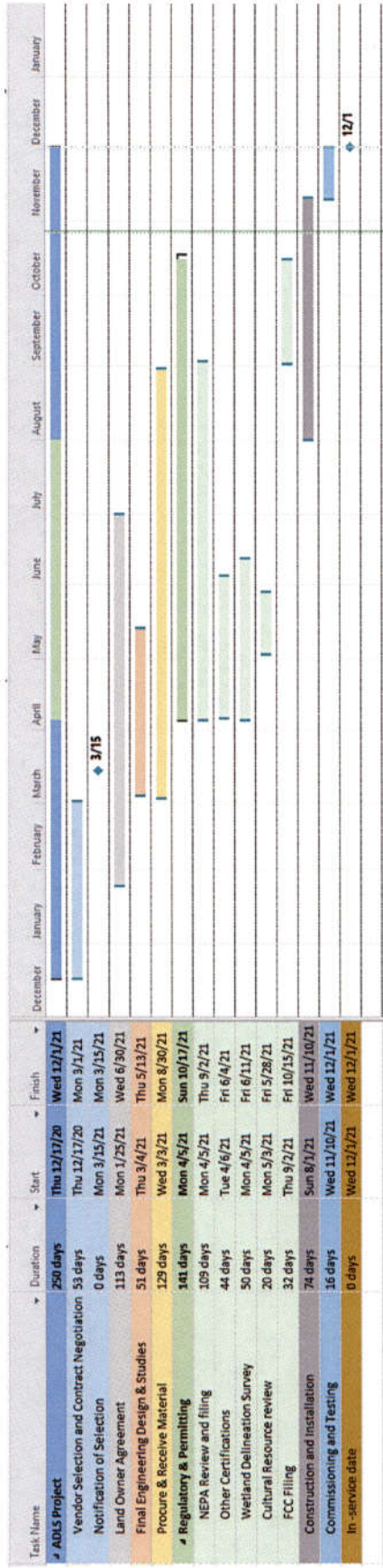
Original Schedule



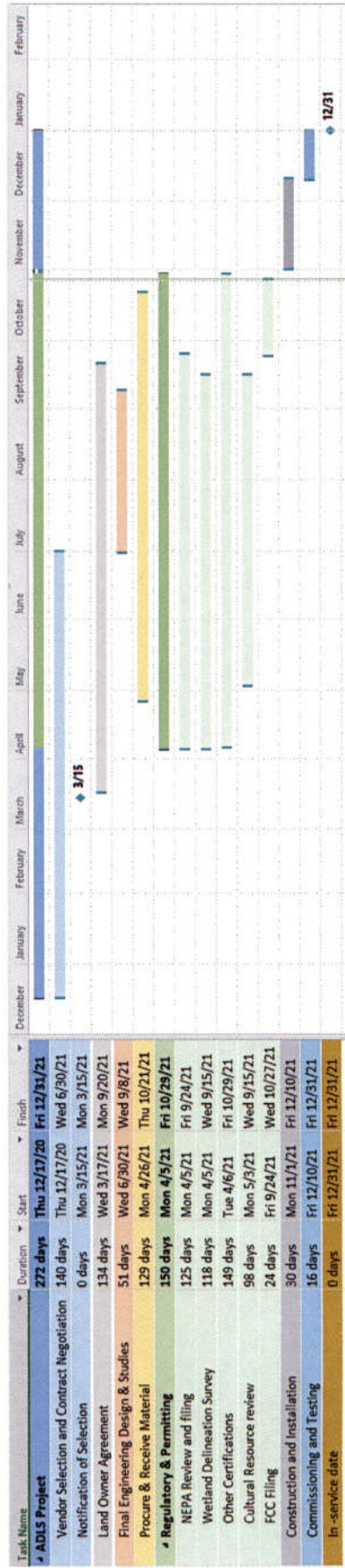
*Original schedule assumed for both projects, assumed to be constructed in parallel

Schedule Comparison (Border Winds)

Original

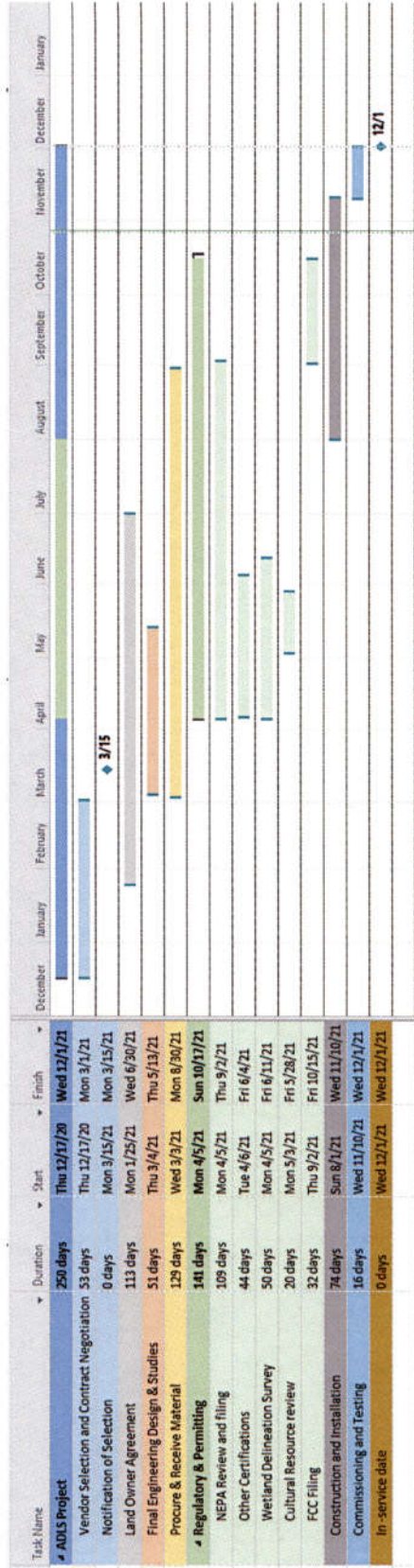


Updated

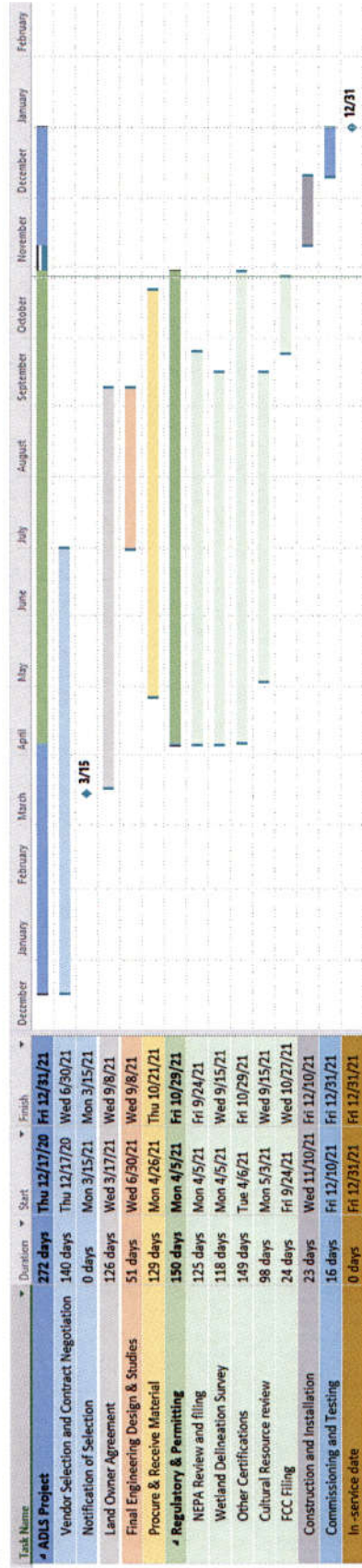


Schedule Comparison (Courtenay)

Original



Updated



Reasons for Extension

- Landowner concerns with radar/access road location
 - Delayed NEPA review
 - Delayed construction start date
- Supply chain concerns
 - Transformer shortage
 - COVID-19 pandemic affected the shipments
- Labor shortages
- Cold/wet weather is a concern