



**NST Express Pipeline - Exclusion and Avoidance Area**

- Yellowstone River HDD
- 200-foot Corridor
- Section Boundary
- ⊕ Valve Location
- ▭ Proposed Facility Location
- ▭ Township/Range Boundary
- Proposed Route
- ▭ Yellowstone River
- Existing Road

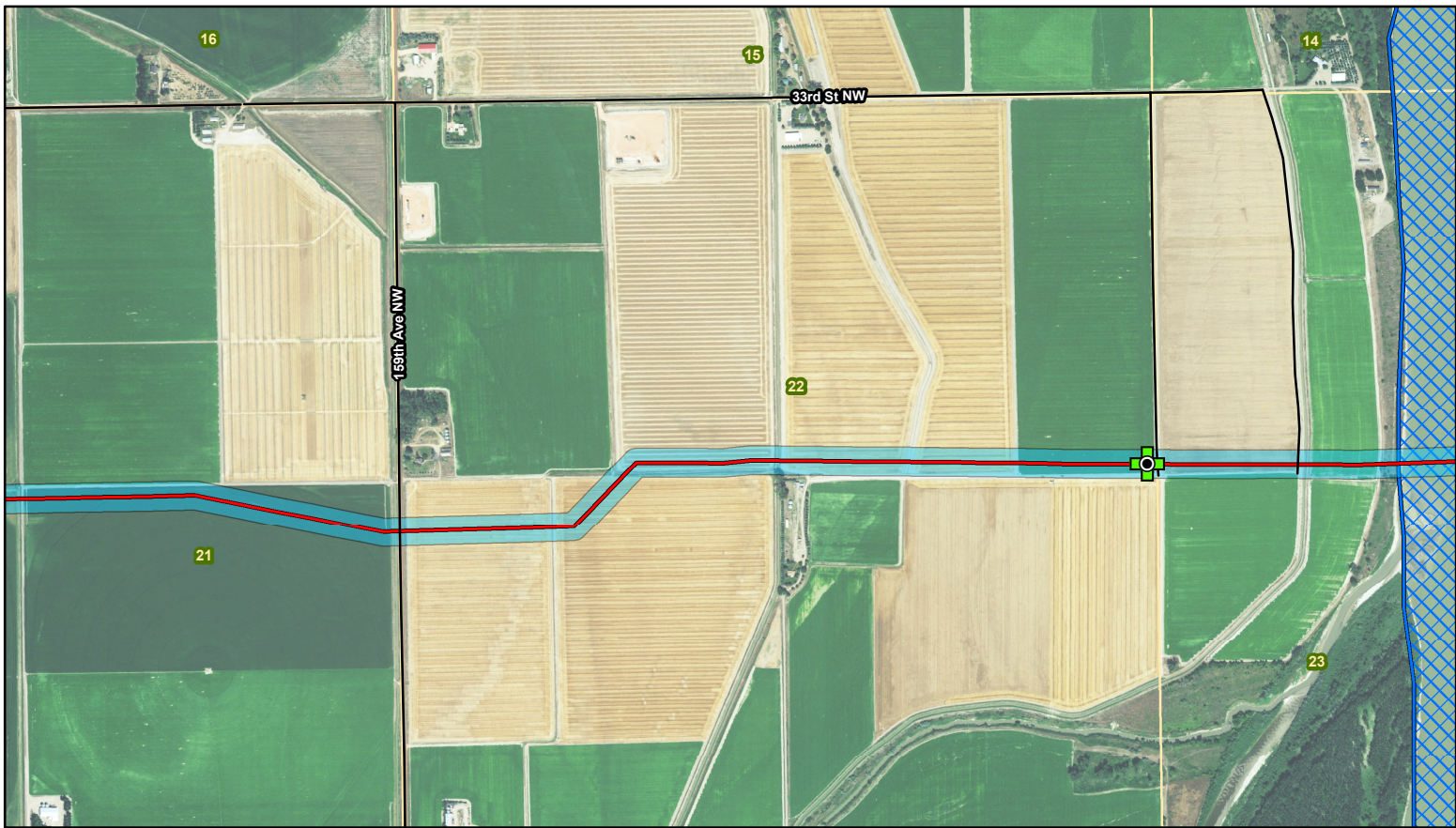
*\*\*Disclaimer - Due to the sensitive nature of cultural resources, we are unable to illustrate the avoidance areas in this figure.*

**SWCA**  
 ENVIRONMENTAL CONSULTANTS  
 116 North 4th Street  
 Suite 200  
 Bismarck, ND 58501  
 Phone: 701.258.6622  
 Fax: 701.258.5957  
 www.swca.com  
 Page 1 of 11

0 0.25 0.5  
 Kilometers  
 0 0.25 0.5  
 Miles

Base Map: 2014 Aerial Imagery  
 Source: USDA/FSA - Aerial Photography Field Office  
 Quadrangle: Fairview (1995),  
 Township/Range: T. 151N, R. 104W

McKenzie County, North Dakota  
 Projection: NAD 1983 UTM Zone 13N



**NST Express Pipeline - Exclusion and Avoidance Area**

- Yellowstone River HDD
- Valve Location
- Proposed Route
- Existing Road
- 200-foot Corridor
- Proposed Facility Location
- Yellowstone River
- Section Boundary
- Township/Range Boundary

\*\*Disclaimer - Due to the sensitive nature of cultural resources, we are unable to illustrate the avoidance areas in this figure.

**SWCA**  
 ENVIRONMENTAL CONSULTANTS  
 116 North 4th Street  
 Suite 200  
 Bismarck, ND 58501  
 Phone: 701.258.6622  
 Fax: 701.258.5957  
 www.swca.com  
 Page 2 of 11

Kilometers  
0 0.25 0.5

Miles  
0 0.25 0.5

Base Map: 2014 Aerial Imagery  
 Source: USDA/FSA - Aerial Photography Field Office  
 Quadrangle: Dore (1991),  
 Township/Range: T. 151N, R. 104W

McKenzie County, North Dakota  
 Projection: NAD 1983 UTM Zone 13N



**NST Express Pipeline - Exclusion and Avoidance Area**

- Yellowstone River HDD
- ✚ Valve Location
- Proposed Route
- Existing Road
- ▭ 200-foot Corridor
- ▭ Proposed Facility Location
- ▭ Yellowstone River
- ▭ Section Boundary
- ▭ Township/Range Boundary

\*\*Disclaimer - Due to the sensitive nature of cultural resources, we are unable to illustrate the avoidance areas in this figure.

**SWCA**  
 ENVIRONMENTAL CONSULTANTS  
 116 North 4th Street  
 Suite 200  
 Bismarck, ND 58501  
 Phone: 701.258.6622  
 Fax: 701.258.5957  
 www.swca.com  
 Page 3 of 11

Kilometers

Miles

Base Map: 2014 Aerial Imagery  
 Source: USDA/FSA - Aerial Photography Field Office  
 Quadrangle: Buford (1976)  
 Township/Range: T. 151N, R. 104W &  
 T. 151N, R. 103W  
 McKenzie County, North Dakota

Projection: NAD 1983 UTM Zone 13N



**NST Express Pipeline - Exclusion and Avoidance Area**

- Yellowstone River HDD
- ⊕ Valve Location
- Proposed Route
- Existing Road
- 200-foot Corridor
- ▭ Proposed Facility Location
- ▭ Yellowstone River
- ▭ Section Boundary
- ▭ Township/Range Boundary

\*\*Disclaimer - Due to the sensitive nature of cultural resources, we are unable to illustrate the avoidance areas in this figure.

**SWCA**  
 ENVIRONMENTAL CONSULTANTS  
 116 North 4th Street  
 Suite 200  
 Bismarck, ND 58501  
 Phone: 701.258.6622  
 Fax: 701.258.5957  
 www.swca.com  
 Page 4 of 11

0 0.25 0.5  
 Kilometers

0 0.25 0.5  
 Miles

Base Map: 2014 Aerial Imagery  
 Source: USDA/FSA - Aerial Photography Field Office  
 Quadrangle: Buford (1976)  
 Township/Range: T. 151N, R. 103W

McKenzie County, North Dakota  
 Projection: NAD 1983 UTM Zone 13N



**NST Express Pipeline - Exclusion and Avoidance Area**

- Yellowstone River HDD
- ⊕ Valve Location
- Proposed Route
- Existing Road
- 200-foot Corridor
- ▭ Proposed Facility Location
- ▨ Yellowstone River
- ▭ Section Boundary
- ▭ Township/Range Boundary

\*\*Disclaimer - Due to the sensitive nature of cultural resources, we are unable to illustrate the avoidance areas in this figure.

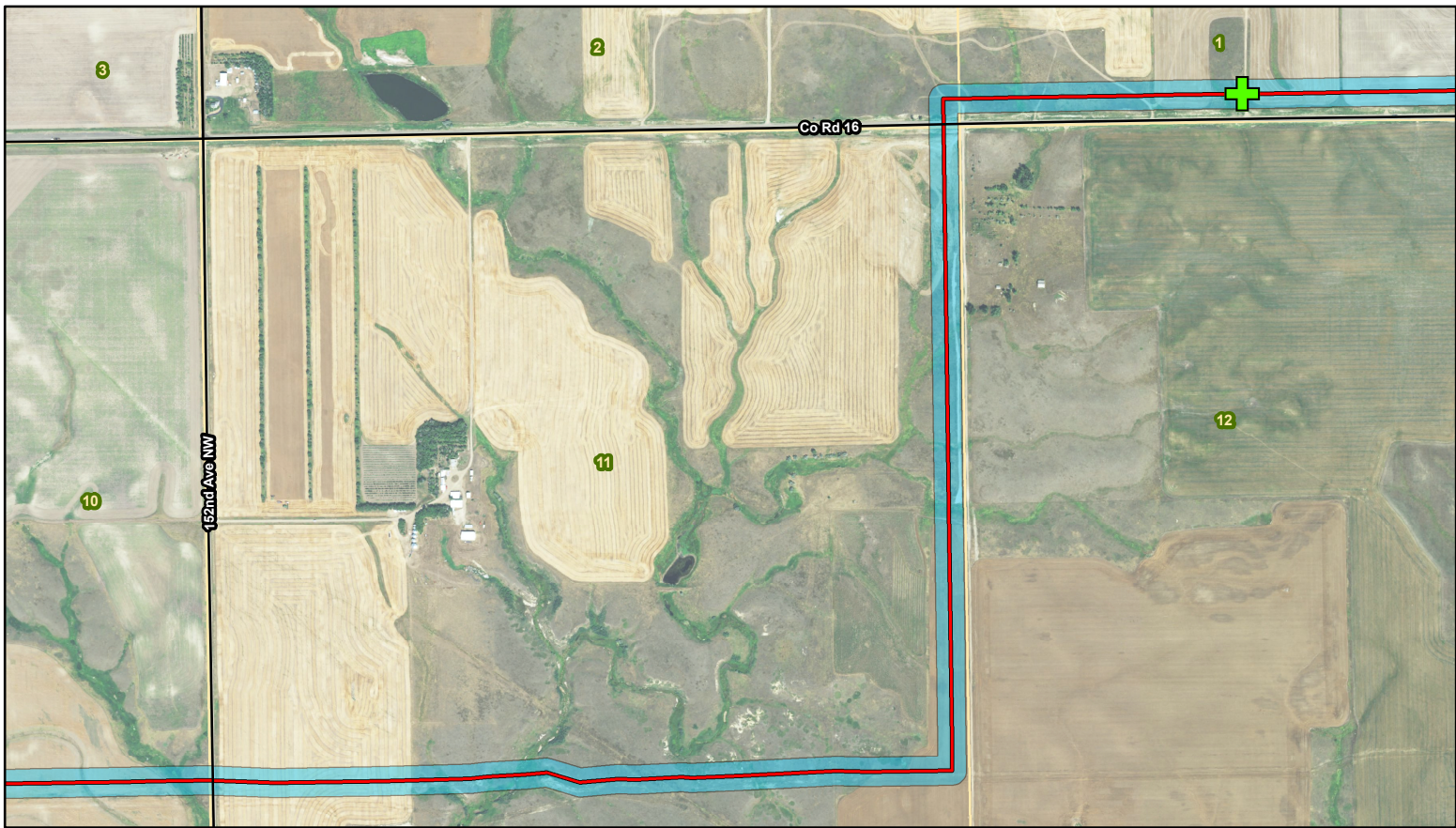
**SWCA**  
 ENVIRONMENTAL CONSULTANTS  
 116 North 4th Street  
 Suite 200  
 Bismarck, ND 58501  
 Phone: 701.258.6622  
 Fax: 701.258.5957  
 www.swca.com  
 Page 5 of 11

Kilometers  
 0 — 0.25 — 0.5  
 Miles  
 0 — 0.25 — 0.5

Base Map: 2014 Aerial Imagery  
 Source: USDA/FSA - Aerial Photography Field Office  
 Quadrangle: Buford (1976),  
 Township/Range: T. 151N, R. 103W

McKenzie County, North Dakota

Projection: NAD 1983 UTM Zone 13N



**NST Express Pipeline - Exclusion and Avoidance Area**

- Yellowstone River HDD
- ⊕ Valve Location
- Proposed Route
- Existing Road
- 200-foot Corridor
- Proposed Facility Location
- Yellowstone River
- Section Boundary
- Township/Range Boundary

\*\*Disclaimer - Due to the sensitive nature of cultural resources, we are unable to illustrate the avoidance areas in this figure.

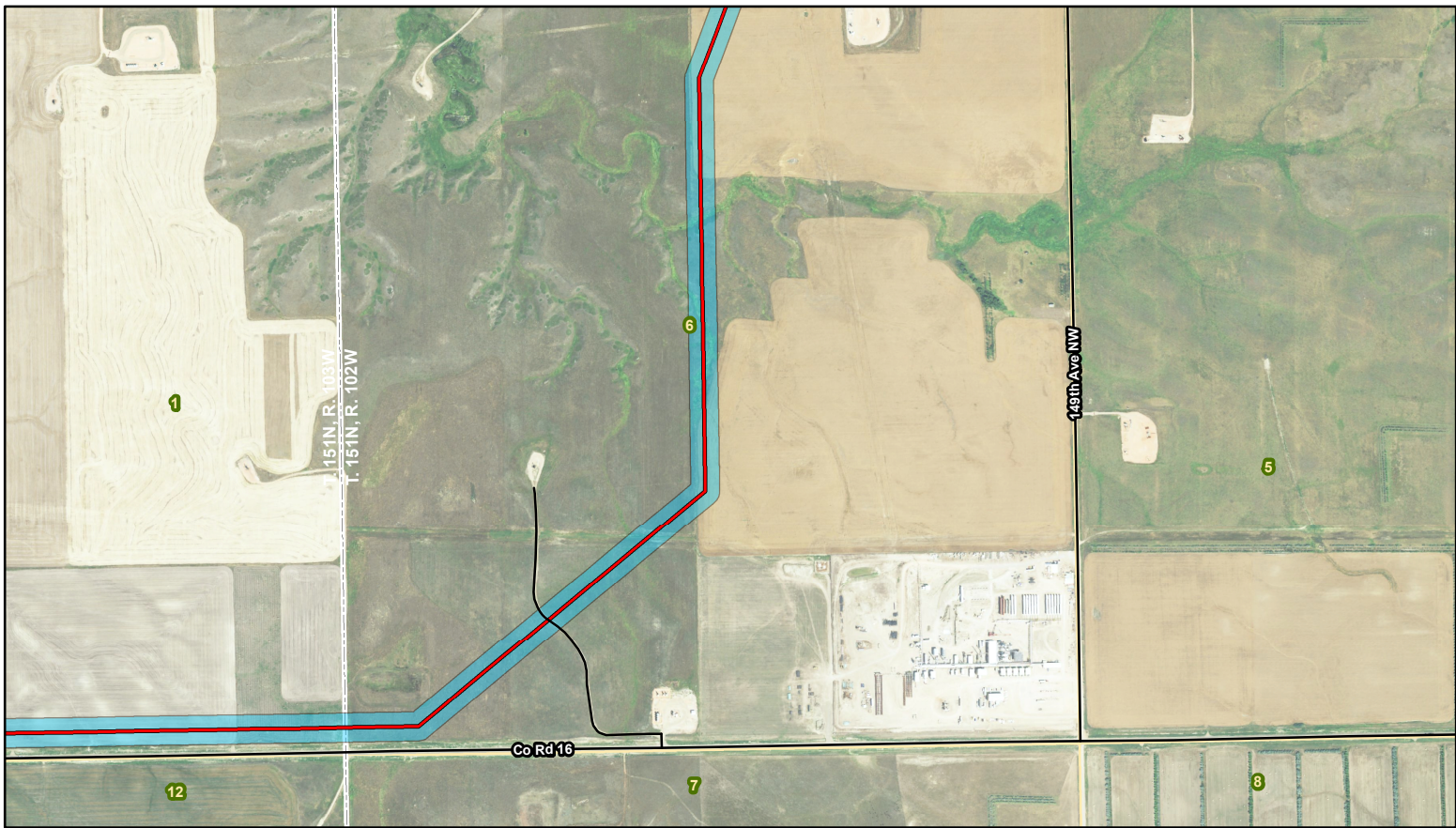
**SWCA**  
 ENVIRONMENTAL CONSULTANTS  
 116 North 4th Street  
 Suite 200  
 Bismarck, ND 58501  
 Phone: 701.258.6622  
 Fax: 701.258.5957  
 www.swca.com  
 Page 6 of 11

0 0.25 0.5  
 Kilometers

0 0.25 0.5  
 Miles

Base Map: 2014 Aerial Imagery  
 Source: USDA/FSA - Aerial Photography Field Office  
 Quadrangle: Cartwright NE (1991)  
 Township/Range: T. 151N, R. 103W

McKenzie County, North Dakota  
 Projection: NAD 1983 UTM Zone 13N



**NST Express Pipeline - Exclusion and Avoidance Area**

- Yellowstone River HDD
- ⊕ Valve Location
- Proposed Route
- Existing Road
- ▭ 200-foot Corridor
- ▭ Proposed Facility Location
- ▭ Yellowstone River
- ▭ Section Boundary
- ▭ Township/Range Boundary

**\*\*Disclaimer - Due to the sensitive nature of cultural resources, we are unable to illustrate the avoidance areas in this figure.**

**SWCA**  
 ENVIRONMENTAL CONSULTANTS  
 116 North 4th Street  
 Suite 200  
 Bismarck, ND 58501  
 Phone: 701.258.6622  
 Fax: 701.258.5957  
 www.swca.com  
 Page 7 of 11

0 0.25 0.5  
 Kilometers  
 0 0.25 0.5  
 Miles

Base Map: 2014 Aerial Imagery  
 Source: USDA/FSA - Aerial Photography Field Office  
 Quadrangle: Cartwright NE (1991)  
 Township/Range: T. 151N, R. 103W &  
 T. 151N, R. 102W  
 McKenzie County, North Dakota

Projection: NAD 1983 UTM Zone 13N



**NST Express Pipeline - Exclusion and Avoidance Area**

- Yellowstone River HDD
- ⊕ Valve Location
- Proposed Route
- Existing Road
- 200-foot Corridor
- ▭ Proposed Facility Location
- ▨ Yellowstone River
- ▭ Section Boundary
- ▭ Township/Range Boundary

\*\*Disclaimer - Due to the sensitive nature of cultural resources, we are unable to illustrate the avoidance areas in this figure.

**SWCA**  
 ENVIRONMENTAL CONSULTANTS  
 116 North 4th Street  
 Suite 200  
 Bismarck, ND 58501  
 Phone: 701.258.6622  
 Fax: 701.258.5957  
 www.swca.com  
 Page 8 of 11

0 0.25 0.5  
 Kilometers  
 0 0.25 0.5  
 Miles

Base Map: 2014 Aerial Imagery  
 Source: USDA/FSA - Aerial Photography Field Office  
 Quadrangle: Cartwright NE (1991),  
 Township/Range: T. 151N, R. 102W &  
 T. 152N, R. 102W  
 McKenzie County, North Dakota

Projection: NAD 1983 UTM Zone 13N



**NST Express Pipeline - Exclusion and Avoidance Area**

- Yellowstone River HDD
- ⊕ Valve Location
- Proposed Route
- Existing Road
- 200-foot Corridor
- Proposed Facility Location
- Yellowstone River
- Section Boundary
- Township/Range Boundary

**\*\*Disclaimer - Due to the sensitive nature of cultural resources, we are unable to illustrate the avoidance areas in this figure.**

**SWCA**  
 ENVIRONMENTAL CONSULTANTS  
 116 North 4th Street  
 Suite 200  
 Bismarck, ND 58501  
 Phone: 701.258.6622  
 Fax: 701.258.5957  
 www.swca.com  
 Page 9 of 11

Kilometers

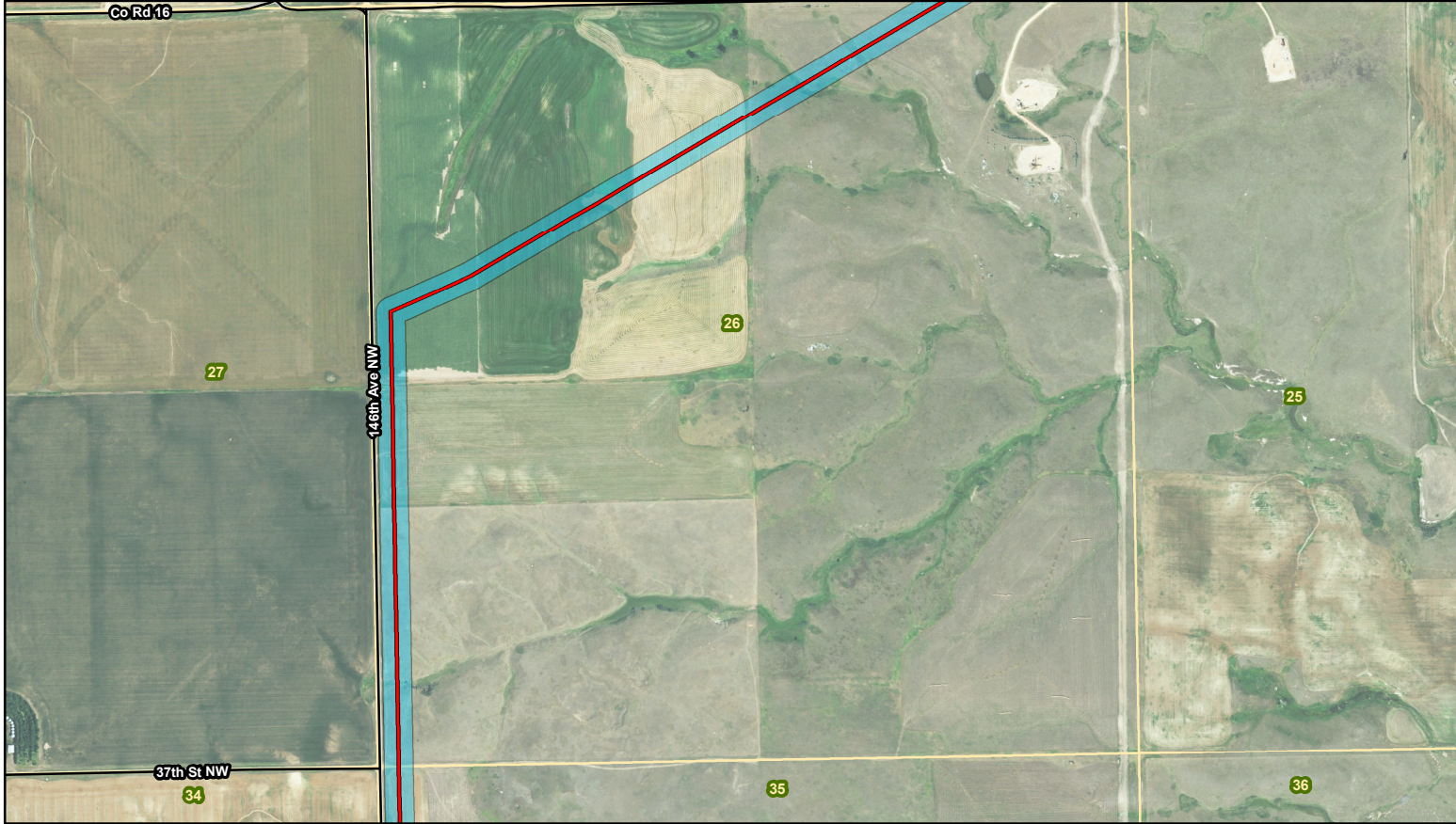
0 0.25 0.5

Miles





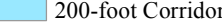
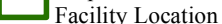

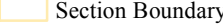
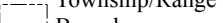
0 0.25 0.5

Base Map: 2014 Aerial Imagery  
 Source: USDA/FSA - Aerial Photography Field Office  
 Quadrangle: Camp Creek West (1978)  
 Township/Range: T. 152N, R. 102W

McKenzie County, North Dakota  
 Projection: NAD 1983 UTM Zone 13N

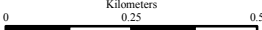


### NST Express Pipeline - Exclusion and Avoidance Area

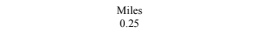
-  Yellowstone River HDD
-  Valve Location
-  Proposed Route
-  Existing Road
-  200-foot Corridor
-  Proposed Facility Location
-  Yellowstone River
-  Section Boundary
-  Township/Range Boundary

**\*\*Disclaimer - Due to the sensitive nature of cultural resources, we are unable to illustrate the avoidance areas in this figure.**

**SWCA**  
 ENVIRONMENTAL CONSULTANTS  
 116 North 4th Street  
 Suite 200  
 Bismarck, ND 58501  
 Phone: 701.258.6622  
 Fax: 701.258.5957  
 www.swca.com  
 Page 10 of 11




Kilometers  
0 0.25 0.5

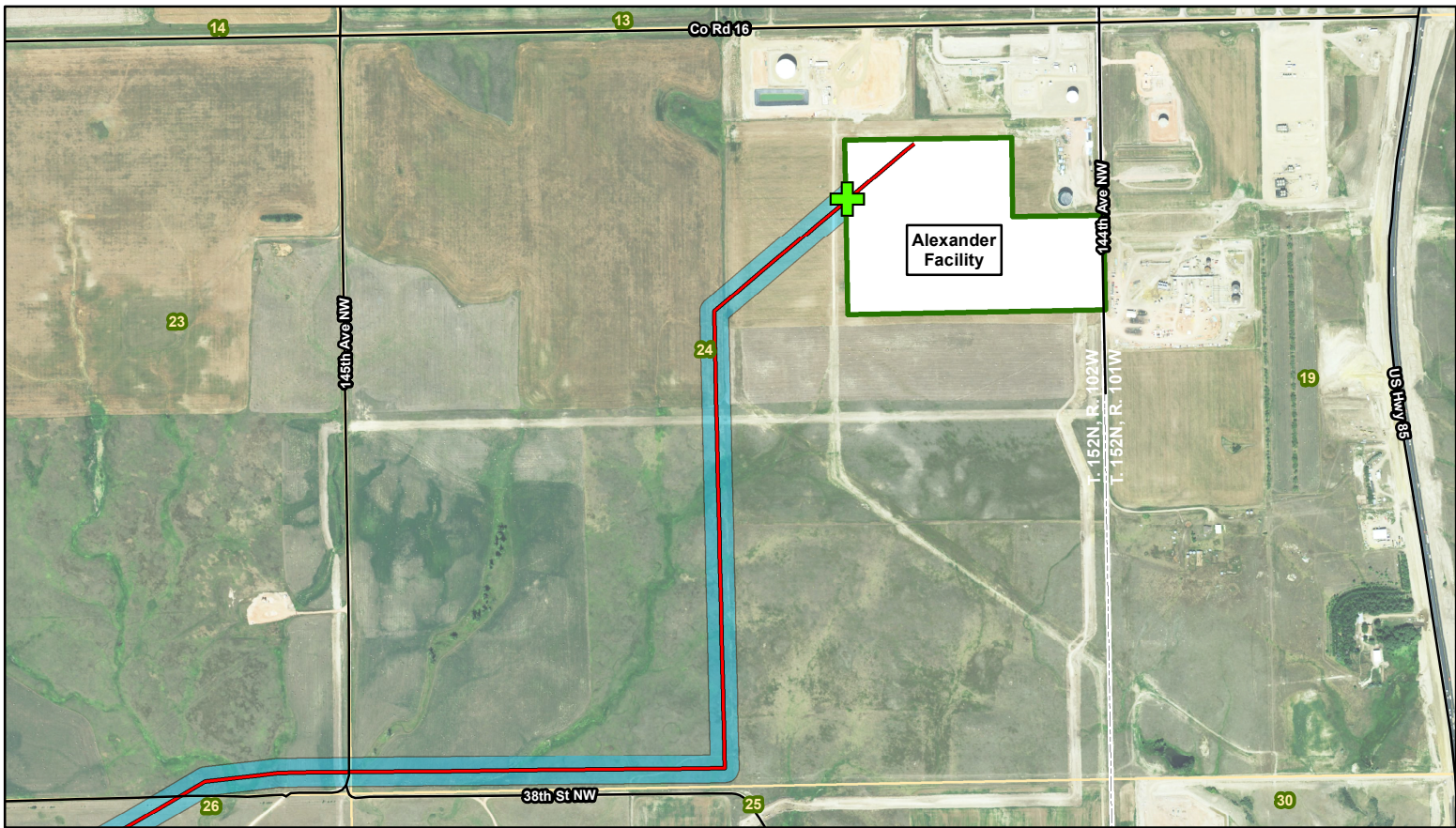


Miles  
0 0.25 0.5

Base Map: 2014 Aerial Imagery  
 Source: USDA/FSA - Aerial Photography Field Office  
 Quadrangle: Camp Creek West (1978)  
 Township/Range: T. 152N, R. 102W

McKenzie County, North Dakota  
 Projection: NAD 1983 UTM Zone 13N





**NST Express Pipeline - Exclusion and Avoidance Area**

- Yellowstone River HDD
- ⊕ Valve Location
- Proposed Route
- Existing Road
- 200-foot Corridor
- ▭ Proposed Facility Location
- ▨ Yellowstone River
- ▭ Section Boundary
- ▭ Township/Range Boundary

\*\*Disclaimer - Due to the sensitive nature of cultural resources, we are unable to illustrate the avoidance areas in this figure.

**SWCA**  
 ENVIRONMENTAL CONSULTANTS  
 116 North 4th Street  
 Suite 200  
 Bismarck, ND 58501  
 Phone: 701.258.6622  
 Fax: 701.258.5957  
 www.swca.com  
 Page 11 of 11

Kilometers  
 0 — 0.25 — 0.5  
 Miles  
 0 — 0.25 — 0.5

Base Map: 2014 Aerial Imagery  
 Source: USDA/FSA - Aerial Photography Field Office  
 Quadrangle: Camp Creek West (1978)  
 Township/Range: T. 152N, R. 102W

McKenzie County, North Dakota  
 Projection: NAD 1983 UTM Zone 13N