



- NST Express Pipeline**
- Yellowstone River HDD
 - + Valve Location
 - + Abandoned Valve Location

- Proposed Route
- Existing Road
- Proposed Facility Location
- Surface Tract
- Proposed Corridor

- Yellowstone River
- Township/Range Boundary
- Section Boundary

SWCA
 ENVIRONMENTAL CONSULTANTS
 116 North 4th Street
 Suite 200
 Bismarck, ND 58501
 Phone: 701.258.6622
 Fax: 701.258.5957
 www.swca.com
 Page 1 of 11

Base Map: 2014 Aerial Imagery
 Source: USDA/FSA - Aerial Photography Field Office
 Quadrangle: Fairview (1995), Dore (1991)
 Township/Range: T. 151N, R. 104W

McKenzie County, North Dakota
 Projection: NAD 1983 UTM Zone 13N

0 0.25 0.5

Miles

0 0.25 0.5

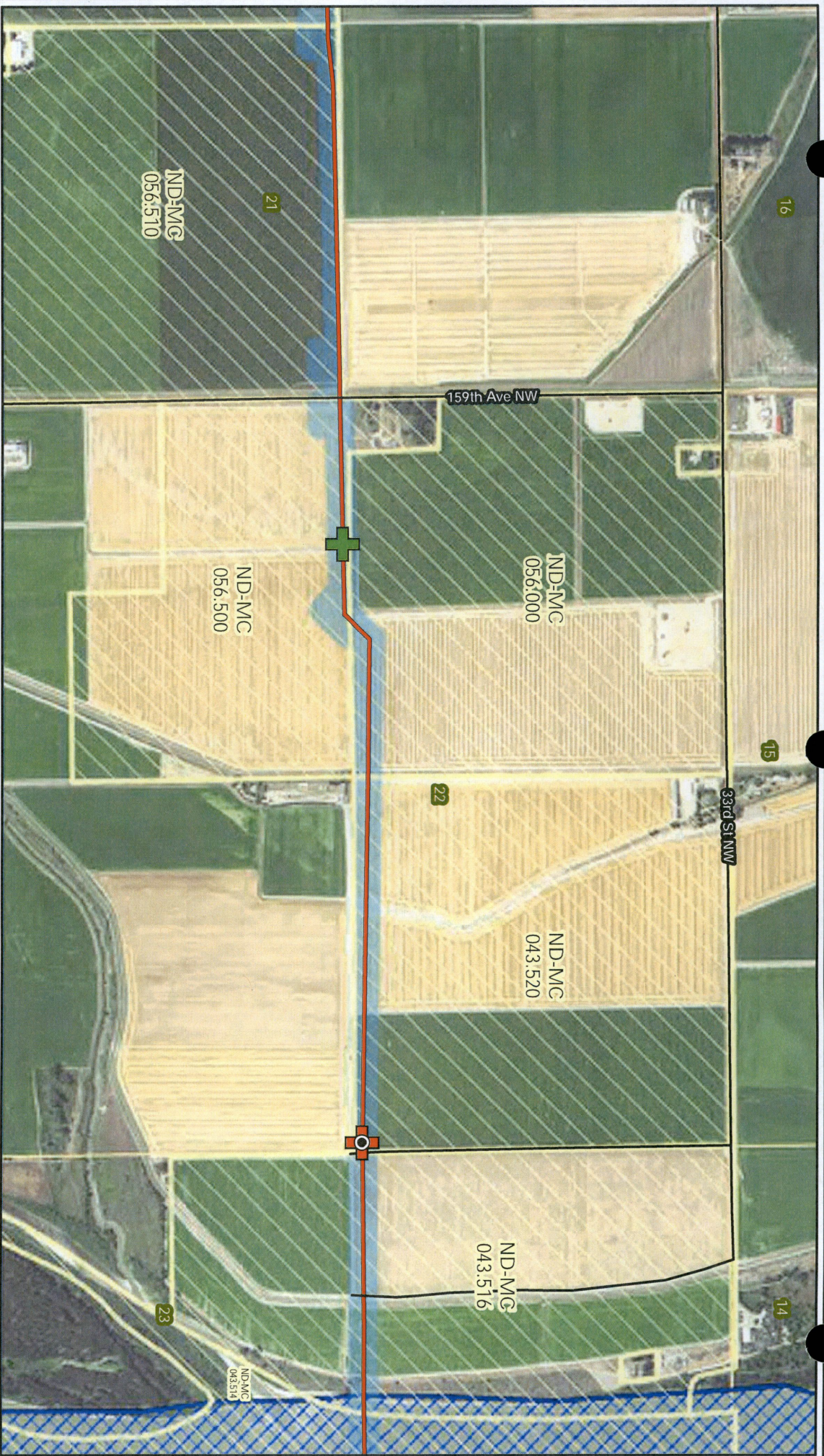
Kilometers

0 0.25 0.5

Miles

0 0.25 0.5

Kilometers



- Proposed Route
- Existing Road
- Valve Location
- Abandoned Valve Location
- Yellowstone River
- River HDD
- Proposed Facility Location
- Surface Tract
- Proposed Corridor

- Yellowstone River
- Township/Range Boundary
- Section Boundary

SWCA
 ENVIRONMENTAL CONSULTANTS
 116 North 4th Street
 Suite 200
 Bismarck, ND 58501
 Phone: 701.258.6622
 Fax: 701.258.5957
 www.swca.com
 Page 2 of 11

Base Map: 2014 Aerial Imagery
 Source: USDA/FS - Aerial Photography Field Office
 Quadangle: Dore (1991), Buford (1976)
 Township/Range: T. 151N, R. 104W

Mckenzie County, North Dakota
 Projection: NAD 1983 UTM Zone 13N

0 0.25 0.5
 Kilometers

0 0.25 0.5
 Miles

0 0.25 0.5
 Kilometers

0 0.25 0.5
 Miles

N
 E
 S
 W



- NST Express Pipeline
- Yellowstone River HDD
- Valve Location
- Abandoned Valve Location

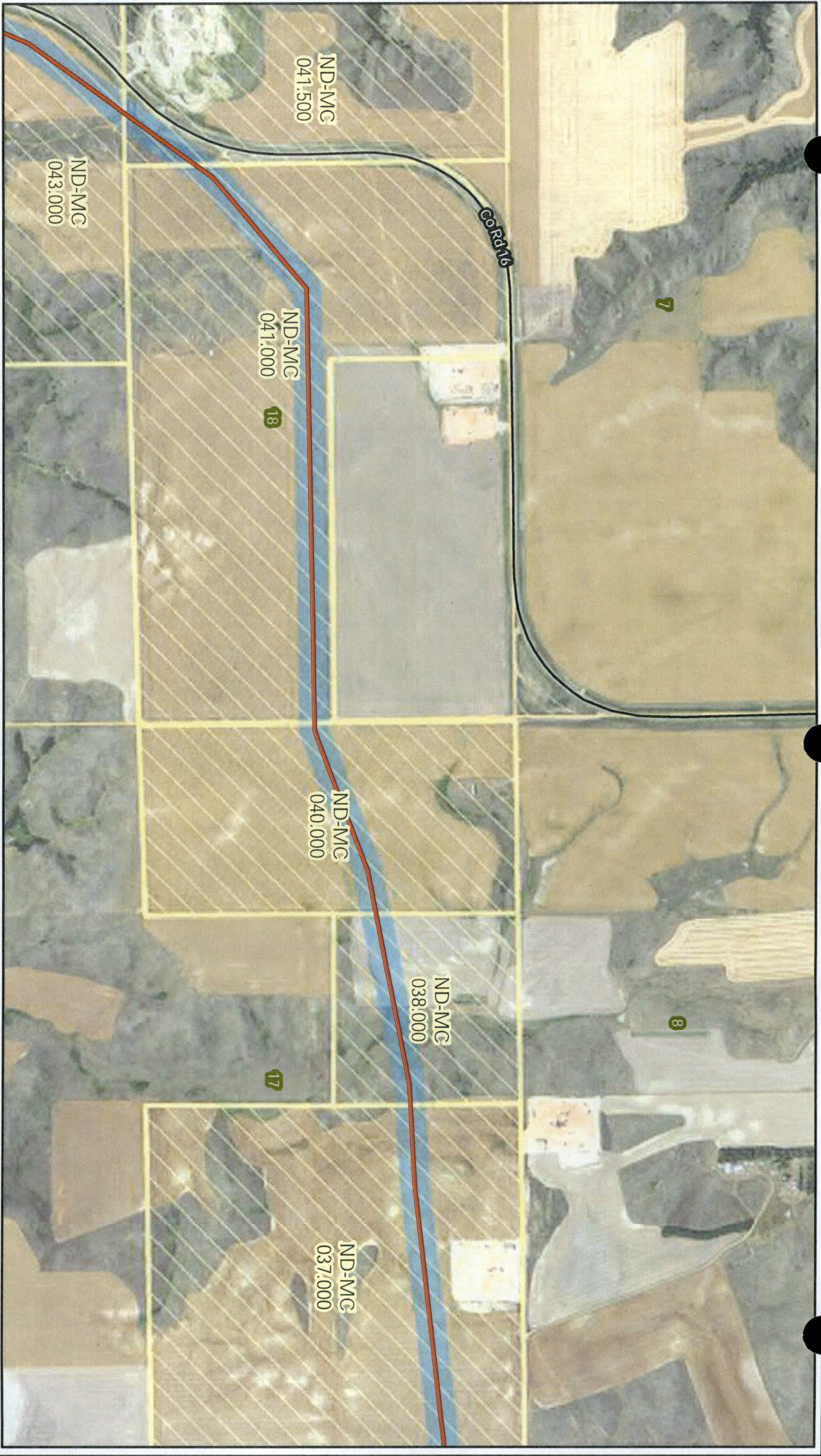
- Proposed Route
- Existing Road
- Proposed Facility Location
- Surface Tract
- Proposed Corridor

- Yellowstone River
- Township/Range Boundary
- Section Boundary

SWCA
 ENVIRONMENTAL CONSULTANTS
 116 North 4th Street
 Suite 200
 Bismarck, ND 58501
 Phone: 701.258.6622
 Fax: 701.258.5957
 www.swca.com
 Page 3 of 11

0 0.25 0.5 Kilometers
 0 0.25 0.5 Miles

Base Map: 2014 Aerial Imagery
 Source: USDA/FSA - Aerial Photography Field Office
 Quadrangle: Burford (1976)
 Township/Range: T. 151N, R. 104W & T. 151N, R. 103W
 McKenzie County, North Dakota
 Projection: NAD 1983 UTM Zone 13N



- Yellowstone Pipeline
- River HDD
- Valve Location
- Abandoned Valve Location

- Proposed Route
- Existing Road
- Proposed Facility Location
- Surface Tract
- Proposed Corridor

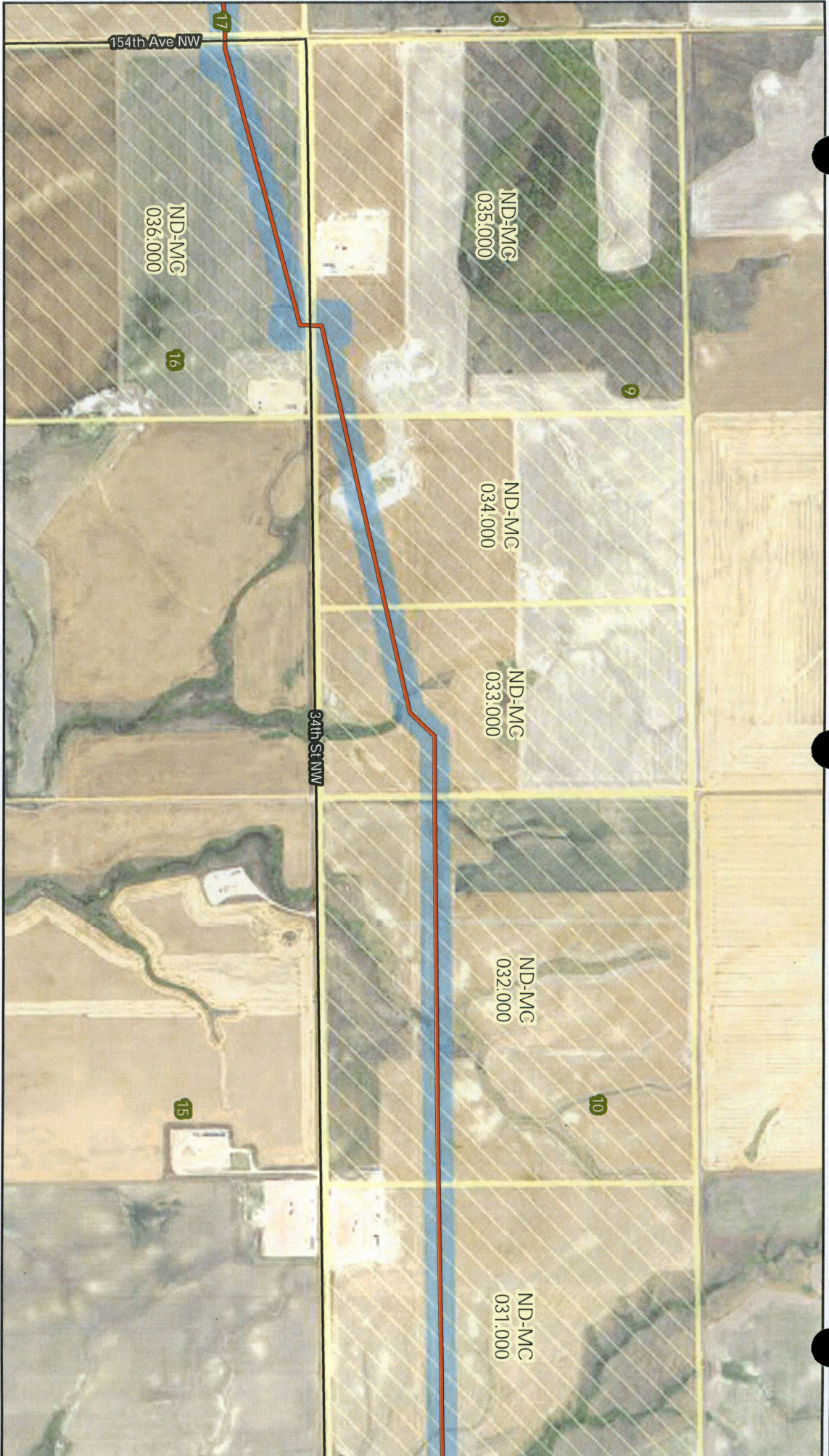
- Yellowstone River
- Township/Range Boundary
- Section Boundary

SWCA
 ENVIRONMENTAL CONSULTANTS
 116 North 4th Street
 Suite 200
 Bismarck, ND 58501
 Phone: 701.258.6622
 Fax: 701.258.5957
 www.swca.com
 Page 4 of 11

0 0.25 0.5 0.5
 Kilometers
 0 0.25 0.5
 Miles

Base Map: 2014 Aerial Imagery
 Source: USDA/SA - Aerial Photography Field Office
 Quadrangle: Burford (1976)
 Township/Range: T. 151N, R. 103W

McKenzie County, North Dakota
 Projection: NAD 1983 UTM Zone 13N



- NST Express Pipeline
- Yellowstone River
- River HDD
- Abandoned Valve Location
- Valve Location

- Proposed Route
- Existing Road
- Proposed Facility Location
- Surface Tract
- Proposed Corridor

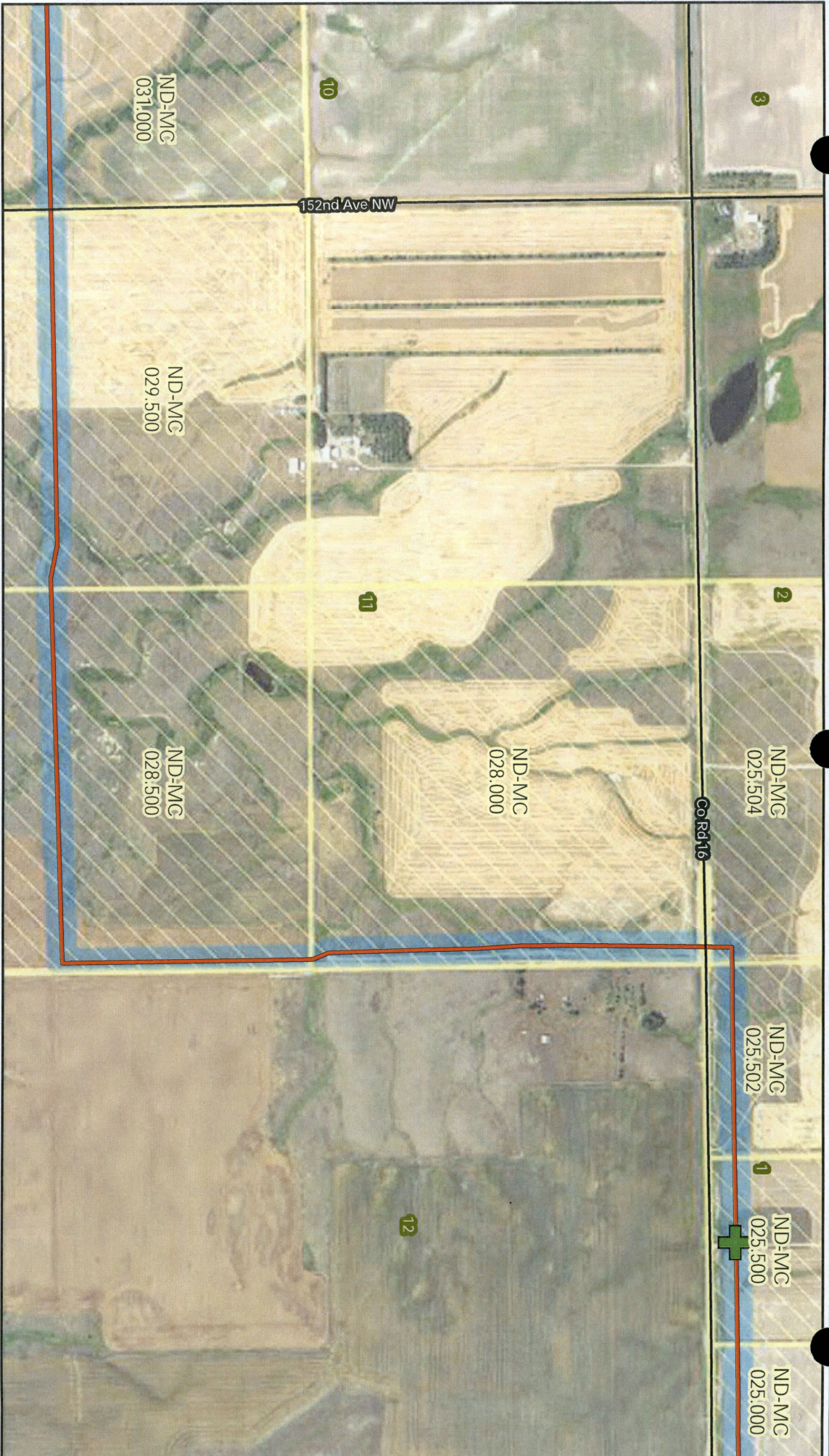
- Yellowstone River
- Township/Range Boundary
- Section Boundary

SWCA
 ENVIRONMENTAL CONSULTANTS
 116 North 4th Street
 Suite 200
 Bismarck, ND 58501
 Phone: 701.258.6622
 Fax: 701.258.5957
 www.swca.com
 Page 5 of 11

0 0.25 0.5 0.5
 Kilometers
 0 0.25 0.5
 Miles

Base Map: 2014 Aerial Imagery
 Source: USDA/SA - Aerial Photography Field Office
 Quadangle: Buford (1976), Cartwright NE (1991)
 Township/Range: T. 151N, R. 103W

McKenzie County, North Dakota
 Projection: NAD 1983 UTM Zone 13N



- Proposed Route
- Existing Road
- Valve Location
- Abandoned Valve Location
- Proposed Facility Location
- Proposed Corridor
- Yellowstone River
- Township/Range Boundary
- Section Boundary

- Yellowstone Express Pipeline
- Yellowstone River

SWCA
 ENVIRONMENTAL CONSULTANTS
 116 North 4th Street
 Suite 200
 Bismarck, ND 58501
 Phone: 701.258.6622
 Fax: 701.258.5957
 www.swca.com
 Page 6 of 11

0 0.25 0.5
 Kilometers

0 0.25 0.5
 Miles

Base Map: 2014 Aerial Imagery
 Source: USDA/SA - Aerial Photography Field Office
 Quadrangle: Cartwright NE (1991)
 Township/Range: T. 151N, R. 103W

McKenzie County, North Dakota
 Projection: NAD 1983 UTM Zone 13N



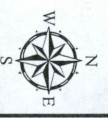
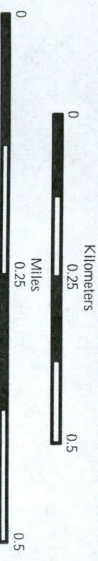
- Proposed Route
- Existing Road
- Proposed Facility Location
- Surface Tract
- Proposed Corridor

- Yellowstone River
- Yellowstone HDD
- Township/Range Boundary
- Section Boundary

- River HDD
- Valve Location
- Abandoned Valve Location

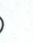











SWCA
 ENVIRONMENTAL CONSULTANTS
 116 North 4th Street
 Suite 200
 Bismarck, ND 58501
 Phone: 701.258.6622
 Fax: 701.258.5957
 www.swca.com
 Page 7 of 11

Base Map: 2014 Aerial Imagery
 Source: USDA/RS - Aerial Photography Field Office
 Quadrangle: Cartwright NE (1991)
 Township/Range: T. 151N, R. 103W & T. 151N, R. 102W
 McKenzie County, North Dakota
 Projection: NAD 1983 UTM Zone 13N





NST Express Pipeline

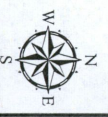
-  Yellowstone River
-  River HDD
-  Abandoned Valve Location
-  Valve Location
-  Proposed Route
-  Existing Road
-  Proposed Facility Location
-  Surface Tract
-  Proposed Corridor
-  Yellowstone River
-  Township/Range Boundary
-  Section Boundary

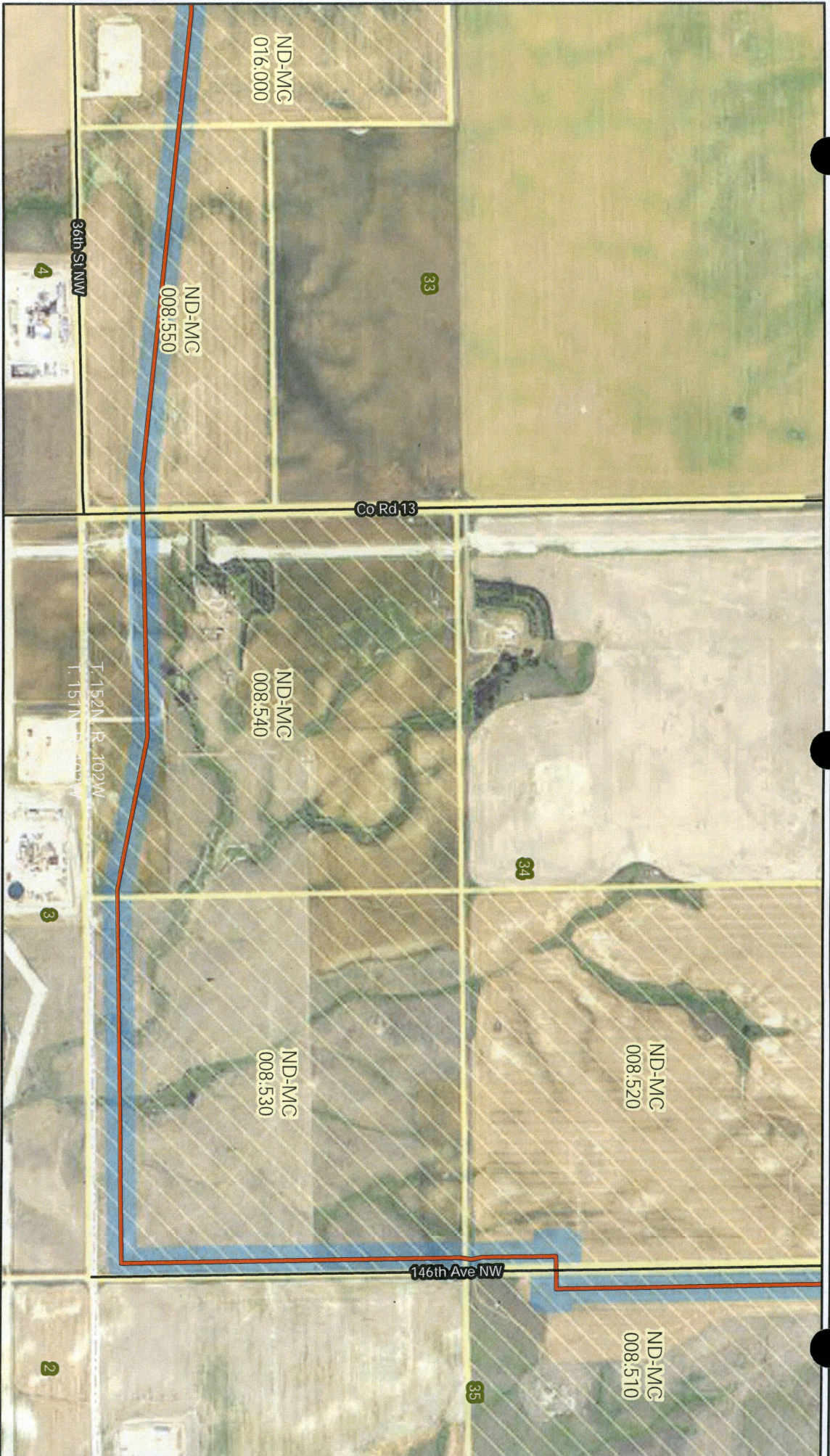


116 North 4th Street
 Suite 200
 Bismarck, ND 58501
 Phone: 701.258.6622
 Fax: 701.258.5957
 www.swca.com
 Page 8 of 11



Base Map: 2014 Aerial Imagery
 Source: USDA/SA - Aerial Photography Field Office
 Quadrangle: Cartwright NE (1991), Camp Creek West (1978)
 Township/Range: T. 151N, R. 102W & T. 152N, R. 102W
 McKenzie County, North Dakota
 Projection: NAD 1983 UTM Zone 13N





- NST Express Pipeline
- Yellowstone River HDD
 - + Valve Location
 - + Abandoned Valve Location

- Proposed Route
- Existing Road
- Proposed Facility Location
- Surface Tract
- Proposed Corridor

- Yellowstone River
- Township/Range Boundary
- Section Boundary

SWCA
 ENVIRONMENTAL CONSULTANTS
 116 North 4th Street
 Suite 200
 Bismarck, ND 58501
 Phone: 701.258.6622
 Fax: 701.258.5957
 www.swca.com
 Page 9 of 11

0 0.25 0.5 0.5
 Miles

0 0.25 0.5 0.5
 Kilometers

Base Map: 2014 Aerial Imagery
 Source: USDA/SA - Aerial Photography Field Office
 Quadrangle: Camp Creek West (1978)
 Township/Range: T. 152N, R. 102W

McKenzie County, North Dakota
 Projection: NAD 1983 UTM Zone 13N



Co. Rd.

37th St NW
ND-MC-008,520

146th Ave NW

ND-MC
008,510

ND-MC
008,500

ND-MC
008,000

ND-MC
007,000

35

36

- NST Express Pipeline
- Yellowstone River
 - River HDD
 - Valve Location
 - Abandoned Valve Location

- Proposed Route
- Existing Road
- Proposed Facility Location
- Surface Tract
- Proposed Corridor

- Yellowstone River
- Township/Range Boundary
- Section Boundary

SWCA
ENVIRONMENTAL CONSULTANTS
116 North 4th Street
Suite 200
Bismarck, ND 58501
Phone: 701.258.6622
Fax: 701.258.5957
www.swca.com
Page 10 of 11

0 0.25 0.5
0 0.25 0.5
Kilometers
Miles

Base Map: 2014 Aerial Imagery
Source: USDA/SA - Aerial Photography Field Office
Quadrangle: Camp Creek West (1978)
Township/Range: T. 152N, R. 102W

McKenzie County, North Dakota
Projection: NAD 1983 UTM Zone 13N



- NST Express Pipeline
- Yellowstone River
- River HDD
- Valve Location
- Abandoned Valve Location

- Proposed Route
- Existing Road
- Proposed Facility Location
- Surface Tract
- Proposed Corridor
- Yellowstone River
- Township/Range Boundary
- Section Boundary

SWCA
 ENVIRONMENTAL CONSULTANTS
 116 North 4th Street
 Suite 200
 Bismarck, ND 58501
 Phone: 701.258.6622
 Fax: 701.258.5957
 www.swca.com
 Page 11 of 11

0 0.25 0.5
 Miles

0 0.25 0.5
 Kilometers

Base Map: 2014 Aerial Imagery
 Source: USDA/FS - Aerial Photography Field Office
 Quadrangle: Camp Creek West (1978)
 Township/Range: T. 152N, R. 102W

Mckenzie County, North Dakota
 Projection: NAD 1983 UTM Zone 13N