

- NST Express Pipeline**
- Yellowstone River HDD
 - + Valve Location
 - + Abandoned Valve Location
 - Proposed Route
 - Original Route
 - Existing Road
 - Proposed Corridor
 - Original Corridor
 - Proposed Facility Location
 - Surface Tract
 - ▣ Yellowstone River
 - ▭ Township/Range Boundary
 - ▭ Section Boundary

SWCA
 ENVIRONMENTAL CONSULTANTS
 116 North 4th Street
 Suite 200
 Bismarck, ND 58501
 Phone: 701.258.6622
 Fax: 701.258.5957
 www.swca.com
 Page 1 of 11

Base Map: 2014 Aerial Imagery
 Source: USDA/FS - Aerial Photography Field Office
 Quadrangle: Fairview (1995), Dore (1991)
 Township/Range: T. 151N, R. 104W

Mckenzie County, North Dakota
 Projection: NAD 1983 UTM Zone 13N

0 0.25 0.5
 Kilometers

0 0.25 0.5
 Miles

0 0.25 0.5
 Miles

0 0.25 0.5
 Miles

North Arrow



- NST Express Pipeline
- Yellowstone River
 - River HDD
 - Valve Location
 - Abandoned Valve Location
 - Proposed Route
 - Original Route
 - Existing Road
 - Proposed Corridor
 - Original Corridor
 - Proposed Facility Location
 - Surface Tract
 - Yellowstone River
 - Township/Range Boundary
 - Section Boundary

SWCA
 ENVIRONMENTAL CONSULTANTS
 116 North 4th Street
 Suite 200
 Bismarck, ND 58501
 Phone: 701.258.6622
 Fax: 701.258.5957
 www.swca.com
 Page 2 of 11

Projection: NAD 1983 UTM Zone 13N

Mckenzie County, North Dakota

Base Map: 2014 Aerial Imagery
 Source: USDA/RS - Aerial Photography Field Office
 Quadrangle: Dore (1991), Buford (1976)
 Township/Range: T. 151N, R. 104W

0 0.25 0.5 Miles
 0 0.25 0.5 Kilometers



- NST Express Pipeline
- Yellowstone River
- River HDD
- Valve Location
- Abandoned Valve Location
- Proposed Route

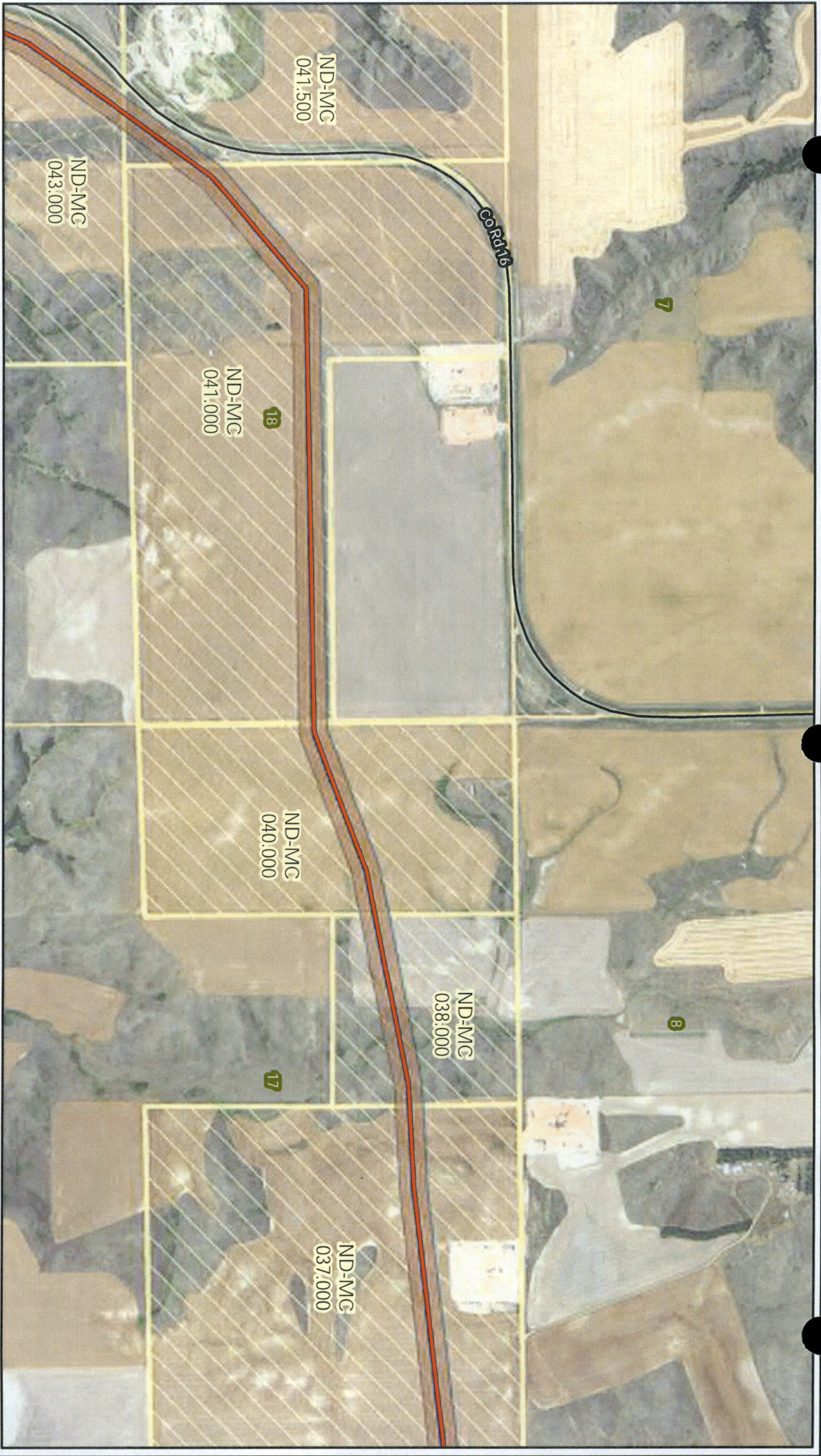
- Original Route
- Existing Road
- Proposed Corridor
- Original Corridor
- Proposed Facility Location
- Surface Tract
- Yellowstone River
- Township/Range Boundary
- Section Boundary

SWCA
 ENVIRONMENTAL CONSULTANTS
 116 North 4th Street
 Suite 200
 Bismarck, ND 58501
 Phone: 701.258.6622
 Fax: 701.258.5957
 www.swca.com
 Page 3 of 11

0 0.25 0.5
 Kilometers

0 0.25 0.5
 Miles

Base Map: 2014 Aerial Imagery
 Source: USDA/SA - Aerial Photography Field Office
 Quadrangle: Burford (1976)
 Township/Range: T. 151N, R. 104W &
 T. 151N, R. 103W
 McKenzie County, North Dakota
 Projection: NAD 1983 UTM Zone 13N



- NST Express Pipeline
- Original Route
 - Existing Road
 - Yellowstone River
 - River HDD
 - Valve Location
 - Abandoned Valve Location
 - Proposed Route
 - Yellowstone River
 - Township/Range Boundary
 - Section Boundary
 - Proposed Facility Location
 - Surface Tract

SWCA
 ENVIRONMENTAL CONSULTANTS
 116 North 4th Street
 Suite 200
 Bismarck, ND 58501
 Phone: 701.258.6622
 Fax: 701.258.5957
 www.swca.com
 Page 4 of 11

0 0.25 0.5
 Miles

0 0.25 0.5
 Kilometers

Base Map: 2014 Aerial Imagery
 Source: USDA/ISA - Aerial Photography Field Office
 Quadrangle: Buford (1976)
 Township/Range: T. 151N, R. 103W

Mckenzie County, North Dakota
 Projection: NAD 1983 UTM Zone 13N



- NST Express Pipeline
- Yellowstone River
 - River HDD
 - Valve Location
 - Abandoned Valve Location
 - Proposed Route
 - Original Route
 - Existing Road
 - Proposed Corridor
 - Original Corridor
 - Proposed Facility Location
 - Surface Tract
 - Yellowstone River
 - Township/Range Boundary
 - Section Boundary

SWCA
 ENVIRONMENTAL CONSULTANTS
 116 North 4th Street
 Suite 200
 Bismarck, ND 58501
 Phone: 701.258.6622
 Fax: 701.258.5957
 www.swca.com
 Page 5 of 11

Projection: NAD 1983 UTM Zone 13N

McKenzie County, North Dakota

Base Map: 2014 Aerial Imagery
 Source: USDA/FSA - Aerial Photography Field Office
 Quadrangle: Buford (1976), Cartwright NE (1991)
 Township/Range: T. 151N, R. 103W

0 0.25 0.5
 Miles

0 0.25 0.5
 Kilometers



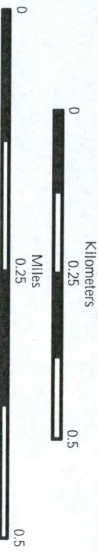
- NST Express Pipeline
- Yellowstone River HDD
- Valve Location
- Abandoned Valve Location
- Proposed Route

- Original Route
- Existing Road
- Proposed Corridor
- Original Corridor
- Proposed Facility Location
- Surface Tract

- Yellowstone River
- Township/Range Boundary
- Section Boundary

SWCA
 ENVIRONMENTAL CONSULTANTS
 116 North 4th Street
 Suite 200
 Bismarck, ND 58501
 Phone: 701.258.6622
 Fax: 701.258.5957
 www.swca.com
 Page 6 of 11

Base Map: 2014 Aerial Imagery
 Source: USDA/FSA - Aerial Photography Field Office
 Quadrangle: Cartwright NE (1991)
 Township/Range: T. 151N, R. 103W
 McKenzie County, North Dakota
 Projection: NAD 1983 UTM Zone 13N





- NST Express Pipeline
- River HDD
- Valve Location
- Abandoned Valve Location
- Proposed Route

- Original Route
- Existing Road
- Proposed Corridor
- Original Corridor
- Proposed Facility Location
- Surface Tract
- Yellowstone River
- Township/Range Boundary
- Section Boundary

SWCA
 ENVIRONMENTAL CONSULTANTS
 116 North 4th Street
 Suite 200
 Bismarck, ND 58501
 Phone: 701.258.6622
 Fax: 701.258.5957
 www.swca.com
 Page 7 of 11

Projection: NAD 1983 UTM Zone 13N

0 0.25 0.5 0.5
 Kilometers

0 0.25 0.5
 Miles

Base Map: 2014 Aerial Imagery
 Source: USDA/SA - Aerial Photography Field Office
 Quadrangle: Cartwright NE (1991)
 Township/Range: T. 151N, R. 103W &
 T. 151N, R. 102W
 McKenzie County, North Dakota



- NST Express Pipeline
- Original Route
- Existing Road
- Valve Location
- Abandoned Valve Location
- Proposed Facility Location
- Surface Tract

- Yellowstone River
- Township/Range Boundary
- Section Boundary

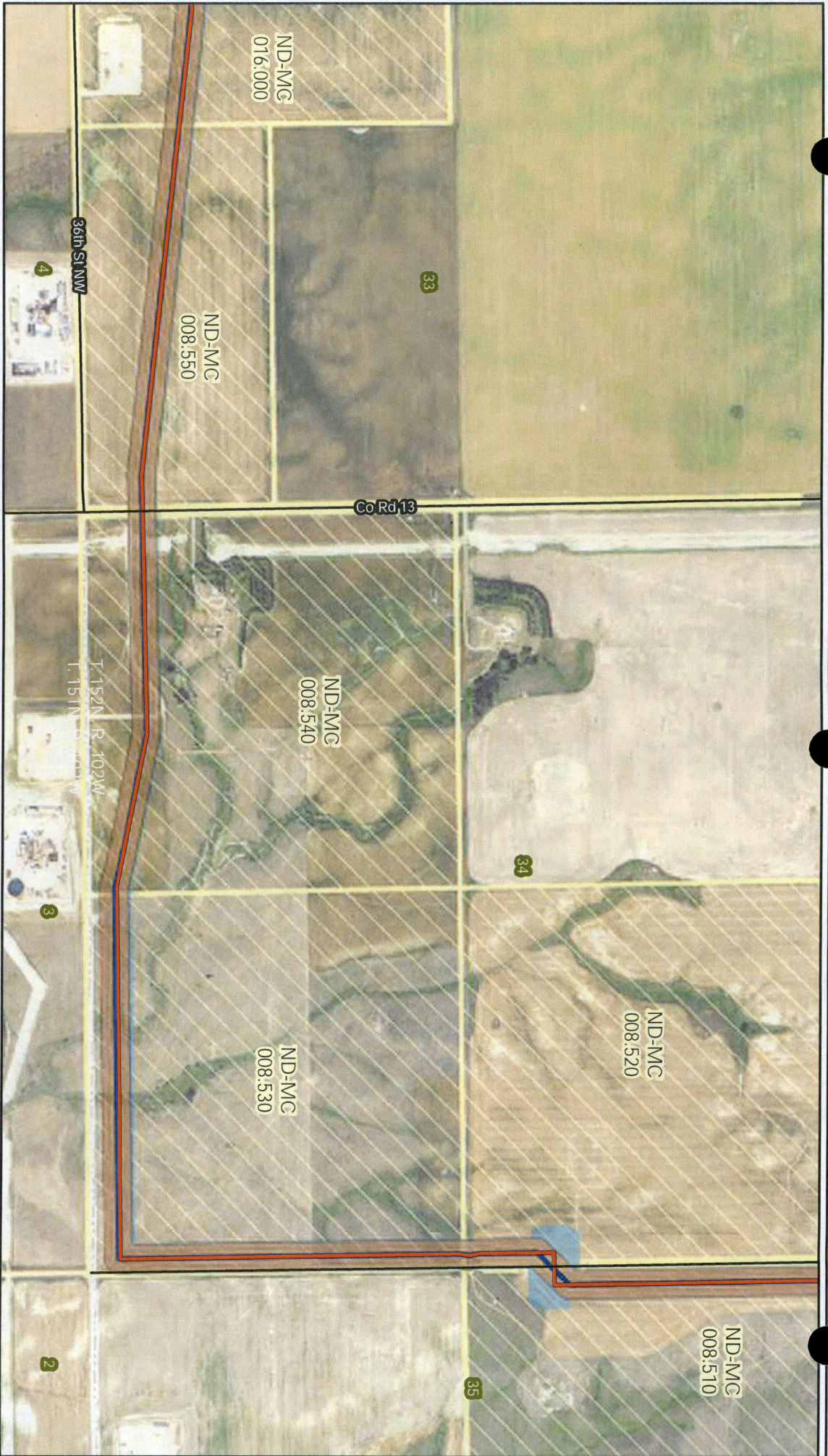
SWCA
 ENVIRONMENTAL CONSULTANTS
 116 North 4th Street
 Suite 200
 Bismarck, ND 58501
 Phone: 701.258.6622
 Fax: 701.258.5957
 www.swca.com
 Page 8 of 11

Projection: NAD 1983 UTM Zone 13N

0 0.25 0.5
 Miles

0 0.25 0.5
 Kilometers

Base Map: 2014 Aerial Imagery
 Source: USDA/SA - Aerial Photography Field Office
 Quadrangle: Cartwright NE (1991), Camp Creek West (1978)
 Township/Range: T. 151N, R. 102W &
 T. 152N, R. 102W
 Mckenzie County, North Dakota



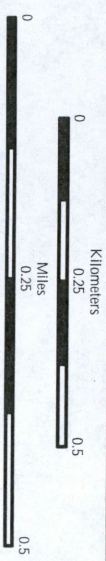
- NST Express Pipeline
- Yellowstone
 - River HDD
 - Valve Location
 - Abandoned Valve Location
 - Proposed Route

- Original Route
- Existing Road
- Proposed Corridor
- Original Corridor
- Proposed Facility Location
- Surface Tract

- Yellowstone River
- Township/Range Boundary
- Section Boundary

SWCA
 ENVIRONMENTAL CONSULTANTS
 116 North 4th Street
 Suite 200
 Bismarck, ND 58501
 Phone: 701.258.6622
 Fax: 701.258.5957
 www.swca.com
 Page 9 of 11

Base Map: 2014 Aerial Imagery
 Source: USDA/FSA - Aerial Photography Field Office
 Quadrangle: Camp Creek West (1978)
 Township/Range: T. 152N, R. 102W
 Mckenzie County, North Dakota
 Projection: NAD 1983 UTM Zone 13N





Co. Road

37th St NW
ND-MC-008;520

ND-MC
008;000

ND-MC
008;500

ND-MC
008;510

ND-MC
007;000

- NST Express Pipeline
- Yellowstone River
 - River HDD
 - Valve Location
 - Abandoned Valve Location
 - Proposed Route
 - Original Route
 - Existing Road
 - Proposed Corridor
 - Original Corridor
 - Proposed Facility Location
 - Surface Tract
 - Yellowstone River
 - Township/Range Boundary
 - Section Boundary

SWCA
ENVIRONMENTAL CONSULTANTS
116 North 4th Street
Suite 200
Bismarck, ND 58501
Phone: 701.258.6622
Fax: 701.258.5957
www.swca.com
Page 10 of 11

0 0.25 0.5
Kilometers

0 0.25 0.5
Miles

Base Map: 2014 Aerial Imagery
Source: USDA/FSA - Aerial Photography Field Office
Quadrangle: Camp Creek West (1978)
Township/Range: T. 152N, R. 102W

McKenzie County, North Dakota
Projection: NAD 1983 UTM Zone 13N



- NST Express Pipeline
- River HDD
- Valve Location
- Abandoned Valve Location
- Proposed Route

- Original Route
- Existing Road
- Proposed Corridor
- Original Corridor
- Proposed Facility Location
- Surface Tract
- Yellowstone River
- Township/Range Boundary
- Section Boundary

SWCA
 ENVIRONMENTAL CONSULTANTS
 116 North 4th Street
 Suite 200
 Bismarck, ND 58501
 Phone: 701.258.6622
 Fax: 701.258.5957
 www.swca.com
 Page 11 of 11

0 0.25 0.5 0.5
 Kilometers
 0 0.25 0.5 0.5
 Miles

Base Map: 2014 Aerial Imagery
 Source: USDA/SA - Aerial Photography Field Office
 Quadrangle: Camp Creek West (1978)
 Township/Range: T. 152N, R. 102W

McKenzie County, North Dakota
 Projection: NAD 1983 UTM Zone 13N