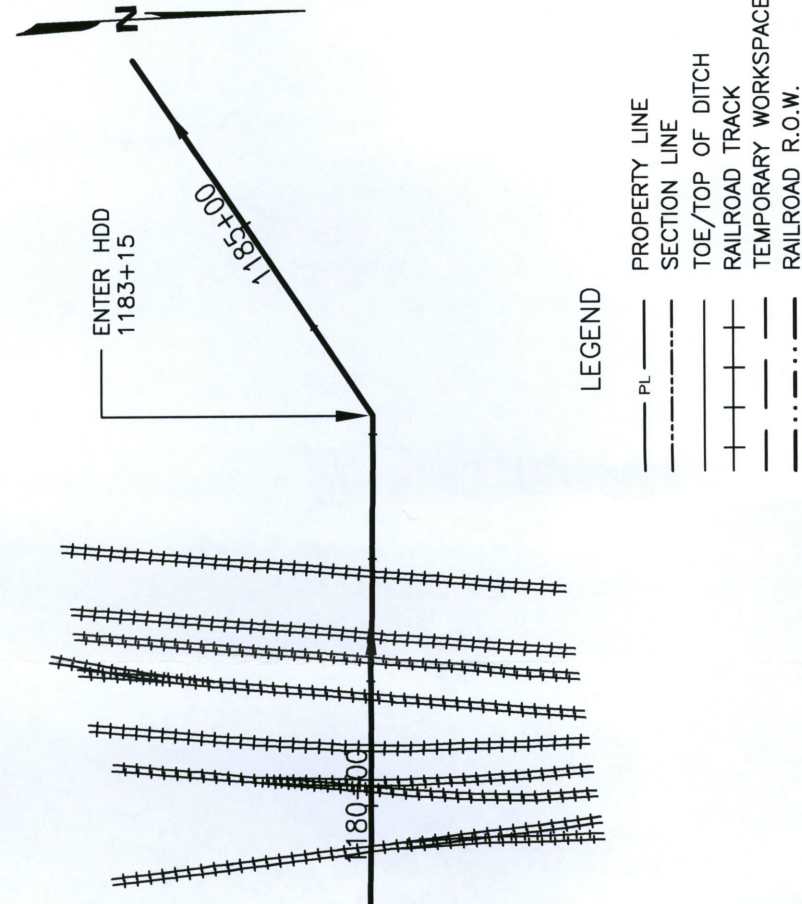


# BNSF RAILROAD CROSSING EXHIBIT

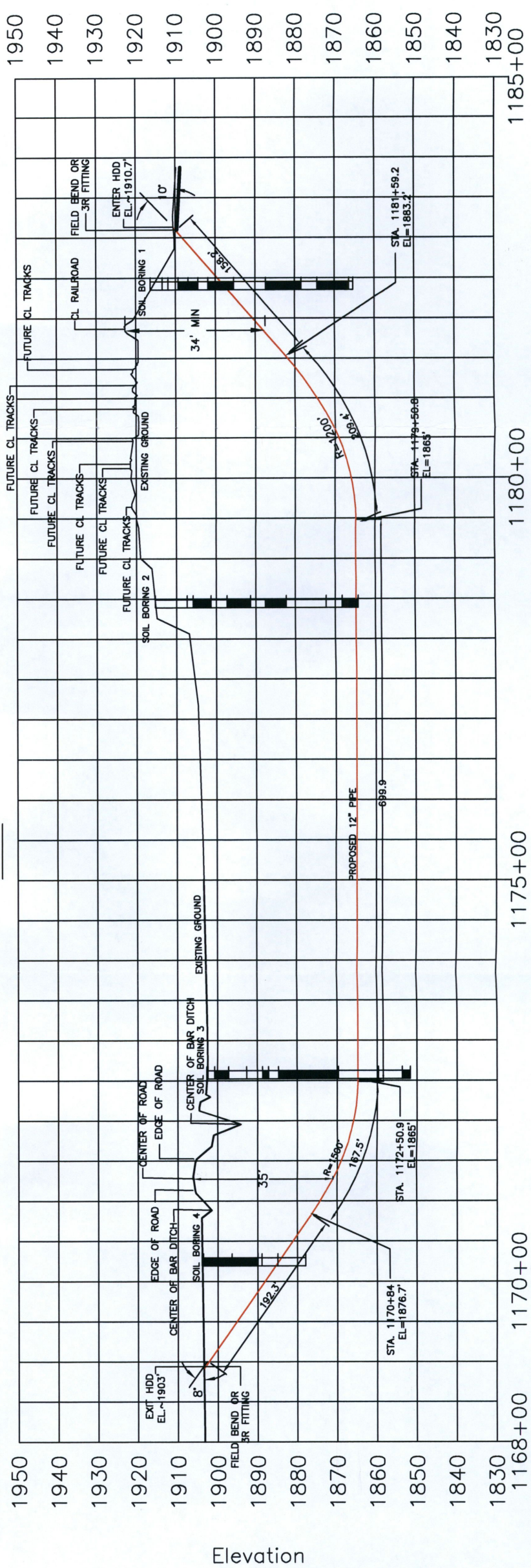
*S*<sup>1</sup>/<sub>2</sub> SEC. 19,  
T151N, R104W, 5TH P.M.

- NOTES:**
- ALL HORIZONTAL DISTANCES ARE REPRESENTED IN GRID VALUES, MEASURED IN INTERNATIONAL FEET, AND ARE BASED ON NAD83 NORTH DAKOTA STATE PLANE, NORTH ZONE. ALL VERTICAL DISTANCES ARE BASED ON NAVD 88.
  - CROSSING DESIGNED AND TO BE CONSTRUCTED IN ACCORDANCE WITH TITLE 49 CODE OF FEDERAL REGULATIONS, PART 195.
  - EXISTING UTILITIES ARE SHOWN IN APPROXIMATE LOCATION GENERATED FROM PREVIOUS MAPS AND SURVEY. CONTRACTOR SHALL VERIFY EXACT LOCATION AND ELEVATION OF ALL EXISTING UTILITIES IN THE AREA OF WORK PRIOR TO CONSTRUCTION AND CALL MISS DIG AT 1-800-795-0555 OR THE NATIONAL ONE CALL NUMBER 811 AND ALL OTHER UTILITY COMPANIES AT LEAST THREE (3) WORKING DAYS (72 HOURS) PRIOR TO CONSTRUCTION.

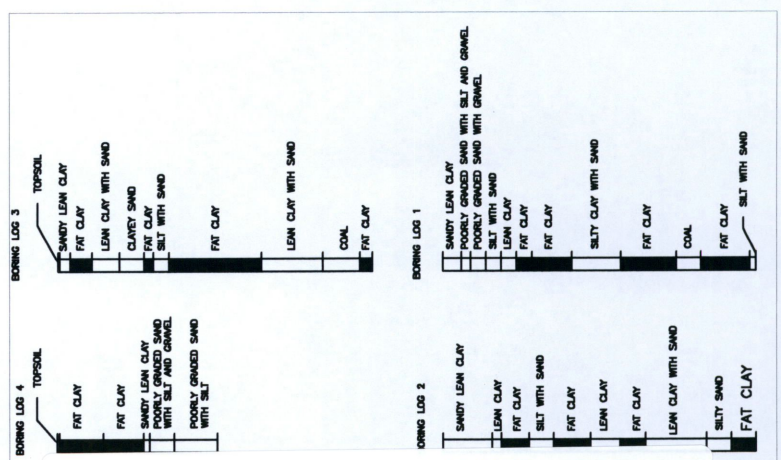
CONTENTS	CRUDE
MATERIAL SPEC	API 5L X52
WALL THICKNESS	0.500"
CARRIER (O.D.)	12.75"
INSIDE DIAMETER (I.D.)	11.75"
MATERIAL	CARBON STEEL
MAX. OPERATING PRESSURE	1440 psig
INSTALLATION	HDD
COATING TYPE	FBE, ARO



PLAN



PROFILE



24 PU-15-232 Filed: 9/10/2015 Pages: 1  
Exhibit 6

SURVEYING AND MAPPING LLC (SAM) 555 ZANG STREET, SUITE 210 LAKEWOOD, COLORADO 80228 OFC: 303.988.5852 FAX: 303.988.2195 EMAIL: INFO@SAM.BIZ TEXAS FIRM REGISTRATION NO. 100664300	
JOB NUMBER: 1014035146 PROJECT: NST EXPRESS PIPELINE SHEET: 1 OF 1 SCALE: 1"=150' TRACT ID: DRAWN BY: WM CHECKED BY: DATE: 09/08/2015	NO. _____ BY _____ DATE _____ REVISIONS

BNSF RAILROAD CROSSING EXHIBIT