

NST Express Road Crossing Authorization Acknowledgment

NST Express, LLC, 10077 Grogans Mill, The Woodlands, TX 77381, plans to cross the Charbon Township roads and section lines listed below with a pipeline:

- 36th St NW – From Section 31, Township 152 N, Range 102 W to Section 6, Township 151 N, Range 102 W
- Section Line Rd – From Section 6, Township 151 N, Range 102 W to Section 1, Township 151 N, Range 102 W

Exhibits of the road crossings are attached hereto.

Charbon Township only requires that NST Express, LLC obtain permission from the landowners on each side of a road or section line crossing, which NST Express, LLC has obtained. Therefore, the undersigned, being an authorized representative of Charbon Township, North Dakota, does hereby acknowledge authorization for NST Express, LLC to cross the roads and section lines listed above with its pipeline.



Signature of Authorized Township Representative

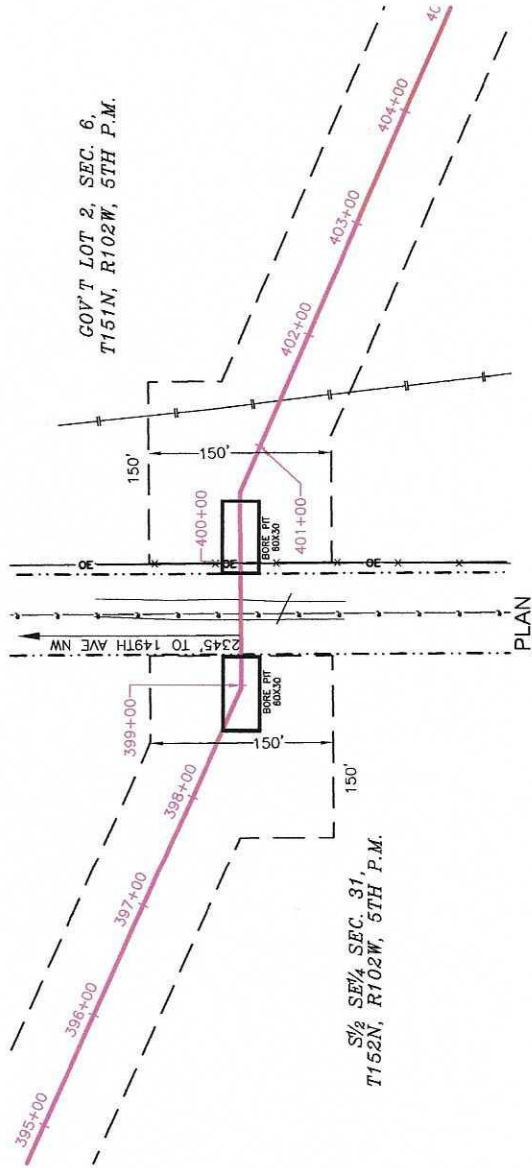
4/25/16

Date

Cameron Wahlstrom

Printed Name of Authorized Township Representative

36TH AVE NW CROSSING EXHIBIT



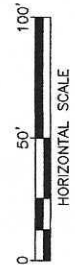
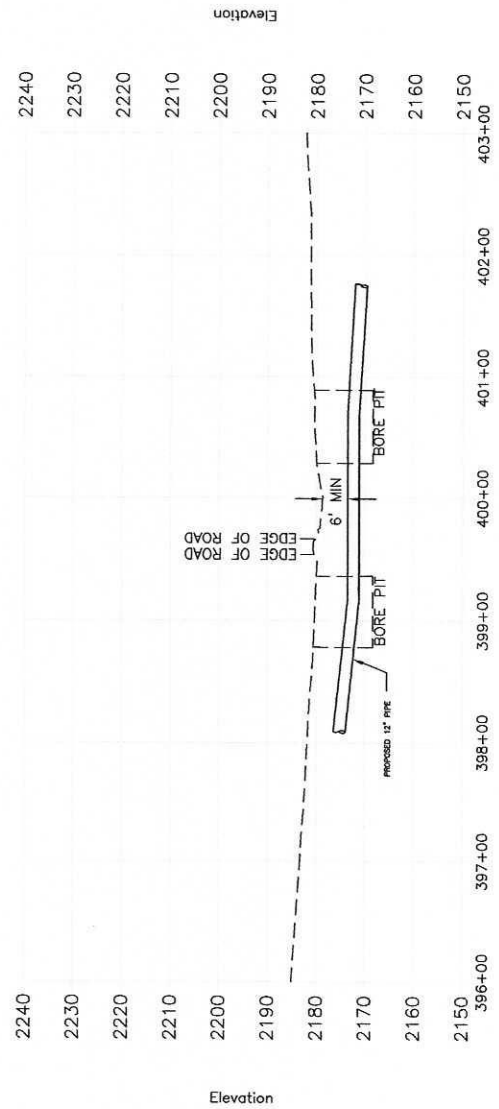
GOV'T LOT 2, SEC. 6,
T151N, R102W, 5TH P.M.

1/2 SE 1/4 SEC. 31,
T152N, R102W, 5TH P.M.

CONTENTS	CRUDE
MATERIAL SPEC	API 5L X52
WALL THICKNESS	0.500"
CARRIER (O.D.)	12.75"
INSIDE DIAMETER (I.D.)	11.75"
MATERIAL	CARBON STEEL
MAX. OPERATING PRESSURE	1440 psig
INSTALLATION	BORE
COATING TYPE	FBE, ARO

LEGEND

	PROPERTY LINE
	FOREIGN PIPELINE
	OVERHEAD ELECTRIC
	EDGE OF GRAVEL ROAD
	TEMPORARY WORKSPACE
	ROAD R.O.W.



- NOTES:**
- ALL HORIZONTAL DISTANCES ARE REPRESENTED IN GRID VALUES, MEASURED IN INTERNATIONAL FEET, AND ARE BASED ON NAD83 NORTH DAKOTA STATE PLANE, NORTH ZONE. ALL VERTICAL DISTANCES ARE BASED ON NAVD 88.
 - CROSSING DESIGNED AND TO BE CONSTRUCTED IN ACCORDANCE WITH TITLE 49, CODE OF FEDERAL REGULATIONS, PART 196.
 - EXISTING UTILITIES ARE SHOWN IN APPROXIMATE LOCATION GENERATED FROM PREVIOUS MAPS AND SURVEY. CONTRACTOR SHALL VERIFY EXACT LOCATION AND ELEVATION OF ALL EXISTING UTILITIES IN THE AREA OF WORK PRIOR TO CONSTRUCTION AND CALL MISS DIG AT 1-800-795-0655 OR THE NATIONAL ONE CALL NUMBER 811, AND ALL OTHER UTILITY COMPANIES AT LEAST THREE (3) WORKING DAYS (72 HOURS) PRIOR TO CONSTRUCTION.

PROFILE

NO.	REVISIONS	BY	DATE

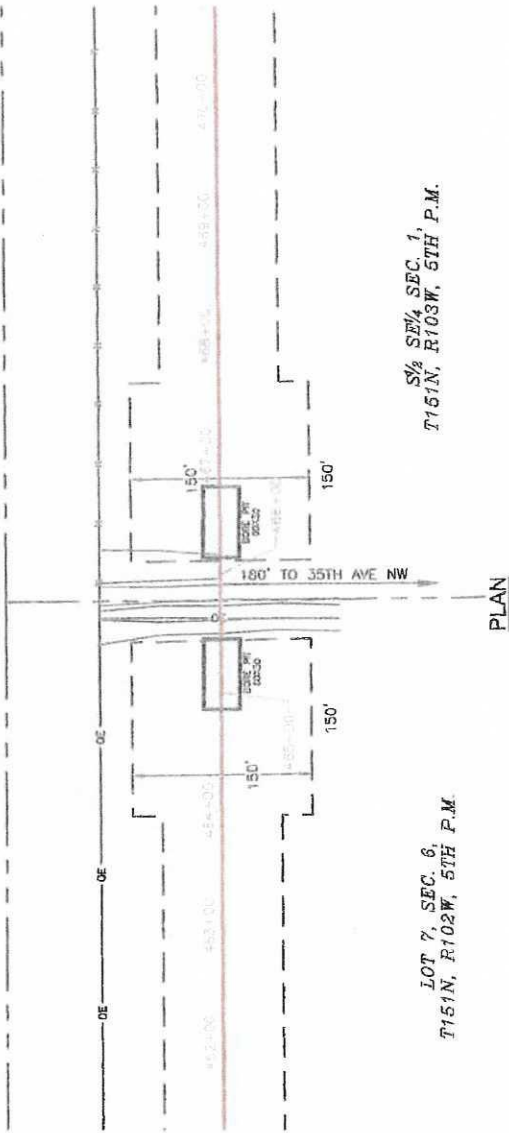
SAM
SURVEYING AND MAPPING ENGINEERING

SURVEYING AND MAPPING LLC (SAM)
555 ZANG STREET, SUITE 210
LAKEWOOD, COLORADO 80228
OFC: 303.988.5652
FAX: 303.988.2195
E-MAIL: SAM@SAM-ENGINEERING.COM
TEXAS FIRM REGISTRATION NO. 10064300

XNST EXPRESS
NST EXPRESS, LLC

36TH AVE NW CROSSING EXHIBIT

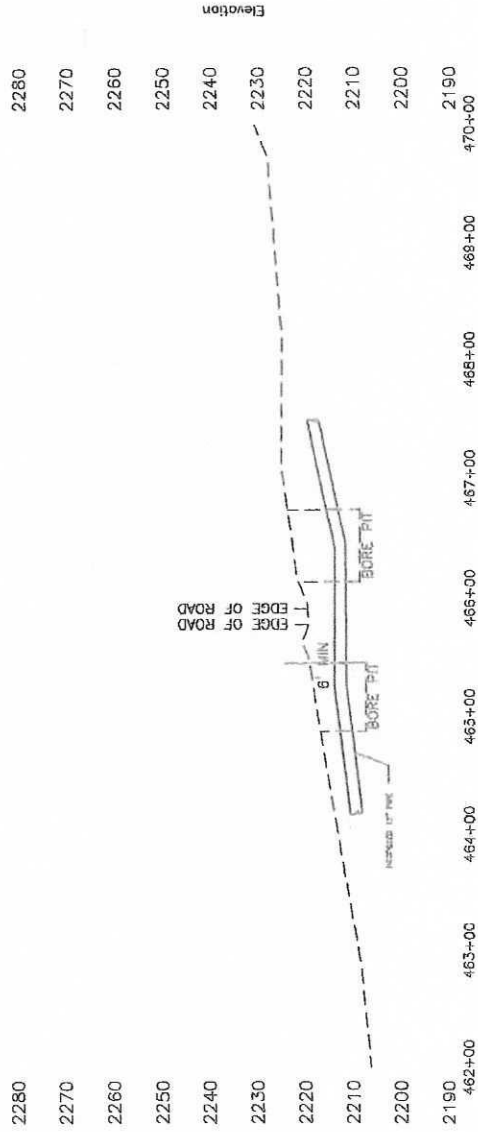
FIELD ROAD CROSSING EXHIBIT



CONTENTS	CRUDE OIL
MATERIAL SPEC	API 5L X52
WALL THICKNESS	0.500"
CARRIER (G D)	12.75"
INSIDE DIAMETER (I D)	11.75"
MATERIAL	CARBON STEEL
MAX. OPERATING PRESSURE	1440 psig
INSTALLATION	BORE
COATING TYPE	FBE, ARO

LEGEND

---	SECTION LINE
---	OVERHEAD ELECTRIC
---	EDGE OF GRAVEL ROAD
---	TEMPORARY WORKSPACE



- NOTES:
- ALL HORIZONTAL DISTANCES ARE REPRESENTED IN GRID VALUES, MEASURED IN INTERNATIONAL FEET, AND ARE BASED ON NAD83 NORTH DAKOTA STATE PLANE - NORTH ZONE. ALL VERTICAL DISTANCES ARE BASED ON NAVD 88.
 - CROSSING DESIGNED AND TO BE CONSTRUCTED IN ACCORDANCE WITH TITLE 49 CODE OF FEDERAL REGULATIONS, PART 195.
 - EXISTING UTILITIES ARE SHOWN IN APPROXIMATE LOCATION GENERATED FROM PREVIOUS MAPS AND SURVEY. CONTRACTOR SHALL VERIFY EXACT LOCATION AND ELEVATION OF ALL EXISTING UTILITIES IN THE AREA OF WORK PRIOR TO CONSTRUCTION AND CALL WISS DIG AT 1-800-795-0865 OR THE NATIONAL ONE CALL NUMBER 811 AND ALL OTHER UTILITY COMPANIES AT LEAST THREE (3) WORKING DAYS (72 HOURS) PRIOR TO CONSTRUCTION.

SURVEYING AND MAPPING LLC (SAM)
555 ZANG STREET SUITE 210
DALLAS, TEXAS 75208
OFF: 303.988.5852
FAX: 303.988.2195
EMAIL: INFO@SAM.BIZ



JOB NUMBER: 101-0204146
PROJECT: WEST CROSSING IMPROVEMENT
SHEET 1 OF 1
SCALE: 1"=100'
DRAWN BY: JRM
CHECKED BY: JRM
DATE: 6/12/2015

NO.	REVISIONS	BY	DATE

TEXAS FIRM REGISTRATION NO 10064300



FIELD ROAD CROSSING EXHIBIT