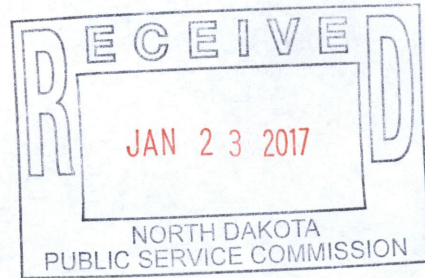




ENVIRONMENTAL CONSULTANTS

Sound Science. Creative Solutions.

Bismarck Office  
116 North 4<sup>th</sup> Street, Suite 200  
Bismarck, North Dakota 58501  
701.258.6622  
701.258.5957  
www.swca.com



December 27, 2016

Mr. Chip Lang  
Vice President, Operations & Engineering  
NST Express, LLC  
10077 Grogans Mill Road, Suite 530  
The Woodlands, TX 77380

Subject: NST Express Pipeline  
Tree and Shrub Verification Survey

Dear Mr. Lang:

As requested by NST Express, LLC (NST), SWCA Environmental Consultants (SWCA) conducted a tree and shrub survey of the NST Express Pipeline route on December 22, 2016 to ascertain the status of qualified (i.e., DBH of  $\geq 1$  inch) trees and shrubs under North Dakota Public Service Commission (NDPSC) regulations that would require replacement on a 2:1 basis, if those trees and shrubs were removed during pipeline construction activities. Enclosed is a map of the NST Express Pipeline route that shows the locations of the qualified trees and shrubs along the pipeline route. A similar map that shows other natural resources along the route was included in NST's NDPSC Certificate of Corridor Compatibility and Route Permit application (Caser No. PU-15-232).

The results of SWCA's field inspections of the areas shown on the enclosed map reveals that none of the 22 qualified trees and shrubs identified in the NDPSC application were removed during construction activities for the NST Express Pipeline and thus, the 2:1 replacement stipulation in the NDPSC permit would not apply.

If you have any questions regarding this matter or wish to discuss in more detail, please do not hesitate to contact me.

Sincerely,

James W. Dawson, PG, CHMM  
Senior Project Manager

Enclosure: As stated

80 PU-15-232 Filed: 1/23/2017 Pages: 8  
Copy of 27 Dec. 2016 letter to NST Express, LLC re  
tree and shrub survey

SWCA Environmental Consultants

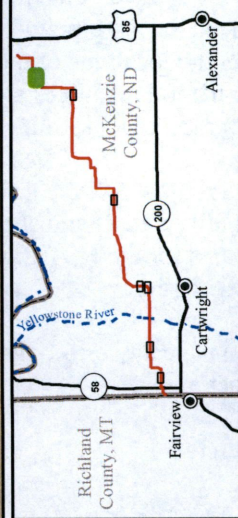
James Dawson



WV1  
 Latitude: 47.962123  
 Longitude: -103.700939

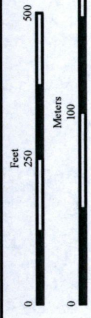
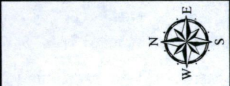
38th St NW

- NST Express Pipeline**
- Proposed Route
  - Existing Road
  - Woody Vegetation
  - Proposed Corridor
  - Proposed Facility Location
  - Yellowstone River
  - Section Boundary
  - Township/Range
  - Boundary



**SWCA**  
 ENVIRONMENTAL CONSULTANTS  
 116 North 4th Street  
 Suite 200  
 Bismarck, ND 58501  
 Phone: 701.258.6622  
 Fax: 701.258.5957  
 www.swca.com

Base Map: 2015 Aerial Imagery  
 Source: USDA/FSA - Aerial Photography Field Office  
 Quadrangle: Camp Creek West (1978)  
 Township/Range: T. 152N, R. 102W  
 McKenzie County, North Dakota



Projection: NAD 1983 UTM Zone 13N

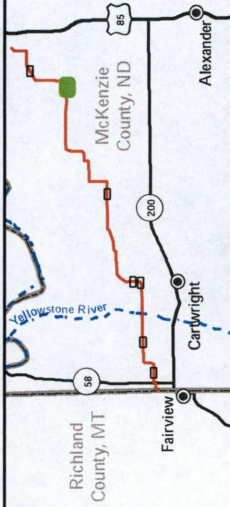
Page 1 of 7



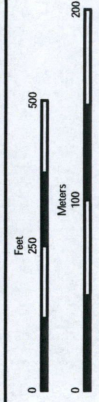
WV2  
 Latitude: 47:93:57.61  
 Longitude: -103:71:94.03

T. 152N, R. 102W  
 T. 151N, R. 102W

- NST Express Pipeline
- Proposed Route
- Existing Road
- Woody Vegetation
- Proposed Corridor
- Proposed Facility Location
- Yellowstone River
- Section Boundary
- Township/Range
- Boundary



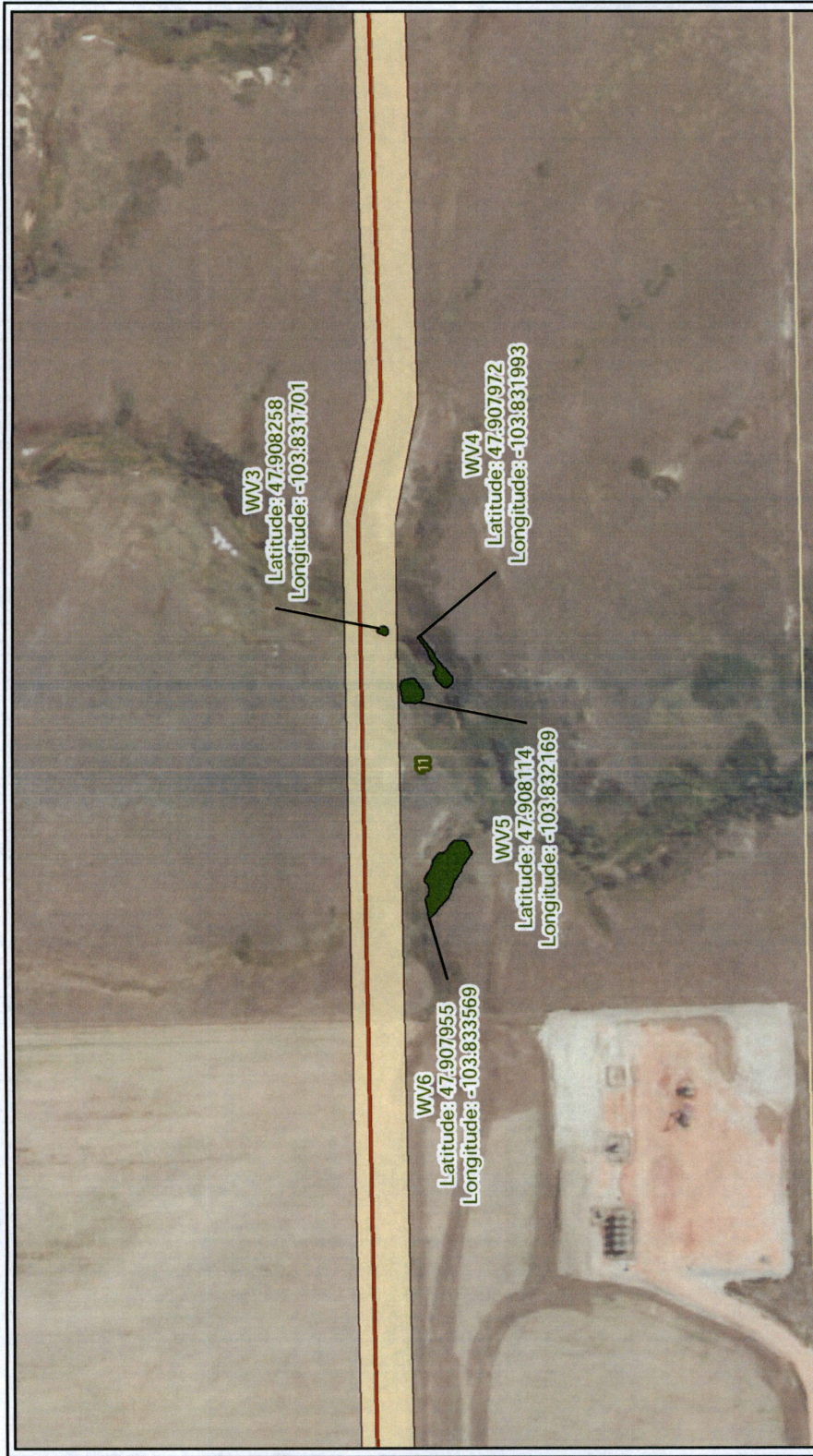
**SWCA**  
 ENVIRONMENTAL CONSULTANTS  
 116 North 4th Street  
 Suite 200  
 Bismarck, ND 58501  
 Phone: 701.258.6622  
 Fax: 701.258.5957  
 www.swca.com  
 Page 2 of 7



Base Map: 2015 Aerial Imagery  
 Source: USDA/FSA - Aerial Photography Field Office  
 Quadrangle: Camp Creek West (1978)  
 Township/Range: T. 152N, R. 102W  
 McKenzie County, North Dakota



Projection: NAD 1983 UTM Zone 13N



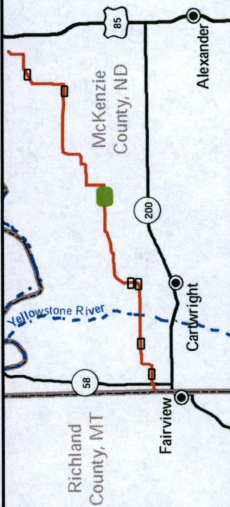
WV3  
Latitude: 47.908258  
Longitude: -103.831701

WV4  
Latitude: 47.907972  
Longitude: -103.831993

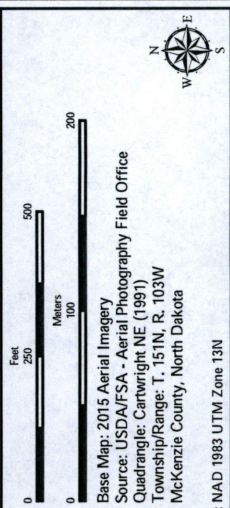
WV5  
Latitude: 47.908114  
Longitude: -103.832169

WV6  
Latitude: 47.907955  
Longitude: -103.833569

- NST Express Pipeline
- Proposed Route
- Existing Road
- Woody Vegetation
- Proposed Corridor
- Proposed Facility Location
- Yellowstone River
- Section Boundary
- Township/Range
- Boundary



**SWCA**<sup>®</sup>  
ENVIRONMENTAL CONSULTANTS  
116 North 4th Street  
Suite 200  
Bismarck, ND 58501  
Phone: 701.258.6622  
Fax: 701.258.5957  
www.swca.com  
Page 3 of 7



Projection: NAD 1983 UTM Zone 13N

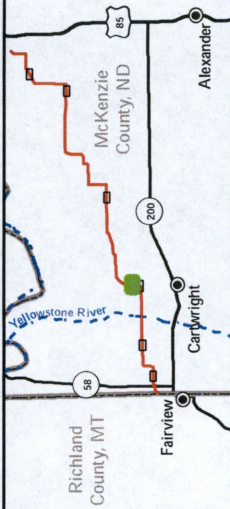
Base Map: 2015 Aerial Imagery  
Source: USDA/FSA - Aerial Photography Field Office  
Quadrange: Carwright NE (1991)  
Township/Range: T. 15N, R. 103W  
McKenzie County, North Dakota



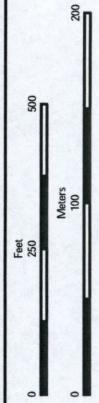
**WV7**  
 Latitude: 47.890789  
 Longitude: -103.925325

CO Rd 16  
 T. 151N, R. 104W  
 T. 151N, R. 103W

- NST Express Pipeline**
- Proposed Route
  - Existing Road
  - Woody Vegetation
  - Proposed Corridor
  - Proposed Facility Location
  - Yellowstone River
  - Section Boundary
  - Township/Range Boundary

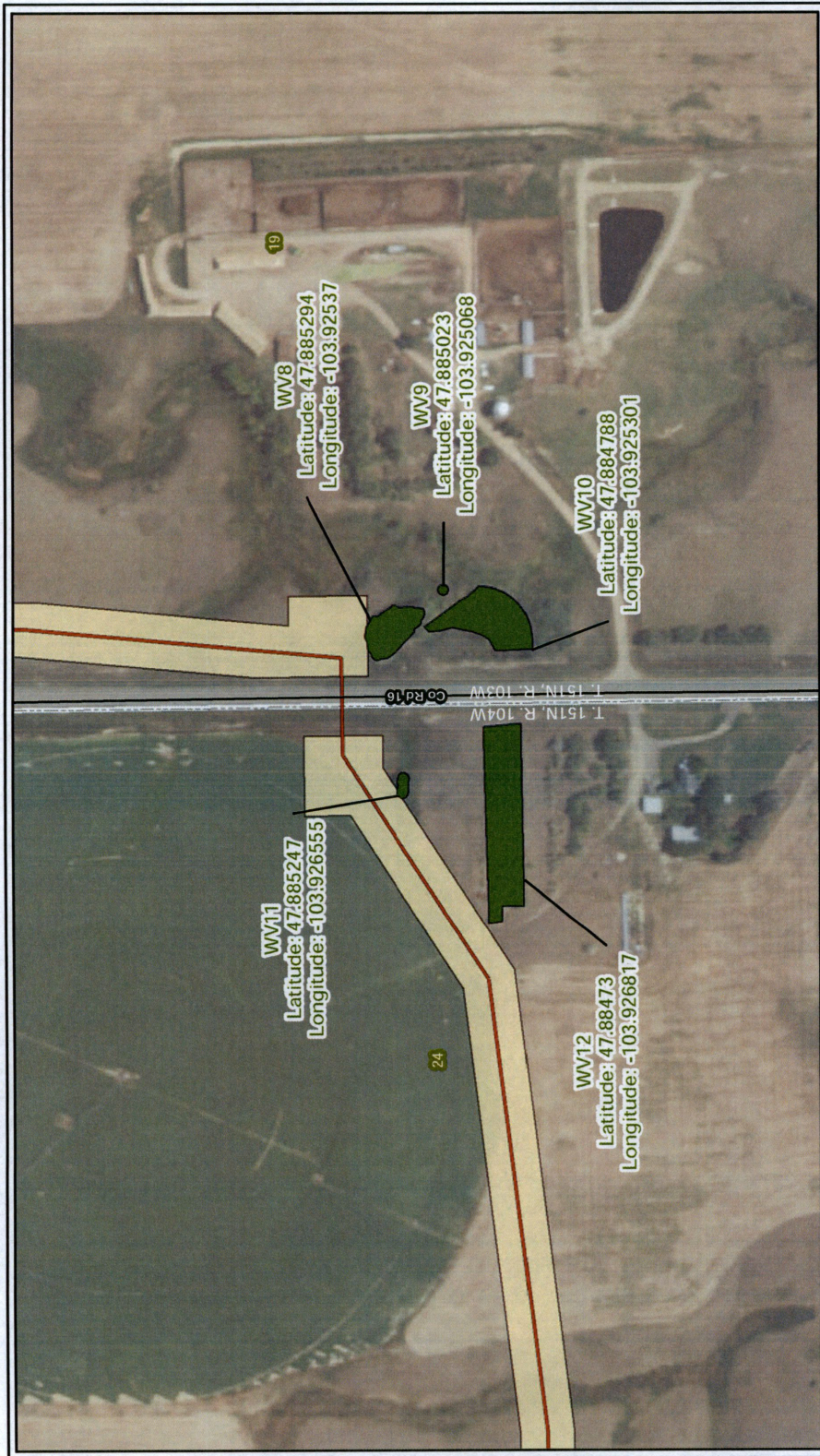


**SWCA**  
 ENVIRONMENTAL CONSULTANTS  
 116 North 4th Street  
 Suite 200  
 Bismarck, ND 58501  
 Phone: 701.258.6622  
 Fax: 701.258.5957  
 www.swca.com



Projection: NAD 1983 UTM Zone 13N

Page 4 of 7



**WV11**  
 Latitude: 47.885247  
 Longitude: -103.926555

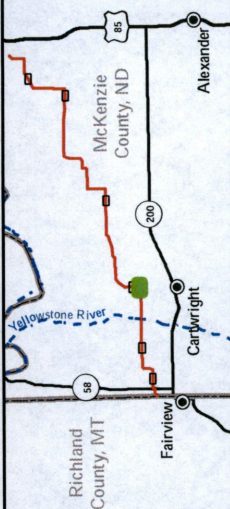
**WV12**  
 Latitude: 47.88473  
 Longitude: -103.926817

**WV8**  
 Latitude: 47.885294  
 Longitude: -103.92537

**WV9**  
 Latitude: 47.885023  
 Longitude: -103.925068

**WV10**  
 Latitude: 47.884788  
 Longitude: -103.925301

- NST Express Pipeline
- Proposed Route
- Existing Road
- Woody Vegetation
- Proposed Corridor
- Proposed Facility Location
- Yellowstone River
- Section Boundary
- Township/Range Boundary



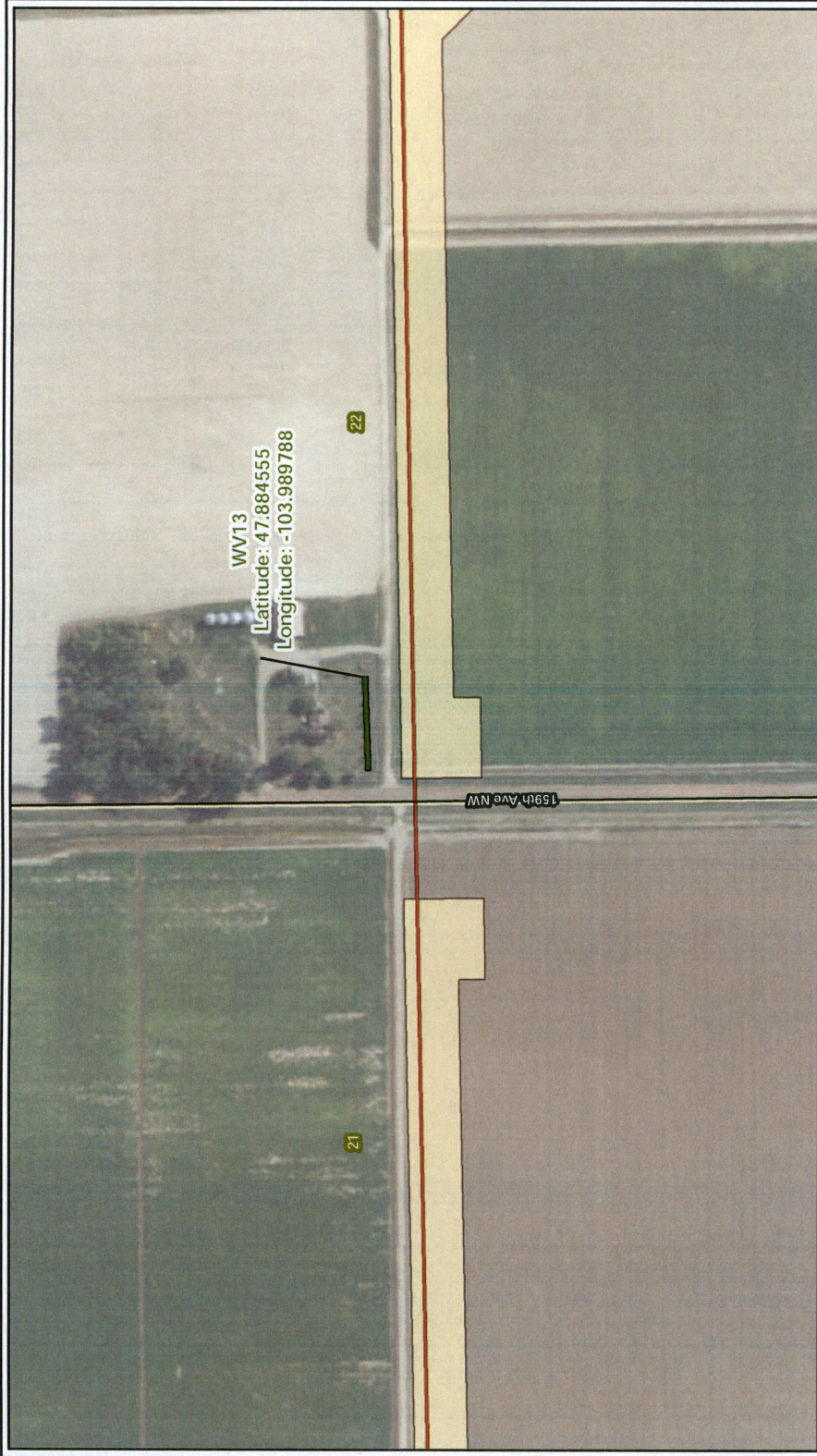
**SWCA**  
 ENVIRONMENTAL CONSULTANTS  
 116 North 4th Street  
 Suite 200  
 Bismarck, ND 58501  
 Phone: 701.258.6622  
 Fax: 701.258.5957  
[www.swca.com](http://www.swca.com)

Feet 0 200 500  
 Meters 0 100 200

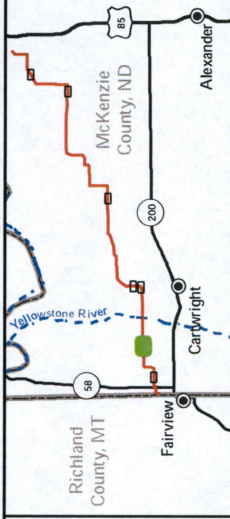
Base Map: 2015 Aerial Imagery  
 Source: USDA/FSA - Aerial Photography Field Office  
 Quadrangle: Butorc (1976)  
 Township/Range: T. 151N, R. 103W & T. 151N, R. 104W  
 McKenzie County, North Dakota

Projection: NAD 1983 UTM Zone 13N

Page 5 of 7



- NST Express Pipeline**
- Proposed Route
  - Existing Road
  - Woody Vegetation
  - Proposed Corridor
  - Proposed Facility Location
  - Yellowstone River
  - Section Boundary
  - Township/Range
  - Boundary



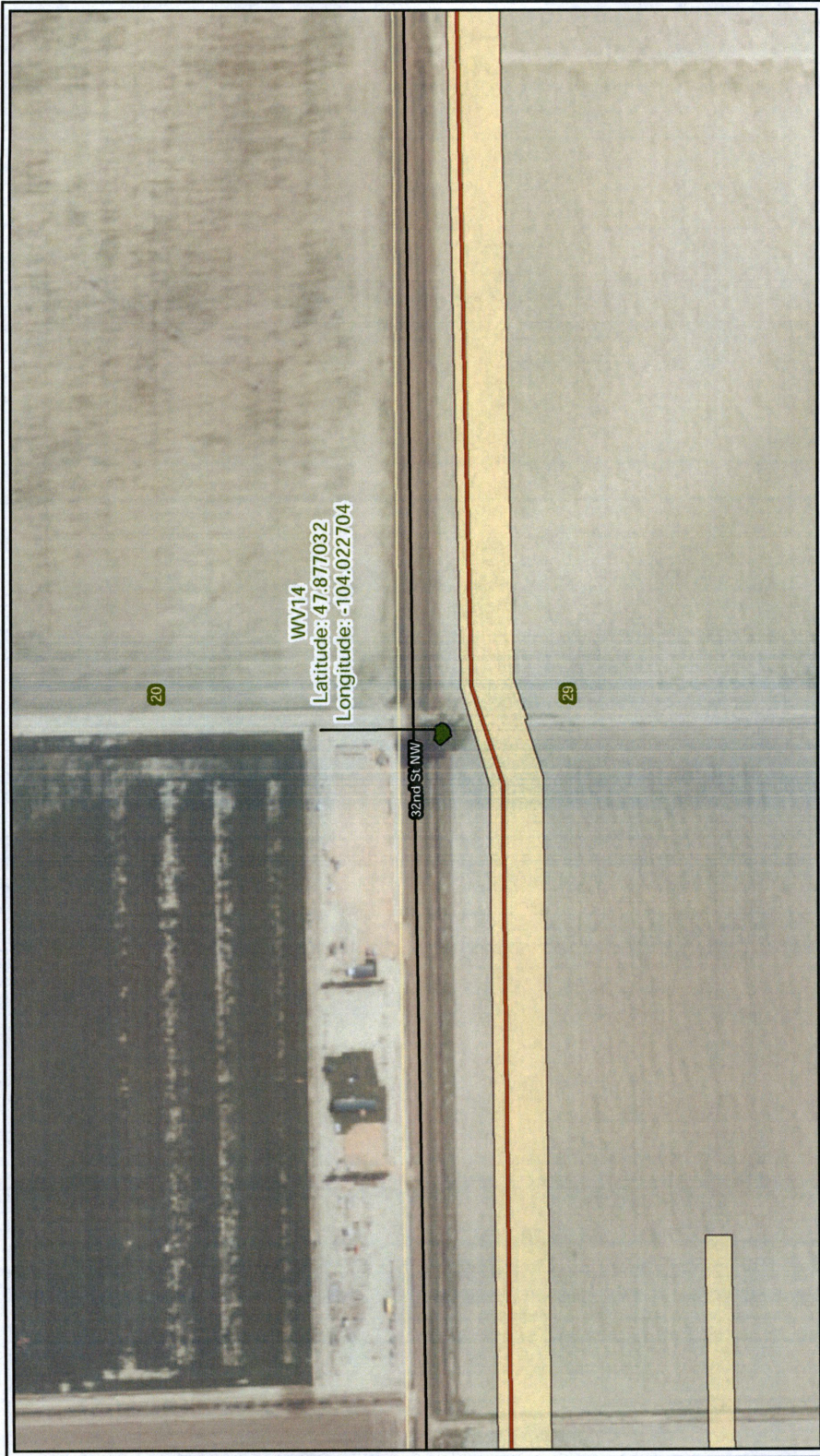
**SWCA**  
 ENVIRONMENTAL CONSULTANTS  
 116 North 4th Street  
 Suite 200  
 Bismarck, ND 58501  
 Phone: 701.258.6622  
 Fax: 701.258.5957  
 www.swca.com

Base Map: 2015 Aerial Imagery  
 Source: USDA/FSA - Aerial Photography Field Office  
 Quadrangle: Buford (1976)  
 Township/Range: T. 151N, R. 104W  
 McKenzie County, North Dakota



Projection: NAD 1983 UTM Zone 13N

Page 6 of 7



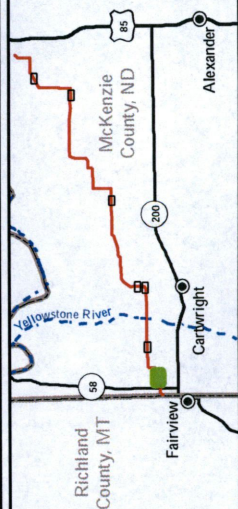
WV14  
 Latitude: 47.877032  
 Longitude: -104.022704

32nd St NW

20

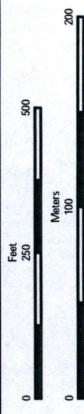
29

- NST Express Pipeline
- Proposed Route
- Existing Road
- Woody Vegetation
- Proposed Corridor
- Proposed
- Facility Location
- Yellowstone River
- Section Boundary
- Township/Range
- Boundary



**SWCA**  
 ENVIRONMENTAL CONSULTANTS  
 116 North 4th Street  
 Suite 200  
 Bismarck, ND 58501  
 Phone: 701.258.6622  
 Fax: 701.258.5957  
 www.swca.com

Page 7 of 7



Base Map: 2015 Aerial Imagery  
 Source: USDA/FSA - Aerial Photography Field Office  
 Quadrangle: Dore (1997)  
 Township/Range: T. 151N, R. 104W  
 McKenzie County, North Dakota



Projection: NAD 1983 UTM Zone 13N