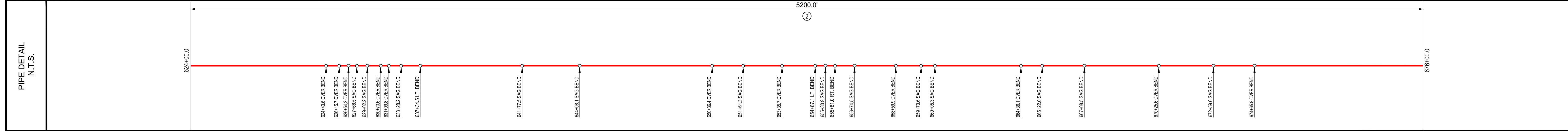
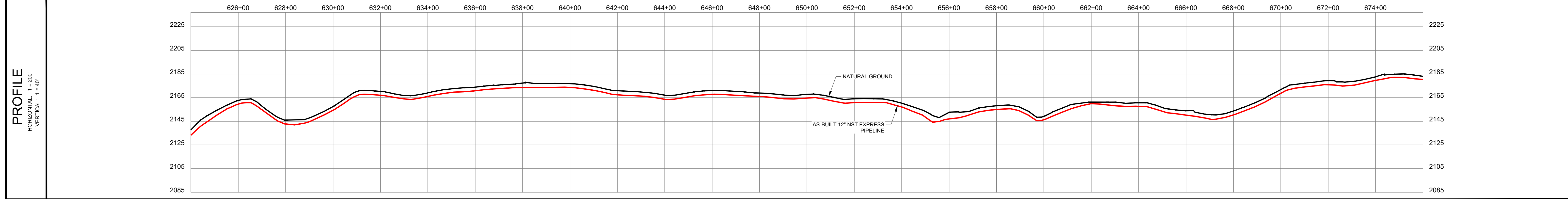


STATIONING

624+00.0 COVER 6.5	624+43.6 3' OVER BEND	626+15.7 4' OVER BEND	626+54.2 11' OVER BEND	627+66.5 5' SAG BEND	629+02.2 4' SAG BEND	630+73.6 4' OVER BEND	631+09.8 6' OVER BEND	633+28.2 3' SAG BEND	637+34.5 90' LT. BEND	641+77.5 2' SAG BEND	644+08.1 3' SAG BEND	648+00.0 COVER 5.5	650+00.0 COVER 5.2	650+36.4 3' OVER BEND	651+61.3 3' SAG BEND	653+35.7 OVER BEND	654+87.1 26' LT. BEND	655+30.9 10' SAG BEND	655+81.0 26' RT. BEND	656+74.5 2' SAG BEND	658+59.9 4' OVER BEND	659+70.6 11' SAG BEND	660+05.3 3' SAG BEND	660+00.0 COVER 5.3	660+25.6 4' OVER BEND	662+00.0 COVER 5.2	664+00.0 COVER 5.0	664+36.1 3' OVER BEND	665+22.0 3' SAG BEND	666+00.0 COVER 5.7	667+08.5 5' SAG BEND	668+00.0 COVER 5.4	670+00.0 COVER 5.2	670+25.6 4' OVER BEND	672+00.0 COVER 5.5	672+56.6 2' SAG BEND	674+00.0 COVER 5.1	674+65.8 3' OVER BEND	676+00.0 COVER 4.7
--------------------	-----------------------	-----------------------	------------------------	----------------------	----------------------	-----------------------	-----------------------	----------------------	-----------------------	----------------------	----------------------	--------------------	--------------------	-----------------------	----------------------	--------------------	-----------------------	-----------------------	-----------------------	----------------------	-----------------------	-----------------------	----------------------	--------------------	-----------------------	--------------------	--------------------	-----------------------	----------------------	--------------------	----------------------	--------------------	--------------------	-----------------------	--------------------	----------------------	--------------------	-----------------------	--------------------



LEGEND

- C/L AS-BUILT PIPELINE
- FENCE LINE
- SURVEY/SECTION LINE
- TRACT BORDER
- COUNTY LINE
- EXISTING PIPELINE
- SURVEY CORRIDOR
- ROAD WAY
- PERMANENT EASEMENT
- TEMPORARY WORKSPACE
- ADDITIONAL TEMPORARY WORKSPACE
- POINT OF INTERSECTION
- TEST LEAD
- BLOCK VALVE
- BORE ENTRY/EXIT

GENERAL INFORMATION

ISSUED FOR REVIEW

M.A.O.P., XXXX P.S.I.G., MINIMUM REQ. TEST PRESSURE - XXXX PSIG
ALL BEARINGS, DISTANCES, AND COORDINATE VALUES CONTAINED HEREON ARE GRID BASED UPON THE NORTH DAKOTA STATE PLANE COORDINATE SYSTEM, NORTH ZONE OF THE NORTH AMERICAN DATUM 1983, U.S. SURVEY FEET

WARNING

A REASONABLE ATTEMPT HAS BEEN MADE TO LOCATE ALL UNDERGROUND OBSTRUCTIONS BUT UTILITIES SHOWN HEREON ARE APPROXIMATE ONLY AND THERE MAY ALSO BE OTHER UNDERGROUND UTILITIES THAT ARE NOT SHOWN. IT IS STILL THE CONTRACTOR'S RESPONSIBILITY TO LOCATE ALL UNDERGROUND FACILITIES WITHIN WORKING AREA. CONTRACTOR MUST CONTACT ONE CALL UTILITY LOCATION SERVICES AND THE OWNERS OF THE UTILITIES TO VERIFY THEIR LOCATION.

THIS DOCUMENT IS FOR AS-BUILT PURPOSES ONLY AND IS NOT INTENDED TO BE FILED FOR RECORD FOR EASEMENT OR ANY OTHER PURPOSE.

ORIGINAL DOCUMENT SIZE: 24" X 36"

REVISION

NO.	DESCRIPTION	DATE
1	SURVEY CORRIDOR	1/06/17
2	DEPTH OF COVER	10/31/17

SUMMARY OF MATERIALS

ITEM #	LINEAR FEET	DESCRIPTION
2	5200.0	12" x .250 X60M, 20 MILS FBE

NORTHSTAR MIDSTREAM

TOPOGRAPHIC
LOYALTY INNOVATION LEGACY
1400 EVERMAN PARKWAY, Ste. 197 • FT. WORTH, TEXAS 76140
TELEPHONE: (817) 746-7912 • FAX: (817) 744-7548
WWW.TOPOGRAPHIC.COM

AS-BUILT CONSTRUCTION ALIGNMENT

AS-BUILT NST EXPRESS 12" PIPELINE
624+00.0 TO 676+00.0

FILE: AB_NST_EXPRESS_REV2	REVISION:
DRAFT: J.M.C.	CHECK: B.R.
SHEET: 13 OF 24	DATE: 10/17/16

2