

**BASIN ELECTRIC  
POWER COOPERATIVE**

1717 EAST INTERSTATE AVENUE  
BISMARCK, NORTH DAKOTA 58503-0564  
PHONE: 701-223-0441  
FAX: 701-557-5336



June 26, 2015

Darrell Nitschke  
Executive Director  
North Dakota Public Service Commission  
600 East Boulevard; Dept. 408  
Bismarck, ND 58505-0480

**Re: 345-kV Transmission Line - Leland Olds Station to Groton-Certification**

Dear Mr. Nitschke:

The purpose of this letter is to provide notification to the North Dakota Public Service Commission (Commission) for the relocation of structure 023-447 within Basin Electric Power Cooperative (Basin Electric) Leland Olds to Groton 345kV transmission line which was originally constructed in 1972, prior to the enactment of the Transmission Facility Siting Act. The relocation project is required due to a North Dakota Department of Transportation (NDDOT) roadway improvement project along State Highway 3. The relocation project will occur as soon as possible, but no earlier than July 2015. According to the North Dakota Century Code 49-22-03 (3)(a)(3), "before conducting any activities, the utility certifies in writing to the Commission that the activities will not affect any known exclusion or avoidance areas and the utility will comply with all applicable conditions and protections in siting laws and rules and commission orders previously issued for any part of the facility." This correspondence serves to meet Basin Electric's notification to the Commission on the implementation of this project.

Description

The NDDOT, in cooperation with the Federal Highway Administration, is proposing a roadway improvement project along State Highway 3 from Napoleon to Dawson, ND (Project# NH-1-003(034)059, PCN 17707).

The NDDOT project will require Basin Electric to relocate an existing lattice tower structure (023-447) due to a grade raise along a portion of State Highway 3. Basin Electric plans to relocate structure 023-447 approximately 40.0 feet northwest from its existing centerline, therefore, increasing the wire height 6.0 feet and structure elevation increase of approximately 17.5 feet. Structure 023-447 is located approximately 16.0 miles south of Dawson, ND on the west side of Highway 3 and will remain within its existing 150.0 right away. Thus, the activities Basin Electric plans to conduct fall within North Dakota Century Code 49-22-03 (3)(a)(1)(c) since the relocation will be within three hundred feet from the existing centerline.

1 **PU-15-337** Filed: 6/26/2015 Pages: 5  
**Certification regarding exclusion and avoidance  
areas with supporting documentation**

Basin Electric Power Cooperative

Jon Madison

Summary and Conclusion

Basin Electric has evaluated the activities and believes it can be appropriately approved in accordance with the conditions and limitations found within North Dakota Century Code 49-22-03 (3)(a)(3). Basin Electric will comply with all applicable conditions and protections found in the ND PSC siting laws and rules.

Also, please find enclosed a site location map, notarized certification and confirmation letter from the North Dakota State Historical Preservation Office indicating all proposed activities will not affect any known exclusion or avoidance areas within the immediate area.

If you require additional information or if you have any questions regarding this request please contact me at (701) 557-5655 or by e-mail at [Jmadison@bepc.com](mailto:Jmadison@bepc.com).

Sincerely,



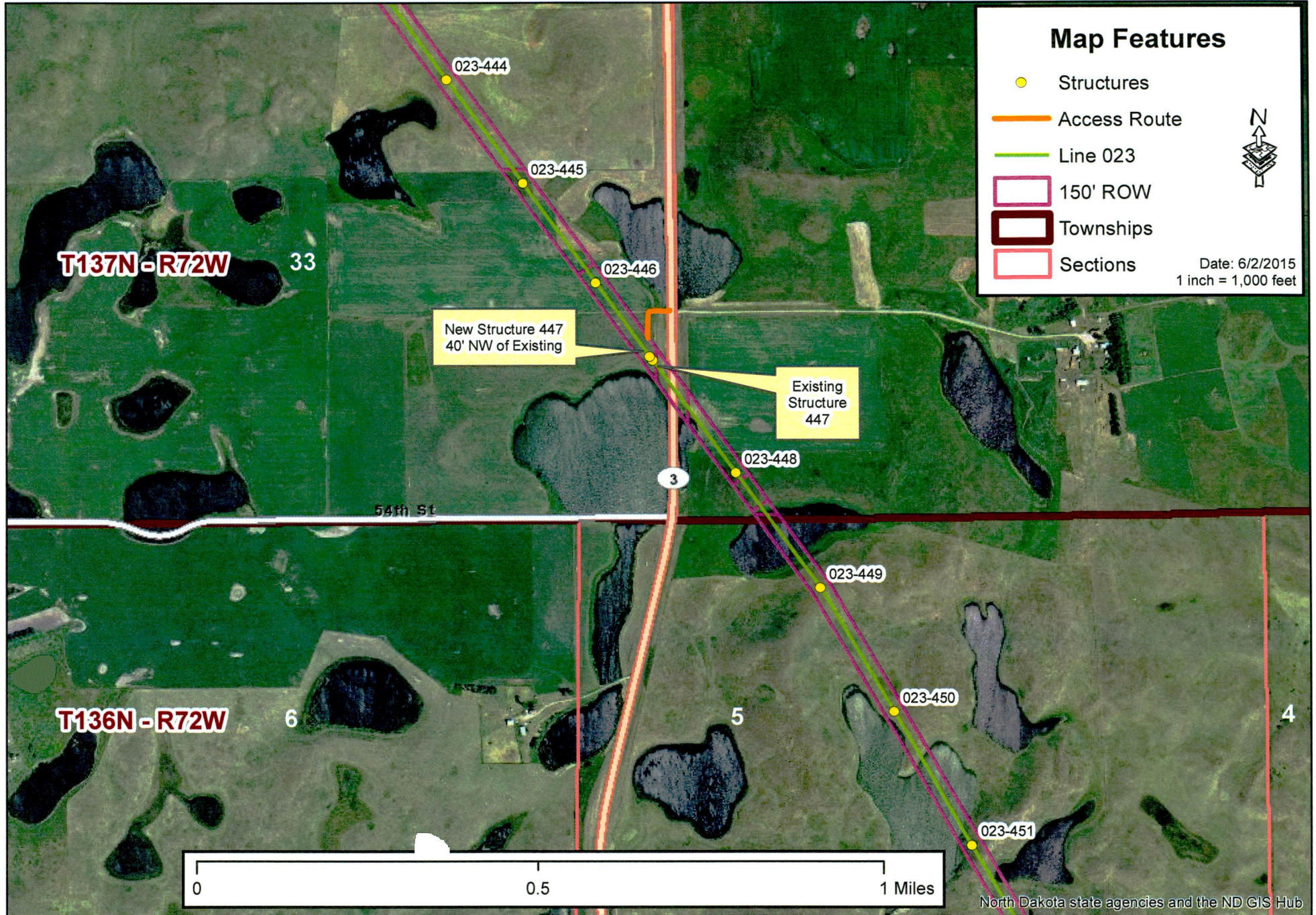
Jen Madison  
Environmental Project Coordinator

Enclosures

cc: Casey Jacobson, Basin Electric Power Cooperative  
Cris Miller, Basin Electric Power Cooperative  
Lyle Witham, Basin Electric Power Cooperative



# Structure 023-447 Location Map





**STATE  
HISTORICAL  
SOCIETY  
OF NORTH DAKOTA**

Jack Dalrymple  
*Governor of North Dakota*

**North Dakota  
State Historical Board**

Calvin Grinnell  
*New Town - President*

A. Ruric Todd III  
*Jamestown - Vice  
President*

Margaret Puetz  
*Bismarck - Secretary*

Albert I. Berger  
*Grand Forks*

Gereld Gerntholz  
*Valley City*

Diane K. Larson  
*Bismarck*

Chester E. Nelson, Jr.  
*Bismarck*

Sara Otte Coleman  
*Director  
Tourism Division*

Kelly Schmidt  
*State Treasurer*

Alvin A. Jaeger  
*Secretary of State*

Mark Zimmerman  
*Director  
Parks and Recreation  
Department*

Grant Levi  
*Director  
Department of  
Transportation*

Claudia J. Berg  
*Director*

*Accredited by the  
American Alliance  
of Museums since 1986*

May 28, 2015

Damita Engel  
Metcalf Archaeological Consultants, Inc.  
PO Box 2154  
Bismarck, ND 50502-2154

NDSHPO REF.: 15-1133 PSC Basin Electric Power Cooperative's 023-447  
Access Road Class III CRI  
[T137N R72W Section 33, Kidder County]

Dear Damita:

We have reviewed project correspondence and documentation for 15-1133 PSC Basin Electric Power Cooperative's 023-447 Access Road: A Class III Cultural Resource Inventory in Kidder County, North Dakota," by William Bluemle and Emily Sakariassen (Metcalf Archaeological Consultants, Inc., May 2015) and find it acceptable. We concur with "No Historic Properties Affected" and "No Significant Sites Affected" determinations provided the project is of the nature started and it takes place in the location plotted in the project documentation.

Thank you for the opportunity to review the project. If you have questions please contact either Paul Picha [ppicha@nd.gov](mailto:ppicha@nd.gov) at (701) 328-3574 or Susan Quinnell [squinnell@nd.gov](mailto:squinnell@nd.gov) at (701) 328-3576.

Sincerely,

Claudia J. Berg  
State Historic Preservation Officer (North Dakota)  
and  
Director, State Historical Society of North Dakota

c: Cris Miller, Basin Electric Power Cooperative