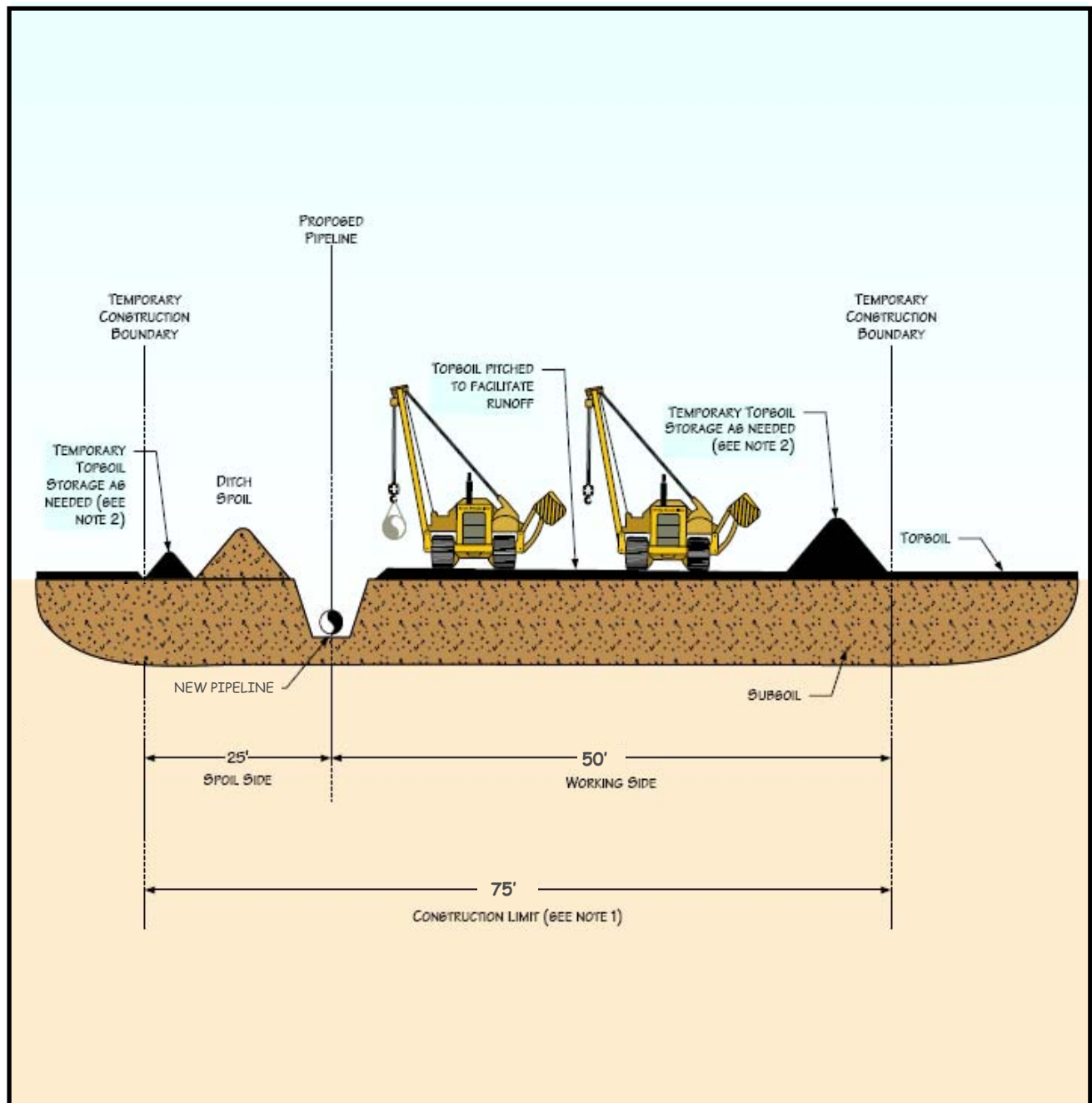


TAB 6 – Environmental Mitigation Plan Exhibits

- Figure 6.1.1 Typical Construction Layout
- Figure 6.1.2 Typical Topsoil Segregation – Ditch Plus Spoil Side
- Figure 6.1.3 Typical Topsoil Segregation – Full Right-of-Way
- Figure 6.1.4 Typical Topsoil Segregation – Trench Line Only
- Figure 6.1.5 Typical Temporary or Permanent Berms – Perspective View
- Figure 6.1.6 Typical Temporary or Permanent Berms – Elevation View
- Figure 6.1.7 Typical Silt Fence Installation
- Figure 6.1.8 Typical Straw Bale installation
- Figure 6.1.9 Typical Trench Breakers – Perspective View
- Figure 6.1.10 Typical Trench Breakers – Plan and Profile Views
- Figure 6.2.1 Typical Waterbody Crossing – Wet Trench Method
- Figure 6.2.2 Typical Waterbody Crossing – Dam and Pump Method
- Figure 6.2.3 Typical Waterbody Crossing – Flume Method
- Figure 6.2.4 Typical Waterbody Crossing – Directional Drill Method
- Figure 6.2.5 Typical Span Type Bridge
- Figure 6.2.6 Typical Rock and Flume Bridge
- Figure 6.2.7 Typical Dewatering Measures
- Figure 6.2.8 Typical Straw Bale Dewatering Structure
- Figure 6.3.1 Typical Wetland Crossing
- Figure 6.4.1 Typical Paved Road Crossing – Sediment Control
- Figure 6.7.1 Permanent Slope Breakers – Perspective View
- Figure 6.7.2 Erosion Control Blanket - Steep Slopes ($\geq 30\%$)
- Figure 6.7.3 Typical Final Stream Bank Stabilization – Rip Rap & Erosion Control



PROFILE

NOTES

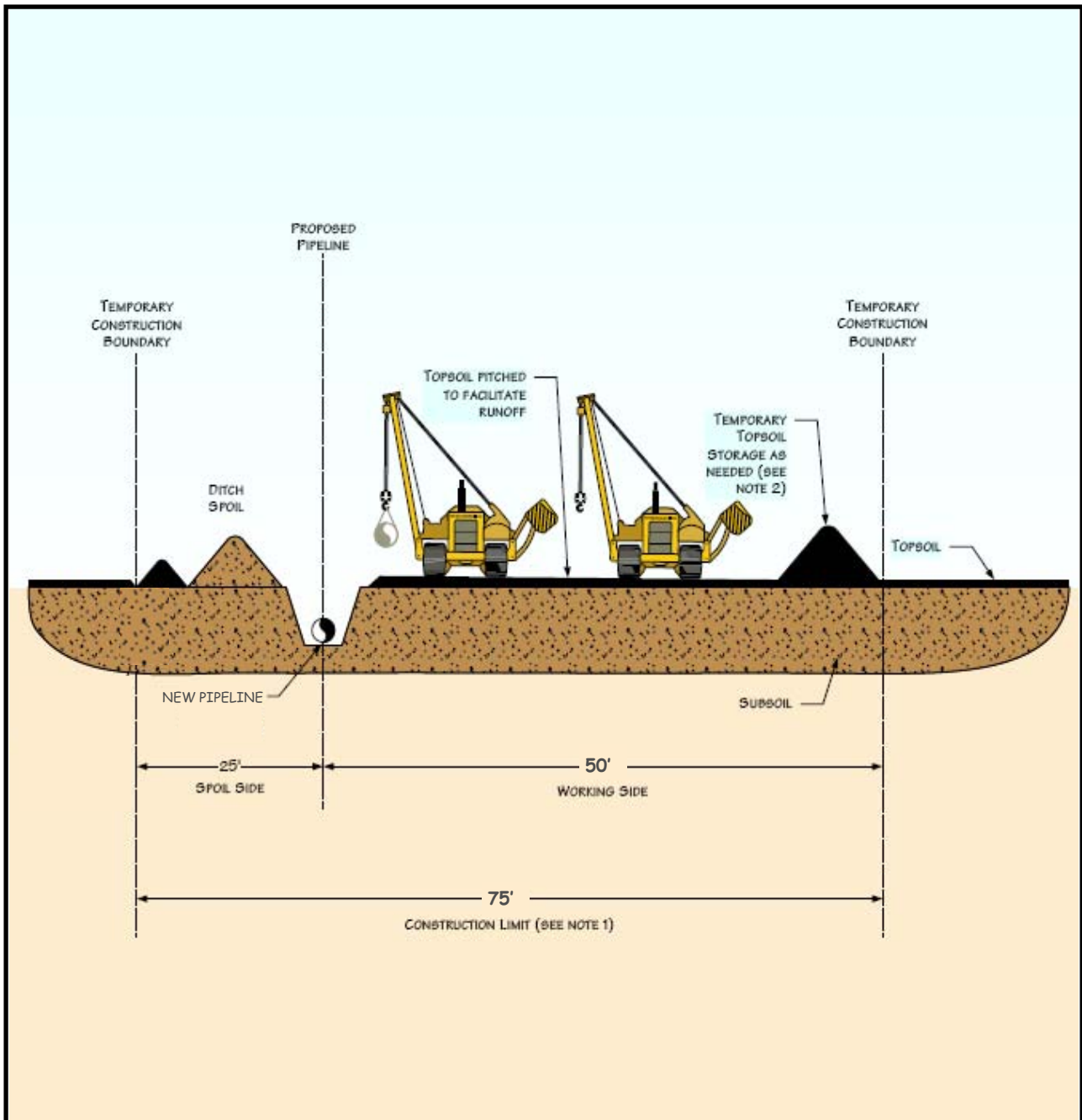
1. CONSTRUCTION LIMITS WILL TYPICALLY BE 75' WIDE. SPOIL SIDE WILL BE APPROXIMATELY 25' WIDE.
2. THIS DRAWING REFLECTS "DITCH PLUS SPOIL" TOPSOIL STRIPPING PROCEDURE. STOCKPILE TOPSOIL SEPARATELY FROM DITCH SOIL SHOWN OR IN OTHER CONFIGURATION APPROVED BY COMPANY.
3. THE OFFSET FROM OUTERMOST EXISTING PIPELINE WILL BE 25' FOR MOST LOCATIONS BUT MAY BE INCREASED OR DECREASED DEPENDING ON THE SITE SPECIFIC CONSTRUCTION REQUIREMENTS.



Hiland Crude, LLC
 302 N Independence St.
 STE 100
 Enid, Oklahoma 73701
 508-242-6040

Figure 6.1.1 – Typical Construction Layout

New Town Extension Crude Oil Pipeline
 Mountrail County



PROFILE

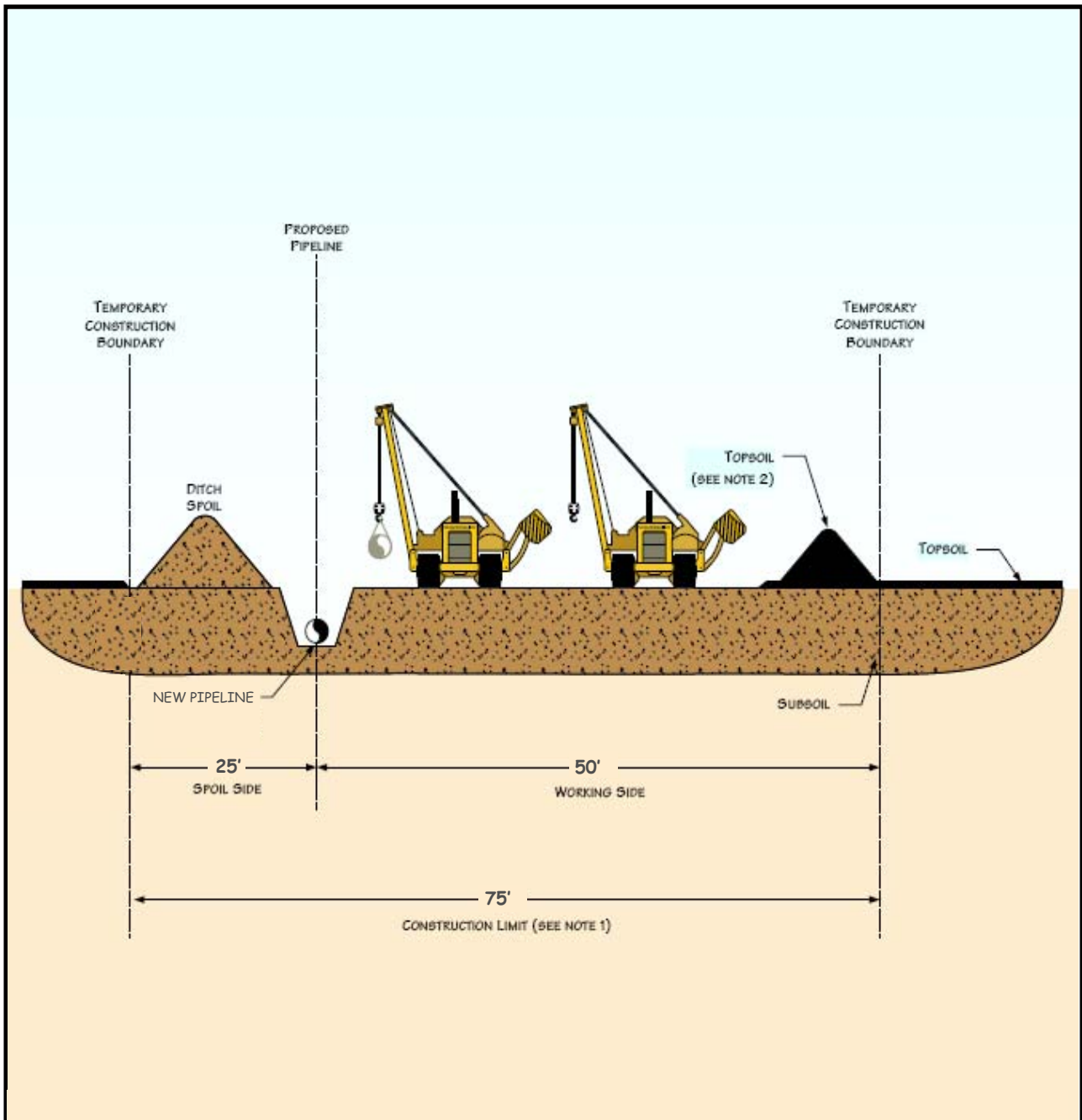
NOTES

1. CONSTRUCTION LIMITS WILL TYPICALLY BE 75' WIDE. SPOIL SIDE WILL BE APPROXIMATELY 25' WIDE.
2. THIS DRAWING REFLECTS "DITCH PLUS SOIL" TOPSOIL STRIPPING PROCEDURE. STOCKPILE TOPSOIL SEPARATELY FROM DITCH SOIL SHOWN OR IN OTHER CONFIGURATION APPROVED BY COMPANY.
3. THE OFFSET FROM OUTERMOST EXISTING PIPELINE WILL BE 25' FOR MOST LOCATIONS BUT MAY BE INCREASED OR DECREASED DEPENDING ON THE SITE SPECIFIC CONSTRUCTION REQUIREMENTS.



Hiland Crude, LLC
 302 N Independence St.
 STE 100
 Enid, Oklahoma 73701
 508-242-6040

Figure 6.1.2 – Typical Topsoil Segregation Ditch Plus Spoil Side
 New Town Extension Crude Oil Pipeline
 Mountrail County



PROFILE

NOTES

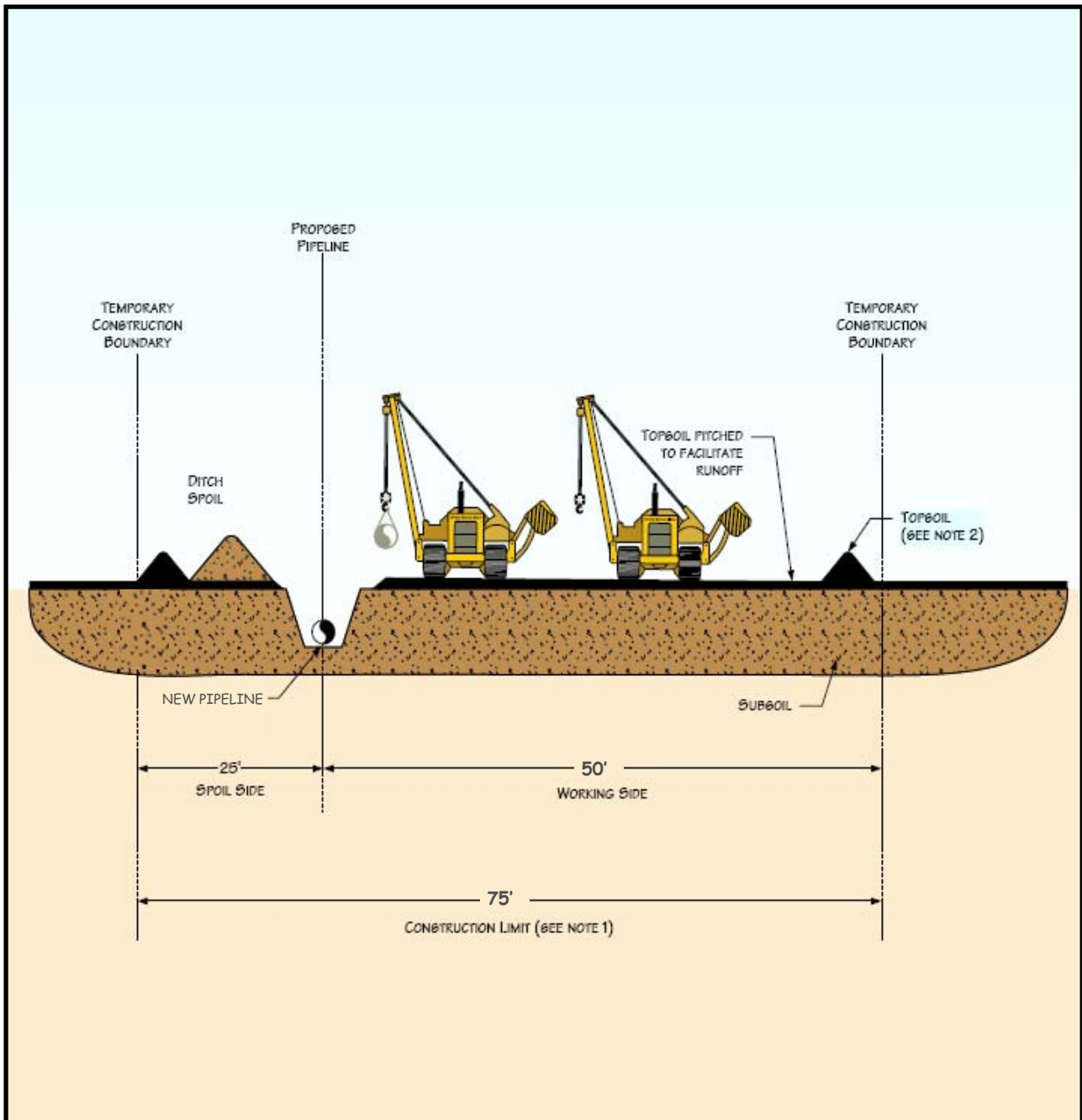
1. CONSTRUCTION LIMITS WILL TYPICALLY BE 75' WIDE. SPOIL SIDE WILL BE APPROXIMATELY 25' WIDE.
2. THIS DRAWING REFLECTS "FULL RIGHT OF WAY" TOPSOIL STRIPPING PROCEDURE. STOCKPILE TOPSOIL SEPARATELY FROM DITCH SOIL SHOWN OR IN OTHER CONFIGURATION APPROVED BY COMPANY.
3. THE OFFSET FROM OUTERMOST EXISTING PIPELINE WILL BE 25' FOR MOST LOCATIONS BUT MAY BE INCREASED OR DECREASED DEPENDING ON THE SITE SPECIFIC CONSTRUCTION REQUIREMENTS.



Hiland Crude, LLC
 302 N Independence St.
 STE 100
 Enid, Oklahoma 73701
 508-242-6040

Figure 6.1.3 – Typical Topsoil Segregation Full Right-of-Way

New Town Extension Crude Oil Pipeline
 Mountrail County



PROFILE

NOTES

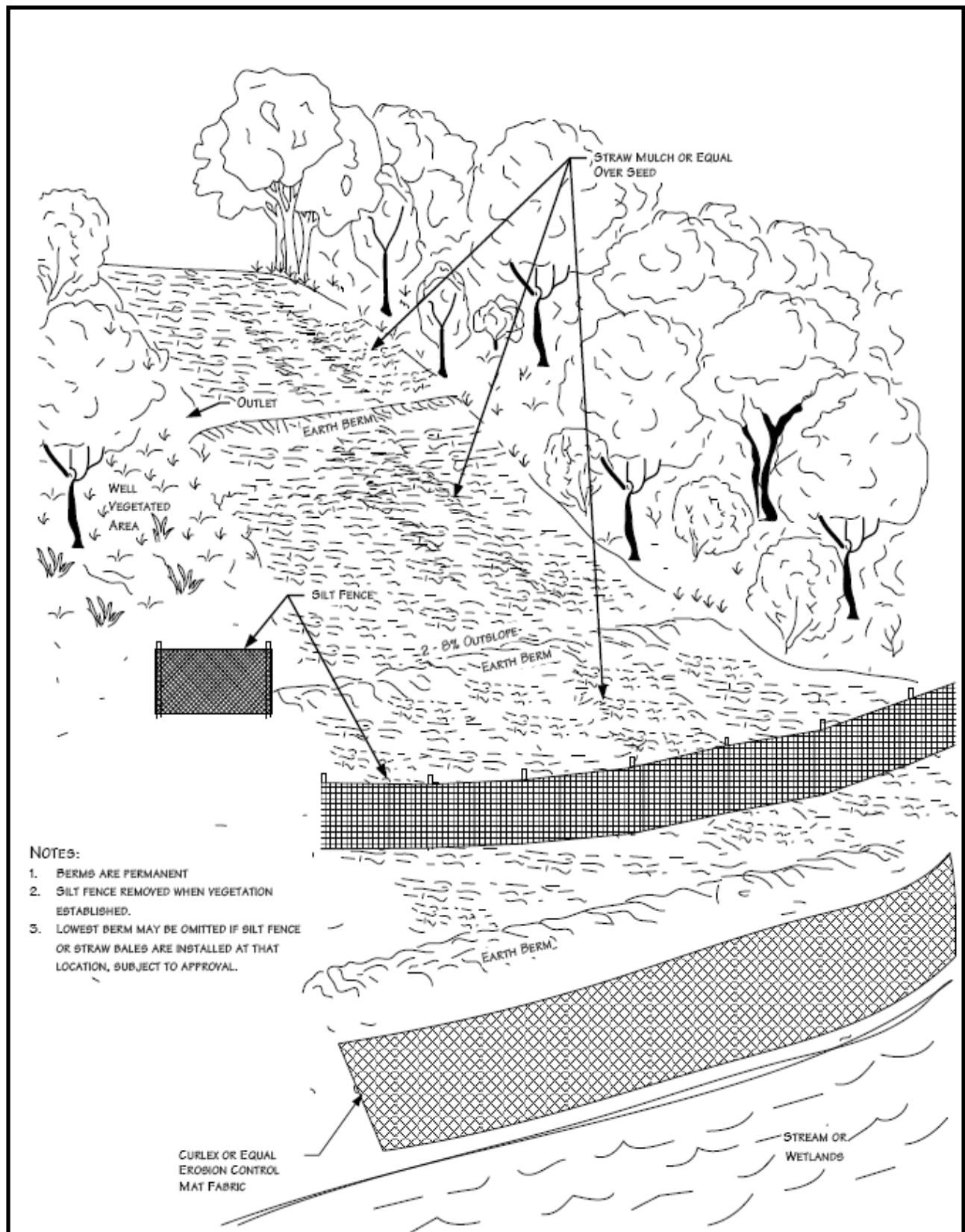
1. CONSTRUCTION LIMITS WILL TYPICALLY BE 75' WIDE. SPOIL SIDE WILL BE APPROXIMATELY 25' WIDE.
2. THIS DRAWING REFLECTS "TRENCH LINE ONLY" TOPSOIL STRIPPING PROCEDURE. STOCKPILE TOPSOIL SEPARATELY FROM DITCH SOIL SHOWN OR IN OTHER CONFIGURATION APPROVED BY COMPANY.
3. THE OFFSET FROM OUTERMOST EXISTING PIPELINE WILL BE 25' FOR MOST LOCATIONS BUT MAY BE INCREASED OR DECREASED DEPENDING ON THE SITE SPECIFIC CONSTRUCTION REQUIREMENTS.



Hiland Crude, LLC
 302 N Independence St.
 STE 100
 Enid, Oklahoma 73701
 508-242-6040

Figure 6.1.4 – Typical Topsoil Segregation Trench Line Only

New Town Extension Crude Oil Pipeline
 Mountrail County



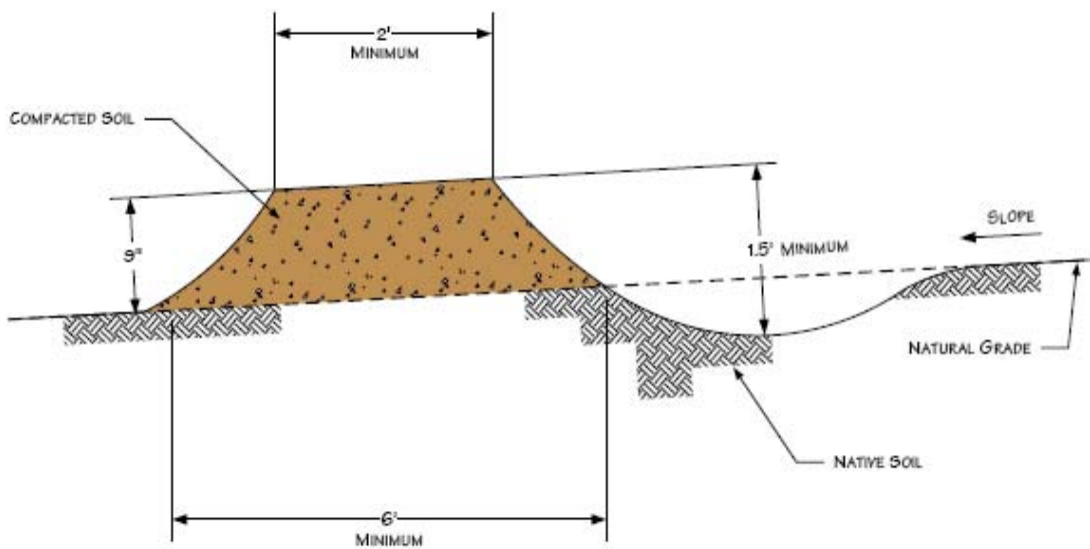
NOTES:

1. BERMS ARE PERMANENT
2. SILT FENCE REMOVED WHEN VEGETATION ESTABLISHED.
3. LOWEST BERM MAY BE OMITTED IF SILT FENCE OR STRAW BALES ARE INSTALLED AT THAT LOCATION, SUBJECT TO APPROVAL.



Hiland Crude, LLC
 302 N Independence St.
 STE 100
 Enid, Oklahoma 73701
 508-242-6040

Figure 6.1.5 – Typical Temporary or Permanent Berms-Perspective View
 New Town Extension Crude Oil Pipeline
 Mountrail County



NOTES

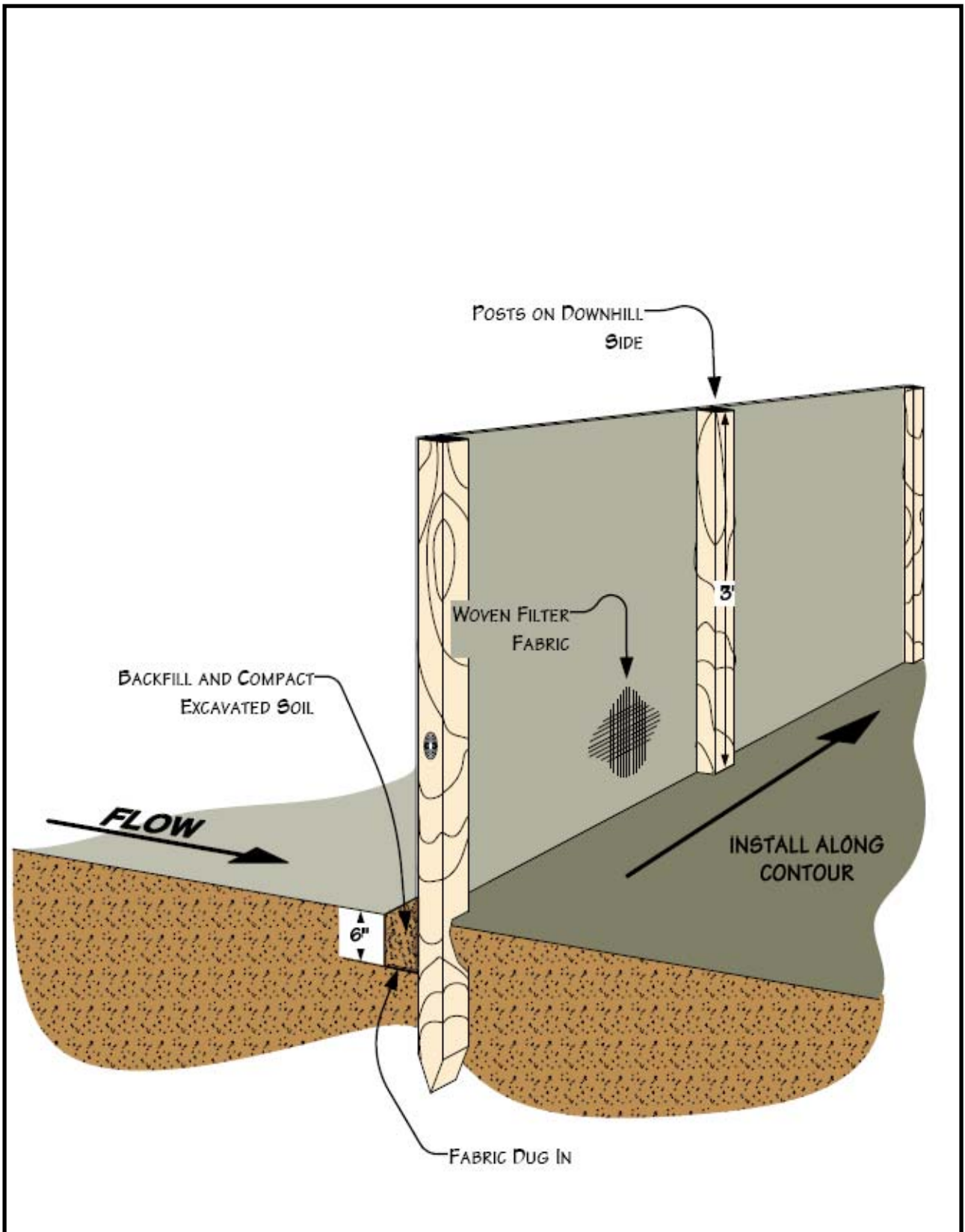
1. BERMS SHALL BE CONSTRUCTED WITH 2 TO 3 PERCENT OUTSLOPE.
2. BERMS SHALL BE OUTLETED TO WELL VEGETATED STABLE AREAS, SILT FENCES, STRAW/HAY BALES OR ROCK APRONS.
3. BERMS SHALL BE SPACED AS DESCRIBED IN CONSTRUCTION SPECIFICATIONS.
4. ADDITIONAL INFORMATION INCLUDED ON OTHER DRAWINGS.



Hiland Crude, LLC
 302 N Independence St.
 STE 100
 Enid, Oklahoma 73701
 508-242-6040

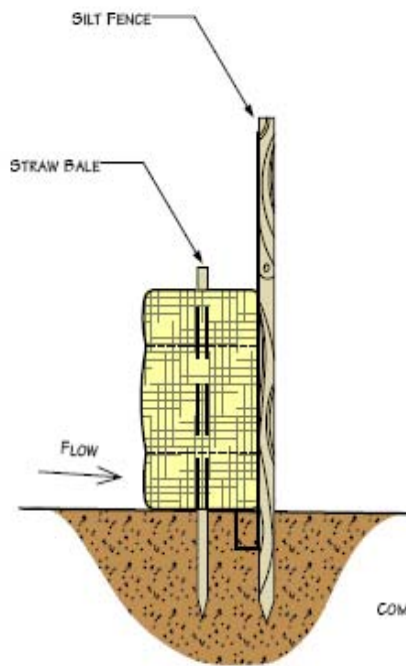
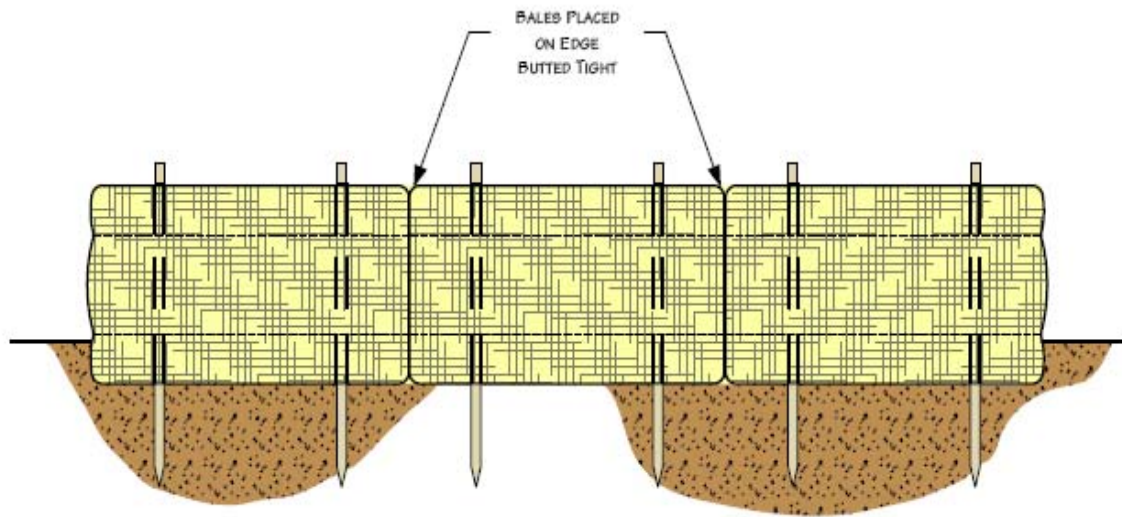
Figure 6.1.6 – Typical Temporary or Permanent Berm-Elevation View

New Town Extension Crude Oil Pipeline
 Mountrail County

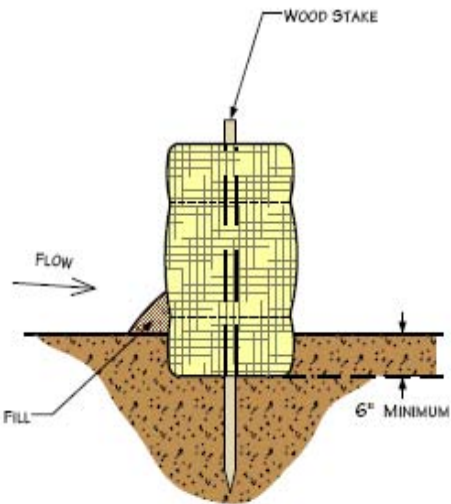


Hiland Crude, LLC
 302 N Independence St.
 STE 100
 Enid, Oklahoma 73701
 508-242-6040

Figure 6.1.7 – Typical Silt Fence Installation
 New Town Extension Crude Oil Pipeline
 Mountrail County



STRAW/HAY BALES & SILT FENCE

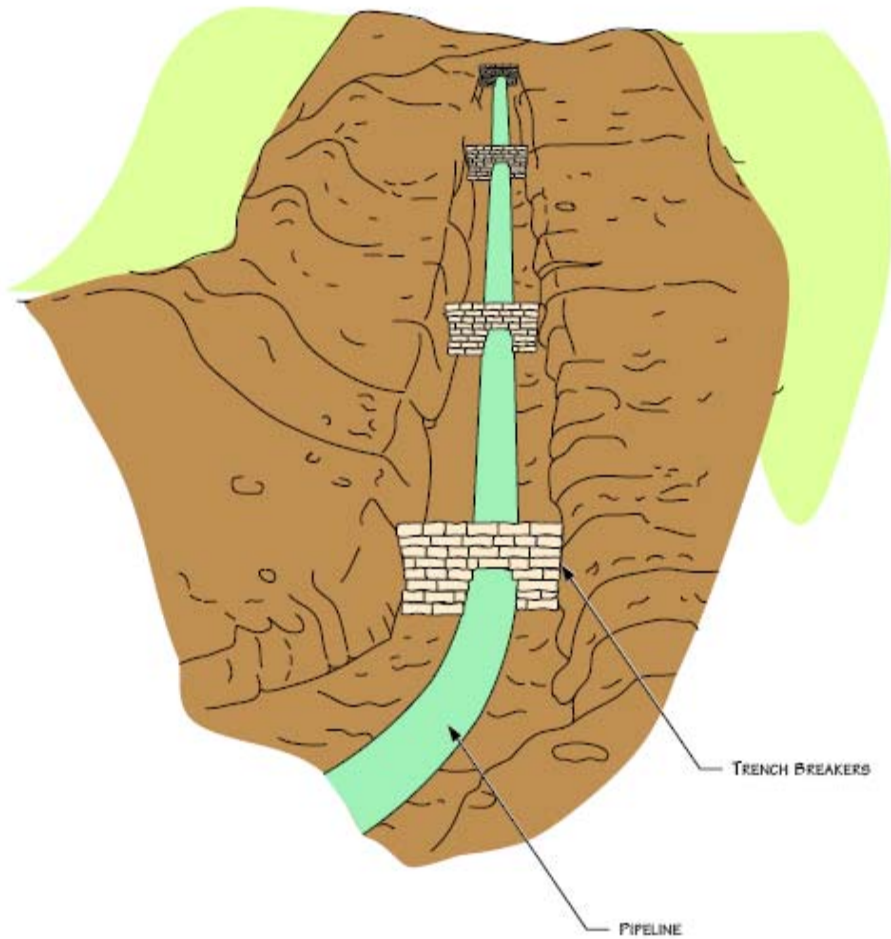


STRAW/HAY BALES ONLY



Hiland Crude, LLC
 302 N Independence St.
 STE 100
 Enid, Oklahoma 73701
 508-242-6040

Figure 6.1.8 –Straw Bale Installation
 New Town Extension Crude Oil Pipeline
 Mountrail County



NOTES

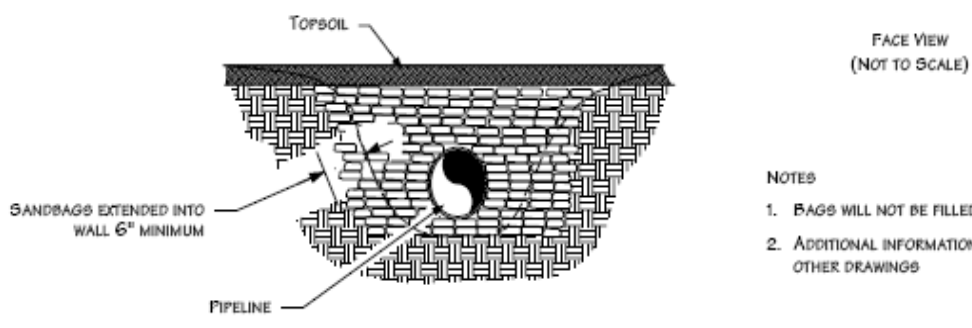
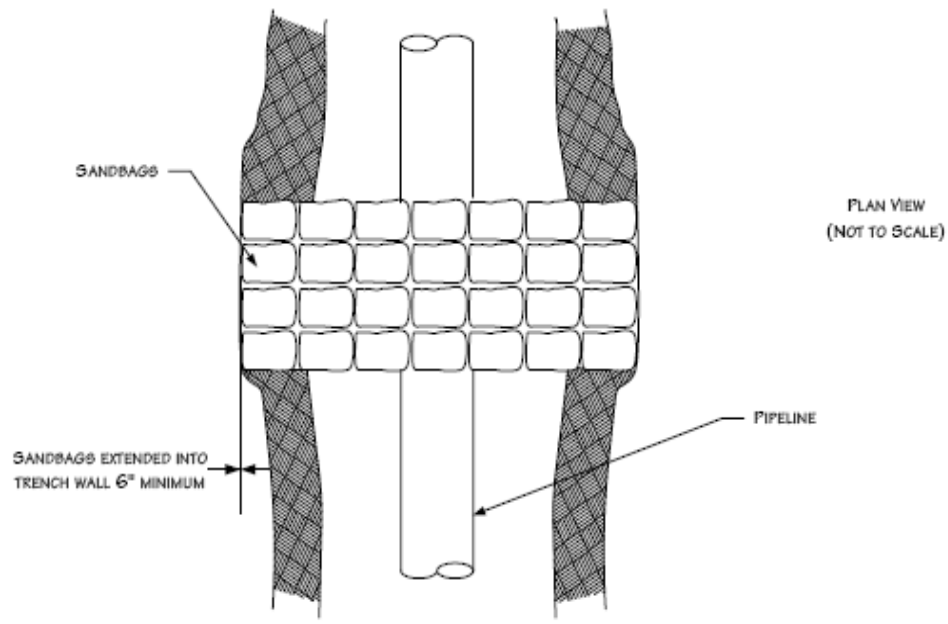
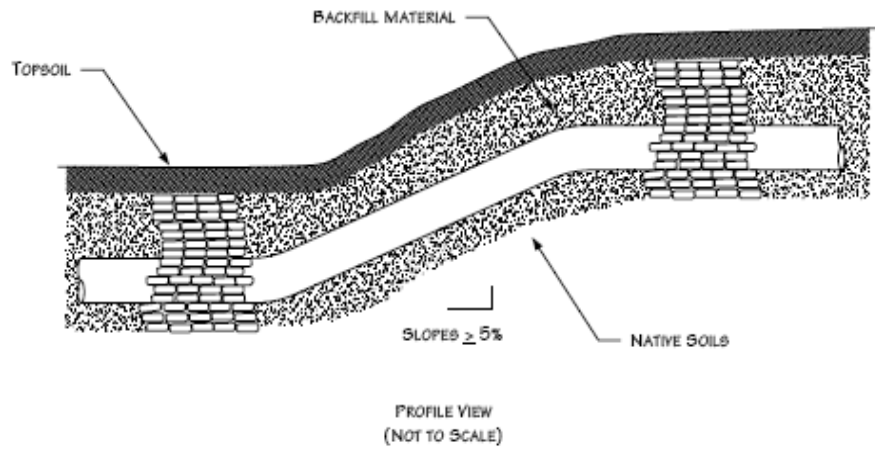
1. BAGS WILL NOT BE FILLED WITH TOPSOIL.
2. ADDITIONAL INFORMATION INCLUDED ON OTHER DRAWINGS.



Hiland Crude, LLC
302 N Independence St.
STE 100
Enid, Oklahoma 73701
508-242-6040

**Figure 6.1.9 Typical Trench Breaker
(Perspective View)**

New Town Extension Crude Oil Pipeline
Mountrail County

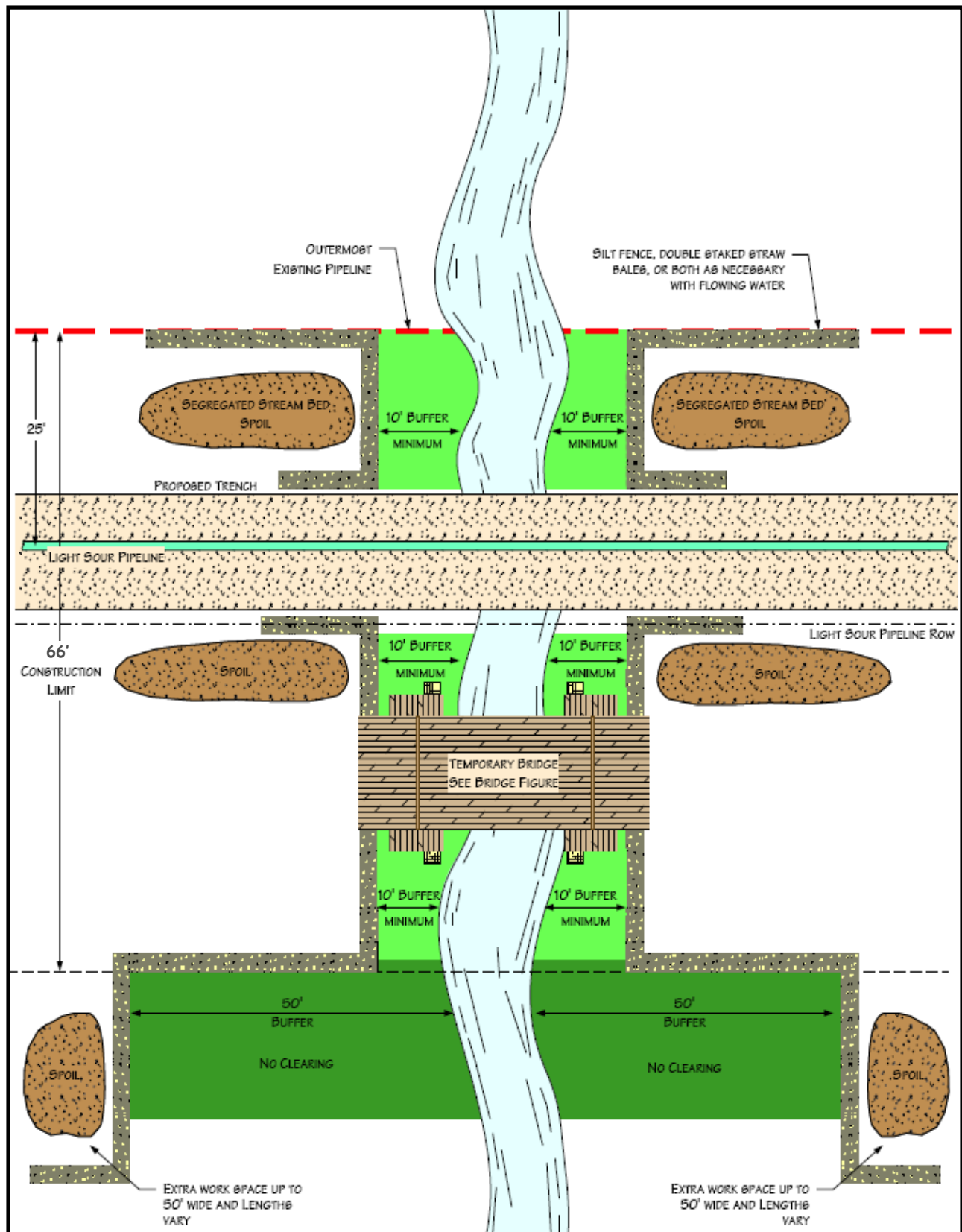


- NOTES
1. BAGS WILL NOT BE FILLED WITH TOPSOIL
 2. ADDITIONAL INFORMATION INCLUDED ON OTHER DRAWINGS



Hiland Crude, LLC
 302 N Independence St.
 STE 100
 Enid, Oklahoma 73701
 508-242-6040

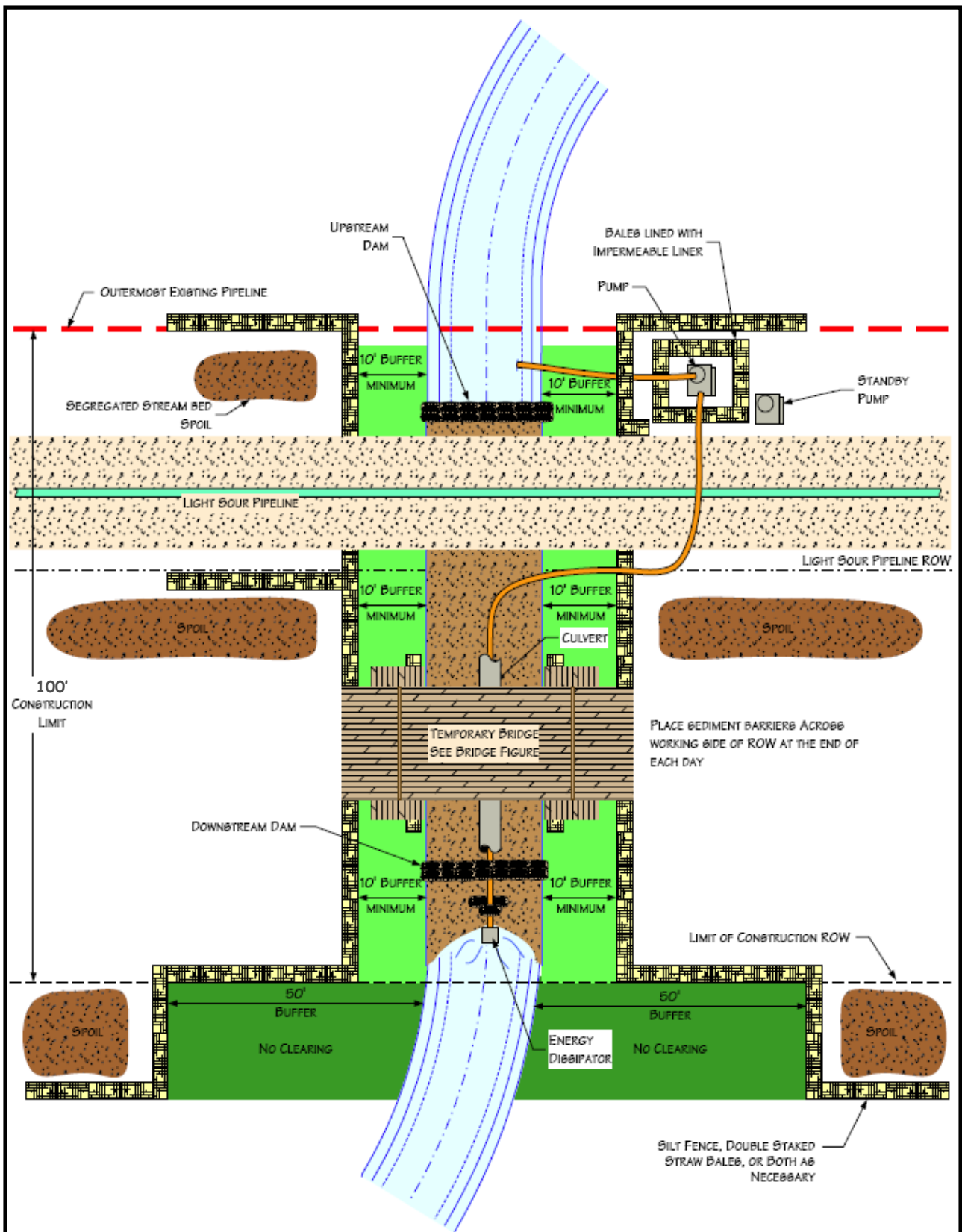
**Figure 6.1.10 – Typical Trench Breaker
 Plan and Profile View**
 New Town Extension Crude Oil Pipeline
 Mountrail County



Hiland Crude, LLC
 302 N Independence St.
 STE 100
 Enid, Oklahoma 73701
 508-242-6040

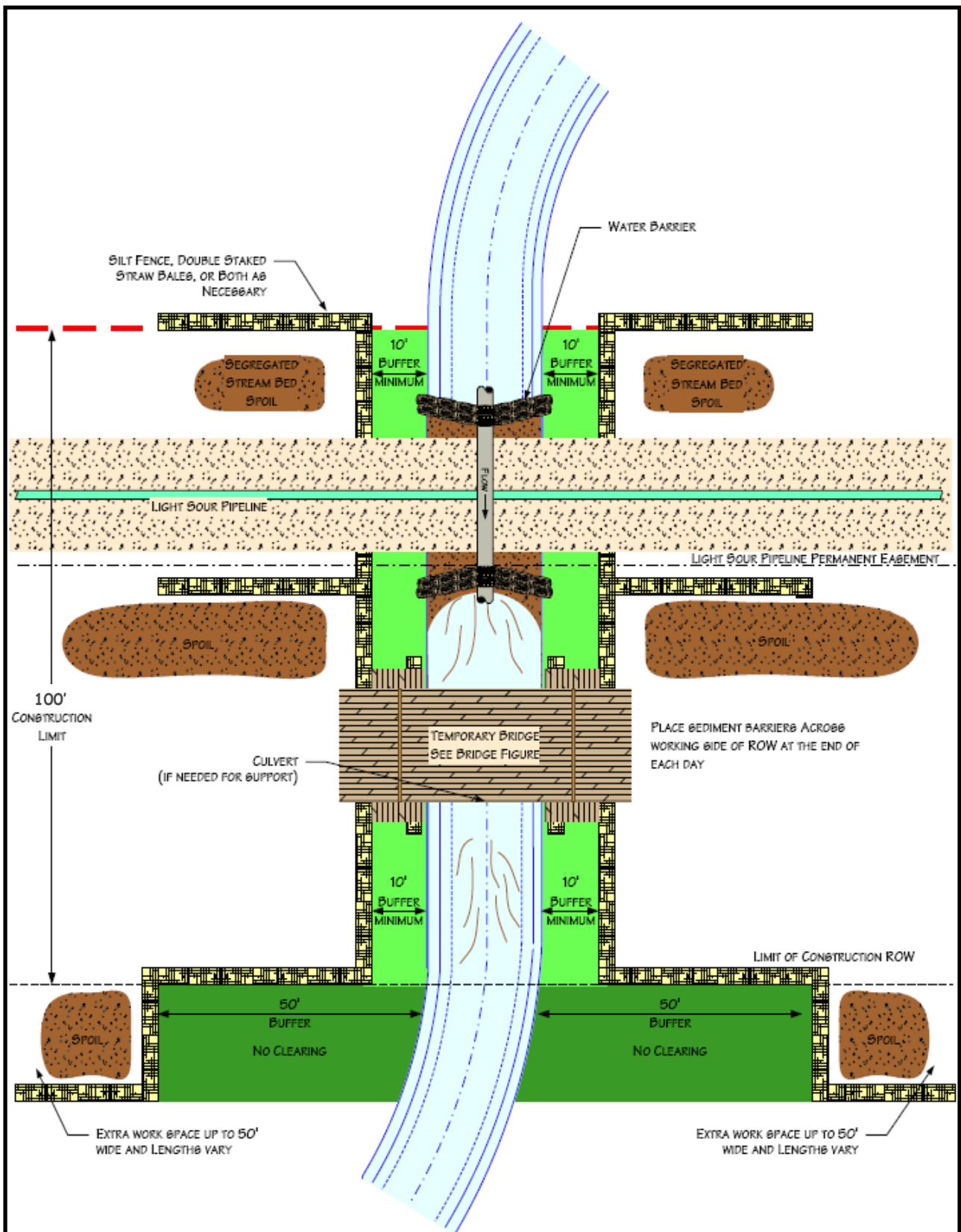
Figure 6.2.1 – Typical Waterbody Crossing Wet Trench Method

New Town Extension Crude Oil Pipeline
 Mountrail County



Hiland Crude, LLC
 302 N Independence St.
 STE 100
 Enid, Oklahoma 73701
 508-242-6040

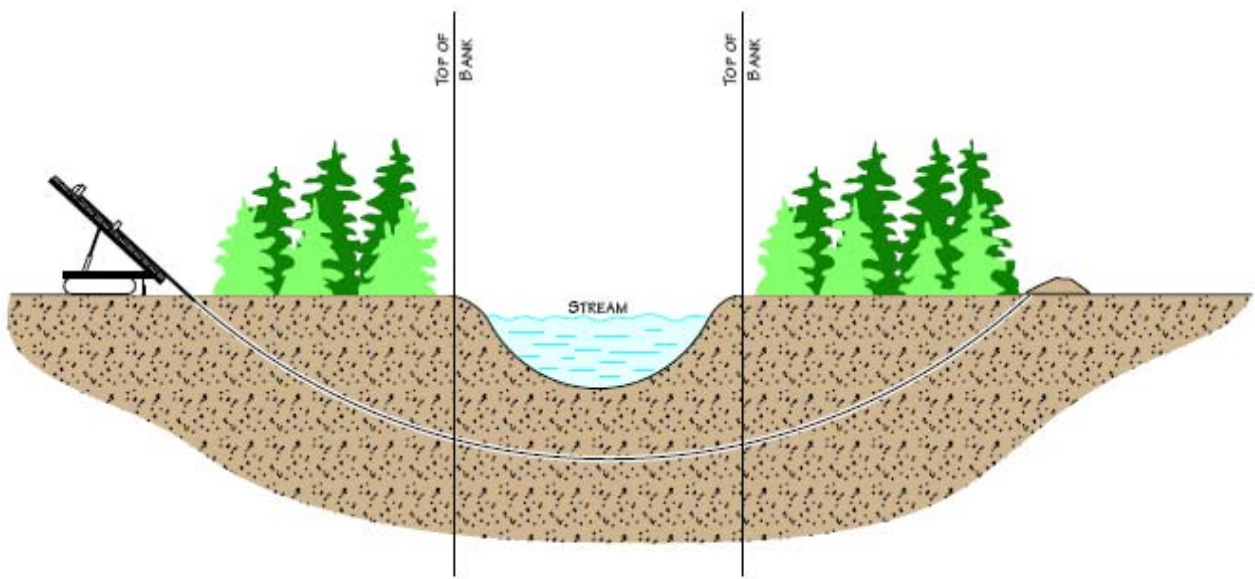
Figure 6.2.2 Typical Waterbody Crossing Dam and Pump Method
 New Town Extension Crude Oil Pipeline
 Mountrail County



Hiland Crude, LLC
 302 N Independence St.
 STE 100
 Enid, Oklahoma 73701
 508-242-6040

Figure 6.2.3 – Typical Waterbody Crossing Flume Method

New Town Extension Crude Oil Pipeline
 Mountrail County

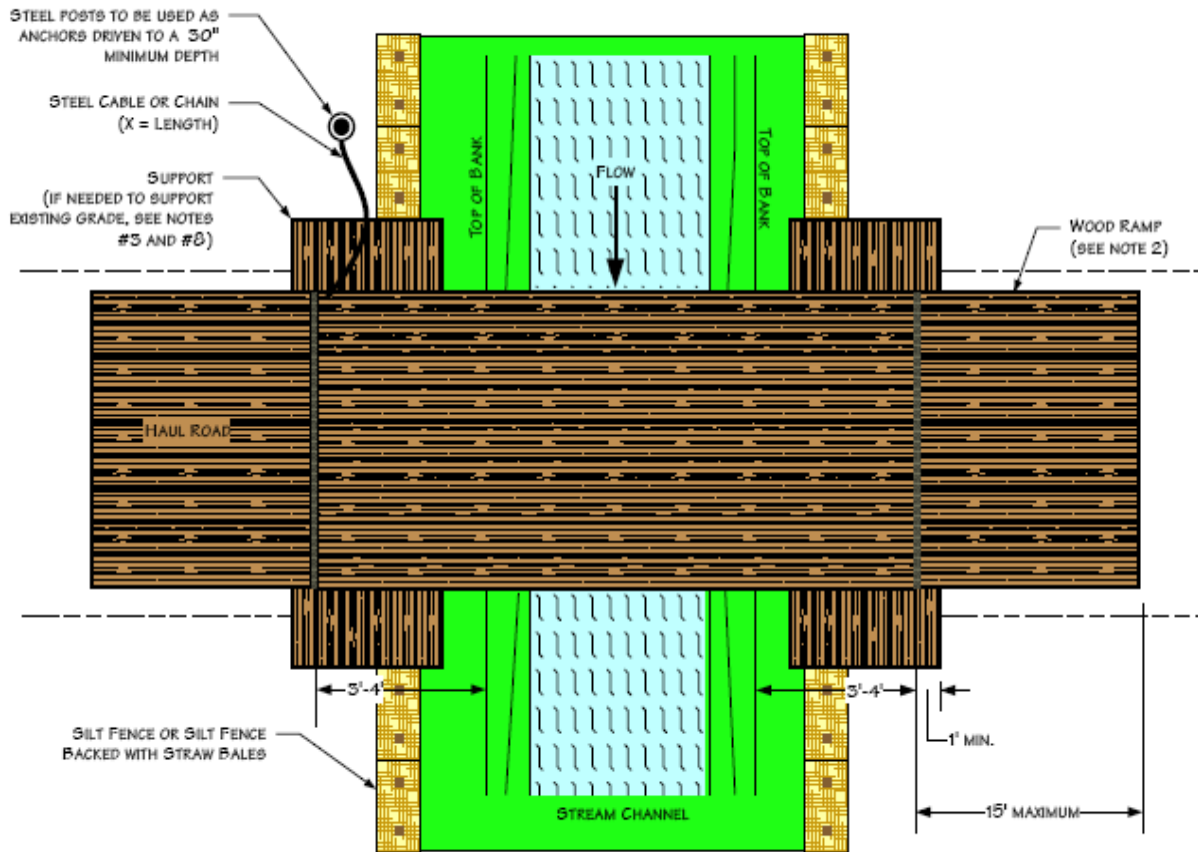


Hiland Crude, LLC
 302 N Independence St.
 STE 100
 Enid, Oklahoma 73701
 508-242-6040

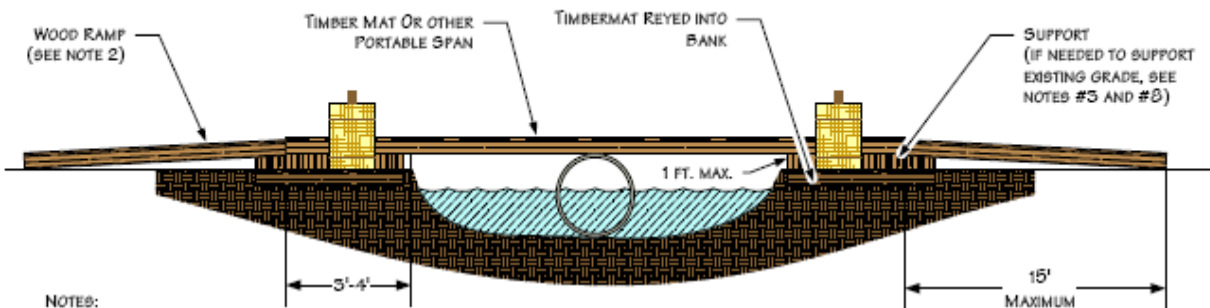
**Figure 6.2.4 –Typical Waterbody Crossing
 Directional Drill Method**

New Town Extension Crude Oil Pipeline
 Mountrail County

Plan View



Profile View



NOTES:

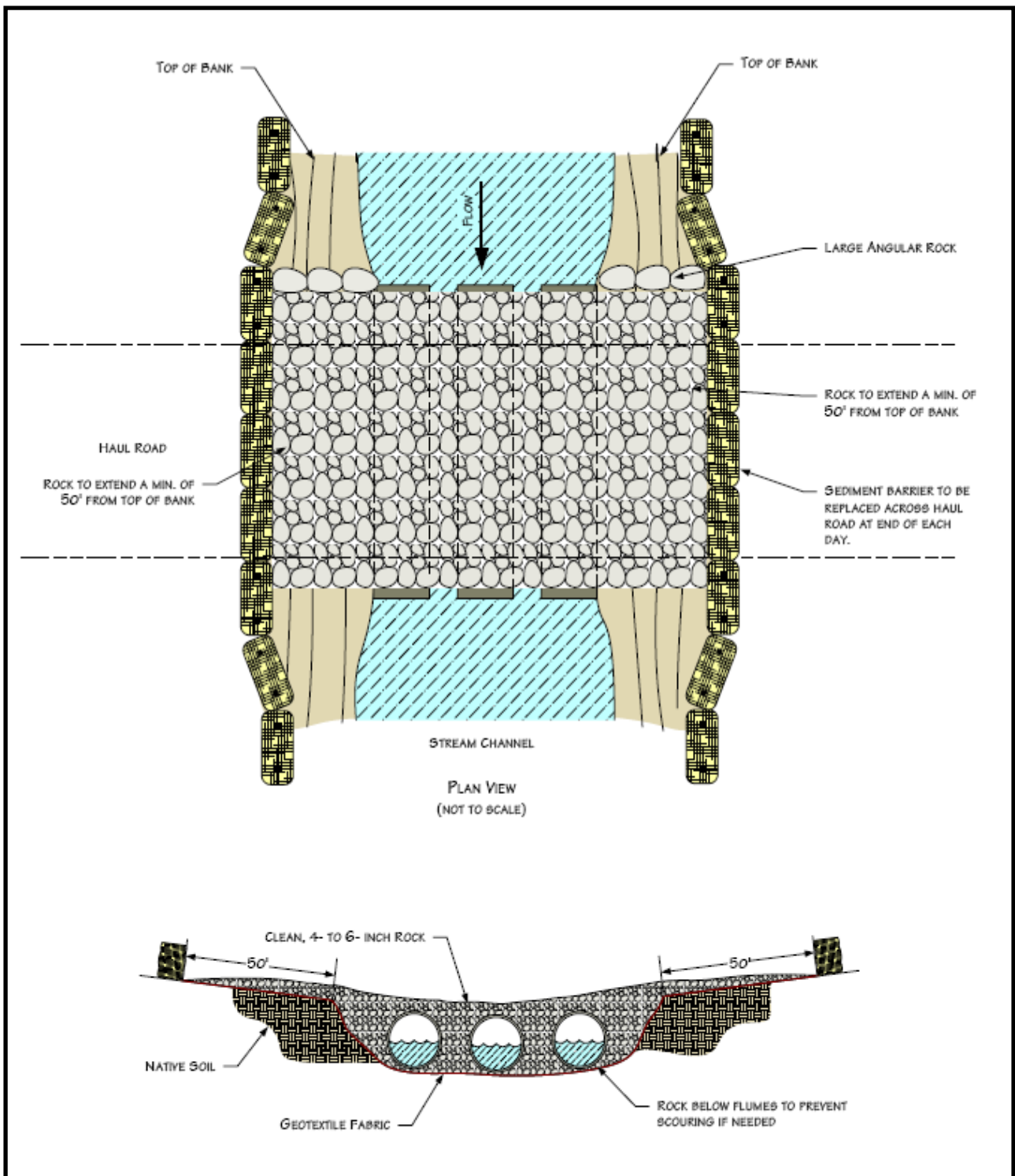
1. INSPECT BRIDGE OPENING PERIODICALLY AND FOLLOWING RAINFALLS OF OVER $\frac{1}{8}$ ". REMOVE ANY DEBRIS RESTRICTING FLOW AND DEPOSIT IT AT AN UPLAND SITE OUTSIDE OF FLOODPLAIN.
2. IF PHYSICAL CIRCUMSTANCES PROHIBIT WOOD OR METAL RAMPS, EARTHEN RAMPS MAY BE USED AS APPROVED.
3. INSPECT BRIDGE ELEVATION SO BRIDGE REMAINS SUPPORTED ABOVE HIGH BANK AND DOES NOT SINK INTO BANK.
4. THE CULVERT SUPPORT MUST BE ANCHORED TO THE STREAM BOTTOM AND MAY NOT BE SUPPORTED WITH FILL.
5. EARTHEN RAMP CANNOT BE TALLER THAN 1' AND CANNOT EXTEND FOR MORE THAN 15' ON EITHER SIDE OF THE CROSSING.
6. THE BRIDGE MUST SPAN FROM TOP OF BANK TO TOP OF BANK.
7. THE BRIDGE MUST BE FIRMLY ANCHORED TO PREVENT IT FROM BEING TRANSPORTED DOWNSTREAM DURING HIGH FLOW.
8. ADDITIONAL SUPPORT MUST BE ADDED ON TOP OF BANK AND UNDER SPAN IF INITIAL SUPPORT STARTS TO SETTLE.
9. EROSION AND SEDIMENTATION CONTROL MEASURES SHALL BE INSPECTED AND MAINTAINED IN ACCORDANCE WITH THE COMPANY'S ENVIRONMENTAL MITIGATION PLAN.



Hiland Crude, LLC
 302 N Independence St.
 STE 100
 Enid, Oklahoma 73701
 508-242-6040

Figure 6.2.5 – Typical Span Type Bridge With or Without Instream Support

New Town Extension Crude Oil Pipeline
 Mountrail County



NOTES:

1. STEEL FLUME PIPE(S) SIZED TO ALLOW FOR STREAM FLOW AND EQUIPMENT LOAD.
2. STRAW BALES SHALL BE PLACED ACROSS BRIDGE ENTRANCE EVERY NIGHT.
3. ADDITIONAL INFORMATION INCLUDED ON OTHER DRAWINGS.



Hiland Crude, LLC
 302 N Independence St.
 STE 100
 Enid, Oklahoma 73701
 508-242-6040

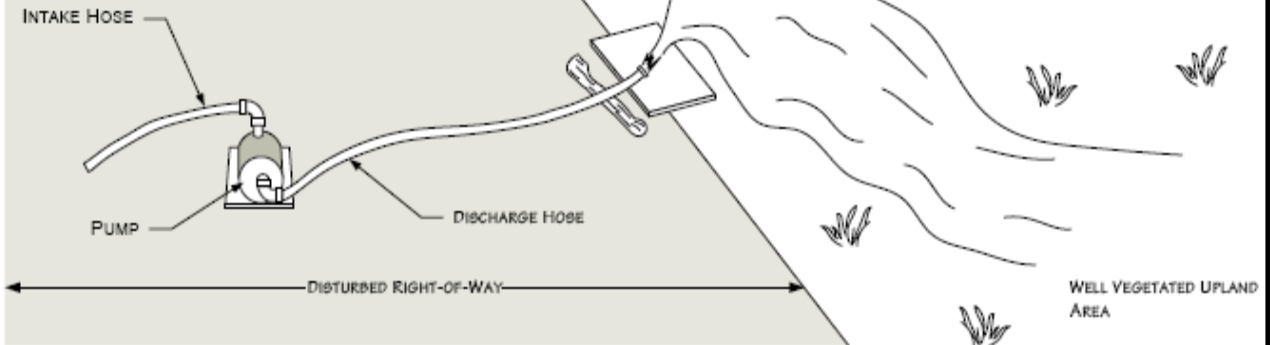
Figure 6.2.6 – Typical Rock Flume Bridge

New Town Extension Crude Oil Pipeline
 Mountrail County

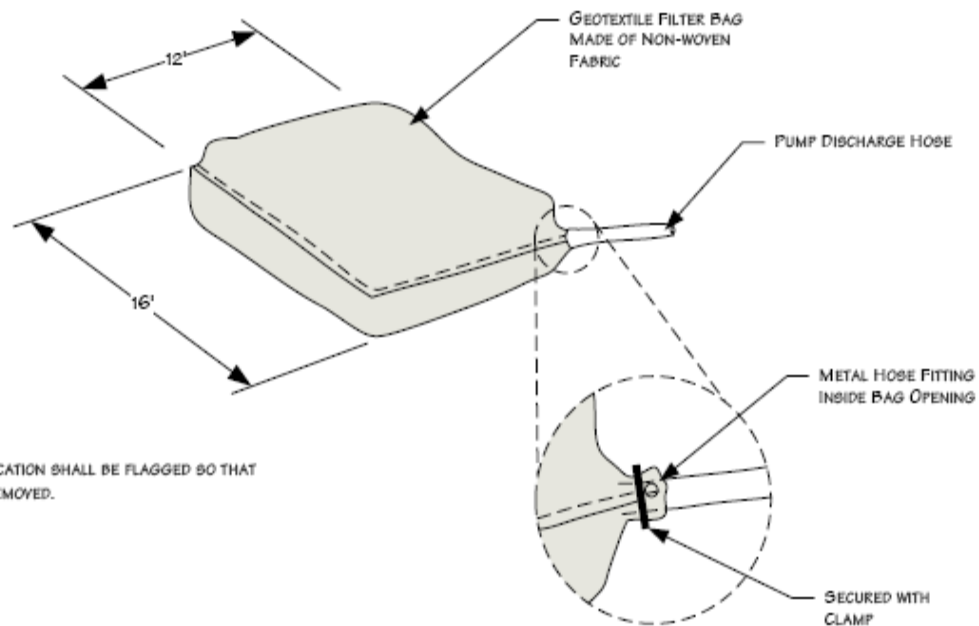
DEWATERING DISCHARGE IN WELL VEGETATED UPLANDS

NOTES:

1. PUMP INTAKE HOSE MUST BE SECURED AT LEAST ONE FOOT ABOVE THE TRENCH BOTTOM.
2. IF VEGETATION IS SPARSE, DEWATER INTO GEOTEXTILE FILTER BAG OR STRAW BALE DEWATERING STRUCTURE.



GEOTEXTILE FILTER BAG



NOTE:

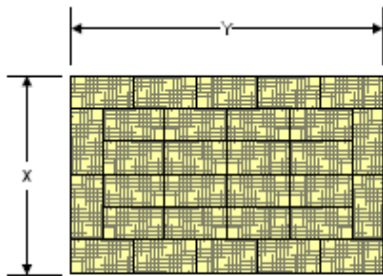
1. FILTER BAG LOCATION SHALL BE FLAGGED SO THAT BAG CAN BE REMOVED.



Hiland Crude, LLC
 302 N Independence St.
 STE 100
 Enid, Oklahoma 73701
 508-242-6040

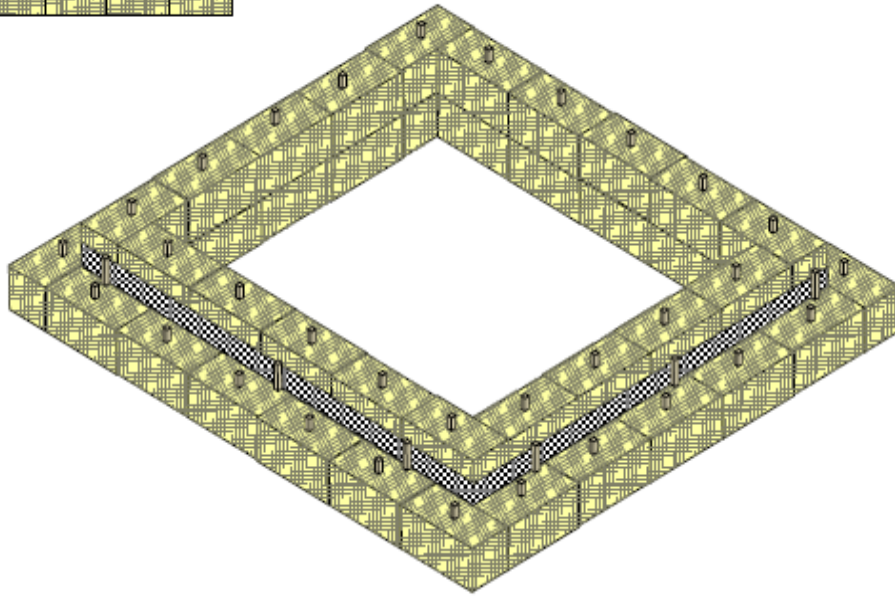
Figure 6.2.7– Typical Dewatering Measures

New Town Extension Crude Oil Pipeline
 Mountrail County

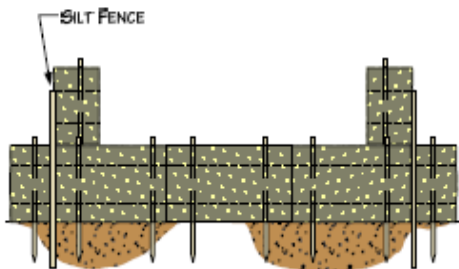


NOTES

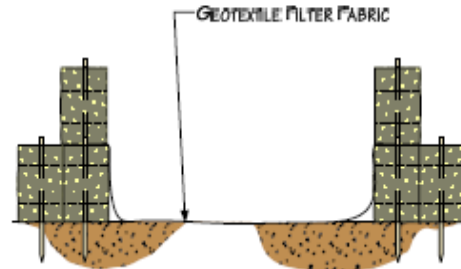
1. ARRANGE THE STRAW BALES TO THE X AND Y DIMENSIONS AS SPECIFIED BELOW.
2. IF BOTTOM OF STRUCTURE IS NOT LINED WITH STRAW BALES (OPTION 1), LINE ENTIRE STRUCTURE WITH GEOTEXTILE FILTER FABRIC.



PERSPECTIVE VIEW



OPTION 1



OPTION 2

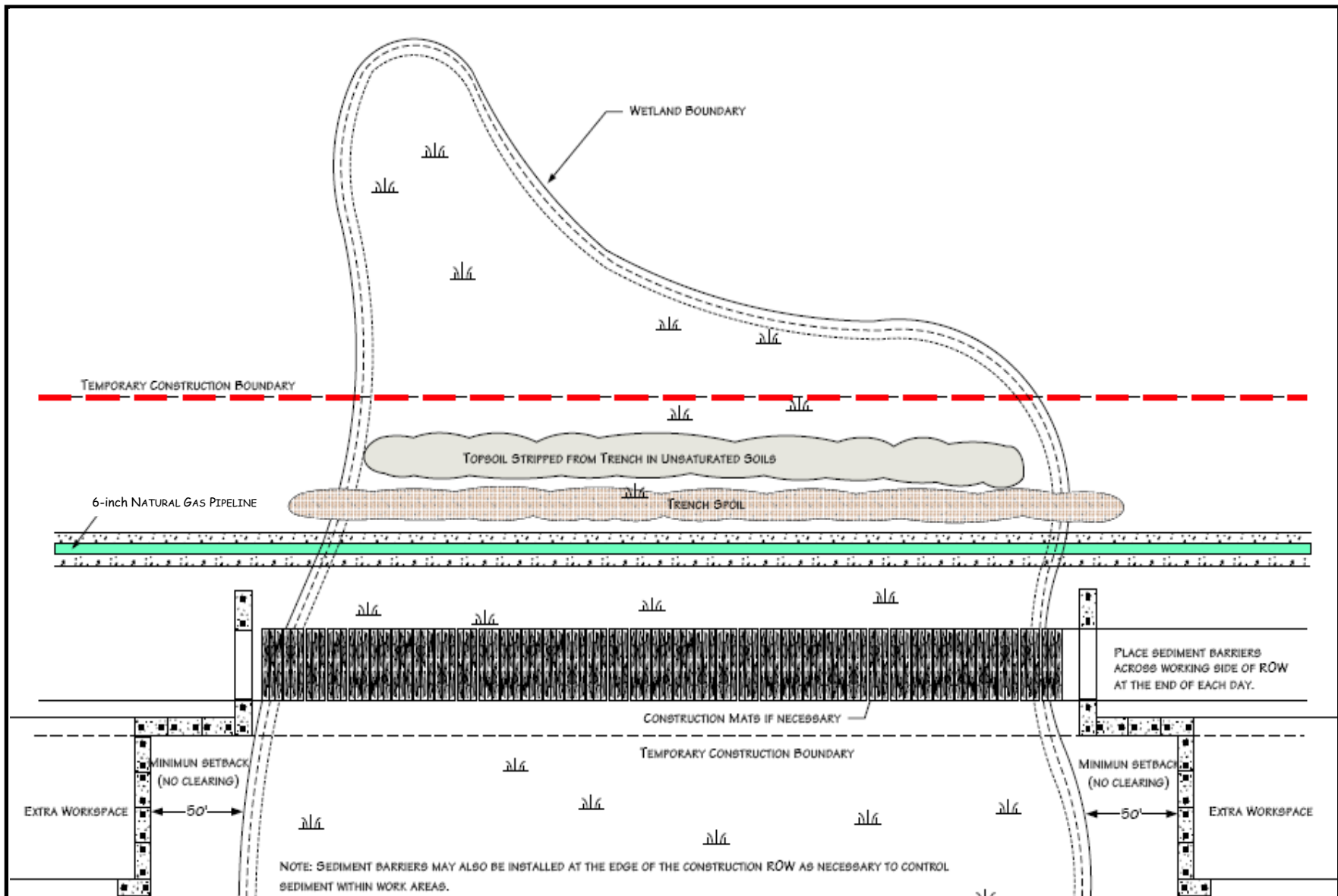
MINIMUM SUMP DIMENSIONS (FEET)		MAXIMUM PUMPING RATE GALLONS PER MINUTE
X	Y	
10	20	300
15	20	350
20	20	400
20	25	450
25	25	500
25	30	550
30	30	660



Hiland Crude, LLC
302 N Independence St.
STE 100
Enid, Oklahoma 73701
508-242-6040

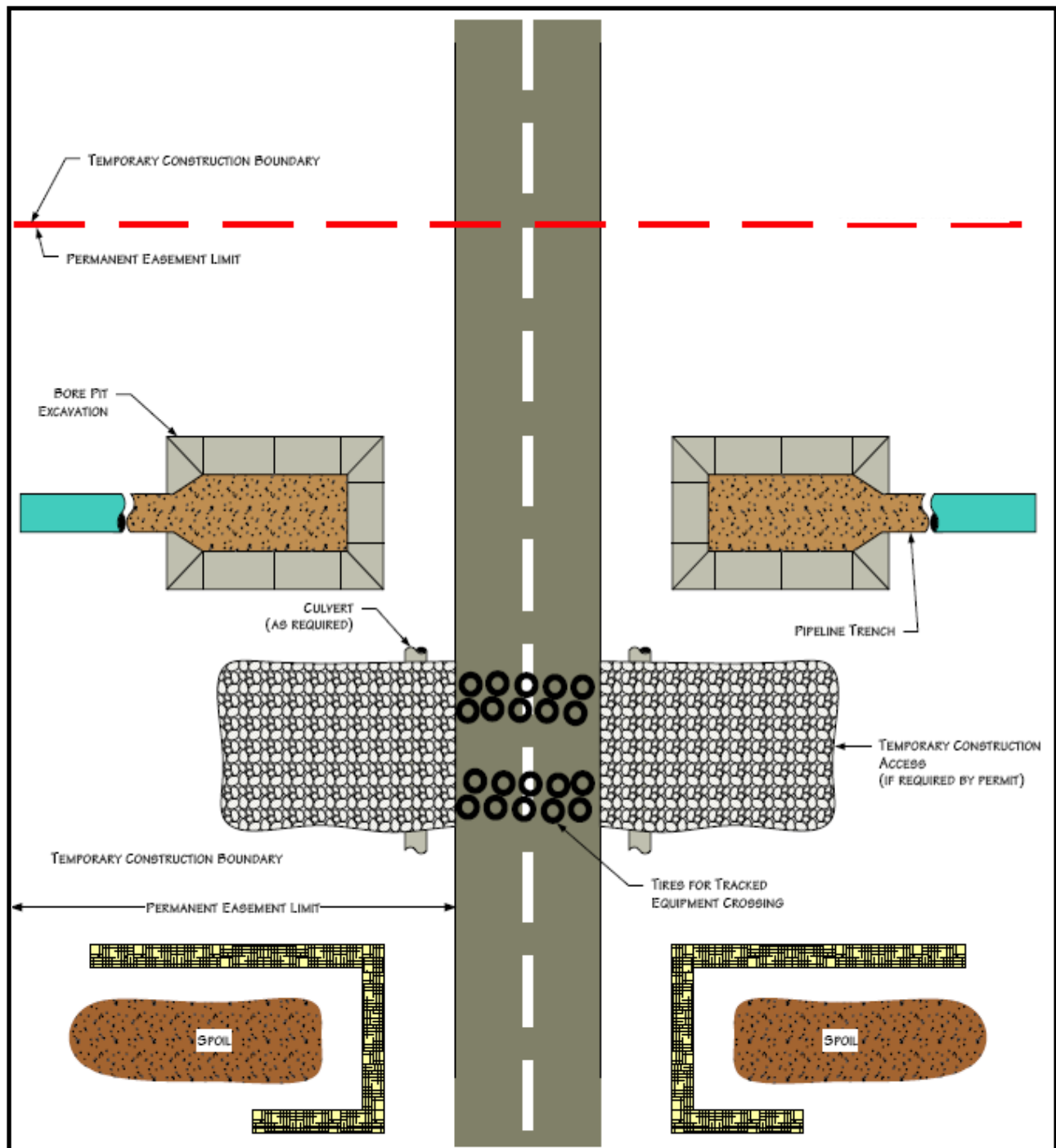
Figure 6.2.8 Typical Straw-Bale Dewatering Structure

New Town Extension Crude Oil Pipeline
Mountrail County



Hiland Crude, LLC
 302 N Independence St. STE 100
 Enid, Oklahoma 73701
 508-242-6040

Figure 6.3.1 – Typical Wetland Crossing Method
 New Town Extension Crude Oil Pipeline
 Mountrail County



PLAN VIEW

NOTES

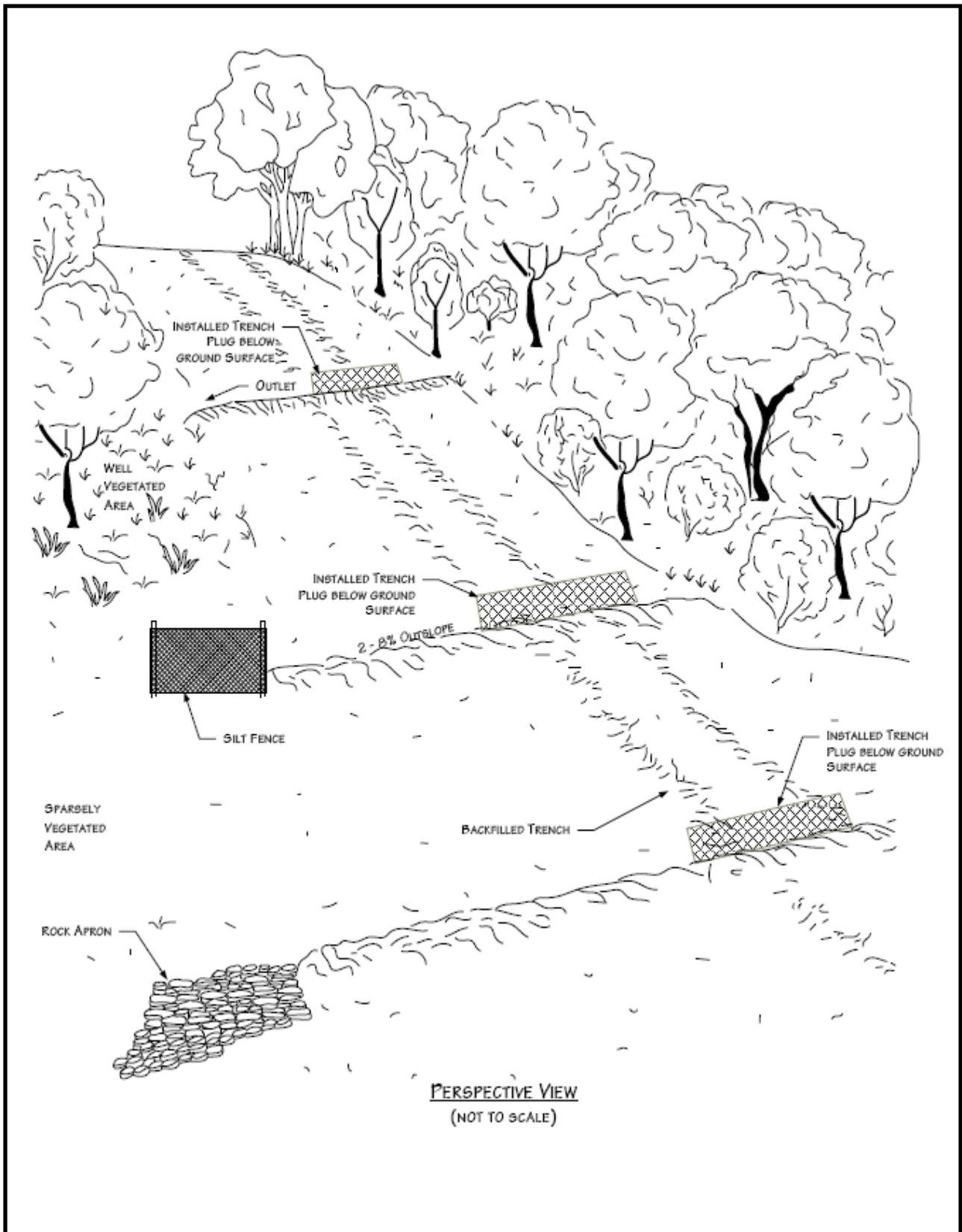
1. PROCEDURES SHOWN IN THIS DRAWING APPLY TO IMPROVED ROADS.
2. ROADS MUST BE CLEANED AFTER EQUIPMENT CROSSES AND DIRT PLACED IN SPOIL CONTAINMENT AREAS.
3. TEMPORARY ACCESS MATERIALS MUST BE REMOVED UPON PROJECT COMPLETION.
4. ADDITIONAL INFORMATION INCLUDED ON OTHER DRAWINGS OR PERMITS.
5. CONSTRUCTION AREAS LOCATED OUTSIDE ROAD ROW.



Hiland Crude, LLC
 302 N Independence St.
 STE 100
 Enid, Oklahoma 73701
 508-242-6040

Figure 6.4.1 Typical Improved Road Crossing-Directional Bore Method

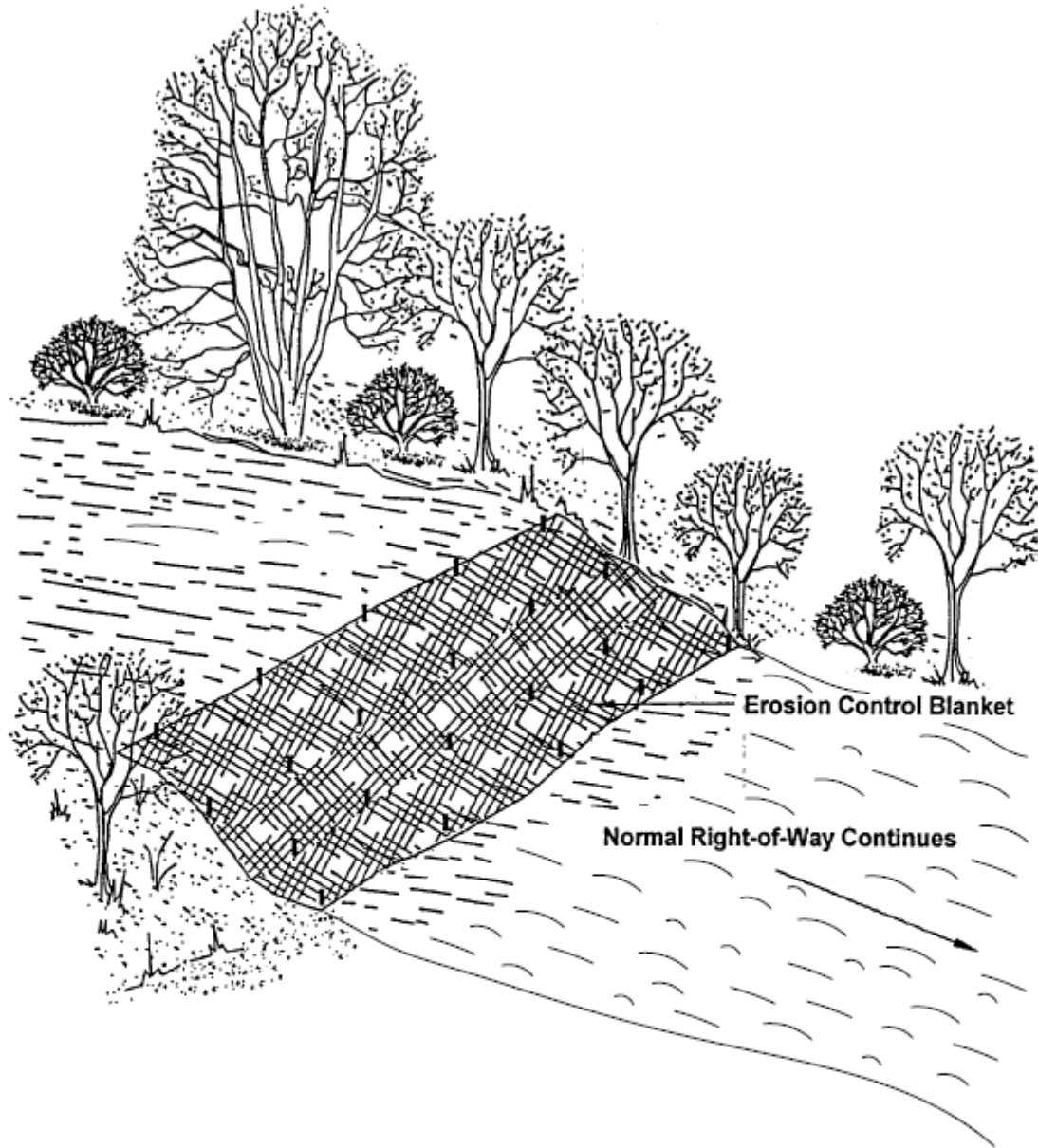
New Town Extension Crude Oil Pipeline
 Mountrail County



Hiland Crude, LLC
 302 N Independence St.
 STE 100
 Enid, Oklahoma 73701
 508-242-6040

**Figure 6.7.1 – Permanent Slope Breakers
 Perspective View**

New Town Extension Crude Oil Pipeline
 Mountrail County



NOTES

1. INSTALL EROSION CONTROL BLANKET AS PER MANUFACTURER'S SPECIFICATIONS.
2. ADDITIONAL INFORMATION INCLUDED ON OTHER DRAWINGS.

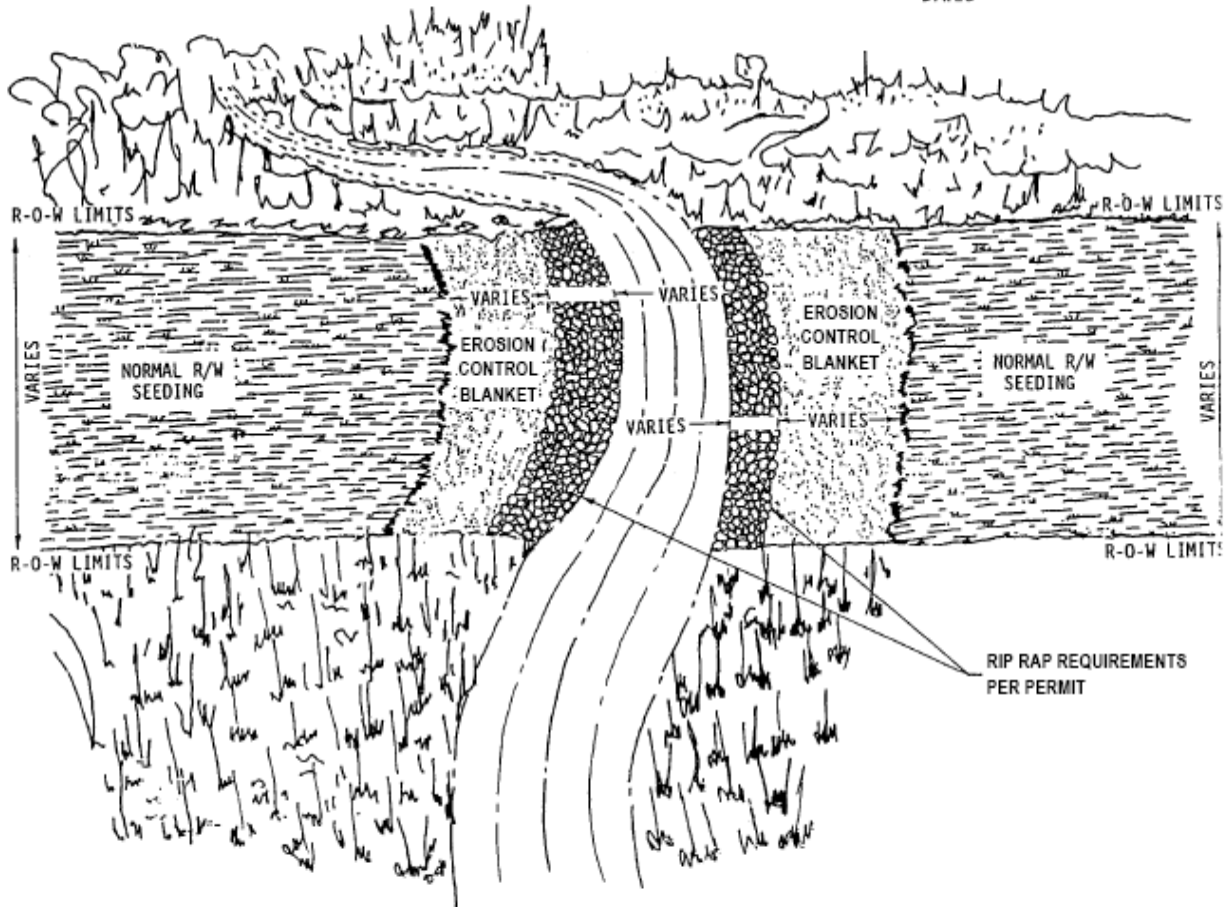


Hiland Crude, LLC
302 N Independence St.
STE 100
Enid, Oklahoma 73701
508-242-6040

**Figure 6.7.2 – Erosion Control Blanket
Steep Slopes (>30%)**

New Town Extension Crude Oil Pipeline
Mountrail County

NOTE: PLACE JUTE BLANKET A MINIMUM OF ONE (1) FOOT UNDER RIP RAP. EXTEND JUTE BLANKET FROM MEAN HIGH WATER LEVEL TO SEVERAL FEET BEHIND HIGH BANK.



Hiland Crude, LLC
 302 N Independence St.
 STE 100
 Enid, Oklahoma 73701
 508-242-6040

Figure 6.7.3 –Typical Final Stream Bank Stabilization-Rip Rap & Erosion Control

New Town Extension Crude Oil Pipeline
 Mountrail County