

November 16, 2016

Jerry Lein
North Dakota Public Service Commission
600 East Boulevard Avenue, Dept. 408
Bismarck, ND 58505-0480

Dear Mr. Lein:

Carlson McCain, Inc. (CMI) conducted a construction inspection at the Lindahl Wind Farm Project – Williams County (Case No. PU-15-482) on November 11, 2016, on behalf of the North Dakota Public Service Commission (PSC). The project consists of installing 78 wind turbines, along with their supporting access roads, and transmission lines.

CMI Inspector Chad Tucker met with Chuck Weaver, Civil Supervisor for Enel Green Power North America, Inc. (Enel), at the lay down yard to review construction progress of the project. Construction progress, outlined in weekly reports submitted since project construction commenced the week of May 7, 2016 were reviewed and discussed.

In the latest monthly construction progress report (October), Mr. Daniele Sutera, Site Coordinator, reported that civil roadwork and turbine foundations were complete. Substation wiring, concrete and steel work was complete. Transmission line foundations and pole work was complete.

Mr. Weaver and Mr. Tucker proceeded to the right-of-way (ROW) to view construction practices and progress of the project. Inspection notes and photos taken along the ROW are attached to this letter.

Field Review

Weather conditions at the time of the field visit were overcast/rain, 45 degrees, with 10-15 mph north winds. As noted in the weekly progress reports, access road dirt work was complete. Topsoil was redistributed on road shoulders with rock removal and soil disking in progress. Rock surfacing of the roads is near complete.

All wind turbines were started and in were in various stages of erection. Turbine location F5 has been relocated to alternate location, G5, due to the discovery of an unmarked oil wellhead. Reclamation had begun on completed turbine pads. Collector lines and construction crane roads were installed using 40' wide corridors. Electrical junction boxes and tie-in lines were being installed and in various stages of completion.

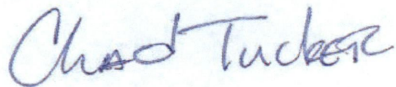
Trees and shrubs had been removed from designated areas and were stored in piles off the work area, waiting for landowner requests on their disposal. Silt fence, straw wattles, riprap and high-water crossings were installed in appropriate areas and were in functional condition.

Construction Inspection
PSC Case No. PU-15-482

The substation construction was underway and expecting the first energization is scheduled for November 23. Overhead transmission line poles were installed and electrical line stringing was in progress.

Please contact me at 701-595-7007 if you have any questions or comments.

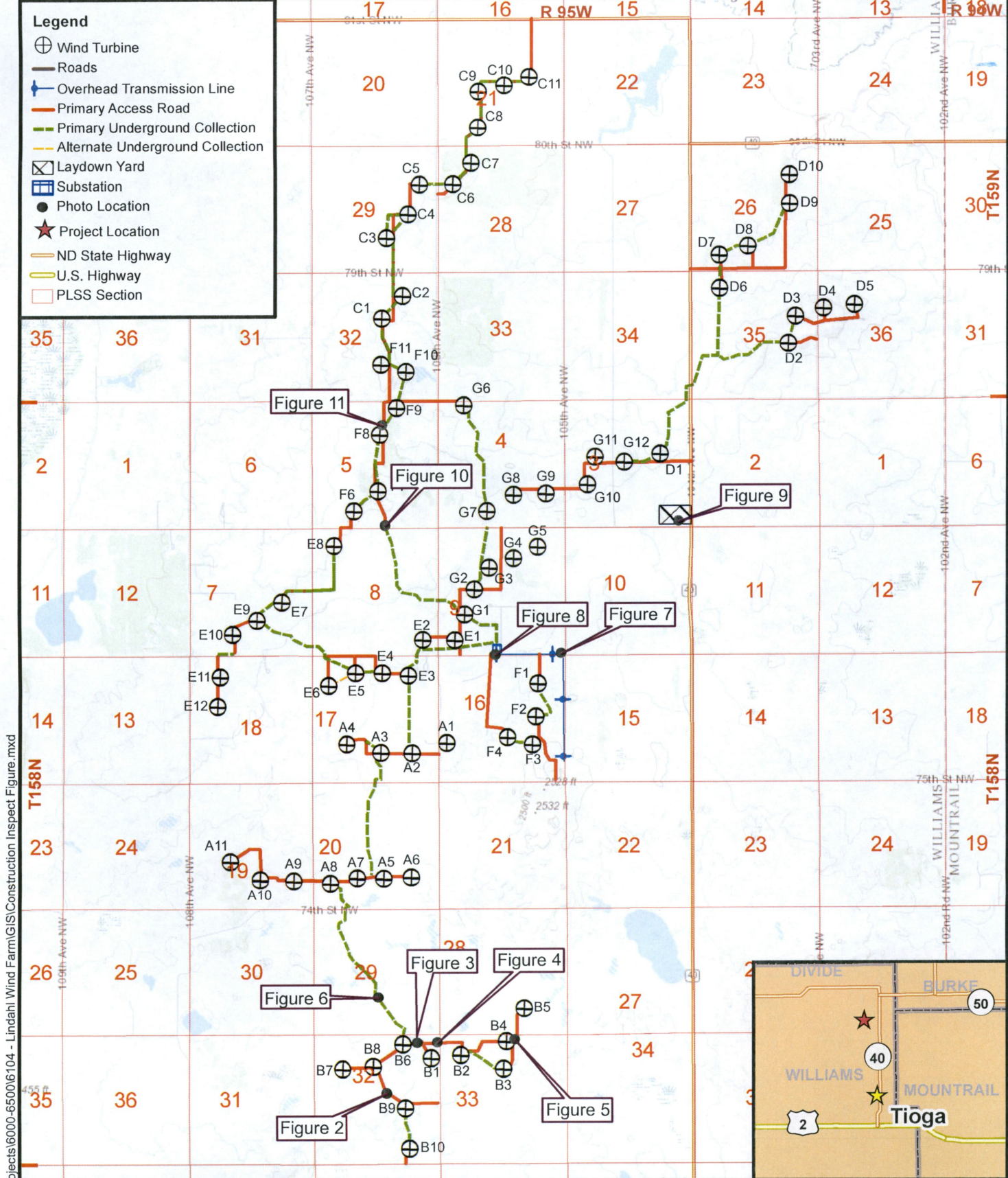
Respectfully submitted,

A handwritten signature in blue ink that reads "Chad Tucker". The signature is written in a cursive, slightly slanted style.

Chad Tucker
Wildlife Biologist

cc: Mr. Chuck Weaver – Civil Supervisor, Enel Green Power North America, Inc.
Mr. Daniele Sutera – Site Coordinator, Enel Green Power North America, Inc.

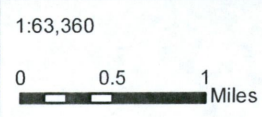
Attachments: notes and correspondence



Legend

- ⊕ Wind Turbine
- Roads
- Overhead Transmission Line
- Primary Access Road
- Primary Underground Collection
- Alternate Underground Collection
- ⊠ Laydown Yard
- ⊞ Substation
- Photo Location
- ★ Project Location
- ND State Highway
- U.S. Highway
- PLSS Section

R:\projects\6000-6500\6104 - Lindahl Wind Farm\GIS\Construction_Inspect Figure.mxd



Basemap: ArcGIS/Basemap/World Topographic Map

**Carlson
McCain**

ENVIRONMENTAL • ENGINEERING • LAND SURVEYING
600 South 2nd Street, Suite 105, Bismarck, North Dakota 58504
www.carlsonmccain.com

Figure 1
Construction Inspection
 Lindahl Wind Project
 ND Public Service Commission



Figure 2. Photo taken facing northwest towards turbine B8. The access road has been surfaced at a width of 16-feet and topsoil redistributed on the shoulders.



Figure 3. Photo taken east of turbine B6 documenting rock placed around culvert for erosion control.



Figure 4. Photo taken facing east on access road to turbine B2 showing silt fence installed and in functional condition.



Figure 5. Photo of ongoing pad reclamation on turbine B4. Topsoil has been redistributed. Tree piles are awaiting disposal at landowner's requests.



Figure 6. Photo taken facing north along the primary underground collection line / crane road that connects the B series of turbines to the A series of turbines.

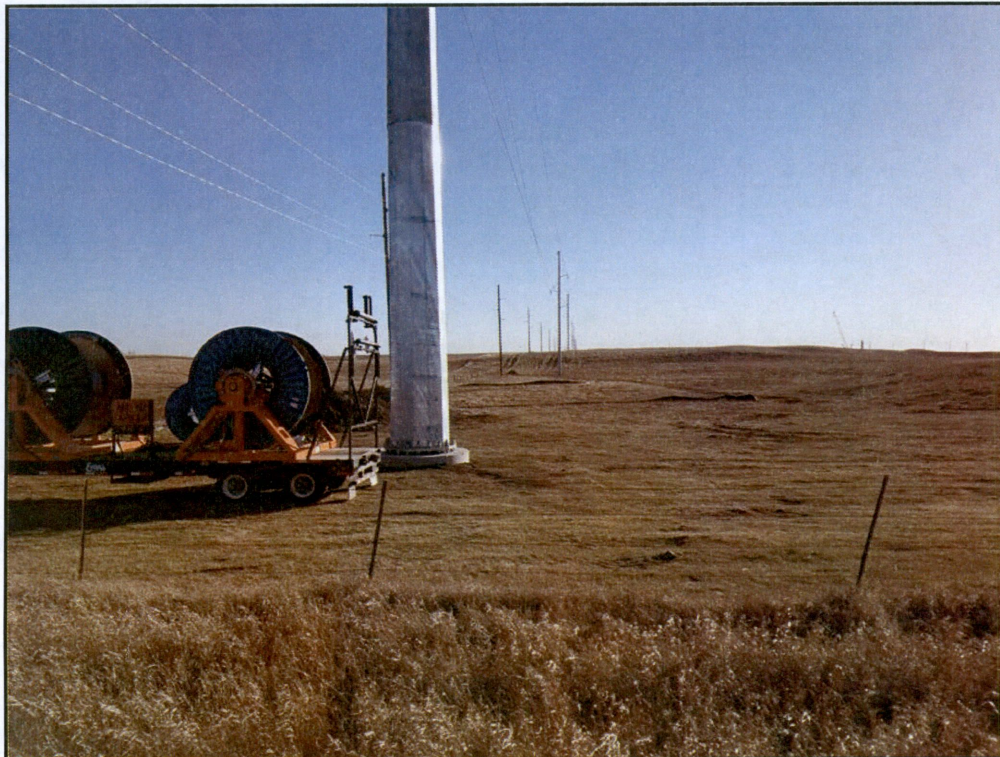


Figure 7. Photo taken looking south down the overhead transmission line which is nearing the completion of the line stringing.



Figure 8. Photo of the Lindahl Substation. The first energization is scheduled for November 23rd.



Figure 9. Photo of the completed Laydown Yard.



Figure 10. Photo taken facing north along the access road to turbine F7. Electrical cable and junction box installation is underway.



Figure 11. Photo taken along access road, north of turbine F8. Additional rock placed in road for a high-water crossing and straw waddles in place for erosion control.

Project Lindahl Wind Farm - Construction Inspection

Project No. PU-15-482

Signature Chad Tucker

Date Nov - 11, 2016

- * Met with Chuck WEAVER (Civil Super - ENERGENCY) at app. 2:00 pm.
- * Conditions ARE SUNNY, 45°F, 10-15 mph N-winds.
- * Turbine construction is in progress on all units and are in various stages of completion.
- * Access roads ARE NEAR completion with only a few AREAS awaiting rock surfacing.
- * Majority of access roads ARE in the reclamation phase with topsoil redistributed and roads finished to a final width of 16-feet.
- * Erosion control devices ARE in place and in working order. Erap, silt fence, straw waddles and high-water crossings.
- * TREES and shrubs ^(76/87) have BEEN removed in designated locations. They will be disposed of per landowner requests.
- * Overhead transmission line - poles were installed and wire stringing process is underway.
- * Substation structure is complete and in the process of installing electrical equipment. First energization test is scheduled for 11/23.
- * Turbine FS has been deleted and moved to the Alternate GS location. An unmarked abandoned oil well was discovered at the FS site.
- * Installation of underground connecting lines and crane road was near completed. with lines to be pulled and electrical boxes installed.