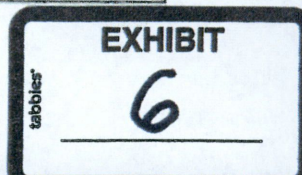


**Alexander Tank Farm Crude Oil Pipeline Agency Contacts**

Agencies Contacted	Form of Contact	Date of Contact	Date of Reply
US Army Corps of Engineers	Mailed Letter	6/23/2014	6/25/2014
ND Parks and Recreation	Mailed Letter	6/23/2014	7/14/2014
ND Game and Fish Department	Mailed Letter	6/23/2014	7/14/2014
Lake Ilo National Wildlife Refuge	Mailed Letter	6/23/2014	
U.S. Fish and Wildlife Service	Mailed Letter	6/23/2014	8/11/2014
McKenzie County Planning Department	Mailed Letter	7/8/2014	7/14/2014
U.S. Air Force - eric.diehl@us.af.mil	Email	7/9/2014	
NDIC Pipeline Authority	Mailed Letter	9/30/2014	
ND State Water Commission	Mailed Letter	9/30/2014	10/6/2014
ND Department of Health	Mailed Letter	9/30/2014	10/24/2014
ND DoT District 5	Mailed Letter	9/30/2014	
ND Department of Trust Lands	Mailed Letter	9/30/2014	
ND Aeronautics Commission - ndaero@nd.gov	Email	8/7/2015	
ND Attorney General - ndag@nd.gov	Email	8/7/2015	
ND Department of Agriculture - ndda@nd.gov	Email	8/7/2015	
ND Labor Department - labor@nd.gov	Email	8/7/2015	
ND Department of Career and Tech. Education - cte@nd.gov	Email	8/7/2015	
ND Department of Commerce - commerce@nd.gov	Email	8/7/2015	
ND Energy Development Impact Office - energyimpact@nd.gov	Email	8/7/2015	
Indian Affairs Commission - hhanley@nd.gov	Email	8/7/2015	
ND Soil Conservation Committee - scott.hochhalter@ndsu.edu	Email	8/7/2015	
McKenzie County Commission - lsvihovec@co.mckenzie.nd.us	Email	8/7/2015	8/10/2015 via McKenzie County Planning Department
ND Department of Human Services - dhseo@nd.gov	Email	8/7/2015	
ND Industrial Commission - ndicinfo@nd.gov	Email	8/7/2015	
North Dakota Transmission Authority - ndicinfo@nd.gov	Email	8/7/2015	
ND Office of Governor	Mailed Letter	8/7/2015	
Job Service North Dakota	Mailed Letter	8/7/2015	
U.S. Department of Defense	Mailed Letter	8/7/2015	
Federal Aviation Administration	Mailed Letter	8/7/2015	



June 23, 2014

Dan Cimarosti  
Regulatory Project Manager  
US Army Corps of Engineers  
1513 South 12<sup>th</sup> Street  
Bismarck, North Dakota 58504

**RE: Alexander Station Lateral Crude Oil Pipeline – McKenzie County**

Hiland Crude, LLC (Hiland) constructed a 4.5-mile-long crude oil pipeline in McKenzie County between approximately December 2013 and April 2014.

Due to the continuing demand for additional crude oil pipeline services, Hiland intends to expand the system's capacity. One pumping station is proposed to be added to boost capacity. This station may include a truck terminal, a 50,000 gallon tank, and pump equipment. Additional surface facilities installed will be limited to pipeline markers, rectifiers, "pig" launchers, receivers, and block valves. The North Dakota Public Service Commission Utility permit is required to provide the needed capacity to transport the increased production of crude oil from the Bakken and Three Forks formations.

Keitu Engineers and Consultants, Inc. (Keitu) provides the following description of Hiland's pipeline route.

- The pipeline originates five miles north-northeast of Alexander, North Dakota at a connection with Hiland's Market Center Pipeline system and runs 4.5 miles to the north, terminating at Hiland's Alexander Station, approximately 9.4 miles north of Alexander, North Dakota.
- The pipeline runs through the following legal descriptions:
  - T151N R101W Sections 6 and 7
  - T152N R101W Sections 30 and 31
  - T152W R102W Sections 24, 25, and 36

Keitu is contracted by Hiland to conduct the biological assessment of the 4.5-mile project corridor (1 mile wide) to be completed in June of 2014.

Enclosed is a map of the entire length of the pipeline route intended for the US Army Corps of Engineers to review. The North Dakota Public Service Commission, requires applicants to contact agencies for comment. We respectfully request that any specific species of concern known in the area is brought to our attention to ensure we focus on those items.

As always, Keitu appreciates the opportunity to assist our client and the regulatory agencies with compliance. I will serve as the primary Keitu contact and can be reached at (701) 667-1800 or via email at [kbecker@keitu.com](mailto:kbecker@keitu.com).

Karine Becker  
Staff Specialist

*Enclosure: Pipeline Route*



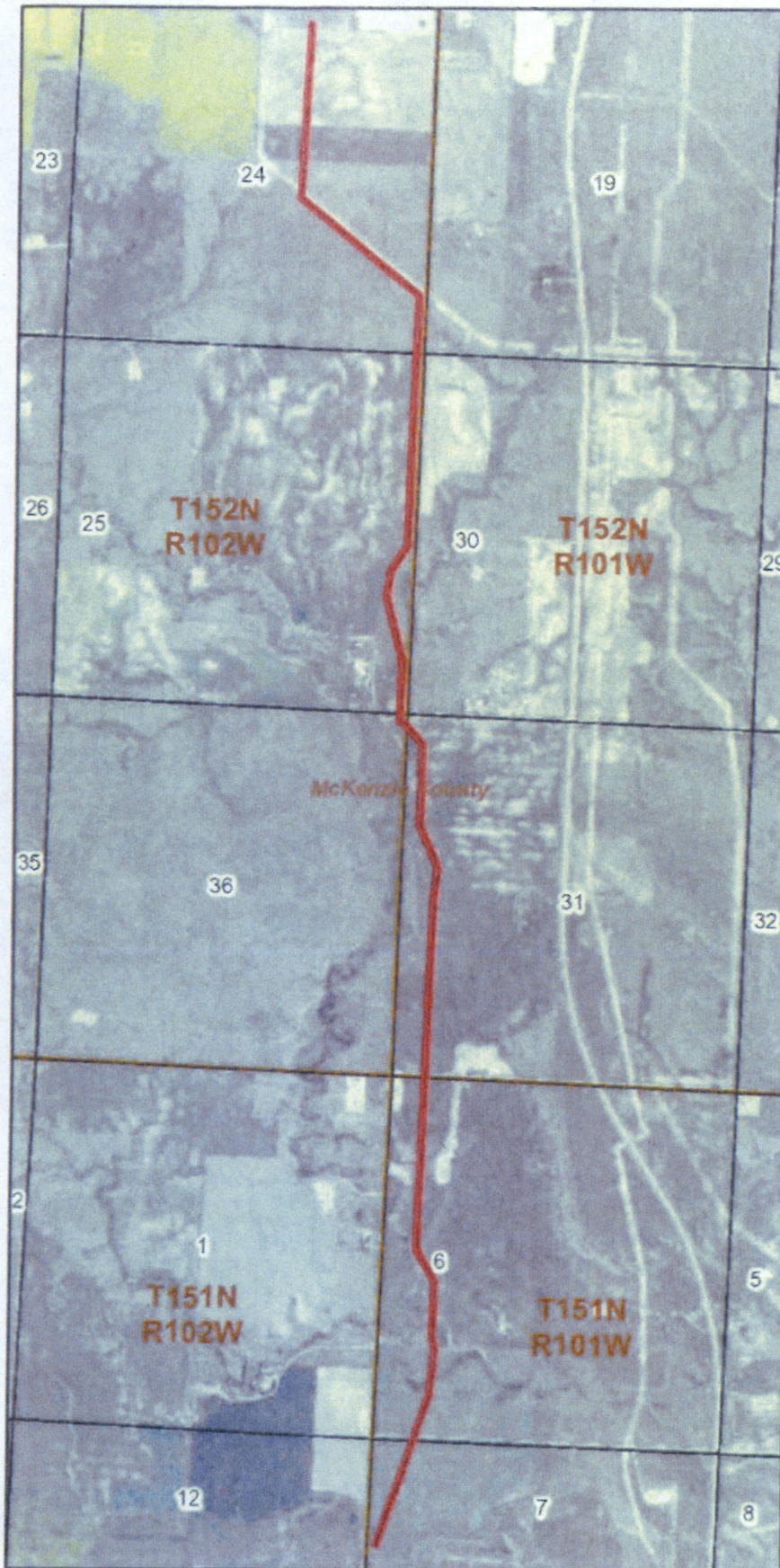
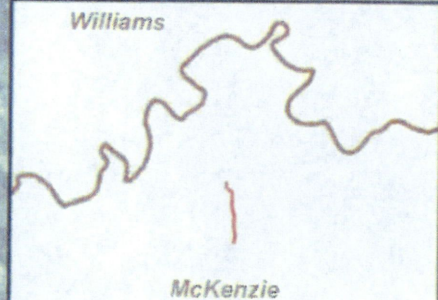
### Alexander Station Lateral Crude Oil Pipeline

#### Legend

- Project Centerline
- PLSS Sections
- PLSS Townships



0 0.1250.25 0.5 Miles



June 23, 2014

Mark Zimmerman  
North Dakota Parks and Recreation  
1600 E. Century Avenue, Suite 3  
Bismarck, ND 58503-0649

**RE: Alexander Station Lateral Crude Oil Pipeline – McKenzie County**

Hiland Crude, LLC (Hiland) constructed a 4.5-mile-long crude oil pipeline in McKenzie County between approximately December 2013 and April 2014.

Due to the continuing demand for additional crude oil pipeline services, Hiland intends to expand the system's capacity. One pumping station is proposed to be added to boost capacity. This station may include a truck terminal, a 50,000 gallon tank, and pump equipment. Additional surface facilities installed will be limited to pipeline markers, rectifiers, "pig" launchers, receivers, and block valves. The North Dakota Public Service Commission Utility permit is required to provide the needed capacity to transport the increased production of crude oil from the Bakken and Three Forks formations.

Keitu Engineers & Consultants, Inc. (Keitu) provides the following description of Hiland's pipeline route.

- The pipeline originates five miles north-northeast of Alexander, North Dakota at a connection with Hiland's Market Center Pipeline system and runs 4.5 miles to the north, terminating at Hiland's Alexander Station, approximately 9.4 miles north of Alexander, North Dakota.
- The pipeline runs through the following legal descriptions:
  - T151N R101W Sections 6 and 7
  - T152N R101W Sections 30 and 31
  - T152W R102W Sections 24, 25, and 36

Keitu is contracted by Hiland Crude, LLC to conduct the biological assessment of the 4.5-mile project corridor (1 mile wide) to be completed in June of 2014.

Enclosed is a map of the entire length of the pipeline route intended for the North Dakota Parks and Recreation to review. The North Dakota Public Service Commission, requires applicants to contact agencies for comment. We respectfully request that any specific species of concern known in the area is brought to our attention to ensure we focus on those items.

As always, Keitu appreciates the opportunity to assist our client and the regulatory agencies with compliance. I will serve as the primary Keitu contact and can be reached at (701) 667-1800 or via email at [kbecker@keitu.com](mailto:kbecker@keitu.com)




**Karine Becker**  
Staff Specialist

*Enclosure: Pipeline Route*




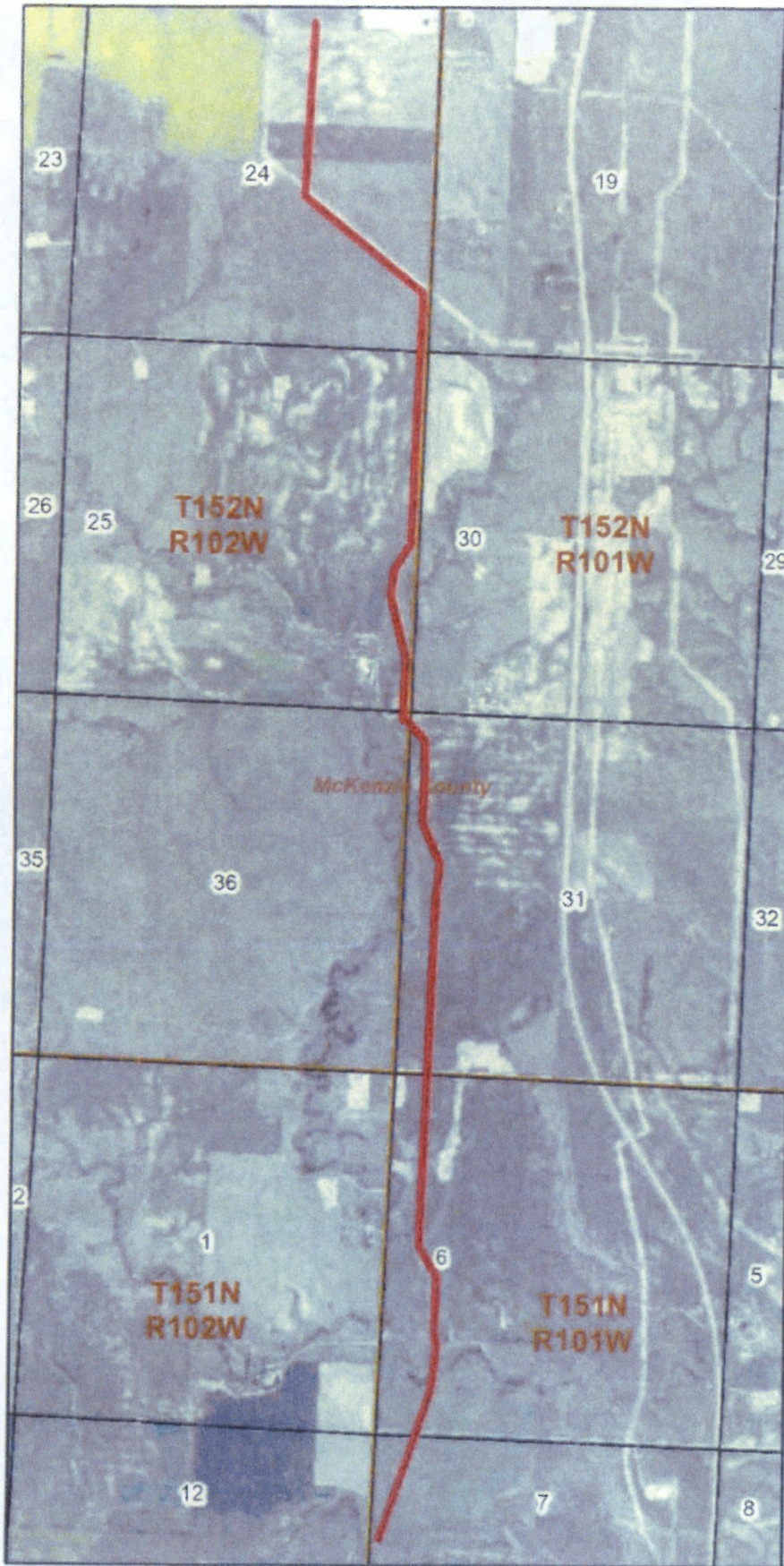
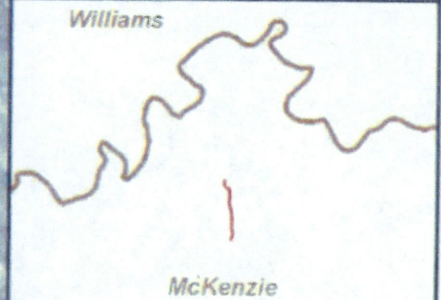
### Alexander Station Lateral Crude Oil Pipeline

#### Legend

-  Project Centerline
-  PLSS Sections
-  PLSS Townships



0 0.1250.25 0.5 Miles  




June 23, 2014

Steve Dyke  
Conservation Supervisor  
North Dakota Game and Fish Department  
100 N. Bismarck Expressway  
Bismarck, ND 58501-5095

**RE: Alexander Station Lateral Crude Oil Pipeline – McKenzie County**

Hiland Crude, LLC (Hiland) constructed a 4.5-mile-long crude oil pipeline in McKenzie County between approximately December 2013 and April 2014.

Due to the continuing demand for additional crude oil pipeline services, Hiland intends to expand the system's capacity. One pumping station is proposed to be added to boost capacity. This station may include a truck terminal, a 50,000 gallon tank, and pump equipment. Additional surface facilities installed will be limited to pipeline markers, rectifiers, "pig" launchers, receivers, and block valves. The North Dakota Public Service Commission Utility permit is required to provide the needed capacity to transport the increased production of crude oil from the Bakken and Three Forks formations.

Keitu Engineers & Consultants, Inc. (Keitu) provides the following description of Hiland's pipeline route.

- The pipeline originates five miles north-northeast of Alexander, North Dakota at a connection with Hiland's Market Center Pipeline system and runs 4.5 miles to the north, terminating at Hiland's Alexander Station, approximately 9.4 miles north of Alexander, North Dakota.
- The pipeline runs through the following legal descriptions:
  - T151N R101W Sections 6 and 7
  - T152N R101W Sections 30 and 31
  - T152W R102W Sections 24, 25, and 36

Keitu is contracted by Hiland Crude, LLC to conduct the biological assessment of the 4.5-mile project corridor (1 mile wide) to be completed in June of 2014.

Enclosed is a map of the entire length of the pipeline route intended for the North Dakota Game and Fish Department to review. The North Dakota Public Service Commission, requires applicants to contact agencies for comment. We respectfully request that any specific species of concern known in the area is brought to our attention to ensure we focus on those items.

As always, Keitu appreciates the opportunity to assist our client and the regulatory agencies with compliance. I will serve as the primary Keitu contact and can be reached at (701) 667-1800 or via email at [kbecker@keitu.com](mailto:kbecker@keitu.com).

Karine Becker  
Staff Specialist

*Enclosure: Pipeline Route*



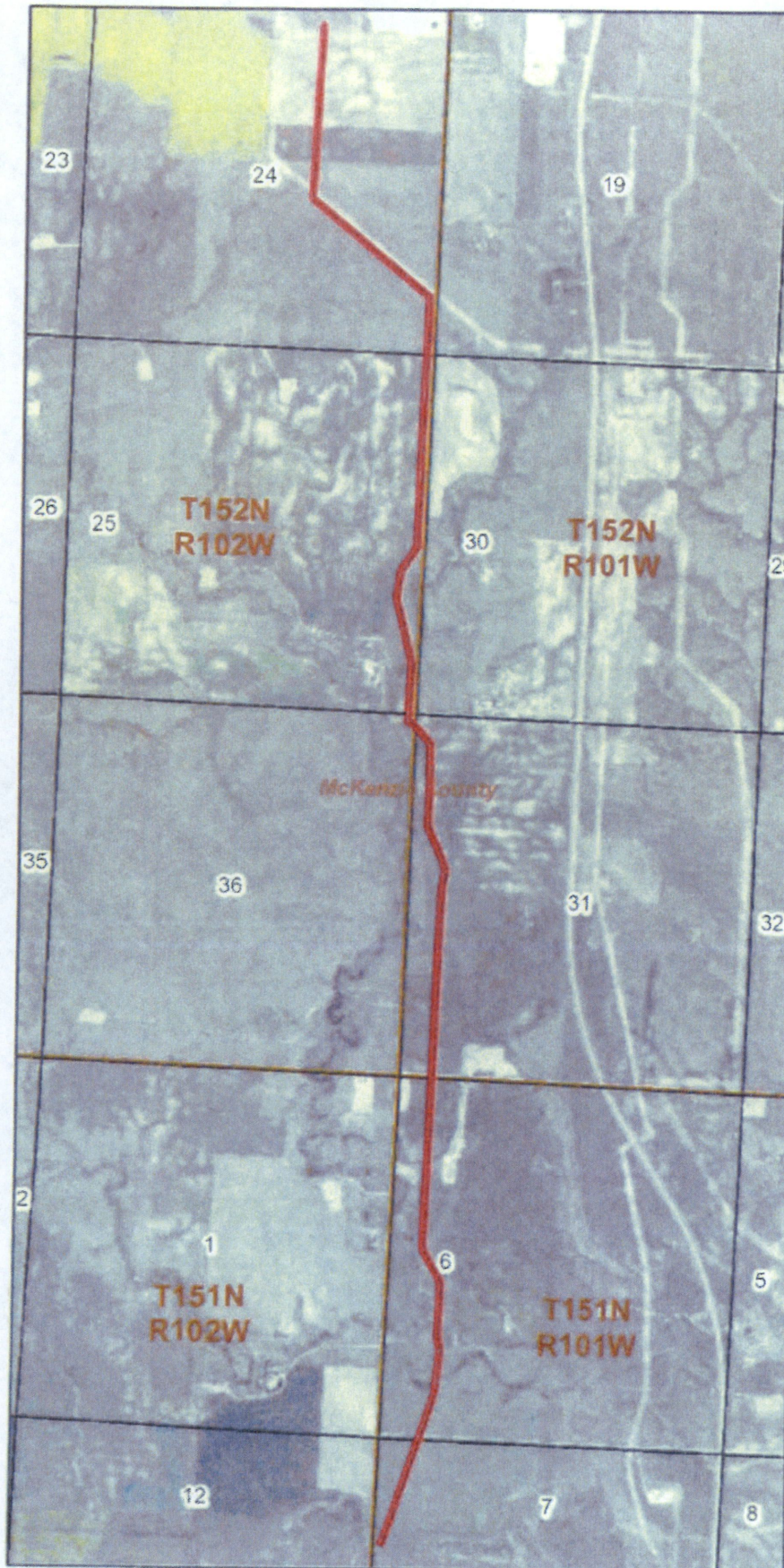
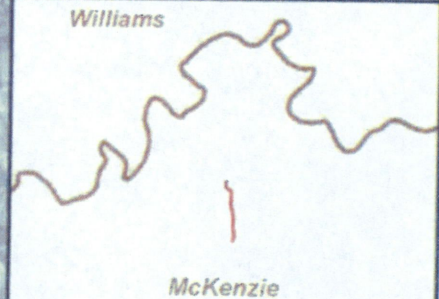
### Alexander Station Lateral Crude Oil Pipeline

#### Legend

- Project Centerline
- PLSS Sections
- PLSS Townships



0 0.125 0.25 0.5 Miles



June 23, 2014

Todd Gallion  
Wildlife Refuge Specialist  
Lake Ilo National Wildlife Refuge  
489 102 Avenue S.W.  
Dunn Center, ND 58626

**RE: Alexander Station Lateral Crude Oil Pipeline - McKenzie County**

Hiland Crude, LLC (Hiland) constructed a 4.5-mile-long crude oil pipeline in McKenzie County between approximately December 2013 and April 2014.

Due to the continuing demand for additional crude oil pipeline services, Hiland intends to expand the system's capacity. One pumping station is proposed to be added to boost capacity. This station may include a truck terminal, a 50,000 gallon tank, and pump equipment. Additional surface facilities installed will be limited to pipeline markers, rectifiers, "pig" launchers, receivers, and block valves. The North Dakota Public Service Commission Utility permit is required to provide the needed capacity to transport the increased production of crude oil from the Bakken and Three Forks formations.

Keitu Engineers & Consultants, Inc. (Keitu) provides the following description of Hiland's pipeline route.

- The pipeline originates five miles north-northeast of Alexander, North Dakota at a connection with Hiland's Market Center Pipeline system and runs 4.5 miles to the north, terminating at Hiland's Alexander Station, approximately 9.4 miles north of Alexander, North Dakota.
- The pipeline runs through the following legal descriptions:
  - T151N R101W Sections 6 and 7
  - T152N R101W Sections 30 and 31
  - T152W R102W Sections 24, 25, and 36

Keitu is contracted by Hiland to conduct the biological assessment of the 4.5-mile project corridor (1 mile wide) to be completed in June of 2014.

Enclosed is a map of the entire length of the pipeline route intended for Lake Ilo National Wildlife Refuge to review. The North Dakota Public Service Commission, requires applicants to contact agencies for comment. We respectfully request that any specific species of concern known in the area is brought to our attention to ensure we focus on those items.

As always, Keitu appreciates the opportunity to assist our client and the regulatory agencies with compliance. I will serve as the primary Keitu contact and can be reached at (701) 667-1800 or via email at [kbecker@keitu.com](mailto:kbecker@keitu.com).

Karine Becker  
Staff Specialist

*Enclosure Pipeline Route*



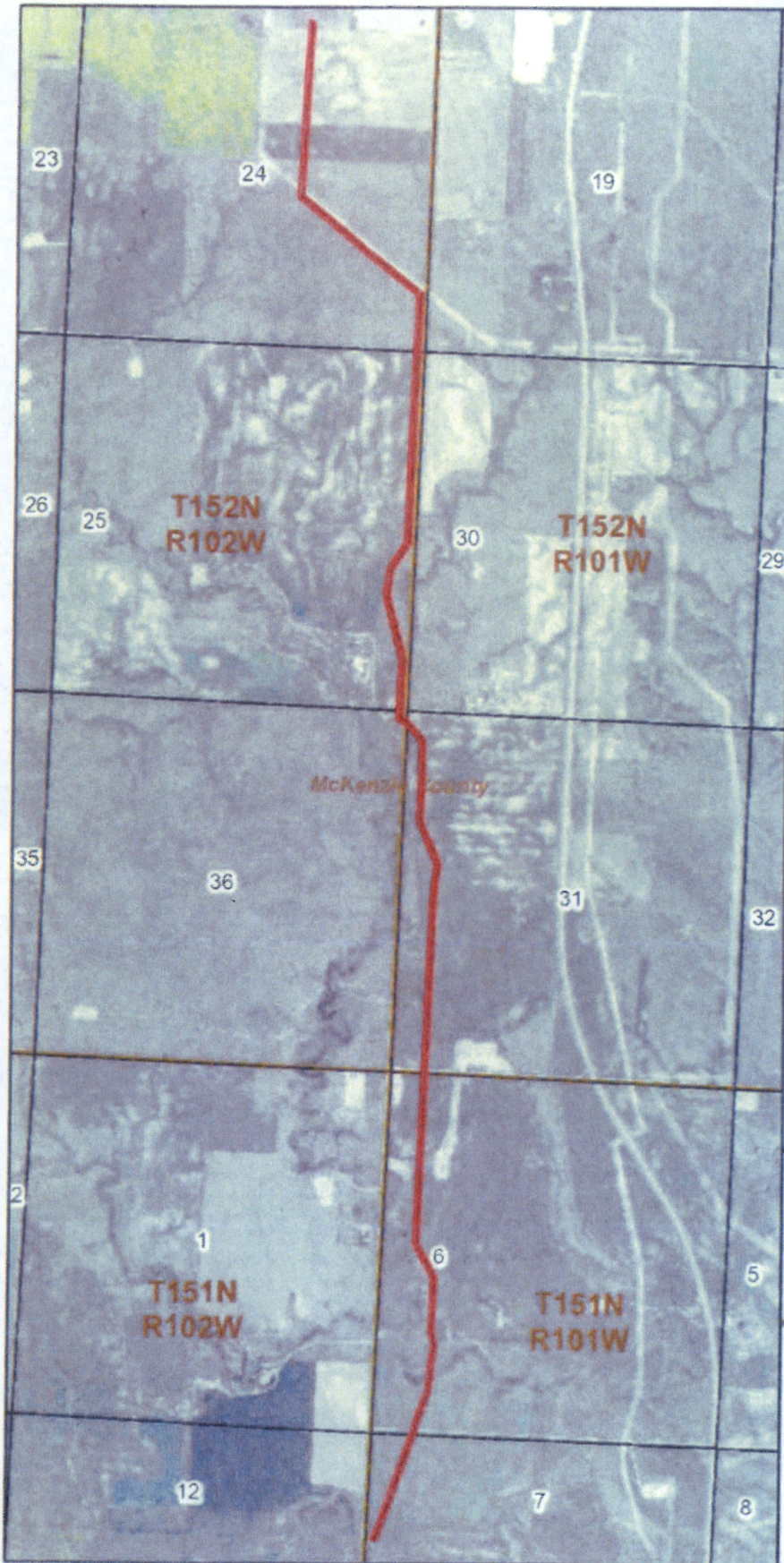
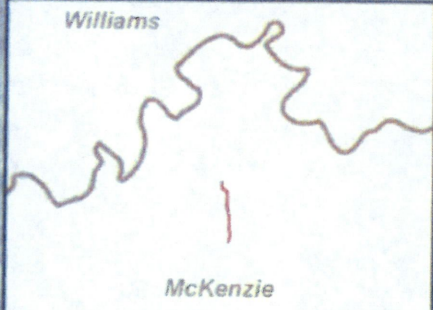
### Alexander Station Lateral Crude Oil Pipeline

#### Legend

- Project Centerline
- PLSS Sections
- PLSS Townships



0 0.1250.25 0.5 Miles



June 23, 2014

Scott Larson  
Field Supervisor  
North Dakota Field Office  
U.S. Fish and Wildlife Service  
3425 Miriam Avenue  
Bismarck, North Dakota 58501-7926

**RE: Alexander Station Lateral Crude Oil Pipeline – McKenzie County**

Hiland Crude, LLC (Hiland) constructed a 4.5-mile-long crude oil pipeline in McKenzie County between approximately December 2013 and April 2014.

Due to the continuing demand for additional crude oil pipeline services, Hiland intends to expand the system's capacity. One pumping station is proposed to be added to boost capacity. This station may include a truck terminal, a 50,000 gallon tank, and pump equipment. Additional surface facilities installed will be limited to pipeline markers, rectifiers, "pig" launchers, receivers, and block valves. The North Dakota Public Service Commission Utility permit is required to provide the needed capacity to transport the increased production of crude oil from the Bakken and Three Forks formations.

Keitu Engineers & Consultants Inc. (Keitu) provides the following description of Hiland's pipeline route.

- The pipeline originates five miles north-northeast of Alexander, North Dakota at a connection with Hiland's Market Center Pipeline system and runs 4.5 miles to the north, terminating at Hiland's Alexander Station, approximately 9.4 miles north of Alexander, North Dakota.
- The pipeline runs through the following legal descriptions:
  - T151N R101W Sections 6 and 7
  - T152N R101W Sections 30 and 31
  - T152W R102W Sections 24, 25, and 36

Keitu is contracted by Hiland Crude, LLC to conduct the biological assessment of the 4.5-mile project corridor (1 mile wide) to be completed in June of 2014.

Enclosed is a map of the entire length of the pipeline route intended for the U.S. Fish and Wildlife Service to review. The North Dakota Public Service Commission, requires applicants to contact agencies for comment. We respectfully request that any specific species of concern known in the area is brought to our attention to ensure we focus on those items.

As always, Keitu appreciates the opportunity to assist our client and the regulatory agencies with compliance. I will serve as the primary Keitu contact and can be reached at (701) 667-1800 or via email at [kbecker@keitu.com](mailto:kbecker@keitu.com).




Karine Becker  
Staff Specialist

*Enclosure: Pipeline Route*



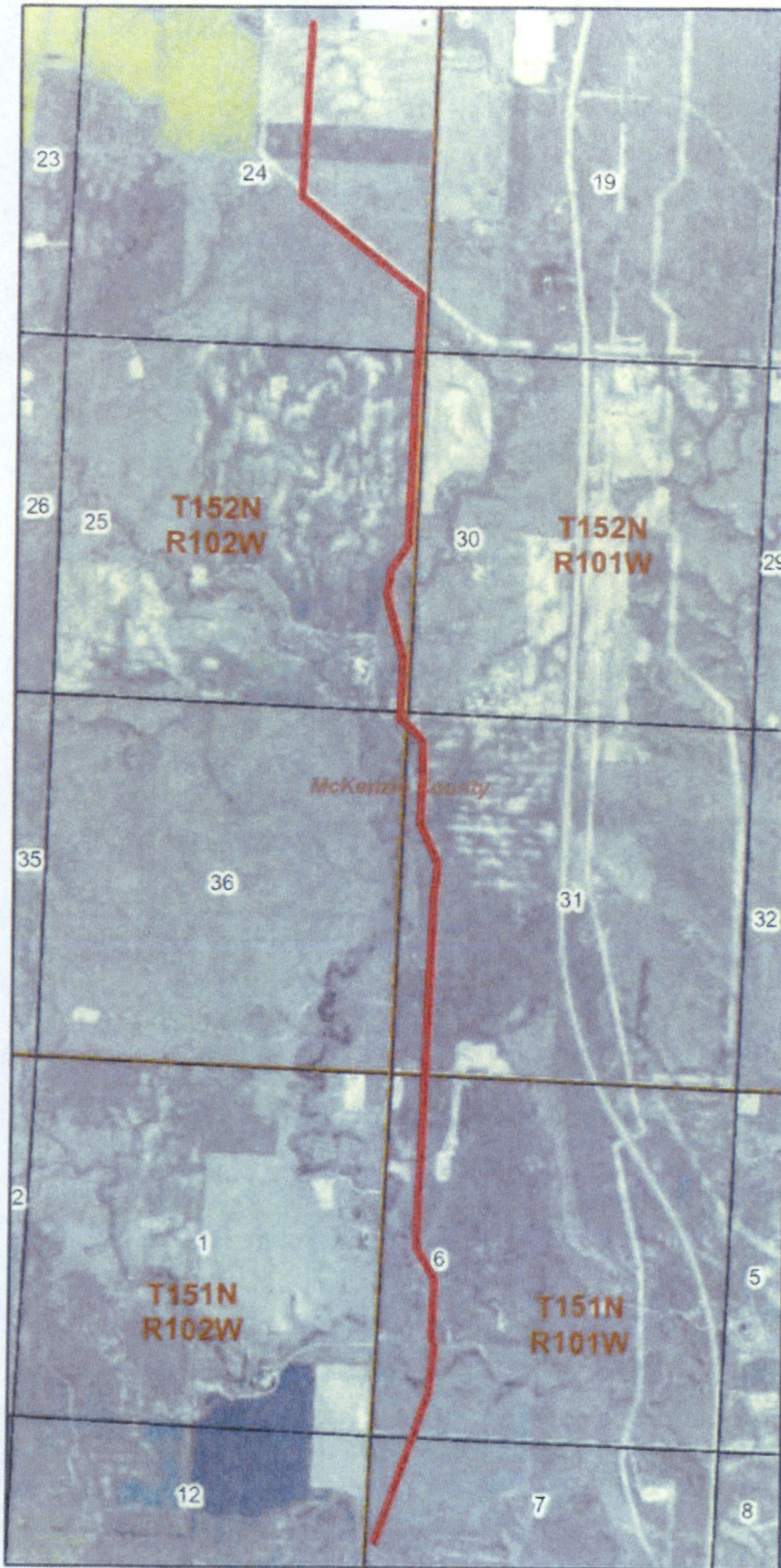
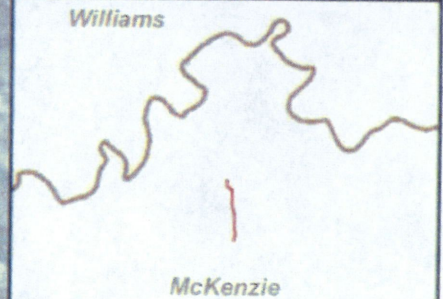

### Alexander Station Lateral Crude Oil Pipeline

#### Legend

-  Project Centerline
-  PLSS Sections
-  PLSS Townships



0 0.1250 25 0.5 Miles



July 8, 2014

Walter Hadley  
County Planning Director  
McKenzie County Planning Department  
201 5<sup>th</sup> Street NW  
Watford City, ND 58854

**RE: Alexander Station Lateral Crude Oil Pipeline – McKenzie County**

Hiland Crude, LLC (Hiland) constructed a 4.5-mile-long crude oil pipeline in McKenzie County between approximately December 2013 and April 2014.

Due to the continuing demand for additional crude oil pipeline services, Hiland intends to expand the system's capacity. One pumping station is proposed to be added to boost capacity. This station may include a truck terminal, a 50,000 gallon tank, and pump equipment. Additional surface facilities installed will be limited to pipeline markers, rectifiers, "pig" launchers, receivers, and block valves. The North Dakota Public Service Commission Utility permit is required to provide the needed capacity to transport the increased production of crude oil from the Bakken and Three Forks formations.

Keitu Engineers and Consultants, Inc. (Keitu) provides the following description of Hiland's pipeline route.

- The pipeline originates five miles north-northeast of Alexander, North Dakota at a connection with Hiland's Market Center Pipeline system and runs 4.5 miles to the north, terminating at Hiland's Alexander Station, approximately 9.4 miles north of Alexander, North Dakota.
- The pipeline runs through the following legal descriptions:
  - T151N R101W Sections 6 and 7
  - T152N R101W Sections 30 and 31
  - T152W R102W Sections 24, 25, and 36

Enclosed is a map of the entire length of the pipeline route intended for the McKenzie County Planning Department to review. The North Dakota Public Service Commission, requires applicants to contact relevant agencies to gain information on planned developments within the vicinity of the Project. We respectfully request that any specific concerns known in the area is brought to our attention to ensure we focus on those items.

As always, Keitu appreciates the opportunity to assist our client and the regulatory agencies with compliance. I will serve as the primary Keitu contact and can be reached at (701) 667-1800 or via email at [kbecker@keitu.com](mailto:kbecker@keitu.com).

Karine Becker  
Staff Specialist

*Enclosure: Pipeline Route*



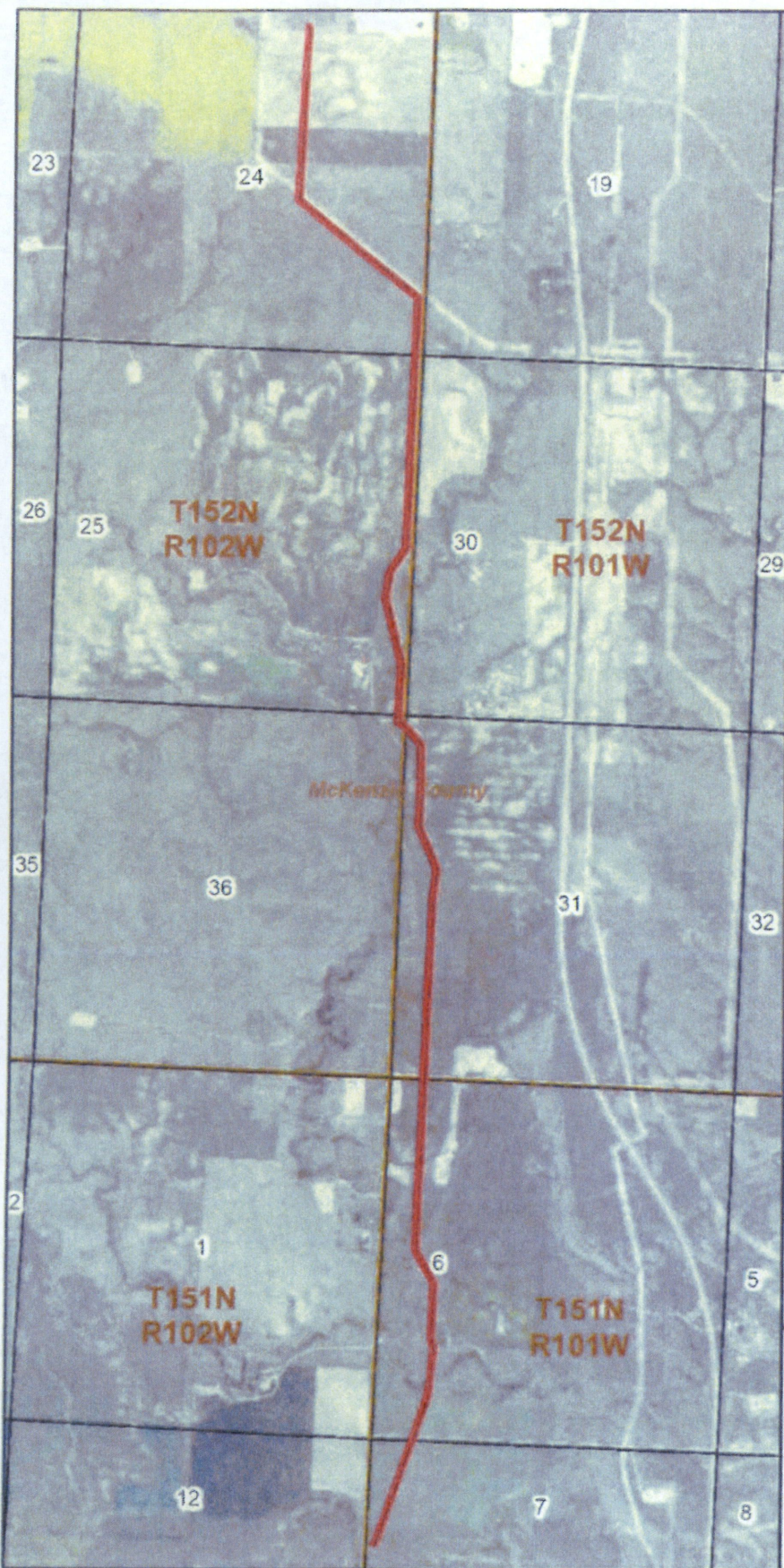
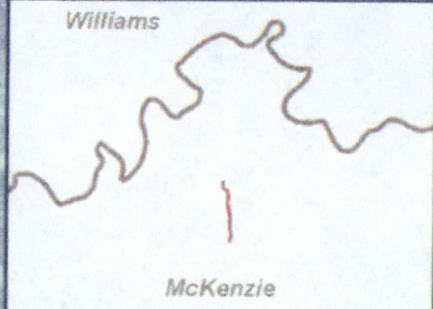
### Alexander Station Lateral Crude Oil Pipeline

#### Legend

- Project Centerline
- PLSS Sections
- PLSS Townships



0 0.1250.25 0.5 Miles



**From:** Karine Becker  
**To:** "eric.diehl@us.af.mil"  
**Subject:** Alexander Station Lateral Pipeline Route Application  
**Date:** Wednesday, July 09, 2014 8:30:43 AM  
**Attachments:** [ATF Letter Map.pdf](#)

---

Good morning,

The ND PSC added a criteria for utility projects to check for siting within certain distance of missile sites or associated facilities.

Hiland Crude, LLC is siting a crude oil pipeline in McKenzie County. I need to verify that the pipeline is not within one thousand two hundred feet of the geographic center of an intercontinental ballistic missile (ICBM) launch or launch control facility and not within thirty feet on either side of a direct line between intercontinental ballistic missile (ICBM) launch or launch control facilities to avoid microwave interference.

I have attached a general location map of the project. I can also send ArcGIS Shapefiles upon request.

We respectfully request that any specific concerns known in the area is brought to our attention to ensure we focus on those items.

Thank you,

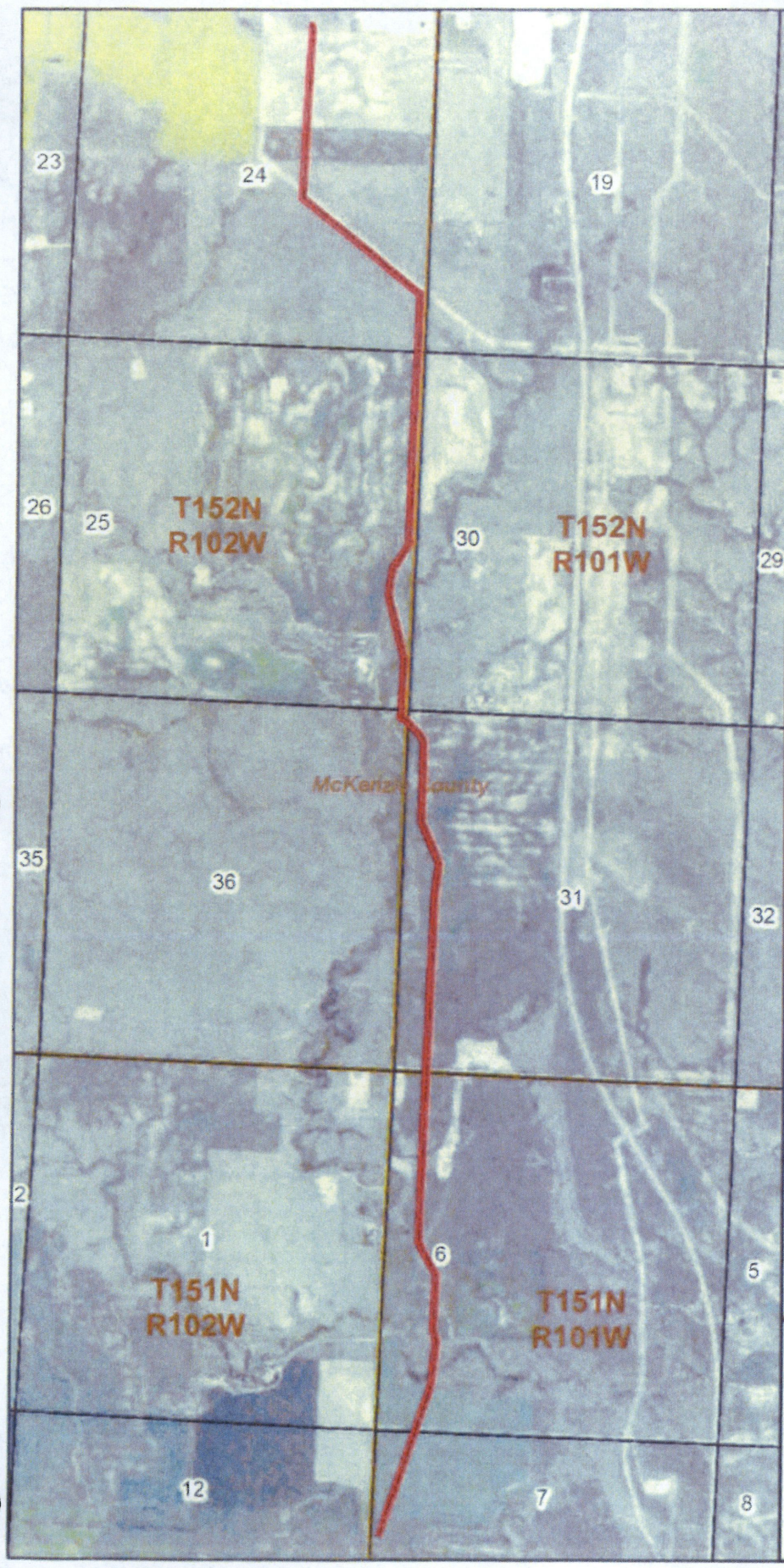
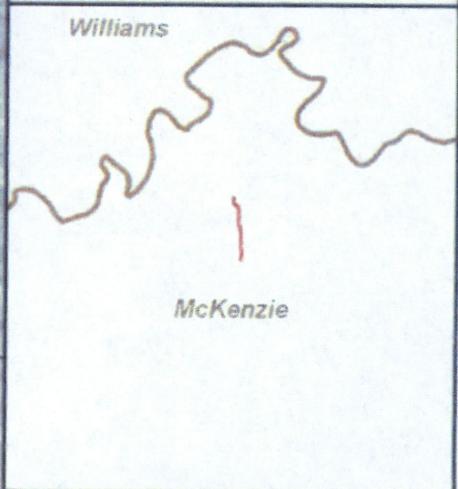
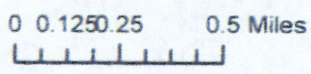
Karine Becker  
Specialist GIS/Biology  
Keitu Engineers & Consultants, Inc.  
1403 27th St NW  
PO Box 98  
Mandan ND 58554  
(701) 667-1800 [www.keitu.com](http://www.keitu.com)



### Alexander Station Lateral Crude Oil Pipeline

#### Legend

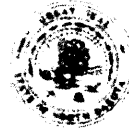
- Project Centerline
- PLSS Sections
- PLSS Townships





**NORTH DAKOTA**  
DEPARTMENT of HEALTH

ENVIRONMENTAL HEALTH SECTION  
Gold Seal Center, 918 E. Divide Ave.  
Bismarck, ND 58501-1947  
701 328.5200 (fax)  
www.ndhealth.gov



October 24, 2014

Ms. Karine Becker, Staff Specialist  
Keitu Engineers and Consultants, Inc.  
1403 27<sup>th</sup> Street NW  
Mandan, ND 58554

Re: Alexander Station Lateral Crude Oil Pipeline  
McKenzie County

Dear Ms. Becker:

This department has reviewed the information concerning the above-referenced project submitted under date of September 30, 2014, with respect to possible environmental impacts.

This department believes that environmental impacts from the proposed construction will be minor and can be controlled by proper construction methods. With respect to construction, we have the following comments:

1. All necessary measures must be taken to minimize fugitive dust emissions created during construction activities. Any complaints that may arise are to be dealt with in an efficient and effective manner.
2. Care is to be taken during construction activity near any water of the state to minimize adverse effects on a water body. This includes minimal disturbance of stream beds and banks to prevent excess siltation, and the replacement and revegetation of any disturbed area as soon as possible after work has been completed. Caution must also be taken to prevent spills of oil and grease that may reach the receiving water from equipment maintenance, and/or the handling of fuels on the site. Guidelines for minimizing degradation to waterways during construction are attached.
3. Projects disturbing one or more acres are required to have a permit to discharge storm water runoff until the site is stabilized by the reestablishment of vegetation or other permanent cover. Further information on the storm water permit may be obtained from the Department's website or by calling the Division of Water Quality (701-328-5210). Also, cities may impose additional requirements and/or specific best management practices for construction affecting their storm drainage system. Check with the local officials to be sure any local storm water management considerations are addressed.
4. Noise from construction activities may have adverse effects on persons who live near the construction area. Noise levels can be minimized by ensuring that construction equipment is equipped with a

Environmental Health  
Section Chief's Office  
701 328 5150

Division of  
Air Quality  
701 328 5188

Division of  
Municipal Facilities  
701 328 5211

Division of  
Waste Management  
701 328 5166

Division of  
Water Quality  
701 328 5210

Printed on recycled paper

recommended muffler in good working order. Noise effects can also be minimized by ensuring that construction activities are not conducted during early morning or late evening hours.

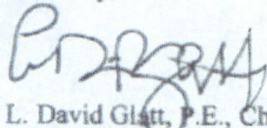
5. The proposed project appears to have the potential to be a source of emissions to the air capable of causing or contributing to air pollution and may be required to have an Air Pollution Control Permit to Construct/Operate as required by Chapter 33-15-14 of the North Dakota Air Pollution Control Rules. The applicant should contact the Department's Air Pollution Control Program at 701-328-5188 prior to commencing construction.
6. Projects that involve construction of pipelines should select locations that minimize the potential for environmental damage during construction and in the event of a spill, restrict fluids from reaching surface waters. Well placement should avoid close proximity to drainage areas and steep slopes. Environmental damage can be reduced by developing a spill response plan that emphasizes rapid deployment of prepositioned assets necessary to contain spills and subsequent cleanup. Proper surveillance and monitoring of pipelines is necessary for the early detection of leaks.

The department owns no land in or adjacent to the proposed improvements, nor does it have any projects scheduled in the area. In addition, we believe the proposed activities are consistent with the State Implementation Plan for the Control of Air Pollution for the State of North Dakota.

These comments are based on the information provided about the project in the above-referenced submittal. The U.S. Army Corps of Engineers may require a water quality certification from this department for the project if the project is subject to their Section 404 permitting process. Any additional information which may be required by the U.S. Army Corps of Engineers under the process will be considered by this department in our determination regarding the issuance of such a certification.

If you have any questions regarding our comments, please feel free to contact this office.

Sincerely,



L. David Glatt, P.E., Chief  
Environmental Health Section

LDG:cc  
Attach.



## Construction and Environmental Disturbance Requirements

These represent the minimum requirements of the North Dakota Department of Health. They ensure that minimal environmental degradation occurs as a result of construction or related work which has the potential to affect the waters of the State of North Dakota. All projects will be designed and implemented to restrict the losses or disturbances of soil, vegetative cover, and pollutants (chemical or biological) from a site.

### **Soils**

Prevent the erosion of exposed soil surfaces and trapping sediments being transported. Examples include, but are not restricted to, sediment dams or berms, diversion dikes, hay bales as erosion checks, riprap, mesh or burlap blankets to hold soil during construction, and immediately establishing vegetative cover on disturbed areas after construction is completed. Fragile and sensitive areas such as wetlands, riparian zones, delicate flora, or land resources will be protected against compaction, vegetation loss, and unnecessary damage.

### **Surface Waters**

All construction which directly or indirectly impacts aquatic systems will be managed to minimize impacts. All attempts will be made to prevent the contamination of water at construction sites from fuel spillage, lubricants, and chemicals, by following safe storage and handling procedures. Stream bank and stream bed disturbances will be controlled to minimize and/or prevent silt movement, nutrient upsurges, plant dislocation, and any physical, chemical, or biological disruption. The use of pesticides or herbicides in or near these systems is forbidden without approval from this Department.

### **Fill Material**

Any fill material placed below the high water mark must be free of top soils, decomposable materials, and persistent synthetic organic compounds (in toxic concentrations). This includes, but is not limited to, asphalt, tires, treated lumber, and construction debris. The Department may require testing of fill materials. All temporary fills must be removed. Debris and solid wastes will be removed from the site and the impacted areas restored as nearly as possible to the original condition.



September 30, 2014

Justin Kringstad  
North Dakota Industrial Commission  
Pipeline Authority  
600 E. Boulevard Ave. Dept. 405  
Bismarck, ND 58505-0840

**RE: Alexander Station Lateral Crude Oil Pipeline – McKenzie County**

Hiland Crude, LLC (Hiland) is proposing to construct a 4.5-mile-long crude oil pipeline in McKenzie County beginning spring 2015.

Due to the continuing demand for additional crude oil pipeline services, Hiland intends to expand the system's capacity. One pumping station is proposed to be added to boost capacity. This station may include a truck terminal, a 50,000 gallon tank, and pump equipment. Additional surface facilities installed will be limited to pipeline markers, rectifiers, "pig" launchers, receivers, and block valves. The North Dakota Public Service Commission Utility permit is required to provide the needed capacity to transport the increased production of crude oil from the Bakken and Three Forks formations.

Keitu Engineers & Consultants, Inc. (Keitu) provides the following description of Hiland's pipeline route.

- The pipeline originates five miles north-northeast of Alexander, North Dakota at a connection with Hiland's Market Center Pipeline system and runs 4.5 miles to the north, terminating at Hiland's Alexander Station, approximately 9.4 miles north of Alexander, North Dakota.
- The pipeline runs through the following legal descriptions:
  - T151N R101W Sections 6 and 7
  - T152N R101W Sections 30 and 31
  - T152W R102W Sections 24, 25, and 36

Keitu is contracted by Hiland to conduct the biological assessment of the 4.5-mile project corridor (1 mile wide) to be completed in June of 2014.

Enclosed is a map of the entire length of the pipeline route intended for the North Dakota Pipeline Authority to review. The North Dakota Public Service Commission, requires applicants to contact agencies for comment. We respectfully request that any specific species of concern known in the area is brought to our attention to ensure we focus on those items.

As always, Keitu appreciates the opportunity to assist our client and the regulatory agencies with compliance. I will serve as the primary Keitu contact and can be reached at (701) 667-1800 or via email at [kbecker@keitu.com](mailto:kbecker@keitu.com).

Karine Becker  
Staff Specialist

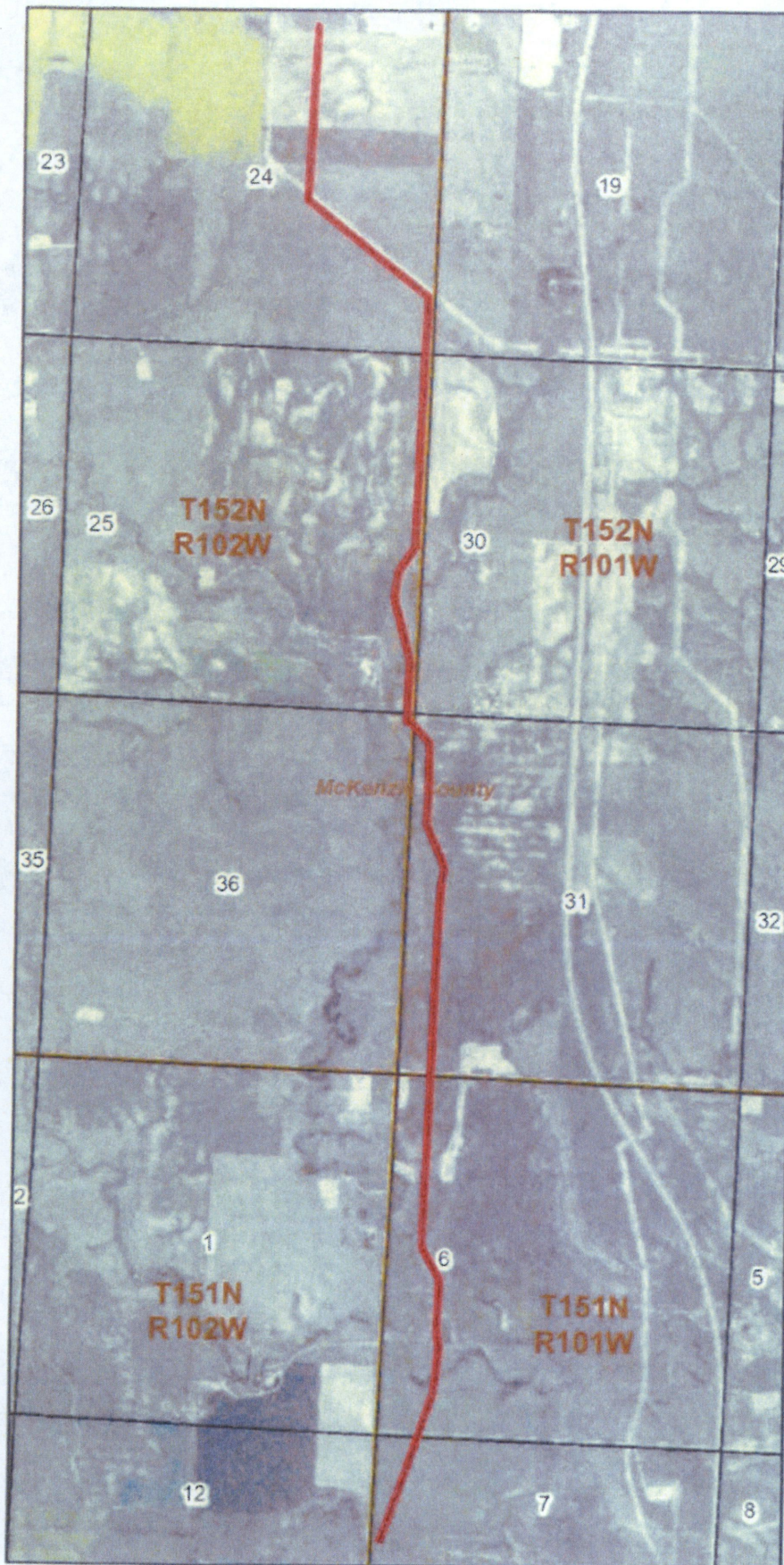
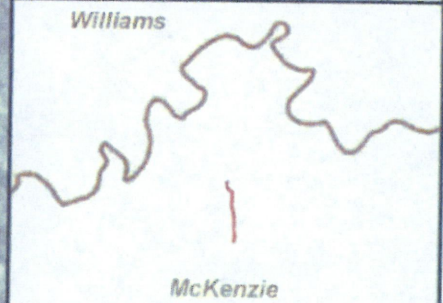
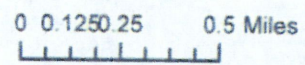
*Enclosure: Pipeline Route*



### Alexander Station Lateral Crude Oil Pipeline

#### Legend

- Project Centerline
- PLSS Sections
- PLSS Townships



September 30, 2014

Todd Sando  
State Engineer  
North Dakota State Water Commission  
900 East Boulevard Avenue, Dept 770  
Bismarck, ND 58505-0850

**RE: Alexander Station Lateral Crude Oil Pipeline – McKenzie County**

Hiland Crude, LLC (Hiland) is proposing to construct a 4.5-mile-long crude oil pipeline in McKenzie County beginning spring 2015.

Due to the continuing demand for additional crude oil pipeline services, Hiland intends to expand the system's capacity. One pumping station is proposed to be added to boost capacity. This station may include a truck terminal, a 50,000 gallon tank, and pump equipment. Additional surface facilities installed will be limited to pipeline markers, rectifiers, "pig" launchers, receivers, and block valves. The North Dakota Public Service Commission Utility permit is required to provide the needed capacity to transport the increased production of crude oil from the Bakken and Three Forks formations.

Keitu Engineers & Consultants, Inc. (Keitu) provides the following description of Hiland's pipeline route.

- The pipeline originates five miles north-northeast of Alexander, North Dakota at a connection with Hiland's Market Center Pipeline system and runs 4.5 miles to the north, terminating at Hiland's Alexander Station, approximately 9.4 miles north of Alexander, North Dakota.
- The pipeline runs through the following legal descriptions:
  - T151N R101W Sections 6 and 7
  - T152N R101W Sections 30 and 31
  - T152W R102W Sections 24, 25, and 36

Keitu is contracted by Hiland to conduct the biological assessment of the 4.5-mile project corridor (1 mile wide) to be completed in June of 2014.

Enclosed is a map of the entire length of the pipeline route intended for the North Dakota State Water Commission to review. The North Dakota Public Service Commission, requires applicants to contact agencies for comment. We respectfully request that any specific species of concern known in the area is brought to our attention to ensure we focus on those items.

As always, Keitu appreciates the opportunity to assist our client and the regulatory agencies with compliance. I will serve as the primary Keitu contact and can be reached at (701) 667-1800 or via email at [kbecker@keitu.com](mailto:kbecker@keitu.com).


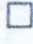

Karine Becker  
Staff Specialist

*Enclosure: Pipeline Route*



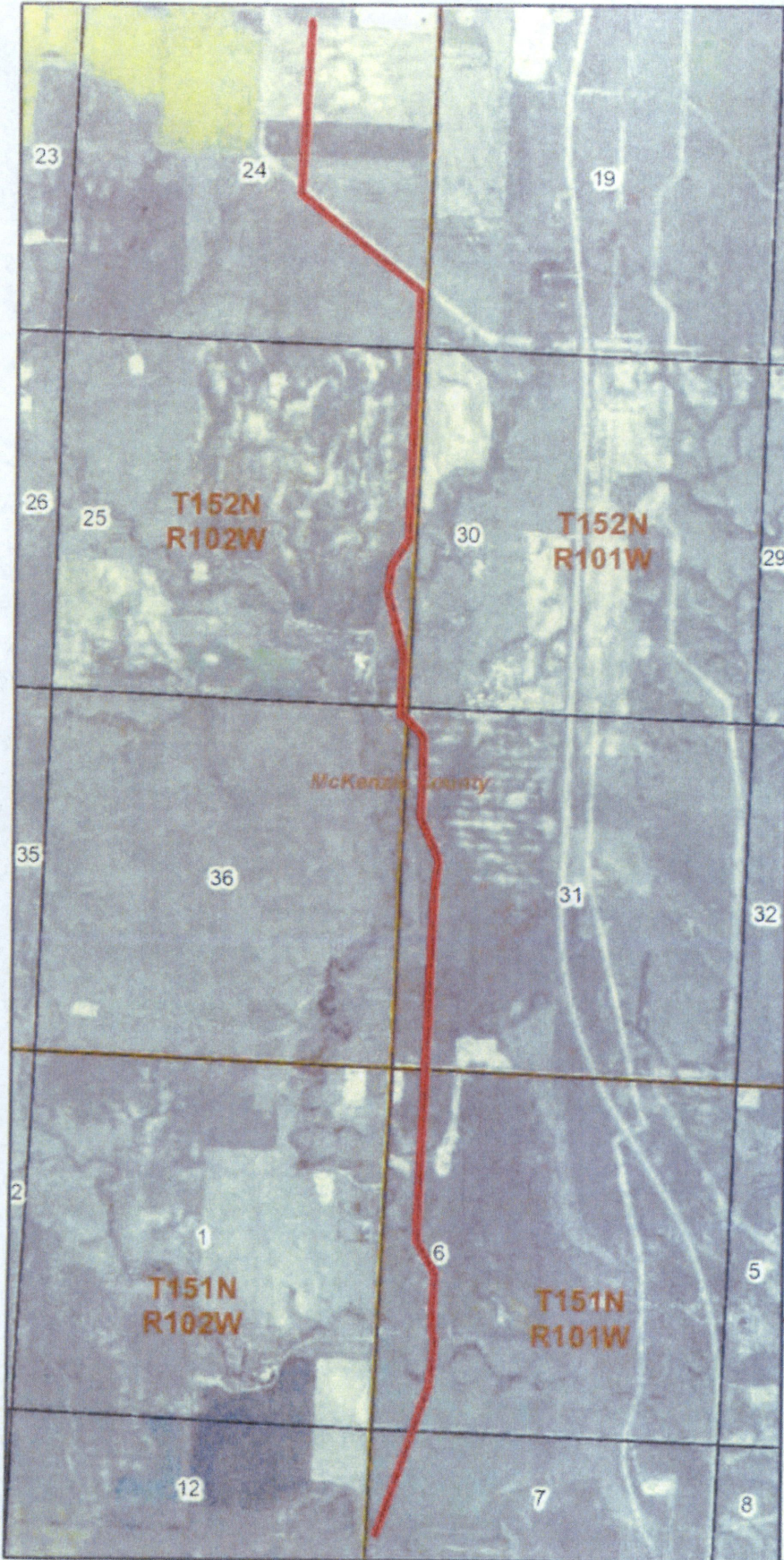
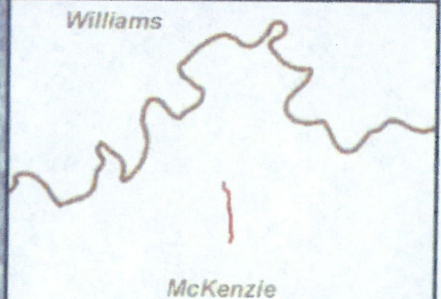
### Alexander Station Lateral Crude Oil Pipeline

#### Legend

-  Project Centerline
-  PLSS Sections
-  PLSS Townships



0 0.1250.25 0.5 Miles



September 30, 2014

Dave Glatt  
North Dakota Department of Health  
Environmental Health Section  
918 East Divide Avenue  
Bismarck, ND 58501-1947

**RE: Alexander Station Lateral Crude Oil Pipeline – McKenzie County**

Hiland Crude, LLC (Hiland) is proposing to construct a 4.5-mile-long crude oil pipeline in McKenzie County beginning spring 2015.

Due to the continuing demand for additional crude oil pipeline services, Hiland intends to expand the system's capacity. One pumping station is proposed to be added to boost capacity. This station may include a truck terminal, a 50,000 gallon tank, and pump equipment. Additional surface facilities installed will be limited to pipeline markers, rectifiers, "pig" launchers, receivers, and block valves. The North Dakota Public Service Commission Utility permit is required to provide the needed capacity to transport the increased production of crude oil from the Bakken and Three Forks formations.

Keitu Engineers & Consultants, Inc. (Keitu) provides the following description of Hiland's pipeline route.

- The pipeline originates five miles north-northeast of Alexander, North Dakota at a connection with Hiland's Market Center Pipeline system and runs 4.5 miles to the north, terminating at Hiland's Alexander Station, approximately 9.4 miles north of Alexander, North Dakota.
- The pipeline runs through the following legal descriptions:
  - T151N R101W Sections 6 and 7
  - T152N R101W Sections 30 and 31
  - T152W R102W Sections 24, 25, and 36

Keitu is contracted by Hiland to conduct the biological assessment of the 4.5-mile project corridor (1 mile wide) to be completed in June of 2014.

Enclosed is a map of the entire length of the pipeline route intended for the North Dakota Department of Health to review. The North Dakota Public Service Commission, requires applicants to contact agencies for comment. We respectfully request that any specific species of concern known in the area is brought to our attention to ensure we focus on those items

As always, Keitu appreciates the opportunity to assist our client and the regulatory agencies with compliance. I will serve as the primary Keitu contact and can be reached at (701) 667-1800 or via email at [kbecker@keitu.com](mailto:kbecker@keitu.com).

Karine Becker  
Staff Specialist

*Enclosure: Pipeline Route*



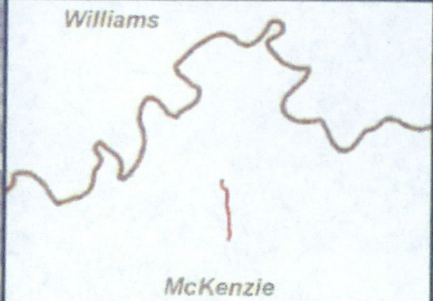
### Alexander Station Lateral Crude Oil Pipeline

#### Legend

- Project Centerline
- PLSS Sections
- PLSS Townships



0 0.1250.25 0.5 Miles



September 30, 2014

District 5 – Dickinson  
North Dakota Department of Transportation  
1700 Third Avenue West, Suite 101  
Dickinson, ND 58601-3009

**RE: Alexander Station Lateral Crude Oil Pipeline – McKenzie County**

Hiland Crude, LLC (Hiland) is proposing to construct a 4.5-mile-long crude oil pipeline in McKenzie County beginning spring 2015.

Due to the continuing demand for additional crude oil pipeline services, Hiland intends to expand the system's capacity. One pumping station is proposed to be added to boost capacity. This station may include a truck terminal, a 50,000 gallon tank, and pump equipment. Additional surface facilities installed will be limited to pipeline markers, rectifiers, "pig" launchers, receivers, and block valves. The North Dakota Public Service Commission Utility permit is required to provide the needed capacity to transport the increased production of crude oil from the Bakken and Three Forks formations.

Keitu Engineers & Consultants, Inc. (Keitu) provides the following description of Hiland's pipeline route.

- The pipeline originates five miles north-northeast of Alexander, North Dakota at a connection with Hiland's Market Center Pipeline system and runs 4.5 miles to the north, terminating at Hiland's Alexander Station, approximately 9.4 miles north of Alexander, North Dakota.
- The pipeline runs through the following legal descriptions:
  - T151N R101W Sections 6 and 7
  - T152N R101W Sections 30 and 31
  - T152W R102W Sections 24, 25, and 36

Keitu is contracted by Hiland to conduct the biological assessment of the 4.5-mile project corridor (1 mile wide) to be completed in June of 2014.

Enclosed is a map of the entire length of the pipeline route intended for the North Dakota Department of Transportation to review. The North Dakota Public Service Commission, requires applicants to contact agencies for comment. We respectfully request that any specific species of concern known in the area is brought to our attention to ensure we focus on those items.

As always, Keitu appreciates the opportunity to assist our client and the regulatory agencies with compliance. I will serve as the primary Keitu contact and can be reached at (701) 667-1800 or via email at [kbecker@keitu.com](mailto:kbecker@keitu.com).

Karine Becker  
Staff Specialist

*Enclosure Pipeline Route*



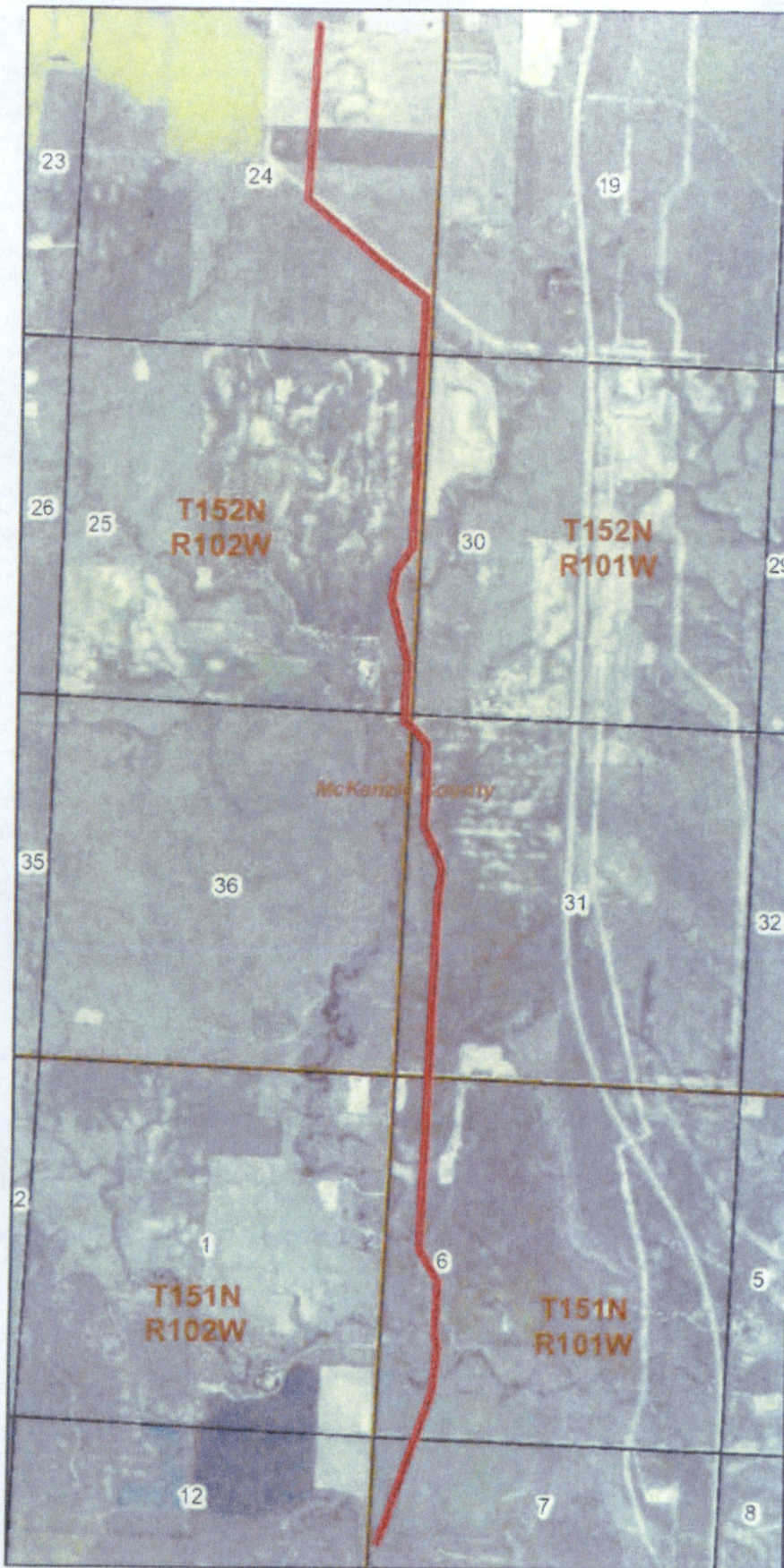
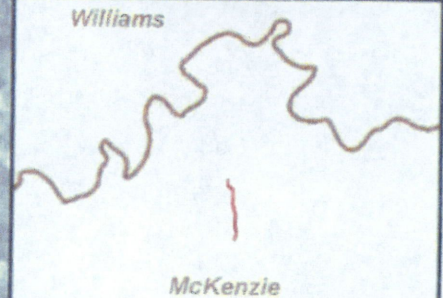
### Alexander Station Lateral Crude Oil Pipeline

#### Legend

- Project Centerline
- PLSS Sections
- PLSS Townships



0 0.1250.25 0.5 Miles



September 30, 2014

Mike Brand, Director  
Surface Management Division  
ND Department of Trust Lands  
1707 N 9<sup>th</sup> Street, PO Box 5523  
Bismarck, ND 58506-5523

**RE: Alexander Station Lateral Crude Oil Pipeline – McKenzie County**

Hiland Crude, LLC (Hiland) is proposing to construct a 4.5-mile-long crude oil pipeline in McKenzie County beginning spring 2015.

Due to the continuing demand for additional crude oil pipeline services, Hiland intends to expand the system's capacity. One pumping station is proposed to be added to boost capacity. This station may include a truck terminal, a 50,000 gallon tank, and pump equipment. Additional surface facilities installed will be limited to pipeline markers, rectifiers, "pig" launchers, receivers, and block valves. The North Dakota Public Service Commission Utility permit is required to provide the needed capacity to transport the increased production of crude oil from the Bakken and Three Forks formations.

Keitu Engineers & Consultants, Inc. (Keitu) provides the following description of Hiland's pipeline route.

- The pipeline originates five miles north-northeast of Alexander, North Dakota at a connection with Hiland's Market Center Pipeline system and runs 4.5 miles to the north, terminating at Hiland's Alexander Station, approximately 9.4 miles north of Alexander, North Dakota.
- The pipeline runs through the following legal descriptions:
  - T151N R101W Sections 6 and 7
  - T152N R101W Sections 30 and 31
  - T152W R102W Sections 24, 25, and 36

Keitu is contracted by Hiland to conduct the biological assessment of the 4.5-mile project corridor (1 mile wide) to be completed in June of 2014.

Enclosed is a map of the entire length of the pipeline route intended for the North Dakota Department of Trust Lands to review. The North Dakota Public Service Commission, requires applicants to contact agencies for comment. We respectfully request that any specific species of concern known in the area is brought to our attention to ensure we focus on those items.

As always, Keitu appreciates the opportunity to assist our client and the regulatory agencies with compliance. I will serve as the primary Keitu contact and can be reached at (701) 667-1800 or via email at [kbecker@keitu.com](mailto:kbecker@keitu.com).




Karine Becker  
Staff Specialist

*Enclosure: Pipeline Route*




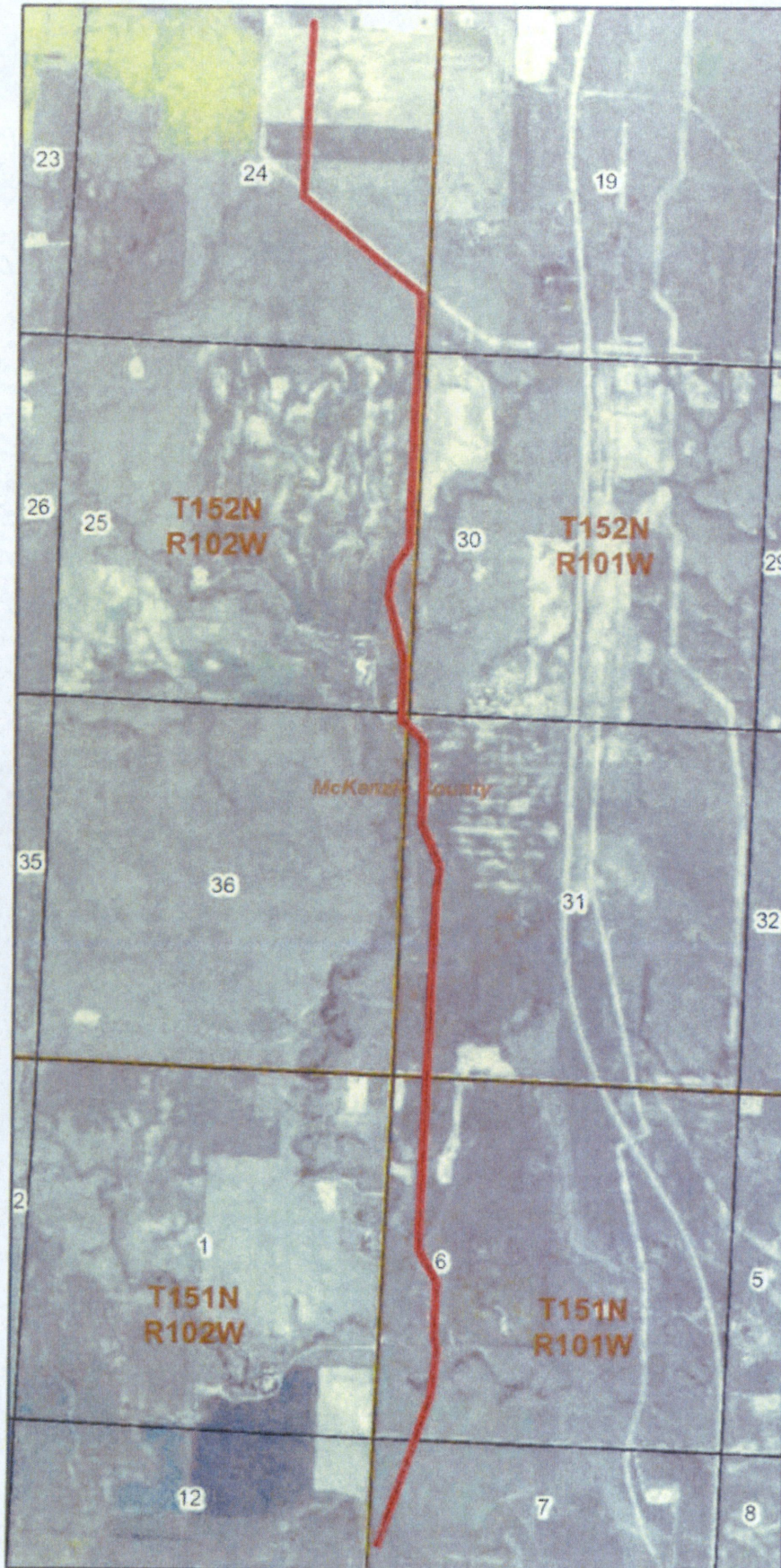
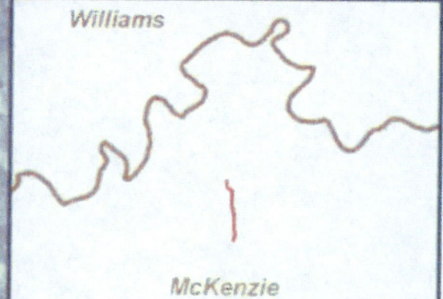
### Alexander Station Lateral Crude Oil Pipeline

#### Legend

-  Project Centerline
-  PLSS Sections
-  PLSS Townships



0 0.1250.25 0.5 Miles  




**From:** [Karine Becker](#)  
**To:** [Undisclosed recipients](#)  
**Bcc:** ["ndaero@nd.gov"](#); ["ndag@nd.gov"](#); ["ndseo@nd.gov"](#); ["labor@nd.gov"](#); ["cte@nd.gov"](#); ["commerce@nd.gov"](#); ["energyimpact@nd.gov"](#); ["hhanley@nd.gov"](#); ["scott.hochhalter@ndsu.edu"](#); ["levihovec@co.mckenzie.nd.us"](#); ["ndda@nd.gov"](#)  
**Subject:** Alexander Tank Farm Crude Oil Pipeline  
**Date:** Friday, August 07, 2015 12:00:50 PM  
**Attachments:** [ATF\\_Overview8x11\\_V01.pdf](#)  
[image001.png](#)

---

Hiland Crude, LLC (Hiland) is proposing the conversion of an approximately 4.5-mile-long, 8-inch existing crude oil gathering pipeline to a transmission line. The pipeline is located within McKenzie County, North Dakota and is known as the Alexander Tank Farm Crude Oil Pipeline (Project), which connects to Hiland's Market Center Pipeline System.

The pipeline is buried underground. No new pumping facilities will be needed at this time. No new surface facilities will be installed for this Project. The North Dakota Public Service Commission Utility permit is required to convert this system to a transmission line.

Keitu Engineers and Consultants, Inc. (Keitu) provides the following description of Hiland's pipeline route.

- The pipeline originates five miles north-northeast of Alexander, North Dakota at a connection with the Market Center System and runs 4.5 miles north to Hiland's Alexander Station.
- The pipeline runs through the following legal descriptions:
  - T151N R101W Sections 7 and 6
  - T152N R101W Section 31
  - T152N R102W Sections 36, 25, and 24

Keitu was contracted by Hiland to conduct the biological assessment of the 4.5-mile project corridor (1-mile wide) conducted in June 2014.

Attached is a map of the entire length of the pipeline route intended for review. The North Dakota Public Service Commission requires applicants to contact agencies listed in their administrative code. We respectfully request that any specific items of concern known in the area is brought to our attention to ensure we focus on those items.

As always, Keitu appreciates the opportunity to assist our client and regulatory agencies with compliance. I will serve as the primary Keitu contact and can be reached at (701) 667-1800 or via email at [kbecker@keitu.com](mailto:kbecker@keitu.com).

Thank you,

Karine Becker  
Project Manager




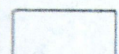
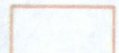
Keitu Engineers & Consultants, Inc.

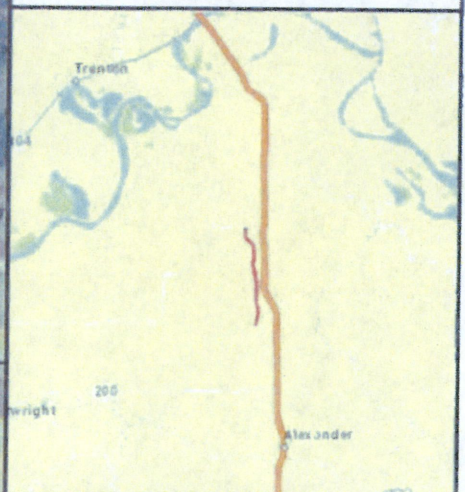
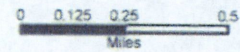
1403 27th St NW  
PO Box 98  
Mandan ND 58154  
(701) 667 1800 [www.berd.com](http://www.berd.com)



Overview Map  
Alexander Tank Farm  
Crude Oil Pipeline

Legend

-  Project Centerline
-  Section
-  Township



**From:** Karine Becker  
**To:** "dhseo@nd.gov"  
**Subject:** Alexander Tank Farm Crude Oil Pipeline  
**Date:** Friday, August 07, 2015 12:04:21 PM  
**Attachments:** [image001.png](#)  
[ATF\\_Overview@x11\\_V01.pdf](#)

---

Hiland Crude, LLC (Hiland) is proposing the conversion of an approximately 4.5-mile-long, 8-inch existing crude oil gathering pipeline to a transmission line. The pipeline is located within McKenzie County, North Dakota and is known as the Alexander Tank Farm Crude Oil Pipeline (Project), which connects to Hiland's Market Center Pipeline System.

The pipeline is buried underground. No new pumping facilities will be needed at this time. No new surface facilities will be installed for this Project. The North Dakota Public Service Commission Utility permit is required to convert this system to a transmission line.

Keitu Engineers and Consultants, Inc. (Keitu) provides the following description of Hiland's pipeline route.

- The pipeline originates five miles north-northeast of Alexander, North Dakota at a connection with the Market Center System and runs 4.5 miles north to Hiland's Alexander Station.
- The pipeline runs through the following legal descriptions:
  - T151N R101W Sections 7 and 6
  - T152N R101W Section 31
  - T152N R102W Sections 36, 25, and 24

Keitu was contracted by Hiland to conduct the biological assessment of the 4.5-mile project corridor (1-mile wide) conducted in June 2014.

Attached is a map of the entire length of the pipeline route intended for review. The North Dakota Public Service Commission requires applicants to contact agencies listed in their administrative code. We respectfully request that any specific items of concern known in the area is brought to our attention to ensure we focus on those items.

As always, Keitu appreciates the opportunity to assist our client and regulatory agencies with compliance. I will serve as the primary Keitu contact and can be reached at (701) 667-1800 or via email at [kbecker@keitu.com](mailto:kbecker@keitu.com).

Thank you,

Karine Becker  
Project Manager



Keitu Engineers & Consultants, Inc.  
1403 27th St NW

PO Box 98


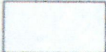

Mandan ND 58504

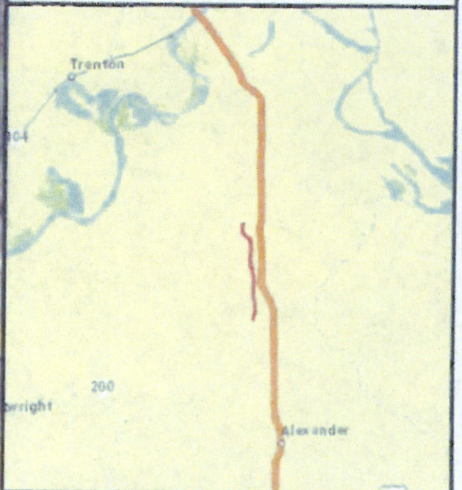
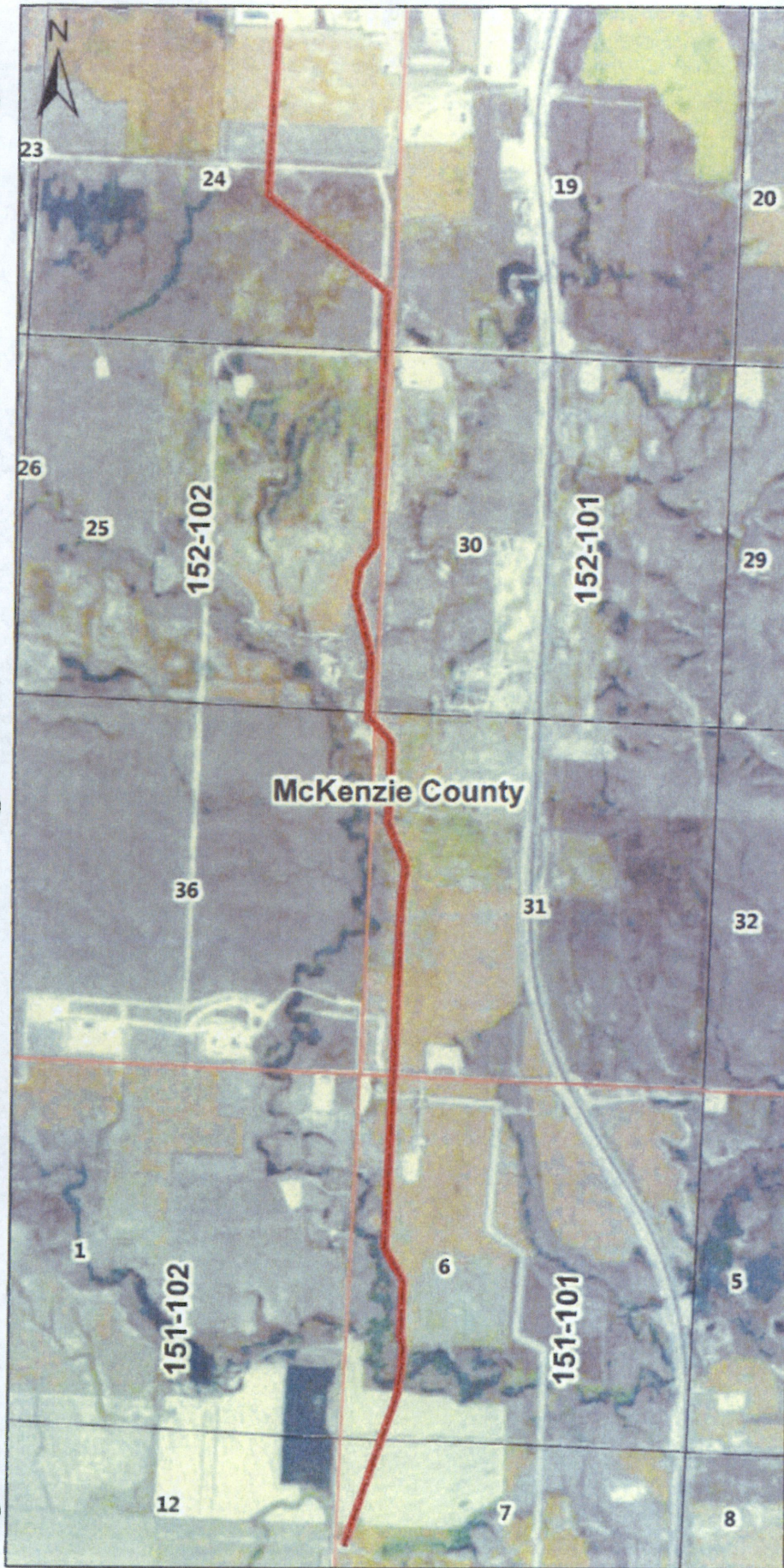
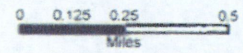
(701) 667-1800 [www.k21.com](http://www.k21.com)



**Overview Map  
Alexander Tank Farm  
Crude Oil Pipeline**

**Legend**

-  Project Centerline
-  Section
-  Township



**From:** Karine Becker  
**To:** "ndcinfo@nd.gov"  
**Subject:** Alexander Tank Farm Crude Oil Pipeline  
**Date:** Friday, August 07, 2015 12:05:30 PM  
**Attachments:** [image001.png](#)  
[ATF\\_Overview8x11\\_V01.pdf](#)

---

North Dakota Industrial Commission,

Hiland Crude, LLC (Hiland) is proposing the conversion of an approximately 4.5-mile-long, 8-inch existing crude oil gathering pipeline to a transmission line. The pipeline is located within McKenzie County, North Dakota and is known as the Alexander Tank Farm Crude Oil Pipeline (Project), which connects to Hiland's Market Center Pipeline System.

The pipeline is buried underground. No new pumping facilities will be needed at this time. No new surface facilities will be installed for this Project. The North Dakota Public Service Commission Utility permit is required to convert this system to a transmission line.

Keitu Engineers and Consultants, Inc. (Keitu) provides the following description of Hiland's pipeline route.

- The pipeline originates five miles north-northeast of Alexander, North Dakota at a connection with the Market Center System and runs 4.5 miles north to Hiland's Alexander Station.
- The pipeline runs through the following legal descriptions:
  - T151N R101W Sections 7 and 6
  - T152N R101W Section 31
  - T152N R102W Sections 36, 25, and 24

Keitu was contracted by Hiland to conduct the biological assessment of the 4.5-mile project corridor (1-mile wide) conducted in June 2014.

Attached is a map of the entire length of the pipeline route intended for review. The North Dakota Public Service Commission requires applicants to contact agencies listed in their administrative code. We respectfully request that any specific items of concern known in the area is brought to our attention to ensure we focus on those items.

As always, Keitu appreciates the opportunity to assist our client and regulatory agencies with compliance. I will serve as the primary Keitu contact and can be reached at (701) 667-1800 or via email at [kbecker@keitu.com](mailto:kbecker@keitu.com).

Thank you,

Karine Becker  
Project Manager


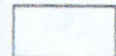
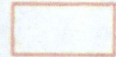


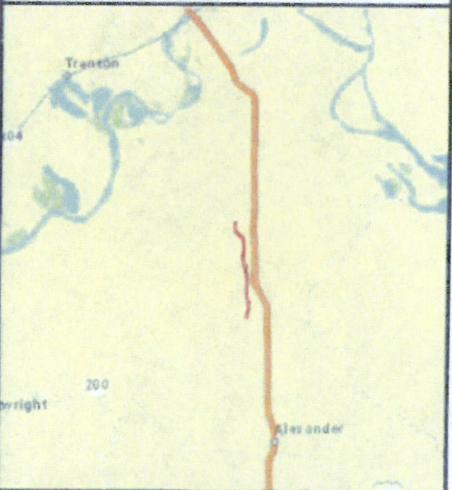
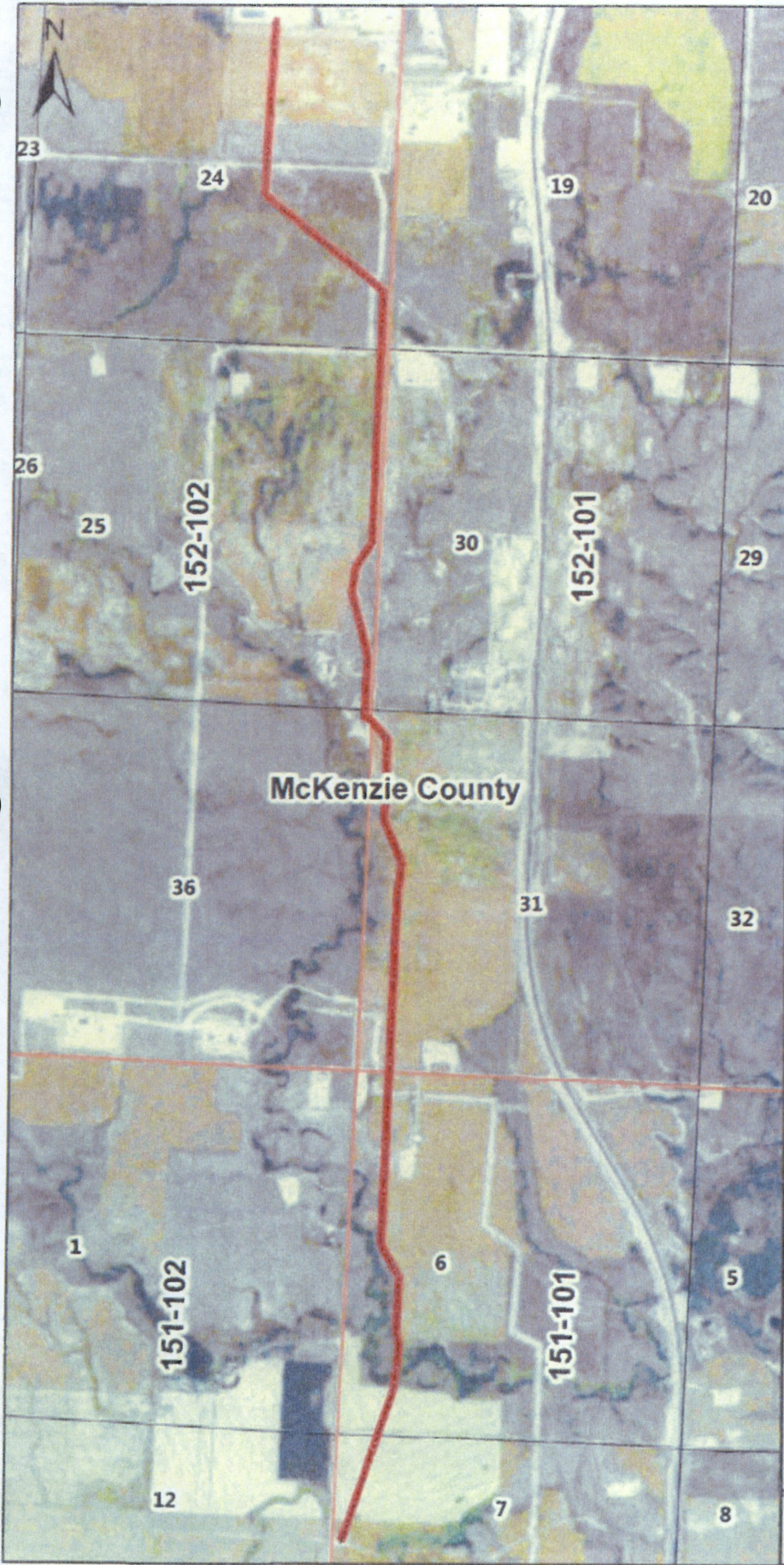
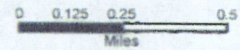
Ketiv Engineers & Consultants, Inc.  
1403 27th St NW  
PO Box 98  
Mandan ND 58554  
(701) 667-1800 [www.ketiv.com](http://www.ketiv.com)



**Overview Map  
Alexander Tank Farm  
Crude Oil Pipeline**

**Legend**

-  Project Centerline
-  Section
-  Township



**From:** Karine Becker  
**To:** "ndicinfo@nd.gov"  
**Subject:** Alexander Tank Farm Crude Oil Pipeline  
**Date:** Friday, August 07, 2015 12:06:25 PM  
**Attachments:** [image001.png](#)  
[ATF\\_Overview8x11\\_V01.pdf](#)

---

North Dakota Transmission Authority,

Hiland Crude, LLC (Hiland) is proposing the conversion of an approximately 4.5-mile-long, 8-inch existing crude oil gathering pipeline to a transmission line. The pipeline is located within McKenzie County, North Dakota and is known as the Alexander Tank Farm Crude Oil Pipeline (Project), which connects to Hiland's Market Center Pipeline System.

The pipeline is buried underground. No new pumping facilities will be needed at this time. No new surface facilities will be installed for this Project. The North Dakota Public Service Commission Utility permit is required to convert this system to a transmission line.

Keitu Engineers and Consultants, Inc. (Keitu) provides the following description of Hiland's pipeline route.

- The pipeline originates five miles north-northeast of Alexander, North Dakota at a connection with the Market Center System and runs 4.5 miles north to Hiland's Alexander Station.
- The pipeline runs through the following legal descriptions:
  - T151N R101W Sections 7 and 6
  - T152N R101W Section 31
  - T152N R102W Sections 36, 25, and 24

Keitu was contracted by Hiland to conduct the biological assessment of the 4.5-mile project corridor (1-mile wide) conducted in June 2014.

Attached is a map of the entire length of the pipeline route intended for review. The North Dakota Public Service Commission requires applicants to contact agencies listed in their administrative code. We respectfully request that any specific items of concern known in the area is brought to our attention to ensure we focus on those items.

As always, Keitu appreciates the opportunity to assist our client and regulatory agencies with compliance. I will serve as the primary Keitu contact and can be reached at (701) 667-1800 or via email at [kbecker@keitu.com](mailto:kbecker@keitu.com).

Thank you,

Karine Becker  
Project Manager


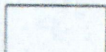
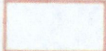


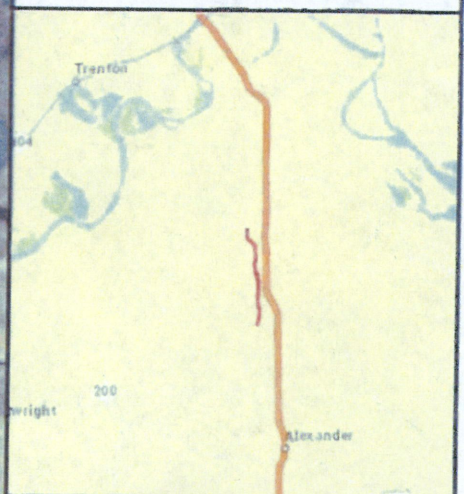
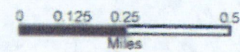
Keita Engineers & Consultants, Inc.  
1403 27th St NW  
PO Box 98  
Mandan ND 58554  
701.667-1800 [www.keita.com](http://www.keita.com)



**Overview Map  
Alexander Tank Farm  
Crude Oil Pipeline**

**Legend**

-  Project Centerline
-  Section
-  Township





1403 27th STREET NW  
PO BOX 98  
MANDAN, ND 58554-0098  
701-667-1800

August 7, 2015

Office of Governor  
State Of North Dakota  
600 East Boulevard Avenue  
Bismarck, ND 58505-0100

Hiland Crude, LLC (Hiland) is proposing the conversion of an approximately 4.5-mile-long, 8-inch existing crude oil gathering pipeline to a transmission line. The pipeline is located within McKenzie County, North Dakota and is known as the Alexander Tank Farm Crude Oil Pipeline, which connects to Hiland's Market Center Pipeline System.

The pipeline is buried underground. No new pumping facilities will be needed at this time. No new surface facilities will be installed for this project. The North Dakota Public Service Commission Utility permit is required to convert this system to a transmission line. Keitu Engineers and Consultants, Inc. (Keitu) provides the following description of Hiland's pipeline route.

- The pipeline originates five miles north-northeast of Alexander, North Dakota at a connection with the Market Center System and runs 4.5 miles north to Hiland's Alexander Station.
- The pipeline runs through the following legal descriptions:
  - T151N R101W Sections 7 and 6
  - T152N R101W Section 31
  - T152N R102W Sections 36, 25, and 24

Keitu was contracted by Hiland to conduct the biological assessment of the 4.5-mile project corridor (1-mile wide) conducted in June 2014.

Attached is a map of the entire length of the pipeline route intended for review. The North Dakota Public Service Commission requires applicants to contact agencies listed in their administrative code. We respectfully request that any specific items of concern known in the area is brought to our attention to ensure we focus on those items.

As always, Keitu appreciates the opportunity to assist our client and regulatory agencies with compliance. I will serve as the primary Keitu contact and can be reached at (701) 667-1300 or via email at [kbecker@keitu.com](mailto:kbecker@keitu.com)

Sincerely,




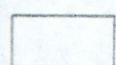
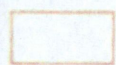
Karine R. Becker  
Project Manager

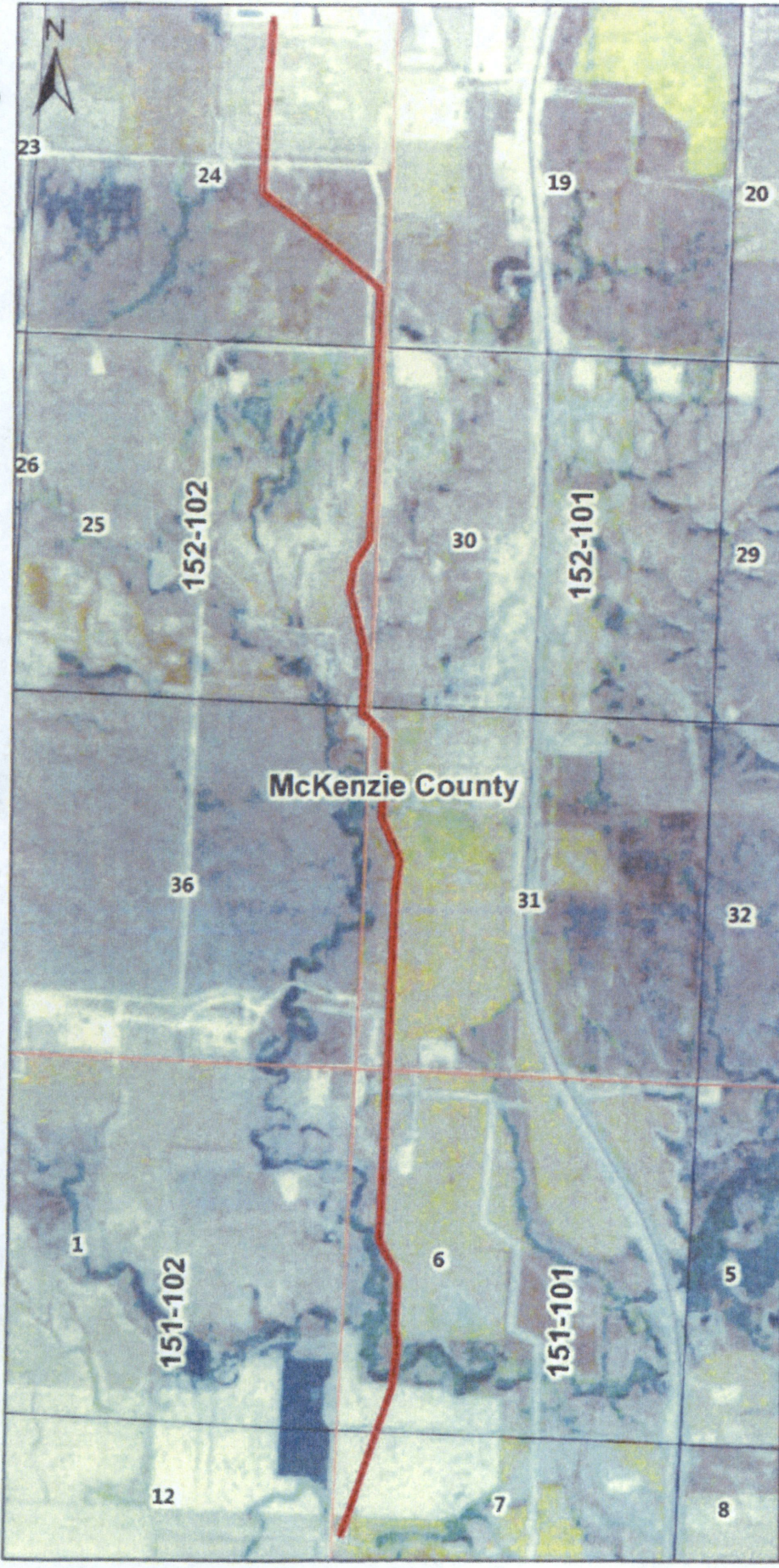
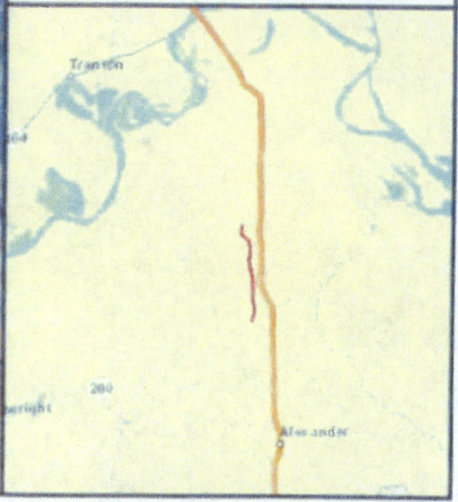
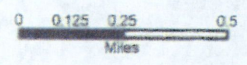
*Enclosure Pipeline Route*



**Overview Map  
Alexander Tank Farm  
Crude Oil Pipeline**

**Legend**

-  Project Centerline
-  Section
-  Township





1403 27th STREET NW  
PO BOX 98  
MANDAN, ND 58554-0098  
701-667-1800

August 7, 2015

Job Service of North Dakota  
PO Box 5507  
Bismarck, ND 58506-5507

Hiland Crude, LLC (Hiland) is proposing the conversion of an approximately 4.5-mile-long, 8-inch existing crude oil gathering pipeline to a transmission line. The pipeline is located within McKenzie County, North Dakota and is known as the Alexander Tank Farm Crude Oil Pipeline, which connects to Hiland's Market Center Pipeline System.

The pipeline is buried underground. No new pumping facilities will be needed at this time. No new surface facilities will be installed for this project. The North Dakota Public Service Commission Utility permit is required to convert this system to a transmission line. Keitu Engineers and Consultants, Inc. (Keitu) provides the following description of Hiland's pipeline route.

- The pipeline originates five miles north-northeast of Alexander, North Dakota at a connection with the Market Center System and runs 4.5 miles north to Hiland's Alexander Station.
- The pipeline runs through the following legal descriptions:
  - T151N R101W Sections 7 and 6
  - T152N R101W Section 31
  - T152N R102W Sections 36, 25, and 24

Keitu was contracted by Hiland to conduct the biological assessment of the 4.5-mile project corridor (1-mile wide) conducted in June 2014.

Attached is a map of the entire length of the pipeline route intended for review. The North Dakota Public Service Commission requires applicants to contact agencies listed in their administrative code. We respectfully request that any specific items of concern known in the area is brought to our attention to ensure we focus on those items.

As always, Keitu appreciates the opportunity to assist our client and regulatory agencies with compliance. I will serve as the primary Keitu contact and can be reached at (701) 667-1800 or via email at [kbecker@keitu.com](mailto:kbecker@keitu.com)

Sincerely,




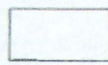
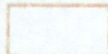
Karine R. Becker  
Project Manager

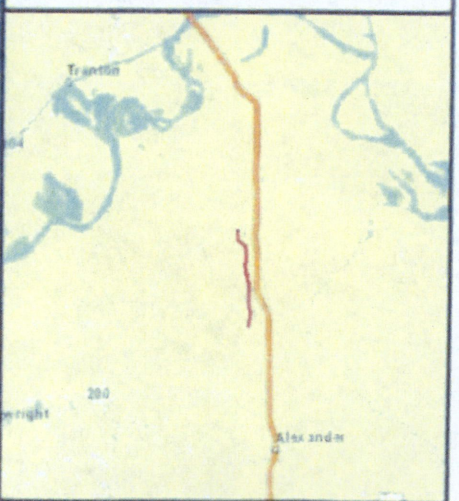
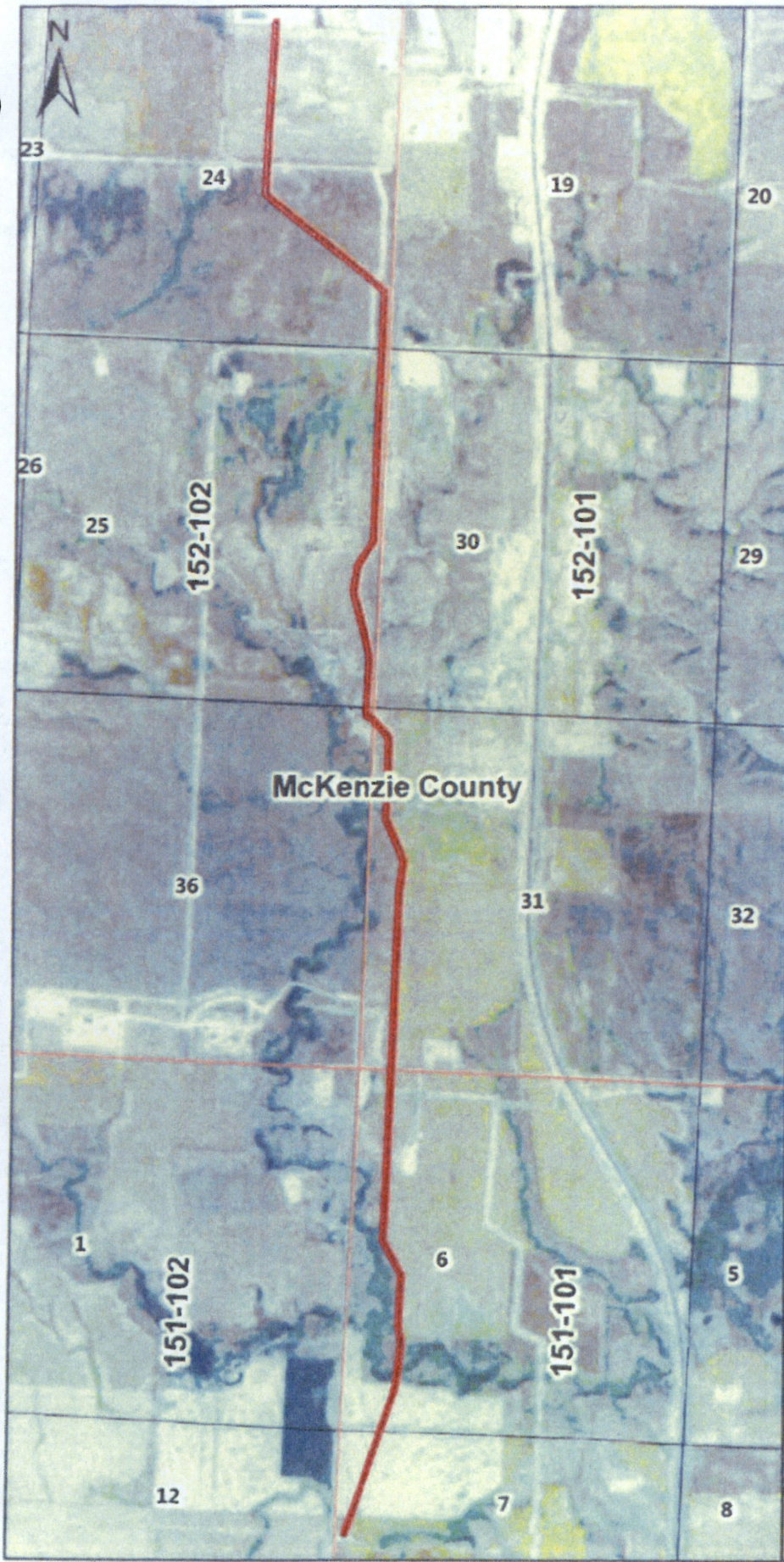
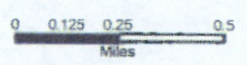
*Enclosure Pipeline Route*



**Overview Map  
Alexander Tank Farm  
Crude Oil Pipeline**

**Legend**

-  Project Centerline
-  Section
-  Township





1403 27th STREET NW  
PO BOX 98  
MANDAN, ND 58554-0098  
701-667-1800

August 7, 2015

United States Department of Defense  
1400 Defense Pentagon  
Washington, DC 20301-1400

Hiland Crude, LLC (Hiland) is proposing the conversion of an approximately 4.5-mile-long, 8-inch existing crude oil gathering pipeline to a transmission line. The pipeline is located within McKenzie County, North Dakota and is known as the Alexander Tank Farm Crude Oil Pipeline, which connects to Hiland's Market Center Pipeline System.

The pipeline is buried underground. No new pumping facilities will be needed at this time. No new surface facilities will be installed for this project. The North Dakota Public Service Commission Utility permit is required to convert this system to a transmission line. Keitu Engineers and Consultants, Inc. (Keitu) provides the following description of Hiland's pipeline route.

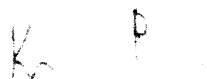
- The pipeline originates five miles north-northeast of Alexander, North Dakota at a connection with the Market Center System and runs 4.5 miles north to Hiland's Alexander Station.
- The pipeline runs through the following legal descriptions:
  - T151N R101W Sections 7 and 6
  - T152N R101W Section 31
  - T152N R102W Sections 36, 25, and 24

Keitu was contracted by Hiland to conduct the biological assessment of the 4.5-mile project corridor (1-mile wide) conducted in June 2014.

Attached is a map of the entire length of the pipeline route intended for review. The North Dakota Public Service Commission requires applicants to contact agencies listed in their administrative code. We respectfully request that any specific items of concern known in the area is brought to our attention to ensure we focus on those items.

As always, Keitu appreciates the opportunity to assist our client and regulatory agencies with compliance. I will serve as the primary Keitu contact and can be reached at 701, 667-1800 or via email at [kbecker@keitu.com](mailto:kbecker@keitu.com)

Sincerely,



Karne R. Becker  
Project Manager

*Enclosure Pipeline Route*



Overview Map  
Alexander Tank Farm  
Crude Oil Pipeline

Legend

- Project Centerline
- Section
- Township

