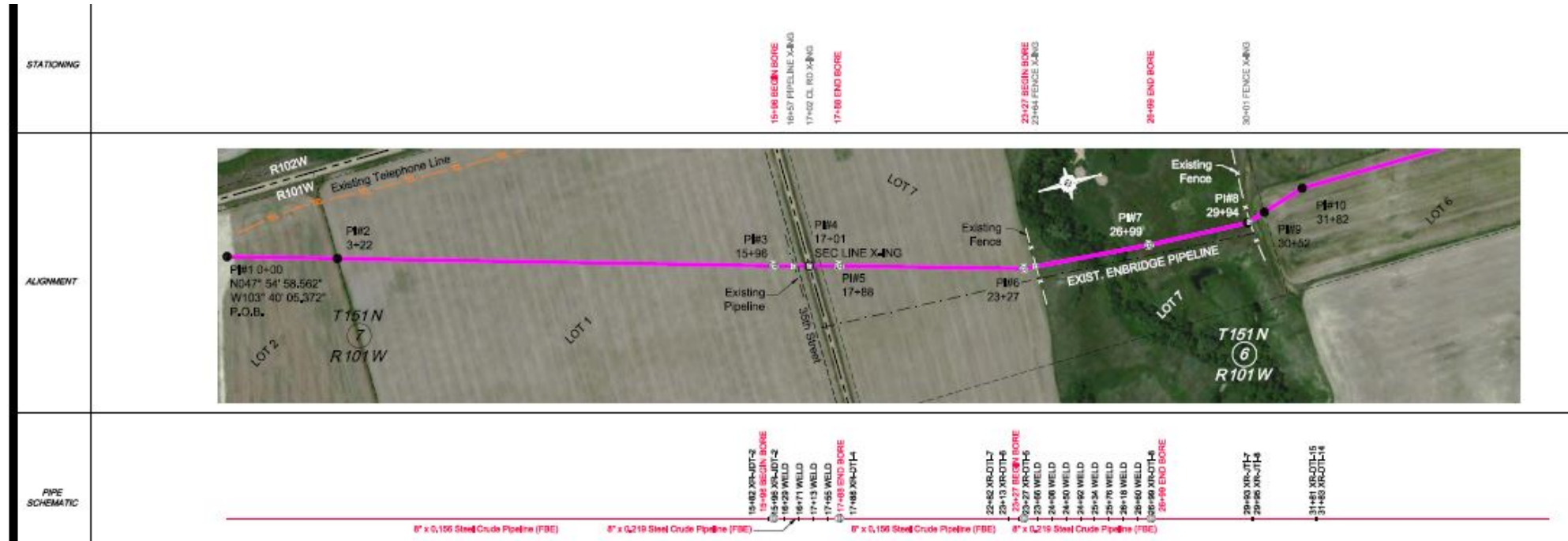


Appendix A

Aerial View Station 0+00 thru Station 31+82



Station 0+00 to Station 1+00



Station 2+00



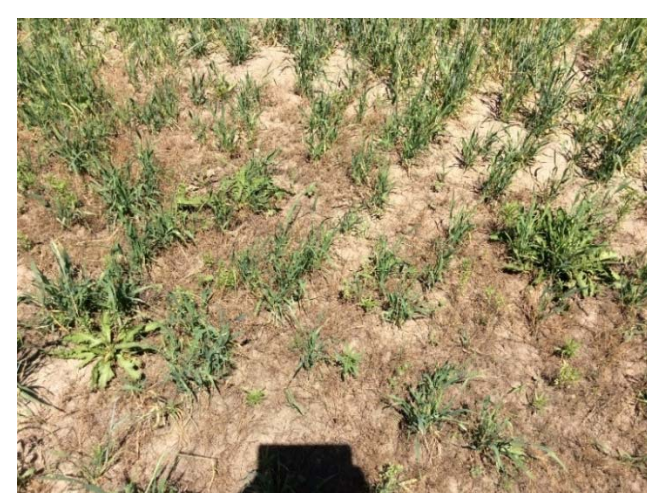
Station 4+50



Sation 5+50



Station 6+00



Station 8+00



Station 15+96 "PI#3"

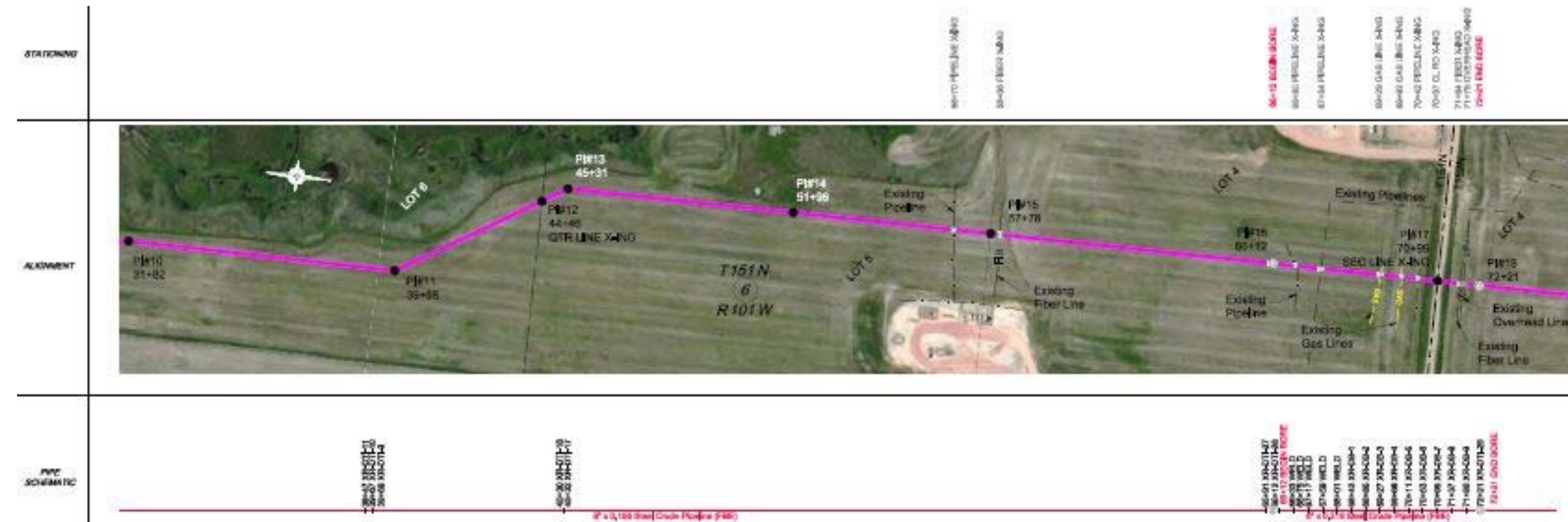


Station 17+86 "PI#5"



Station 26+99 "PI#7"

Aerial View Station 31+82 thru Station 72+21 "PI#10 thru PI#18"



Station 31+99 thru 51+98 "PI#10 thru PI#14"
Reduction in crop growth within easement.



Station 51+98 North of PI#14 the crops have uniformity Good surface conditions.



Station 57+71 "Between PI#15 and PI#17"
Surface rocks within easement observed.



Station 65+12 "PI#16 View looking South"

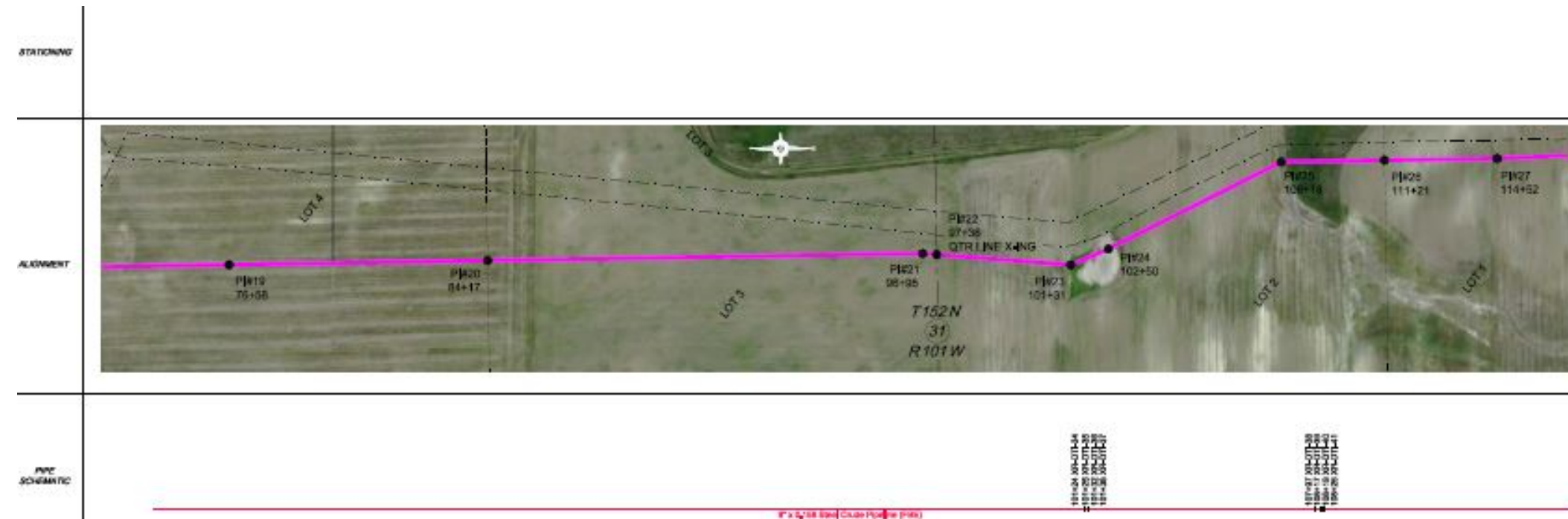


Station 65+12 "PI#16 View looking North"



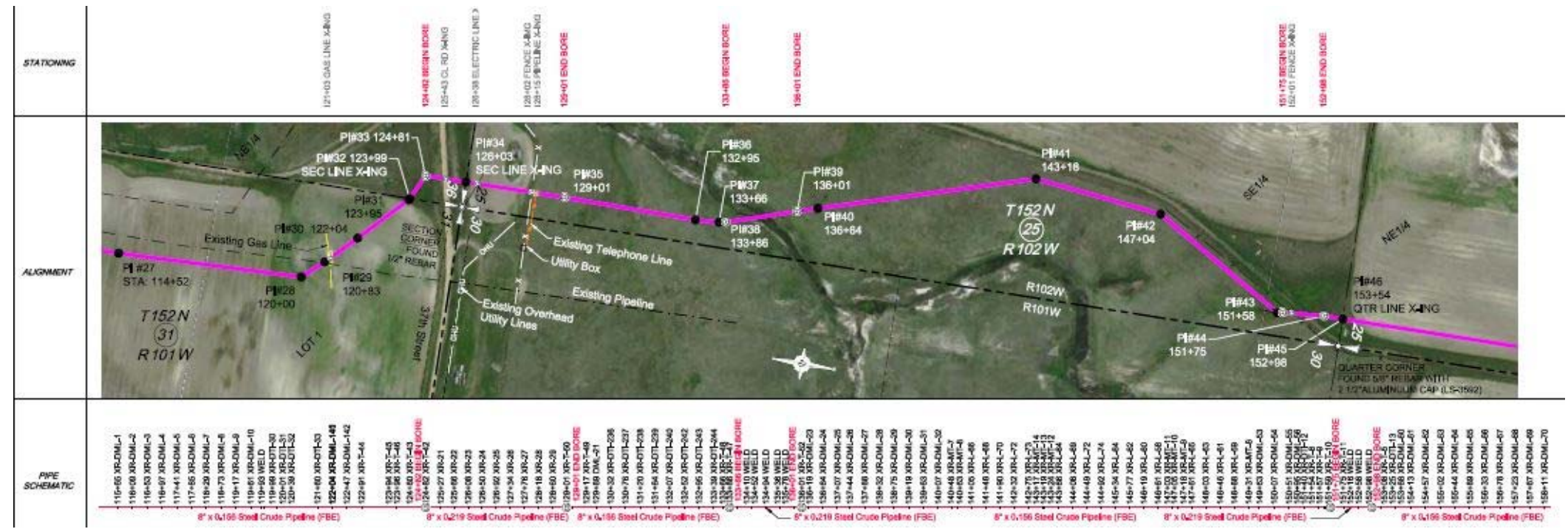
Station 70+99 "PI#17 View looking South"

Aerial View Station 76+58 thru Station 114+52 "PI#19 thru PI#27"



Station 96+25 thru 114+52 "PI#21 to PI#27 there are isolated areas where there is reduction in crop coverage.

Aerial View Station 114+52 thru Station 153+54 "PI#27 thru PI#45"

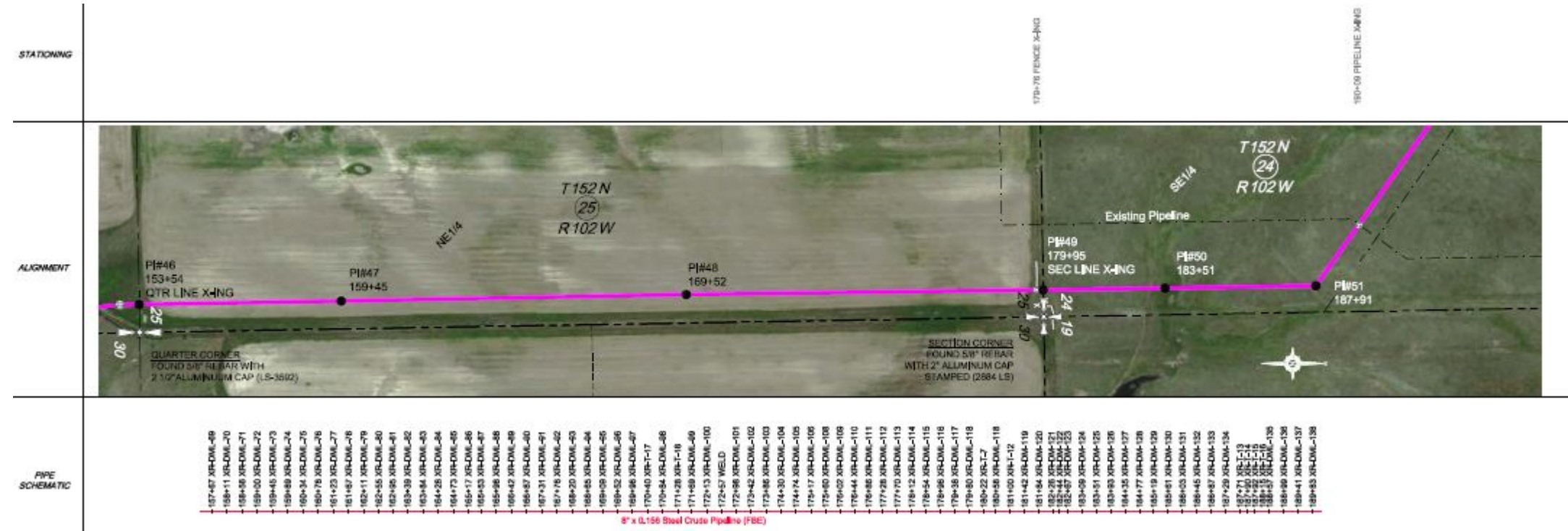


Station 123+95 "PI#31 Crop appears to be uniform in growth
 The subject area appears to have been left unrestored.



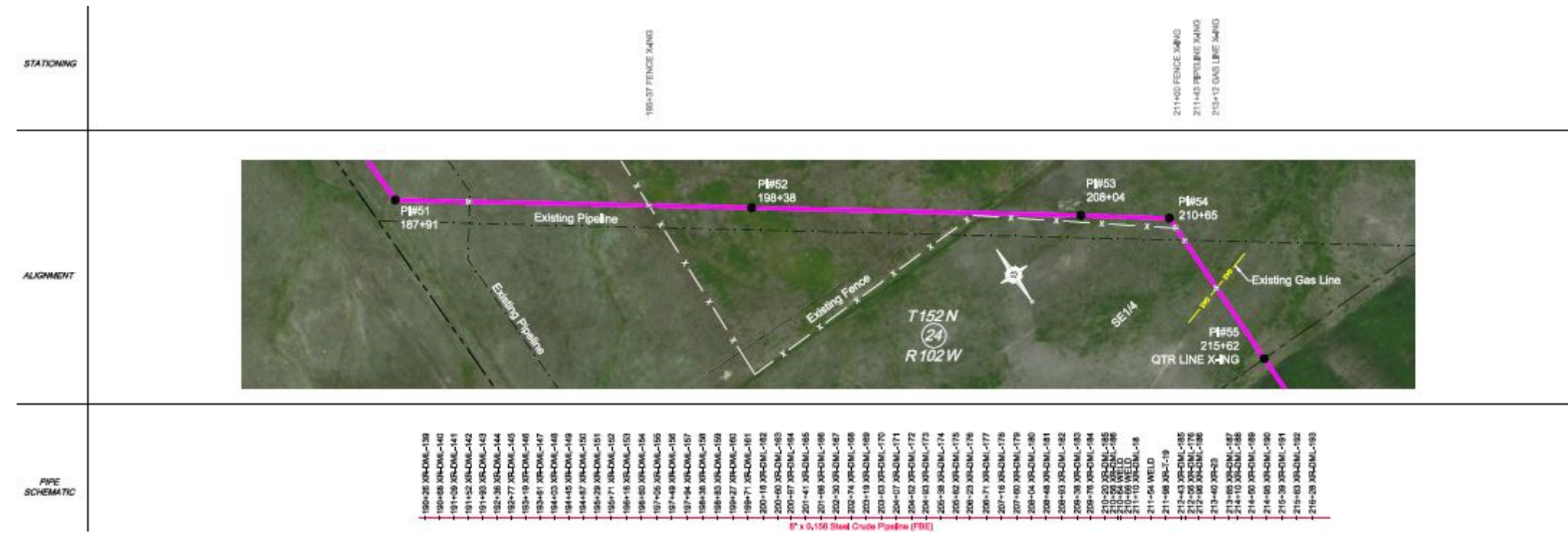
Station 143+18 thru 152+96 "PI#41 to south of PI#45
 The vegetation is weeds rather than crops.

Aerial View Station 153+44 thru Station 187+91 "PI#46 thru PI#51"



Station 179+95 "PI#49 barley crop
Reduced volumes and quality of crops."

Aerial View Station 187+91 thru Station 215+62 "PI#52 thru PI#55"



Station 187+91 thru 208+04 "PI#52 thru PI#53"
Poor crop conditions



Below is an example of the rehabilitation efforts south of station 204+38 through Mr. Larry Novak first section of property.

Aerial View Station 215+62 thru Station 236+68 “PI#55 thru PI#63 End of Project”



At the quarter section line of section (25) PI# 55 the separation area on Larry G. Novak property was not returned to the pre-construction grades. This subject area is .80 lower than the adjacent area. The recommendation is to regrade the easement to the adjacent elevations and reseeded.



Along this easement there thistle weeds.



Near station 204+38 pipeline connection and rehabilitation will need to follow



Near station 204+38 pipeline stub.



1000 feet south of McKenzie and some 300 feet west of 144th Ave. Near station 204+38 pipeline stub. This area appears to have been stripped of vegetation in Preparation of installing the pipeline.