

## Bauske, Shelly A.

---

**From:** Derek Gage <derek.gage@bratney.com>  
**Sent:** Wednesday, August 12, 2015 2:48 PM  
**To:** Gallion, Joshua C.  
**Cc:** Bauske, Shelly A.  
**Subject:** RE: Variance Request  
**Attachments:** bec@bratney.com\_20150811\_103228.pdf

Hi Josh,

I just wanted to keep you up to date that I am having the new access lids made and that we are working on getting these access holes cut in the truck scales in Grafton. Can you give me an idea on how long the variance process takes so I can try to schedule Capital Scale accordingly to come certify? We are trying to get these certified prior to harvest so I want to make sure I have them scheduled accordingly.

Thanks,

**Derek Gage**  
**Project Manager**

Bratney Companies | [www.bratney.com](http://www.bratney.com)  
3400 109th Street | Urbandale, IA 50322  
Tel: 515-974-6037 | Fax: 515-276-2067 | Cell: 515-883-0205



Disclaimer/Confidentiality Notice: The information contained within this transmission (including all attached files) is confidential and belongs to the sender, is subject to legal privilege, and shall be deemed to constitute "Confidential Information" under the terms of any agreement between the sender and the intended recipient. If you have reason to believe that you are not the intended recipient, you are hereby notified that any review, dissemination, distribution or copying of this email is prohibited. Please notify the sender immediately by email if you have received this e-mail by mistake, and delete this e-mail from your system. Bratney Companies does not enter into contracts through e-mail, unless subsequently confirmed in a signed writing. Although the sender has taken reasonable precautions to ensure no viruses are present in this e-mail, the company accepts no liability for any damage caused by viruses transmitted by this e-mail or attachment(s).

---

**From:** Gallion, Joshua C. [<mailto:jcgallion@nd.gov>]  
**Sent:** Monday, June 29, 2015 2:50 PM  
**To:** Derek Gage  
**Cc:** Bauske, Shelly A.  
**Subject:** Variance Request

Derek,

Please email the variance request to Shelly Bauske.

Thanks,  
Josh

Joshua C. Gallion  
**N.D. Public Service Commission**  
600 E. Boulevard Ave  
Bismarck, ND 58504

8 **WM-15-562** Filed: 8/12/2015 Pages: 4  
**Updated project information**

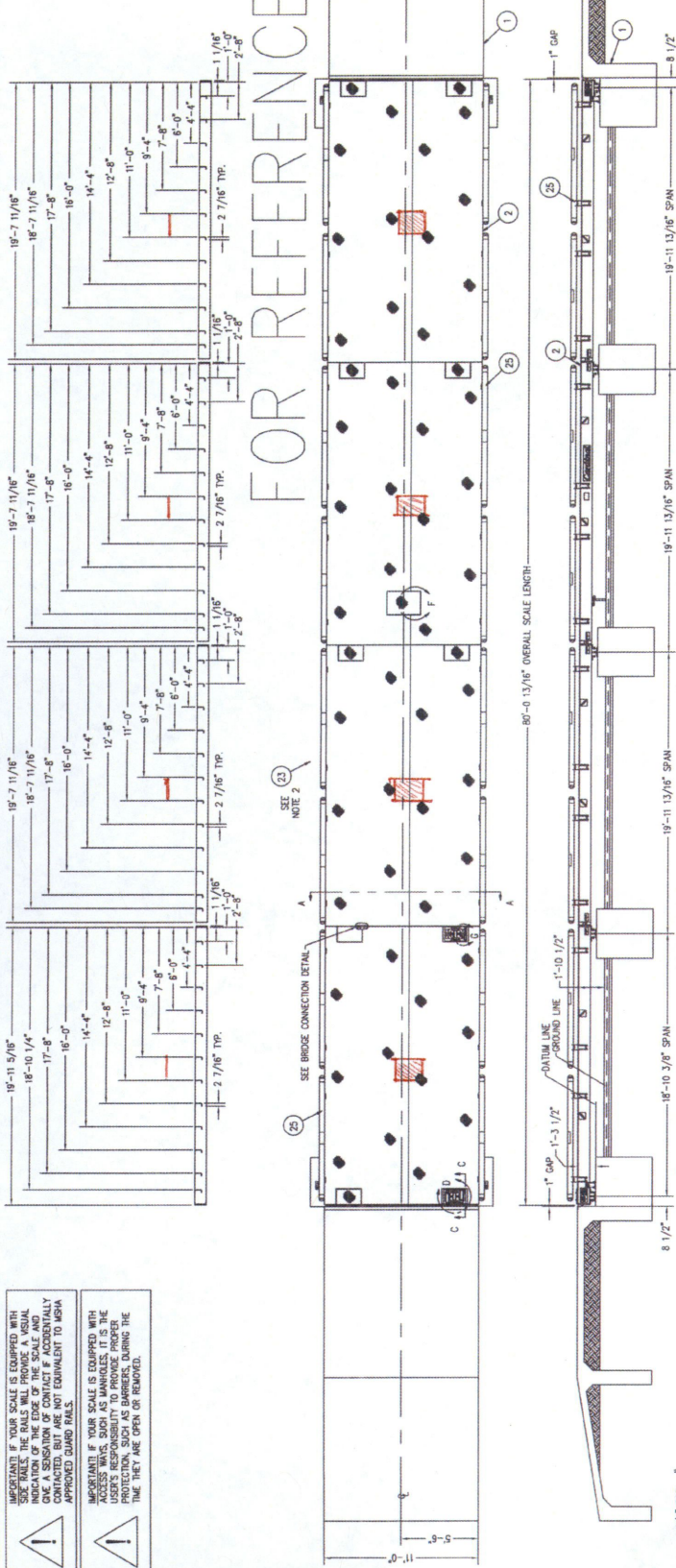
Bratney Companies  
Derek Gage, Project Manager

**IMPORTANT!** IF YOUR SCALE IS EQUIPPED WITH SIDE RAILS, THE RAILS WILL PROVIDE A VISUAL INDICATION OF THE SCALE AND WILL BE IDENTICALLY CONTACTED, BUT ARE NOT EQUIVALENT TO USBA APPROVED GUARD RAILS.

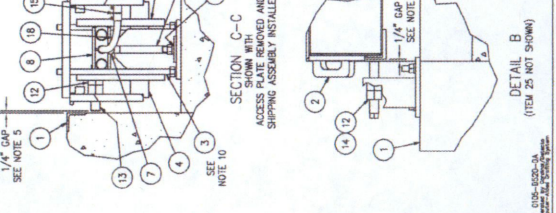
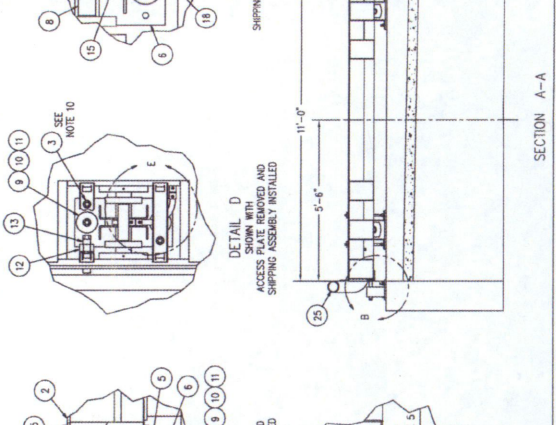
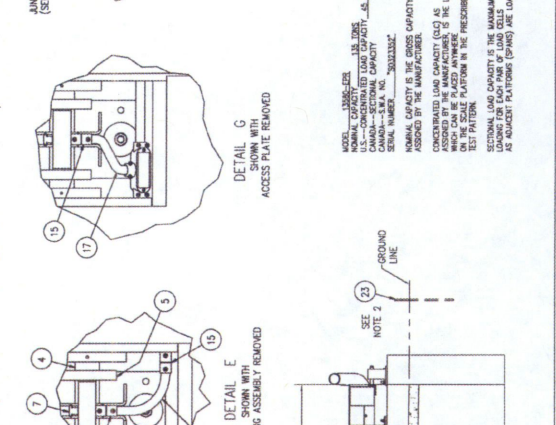
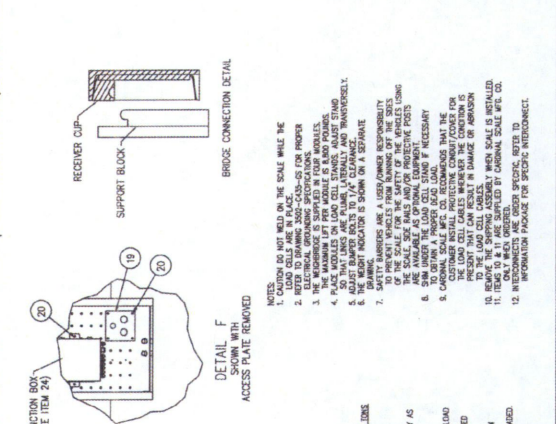
**IMPORTANT!** IF YOUR SCALE IS EQUIPPED WITH ACCESS WAYS, SUCH AS MANHOLES, IT IS THE USER'S RESPONSIBILITY TO PROVIDE PROPER PROTECTION, SUCH AS BARBERS, DURING THE TIME THEY ARE OPEN OR REMOVED.

REVISION RECORD		DATE BY
LTR	RELEASED	N/A/NH
A	MADE ITEM 23	7/9/14 NH

# FOR REFERENCE ONLY



QTY.	QTY. ITEM	PART #/VNS	DESCRIPTION	MATERIAL OR SOURCE	REVISION
1	25	1002-8021-24	FRONT-TO-ASSEMBLY	(SEE NOTE 13)	1.002
1	26	1002-8021-14	FRONT-TO-ASSEMBLY	(SEE NOTE 13)	1.002
1	27	1002-8021-08	FRONT-TO-ASSEMBLY	(SEE NOTE 13)	1.002
1	28	1002-8021-08	FRONT-TO-ASSEMBLY	(SEE NOTE 13)	1.002
1	29	1002-8021-08	FRONT-TO-ASSEMBLY	(SEE NOTE 13)	1.002
1	30	1002-8021-08	FRONT-TO-ASSEMBLY	(SEE NOTE 13)	1.002
1	31	1002-8021-08	FRONT-TO-ASSEMBLY	(SEE NOTE 13)	1.002
1	32	1002-8021-08	FRONT-TO-ASSEMBLY	(SEE NOTE 13)	1.002
1	33	1002-8021-08	FRONT-TO-ASSEMBLY	(SEE NOTE 13)	1.002
1	34	1002-8021-08	FRONT-TO-ASSEMBLY	(SEE NOTE 13)	1.002
1	35	1002-8021-08	FRONT-TO-ASSEMBLY	(SEE NOTE 13)	1.002
1	36	1002-8021-08	FRONT-TO-ASSEMBLY	(SEE NOTE 13)	1.002
1	37	1002-8021-08	FRONT-TO-ASSEMBLY	(SEE NOTE 13)	1.002
1	38	1002-8021-08	FRONT-TO-ASSEMBLY	(SEE NOTE 13)	1.002
1	39	1002-8021-08	FRONT-TO-ASSEMBLY	(SEE NOTE 13)	1.002
1	40	1002-8021-08	FRONT-TO-ASSEMBLY	(SEE NOTE 13)	1.002
1	41	1002-8021-08	FRONT-TO-ASSEMBLY	(SEE NOTE 13)	1.002
1	42	1002-8021-08	FRONT-TO-ASSEMBLY	(SEE NOTE 13)	1.002
1	43	1002-8021-08	FRONT-TO-ASSEMBLY	(SEE NOTE 13)	1.002
1	44	1002-8021-08	FRONT-TO-ASSEMBLY	(SEE NOTE 13)	1.002
1	45	1002-8021-08	FRONT-TO-ASSEMBLY	(SEE NOTE 13)	1.002
1	46	1002-8021-08	FRONT-TO-ASSEMBLY	(SEE NOTE 13)	1.002
1	47	1002-8021-08	FRONT-TO-ASSEMBLY	(SEE NOTE 13)	1.002
1	48	1002-8021-08	FRONT-TO-ASSEMBLY	(SEE NOTE 13)	1.002
1	49	1002-8021-08	FRONT-TO-ASSEMBLY	(SEE NOTE 13)	1.002
1	50	1002-8021-08	FRONT-TO-ASSEMBLY	(SEE NOTE 13)	1.002
1	51	1002-8021-08	FRONT-TO-ASSEMBLY	(SEE NOTE 13)	1.002
1	52	1002-8021-08	FRONT-TO-ASSEMBLY	(SEE NOTE 13)	1.002
1	53	1002-8021-08	FRONT-TO-ASSEMBLY	(SEE NOTE 13)	1.002
1	54	1002-8021-08	FRONT-TO-ASSEMBLY	(SEE NOTE 13)	1.002
1	55	1002-8021-08	FRONT-TO-ASSEMBLY	(SEE NOTE 13)	1.002
1	56	1002-8021-08	FRONT-TO-ASSEMBLY	(SEE NOTE 13)	1.002
1	57	1002-8021-08	FRONT-TO-ASSEMBLY	(SEE NOTE 13)	1.002
1	58	1002-8021-08	FRONT-TO-ASSEMBLY	(SEE NOTE 13)	1.002
1	59	1002-8021-08	FRONT-TO-ASSEMBLY	(SEE NOTE 13)	1.002
1	60	1002-8021-08	FRONT-TO-ASSEMBLY	(SEE NOTE 13)	1.002
1	61	1002-8021-08	FRONT-TO-ASSEMBLY	(SEE NOTE 13)	1.002
1	62	1002-8021-08	FRONT-TO-ASSEMBLY	(SEE NOTE 13)	1.002
1	63	1002-8021-08	FRONT-TO-ASSEMBLY	(SEE NOTE 13)	1.002
1	64	1002-8021-08	FRONT-TO-ASSEMBLY	(SEE NOTE 13)	1.002
1	65	1002-8021-08	FRONT-TO-ASSEMBLY	(SEE NOTE 13)	1.002
1	66	1002-8021-08	FRONT-TO-ASSEMBLY	(SEE NOTE 13)	1.002
1	67	1002-8021-08	FRONT-TO-ASSEMBLY	(SEE NOTE 13)	1.002
1	68	1002-8021-08	FRONT-TO-ASSEMBLY	(SEE NOTE 13)	1.002
1	69	1002-8021-08	FRONT-TO-ASSEMBLY	(SEE NOTE 13)	1.002
1	70	1002-8021-08	FRONT-TO-ASSEMBLY	(SEE NOTE 13)	1.002
1	71	1002-8021-08	FRONT-TO-ASSEMBLY	(SEE NOTE 13)	1.002
1	72	1002-8021-08	FRONT-TO-ASSEMBLY	(SEE NOTE 13)	1.002
1	73	1002-8021-08	FRONT-TO-ASSEMBLY	(SEE NOTE 13)	1.002
1	74	1002-8021-08	FRONT-TO-ASSEMBLY	(SEE NOTE 13)	1.002
1	75	1002-8021-08	FRONT-TO-ASSEMBLY	(SEE NOTE 13)	1.002
1	76	1002-8021-08	FRONT-TO-ASSEMBLY	(SEE NOTE 13)	1.002
1	77	1002-8021-08	FRONT-TO-ASSEMBLY	(SEE NOTE 13)	1.002
1	78	1002-8021-08	FRONT-TO-ASSEMBLY	(SEE NOTE 13)	1.002
1	79	1002-8021-08	FRONT-TO-ASSEMBLY	(SEE NOTE 13)	1.002
1	80	1002-8021-08	FRONT-TO-ASSEMBLY	(SEE NOTE 13)	1.002
1	81	1002-8021-08	FRONT-TO-ASSEMBLY	(SEE NOTE 13)	1.002
1	82	1002-8021-08	FRONT-TO-ASSEMBLY	(SEE NOTE 13)	1.002
1	83	1002-8021-08	FRONT-TO-ASSEMBLY	(SEE NOTE 13)	1.002
1	84	1002-8021-08	FRONT-TO-ASSEMBLY	(SEE NOTE 13)	1.002
1	85	1002-8021-08	FRONT-TO-ASSEMBLY	(SEE NOTE 13)	1.002
1	86	1002-8021-08	FRONT-TO-ASSEMBLY	(SEE NOTE 13)	1.002
1	87	1002-8021-08	FRONT-TO-ASSEMBLY	(SEE NOTE 13)	1.002
1	88	1002-8021-08	FRONT-TO-ASSEMBLY	(SEE NOTE 13)	1.002
1	89	1002-8021-08	FRONT-TO-ASSEMBLY	(SEE NOTE 13)	1.002
1	90	1002-8021-08	FRONT-TO-ASSEMBLY	(SEE NOTE 13)	1.002
1	91	1002-8021-08	FRONT-TO-ASSEMBLY	(SEE NOTE 13)	1.002
1	92	1002-8021-08	FRONT-TO-ASSEMBLY	(SEE NOTE 13)	1.002
1	93	1002-8021-08	FRONT-TO-ASSEMBLY	(SEE NOTE 13)	1.002
1	94	1002-8021-08	FRONT-TO-ASSEMBLY	(SEE NOTE 13)	1.002
1	95	1002-8021-08	FRONT-TO-ASSEMBLY	(SEE NOTE 13)	1.002
1	96	1002-8021-08	FRONT-TO-ASSEMBLY	(SEE NOTE 13)	1.002
1	97	1002-8021-08	FRONT-TO-ASSEMBLY	(SEE NOTE 13)	1.002
1	98	1002-8021-08	FRONT-TO-ASSEMBLY	(SEE NOTE 13)	1.002
1	99	1002-8021-08	FRONT-TO-ASSEMBLY	(SEE NOTE 13)	1.002
1	100	1002-8021-08	FRONT-TO-ASSEMBLY	(SEE NOTE 13)	1.002



**NOTES:**

- CAUTION DO NOT WELD ON THE SCALE WHILE THE 2. REFER TO DRAWING 1002-8021-08 FOR PROPER 3. THE MANUFACTURER IS SUPPLIED IN LOAD MODELS. 4. THE MANUFACTURER IS SUPPLIED IN LOAD MODELS. 5. DO NOT LOAD THE SCALE WITH ANYTHING OTHER THAN THE LOAD CELL CALIBRATED TO THE MANUFACTURER'S TEST PATTERN. 6. THE LOAD CELL CALIBRATION IS SHOWN ON A SEPARATE SHEET. 7. SAFETY BARBERS ARE A USER/OWNER RESPONSIBILITY. 8. THE SCALE IS NOT TO BE USED FOR ANYTHING OTHER THAN THE LOAD CELL CALIBRATED TO THE MANUFACTURER'S TEST PATTERN. 9. THE SCALE IS NOT TO BE USED FOR ANYTHING OTHER THAN THE LOAD CELL CALIBRATED TO THE MANUFACTURER'S TEST PATTERN. 10. REMOVE THE SHIPPING ASSEMBLY WHEN SCALE IS INSTALLED. 11. ONLY MEN OPERATED BY CARDINAL SCALE WEL. CO. 12. INFORMATION AVAILABLE FOR SPECIFIC AUTOMATION.

**NOTE:** MANUFACTURER'S U.S. USE ONLY. U.S.-CONCENTRATED LOAD CAPACITY AS DETERMINED BY THE MANUFACTURER. SERIAL NUMBER. NOMINAL CAPACITY IS THE GROSS CAPACITY AS ASSIGNED BY THE MANUFACTURER. WHICH CAN BE PLACED ANYWHERE IN THE FREIGHT PATTERN. SECTIONAL LOAD CAPACITY IS THE MAXIMUM LOAD CAPACITY AS ASSIGNED BY THE MANUFACTURER.

**Cardinal**  
SCALE & WEIGHING SYSTEMS  
1002-8021-08  
FRONT-TO-ASSEMBLY  
(SEE NOTE 13)

**FINAL ASSEMBLY**  
DATE: 7/9/14  
BY: NH

SCALE: 1002-8021-08  
MODEL: 1002-8021-08  
SHEET: 1 OF 1  
DRAWING: MD-32-3352

QTY.	QTY. ITEM	PART #/VNS	DESCRIPTION	MATERIAL OR SOURCE	REVISION
1	1	1002-8021-08	FRONT-TO-ASSEMBLY	(SEE NOTE 13)	1.002





**BRATNEY COMPANIES**

DATE: \_\_\_\_\_ PROJECT: \_\_\_\_\_

CUSTOMER: \_\_\_\_\_

